

**Title: A Radiosensitizing Inhibitor of HIF-1 alters the Optical Redox State of Human Lung  
Cancer Cells *In Vitro***

**Short Title:** Optical Redox Imaging during Radiosensitization

**Authors:** David E. Lee,<sup>ac\*</sup> Kinan Alhallak,<sup>a\*</sup> Samir V. Jenkins,<sup>b</sup> Isaac Vargas,<sup>a</sup> Nicholas P. Greene,<sup>c</sup> Kyle P. Quinn,<sup>a</sup> Robert J. Griffin,<sup>b</sup> Ruud P. M. Dings,<sup>b</sup> and Narasimhan Rajaram<sup>a</sup>

<sup>a</sup>Department of Biomedical Engineering, University of Arkansas, Fayetteville, AR, 72701

<sup>b</sup>Department of Radiation Oncology, University of Arkansas for Medical Sciences, Little Rock, AR, 72205

<sup>c</sup>Department of Health, Human Performance, and Recreation, University of Arkansas, Fayetteville, AR, 72701

\* - Authors contributed equally to the work

**Keywords:** Redox ratio, YC-1, radiation therapy, Two photon excitation fluorescence, Optical metabolic imaging

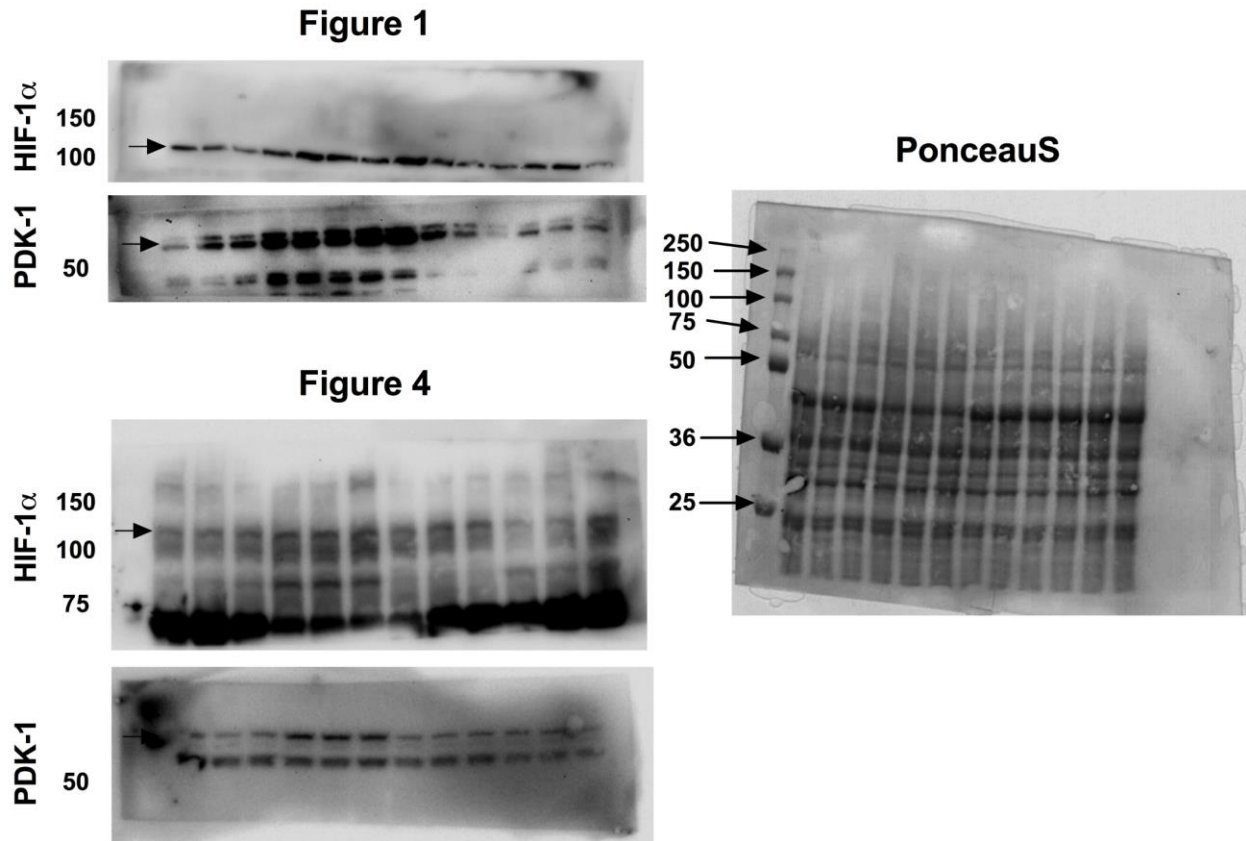
**Corresponding Authors:** Narasimhan Rajaram (nrajaram@uark.edu) and Ruud P. M. Dings (rpdings@uams.edu)

Department of Biomedical Engineering

700 W. Research Center Blvd.

Fayetteville, AR 72701

Phone: (479)575-7696



**Supplemental Figure 1. Sample Immunoblot exposures.** Samples immunoblot images seen in the primary figures have been horizontally cropped from original image exposures. Original HIF-1 $\alpha$  and PDK-1 immunoblot chemiluminescent exposures are shown as represented by cropped images in Figures 1 and 4. Example white light image (converted to grayscale) of Ponceau S stain of transferred protein alongside molecular weight ladder. Membranes were physically cut horizontally at or near the 75kDa marker following Ponceau S staining to allow multiple antigen targets on a single membrane. For chemiluminescent images, molecular weight ladders were visualized under white light and superimposed to verify the correct band was analyzed. On the left images, arrows indicate band that was analyzed for final analysis. For the Ponceau S image, arrows indicate molecular weight ladder size.