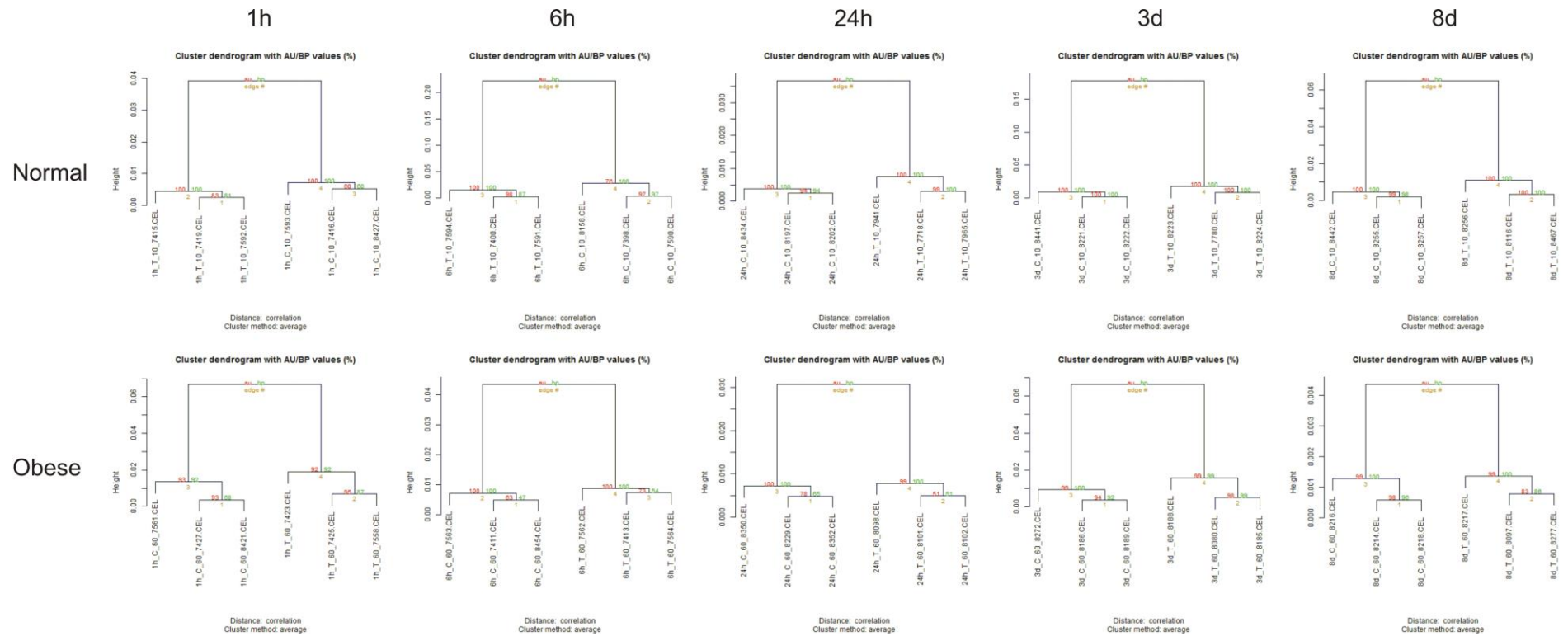


Diet-induced obesity affects muscle regeneration after murine blunt muscle trauma – a broad spectrum analysis

Pengfei Xu^{1†}, Jens-Uwe Werner^{1†}, Sebastian Milerski¹, Carmen Hamp¹, Tatjana Kuzenko¹, Markus Jähnert², Pascal Gottmann², Luisa de Roy³, Daniela Warnecke³, Alireza Abaei⁴, Annette Palmer⁵, Markus Huber-Lang⁵, Lutz Dürselen³, Volker Rasche⁴, Annette Schürmann², Martin Wabitsch^{6*}, Uwe Knippschild^{1*}

* Correspondence: Prof. Dr. Uwe Knippschild, uwe.knippschild@uniklinik-ulm.de and Prof. Dr. Martin Wabitsch, martin.wabitsch@uniklinik-ulm.de



Sup. Fig. 2: Hierarchical cluster analysis (HCA) of muscle tissue from female control and trauma, lean and obese C57BL/6J mice between 1h to 8d post-injury. Red: AU = Approximately Unbiased; Green: BP = Bootstrap Probability, both in percent.