

## **Supplementary Material**

**For**

### **Lysophosphatidic acid analogues rather than lysophosphatidic acid promoted the bone formation in vivo**

Zi-Li Yu<sup>1,2</sup>, DDS, MD, PhD, zili09@whu.edu.cn

Bin-Fang Jiao<sup>3</sup>, Bachelor, 2012203040032@whu.edu.cn

Zu-Bing Li<sup>1,2,\*</sup> DDS, MD, PhD, [lizubing@ whu.edu.cn](mailto:lizubing@whu.edu.cn) .

<sup>1</sup> The State Key Laboratory Breeding Base of Basic Science of Stomatology (Hubei-MOST) and Key Laboratory of Oral Biomedicine Ministry of Education, School and Hospital of Stomatology, Wuhan University. 237, Luoyu Road, Wuhan, PR China.

<sup>2</sup> Department of Oral and Maxillofacial Surgery, School and Hospital of Stomatology, Wuhan University. 237, Luoyu Road, Wuhan, RP China.

<sup>3</sup> Wuhan NO.1 Stomatological Hospital. 675, Jianshe Avenue, Wuhan, PR China.

**\*Corresponding author:** Zu-bing Li, Department of Oral and Maxillofacial Surgery, School and Hospital of Stomatology, Wuhan University, 237 Luoyu Road, Wuhan 430079, PR China. E-mail address: [lizubing@ whu.edu.cn](mailto:lizubing@whu.edu.cn) (Zu-Bing Li).

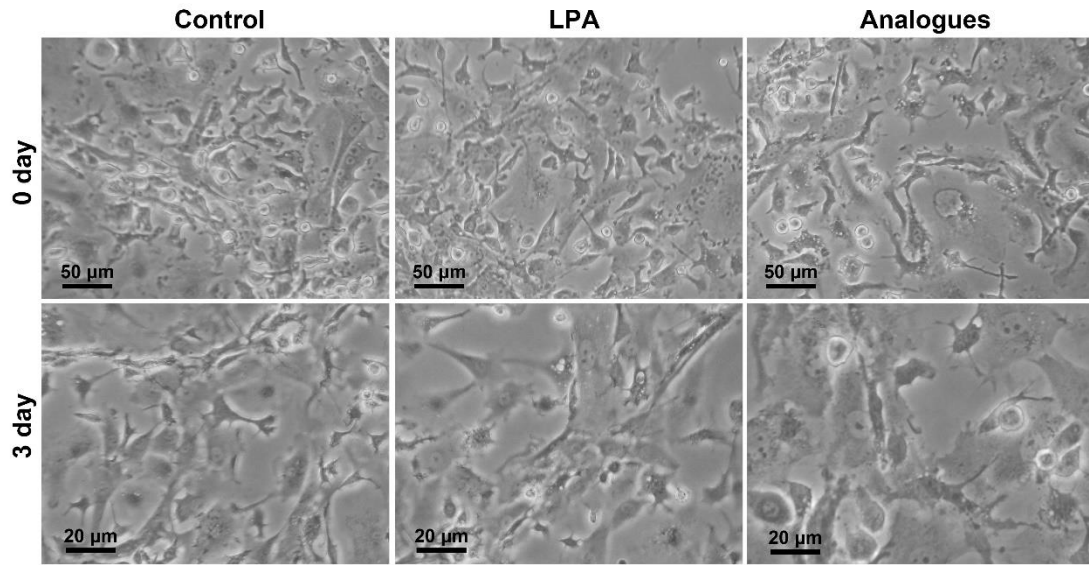


Figure S1 Morphological observation of osteoblasts after incubated with LPA and LPA analogues for 3 days.