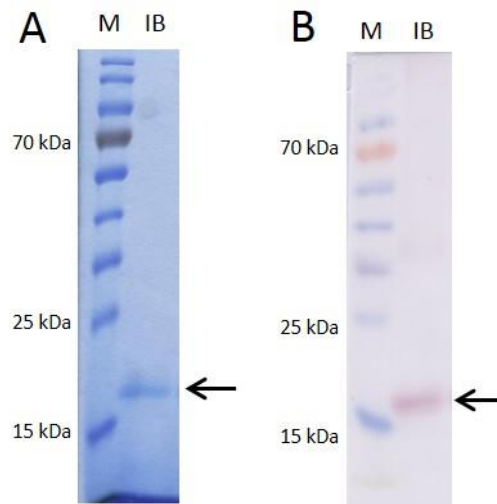


## Supporting information



**S1 Fig. Recombinant Sola 1 4.02 protein purified from inclusion body fraction.** (A) SDS-PAGE and (B) Western-Blot analysis of pooled elution fractions of the recombinant Sola 1 4.02 protein purified from insoluble fraction (IB). SDS-PAGE was performed under reducing conditions. Coomassie Brilliant Blue G250 was used for protein staining. For Western blot analysis specific polyclonal Sola 1 4-antibody was used. M: PageRuler Prestained Protein Ladder.