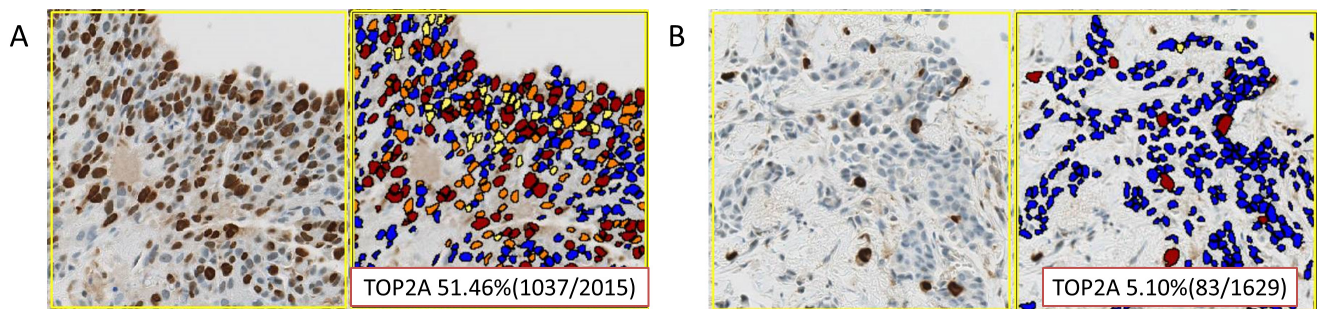
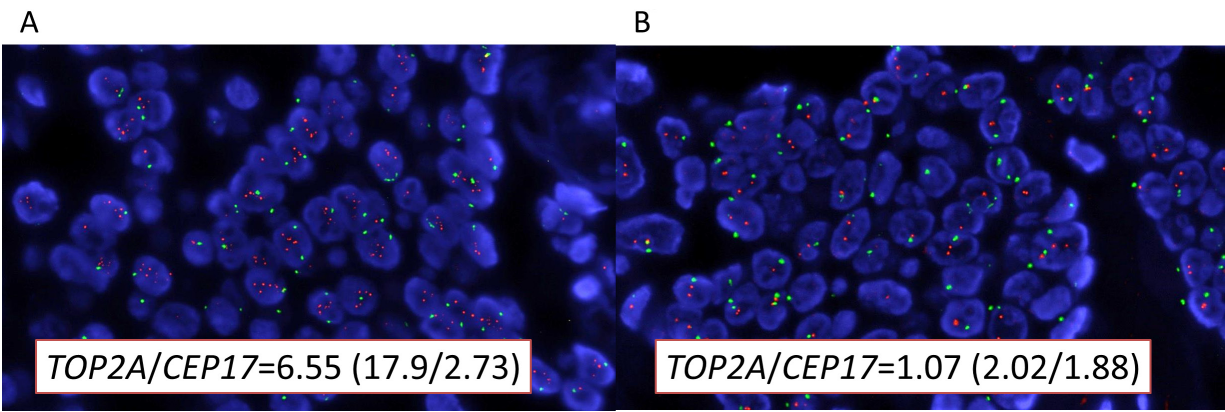


# Overexpression of topoisomerase II alpha protein is a factor for poor prognosis in patients with luminal B breast cancer

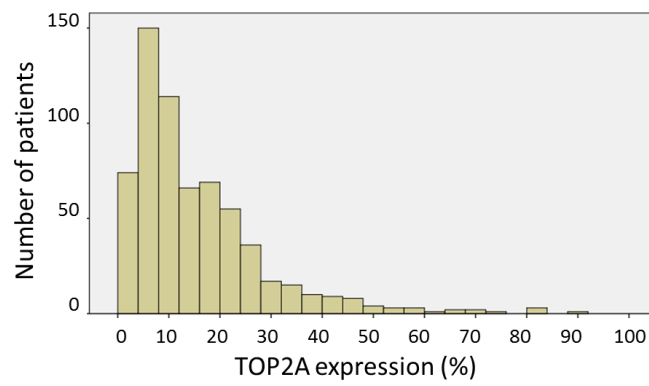
## SUPPLEMENTARY MATERIALS



**Supplementary Figure 1:** Representative microscopic findings of nuclear staining for (A) TOP2A overexpression and (B) normal breast cancer and auto-analysis of frequency of TOP2A positive cells ( $\times 40$ ).



**Supplementary Figure 2:** Representative microscopic findings of *TOP2A/CEP17* for (A) *TOP2A* amplified and (B) normal breast cancer ( $\times 40$ ).



**Supplementary Figure 3:** Histogram of immunostaining frequency of *TOP2A* protein in whole population.