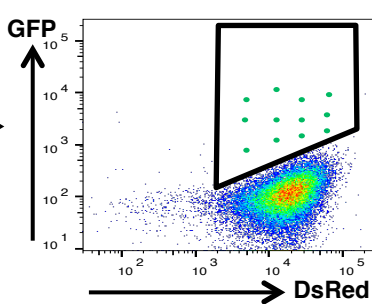


**A**

GFP-peptide CRL  
substrates  
(MLN4924  
positive cells)



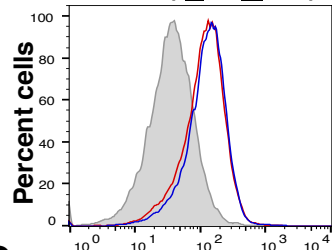
Knockout APPBP2 with  
2 independent sgRNAs;  
sgRNA targeting AAVS1  
as control



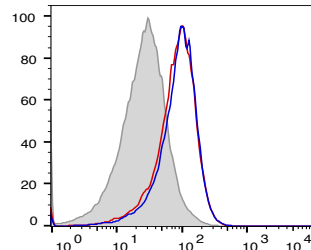
Sort top 5%  
GFP positive  
cells 9 days  
post infection

**B**

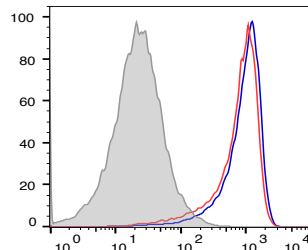
PXN (-RHCGRT\*)



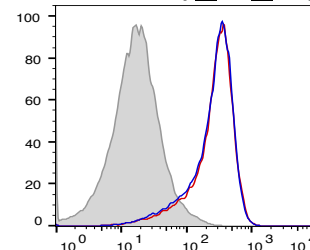
PIK3C2B (-RSHGTL\*)



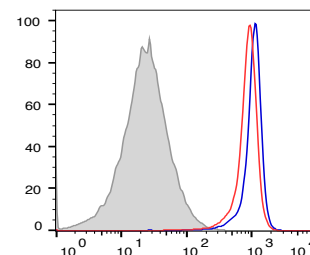
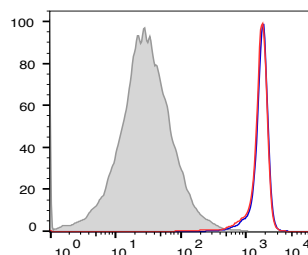
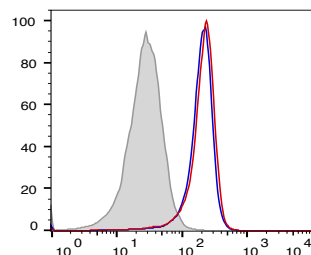
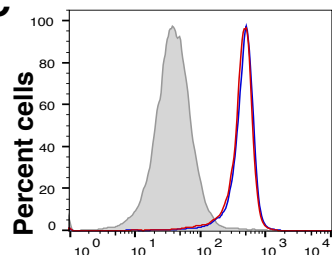
ASCC3 (-RFRGLR\*)



Clone 1 (-RNLGIR\*)



■ + sgAAVS1  
■ + sg1-APPBP2  
■ + sg2-APPBP2

**C**

■ Wild-type  
■ Mutant (RxxG/DxxD)  
■ C-terminal extension

Stability

**D**