

Supplemental Materials

Molecular Biology of the Cell

Li et al.

Figure S1

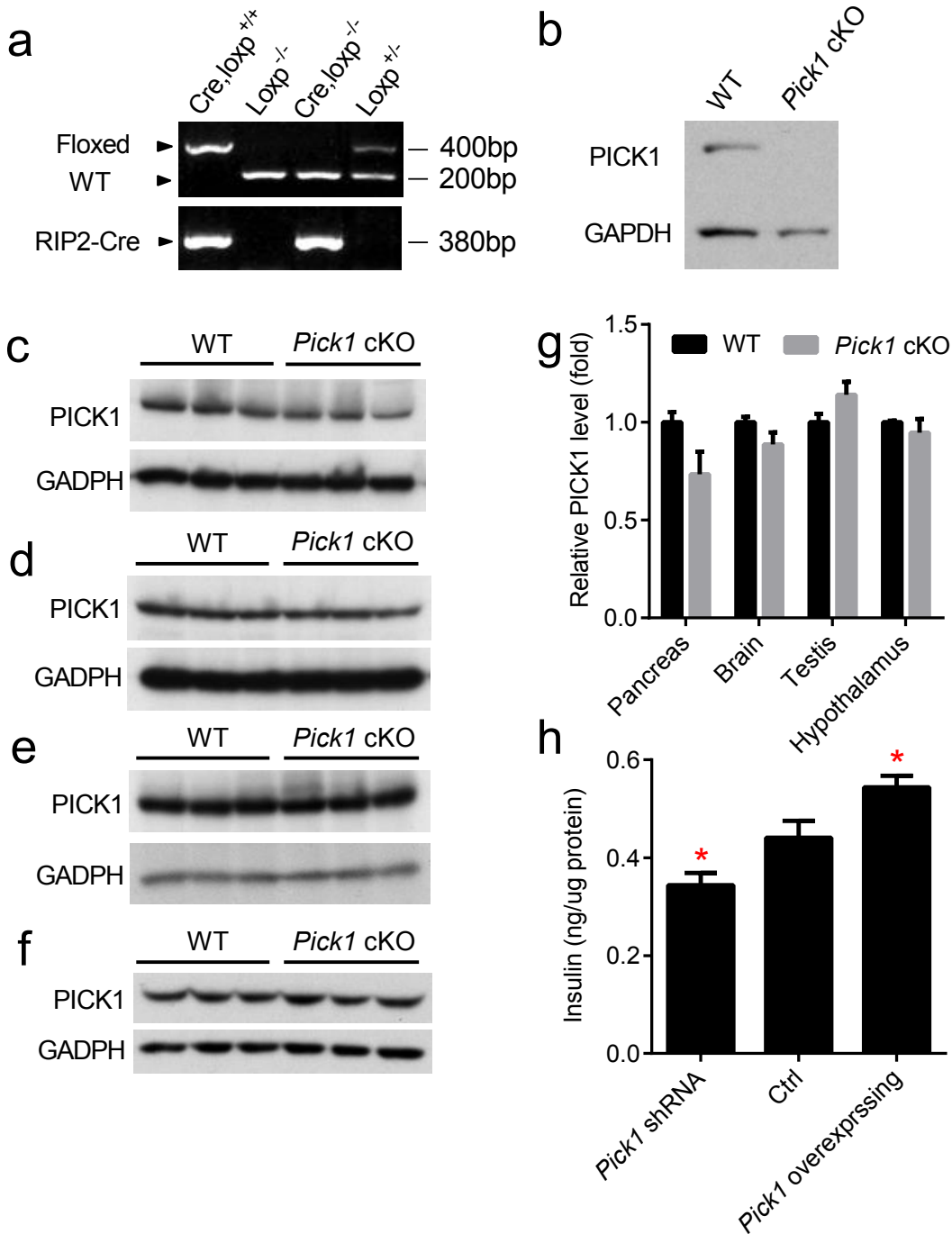


Fig. S1.(a) Representative PCR genotyping results of the indicated genotypes. (b) Western blot analysis of isolated islets from WT and cKO mice aged 4 months old. (c-f) Western blot analysis of PICK1 in the pancreas, brain, testis and hypothalamus from 5-month-old control and PICK1 cKO animals. (g) Relative PICK1 protein level was measured and normalized to that of GAPDH, n=3 per group. (h) Evaluation of insulin in INS1E cells with reduced or overexpressed PICK1. Data are represented as the mean \pm SEM. *P<0.05; two sided student's t-test.

Figure S2

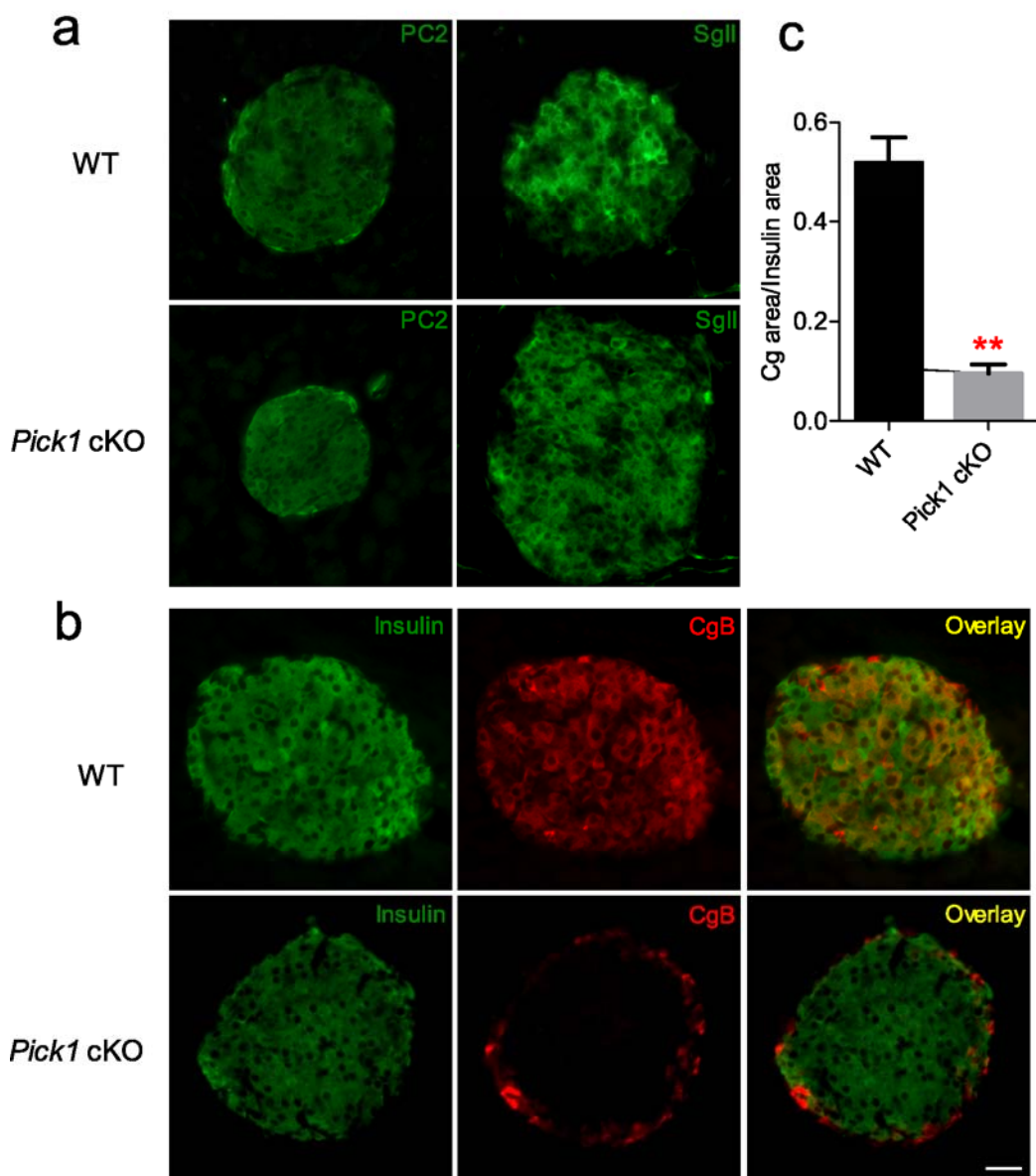


Fig. S2.(a-b) Pancreatic sections from 5-month-old mice of the indicated genotypes were stained with antibodies against PC2 (a, left) or SgII(a, right), insulin (b, green) and CgB (b, red). Scale bar represents 50 μ m. SgII, secretogranin II. (c) Quantification analysis of the CgB/insulin area. 20 islets were calculated per group. Data are represented as the mean \pm SEM. ** $P < 0.01$; two sided student's t-test.

Table S1. Q-PCR Primer Sequence

Gene	Forward	Reverse
<i>Pdx1</i>	TTTGAAGTCAGTCAGTTGCTCCTT	CCTTCAACCCCTCTCTTGCTATT
<i>Mafa</i>	AGGAGGTCATCCGACTGAAACAGA	ATTTCCTTGTACAGGTCCCCT
<i>Ins1</i>	TGGCTTCTTCTACACACCCAAGTC	ACTGATCCACAATGCCACGCTTCT
<i>Ins2</i>	GTGGCTTCTTCTACACACCCATGT	GCACTGATCTACAATGCCACGCTT
<i>Pax6</i>	ACAACGACGAAAGAGAGG	ACAAAGACACCACCAAGC
<i>NeuroD1</i>	TCAGCATCAATGGCAACTTC	AAGATTGATCCGTGGCTTTG
<i>CHOP</i>	CCACCACACCTGAAAGCAGAA	AGGTGAAAGGCAGGGACTCA
<i>sXbp1</i>	CTGAGTCCGAATCAGGTGCAG	GTCCATGGGAAGATGTTCTGG
<i>Xbp1</i>	TGGCCGGGTCTGCTGAGTCCG	GTCCATGGGAAGATGTTCTGG
<i>ATF4</i>	GGGTTCTGTCTTCCACTCCA	AAGCAGCAGAGTCAGGCTTTC
<i>Pc1/3</i>	AATGGGCGGGCGGAGAT	CCAAAAGGTCATACCCAGTTC
<i>Pc2</i>	GCTGGACCAGCCCTTTATGA	ATGTCGATCAGTTGAGGCATGT
<i>Cpe</i>	CTGATCCACAGCACCCGAAT	GCGATGCGGCTTTCTCA
<i>Actin</i>	CTGAATGGCCAGGTCTGA	CCCTGGCTGCCTCAACAC
<i>Gapdh</i>	GGTGAAGGTCGGTGTGAACG	CTCGCTCCTGGAAGATGGTG