

Supplement figures 1 -4:

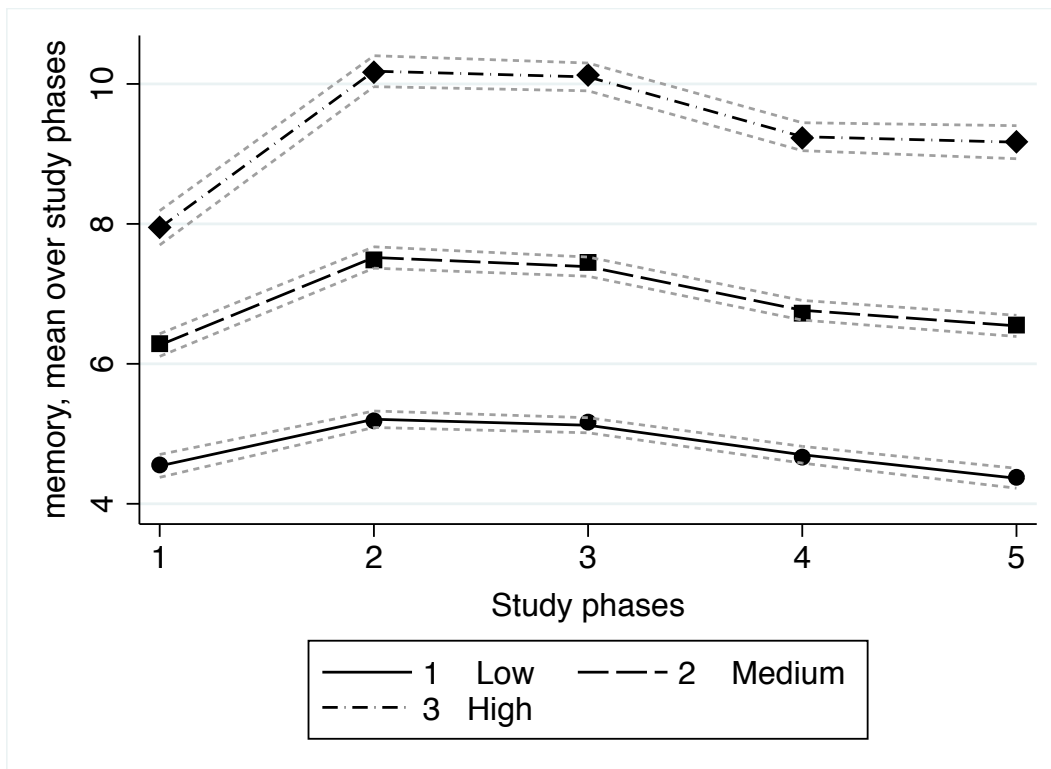


Figure 1S: Trajectories of memory test performance score over five study phases (from 1991/1994 to 2012/2013 (n=6072), BIC= 49289,76, AIC=49229.47).

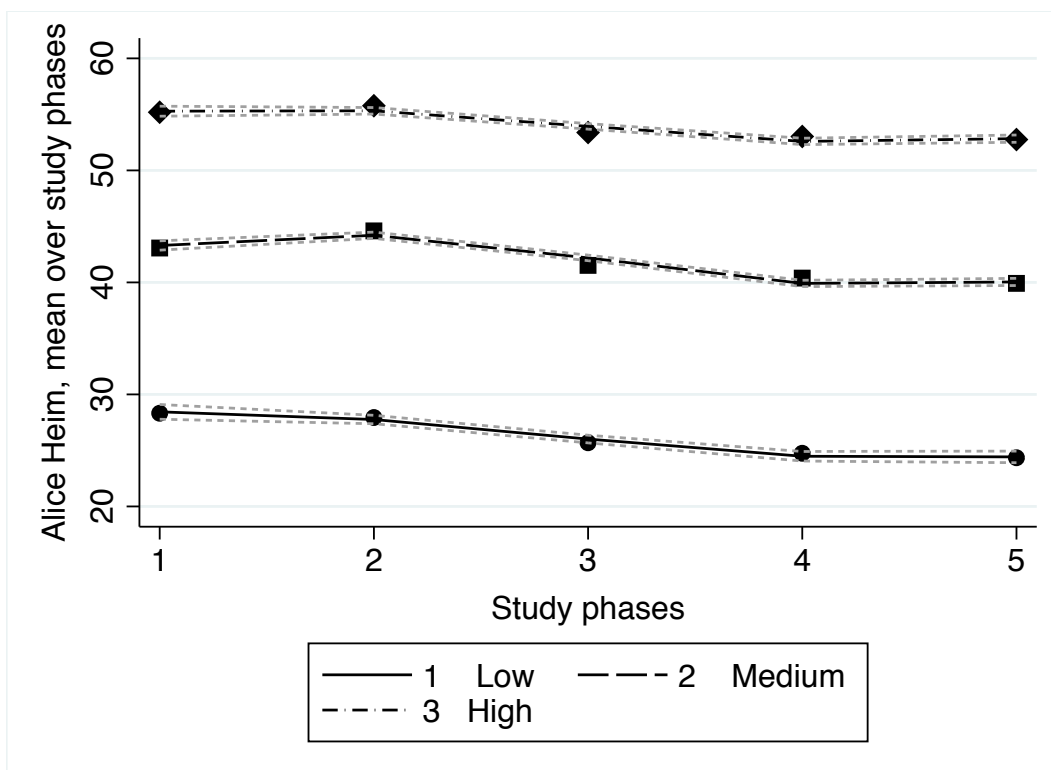


Figure 2S: Trajectories of inductive reasoning test performance score over five study phases (from 1991/1994 to 2012/2013 (n=6072) BIC= 78211.10, AIC=78150.75).

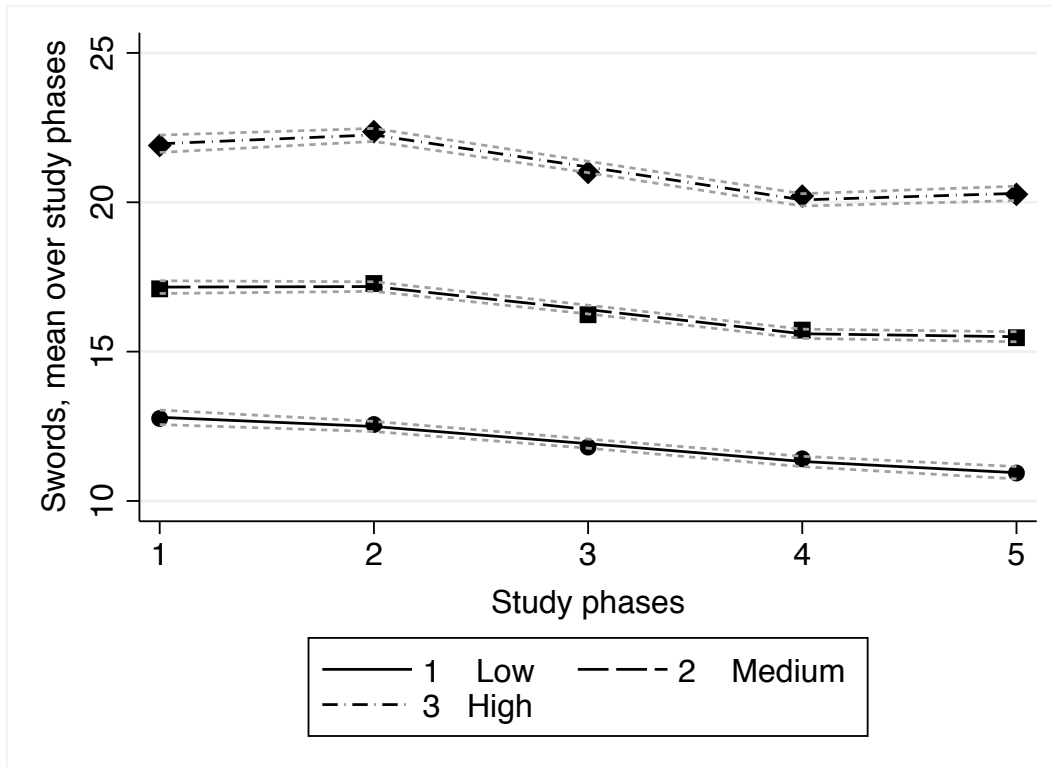


Figure 3S: Trajectories of phonemic fluency test performance score over five study phases (from 1991/1994 to 2012/2013 (n=6072) BIC=60709.70, AIC=6649.40).

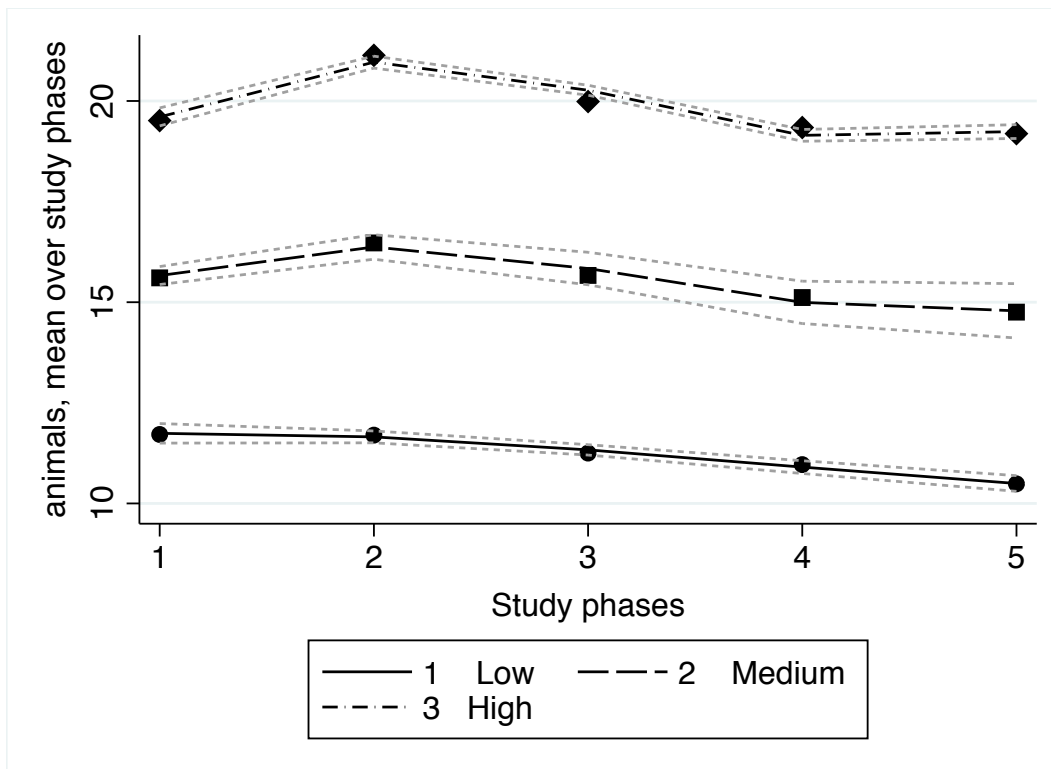


Figure 4S: Trajectories of semantic fluency test performance score over five study phases (from 1991/1994 to 2012/2013 (n=6072) BIC=59154.99, AIC=59094.67).