

1 **SUPPLEMENTARY INFORMATION**

2

3 **Boat noise prevents soundscape-based habitat selection by coral planulae**

4

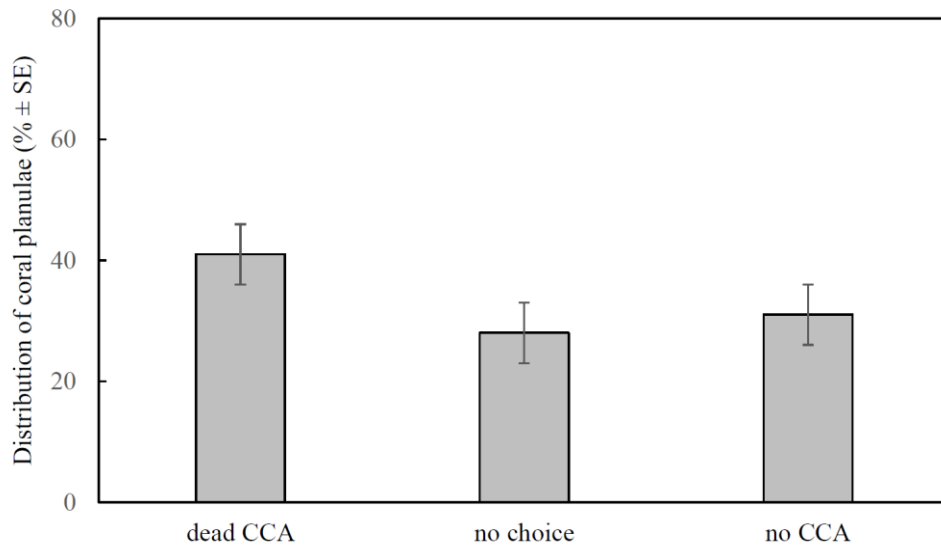
5 David Lecchini, Frédéric Bertucci, Camille Gache, Adam Khalife, Marc Besson, Natacha Roux, Cecile

6 Berthe, Shubha Singh, Eric Parmentier, Maggy M. Nugues, Rohan M. Brooker, Danielle L. Dixson and

7 Laetitia Hédouin

8 **Supplementary Figure S1.** Distribution of coral planulae ($\% \pm \text{SE}$) in the choice chambers for the
9 preliminary trials with bleached dead CCA vs no CCA (results at $t = 4\text{h}$; 12 replicates). The data
10 showed no significant repulsion of coral planulae by dead.

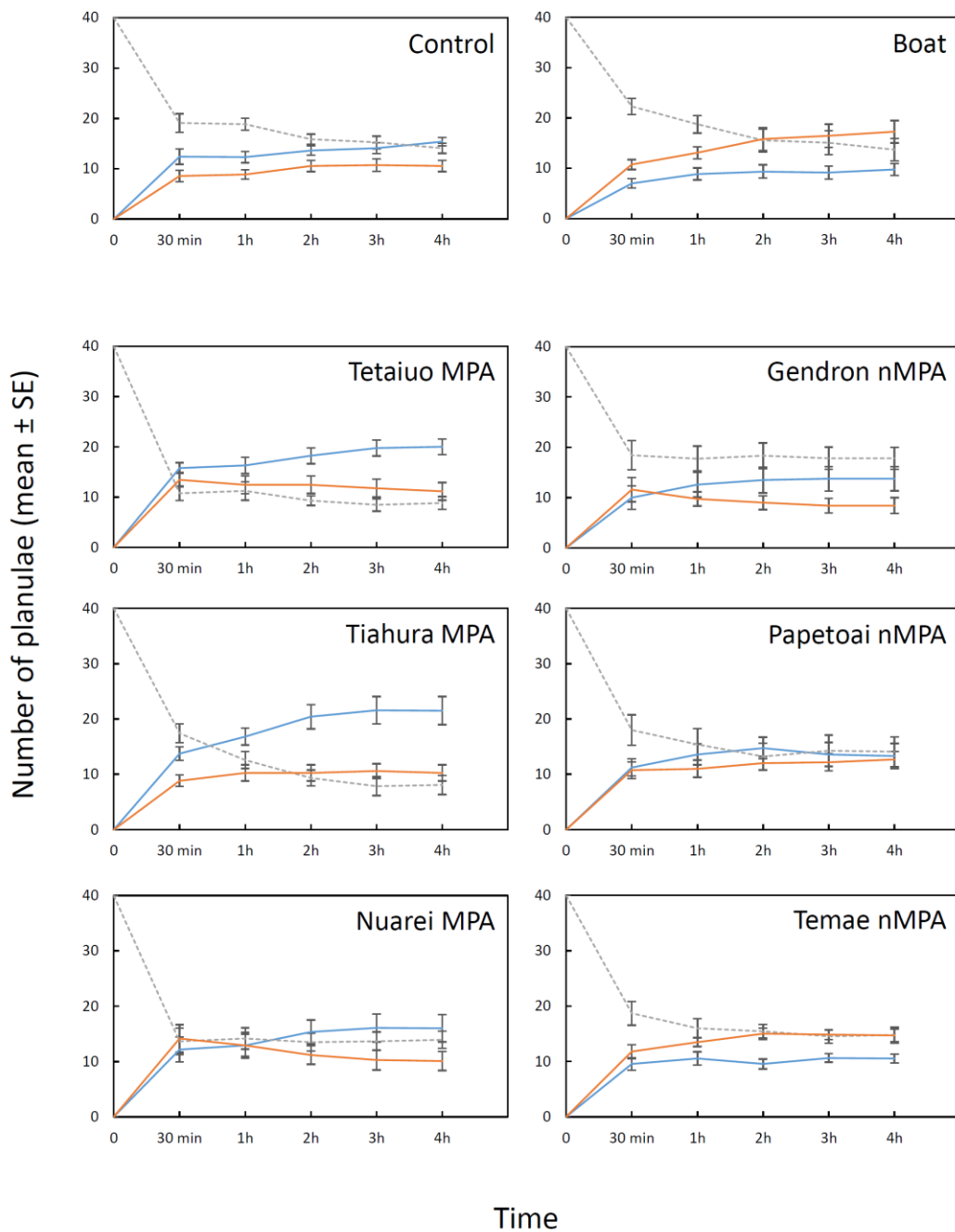
11



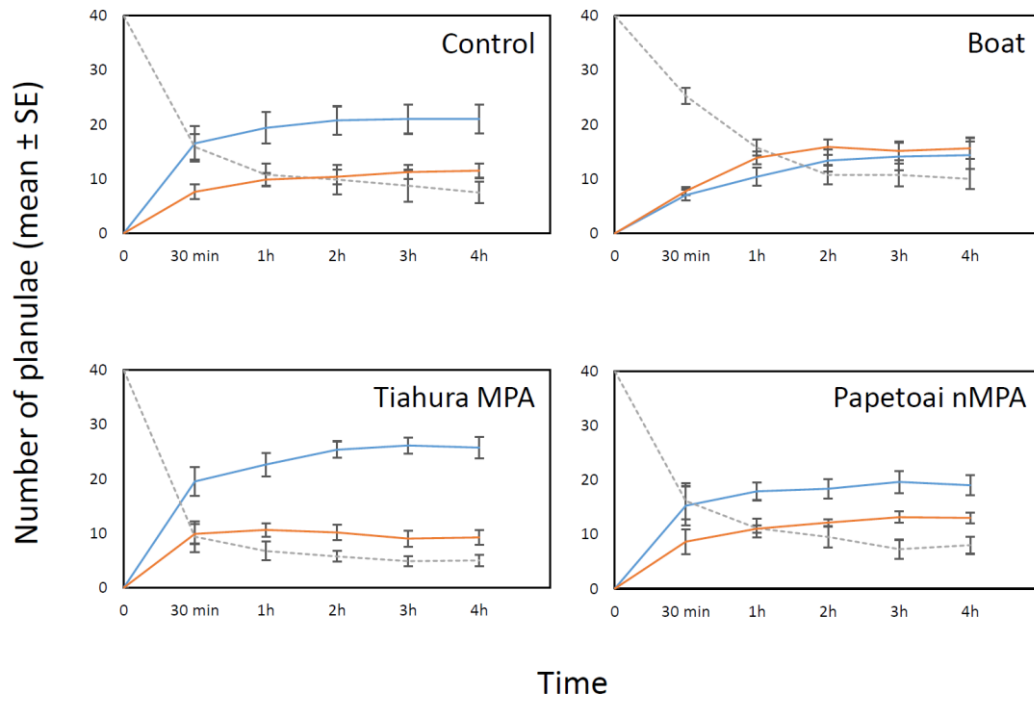
12

13 **Supplementary Figure S2.** Distribution of *P. damicornis* planulae (mean \pm SE) in the choice
 14 chambers over the duration of the experiment for the different sound treatments. Planulae in live CCA
 15 arms are in blue, in dead CCA arms are in red and in the central ‘no-choice’ compartment are in
 16 dashed grey. No noise (control) (n = 13), Tetaiuo MPA sounds (n = 12) / Gendron non-MPA sounds (n
 17 = 12), Tiahura MPA sounds (n = 12) / Papetoai non-MPA sounds (n = 12), Nuarei MPA sounds (n =
 18 12) / Temae non- MPA sounds (n=12) and boat noise (n = 13).

19



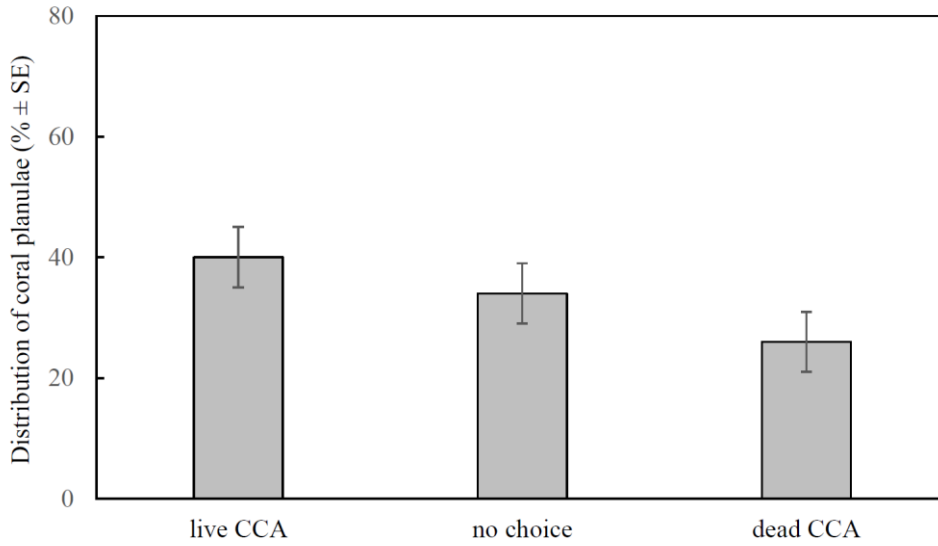
21 **Supplementary Figure S3.** Distribution of *A. cytherea* planulae (mean \pm SE) in the choice chambers
22 over the duration of the experiment for the different sound treatments. Planulae in live CCA arms are
23 in blue, in dead CCA arms are in red and in the central ‘no-choice’ compartment are in dashed grey.
24 Control (n = 8), boat noise (n = 8), Tiahura MPA sound (n = 8) and Papetoai non-MPA sound (n = 8).
25



26

27 **Supplementary Figure S4.** Distribution of coral planulae ($\% \pm \text{SE}$) in the choice chambers for the
28 preliminary trials with live CCA with ambient noise (Opunohu bay) vs. dead CCA (results at $t = 4\text{h}$; 8
29 replicates). The data showed no significant repulsion or attraction of ambient noise.

30



31