

Cytogenetic damage analysis in mice chronically exposed to low-dose internal tritium beta-particle radiation

SUPPLEMENTARY MATERIALS

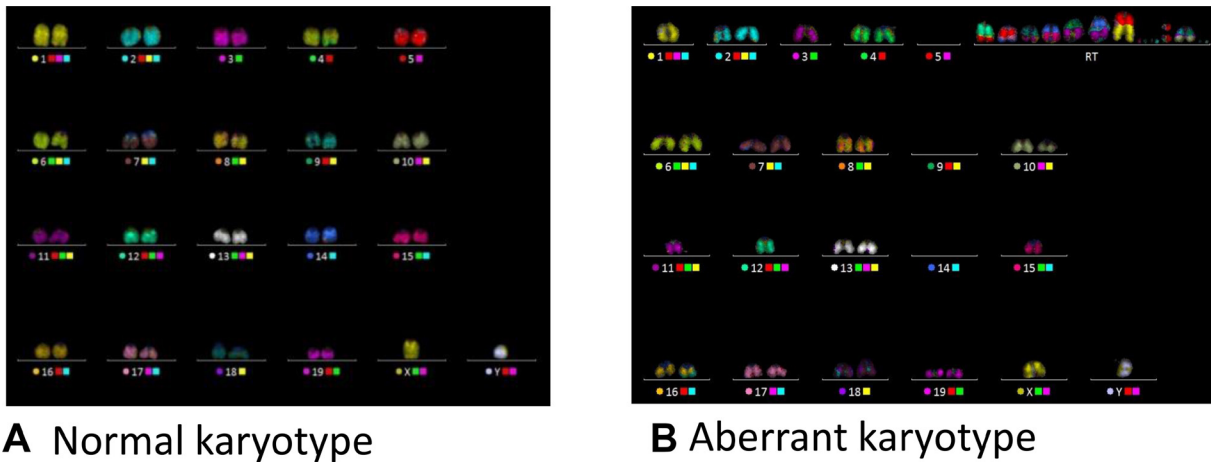


Figure 1: Mouse lymphocytes were processed using M-FISH as described in Materials and Methods and metaphase chromosomes were photographed and assembled together. (A) representative image of a normal karyotype. (B), example of an aberrant karyotype.