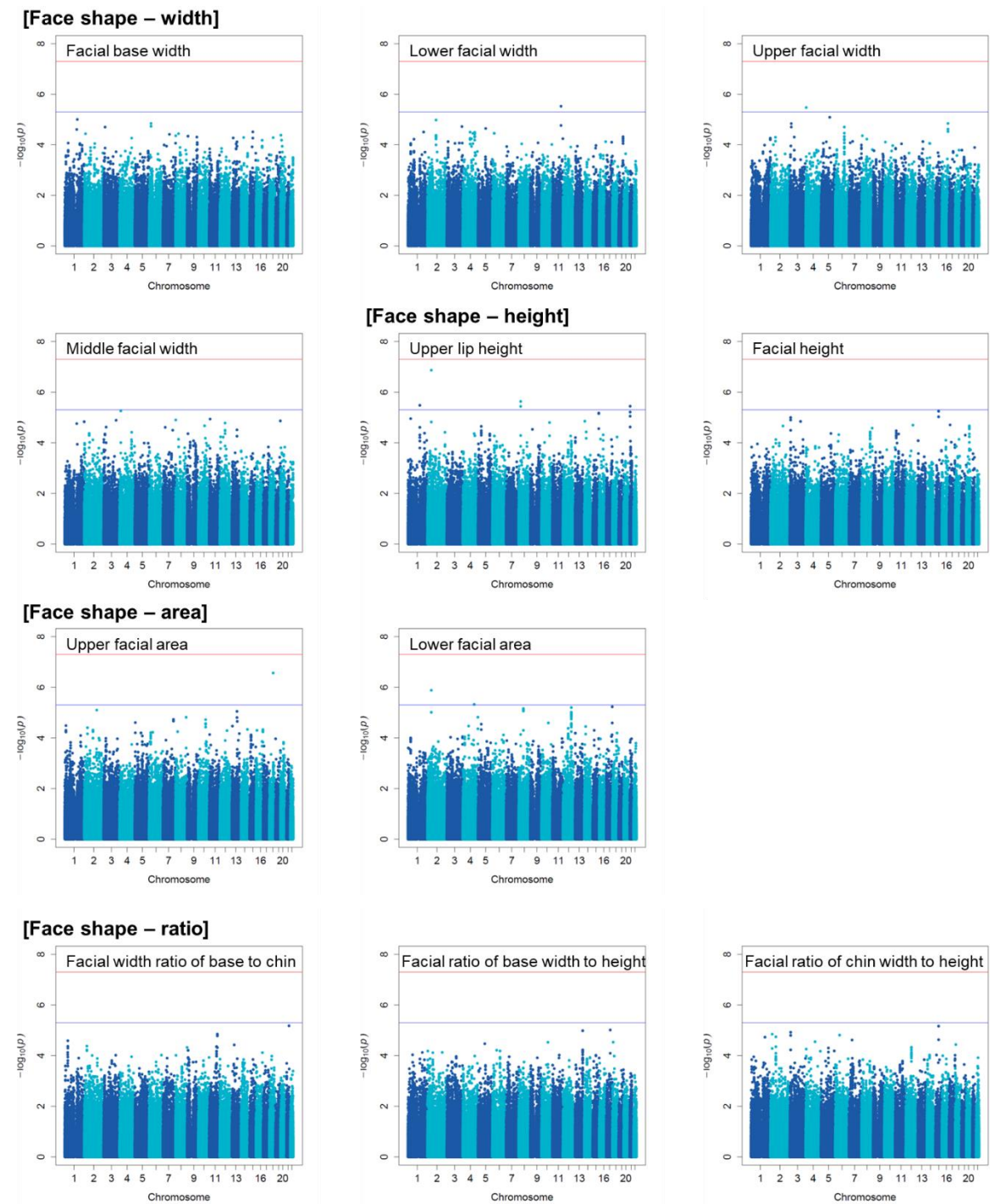


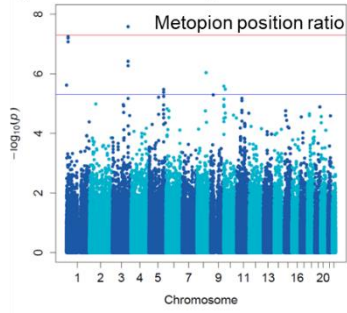
**Figure S3: Manhattan plots for the discovery GWAS (85 facial traits)**

$-\log_{10}(P)$  values are plotted against chromosomal base-pair positions. Green labels indicate significant loci showing associations with each facial trait in the discovery GWAS (Phase 1). The red line represents the genome-wide significance level ( $P = 5 \times 10^{-8}$ ), and the blue line represents the suggestive  $P$  value ( $P = 5 \times 10^{-6}$ ).

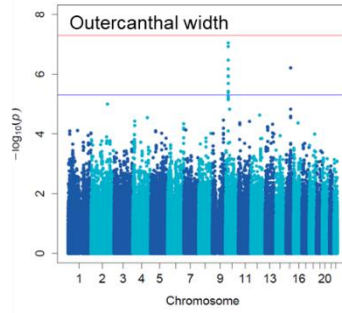
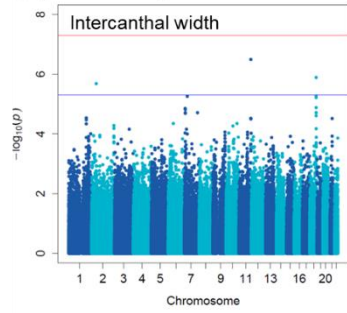




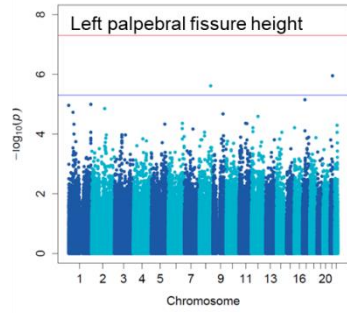
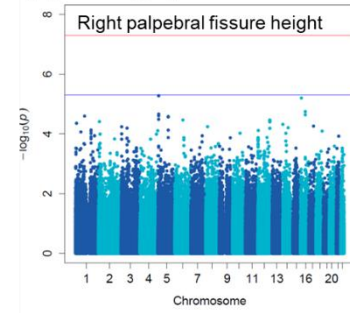
**[Forehead – ratio]**



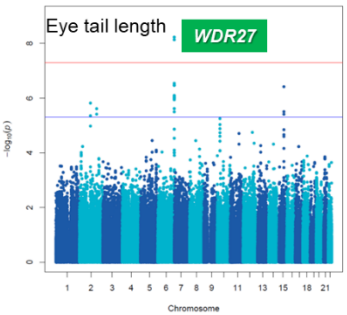
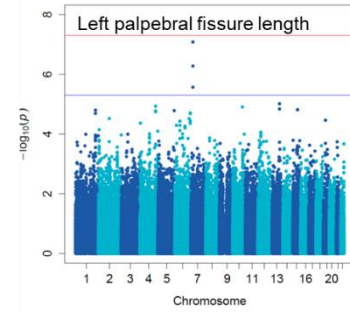
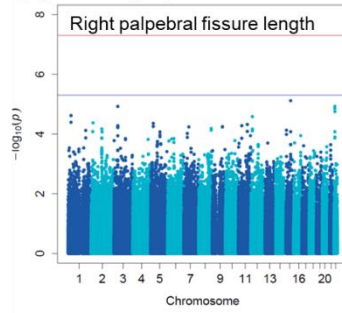
**[Eye – width]**



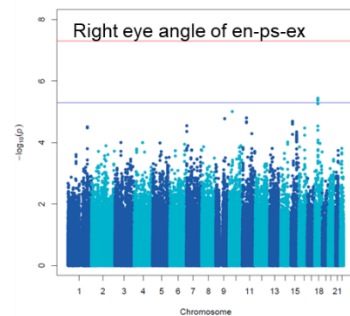
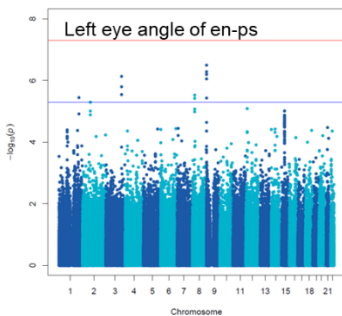
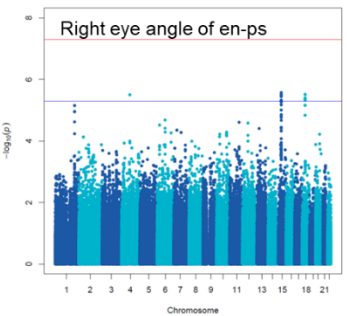
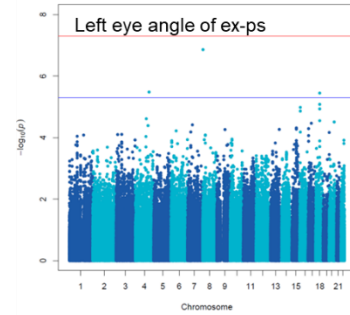
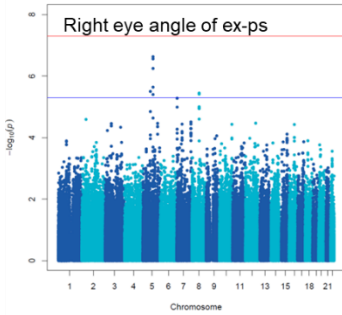
**[Eye – height]**

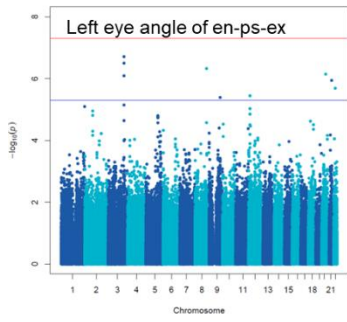


**[Eye – length]**

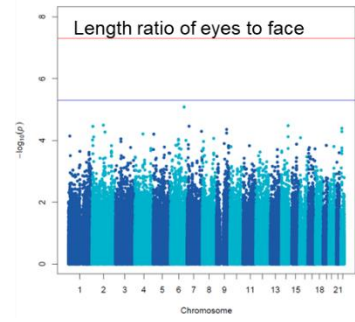
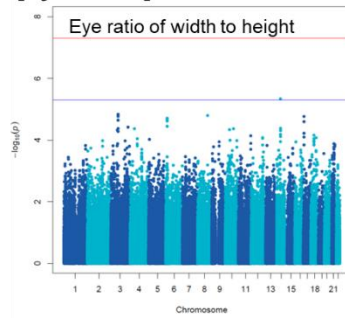


**[Eye – angle]**

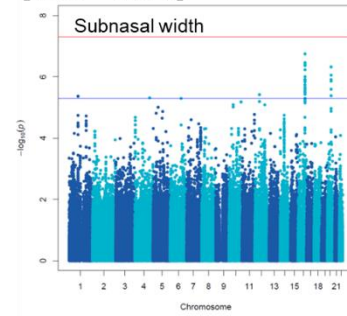




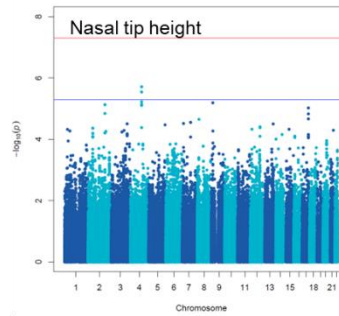
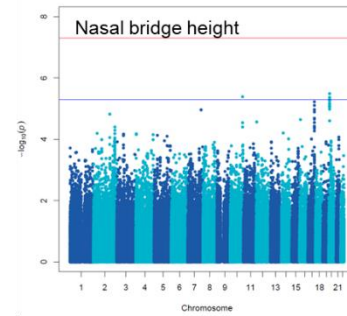
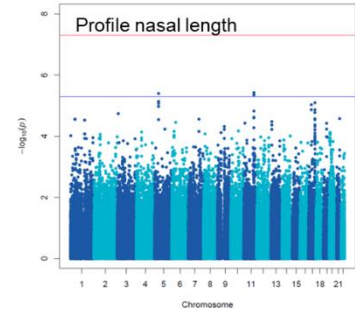
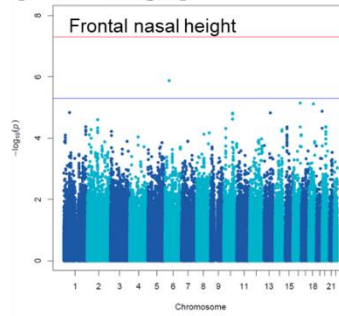
**[Eye – ratio]**



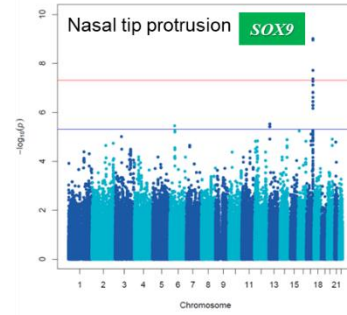
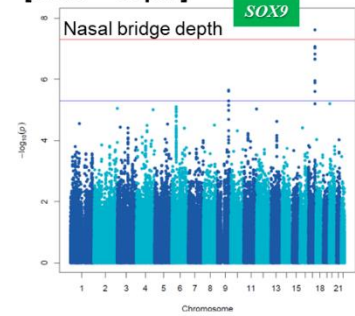
**[Nose – width]**



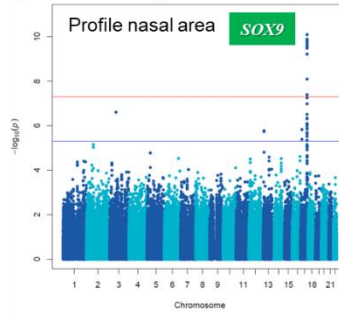
**[Nose – height]**



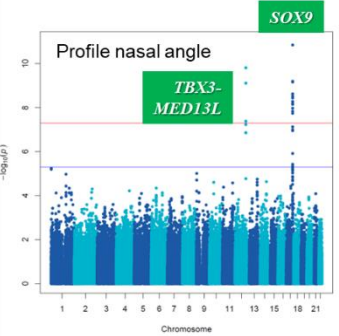
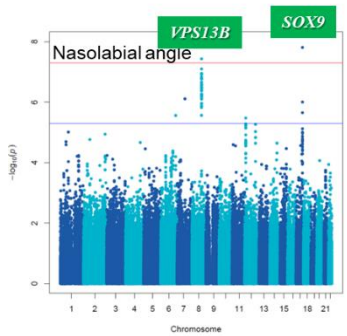
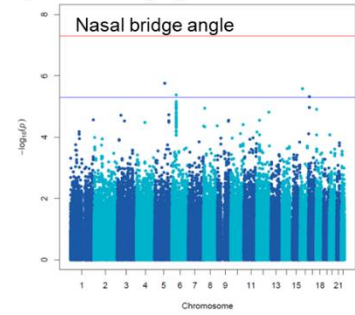
**[Nose – depth]**



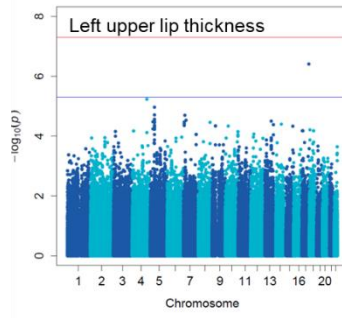
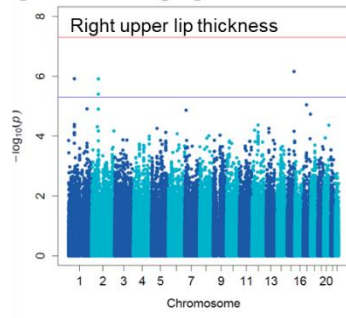
**[Nose – area]**



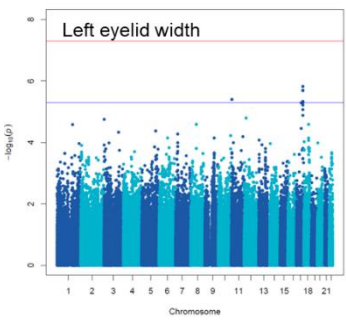
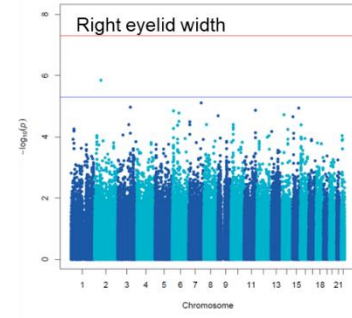
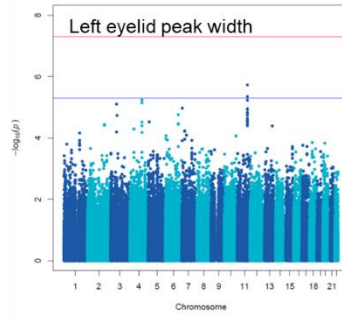
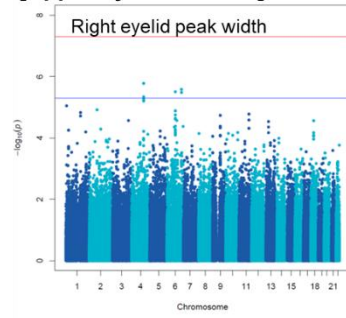
**[Nose – angle]**



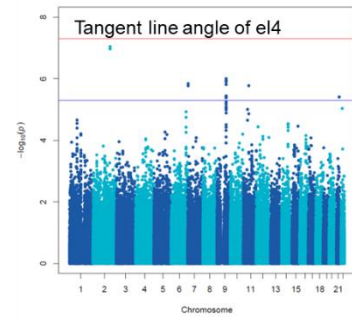
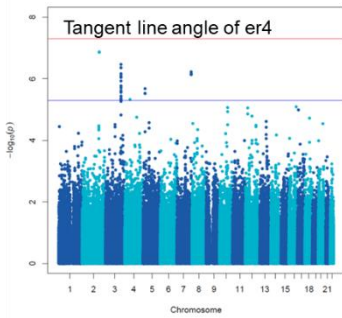
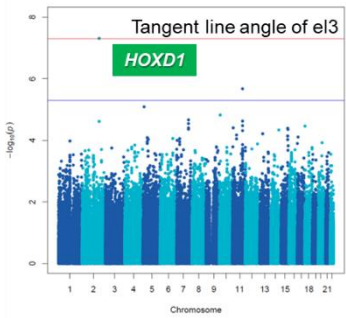
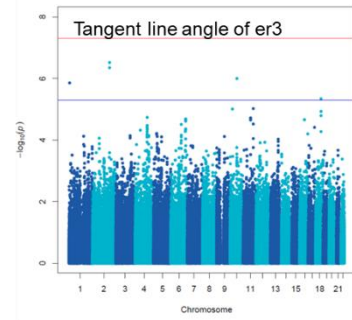
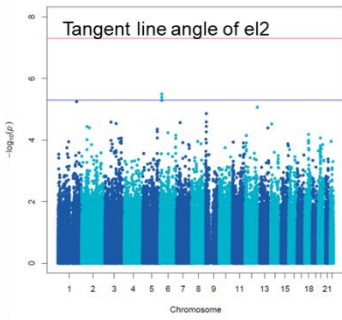
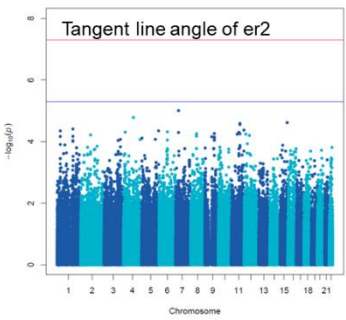
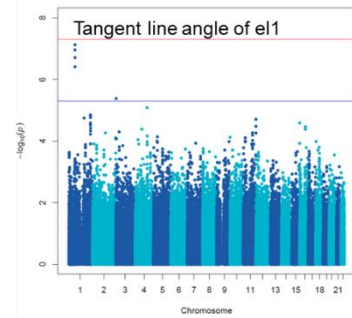
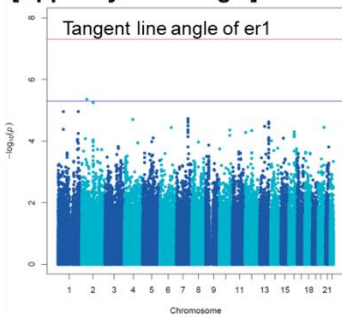
**[Mouth – height]**

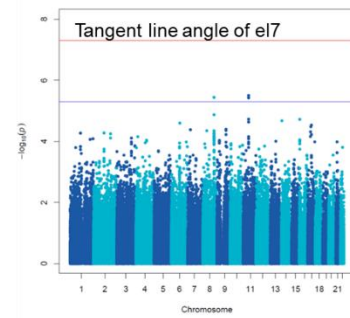
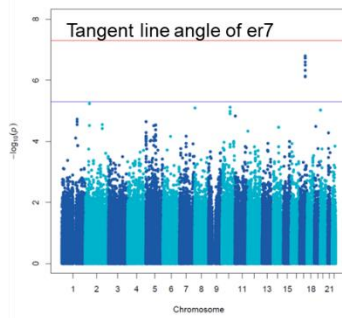
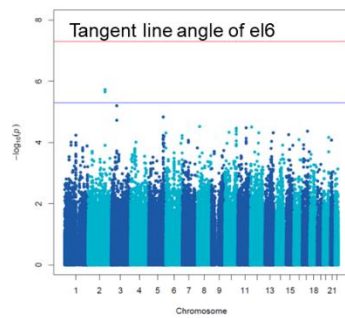
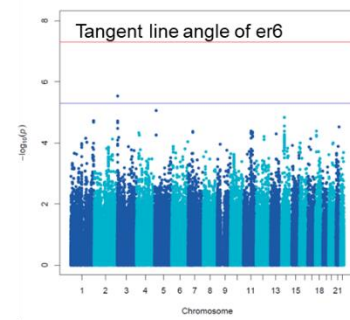
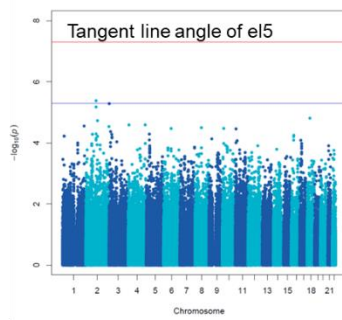
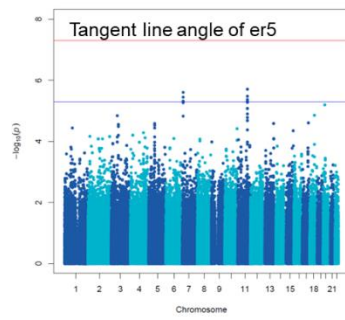


**[Upper eyelid – width]**

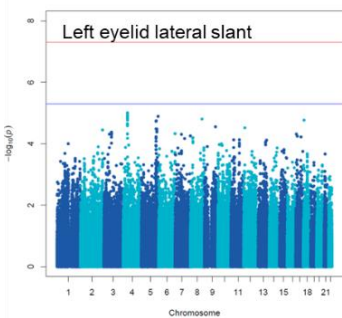
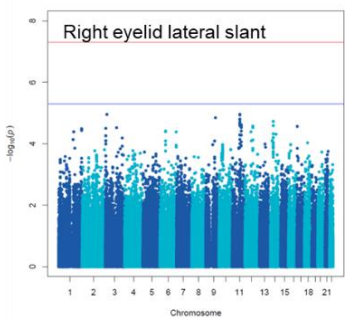
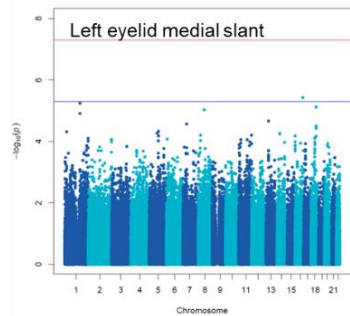
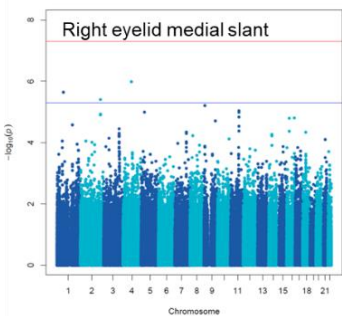
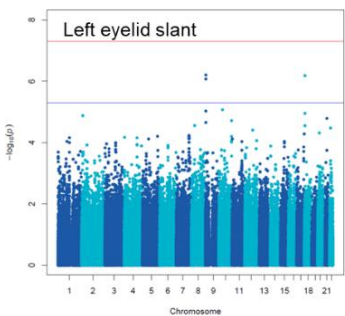
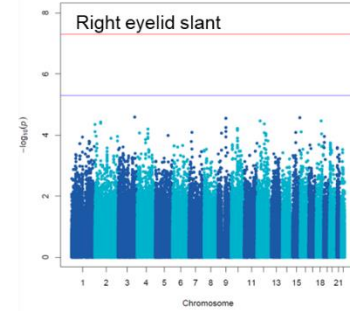
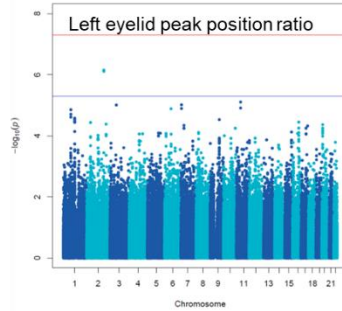
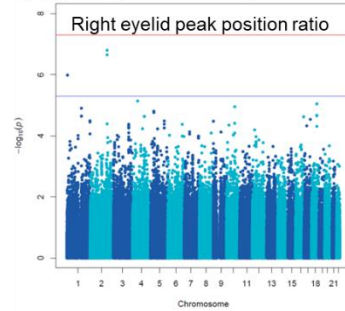


**[Upper eyelid – angle]**





**[Upper eyelid – ratio]**



**[Upper eyelid – curvature]**

