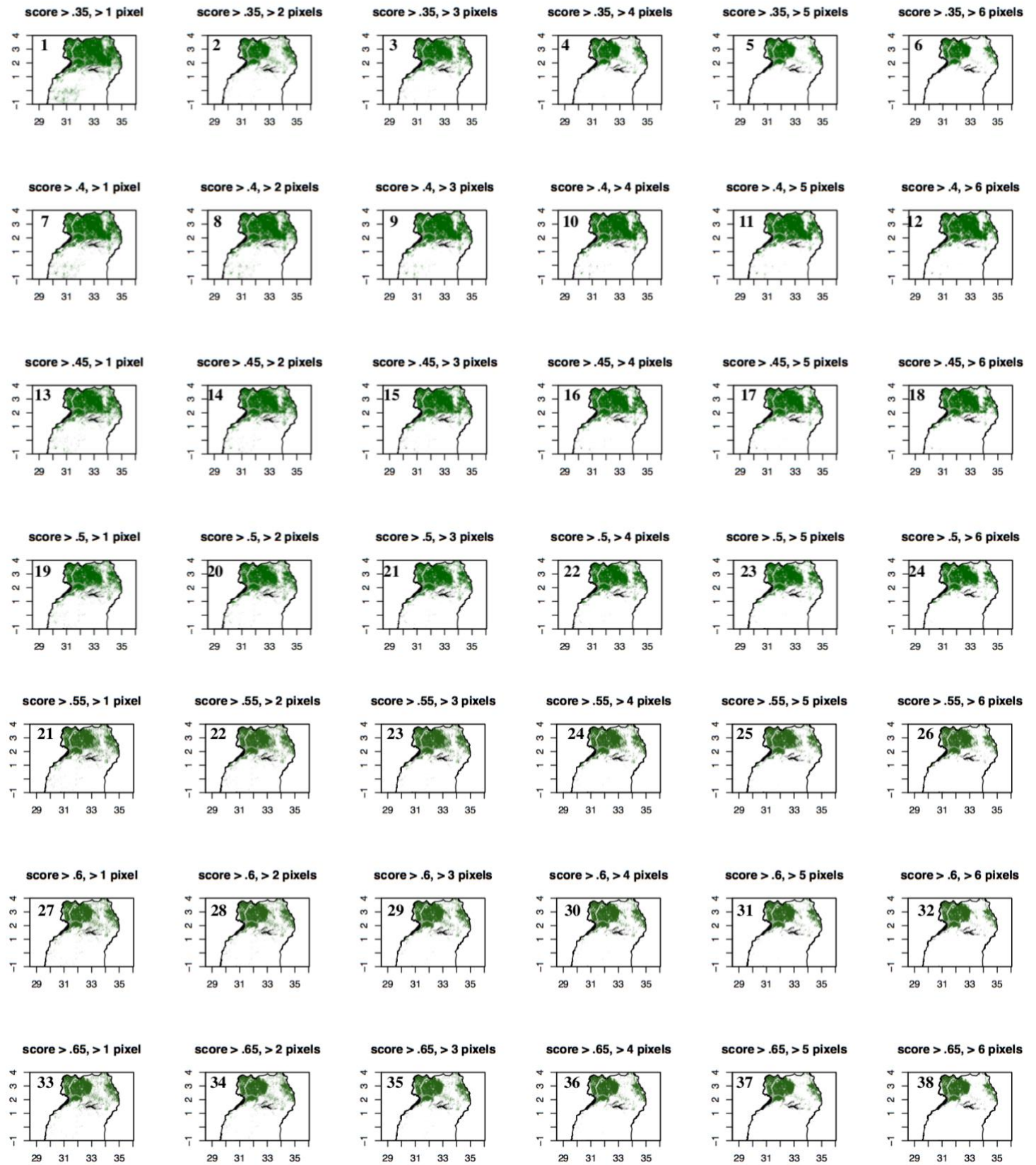
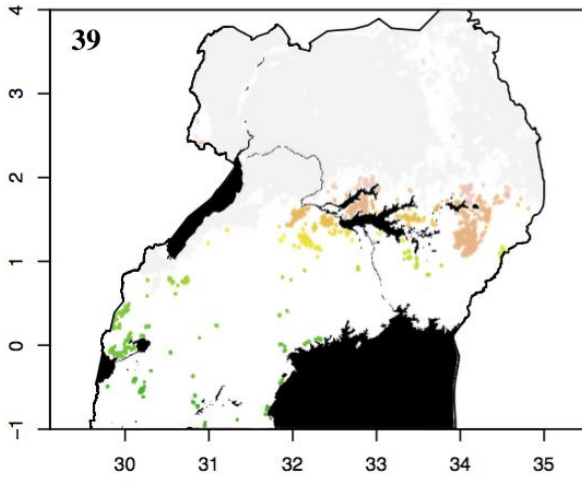


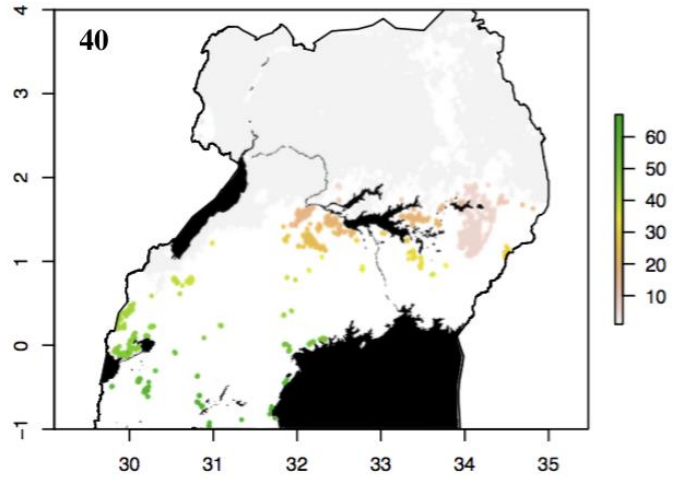
Appendix S4. Additional data providing visualization of net photosynthesis-based connectivity surface output (Fig. 2: O₄) with different parameter cutoffs for the final clumping parameters used to identify discrete landscape patches (Fig. 2: M₅). Maps 1-38 (page 1) show data used to choose the appropriate connectivity surface score cutoff (0.35-0.65) and minimum number of pixels considered (1-6). Maps 39-42 (page 2) show data used to choose the appropriate distance between connectivity surface patches (5-8 km) required to consider it “isolated”.



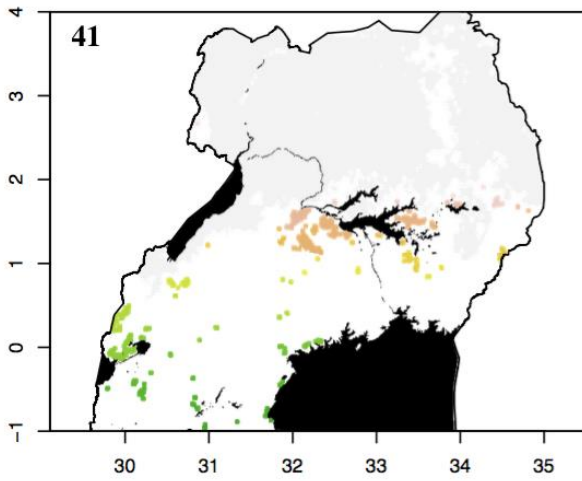
score > .5, > 3 pixels, > 5 km apart



score > .5, > 3 pixels, > 6 km apart



score > .5, > 3 pixels, > 7 km apart



score > .5, > 3 pixels, > 8 km apart

