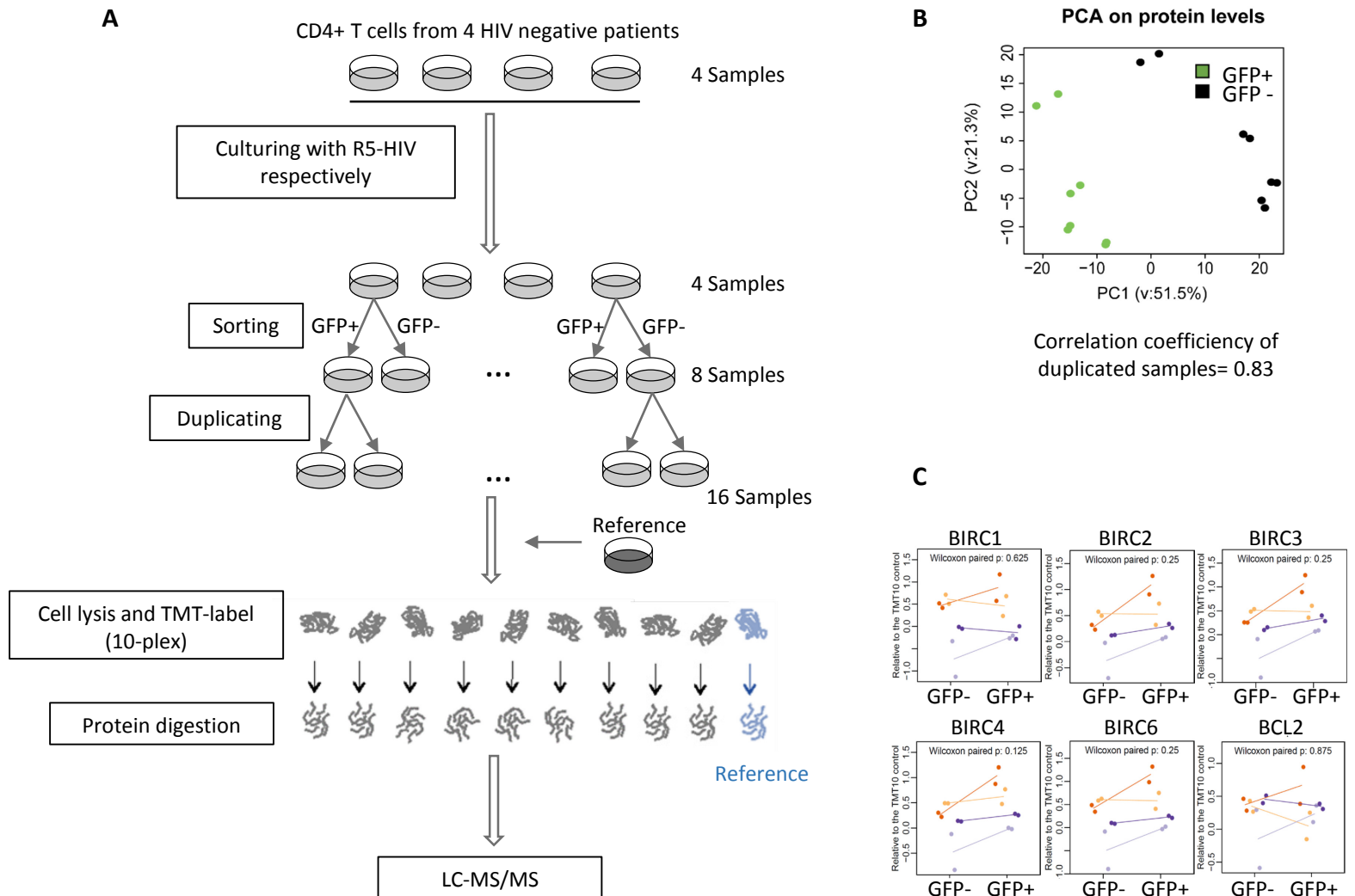
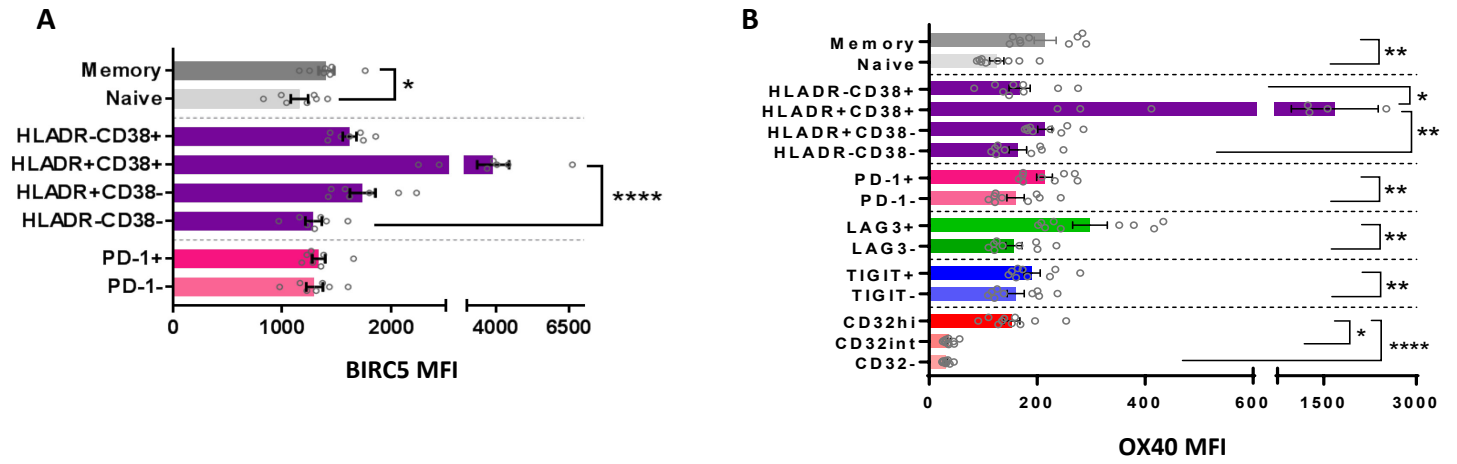


Figure S1. Related to Figure 1.



Protein expression profiling of HIV-1-infected CD4 T cells. (A) Schematic representation of experimental workflow for analysis of protein expression signatures in HIV-1-infected CD4 T cells. (B): Principal component analysis indicating global protein expression patterns of GFP+ and GFP- CD4 T cells analyzed in duplicate. (C): Protein expression of indicated anti-apoptosis proteins in GFP+ and GFP- CD4 T cells from study subjects. Duplicates from each of the four study patients (indicated by distinct color labeling) are shown; lines link corresponding data (mean of duplicates) from GFP+ and GFP- CD4 T cells.

Figure S2. Related to Figure 4.



Phenotypic properties of OX40+ CD4 T cells. (A-B) Mean fluorescence intensity of BIRC5 and OX40 in indicated CD4 T cell populations. Data from 9 ART-treated subjects are shown.

Table S3. Related to Figure 4; Clusters of identical HIV-1 sequences detected in OX40+ and OX40- CD4 T cells from five ART-treated study subjects.

Patient	Cluster	Length (bp)	Memory		Naïve		Total
			OX40+	OX40-	OX40+	OX40-	
Pt.1	Cluster34	420	3				3
Pt.1	Cluster36	9004	3				3
Pt.1	Cluster38	7061	15	1			16
Pt.1	Cluster40	2852	1		1		2
Pt.1	Cluster65	7949	1		3		4
Pt.2	Cluster80	626	1		2		3
Pt.2	Cluster81	4765	3		7	6	16
Pt.2	Cluster82	364	1		1		2
Pt.2	Cluster110	4767	10				10
Pt.2	Cluster111	8919	1			1	2
Pt.3	Cluster112	1609	2				2
Pt.3	Cluster114	1685	14	5			19
Pt.3	Cluster118	4664	1	1			2
Pt.3	Cluster123	1972	1	1			2
Pt.3	Cluster124	3551	1	1			2
Pt.3	Cluster125	6431	13	3			16
Pt.3	Cluster128	3216	1	1			2
Pt.3	Cluster129	3612	2	1			3
Pt.3	Cluster130	883			1	1	2
Pt.3	Cluster131	2129	3				3
Pt.3	Cluster132	557	2				2
Pt.3	Cluster133	8501	3				3
Pt.3	Cluster134	2974	2				2
Pt.3	Cluster135	4222	3				3
Pt.3	Cluster136	4721	4	1			5
Pt.3	Cluster165	2318	3				3
Pt.3	Cluster175	879	4				4
Pt.3	Cluster179	9007	2				2
Pt.3	Cluster181	5226	3				3
Pt.3	Cluster202	355	2				2
Pt.3	Cluster203	4721	2				2
Pt.3	Cluster205	6140	2				2
Pt.3	Cluster206	5231	2				2
Pt.4	Cluster137	8939	2	5			7
Pt.4	Cluster139	4936	6	1			7
Pt.4	Cluster142	2544	2				2
Pt.4	Cluster143	4395	2				2
Pt.4	Cluster144	5024	1	5			6
Pt.4	Cluster145	9017		2			2
Pt.4	Cluster146	8988			2		2
Pt.4	Cluster147	4349			2		2
Pt.4	Cluster148	5052			2	1	3
Pt.4	Cluster150	1041				2	2
Pt.4	Cluster151	4941	1	2			3
Pt.4	Cluster152	2601	2				2
Pt.4	Cluster153	5467	4	1			5
Pt.4	Cluster154	8657	2				2
Pt.4	Cluster156	4541	2				2
Pt.4	Cluster157	8957		2			2
Pt.4	Cluster159	8867		2			2
Pt.4	Cluster184	6752	2				2
Pt.4	Cluster193	4413	2				2
Pt.4	Cluster197	6592	2				2
Pt.4	Cluster231	8987	2				2
Pt.5	Cluster26	1629	4	5		1	10
Pt.5	Cluster31	876	2				2
Pt.5	Cluster53	1874	1	1			2
Pt.5	Cluster95	9082	2		1		3
Pt.5	Cluster96	9091	2	1			3
Pt.5	Cluster97	3743	2	2			4
Pt.5	Cluster100	4737	3				3
Pt.5	Cluster102	9138	2	1			3
Pt.5	Cluster219	9104	1	1			2
Pt.5	Cluster220	9005	1	1			2
Pt.5	Cluster222	9094	2				2
Pt.5	Cluster233	2103		2			2
Pt.5	Cluster234	1063		2			2
Pt.5	Cluster235	1629	2	5			7
Pt.5	Cluster236	876	4				4
Grand Total (sequences)			171	56	22	12	261

Table S4. Related to Figure 6; Clusters of identical HIV-1 sequences detected in CD8 T cell- and NK cell-depleted PBMCs treated with BIRC5 inhibitor or DMSO control from eight ART-treated study subjects.

Patient	Cluster	Length (bp)	Control	BIRC5 Inhibitor	Grand Total
Pt.1	Cluster20	6813	3		3
Pt.1	Cluster48	1331	7	8	15
Pt.1	Cluster49	470	8	1	9
Pt.1	Cluster90	1705	1	1	2
Pt.1	Cluster93	4479	2		2
Pt.1	Cluster103	677	2		2
Pt.2	Cluster27	877	3	2	5
Pt.2	Cluster50	1630	5	10	15
Pt.2	Cluster52	4715	2		2
Pt.2	Cluster54	1409	2		2
Pt.2	Cluster94	5478		3	3
Pt.2	Cluster95	9082	1	1	2
Pt.2	Cluster96	9091	1	1	2
Pt.2	Cluster97	3743	2		2
Pt.2	Cluster100	4737	2		2
Pt.2	Cluster102	9138	1	1	2
Pt.2	Cluster107	3743	2		2
Pt.4	Cluster81	4765	2		2
Pt.4	Cluster187	8998	2		2
Pt.4	Cluster188	1349	2		2
Pt.5	Cluster139	4936	2		2
Pt.5	Cluster140	1662		2	2
Pt.5	Cluster144	5024	3		3
Pt.5	Cluster193	4413	2		2
Pt.5	Cluster198	881	2		2
Pt.6	Cluster217	2382	3		3
Pt.6	Cluster237	250	9		9
Pt.6	Cluster238	1533	4		4
Pt.6	Cluster239	6023	11		11
Pt.6	Cluster240	2593	15		15
Pt.6	Cluster241	5114	7		7
Pt.6	Cluster242	1362	11		11
Pt.6	Cluster243	3957	14		14
Pt.6	Cluster244	1362	3		3
Pt.6	Cluster245	7409	2		2
Pt.6	Cluster246	314	2		2
Pt.6	Cluster247	9007	3		3
Pt.6	Cluster248	6023	2		2
Pt.6	Cluster249	3755	5		5
Pt.6	Cluster250	9014	4		4
Pt.6	Cluster251	5088	2		2
Pt.6	Cluster252	1370	2		2
Pt.6	Cluster253	950	2		2
Pt.6	Cluster254	4234	6	1	7
Pt.6	Cluster255	5312	2		2
Pt.6	Cluster256	853	4		4
Pt.6	Cluster257	2170	3		3
Pt.6	Cluster259	1806	3		3
Pt.7	Cluster223	1346		3	3
Pt.7	Cluster224	1313		2	2
Pt.7	Cluster226	807	12	1	13
Pt.7	Cluster227	5277	1	1	2
Pt.7	Cluster228	9024	2		2
Pt.7	Cluster229	3650	3		3
Pt.7	Cluster230	4366	2		2
Pt.8	Cluster199	5050	7	2	9
Grand Total (sequences)			205	40	245