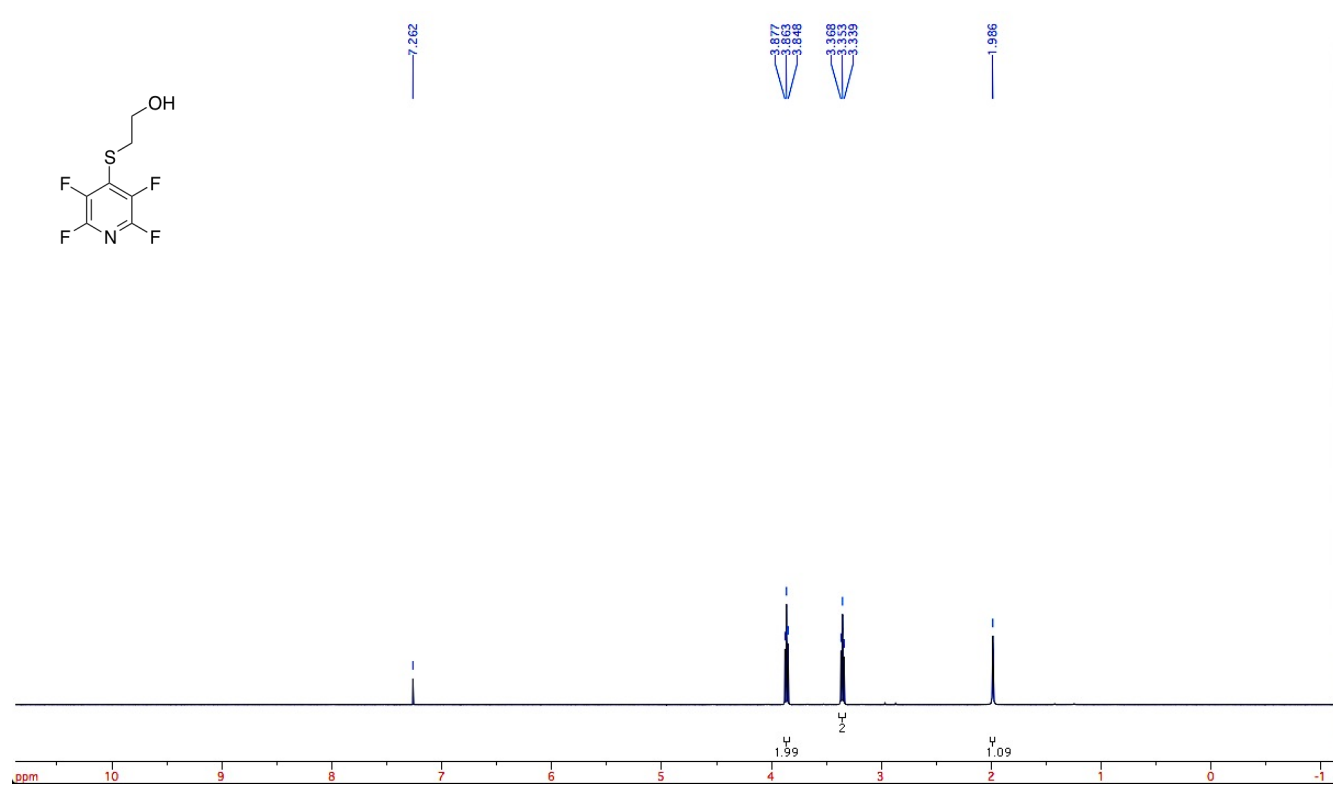
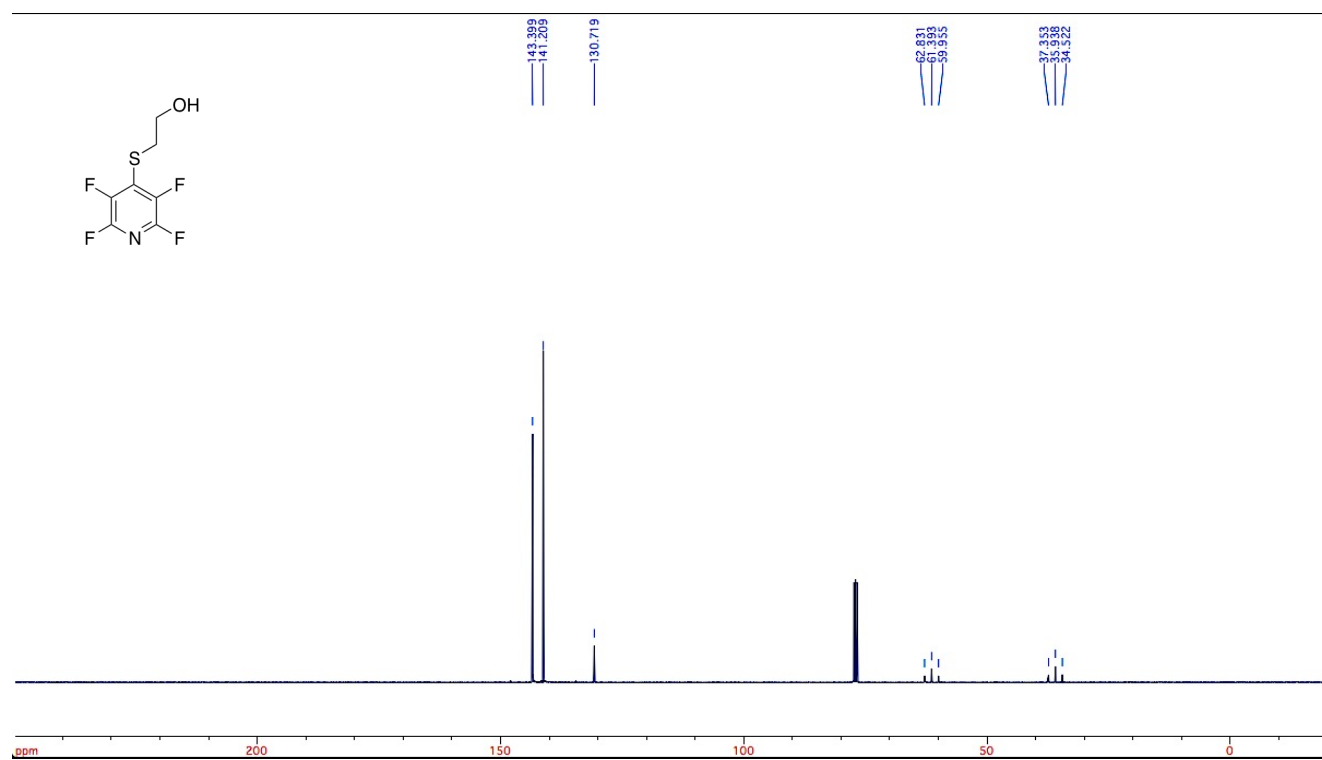


NMR spectra

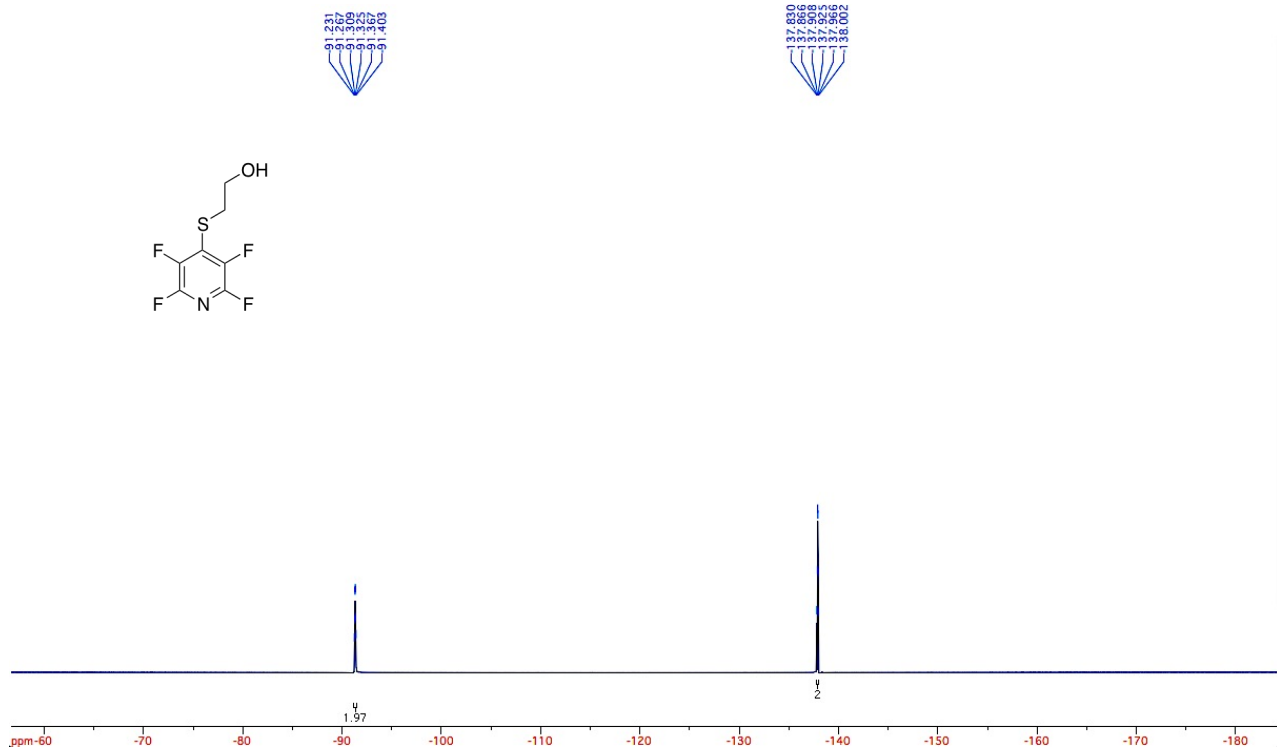
^1H NMR



^{13}C $\{^{19}\text{F}\}$ NMR

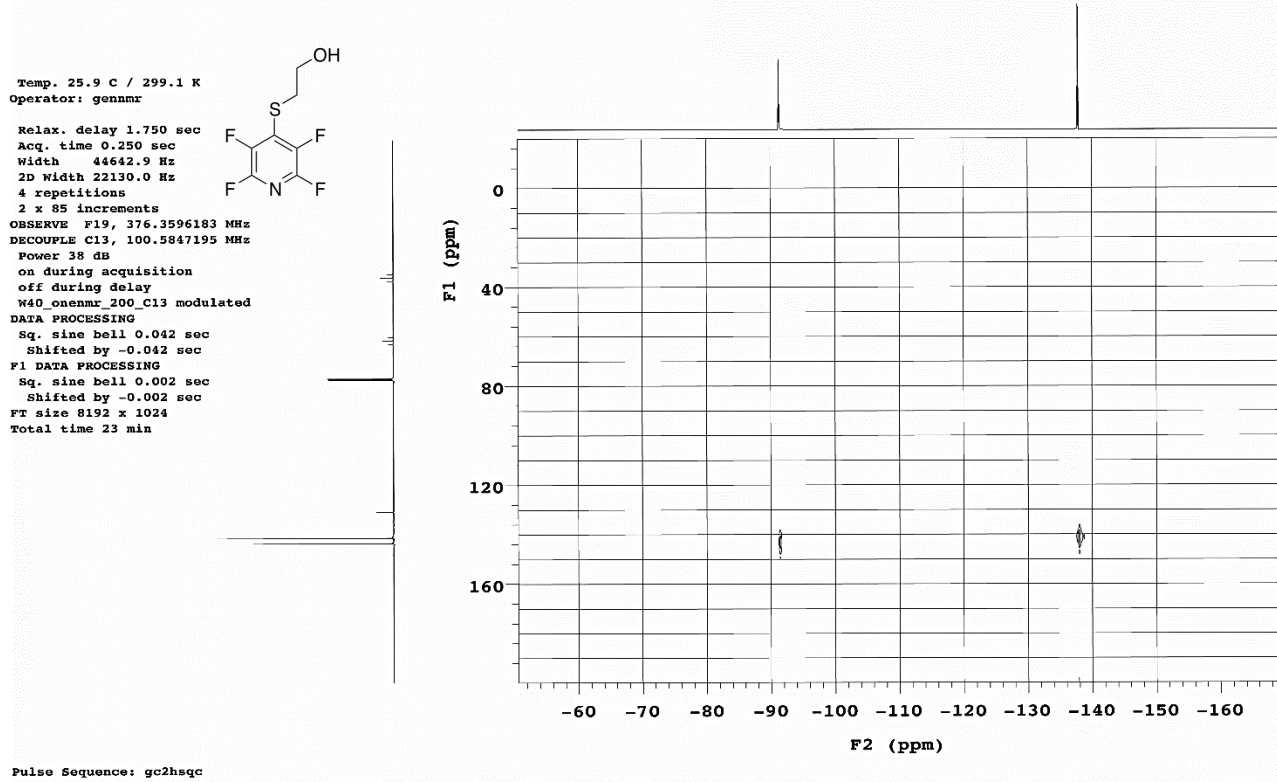


¹⁹F NMR

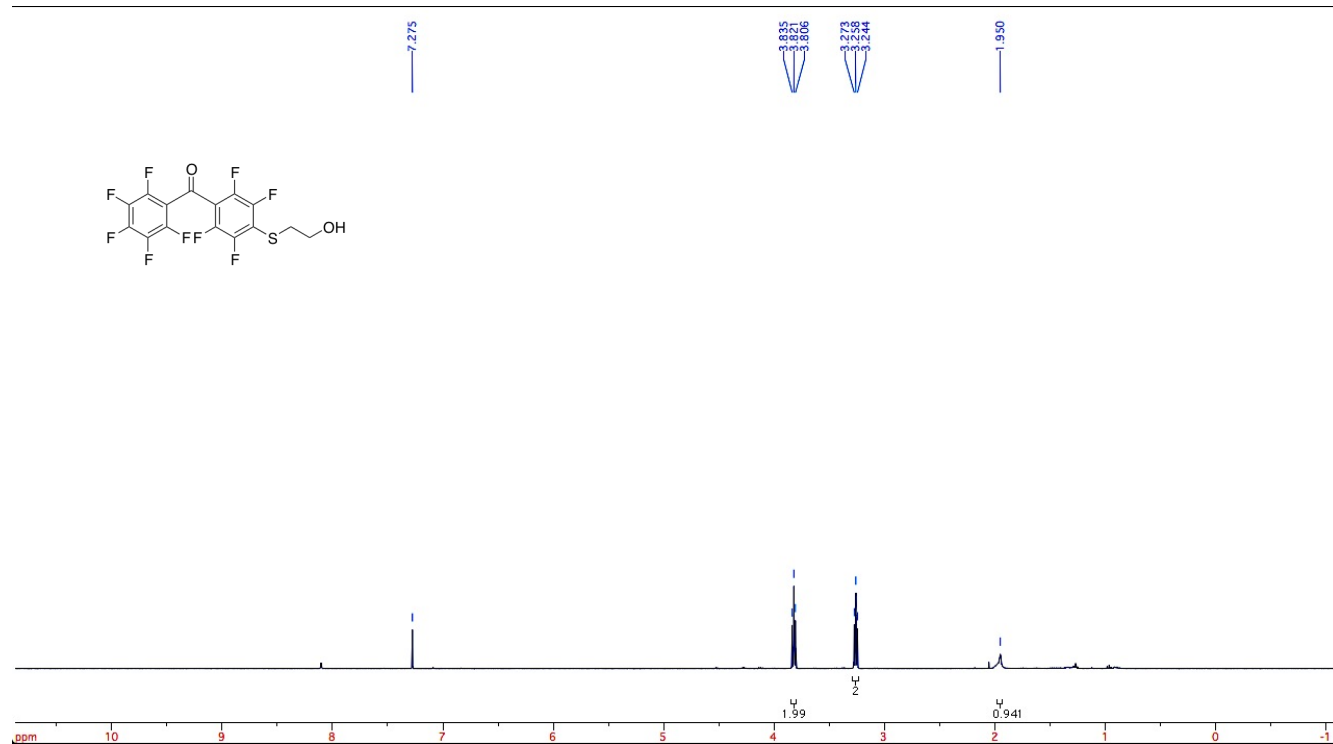


gHSQC

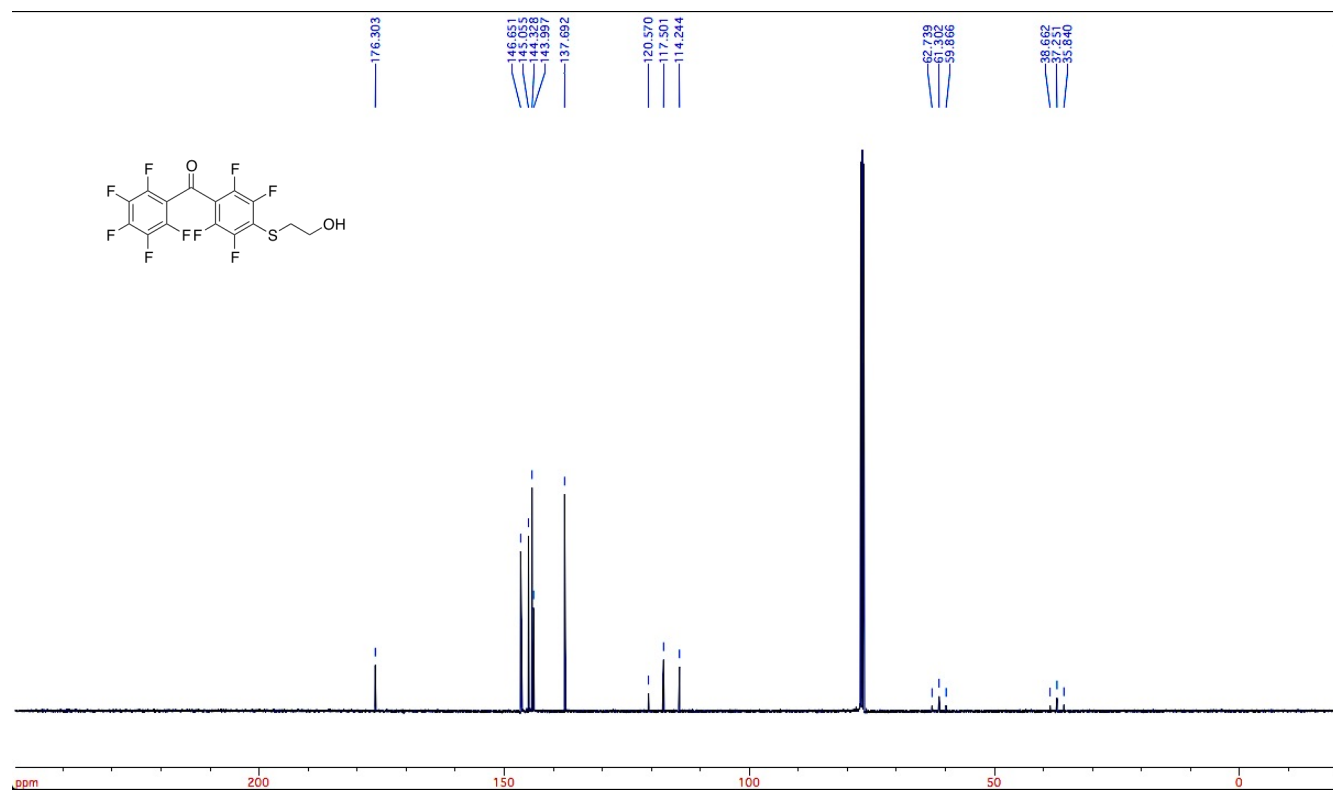
376.318 MHz F19 gc2hsqc in cdcl3, temp 25.9 C -> actual temp = 27.0 C, onenmr probe



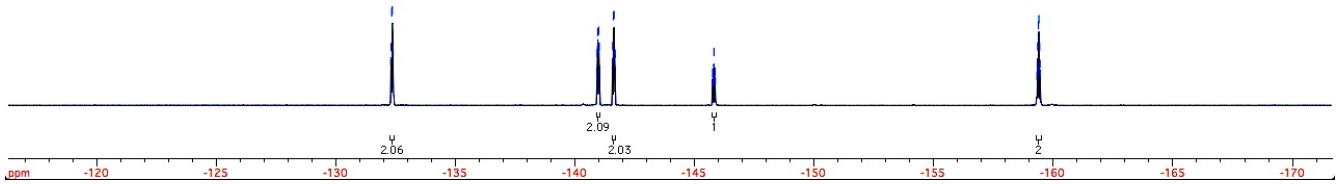
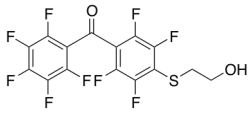
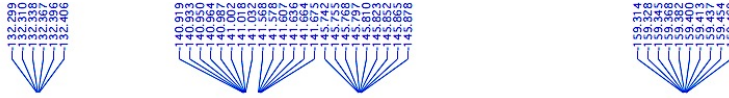
^1H NMR



^{13}C $\{^{19}\text{F}\}$ NMR



¹⁹F NMR

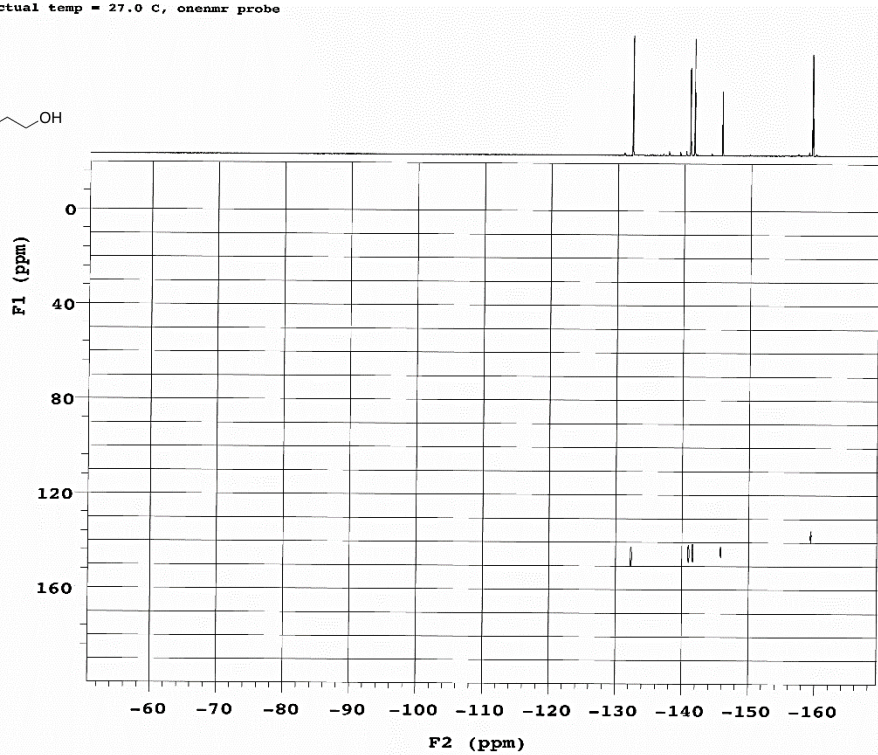
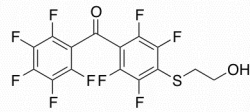


gHSQC

376.318 MHz F19 gc2hsqc in cdcl3, temp 25.9 C -> actual temp = 27.0 C, onenmr probe

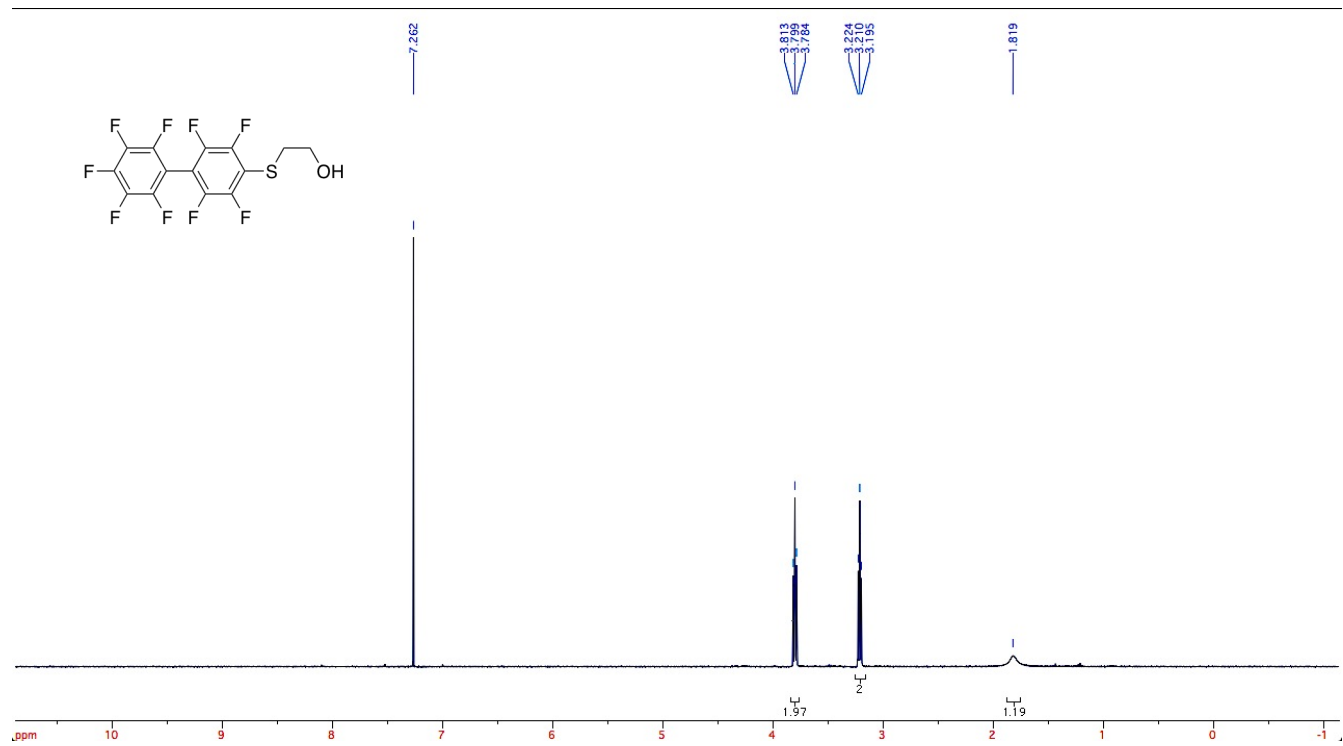
Temp. 25.9 C / 299.1 K
Operator: gennmr

Relax. delay 1.750 sec
Acq. time 0.250 sec
Width 44642.9 Hz
2D Width 22130.0 Hz
4 repetitions
2 x 85 increments
OBSERVE F19, 376.3596183 MHz
DECOUPLE C13, 100.5847195 MHz
Power 38 dB
on during acquisition
off during delay
W40_onenmr_200_C13 modulated
DATA PROCESSING
Sq. sine bell 0.042 sec
Shifted by -0.042 sec
F1 DATA PROCESSING
Sq. sine bell 0.002 sec
Shifted by -0.002 sec
FT size 8192 x 1024
Total time 23 min

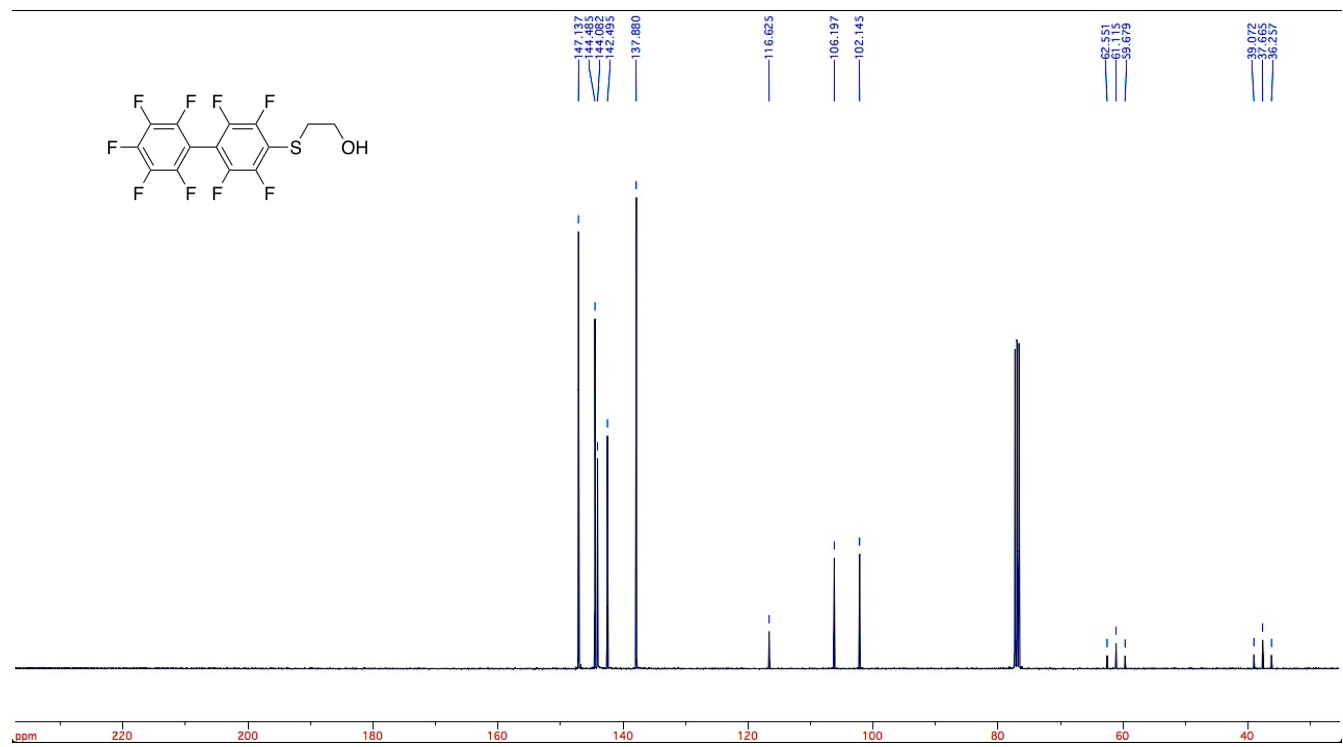


Pulse Sequence: gc2hsqc

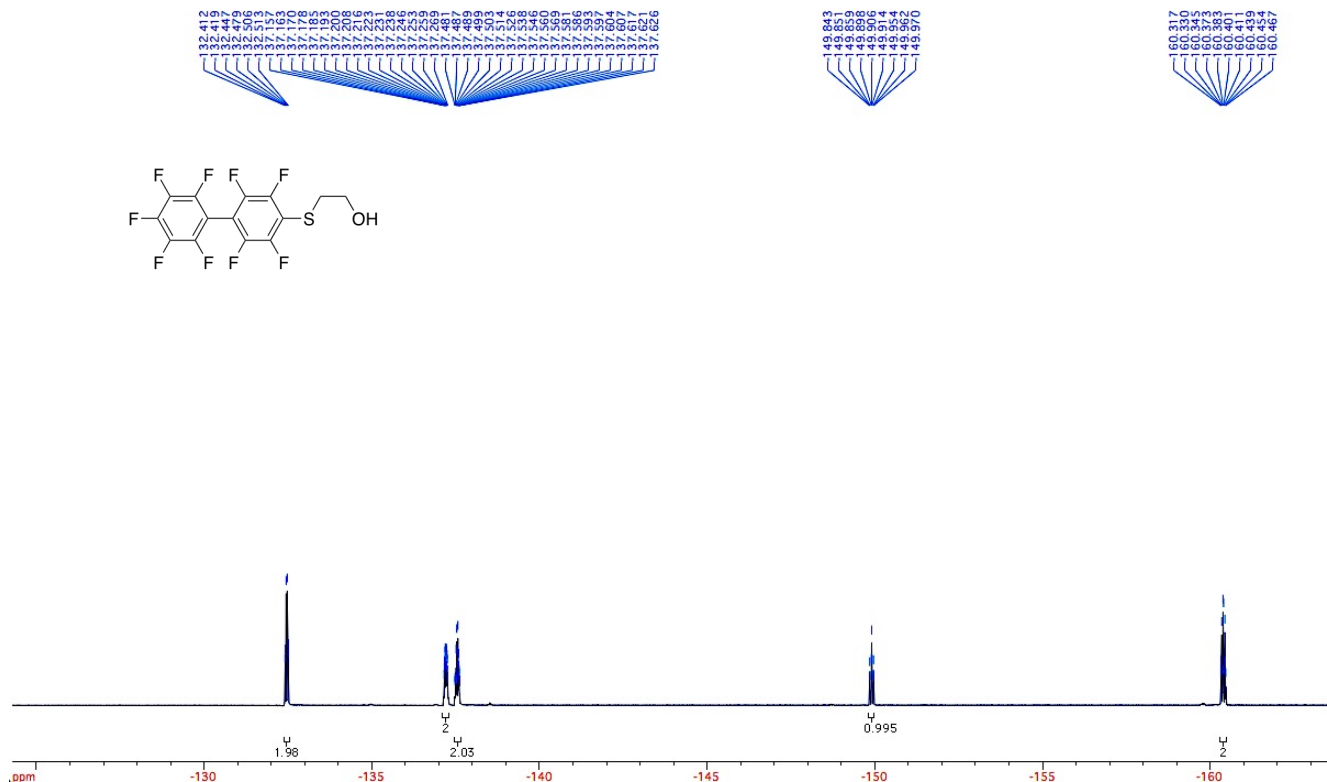
^1H NMR



^{13}C $\{^{19}\text{F}\}$ NMR

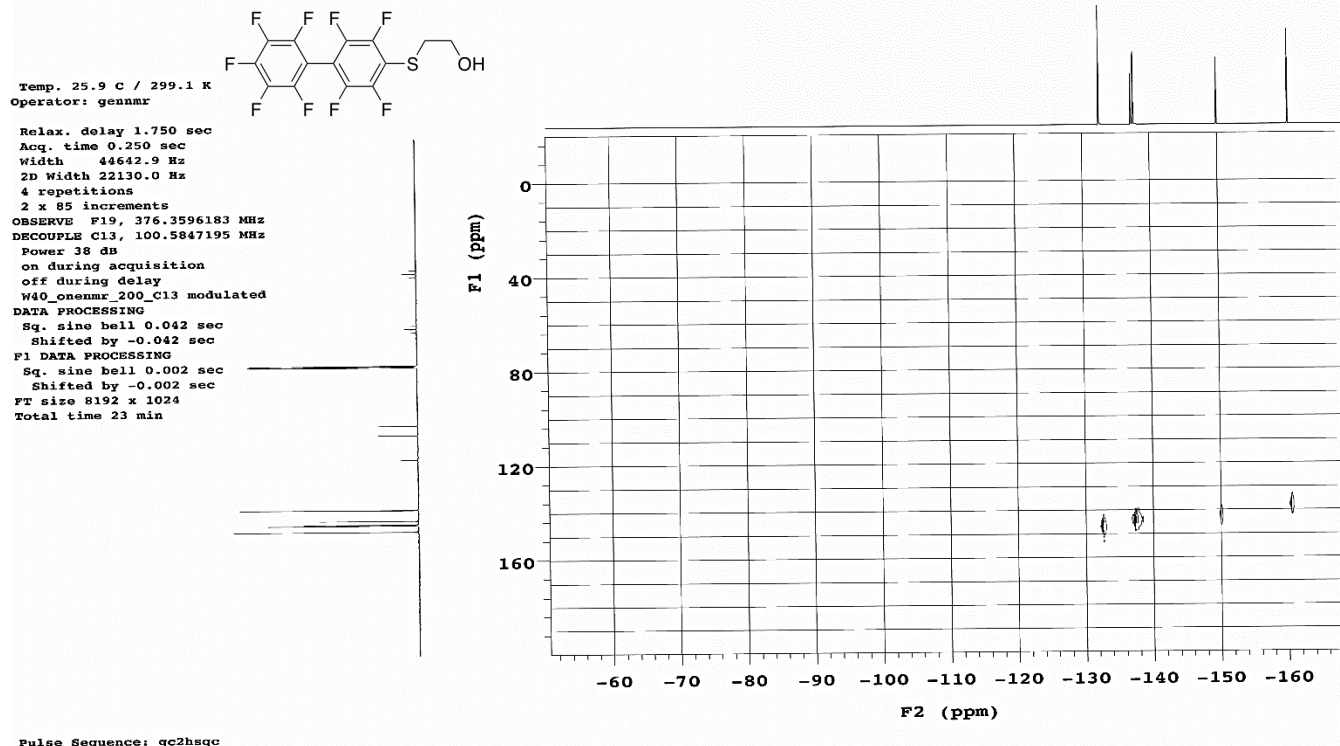


¹⁹F NMR

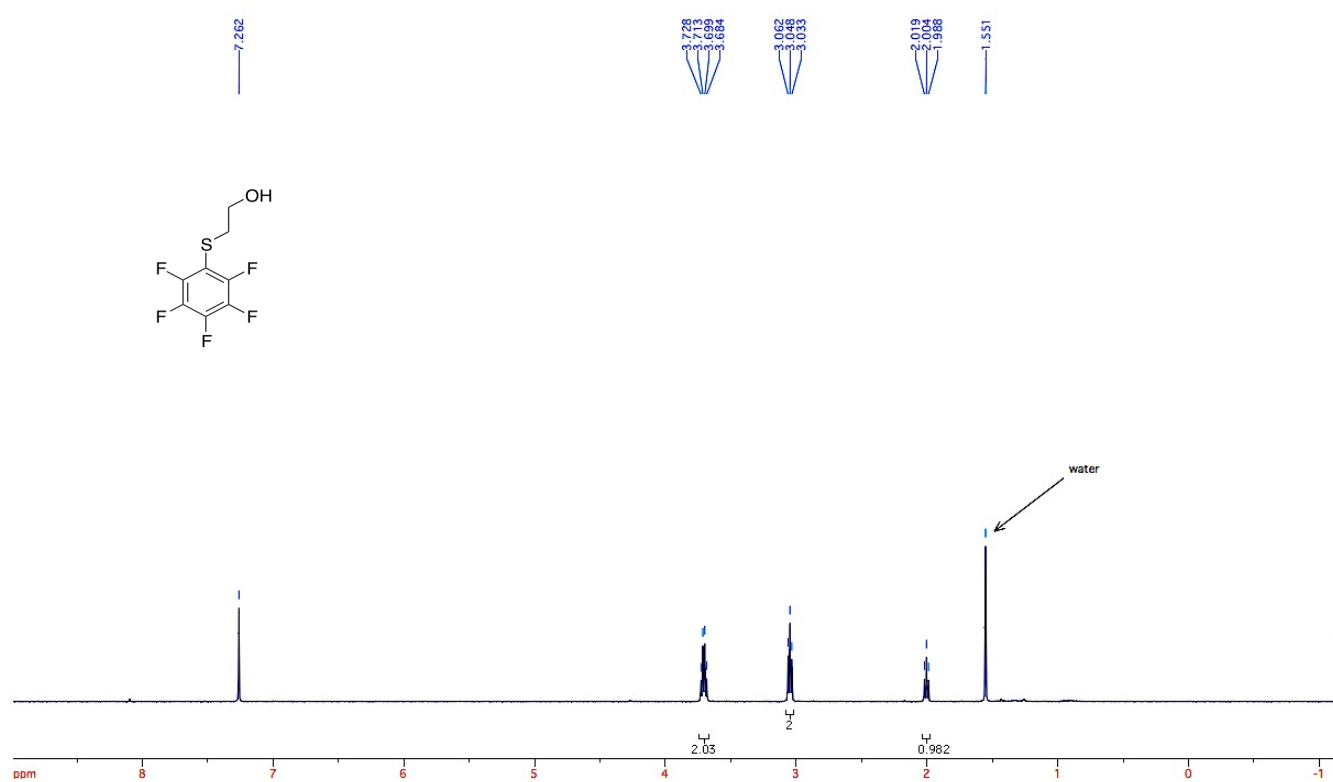


gHSQC

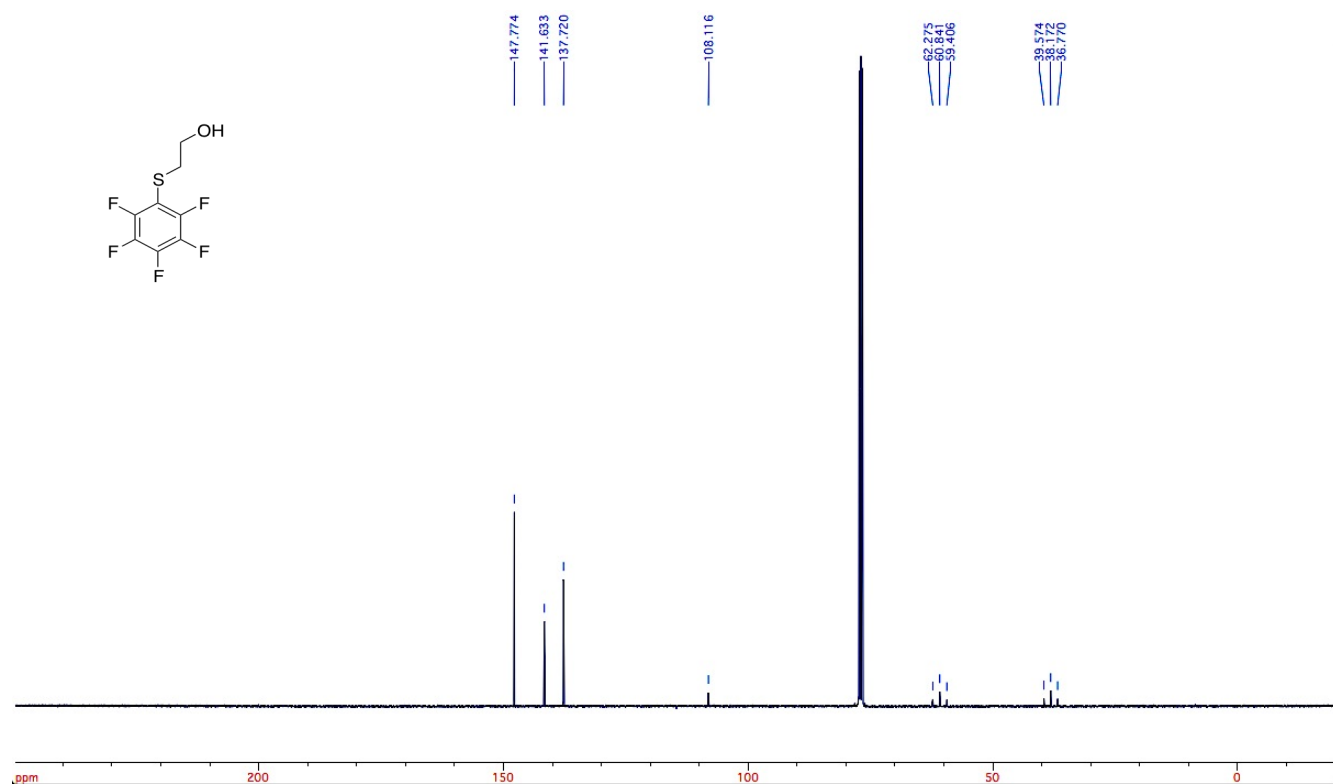
376.318 MHz F19 gc2hsqc in cdcl3, temp 25.9 C -> actual temp = 27.0 C, onenmr probe



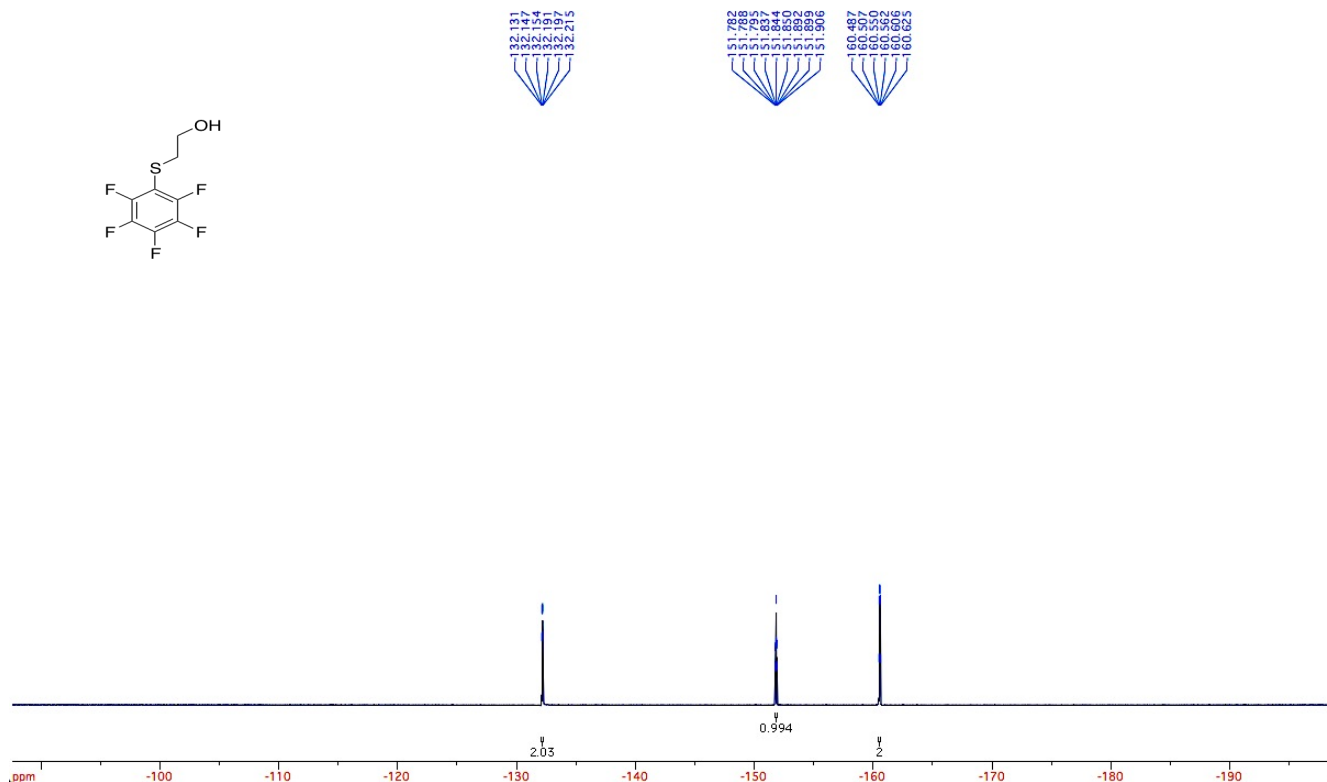
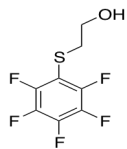
^1H NMR



^{13}C $\{^{19}\text{F}\}$ NMR



¹⁹F NMR

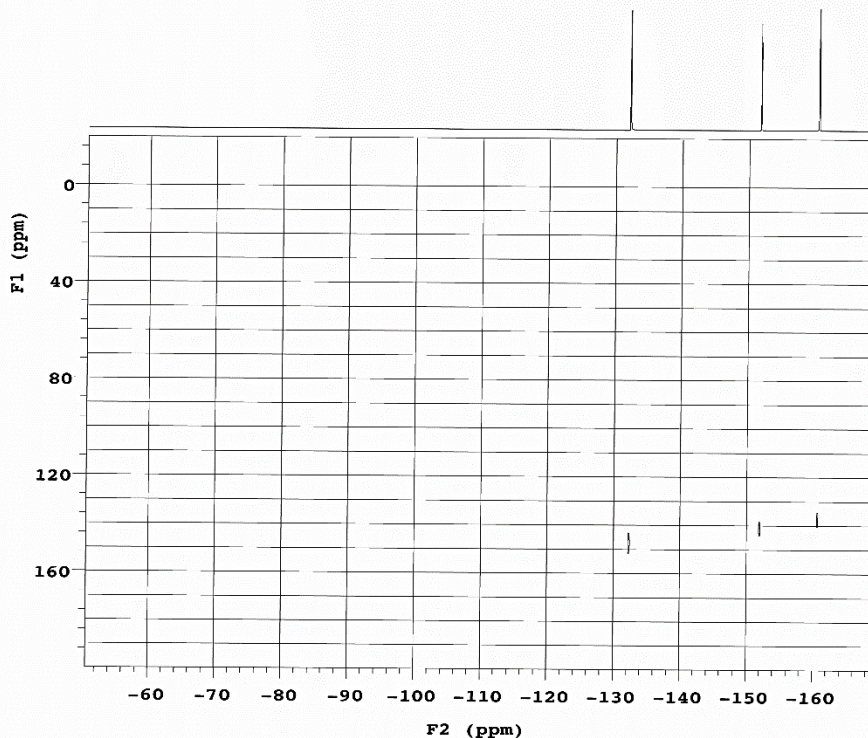
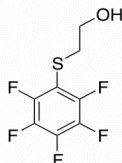


gHSQC

376.318 MHz F19 gc2hsqc in cdcl3, temp 25.9 C -> actual temp = 27.0 C, onenmr probe

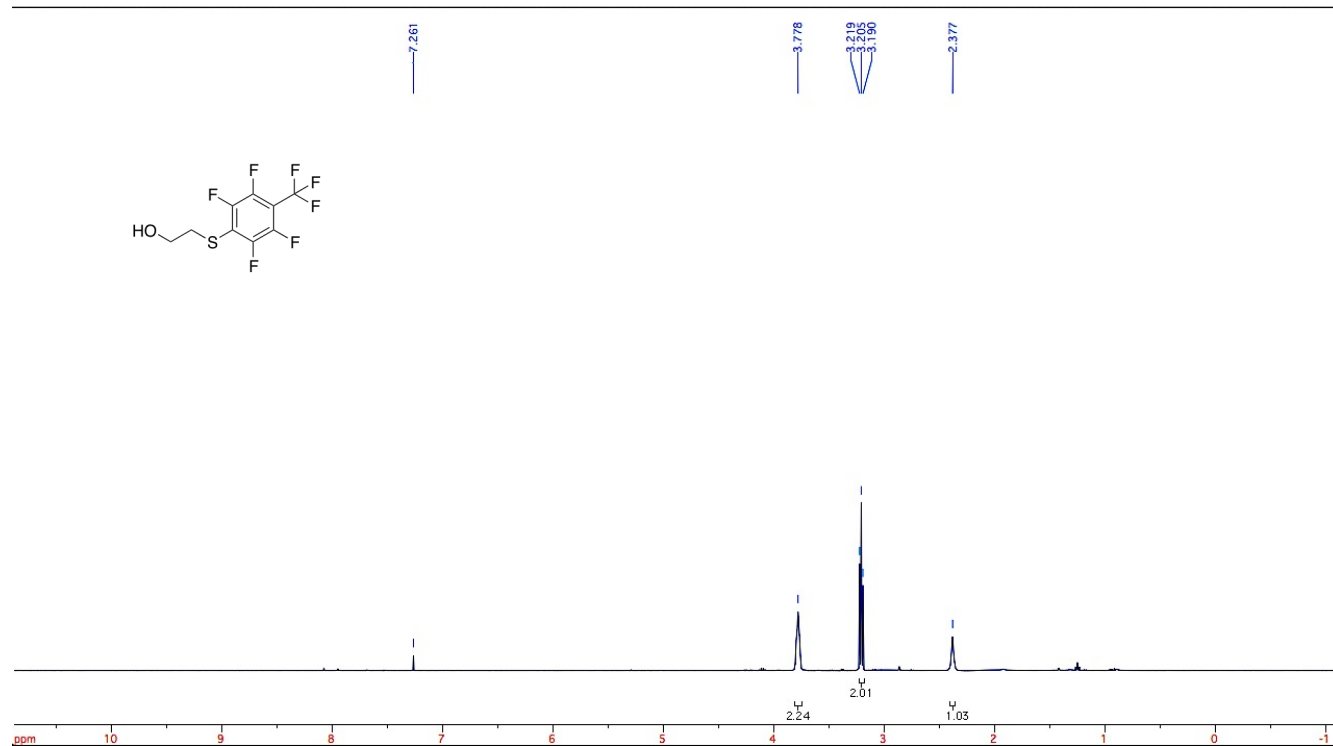
Temp. 25.9 C / 299.1 K
Operator: gennmr

Relax. delay 1.750 sec
Acq. time 0.250 sec
Width 44642.9 Hz
2D Width 22130.0 Hz
4 repetitions
2 x 85 increments
OBSERVE F19, 376.3596183 MHz
DECOUPLE C13, 100.5847195 MHz
Power 38 dB
on during acquisition
off during delay
W40_onenmr_200_C13 modulated
DATA PROCESSING
Sq. sine bell 0.042 sec
Shifted by -0.042 sec
F1 DATA PROCESSING
Sq. sine bell 0.002 sec
Shifted by -0.002 sec
FT size 8192 x 1024
Total time 23 min

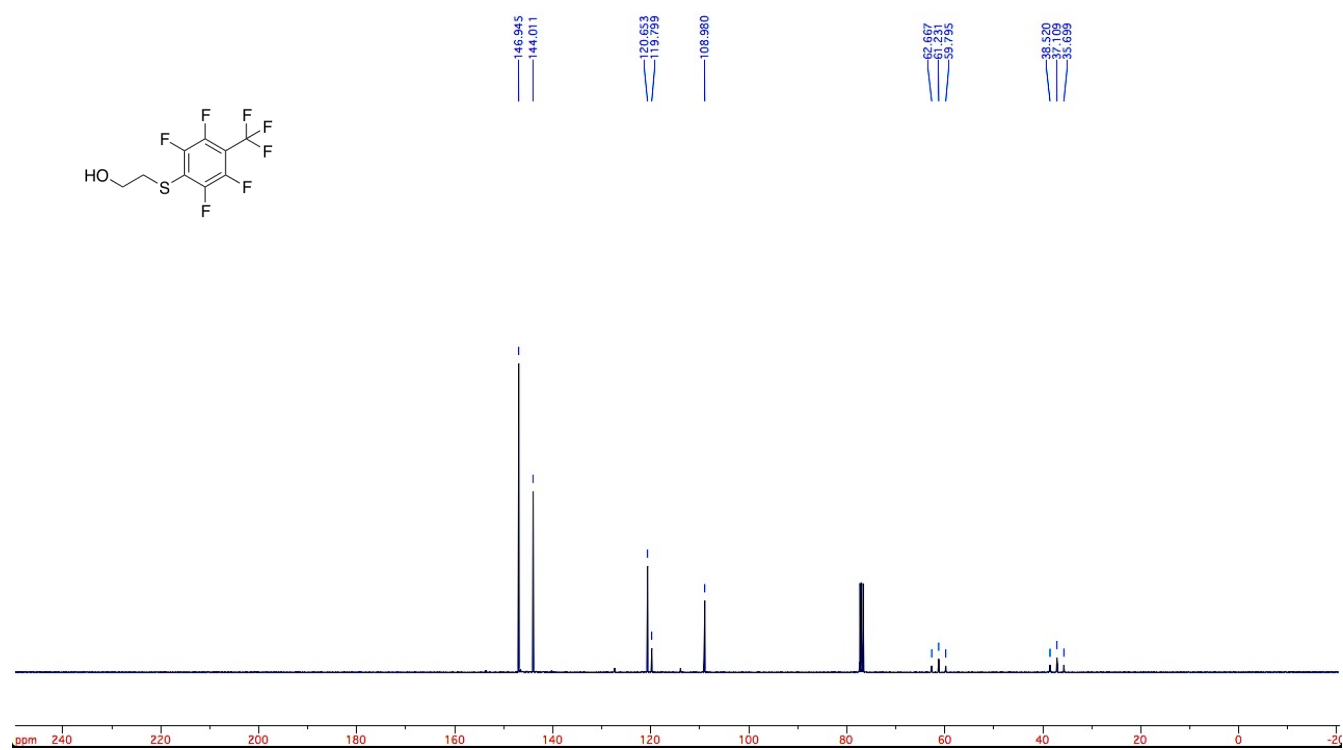


Pulse Sequence: gc2hsqc

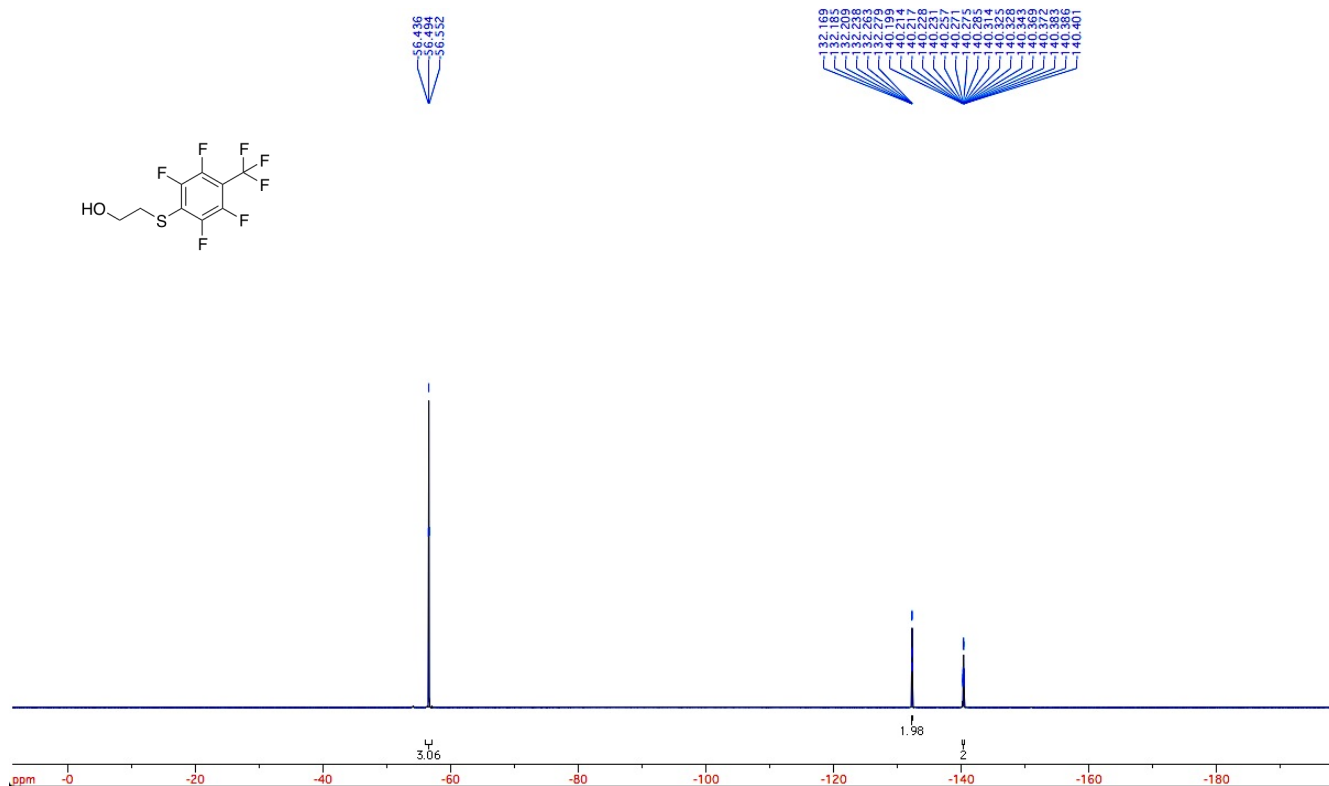
^1H NMR



^{13}C { ^{19}F } NMR

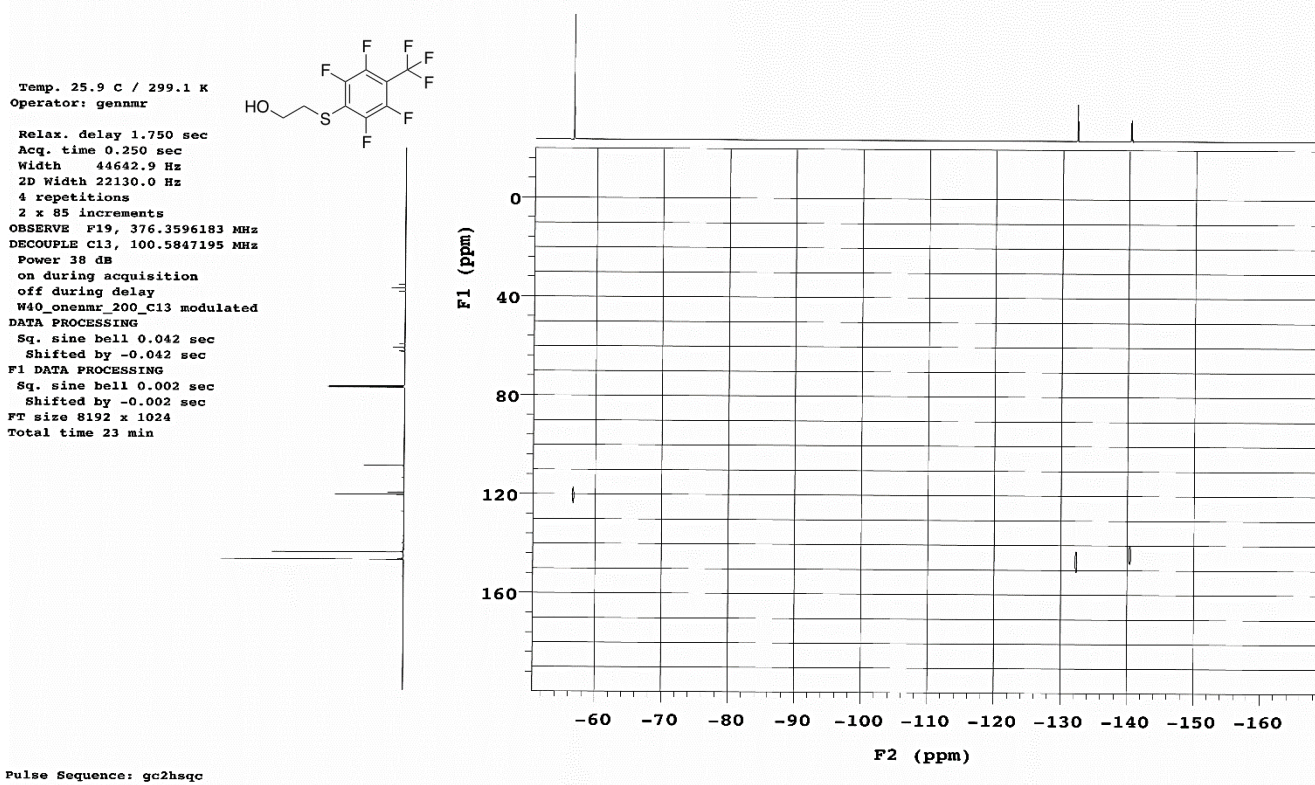


¹⁹F NMR

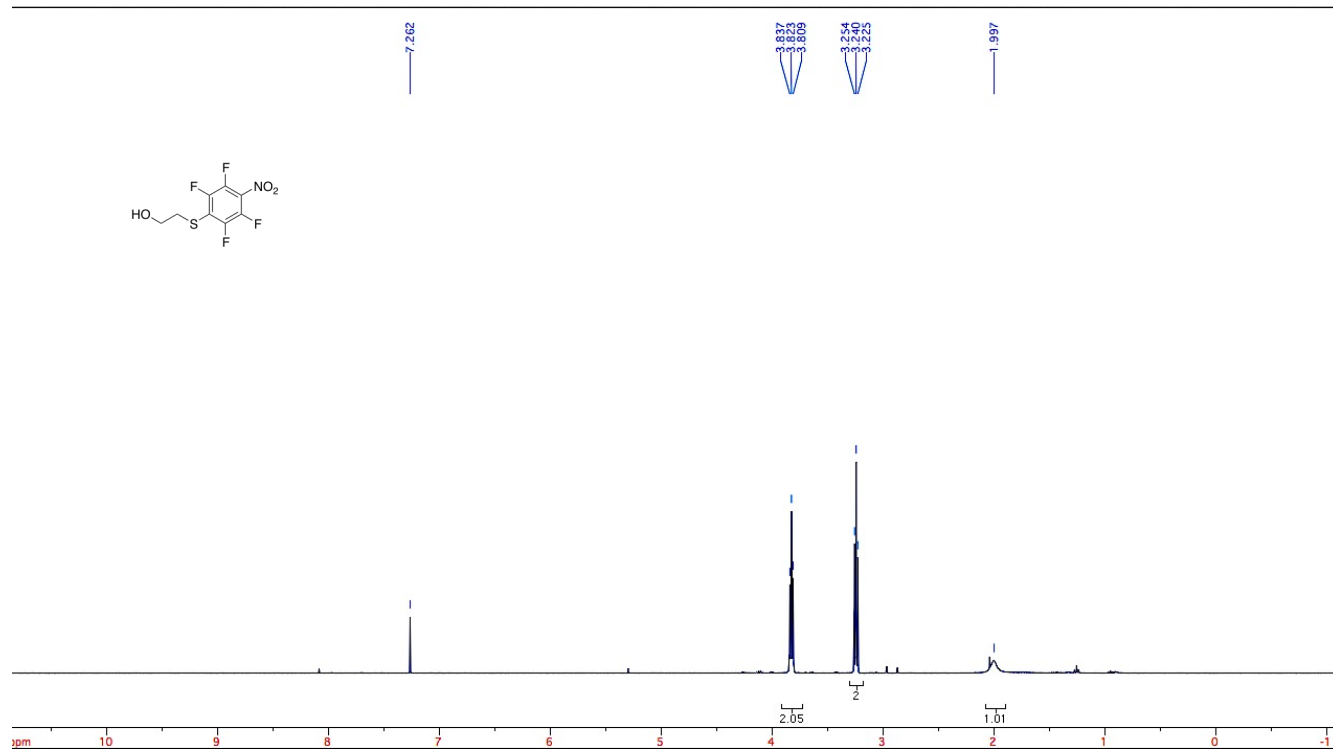


gHSQC

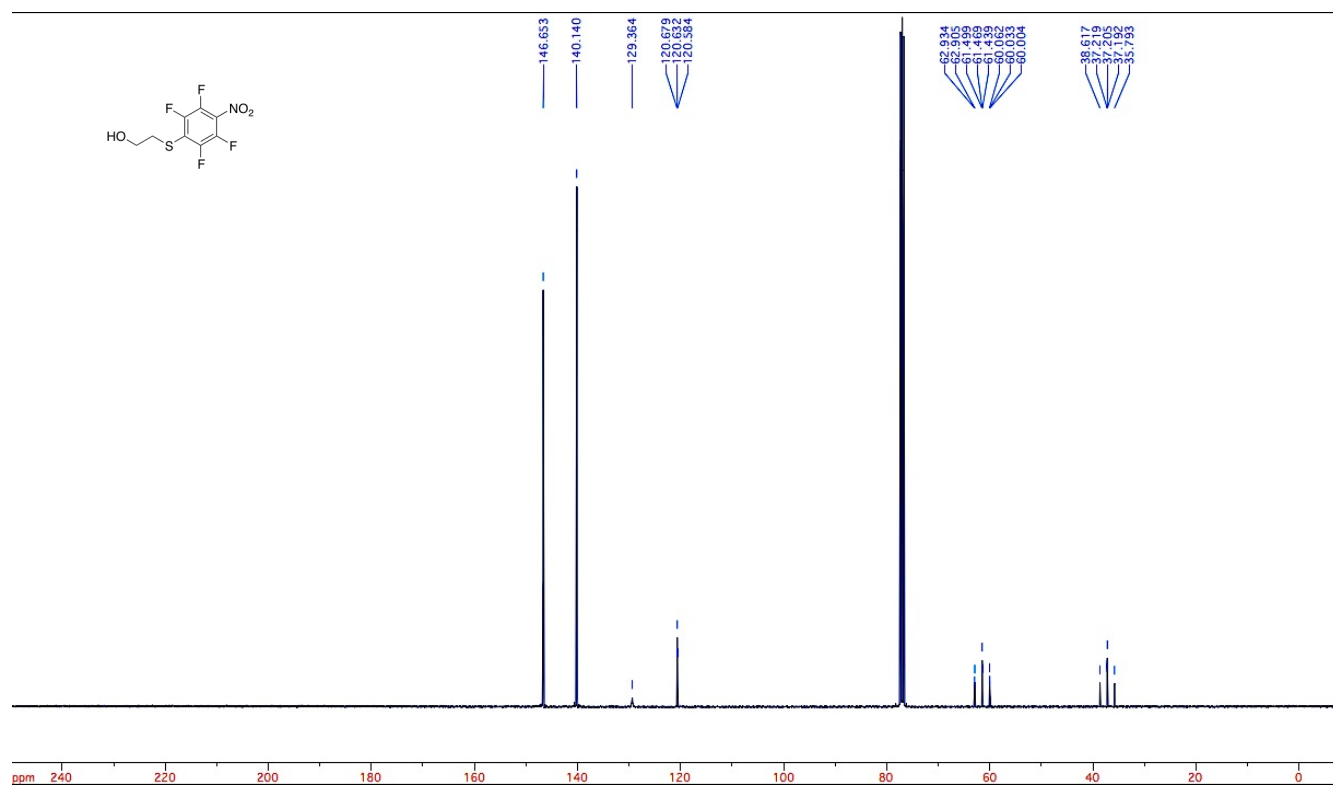
376.318 MHz F19 gc2hsqc in cdcl3, temp 25.9 C -> actual temp = 27.0 C, onenmr probe



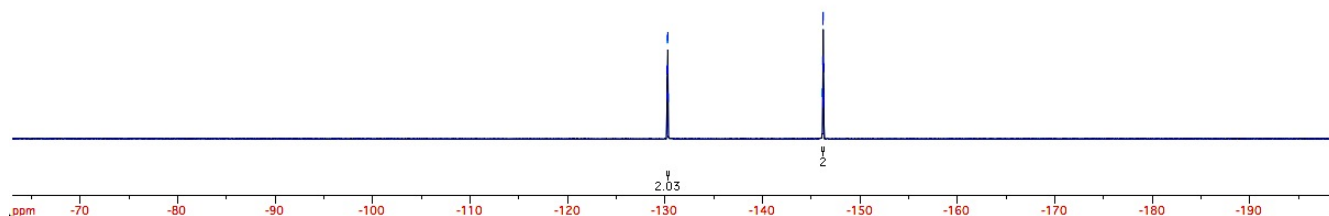
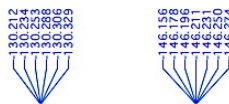
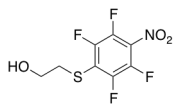
^1H NMR



^{13}C $\{^{19}\text{F}\}$ NMR

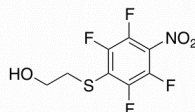


¹⁹F NMR

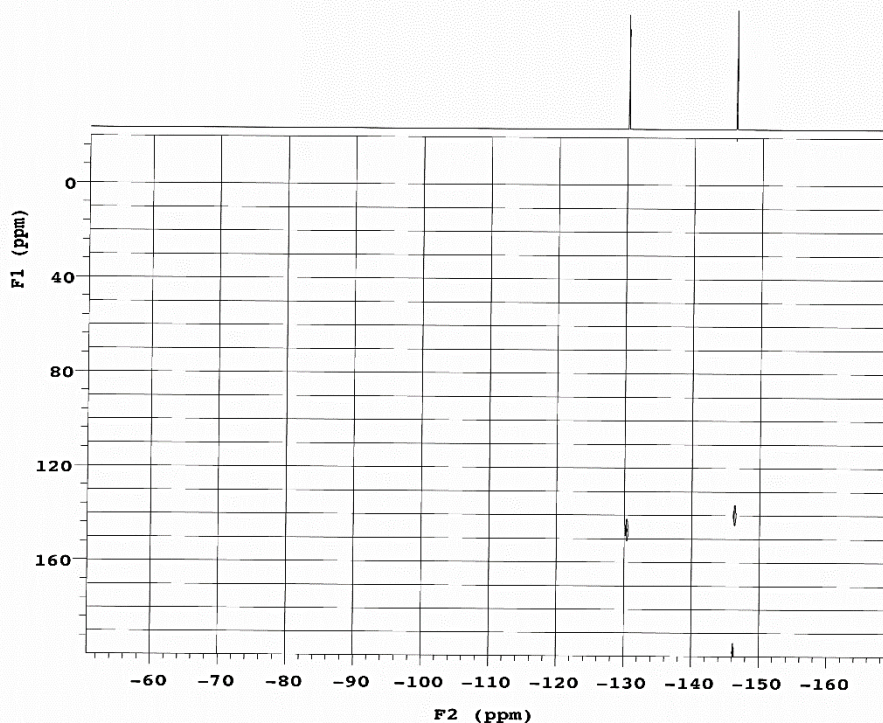


gHSQC

376.318 MHz F19 gc2hsqc in cdcl3, temp 25.9 C -> actual temp = 27.0 C, onenmr probe

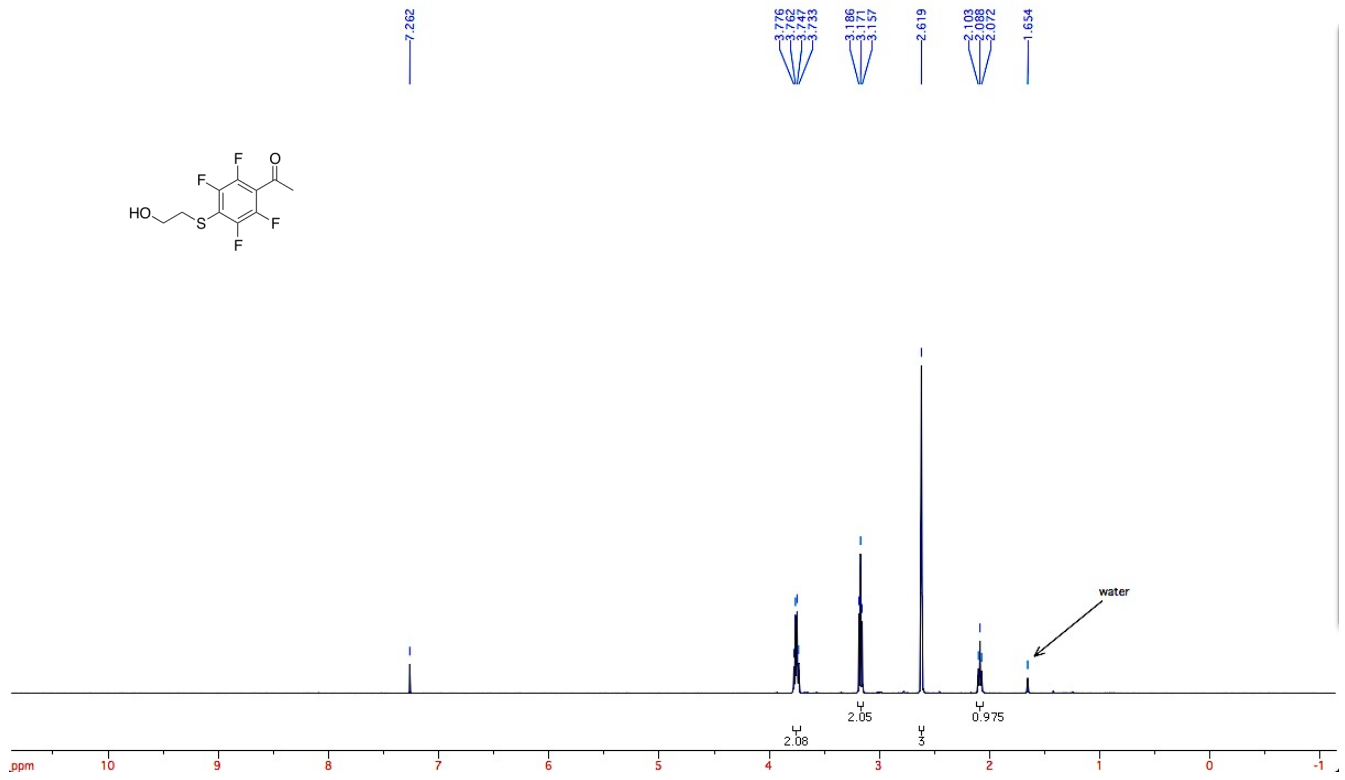


Temp. 25.9 C / 299.1 K
 Operator: gennar
 Relax. delay 1.750 sec
 Acq. time 0.250 sec
 Width 44642.9 Hz
 2D Width 22130.0 Hz
 4 repetitions
 2 x 85 increments
 OBSERVE F19, 376.3596183 MHz
 DECOUPLE C13, 100.5847195 MHz
 Power 38 dB
 on during acquisition
 off during delay
 W40_onenmr_200_C13 modulated
 DATA PROCESSING
 Sq. sine bell 0.042 sec
 Shifted by -0.042 sec
 F1 DATA PROCESSING
 Sq. sine bell 0.002 sec
 Shifted by -0.002 sec
 FT size 8192 x 1024
 Total time 23 min

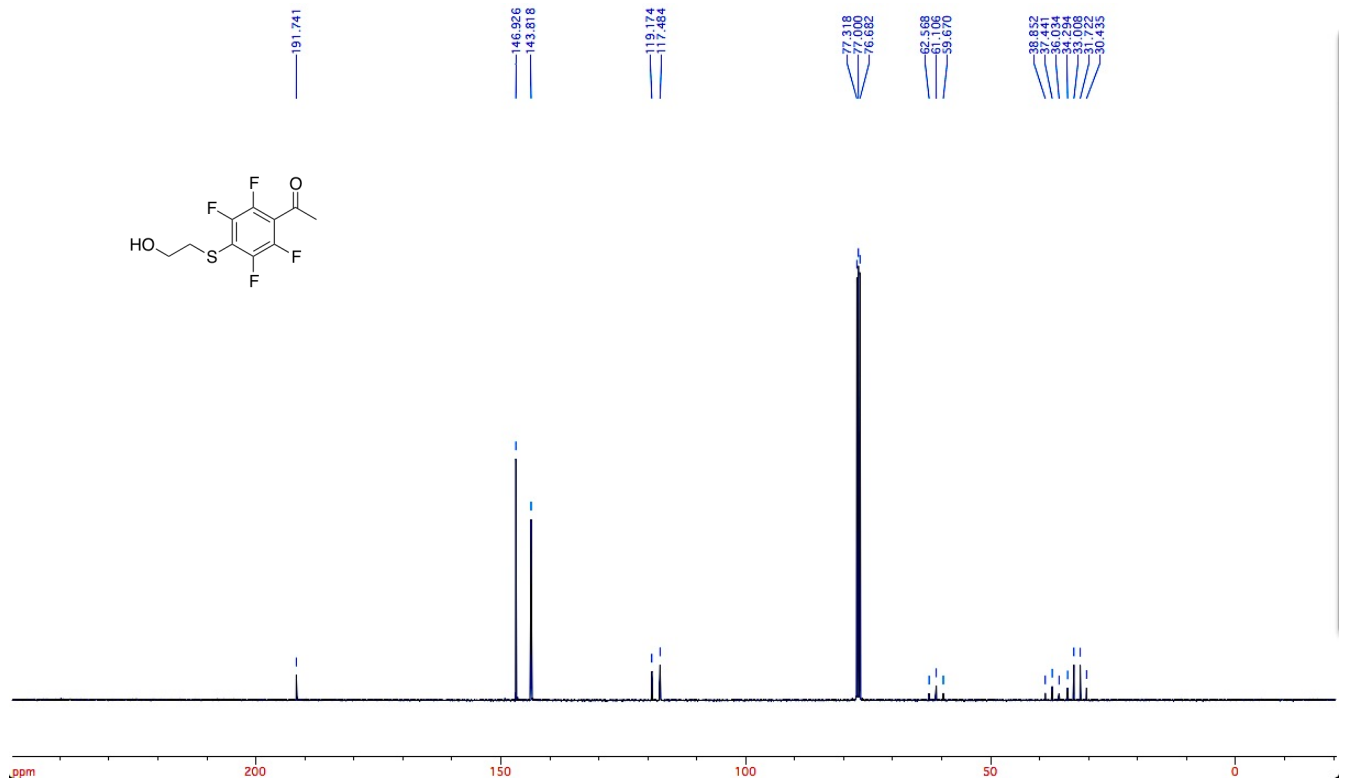


Pulse Sequence: gc2hsqc

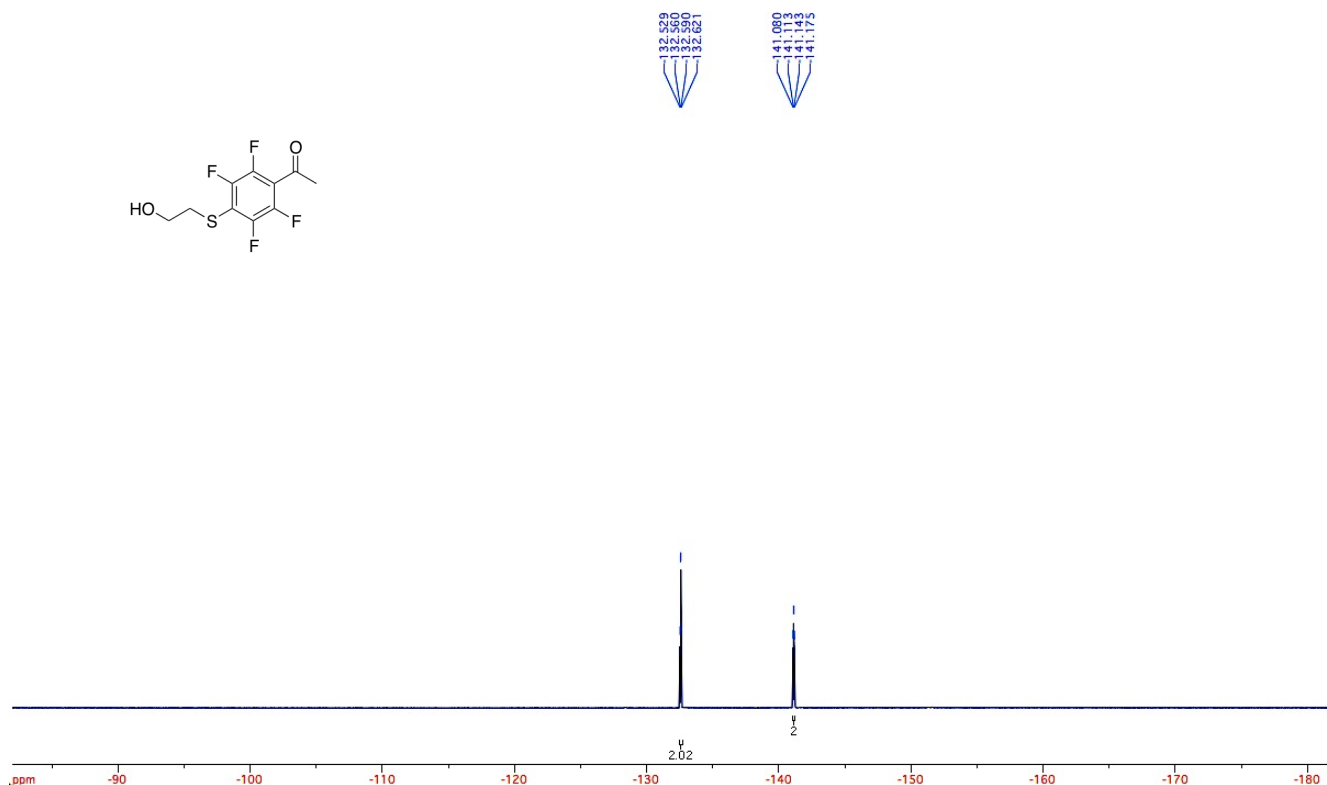
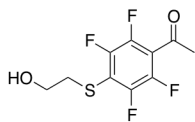
^1H NMR



^{13}C $\{^{19}\text{F}\}$ NMR



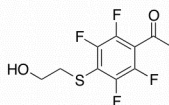
¹⁹F NMR



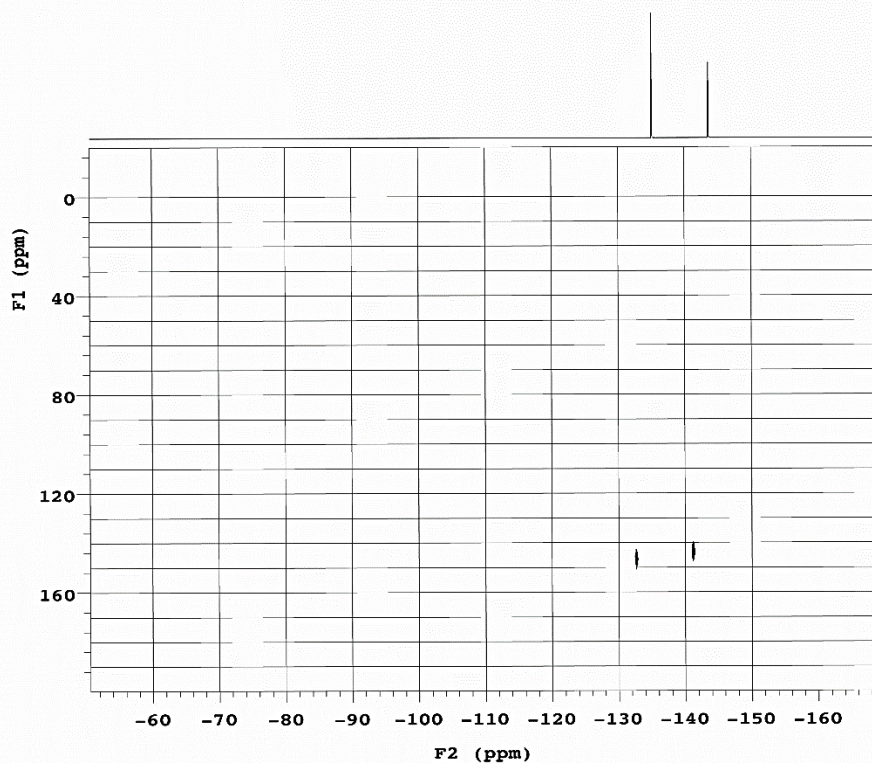
gHSQC

376.318 MHz F19 gc2hsqc in cdcl3, temp 25.9 C -> actual temp = 27.0 C, onenmr probe

Temp. 25.9 C / 299.1 K
Operator: genmr

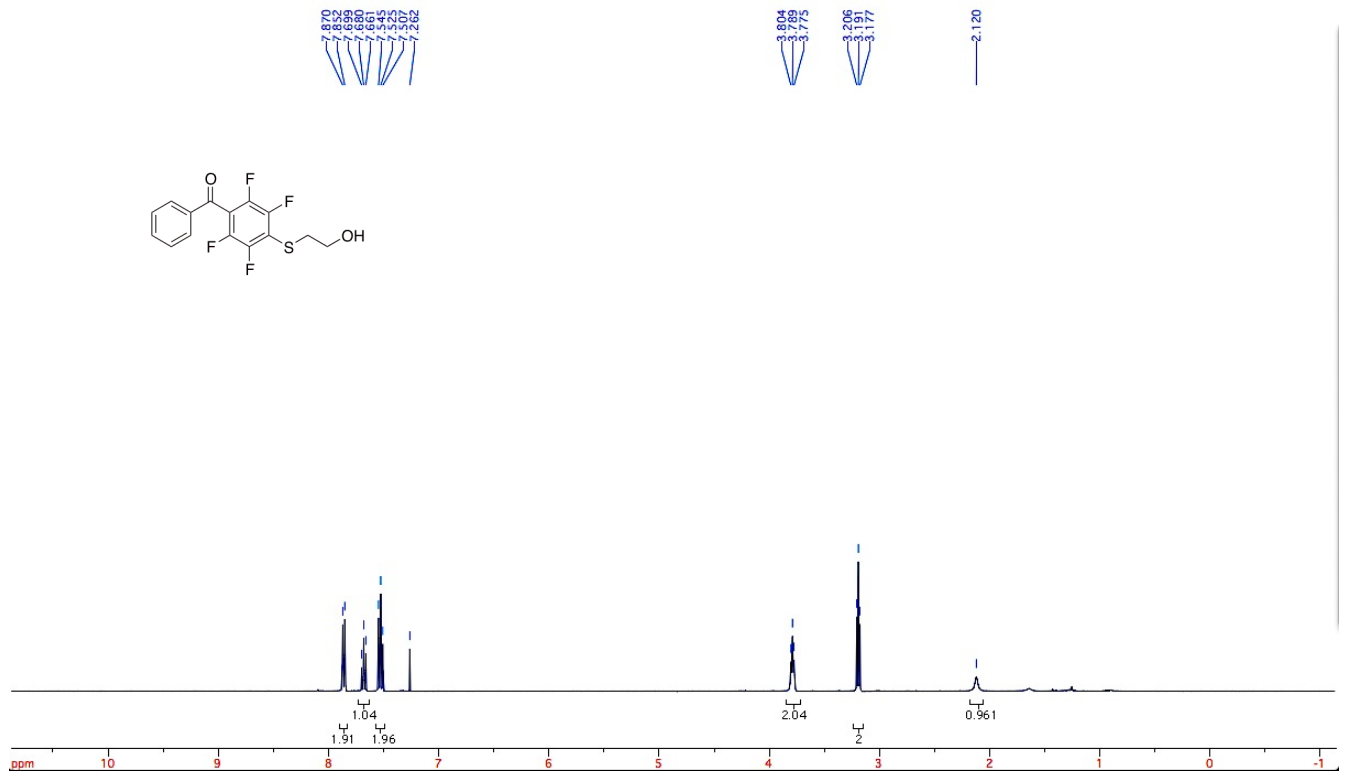


Relax. delay 1.750 sec
Acq. time 0.250 sec
Width 44642.9 Hz
2D Width 22130.0 Hz
4 repetitions
2 x 85 increments
OBSERVE F19, 376.3596183 MHz
DECOUPLE C13, 100.5847195 MHz
Power 38 dB
on during acquisition
off during delay
W40_onenmr_200_C13 modulated
DATA PROCESSING
Sq. sine bell 0.042 sec
Shifted by -0.042 sec
F1 DATA PROCESSING
Sq. sine bell 0.002 sec
Shifted by -0.002 sec
FT size 8192 x 1024
Total time 23 min

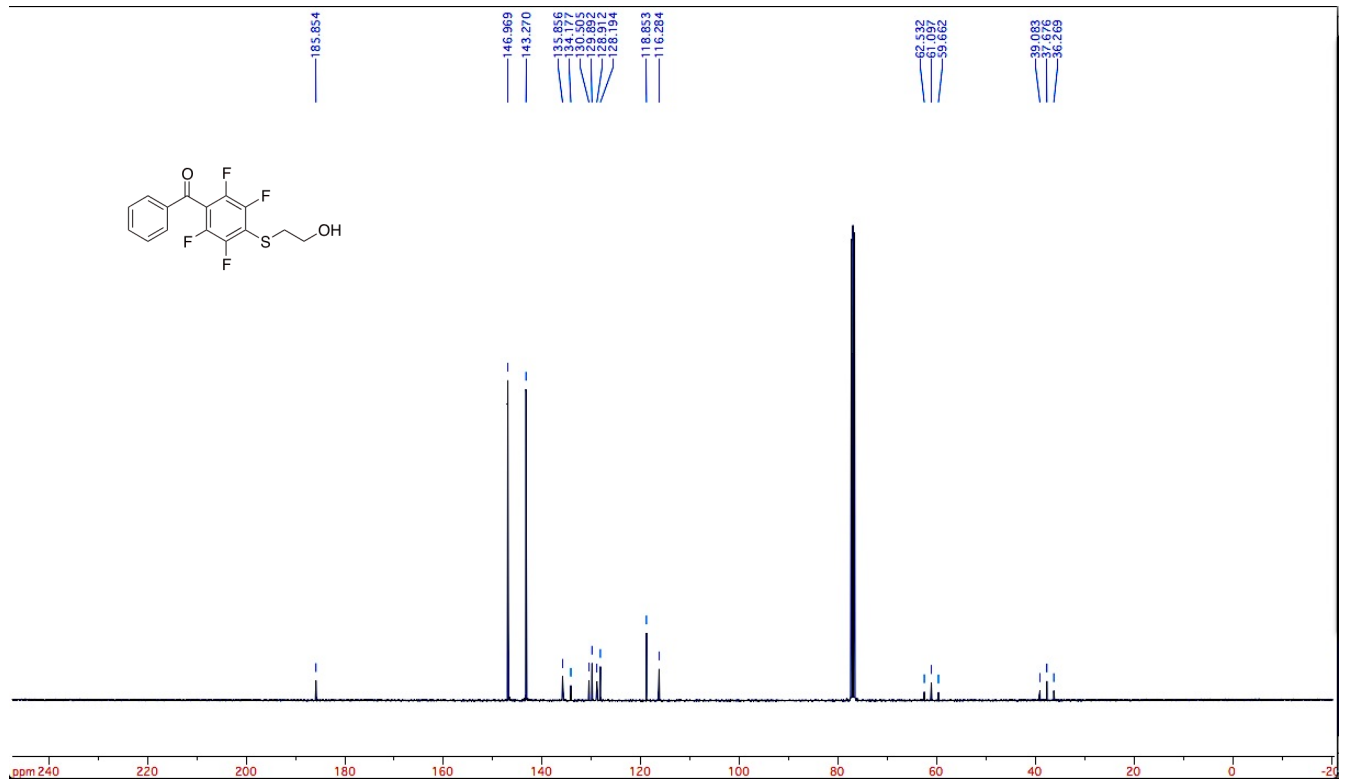


Pulse Sequence: gc2hsqc

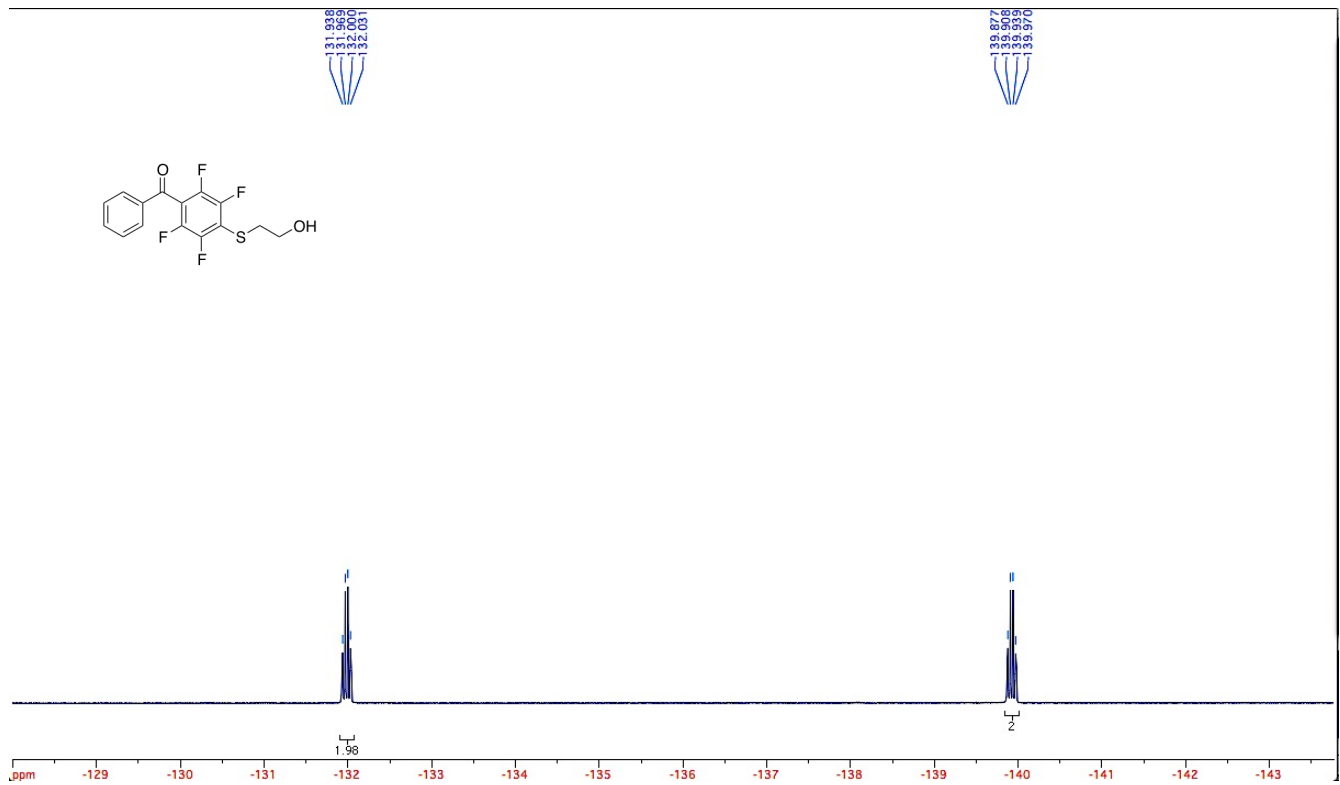
¹H NMR



¹³C {¹⁹F} NMR

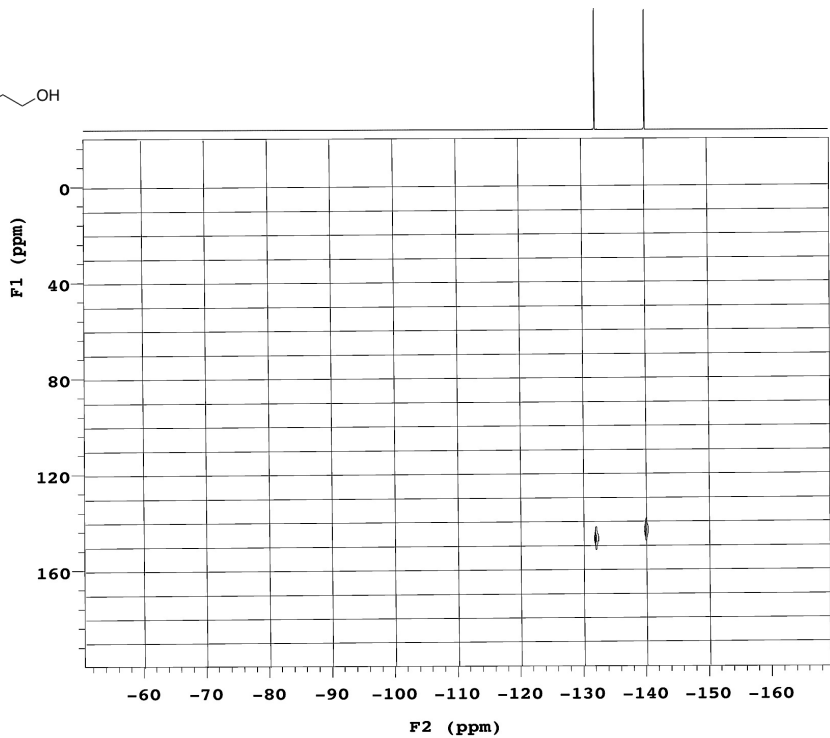
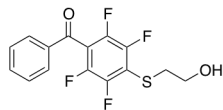


¹⁹F NMR



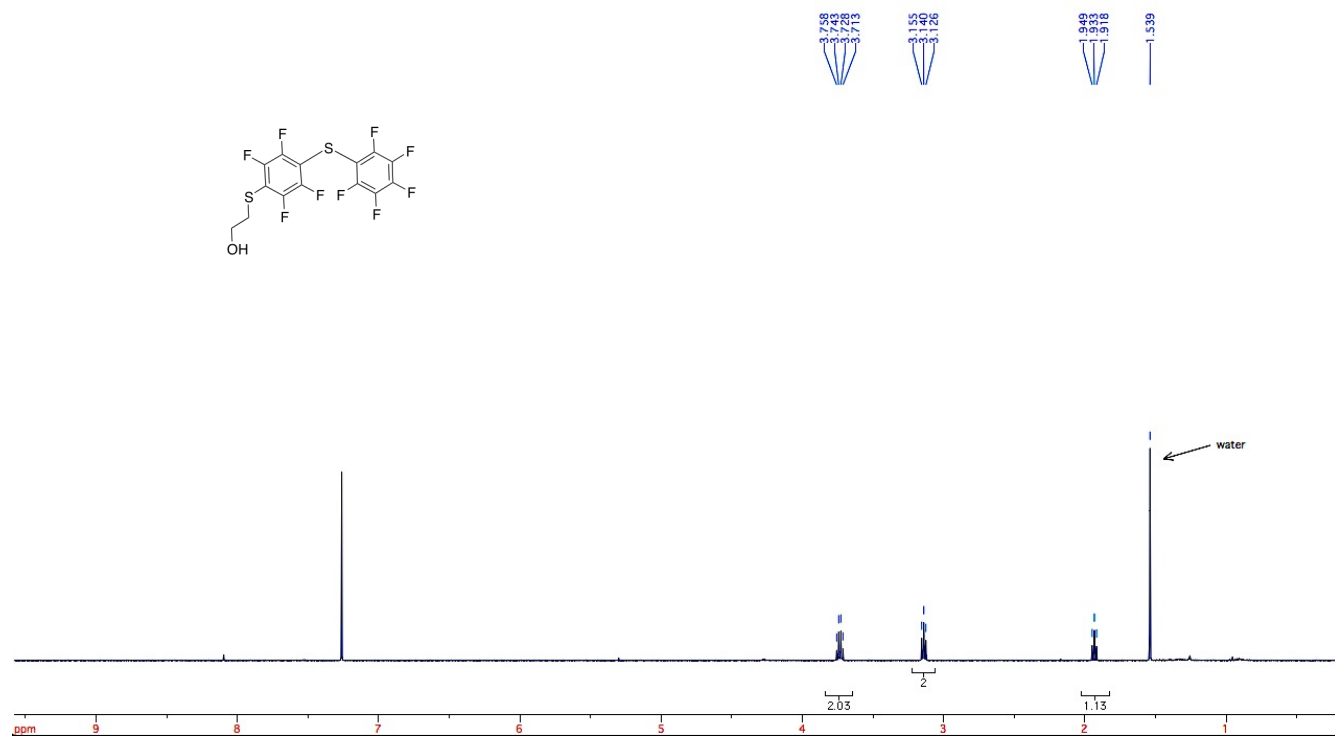
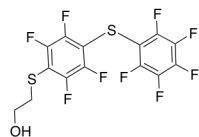
gHSQC

Temp. 25.9 C / 299.1 K
Operator: gennmr
Relax. delay 1.750 sec
Acq. time 0.250 sec
Width 44642.9 Hz
2D Width 22130.0 Hz
4 repetitions
2 x 85 increments
OBSERVE F19, 376.3596183 MHz
DECOUPLE C13, 100.5847195 MHz
Power 38 dB
on during acquisition
off during delay
W40_onenmr_200_C13 modulated
DATA PROCESSING
Sq. sine bell 0.042 sec
Shifted by -0.042 sec
F1 DATA PROCESSING
Sq. sine bell 0.002 sec
Shifted by -0.002 sec
FT size 8192 x 1024
Total time 23 min

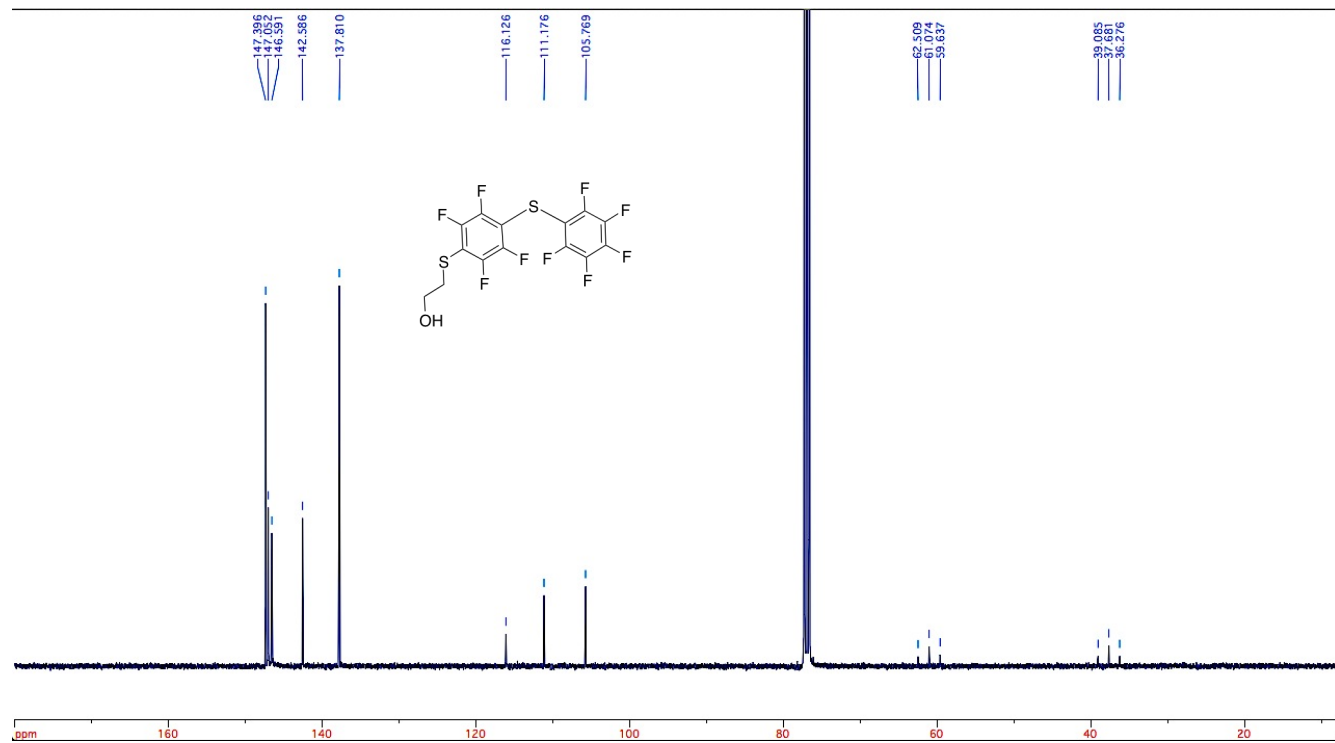
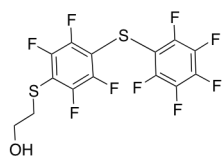


Pulse Sequence: gc2hsqc

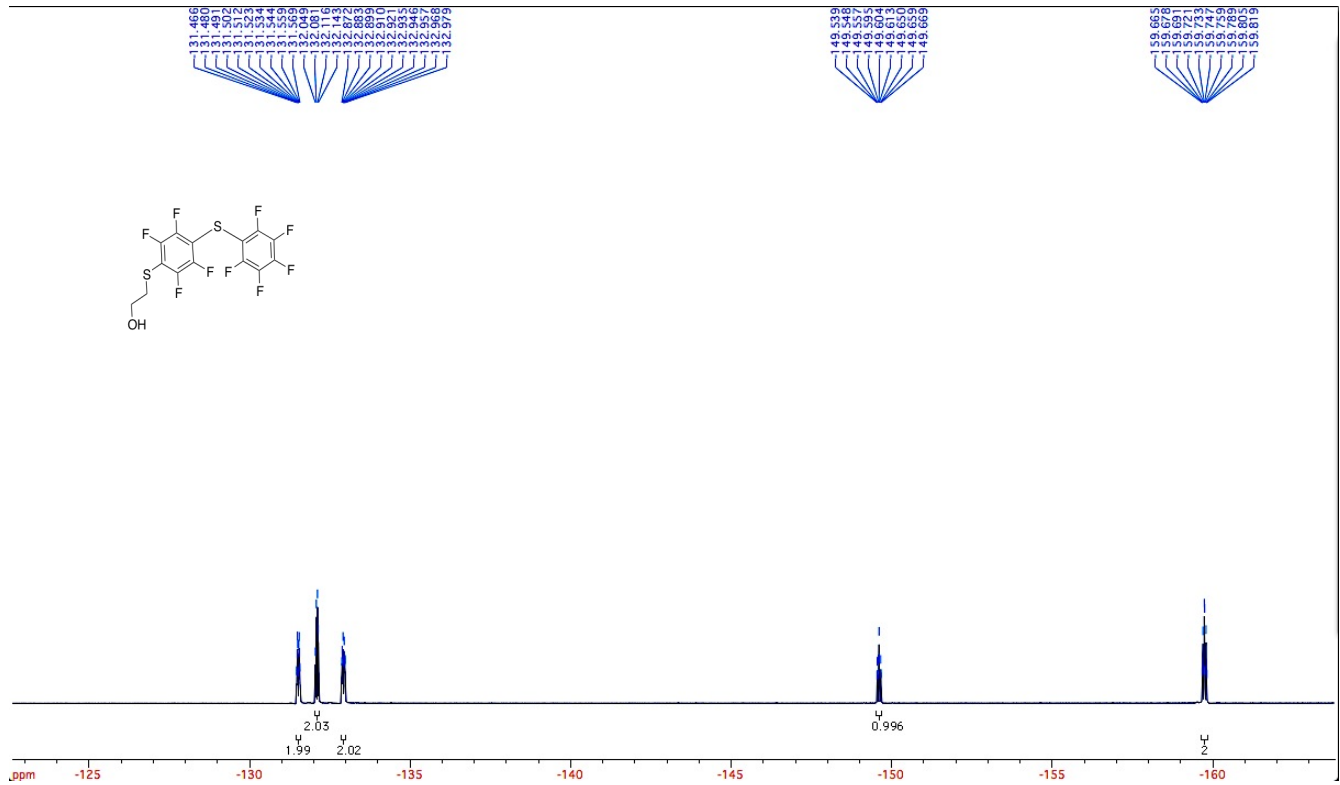
^1H NMR



^{13}C $\{^{19}\text{F}\}$ NMR

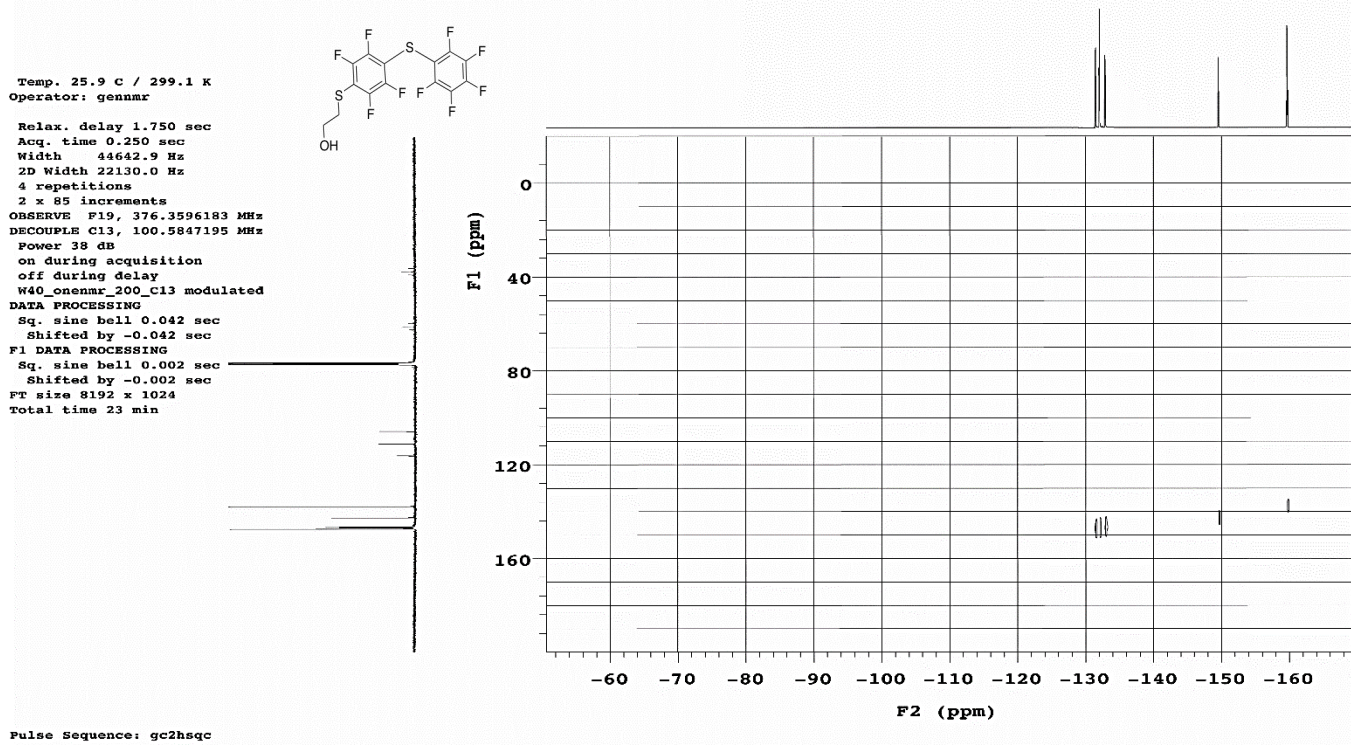


¹⁹F NMR

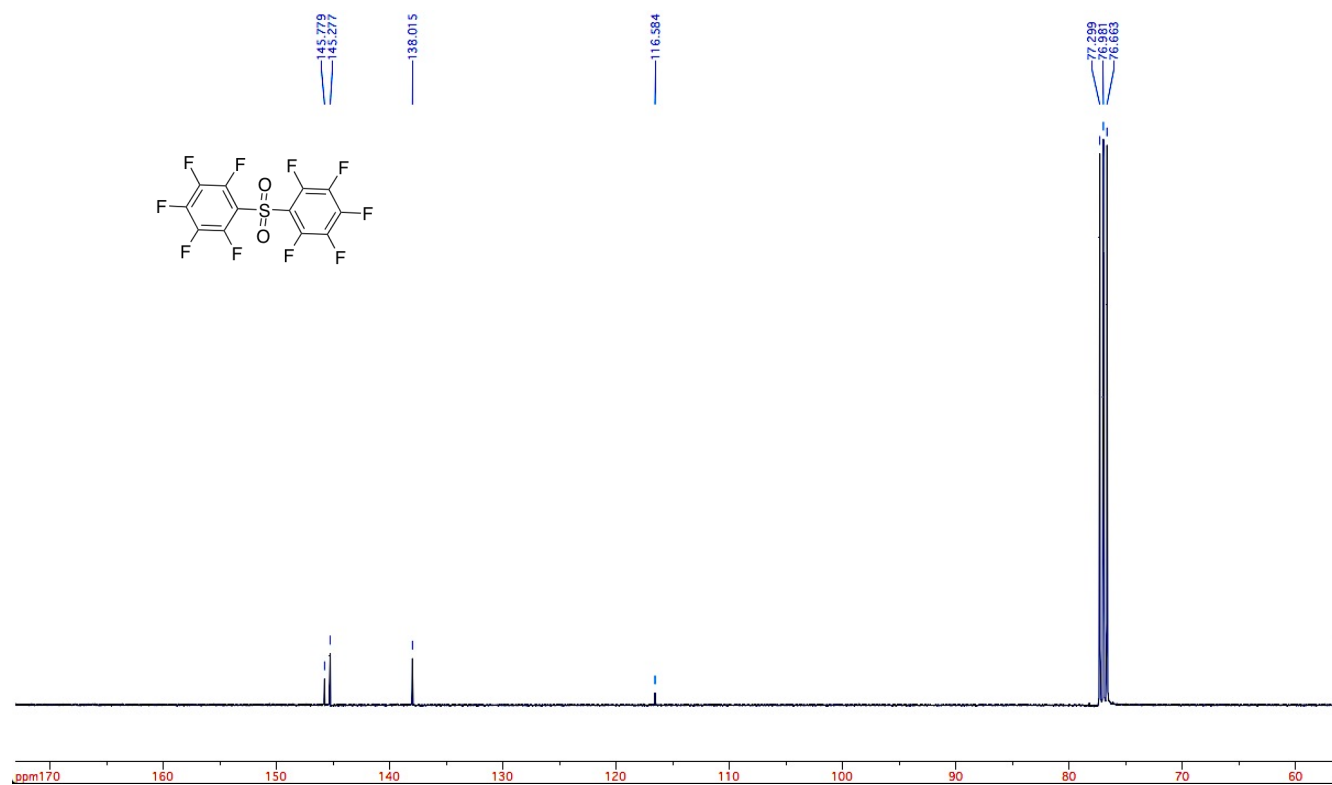


gHSQC

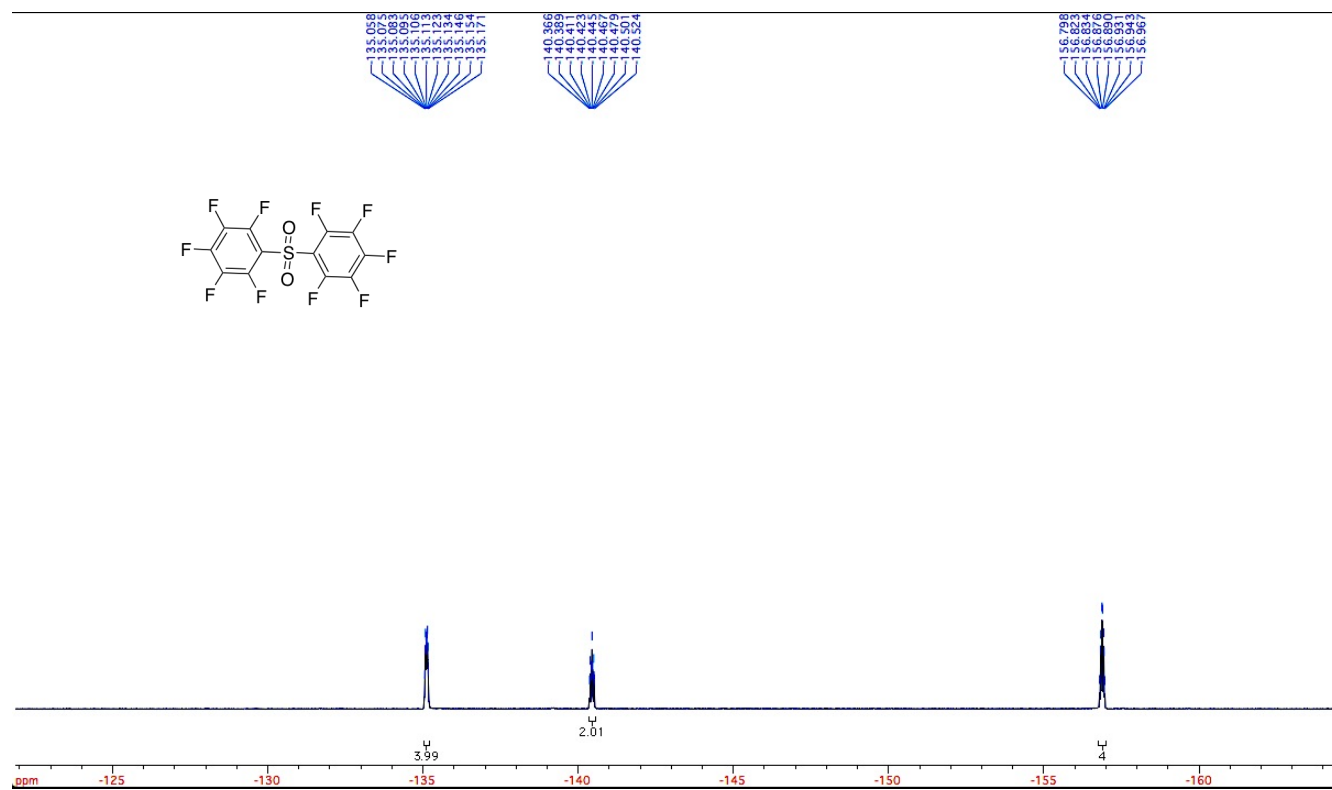
376.318 MHz F19 gc2hsqc in cdcl3, temp 25.9 C -> actual temp = 27.0 C, onenmr probe



$^{13}\text{C} \{^{19}\text{F}\}$ NMR



^{19}F NMR

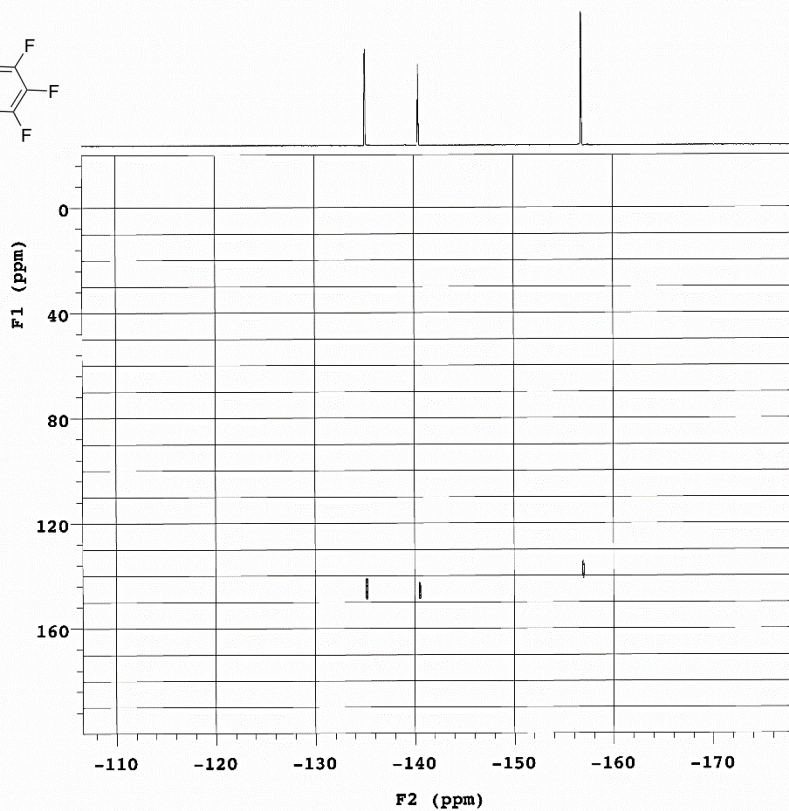
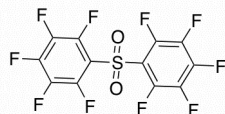


gHSQC

376.318 MHz F19 gc2hsqc in cdc13, temp 25.9 C -> actual temp = 27.0 C, onenmr probe

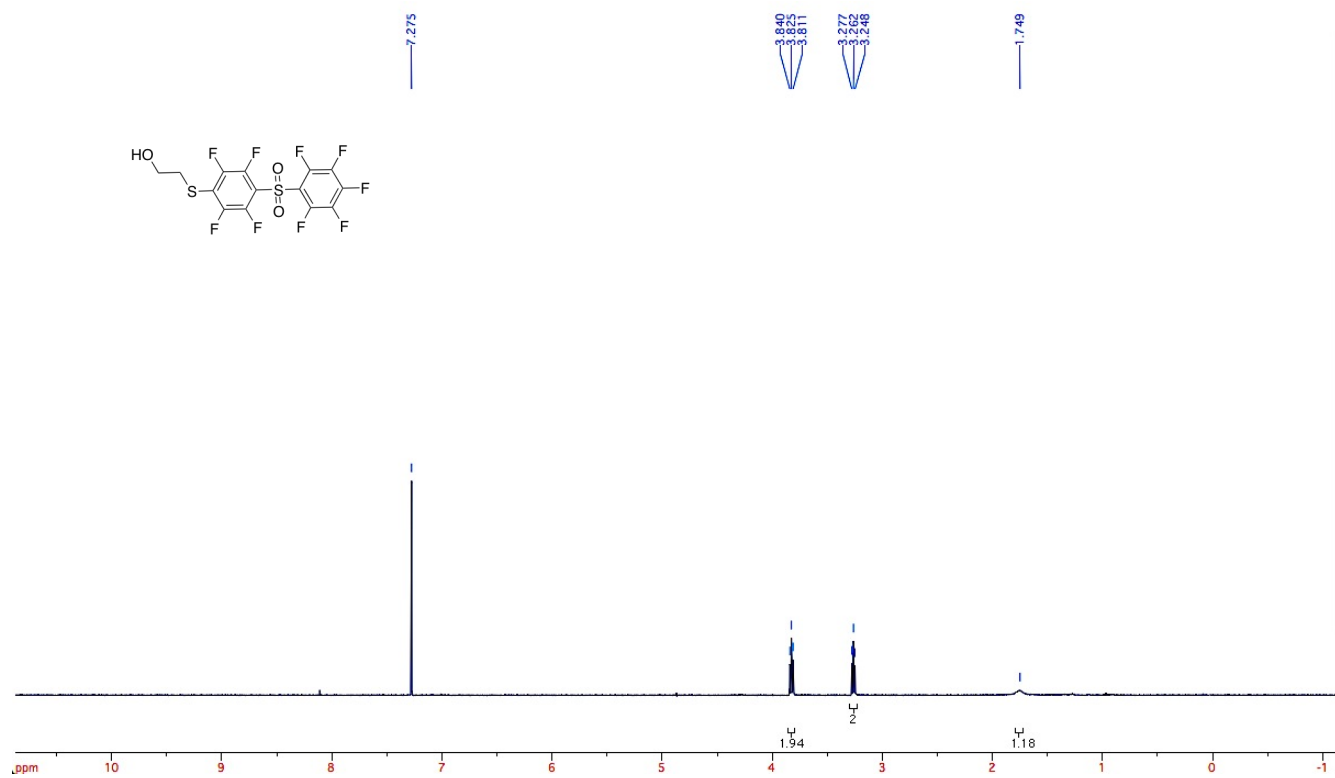
Temp. 25.9 C / 299.1 K
Operator: genmr

Relax. delay 1.750 sec
Acq. time 0.250 sec
Width 48076.9 Hz
2D Width 22130.0 Hz
4 repetitions
2 x 85 increments
OBSERVE F19, 376.3596183 MHz
DECOUPLE C13, 100.5847195 MHz
Power 38 dB
on during acquisition
off during delay
W40_onenmr_200_C13 modulated
DATA PROCESSING
Sq. sine bell 0.042 sec
Shifted by -0.042 sec
F1 DATA PROCESSING
Sq. sine bell 0.002 sec
Shifted by -0.002 sec
FT size 8192 x 1024
Total time 23 min

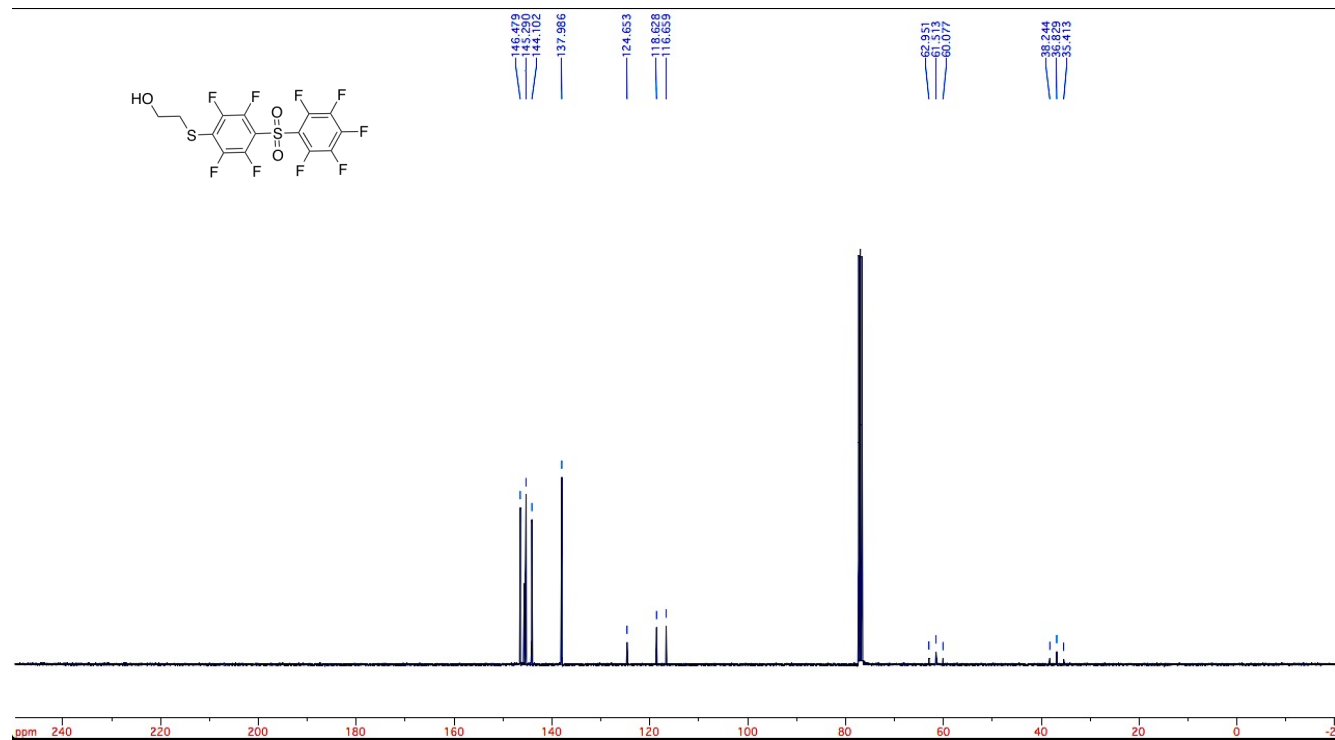


Pulse Sequence: gc2hsqc

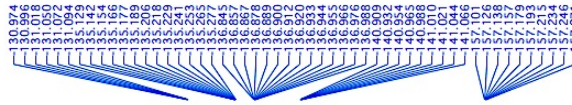
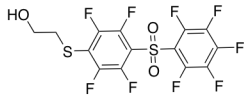
^1H NMR



$^{13}\text{C}\{^{19}\text{F}\}$ NMR

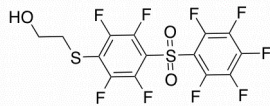


¹⁹F NMR



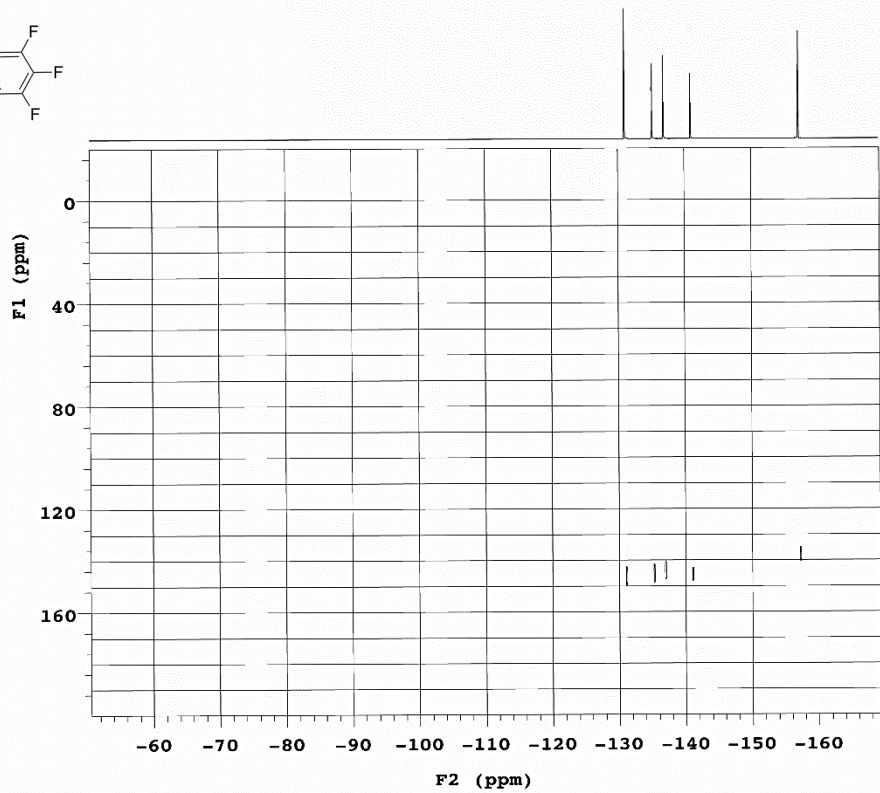
gHSQC

376.318 MHz F19 gc2hsqc in cdcl3, temp 25.9 C -> actual temp = 27.0 C, onenmr probe



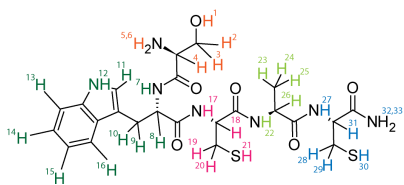
Temp. 25.9 c / 299.1 K
Operator: gennmr

Relax. delay 1.750 sec
Acq. time 0.250 sec
Width 44642.9 Hz
2D Width 22130.0 Hz
4 repetitions
2 x 85 increments
OBSERVE F19, 376.3596183 MHz
DECOUPLE C13, 100.5847195 MHz
Power 38 dB
on during acquisition
off during delay
W40_onenmr_200_C13 modulated
DATA PROCESSING
Sq. sine bell 0.042 sec
Shifted by -0.042 sec
F1 DATA PROCESSING
Sq. sine bell 0.002 sec
Shifted by -0.002 sec
FT size 8192 x 1024
Total time 23 min



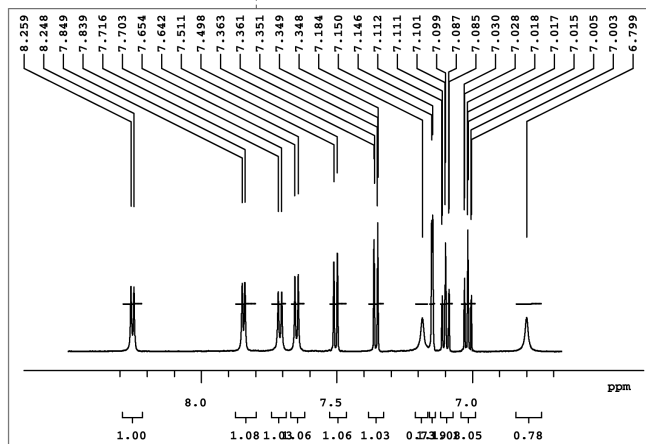
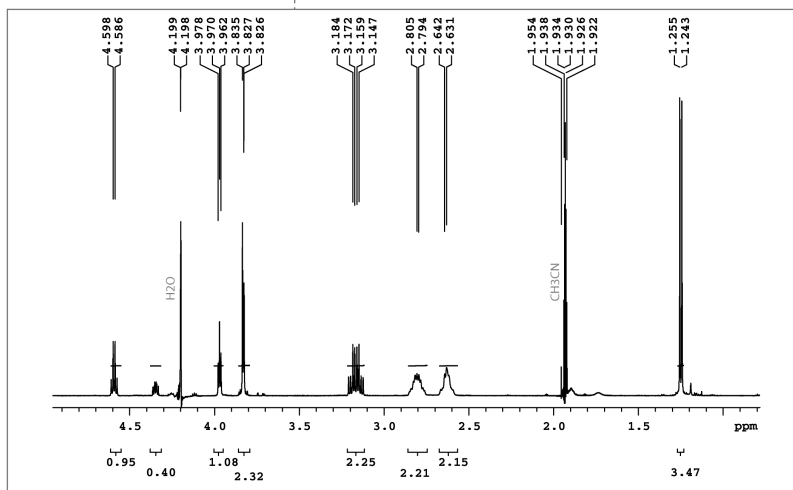
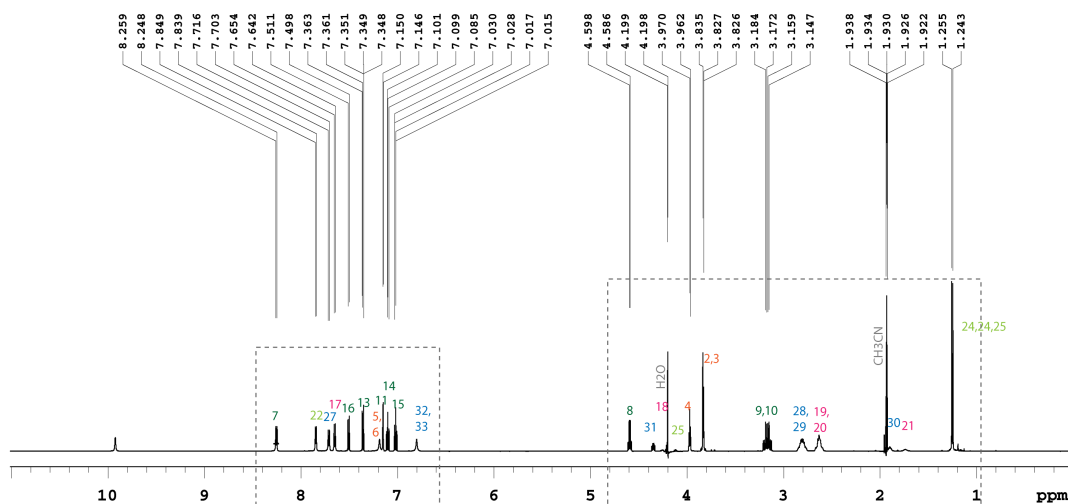
Pulse Sequence: gc2hsqc

¹H NMR of peptide SWCAC

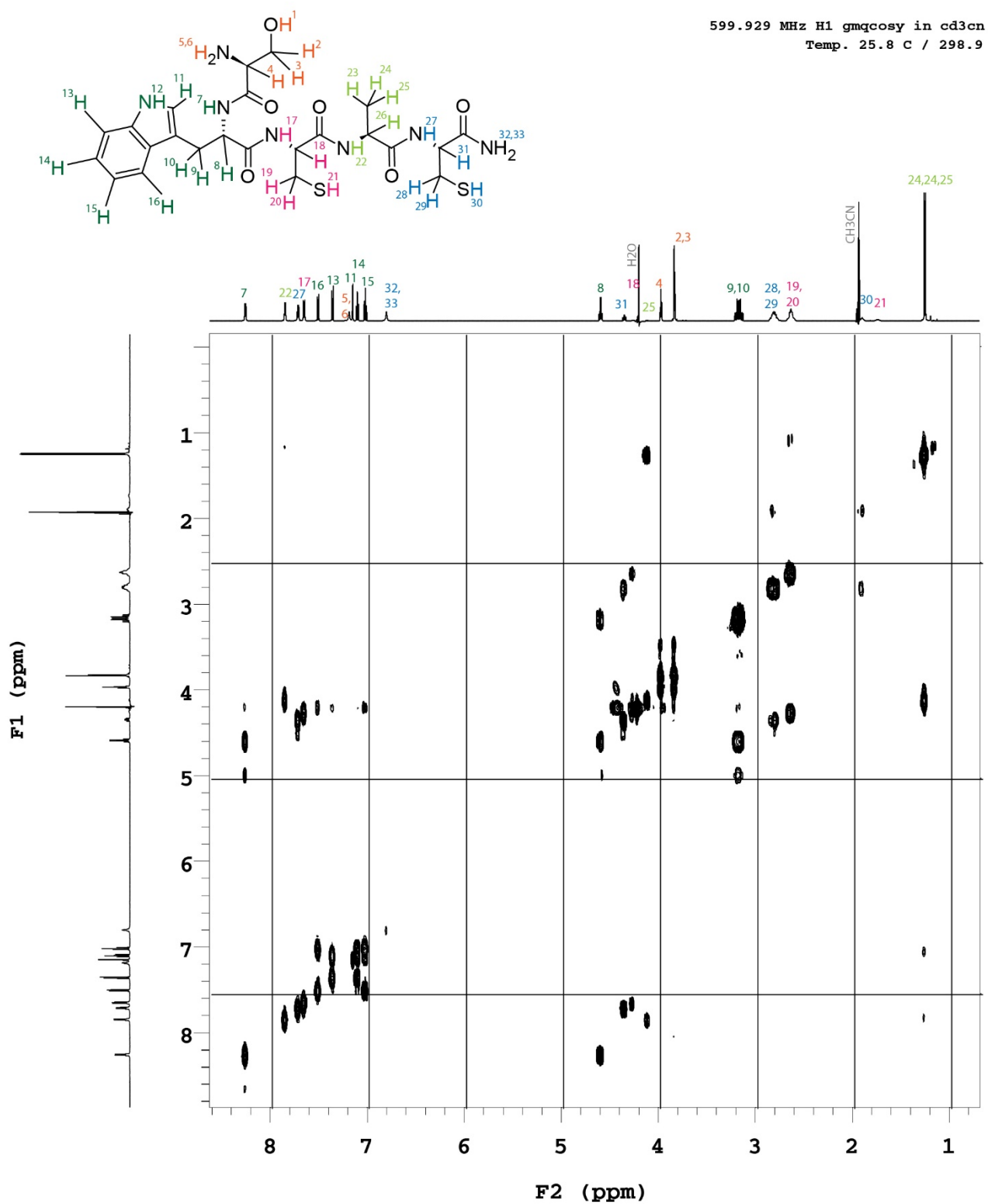


599.929 MHz H1 water_ES in cd3cn, temp 25.8 C
 -> actual temp = 27.0 C, autoxid probe

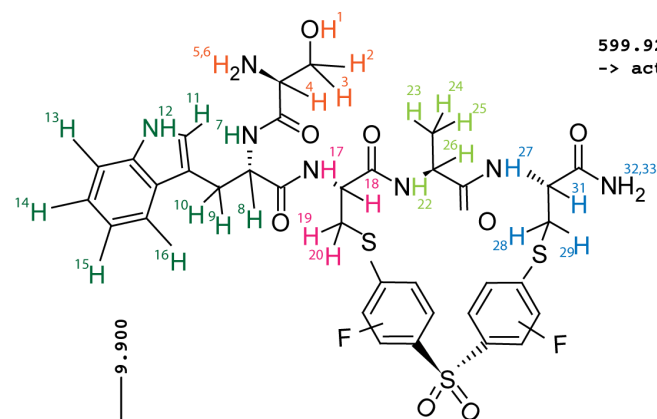
Note:
 Solvent: H₂O (0.1% TFA)/CDCN: 1:1
 Suppression of water peak was achieved by pre-saturation
 or watergate sequence was used



gmCOSY of peptide SWCAC

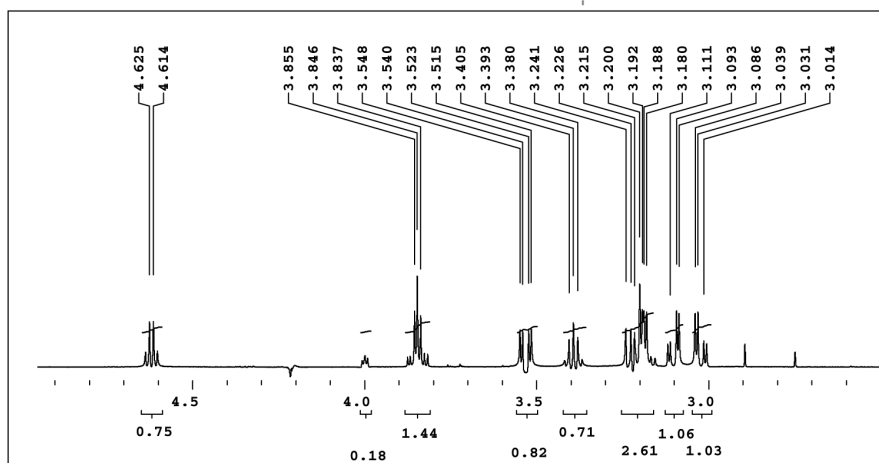
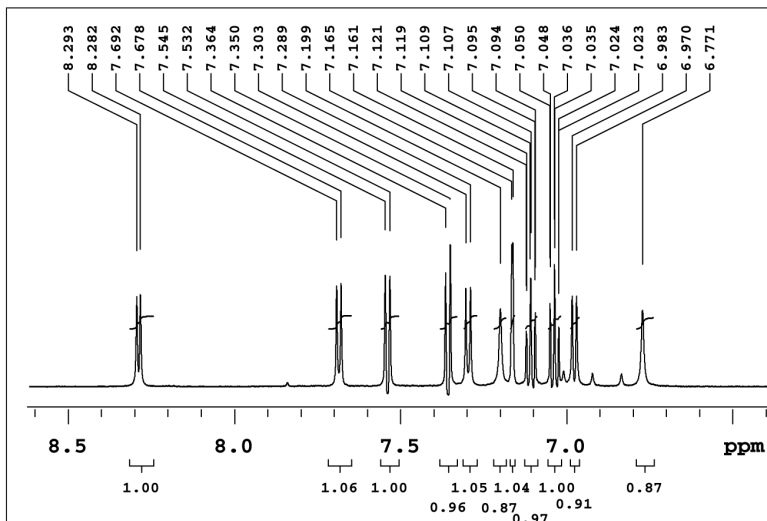
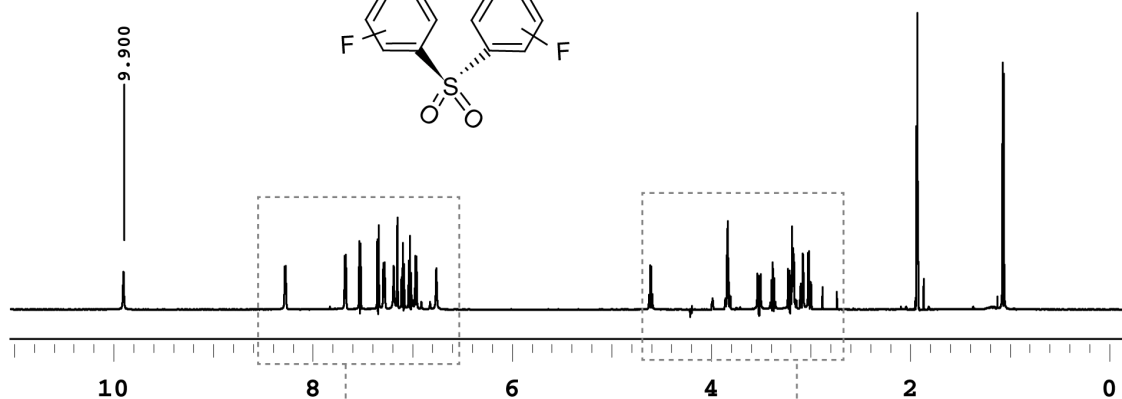


¹H NMR of peptide SWCAC-DFS

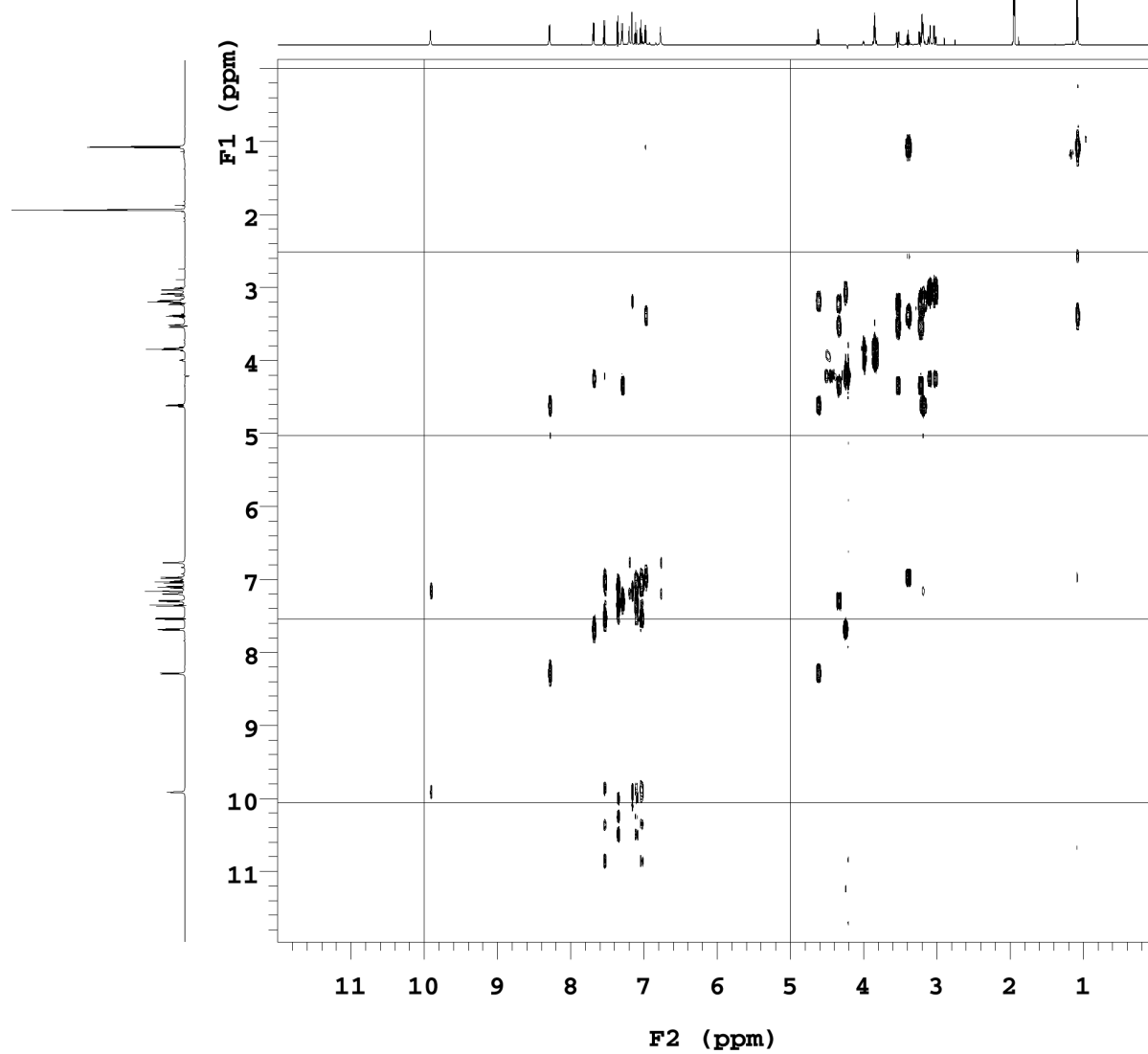
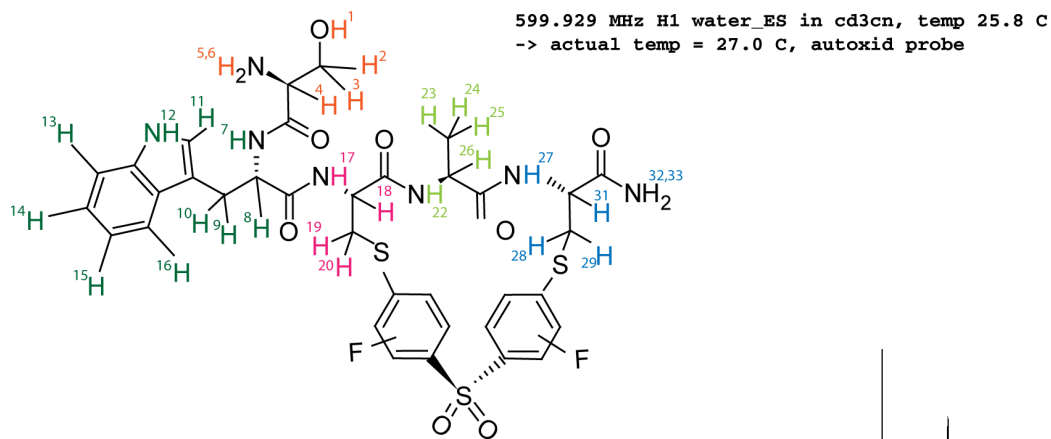


599.929 MHz H1 water_ES in cd3cn, temp 25.8 C
 -> actual temp = 27.0 C, autoxid probe

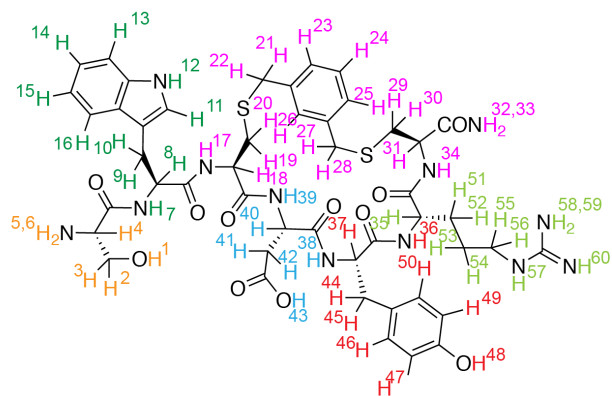
Note:
 Solvent: H₂O (0.1% TFA)/CD₃CN: 1:1
 Suppression of water peak was achieved by pre-saturation or water-gate sequence was used



gmCOSY of peptide SWCAC-DFS



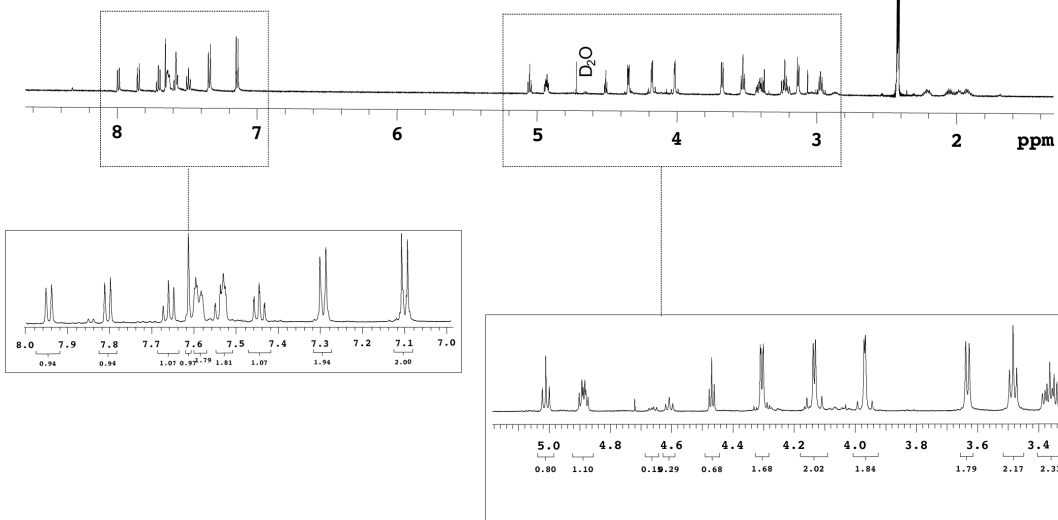
¹H NMR of peptide SWCDYRC-Xylene



2.423
Acetonitrile-d₃

599.929 MHz H1 water_ES in cd3cn, temp 25.8 C
-> actual temp = 27.0 C, autoxid probe

Note:
Solvent: H₂O (0.1% TFA)/CD₃CN 1:1
Suppression of water peak was achieved by
pre-saturation or watergate sequence was
used.



gmCOSY of peptide SWCDYRC-Xylene

599.929 MHz H1 gmcosy in 1:1 d₂o: cd₃n
Temp. 25.8 C/ 298.9

