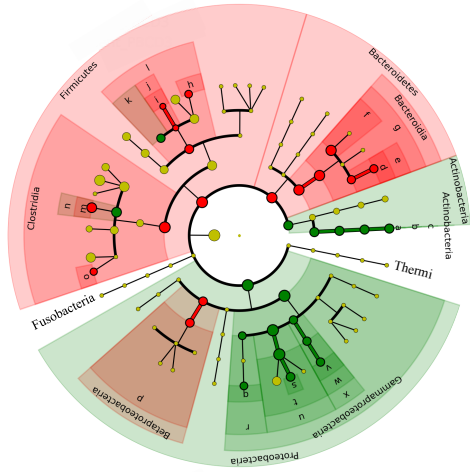


### PTD3

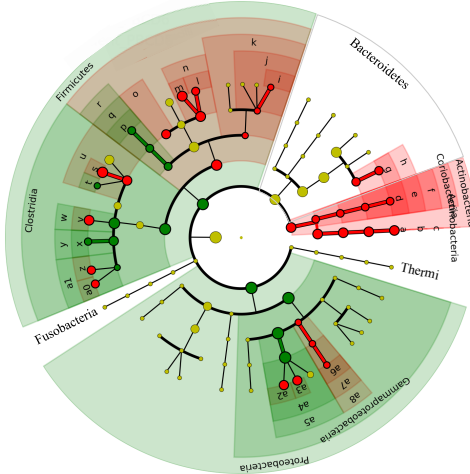


■ Deficient diet  
■ Sufficient diet

#### Abbreviations

- |  |  |
|--|--|
| <span style="color: green;">■</span> a: Bifidobacterium      | <span style="color: green;">■</span> n: Lachnospiraceae    |
| <span style="color: green;">■</span> b: Bifidobacteriaceae   | <span style="color: red;">■</span> o: Ruminococcus         |
| <span style="color: green;">■</span> c: Bifidobacteriales    | <span style="color: red;">■</span> p: Burkholderiales      |
| <span style="color: red;">■</span> d: Bacteroides            | <span style="color: green;">■</span> q: Shewanella         |
| <span style="color: red;">■</span> e: Bacteroidaceae         | <span style="color: green;">■</span> r: Alteromonadales    |
| <span style="color: red;">■</span> f: Rikenellaceae          | <span style="color: green;">■</span> s: Proteus            |
| <span style="color: red;">■</span> g: Bacteroidales          | <span style="color: green;">■</span> t: Enterobacteriaceae |
| <span style="color: red;">■</span> h: EnterococcaceaeOther   | <span style="color: green;">■</span> u: Enterobacteriales  |
| <span style="color: red;">■</span> i: Lactobacillus          | <span style="color: green;">■</span> v: Halomonas          |
| <span style="color: red;">■</span> j: Lactobacillaceae       | <span style="color: green;">■</span> w: Halomonadaceae     |
| <span style="color: green;">■</span> k: LactobacillalesOther | <span style="color: green;">■</span> x: Oceanospirillales  |
| <span style="color: red;">■</span> l: Lactobacillales        |  |
| <span style="color: red;">■</span> m: Ruminococcus           |  |

### PTD6

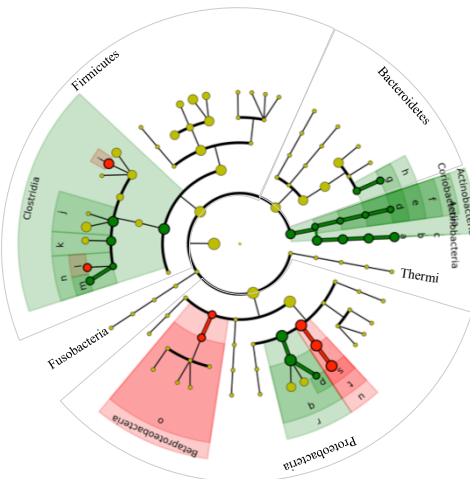


■ Deficient diet  
■ Sufficient diet

#### Abbreviations

- |  |   |  |
|--|---|--|
| <span style="color: red;">■</span> a: Bifidobacterium      | <span style="color: red;">■</span> n: Enterococcaceae           | <span style="color: red;">■</span> a0: Ruminococcus            |
| <span style="color: red;">■</span> b: Bifidobacteriaceae   | <span style="color: red;">■</span> o: LactobacillalesOther      | <span style="color: green;">■</span> a1: Ruminococcaceae       |
| <span style="color: red;">■</span> c: Bifidobacteriales    | <span style="color: green;">■</span> p: Turicibacter            | <span style="color: red;">■</span> a2: EnterobacteriaceaeOther |
| <span style="color: red;">■</span> d: Eggerthella          | <span style="color: green;">■</span> q: Turicibacteraceae       | <span style="color: red;">■</span> a3: Proteus                 |
| <span style="color: red;">■</span> e: Coriobacteriaceae    | <span style="color: green;">■</span> r: Turicibacteriales       | <span style="color: green;">■</span> a4: Enterobacteriaceae    |
| <span style="color: red;">■</span> f: Coriobacteriales     | <span style="color: red;">■</span> s: Clostridium               | <span style="color: green;">■</span> a5: Enterobacteriales     |
| <span style="color: red;">■</span> g: Bacteroides          | <span style="color: green;">■</span> t: SMB53                   | <span style="color: red;">■</span> a6: Halomonas               |
| <span style="color: red;">■</span> h: Bacteroidaceae       | <span style="color: red;">■</span> u: Clostridiaceae            | <span style="color: red;">■</span> a7: Halomonadaceae          |
| <span style="color: red;">■</span> i: Anaerobacillus       | <span style="color: red;">■</span> v: Ruminococcus              | <span style="color: red;">■</span> a8: Oceanospirillales       |
| <span style="color: red;">■</span> j: Bacillaceae          | <span style="color: green;">■</span> w: Lachnospiraceae         |  |
| <span style="color: red;">■</span> k: Bacillales           | <span style="color: green;">■</span> x: PeptostreptococcaceaeOt |  |
| <span style="color: red;">■</span> l: EnterococcaceaeOther | <span style="color: green;">■</span> y: Peptostreptococcaceae   |  |
| <span style="color: red;">■</span> m: Enterococcus         | <span style="color: red;">■</span> z: Oscillospira              |  |

### PCD0



■ Deficient diet  
■ Sufficient diet

#### Abbreviations

- |   |  |
|---|--|
| <span style="color: green;">■</span> a: Bifidobacterium       | <span style="color: green;">■</span> n: Ruminococcaceae    |
| <span style="color: green;">■</span> b: Bifidobacteriaceae    | <span style="color: red;">■</span> o: Burkholderiales      |
| <span style="color: green;">■</span> c: Bifidobacteriales     | <span style="color: green;">■</span> p: Serratia           |
| <span style="color: green;">■</span> d: Eggerthella           | <span style="color: green;">■</span> q: Enterobacteriaceae |
| <span style="color: green;">■</span> e: Coriobacteriaceae     | <span style="color: green;">■</span> r: Enterobacteriales  |
| <span style="color: green;">■</span> f: Coriobacteriales      | <span style="color: red;">■</span> s: Halomonas            |
| <span style="color: green;">■</span> g: Bacteroides           | <span style="color: red;">■</span> t: Halomonadaceae       |
| <span style="color: green;">■</span> h: Bacteroidaceae        | <span style="color: red;">■</span> u: Oceanospirillales    |
| <span style="color: red;">■</span> i: Clostridium             |  |
| <span style="color: green;">■</span> j: Lachnospiraceae       |  |
| <span style="color: green;">■</span> k: Peptostreptococcaceae |  |
| <span style="color: red;">■</span> l: Oscillospira            |  |
| <span style="color: green;">■</span> m: Ruminococcus          |  |