

Supplemental Table 2. Association of *TCNI*-rs34530014 with RBC indices and homocysteine in JHS and WHI-SHARe African Americans

Trait	N (JHS/WHI-SHARe)	EA/NEA	JHS		WHI-SHARe		Combined	
			BETA(SE)	<i>P</i>	BETA(SE)	<i>P</i>	BETA(SE)	<i>P</i> [†]
HGB	3258/8175	A/AC	-0.040(0.085)	0.636	-0.005(0.050)	0.917	-0.014(0.043)	0.745
HCT	3258/8162	A/AC	0.026(0.241)	0.915	-0.001(0.149)	0.994	0.007(0.127)	0.959
MCH	2924/2276	A/AC	-0.363(0.176)	0.039	-0.371(0.210)	0.078	-0.366(0.135)	0.007
MCHC	2924/2276	A/AC	-0.162(0.064)	0.011	0.161(0.110)	0.145	-0.080(0.055)	0.147
MCV	2924/2276	A/AC	-0.693(0.449)	0.122	-1.587(0.631)	0.012	-0.994(0.366)	0.007
RBC counts	2924/2276	A/AC	0.048(0.032)	0.130	0.081(0.044)	0.063	0.059(0.026)	0.022
RDW	2923/2275	A/AC	0.090(0.096)	0.348	0.182(0.135)	0.176	0.121(0.078)	0.122
Homocysteine*	3321/-	A/AC	0.022(0.019)	0.231	-	-	-	-

EA, effect allele; NEA, non-effect allele; EAF, effect allele frequency.

* Homocysteine concentration were natural log-transformed before analysis.

† $P < 0.006$ (0.05/8 indices) indicated significant evidence of association.

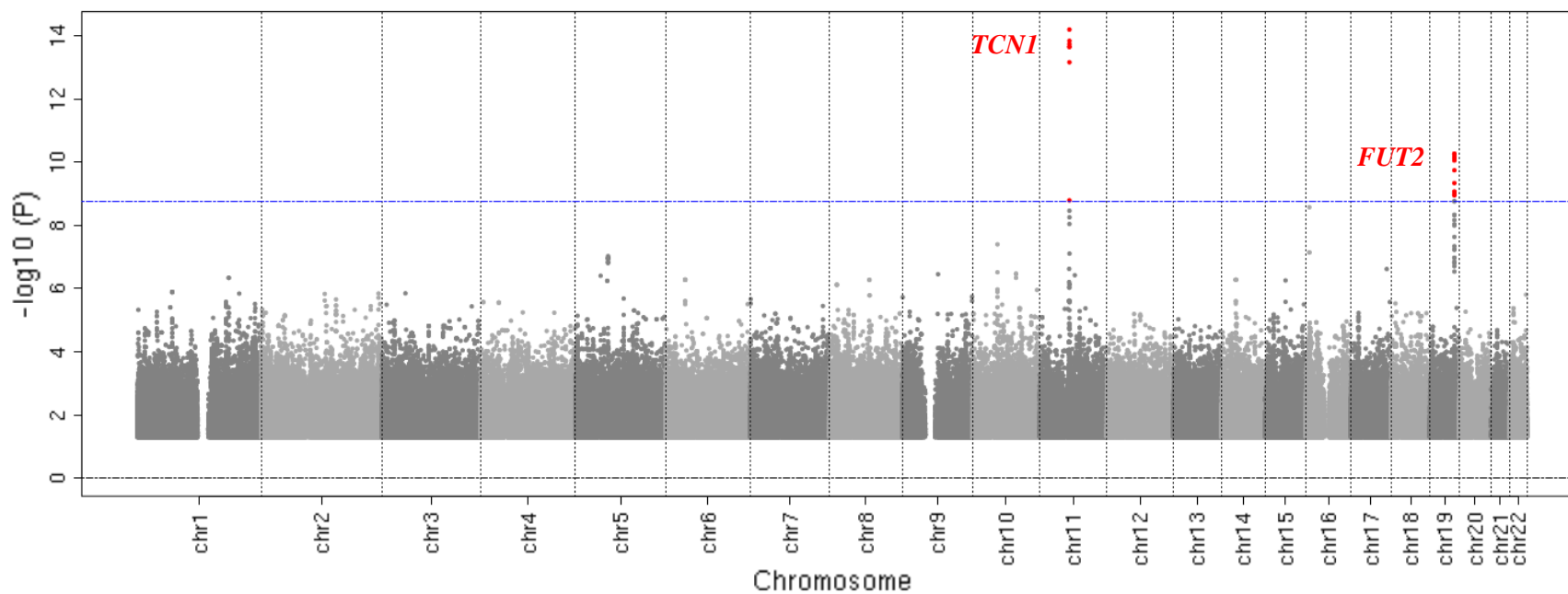
Supplemental Table 4. Association of rs601338 and rs507766 at *FUT2* with VB12 concentration in JHS

SNP	CHR:POS	N	EA/NEA	EAF	Model	BETA(SE)	<i>P</i> *	<i>P</i> <i>conditon</i>
rs507766	19:49208543	1280	T/C	0.448	Dosage	-0.259(0.039)	5.51×10 ⁻¹¹	1.06×10 ⁻⁴
					Additive	-0.067(0.021)		0.002
rs601338	19: 49206674	1280	G/A	0.491	Dosage	-0.204(0.039)	1.49×10 ⁻⁷	0.568
					Dominant	-0.107(0.034)		0.002

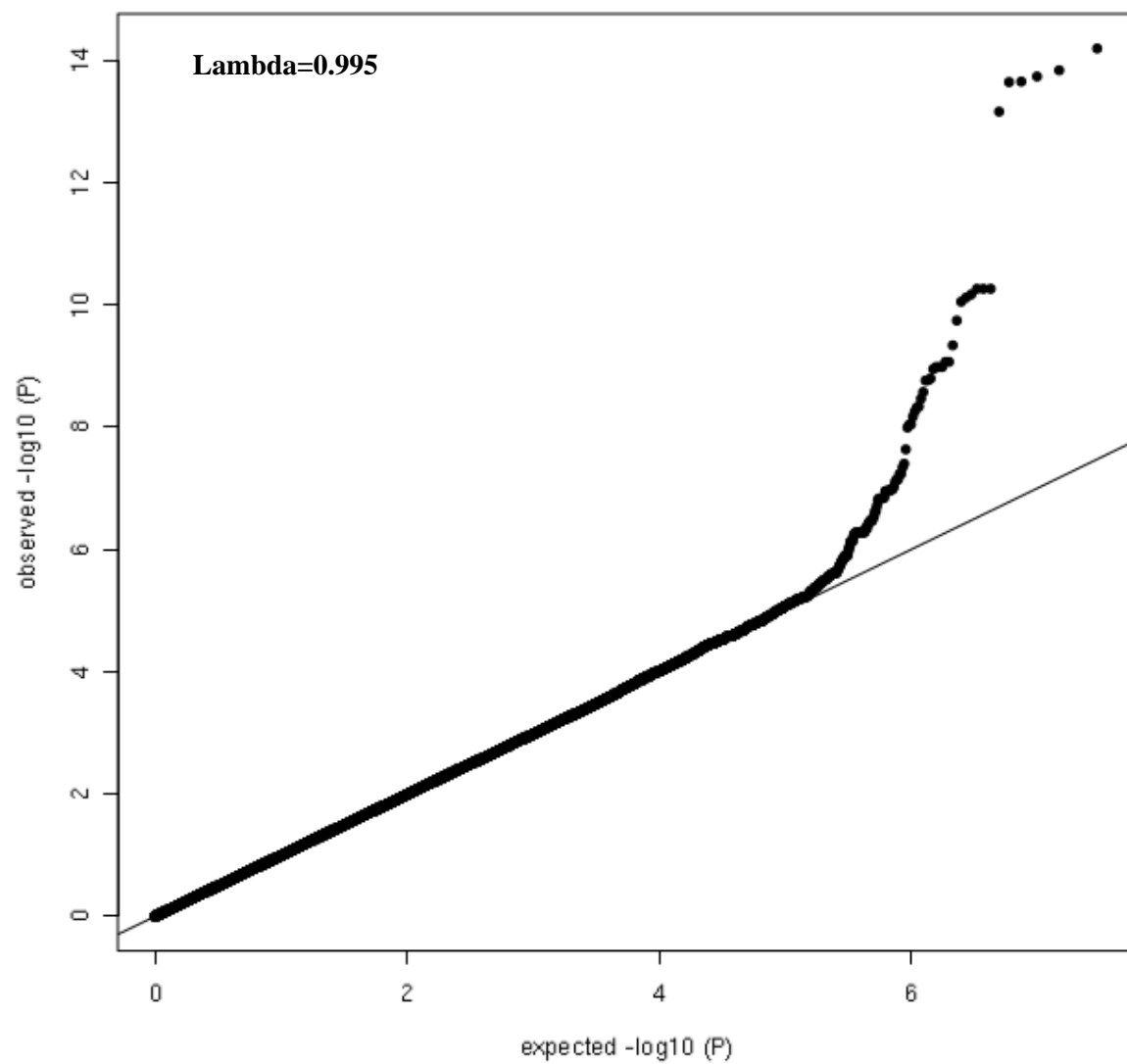
CHR: chromosome; POS: position; EA, effect allele; NEA, non-effect allele; EAF, effect allele frequency.

* Genome-wide significance was pre-defined as $P < 1.69 \times 10^{-9}$, or 0.05/29,665,030 variants tested.

Supplemental Figure 1. Manhattan plot and quantile-quantile (QQ) plot for VB12 association results in JHS. (A) Manhattan plot. X-axis and y-axis of the Manhattan plot indicated ordered chromosome and $-\log_{10}(P \text{ value})$, respectively. Red dots in the Manhattan plot represented genome-wide significant variants ($P < 1.69 \times 10^{-9}$). (B) QQ plot. X-axis and y-axis of the QQ plot indicated expected and observed $-\log_{10}(P \text{ value})$, respectively.



(B)



Supplemental methods

The Jackson Heart Study (JHS)

JHS is a longitudinal, population-based cohort, which was designed for prospective research into the epidemiology and determinant of cardiovascular disease (CVD) in African American (AA) populations from the Jackson, Mississippi metropolitan area ¹. The design and sampling of JHS included participants the Jackson cohort of the U.S. Atherosclerosis Risk in Communities Study (ARIC), a random component, a family component, and a structured volunteer sample ². Study baseline data collection began in late 2000 and was completed in early 2004, and a total of 5,306 male and female participants were recruited. The baseline examination included a home interview, a clinic visit, laboratory tests, complete blood cell counts and a physical examination. VB12 was measured in a subset of 1,851 JHS participants based on available budget, and these participants were consecutive initial enrollees at baseline.

30× whole genome sequencing (WGS) was performed at Northwest Genomics Center at University of Washington for all TOPMed samples. After sample quality control (QC), a total of 3,406 JHS participants were included in the TOPMed freeze4 data set. The sequencing reads were transferred to the TOPMed Informatics Research Center (IRC), where they were aligned to build GRCh37 and joint genotype calling was performed on all TOPMed samples. Variant QC was performed by the Sequencing Centers, the IRC and the TOPMed Data Coordinating Center (DCC). Details of the WGS, variant calling and QC protocols used in TOPMed are described in the Sequencing Methods section below provided by TOPMed. Variants with minor allele frequency (MAF) ≤ 0.001 were excluded from the association analysis.

Additional studies for replication and follow-up

The replication and the phenome-wide association study (PheWAS) of the African-specific *TCN1* loss of function (LoF) variant rs34530014 were performed in the Biobank of Vanderbilt University (BioVU) and BioMe of Mount Sinai, using a proxy rs11822978 ($r^2=0.98$). The association of rs34530014 with red blood cell (RBC) indices and homocysteine was assessed in JHS and the Women's Health Initiative SNP Health Association Resource (WHI-SHARe).

BioVU is a large de-identified DNA banks linked to phenotypic data derived from electronic medical record (EMR) system ³. The goal of BioVU is to provide a resource for studies of genotype –phenotype associations. Planning for BioVU began in mid-2004 and the first samples were collected in February 2007. The program plan was reviewed and approved by the Institutional Review Board. Patients have a choice to donate any leftover samples to BioVU by signing the BioVU consent form during check-in at a Vanderbilt University Medical Center (VUMC) outpatient clinic. BioVU VB12 measurements were obtained from the EMR system, and the median value was used when a patient had multiple measurements. Samples were genotyped on the Multi-Ethnic Global Array and the genotypes were imputed into the Haplotype Reference Consortium (HRC) reference panel using the Michigan imputation server. Imputed data and the 1000 Genome Project data of CEU, YRI, CHB+JPT descent were combined to carry out principal component analysis (PCA), and only samples of AA descent were extracted for analysis based on the PCA plot. The association of the proxy variants rs11822978 with log-transformed VB12 concentration was assessed in 748 AAs using linear regression, adjusted for age, sex, the first ten principal components (PCs) of genetic ancestry and array type.

Mount Sinai's BioMe, founded in September 2007, is an ongoing, broadly-consented electronic health records (EHR)-linked bio- and data repository that enrolls participants non-selectively from the Mount Sinai Medical Center patient population and comprises >40,000 participants, characterized by a broad spectrum of longitudinal biomedical traits ⁴. Enrolled participants consent to be followed throughout their clinical care (past, present, and future) in real-time, allowing us to integrate their genomic information with their EHRs for discovery research and clinical care implementation. BioMe participants represent a broad racial, ethnic and socioeconomic diversity with a distinct and

population-specific disease burden, characteristic of the communities served by Mount Sinai Hospital. BioMe participants are of African (~24%), Hispanic/Latino (~35%), European (32%) and other/mixed ancestry. Serum VB12 concentrations were collected from existing physician-ordered test results present in participants' electronic medical records. AA participants, along with those of other ancestries, were genotyped on two arrays, the Illumina Infinium OmniExpress plus HumanExome array, as well as the Illumina Multi-Ethnic Genotyping Array (MEGA) which was part of the Population Architecture using Genomics and Epidemiology (PAGE) study. Over 12,000 BioMe participants of multiple ancestries were genotyped on the Illumina Infinium OmniExpress plus HumanExome array. Calling was performed using the GenomeStudio software. Individuals were filtered for plate failure, unambiguous discordance between genetic and EHR recorded sex, a call rate of <98%, and deviances in heterozygosity levels. Additional quality control of remaining individuals was performed using PLINK1.7. Variant QC consisted of the removal of SNPs with a call rate below 95%, and the removal of sites that were significantly out of Hardy-Weinberg equilibrium (HWE) when calculated separately by self-reported ancestry. Palindromic sites and those that deviated considerably from the 1000 Genome Project allele frequencies (<40% versus >60%) were also removed to ensure uniform stranding across datasets. Over 12,000 BioMe participants of multiple ancestries were also genotyped on the MEGA, making up a portion of the PAGE sample. PAGE samples were genotyped on the MEGA at the Johns Hopkins Center for Inherited Disease Research (CIDR). Genotyping data that passed initial quality control at CIDR were released to the Quality Assurance/Quality Control (QA/QC) analysis team at the University of Washington Genetics Coordinating Center (UWGCC). The UWGCC further cleaned the data according to previously described methods ⁵. A total of 1,705,969 SNPs were genotyped on the MEGA. Variant filters included CIDR technical filters, SNPs with missing call rate $\geq 2\%$, SNPs with more than 6 discordant calls in study duplicates, SNPs with Mendelian errors in family trios and duos, SNPs with a HWE $P < 10^{-10}$, and positional duplicates. After these QC procedures, genotypic data from both arrays was imputed to the 1000 Genomes Phase 3 reference panel. Imputation QC included filters for invalid alleles, haplotype-inferred missingness, discordant sex between genetic sex and electronic medical records, monomorphic sites, duplicate sites, and allele mismatch to the reference panel. The association of the proxy variants rs11822978 with log-transformed VB12 concentration was assessed in 3,199 AAs using linear regression, adjusted for age, sex and the first ten PCs of genetic ancestry.

The Women's Health Initiative (WHI) is a long-term, prospective, multi-center cohort study investigating postmenopausal women's health in the US. It was aimed to study strategies to prevent heart disease, breast cancer, colon cancer, and osteoporotic fractures in women 50-79 years of age ⁶. WHI involves 161,808 women recruited between 1993 and 1998 at 40 centers across the US. WHI-SNP Health Association Resource (WHI-SHARe) included women participants enrolled in WHI whose self-reported ethnicity was African Americans or Hispanics. An Affymetrix 6.0 chip was used for genotyping, and genotypes were then imputed using the 1000 Genome Phase 3 reference panel. Associations of the *TCN1* LoF variant rs34530014 with RBC indices were assessed in 8,175 AAs using linear regression, adjusted for age and the first ten PCs of genetic ancestry.

References

1. Sempos CT, Bild DE, Manolio TA. Overview of the Jackson Heart Study: a study of cardiovascular diseases in African American men and women. *Am J Med Sci.* 1999;317(3):142-146.
2. Taylor HA, Jr., Wilson JG, Jones DW, et al. Toward resolution of cardiovascular health disparities in African Americans: design and methods of the Jackson Heart Study. *Ethn Dis.* 2005;15(4 Suppl 6):S6-4-17.
3. Roden DM, Pulley JM, Basford MA, et al. Development of a large-scale de-identified DNA biobank to enable personalized medicine. *Clin Pharmacol Ther.* 2008;84(3):362-369.
4. Belbin GM, Odgis J, Sorokin EP, et al. Genetic identification of a common collagen disease in puerto ricans via identity-by-descent mapping in a health system. *Elife.* 2017;6.
5. Laurie CC, Doheny KF, Mirel DB, et al. Quality control and quality assurance in genotypic data for genome-wide association studies. *Genet Epidemiol.* 2010;34(6):591-602.
6. Design of the Women's Health Initiative clinical trial and observational study. The Women's Health Initiative Study Group. *Control Clin Trials.* 1998;19(1):61-109.

Sequencing Methods

(<https://www.nhlbiwgs.org/sequencing-and-data-processing-methods-freeze4>)

Overview

Trans-Omics for Precision Medicine (TOPMed), sponsored by the National Heart, Lung and Blood Institute (NHLBI), generates scientific resources to enhance our understanding of fundamental biological processes that underlie heart, lung, blood and sleep disorders (HLBS). It is part of the broader Precision Medicine Initiative, which aims to provide disease treatments that are tailored to an individual's unique genes and environment. TOPMed contributes to this initiative by integrating whole-genome sequencing (WGS) and other –omics data (e.g., metabolic profiles, protein and RNA expression patterns) with molecular, behavioral, imaging, environmental, and clinical data. In doing so, the TOPMed program seeks to uncover factors that increase or decrease the risk of disease, identify subtypes of disease, and develop more targeted and personalized treatments.

Currently, TOPMed includes 60 different studies with ~120,000 samples undergoing whole genome sequencing. The studies encompass several experimental designs (e.g. cohort, case-control, family) and many different clinical trait areas (e.g. asthma, COPD, atrial fibrillation, atherosclerosis, sleep). See study descriptions under the “Studies” tab on this web site.

TOPMed WGS data will be released in multiple waves. The first release, in October 2016, included ~8,600 samples in 15 separate dbGaP accessions. Some TOPMed studies have previously released genotypic and phenotypic data on dbGaP in “parent” accessions. For those studies, the TOPMed WGS accession contains only WGS-derived data and, therefore, genotype-phenotype analysis requires access to data from both parent and TOPMed WGS accessions. For the studies in the Table without a specific parent accession number, the TOPMed WGS accession contains both genotype and phenotype data.

The following sections of this document describe methods of data acquisition, processing and quality control (QC) for TOPMed WGS data contained in the April 2017 releases. Briefly, ~30X whole genome sequencing was performed at several different Sequencing Centers (named in the Table). All samples for a given study were sequenced at the same center, except for a small number of control samples described below. The reads were aligned to human genome build GRCh37 at each center using similar, but not identical, processing pipelines. The resulting BAM files were transferred from all centers to the TOPMed Informatics Research Center (IRC), where they were re-aligned to build GRCh37, using a common pipeline to produce a set of ‘harmonized’ BAM files. Both the Sequencing Center-specific BAM and the harmonized BAM files were deposited in the NCBI Sequence Read Archive (SRA), where they were converted to ‘.sra’ file format. Both center-specific and IRC-harmonized .sra files are available to users with approved access to a given study. The IRC performed joint genotype calling on all samples in the April 2017 releases. The resulting VCF files were split by study and consent group for distribution to approved dbGaP users, but can be reassembled easily for cross-study, pooled analysis because the files for all studies contain identical lists of variant sites. Quality control was performed at each stage of the process by the Sequencing Centers, the IRC and the TOPMed Data Coordinating Center (DCC). Only samples and variants that passed QC are included in the genotype call sets distributed with the April 2017 releases.

Sequence/genotype data files provided in the April 2017 dbGaP releases include the following:

1. Aligned read data for each sample in '.sra' format (which is readily convertible to BAM format). Each sample has two .sra files: one from the Sequencing Center and the other from the IRC
2. Genotype call sets (one per chromosome) in '.vcf' format

TOPMed DNA sample/sequencing-instance identifiers

Each DNA sample processed by TOPMed was given a unique identifier as "NWD" followed by six digits (e.g. NWD123456). These identifiers are unique across all TOPMed studies. Each NWD identifier is associated with a single study subject identifier used in other dbGaP files (such as phenotypes, pedigrees and consent files). A given subject identifier may link to multiple NWD identifiers when duplicate samples are taken from the same individual. Study investigators assigned NWD IDs to subjects, and their biorepositories assigned DNA samples/ NWD IDs to specific bar-coded wells/tubes supplied by their Sequencing Center, and recorded those assignments in a sample manifest, along with other metadata (e.g. sex, DNA extraction method). At each Sequencing Center, the NWD ID was propagated through all phases of the pipeline and is the primary identifier in all results files. Each NWD ID resulted in a single sequencing instance (i.e. 'run' in SRA terminology), which is linked to a single subject identifier in the sample-subject mapping file for each accession. Note that subject identifiers are study-specific and may not be unique across all of TOPMed accessions.

Control Samples

One parent-offspring trio from the Framingham Heart Study (FHS) was sequenced at each of four Sequencing Centers (family ID 746, subject IDs 13823, 15960 and 20156). All four WGS runs for each subject are provided in the TOPMed FHS accession (phs000974). In addition, HapMap subjects NA12878 (CEU, Lot K6) and NA19238 (YRI, Lot E2) were sequenced at each of the Sequencing Centers in alternation, once approximately every 1000 study samples. The HapMap sequence data will be released publicly as a BioProject.

The average pairwise non-reference genotype discordance rate among 69 pairs of duplicate sequenced samples is 5×10^{-5} . The genotype discordance rate is very sensitive to the stringency level used for variant site filtering. This low figure is evidence of the benefit of 30x whole genome sequencing and suggests that the current filtering threshold suitably balances sensitivity and specificity. It must be acknowledged that these 27 control samples were among 4,047 duplicate and related samples which provided a negative training set for the SVM classifier used for site level filtering (see Variant Filtering section).

To calculate non-reference discordance, the genotypes of each DNA sample are called independently from separate sets of sequence reads, often from different Sequencing Centers. The denominator for each pairwise comparison is the number of sites where at least one of the two samples has a non-reference genotype called (either het or hom-alt). The numerator is the number of sites where the two genotypes disagree.

Sequencing Center Methods

Broad Institute of MIT and Harvard

Stacey Gabriel

DNA Sample Handling and QC

DNA samples are informatically received into the Genomics Platform's Laboratory Information Management System via a scan of the tube barcodes using a Biosero flatbed scanner. This registers the samples and enables the linking of metadata based on well position. All samples are then weighed on a BioMicro Lab's XL20 to determine the volume of DNA present in sample tubes. Following this the samples are quantified in a process that uses PICO-green fluorescent dye. Once volumes and concentrations are determined, the samples are handed off to the Sample Retrieval and Storage Team for storage in a locked and monitored -20 walk-in freezer.

Library Construction

Samples undergo fragmentation by means of acoustic shearing using Covaris focused-ultrasonicator, targeting 385 bp fragments. Following fragmentation, additional size selection is performed using a SPRI cleanup. Library preparation is performed using a commercially available kit provided by KAPA Biosystems (product KK8202) with palindromic forked adapters with unique 8 base index sequences embedded within the adapter (purchased from IDT). Following sample preparation, libraries are quantified using quantitative PCR (kit purchased from KAPA biosystems) with probes specific to the ends of the adapters. This assay is automated using Agilent's Bravo liquid handling platform. Based on qPCR quantification, libraries are normalized to 1.7 nM. Samples are then pooled into 24-plexes and the pools are once again qPCRred. Samples are then combined with HiSeq X Cluster Amp Mix 1,2 and 3 into single wells on a strip tube using the Hamilton Starlet Liquid Handling system.

Clustering and Sequencing

As described in the library construction process, 96 samples on a plate are processed together through library construction. A set of 24 barcodes is used to index the samples. Barcoding allows pooling of samples prior to loading on sequencers and mitigates lane-lane effects at a single sample level. The plate is broken up into 4 pools of 24-samples each. The four pools are taken as columns on the plate (e.g., columns 1-3; 4-6; 7-9; 10-12). From this format (and given the current yields of a HiSeqX) the 4 pools are spread over 3 flowcells (24 lanes). Cluster amplification of the templates was performed according to the manufacturer's protocol (Illumina) using the Illumina cBot. Flowcells were sequenced on Hi Seq X with sequencing software HiSeq Control Software (HCS) version 3.3.76, then analyzed using RTA2 (Real Time Analysis).

Read Processing

For TOPMED phase 1 data the following versions were used for aggregation, and alignment to hg19_decoy reference: picard (latest version available at the time of the analysis), GATK (3.1-144-g00f68a3) and BwaMem (0.7.7-r441).

Sequence Data QC

A sample is considered sequence complete when the mean coverage is $\geq 30x$. Two QC metrics that are reviewed along with the coverage are the sample Fingerprint LOD score (score which estimates the probability that the data is from a given individual) and % contamination. At aggregation, we do an all-by-all comparison of the read group data and estimate the likelihood that each pair of read groups is from the same individual. If any pair has a LOD score < -20.00 , the aggregation does not proceed and is investigated. FP LOD ≥ 3 is considered passing concordance with the sequence data (ideally we see LOD >10). A sample will have an LOD of 0 when the sample failed to have a passing fingerprint. Fluidigm fingerprint is repeated once if failed. Read groups with fingerprints < -3.00 are blacklisted from the aggregation. If the sample does not meet coverage, it will be topped off for additional coverage. If a large % of

read groups are blacklisted, it will be investigated as a potential sample swap. In terms of contamination, a sample is considered passing if the contamination is less than 5%. In general, the bulk of the samples have less than 1% contamination.

Illumina Genomic Services

Karine Viaud Martinez

DNA Sample Handling and QC

Project samples are processed from 96-well barcoded plates provided by Illumina. Electronic manifest including unique DNA identification number describing the plate barcode and well position (eg, LP6002511-DNA_A01) and samples information (e.g. Gender, Concentration, Volume, Tumor/normal, Tissue type, Replicate...) is accessioned in LIMS. This enables a seamless interface with our robotic processes and retains sample anonymity. An aliquot of each sample is processed in parallel through the Infinium Omni 2.5M (InfiniumOmni2.5Exome-8v1, HumanOmni25M-8v1) genotyping array and an identity check is performed between the sequencing and array data via an internal pipeline. Genomic DNA is quantified prior to library construction using PicoGreen (Quant-iT™ PicoGreen® dsDNA Reagent, Invitrogen, Catalog #: P11496). Quants are read with Spectromax Gemini XPS (Molecular Devices).

Library Construction

Samples are batched using LIMS, and liquid handling robots perform library preparation to guarantee accuracy and enable scalability. All sample and reagent barcodes are verified and recorded in LIMS. Paired-end libraries are generated from 500ng–1ug of gDNA using the Illumina TruSeq DNA Sample Preparation Kit (Catalog #: FC-121-2001), based on the protocol in the TruSeq DNA PCR-Free Sample Preparation Guide. Pre-fragmentation gDNA cleanup is performed using paramagnetic sample purification beads (Agencourt® AMPure® XP reagents, Beckman Coulter). Samples are fragmented and libraries are size selected following fragmentation and end-repair using paramagnetic sample purification beads, targeting short insert sizes. Final libraries are quality controlled for size using a gel electrophoretic separation system and are quantified.

Clustering and Sequencing

Following library quantitation, DNA libraries are denatured, diluted, and clustered onto v4 flow cells using the Illumina cBot™ system. A phiX control library is added at approximately 1% of total loading content to facilitate monitoring of run quality. cBot runs are performed based on the cBot User Guide, using the reagents provided in Illumina TruSeq Cluster Kit v4.

Clustered v4 flow cells are loaded onto HiSeq 2000 instruments and sequenced on 125 bp paired-end, non-indexed runs. All samples are sequenced on independent lanes. Sequencing runs are performed based on the HiSeq 2000 User Guide, using Illumina TruSeq SBS v4 Reagents. Illumina HiSeq Control Software (HCS) and Real-Time Analysis (RTA) are used on HiSeq 2000 sequencing runs for real-time image analysis and base calling.

Read Processing

The Whole Genome Sequencing Service leverages a suite of proven algorithms to detect genomic variants comprehensively and accurately. Most versions of the Illumina callers are open source and available publicly. See the

Illumina GitHub (<https://github.com/Illumina>) for the current releases. One or more lanes of data were processed from run folders directly with the internal use only ISAS framework (2.5.55.16 or 2.5.26.13 depending on the start of the project), including alignment with iSAAC (iSAAC-01.14.02.06 or iSAAC-SAAC00776.15.01.27), small variant called with Starling (2.0.17 or starka-2.1.4.2), structural variant called with Manta (manta-0.18.1 or manta-0.23.1) and copy number variant Canvas (v4.0).

Sequence Data QC

The genome build QC pipeline is automated to evaluate both primary (sequencing level) and secondary (build level) metrics against expectations based on historical performance. Multiple variables, such as Gb of high quality (Q30) data, mismatch rates, percentage of aligned reads, insert size distribution, concordance to the genotyping array run in parallel, average depth of coverage, number of variants called, callability of the genome as a whole as well as of specific regions (evenness of coverage), het/hom ratio, duplicate rates, and noise are assessed. Genome builds that are flagged as outliers at QC are reviewed by our scientists for investigation. Scientists review all QC steps during the process: Library quantification and fragment size; run quality; genotyping and sequencing data considering Sample Manifest information (Tumor/Normal, tissue type). Libraries or sequencing lanes may be queued for additional sequencing or library prep as needed.

New York Genome Center

Soren Germer

DNA Sample Handling and QC

Genomic DNA samples were submitted in NYGC-provided 2D barcoded matrix rack tubes. Sample randomization was performed at investigator lab prior to sample submission. Upon receipt, the matrix racks were inspected for damage and scanned using a VolumeCheck instrument (BioMicroLab), and tube barcode and metadata from the sample manifest uploaded to NYGC LIMS. Genomic DNA was quantified using the Quant-iT PicoGreen dsDNA assay (Life Technologies) on a Spectramax fluorometer, and the integrity was ascertained on a Fragment Analyzer (Advanced Analytical). After sample quantification, a separate aliquot (100ng) was removed for SNP array genotyping with the HumanCoreExome-24 array (Illumina). Array genotypes were used to estimate sample contamination (using VerifyIDintensity), for sample fingerprinting, and for downstream quality control of sequencing data. Investigator was notified of samples that failed QC for total mass, degradation or contamination, and replacement samples were submitted.

Library Construction

Sequencing libraries were prepared using the TruSeq PCR-free DNA HT Library Preparation Kit (Illumina) with 500 ng DNA input, following manufacturer's protocol with minor modifications to account for automation. Briefly, genomic DNA was sheared using the Covaris LE220 sonicator to a target size of 450 bp (t:78; Duty:15; PIP:450; 200 cycles), followed by end-repair and bead based size selection of fragmented molecules. The selected fragments were A-tailed, and sequence adaptors ligated onto the fragments, followed by two bead clean-ups of the libraries. These steps were carried out on the Caliper SciClone NGSx workstation (Perkin Elmer). Final libraries are evaluated for size distribution on the Fragment Analyzer and quantified by qPCR with adaptor specific primers (Kapa Biosystems).

Clustering and Sequencing

Final libraries were multiplexed for 8 samples per sequencing lane, with each sample pool sequenced across 8 flow cell lanes. 1% PhiX control was spiked into each library pool. The library pools were quantified by qPCR, loaded on the to HiSeq X patterned flow cells and clustered on an Illumina cBot following manufacturer's protocol. Flow cells were sequenced on the Illumina HiSeq X with 2x150bp reads, using V2 sequencing chemistry, and Illumina HiSeq Control Software v3.1.26.

Read Processing

Demultiplexing of sequencing data was performed with bcl2fastq2 v2.16.0.10, and sequencing data was aligned to human reference build 37 (hs37d5 with decoy) using BWA-MEM v0.7.8. Data was further processed using the GATK best-practices v3.2-2 pipeline, with duplicate marking using Picard tools v1.83, realignment around indels, and base quality recalibration. Individual sample BAM files were squeezed using Bamutil v1.0.9 with default parameters -- removing OQ's, retaining duplicate marking and binning quality scores (binMid) -- and transferred to the IRC using Globus. Individual sample SNV and indel calls were generated using GATK haplotype caller and joint genotyping was performed across all the NYGC phase 1 samples.

Sequence Data QC

Prior to release of BAM files to IRC, we ensured that mean genome coverage was $\geq 30x$, when aligning to the ~2.86Gb sex specific mappable genome, and that uniformity of coverage was acceptable (>90% of genome covered >20x). Sample identity and sequencing data quality was confirmed by concordance to SNP array genotypes. Sample contamination was estimated with VerifyBAMid v1.1.0 (threshold <3%). Gender was determined from X- and Y-chromosome coverage and checked against submitter information. Further QC included review of alignment rates, duplicate rates, and insert size distribution. Metrics used for review of SNV and indel calls included: the total number of variants called, the ratio of novel to known variants, and the Transition to Transversion ratios, and the ratio of heterozygous to homozygous variant calls.

Northwest Genomics Center

Deborah Nickerson

DNA Sample Handling and QC

The NWGC centralizes all receipt, tracking, and quality control/assurance of DNA samples in a Laboratory Information Management System. Samples are assigned unique barcode tracking numbers and have a detailed sample manifest (i.e., identification number/code, sex, DNA concentration, barcode, extraction method). Initial QC entails DNA quantification, sex typing, and molecular "fingerprinting" using a high frequency, cosmopolitan genotyping assay. This 'fingerprint' is used to identify potential sample handling errors and provides a unique genetic ID for each sample, which eliminates the possibility of sample assignment errors. In addition, we spot check ~8% of the samples per batch on an agarose gel to check for high molecular weight DNA, if DNA degradation is detected all samples are checked. Samples are failed if: (1) the total amount, concentration, or integrity of DNA is too low; (2) the fingerprint assay produces poor genotype data or (3) sex-typing is inconsistent with the sample manifest. Barcoded plates were shipped to MacroGen for library construction and sequencing.

Library Construction

Libraries were constructed with a minimum of 0.4ug gDNA and are prepared in Covaris 96 microTUBE plates and sheared through a Covaris LE220 focused ultrasonicator targeting 350 bp inserts. The resulting sheared DNA is selectively purified using sample purification beads to make the precise length of insert; End-repair (repaired to blunt end), A-tailing (A-base is added to 3'end), and ligation (Y-shaped adapter is used which includes a barcode) are performed as directed by TruSeq PCR-free Kit (Illumina, cat# FC-121-3003) protocols. A second Bead cleanup is performed after ligation to remove any residual reagents and adapter dimers. To verify the size of adapter-ligated fragments, we validate the template size distribution by running on a 2200 TapeStation (Agilent, Catalog # G2964AA) using a TapeStation DNA Screen Tape (Agilent, Catalog 5067-5588). The final libraries are quantified by qPCR assay using KAPA library quantification kit (cat.# KK4808 and KK4953) on a Light Cycler 480 instrument(Roche, cat# 05015278001).

Clustering and Sequencing

Eight normalized and indexed libraries were then pooled together and denatured before cluster generation on a cBot. The 8-plex pools were loaded on eight lanes of a flow cell and sequenced on a HiSeqX using illumina's HiSeq X ten reagents kit (V2.5, cat# FC-501-2521). For cluster generation, every step is controlled by cBot. When cluster generation is complete, the clustered patterned flow cells are then sequenced with sequencing software HCS (HiSeq Control Software). The runs are monitored for %Q30 bases using the SAV (Sequencing Analysis Viewer). Using RTA 2 (Real Time Analysis 2) the BCLs (base calls) were de-multiplexed into individual FASTQs per sample using illumina package bcl2fastq v2.15.0 and transferred from Macrogen to NWGC for alignment, merging, variant calling and sequencing QC.

Read Processing

Our processing pipeline consists of aligning FASTQ files to a human reference (hs37d5) using BWA-MEM (Burrows-Wheeler Aligner; v0.7.10) (Li and Durbin 2009). All aligned read data are subject to the following steps: (1) "duplicate removal" is performed, (i.e., the removal of reads with duplicate start positions; Picard MarkDuplicates; v1.111) (2) indel realignment is performed (GATK IndelRealigner; v3.2) resulting in improved base placement and lower false variant calls and (3) base qualities are recalibrated (GATK BaseRecalibrator; v3.2). Sample BAM files were "squeezed" using Bamutil with default parameters and checksummed before being transferred to the IRC.

Sequence Data QC

All sequence data undergo a QC protocol before they are released to the TOPMed IRC for further processing. For whole genomes, this includes an assessment of: (1) mean coverage; (2) fraction of genome covered greater than 10x; (3) duplicate rate; (4) mean insert size; (5) contamination ratio; (6) mean Q20 base coverage; (7) Transition/Transversion ratio (Ti/Tv); (8) fingerprint concordance > 99%; and (9) sample homozygosity and heterozygosity. All QC metrics for both single-lane and merged data are reviewed by a sequence data analyst to identify data deviations from known or historical norms. Lanes/samples that fail QC are flagged in the system and can be re-queued for library prep (< 1% failure) or further sequencing (< 2% failure), depending upon the QC issue.

Informatics Research Center Methods

Tom Blackwell, Hyun Min Kang and Goncalo Abecasis

The IRC pipeline consists of two major processes diagrammed in the figure below: (1) Harmonization of data from the BAM files provided by the Sequencing Centers and (2) joint variant discovery and genotype calling across studies. Detailed protocols for these processes are given in the following sections.

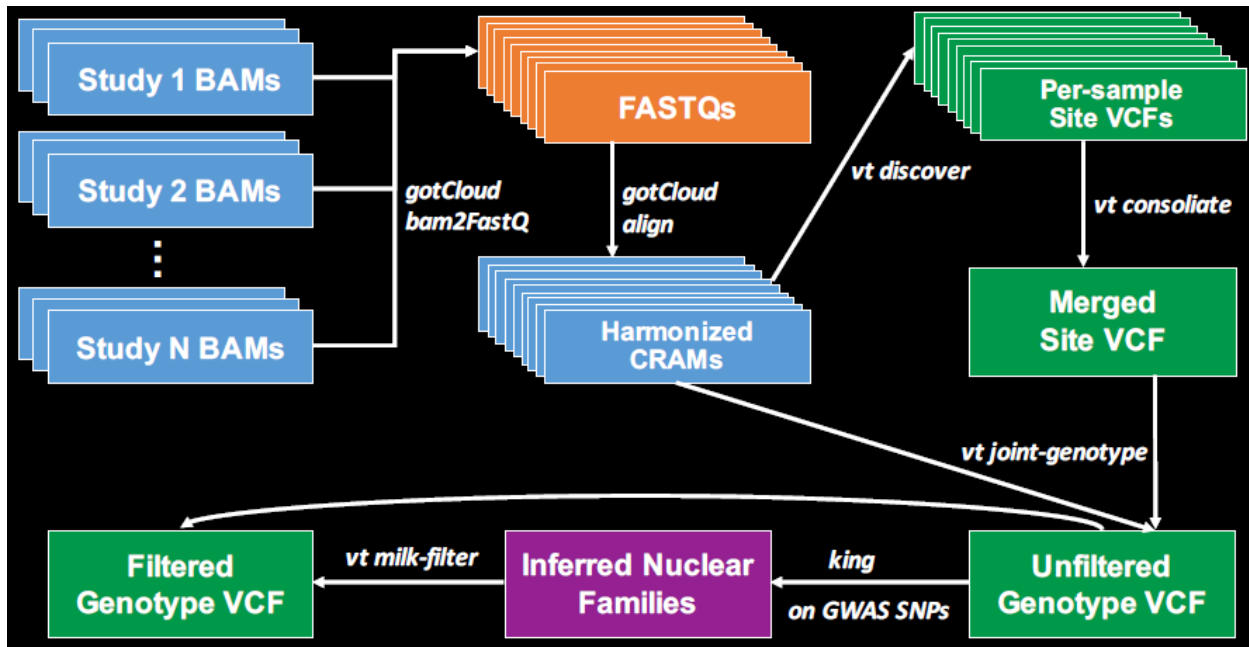


Figure : Schematic view of IRC alignment and variant calling pipeline

Harmonization of Read Alignments

Prior to joint variant discovery and genotype calling by the IRC, the sequence data obtained from the TOPMed Sequencing Centers are remapped using a standard protocol to produce “harmonized” BAM files.

Sequence data are received from each sequencing center in the form of .bam files mapped to the 1000 Genomes hs37d5 build 37 decoy reference sequence. File transfer is via Aspera or Globus Connect, depending on the center. Batches of 100 - 500 .bam files in a single directory are convenient, along with a file of md5 checksums for the files in that directory.

The IRC validates the md5 checksum, indexes each .bam file using ‘samtools index’ and runs local programs Qplot (Li, et al, 2013, doi:10.1155/2013/865181) and verifyBamId (Jun, et al, 2012, doi:10.1016/j.ajhg.2012.09.004) for incoming sequence quality control. We make a backup copy in .cram format using ‘samtools view -C’ with base call quality scores reduced to 8 bins using ‘bamUtils squeeze’ (if not already binned at the sequencing center). We add ‘NWD’ DNA sample identifiers to the read group header lines (Illumina) and convert from UCSC to Ensembl chromosome names (Illumina and Macrogen) using ‘samtools reheader’. In house scripts add read group tags as needed to legacy Illumina sequencing data from 2012-2013.

To produce the “harmonized” read mappings which are deposited in dbGaP and used for variant discovery and genotyping, we remap the sequence data in each .bam file to the 1000 Genomes hs37d5 decoy reference sequence using a uniform “IRC standard” protocol. This uses ‘bamUtils bam2fastq’ with flags ‘--splitRG --gzip’ to extract all

sequence reads by read group into paired-end .fastq format, then remaps to hs37d5.fa using 'bwa mem' version 0.7.12-r1039 with '-M' to mark split alignments as secondary. Read group header information is copied from the sequencing center .bam file. Followed by 'samtools sort', 'bamUtils polishBam', 'bamUtils mergeBam' and 'bamUtils dedup_LowMem --recab' with flags '--binMid --binQualS 2,3,10,20,25,30,35,40,50 --maxBaseQual 44' to recalibrate and bin base call quality scores. Samtools version 1.2 is used throughout. Processing is coordinated and managed by our 'GotCloud' processing pipeline.

Description of our local and standard software tools is available from:

- <http://genome.sph.umich.edu/wiki/BamUtils>
- <http://genome.sph.umich.edu/wiki/GotCloud>
- <http://genome.sph.umich.edu/wiki/QPLOT>
- <http://www.htslib.org> (samtools)
- <https://github.com/lh3/bwa> (bwa, current)
- <http://bio-bwa.sourceforge.net> (bwa, outdated)

Software sources:

- <http://genome.sph.umich.edu/w/images/7/70/BamUtilLibStatGen.1.0.13.tgz>
- <https://github.com/statgen/bamUtil/releases/tags/v1.0.13>
- <https://github.com/statgen/gotcloud/releases/tags/gotcloud.1.17.4>
- <http://www.sph.umich.edu/csg/zhanxw/software/qplot/qplot-source.20130627.tar.gz>
- <https://github.com/statgen/verifyBamId/releases/tags/v1.1.2>
- <https://github.com/samtools/samtools/releases/download/1.2/samtools-1.2.tar.bz2>
- https://sourceforge.net/projects/bio-bwa/files/bwakit/bwakit-0.7.12_x64-linux.tar.bz2
- <https://github.com/lh3/bwa> (source code)

GRCh37 genome reference source:

ftp://ftp.1000genomes.ebi.ac.uk/vol1/ftp/technical/reference/phase2_reference_assembly_sequence/hs37d5.fa.gz

(Note that the original 1000 Genomes .fasta file is rzip compressed. For use with the current version of samtools, this file must be expanded and (optionally) re-compressed with bgzip to support the current samtools faidx indexing.)

The two sequence quality criteria we use in order to pass sequence data on for joint variant discovery and genotyping are: estimated DNA sample contamination below 3%, and fraction of the genome covered at least 10x 95% or above. DNA sample contamination is estimated from the sequencing center read mapping using software verifyBamId (Goo Jun, et al. (2012) Detecting and estimating contamination of human DNA samples in sequencing and array based genotype data. American Journal of Human Genetics, v.91, n.5, pp.839-848).

The IRC-harmonized BAM files and the original BAM files from the Sequencing Centers are deposited in the NCBI Sequence Read Archive, where they are stored in '.sra' format. These files can be accessed by approved users through the dbGaP "Run Selector". Note that the two different read mappings (IRC-harmonized versus Sequencing Center) can be distinguished in the Run Selector by the column "Alignment Provider". Users download .sra files using the SRA ToolKit. Each sample is identified to the toolkit with an ID starting with "SRR", which can be matched with the sample ID (NWD ID) using the dbGaP Run Selector. Users can request all data for a sample, or just a specific region of the

genome, and easily convert from SAM back to BAM format using samtools. The SRA ToolKit documentation includes an example of how to create a BAM file for a specified genomic region for a given sample.

- SRA ToolKit setup: https://trace.ncbi.nlm.nih.gov/Traces/sra/sra.cgi?view=toolkit_doc&f=std
- SRA ToolKit .sra to .bam for specified region:
https://trace.ncbi.nlm.nih.gov/Traces/sra/sra.cgi?view=toolkit_doc&f=sam-dump
- samtools: <http://www.htslib.org/>

Variant Discovery and Genotype Calling

Overview

The genotype call sets provided for the dbGaP accessions released in April 2017 are from “freeze 4” of the variant calling pipeline performed by the TOPMed Informatics Research Center (Center for Statistical Genetics, University of Michigan, Hyun Min Kang, Tom Blackwell and Gonçalo Abecasis). The software tools used in this version of the pipeline are available in the following repository: https://github.com/statgen/topmed_freeze4_calling. The following description refers to specific components of the pipeline. The variant calling software tools are under active development; updated versions can be accessed at <http://github.com/atks/vt> or <http://github.com/hyunminkang/apigenome>.

Outline of the variant calling procedure

The GotCloud vt pipeline detects variant sites and calls genotypes from a list of aligned sequence reads. Specifically, the pipeline consists of the following six key steps (see also the Figure). Most of these procedure will be integrated into GotCloud software package.

1. Variant detection: For each sequenced genome (in BAM/CRAMs), candidate variants are detected by vt discover2 software tools, separated by each chromosome. The candidate variants are normalized by vt normalize algorithm.
2. Variant consolidation: For each chromosome, the called variant sites are merged across the genomes, accounting for overlap of variants between genomes, using vt consolidate software tool.
3. Genotype and feature collection: For each 100kb chunk of genome, the genotyping module implemented in vt joint_genotype_sequential collects individual genotypes and variant features across the merged sites by iterating over sequenced genomes, focusing on the selected region.
4. Variant filtering: We use the inferred pedigree of related and duplicated samples to calculate Mendelian consistency statistics using vt milk-filter, and to train a variant quality classifier using a Support Vector Machine (SVM) implemented in the libsvm software package.

Steps to prepare input files, install software and perform variant calling

To produce variant calls using this pipeline, the following input files need to be prepared:

1. Aligned sequenced reads in BAM or CRAM format. Each BAM and CRAM file should contain one sample per subject. It also must be indexed using samtools index or equivalent software tools.
2. A sequence index file. Each line should contain [Sample ID] [Full Path to the BAM/CRAM file] [Contamination Estimates -- put zero if unknown]. See data/trio_data.index for example.

3. A pedigree file of nuclear families and duplicates in PED format. The pedigree file should contain only nuclear families. When a sample is duplicated, all Sample IDs representing the same individual (in the 2nd column) need to be presented in a comma-separated way. In the 3rd and 4th column to represent their parents, only a representative sample ID is required. See data/trio_data.ped for example.

To clone and build the repository, follow these steps

```
$ git clone https://github.com/statgen/topmed_freeze4_calling.git
```

```
$ cd topmed_freeze4_calling
```

```
$ make # or make -j [numjobs] to expedite the process
```

```
$ wget ftp://anonymous@share.sph.umich.edu/gotcloud/ref/hs37d5-db142-v1.tgz # this will take a while
```

```
$ tar xzvf hs37d5-db142-v1.tgz
```

```
$ rm hs37d5-db142-v1.tgz
```

After these steps, modify scripts/gcconfig.pm to specify input data files or other parameters. Modifying the first section (index and ped file in particular) should be minimally required changes.

To perform variant discovery and consolidation, run the following step

```
$ perl scripts/step1-detect-and-merge-variants.pl [whitespace separated chromosome names to call]
```

After this step, follow the instruction to run `make -f [Makefile] -j [numjobs]` to complete the discovery tasks.

To genotype variants, run the following steps.

```
$ perl scripts/step2-joint-genotyping.pl [whitespace separated chromosome names to call]
```

After this step, following the instruction to run `make -f [Makefile] -j [numjobs]` to complete the genotyping tasks

To call X chromosome genotypes, the sex information is inferred by running the following steps

```
$ perl scripts/step2b-calc-sum-depth.pl
```

```
$ perl scripts/step2c-infer-sex.pl
```

After each step, following the instruction to run `make -f [Makefile] -j [numjobs]` to complete inferring sex.

To call chrX genotypes, run the following step.

```
$ perl scripts/step2x-joint-genotyping.pl X
```

To perform variant filtering using pedigree information, follow these steps.

```
$ perl scripts/step3a-compute-milk-score.pl [whitespace separated chromosome names to call] ## run makefile after this step
```

```
$ perl scripts/step3b-run-svm-milk-filter.pl [whitespace separated chromosome names to call]
```

```
$ perl scripts/step3c-run-milk-transfer.pl [whitespace separated chromosome names to call] ## this step is needed only when performing transfer learning from other chromosomes.
```

After all these steps, the called variant sites will be available at `$(OUTPUT_DIR)/svm`, and the genotypes will be available at `$(OUTPUT_DIR)/paste`.

For calling chrX, run the following step additionally

```
$ perl scripts/step3c-run-milk-transfer.pl X
```

Variant Detection

Variant detection from each sequenced (and aligned) genome is performed by vt discover2 software tool. The script step-1-detect-variants.pl provides a means to automate the variant detection across a large number of sequenced genomes.

The variant detection algorithm considers a variant as a potential candidate variant if there exists a mismatch between the aligned sequence reads and the reference genome. Because such a mismatch can easily occur by random errors, only potential candidate variants passing the following criteria are considered to be candidate variants in the next steps.

1. At least two identical evidences of variants must be observed from aligned sequence reads.
 - Each individual evidence will be normalized using the normalization algorithm implemented in vt normalize software tools.
 - Only evidence from the reads with mapping quality 20 or greater will be considered.
 - Duplicate reads, QC-failed reads, supplementary reads, secondary reads will be ignored.
 - Evidence of a variant within overlapping fragments of read pairs will not be double counted. Either end of the overlapping read pair will be soft-clipped using bam clipOverlap software tool.
2. Assuming per-sample heterozygosity of 0.1%, the posterior probability of having a variant at the position should be greater than 50%. This method is equivalent to how the glfSingle model is described.

The variant detection step is required only once per sequenced genome, when multiple freezes of variant calls are produced over the course of time.

Variant Consolidation

Variants detected from the discovery step are merged across all samples. This step is implemented in the step-2-detect-variants.pl scripts.

1. The non-reference alleles normalized by vt normalize algorithm are merged across the samples, and unique alleles are printed as biallelic candidate variants. The algorithm is published.
2. If there are alleles overlapping with other SNPs and Indels, overlap_snp and overlap_indel filters are added in the FILTER column of the corresponding variant.
3. If there are tandem repeats with 2 or more repeats with total repeat length of 6bp or longer, the variant is annotated as a potential VNTR (Variant Number Tandem Repeat), and overlap_vntr filters are added to the variant overlapping with the repeat track of the putative VNTR.

Variant Genotyping and Feature Collection

The genotyping step iterates all of the merged variant site over the sequenced samples. It iterates over BAM/CRAM files one at a time sequentially for each 1Mb chunk to perform contamination-adjusted genotyping and annotation of variant features for filtering. The following variant features are calculated during the genotyping procedure.

- AVGDP : Average read depth per sample
- AC : Non-reference allele count

- AN : Total number of alleles
- GC : Genotype count
- GN : Total genotype counts
- HWEAF : Allele frequency estimated from PL under HWE
- HWD AF : Genotype frequency estimated from PL under HWD
- IBC : $[\text{Obs}(\text{Het}) - \text{Exp}(\text{Het})] / \text{Exp}[\text{Het}]$
- IS_IBC : $[\text{Obs}(\text{Het}) - \text{Exp}(\text{Het})] / \text{Exp}[\text{Het}]$ after correcting for population structure
- HWE_SLP : $-\log(\text{HWE likelihood-ratio test p-value}) \times \text{sign}(\text{IBC})$
- IS_HWE_SLP : $-\log(\text{HWE score test p-value after correcting for population structure}) \times \text{sign}(\text{IS_IBC})$
- ABE : Average fraction [#Ref Allele] across all heterozygotes
- ABZ : Z-score for testing deviation of ABE from expected value (0.5)
- BQZ: Z-score testing association between allele and base qualities
- CYZ: Z-score testing association between allele and the sequencing cycle
- STZ : Z-score testing association between allele and strand
- NMZ : Z-score testing association between allele and per-read mismatches
- IOR : $\log [\text{Obs}(\text{non-ref, non-alt alleles}) / \text{Exp}(\text{non-ref, non-alt alleles})]$
- NM1 : Average per-read mismatches for non-reference alleles
- NM0 : Average per-read mismatches for reference alleles

The genotyping is done with adjustment for potential contamination. It uses adjusted genotype likelihood similar to the published method, but does not use estimated population allele frequency for the sake of computational efficiency. It conservatively assumes that the probability of observing a non-reference read given a homozygous reference genotype is equal to half of the estimated contamination level, (or 1%, whichever is greater). The probability of observing a reference read given a homozygous non-reference genotype is calculated in a similar way. This adjustment makes the heterozygous call more conservatively when the reference and non-reference allele reads are strongly imbalanced. For example, if 45 reference alleles and 5 non-reference alleles are observed at Q40, the new method calls it as homozygous reference genotype while the original method ignoring potential contamination calls it as heterozygous genotype. This adjustment improves the genotype quality of contaminated samples by reducing genotype errors by several fold.

Variant Filtering

The variant filtering in TOPMed Freeze 3 were performed by (1) first calculating Mendelian consistency scores using known familial relatedness and duplicates, and (2) training SVM classifier between the known variant sites (positive labels) and the Mendelian inconsistent variants (negative labels).

The negative labels are defined if the Bayes Factor for Mendelian consistency quantified as $\text{Pr}(\text{Reads} | \text{HWE, Pedigree}) / \text{Pr}(\text{Reads} | \text{HWD, no Pedigree})$ is less than 0.001. Also a variant is marked as negative labels if 3 or more samples show 20% of non-reference Mendelian discordance within families or genotype discordance between duplicated samples. The positive labels are the SNPs found polymorphic either in the 1000 Genomes Omni2.5 array or in HapMap 3.3, with additional evidence of being polymorphic from the sequenced samples. Variants eligible to be marked with both positive and negative labels are discarded from the labels. The SVM scores trained and predicted by the libSVM software tool are annotated in the VCF file.

Two additional hard filters were applied.

- Excess heterozygosity filter (EXHET), if the Hardy-Weinberg disequilibrium p-value was less than $1e-6$ in the direction of excess heterozygosity. An additional ~3,900 variants were filtered out by this filter.
- Mendelian discordance filter (DISC), with 3 or more Mendelian inconsistencies or duplicate discordances observed from the samples. An additional ~370,000 variants were filtered out by this filter.

Functional annotation for each variant is provided in the INFO field using Pablo Cingolani's snpEff 4.1 with a GRCh37.75 database. The current release includes only hard-call genotypes in the VCF files, without genotype likelihoods and with no missing genotypes. Genotype likelihoods may be included in future releases, at the cost of approximately 100x greater file size.

Data Coordinating Center Methods

Cathy Laurie, Bruce Weir and Ken Rice

Genetic Analysis Center, Department of Biostatistics, University of Washington

The following three approaches were used to identify and resolve sample identity issues.

Concordance between annotated sex and biological sex inferred from the WGS data

Biological sex was inferred from normalized X and Y chromosome depth for each sample (i.e. divided by autosomal depth) and from X chromosome heterozygosity. A small number of sex mismatches were detected as annotated females with low X and high Y chromosome depth or annotated males with high X and low Y chromosome depth. These samples were either excluded from the sample set to be released on dbGaP or their sample identities were resolved using information from array comparisons or pedigree checks. We also identified a small number of sex chromosome aneuploidies (XXY, XXX and mosaics such as XX/XO), which are annotated in file accompanying the genotypes, which has the suffix "sex_chromosome_karyotypes.txt". This file provides the NWD ID, biological sex, and apparent sex chromosome karyotype of samples with inferred aneuploidies.

Concordance between prior SNP array genotypes and WGS-derived genotypes

Prior genome-wide SNP array data are available for 15 of the 19 accessions to be released in April 2017 (all except phs001024, phs001062, phs001032, and phs000997). The average percentage of individuals within the 15 accessions that have prior array data is 95%.

For six accessions, the prior array data analyzed for TOPMed were derived from 'fingerprints' compiled by dbGaP (Yumi Jin, see URL below). The fingerprints consist of genotypes from a set of 10,000 bi-allelic autosomal SNP markers chosen to occur on multiple commercial arrays and to have a minor allele frequency (MAF) $> 5\%$. For the remaining nine accessions, all autosomal SNPs with MAF $> 5\%$ on a genome-wide array were used. In both cases (fingerprints and full array), percent concordance was determined by matching on heterozygous versus homozygous status (rather than specific alleles) to avoid strand issues. Concordance percentages for array-WGS matches were generally in the high 90s, while those considered to be mismatches were in the 50-60% range (empirically determined to be the expected matching level for random pairs of samples). We found that 99.8% of the 14,412 WGS samples

tested were concordant with prior array data. Discordant samples were either excluded from the April 2017 release or resolved as sample switches using pedigree and/or sex-mismatch results.

SNP fingerprints: <http://www.ashg.org/2014meeting/abstracts/fulltext/f140122979.htm>

Comparisons of observed and expected relatedness from pedigrees

Kinship coefficients (KCs) were estimated for all pairs of individuals using ~250k single nucleotide variants that are autosomal, MAF >5%, and pruned to have low linkage disequilibrium ($r^2 < 0.1$) with one another. The estimation procedure used 'PC-Relate' (Conomos et al. 2016, DOI: 10.1016/j.ajhg.2015.11.022), which is robust to population structure, admixture and departures from Hardy-Weinberg Disequilibrium. The KC estimates were compared to those expected from pedigrees for the accessions with annotated family structure (phs000956, phs000974, phs000988, phs000964, phs000954 and phs001143). Discrepancies between observed and expected KCs were investigated and, in many cases, resolved either by correcting sample-subject mapping for sample switches or by making a change in the pedigree structure. Pedigree changes were warranted when one alteration resolved multiple KC discrepancies or when supported by additional information from the studies.

Hematology & Hemostasis TOPMed Working Group

Laura Almasy, Allison Ashley-Koch, Paul Auer, Emily Barron-Casella, Lewis Becker, John Blangero, Michael Bowers, Jennifer Brody, Pamela Burton, James Casella, Ming-Huei Chen, Michael Cho, Adolfo Correa, Paul de Vries, Qing Duan, John Eicher, Ugur Erickson, Nauder Faraday, James Floyd, Santhi Ganesh, Manjit Hanspal, Craig Hersh, Jennifer Huffman, Yao Hu, Deepti Jain, Nancy Jenny, Jill Johnsen, Andrew Johnson, Shannon Kelly, Malgorzata Klauzinska, Barbara Konkle, Charles Kooperberg, Jacquelyn Lane, Leslie Lange, Ethan Lange, Cathy Laurie, Cecelia Laurie, Grace Lee, Guillaume Lettre, David Levine, Joshua Lewis, Yun Li, Bingshan Li, Rasika Mathias, Braxton Mitchell, Elizabeth Mollica, Alanna C Morrison, Rakhi Naik, Deborah Nickerson, Jeff O'Connell, Christopher O'Donnell, Nathan Pankratz, Linda Polfus, Bruce Psaty, Laura Raffield, Alex Reiner, Erin Rice, Stephen Rich, Shabnam Salimi, Jenny Schoenberg, Nicholas Smith, Ci Song, Adrienne Stilp, Hua Tang, Margaret Taub, Marilyn Telen, Timothy A. Thornton, Russell Tracy, Kate Wehr, Ellen Werner, Marsha Wheeler, Ann Whitney, James Wilson, Lisa Yanek, Yu-Chung Yang, Xiuwen Zheng

TOPMed External Collaborators List by Institution

<u>Name</u>	Institution	E-mail	Group	Role
Burk, Robert	Albert Einstein College of Medicine	robert.burk@einstein.yu.edu	HCHS_SOL	Investigator
Chai, Jin Choul	Albert Einstein College of Medicine	jin.chai@einstein.yu.edu	HCHS_SOL	Investigator
Isasi, Carmen	Albert Einstein College of Medicine	carmen.isasi@einstein.yu.edu	HCHS_SOL	Investigator
Jorge, Kizer	Albert Einstein College of Medicine	jorge.kizer@einstein.yu.edu	HCHS_SOL	Investigator
Kaplan, Robert	Albert Einstein College of Medicine	Robert.Kaplan@einstein.yu.edu	HCHS_SOL	PI
Moon, Jee-Young	Albert Einstein College of Medicine	jee-young.moon@einstein.yu.edu	HCHS_SOL	Investigator
Qi, Qibin	Albert Einstein College of Medicine	qibin.qi@einstein.yu.edu	HCHS_SOL	Investigator
Rastogi, Deepa	Albert Einstein College of Medicine	drastogi@montefiore.org	HCHS_SOL	Investigator
Smoller, Sylvia	Albert Einstein College of Medicine	sylvia.smoller@einstein.yu.edu	WHI	Investigator
Spivack, Simon	Albert Einstein College of Medicine	simon.spivack@einstein.yu.edu	HCHS_SOL	Investigator
Wang, Tao	Albert Einstein College of Medicine	tao.wang@einstein.yu.edu	HCHS_SOL	Investigator
Mendelson, Michael	Boston Children's Hospital	Michael.mendelson@cardio.chboston.org	FHS	Investigator
Ballantyne, Christie	Baylor College of Medicine	cmb@bcm.edu	VTE	Investigator
Flanagan, Jonathan Michael	Baylor College of Medicine	jmfelanag@bcm.edu	PharmHU	Investigator
Leal, Suzanne	Baylor College of Medicine	sleal@bcm.edu	Northwest Genomics Center	Investigator
Sabo, Aniko	Baylor College of Medicine	sabo@bcm.edu	VTE	Investigator
Sheehan, Vivien	Baylor College of Medicine	vsheehan@bcm.edu	PharmHU	Co-PI
Sumazin, Pavel	Baylor College of Medicine	Pavel.Sumazin@bcm.edu	PharmHU	Investigator
Summarell, Carly	Baylor College of Medicine	Carly.Summarell@bcm.edu	PharmHU	Investigator
Zorman, Barry	Baylor College of Medicine	Barry.Zorman@bcm.edu	PharmHU	Investigator
Doddapaneni, Harsha	Baylor College of Medicine Human Genome Sequencing Center	doddapan@bcm.edu	BCMHGSC	Investigator
Dugan-Perez, Shannon	Baylor College of Medicine Human Genome Sequencing Center	sdugan@bcm.edu	BCMHGSC	Investigator
Gibbs, Richard	Baylor College of Medicine Human Genome Sequencing Center	agibbs@bcm.edu	BCMHGSC	PI
Metcalf, Ginger	Baylor College of Medicine Human Genome Sequencing Center	metcalf@bcm.edu	BCMHGSC	Investigator
Muzny, Donna	Baylor College of Medicine Human Genome Sequencing Center	donnam@bcm.edu	BCMHGSC	Investigator
Salerno, William	Baylor College of Medicine Human Genome Sequencing Center	William.Salerno@bcm.edu	BCMHGSC	Investigator
Gerszten, Robert	Beth Israel Deaconess Medical Center	rgerszte@bidmc.harvard.edu	JHS	Investigator
Ngo, Debby	Beth Israel Deaconess Medical Center	dngo@bidmc.harvard.edu	JHS	Investigator
Levasseur, Dana	Bioverativ	dana.levasseur@bioverativ.com	MLOF	Investigator
Busch, Michael	Blood Systems Research Institute UCSF	mbusch@bloodsystems.org	REDS-III_Brazil	Investigator
Cintho Ozahata, Mina	Blood Systems Research Institute UCSF	MCinthosOzahata@bloodsystems.org	REDS-III_Brazil	Investigator
Custer, Brian	Blood Systems Research Institute UCSF	bcuster@bloodsystems.org	REDS-III_Brazil	PI
Deng, Xutao	Blood Systems Research Institute UCSF	xdeng@bloodsystems.org	REDS-III_Brazil	Investigator
Kelly, Shannon	Blood Systems Research Institute UCSF	skelly1@bloodsystems.org	REDS-III_Brazil	Co-PI
Huston, Haley	Blood Works Northwest	HaleyH@BloodworksNW.org	MLOF	Investigator
Johnsen, Jill	Blood Works Northwest	JJohnsen@uw.edu	MLOF	Co-PI
Konkle, Barbara	Blood Works Northwest	BarbaraK@BloodworksNW.org	MLOF	PI
Ruuska, Sarah	Blood Works Northwest	SarahRu@BloodworksNW.org	MLOF	Investigator
Bodea, Corneliu	Brigham & Women's Hospital	CBODEA@mgh.harvard.edu	CFS	Investigator
Cade, Brian	Brigham & Women's Hospital	bcade@bwh.harvard.edu	CFS	Investigator
Chasman, Daniel	Brigham & Women's Hospital	DCHASMAN@research.bwh.harvard.edu	AFGen	Investigator
Cho, Michael	Brigham & Women's Hospital	michael.cho@channing.harvard.edu	COPD, CRA_CAMP	Investigator
Chun, Sung	Brigham & Women's Hospital	sgchun@research.bwh.harvard.edu	CFS	Investigator

<u>Name</u>	<u>Institution</u>	<u>E-mail</u>	<u>Group</u>	<u>Role</u>
DeMeo, Dawn	Brigham & Women's Hospital	dawn.demeo@channing.harvard.edu	COPD	Investigator
Farnam, Leanna	Brigham & Women's Hospital	reléf@channing.harvard.edu	COPD	Investigator
Gleason, Kevin	Brigham & Women's Hospital	KGLEASON1@PARTNERS.ORG	CFS	Investigator
Gottlieb, Daniel	Brigham & Women's Hospital	DJGOTTLIEB@PARTNERS.ORG	FHS	Investigator
Hersh, Craig	Brigham & Women's Hospital	recph@channing.harvard.edu	COPD	Investigator
Hobbs, Brian	Brigham & Women's Hospital	rebdb@channing.harvard.edu	COPD	Investigator
Kachroo, Priyadarshini	Brigham & Women's Hospital	reprk@channing.harvard.edu	CRA_CAMP	Investigator
Kaufman, Laura	Brigham & Women's Hospital	Laura.Kaufman@channing.harvard.edu	COPD	Investigator
LeBoff, Meryl	Brigham & Women's Hospital	MLEBOFF@bwh.harvard.edu	WHI	Investigator
Lee, Jiwon	Brigham & Women's Hospital	jlee250@bwh.harvard.edu	CFS	Investigator
Manson, JoAnn	Brigham & Women's Hospital	jmanson@rics.bwh.harvard.edu	WHI	Investigator
Parker, Margaret	Brigham & Women's Hospital	rempa@channing.harvard.edu	COPD	Investigator
Philippakis, Anthony	Brigham & Women's Hospital	aphilipp@broadinstitute.org	Broad	Investigator
Qiao, Dandi	Brigham & Women's Hospital	redaq@channing.harvard.edu	COPD	Investigator
Redline, Susan	Brigham & Women's Hospital	sredline1@rics.bwh.harvard.edu	CFS, MESA	PI, Investigator
Rueschman, Michael	Brigham & Women's Hospital	mrueschman@partners.org	CFS	Investigator
Sakornsakolpat, Phuwanat	Brigham & Women's Hospital	repsa@channing.harvard.edu	COPD	Investigator
Sanders, Jason L.	Brigham & Women's Hospital	JSANDERS2@partners.org	COPD	Investigator
Saxena, Richa	Brigham & Women's Hospital	RSAXENA@PARTNERS.ORG	CFS	Investigator
Silverman, Edwin	Brigham & Women's Hospital	ed.silverman@channing.harvard.edu	COPD	PI
Sofer, Tamar	Brigham & Women's Hospital	tsofer@bwh.harvard.edu	CFS, HCHS_SOL	Investigator
Su, Jessica Lasky	Brigham & Women's Hospital	rejas@channing.harvard.edu	CRA_CAMP	Investigator
Sunyaev, Shamil R	Brigham & Women's Hospital	ssunyaev@rics.bwh.harvard.edu	CFS	Investigator
Sylvia, Jody	Brigham & Women's Hospital	rejms@channing.harvard.edu	COPD	Investigator
Wan, Emily	Brigham & Women's Hospital	emily.wan@channing.harvard.edu	COPD	Investigator
Wang, Heming	Brigham & Women's Hospital	hwang@bwh.harvard.edu	CFS	Investigator
Weiss, Scott	Brigham & Women's Hospital	scott.weiss@channing.harvard.edu	CRA_CAMP	PI
Wilson, Carla	Brigham & Women's Hospital	WilsonC@NJHealth.org	COPD	Investigator
Aguet, Francois	The Broad Institute	francois@broadinstitute.org	Broad	Investigator
Anderson, Christopher D.	The Broad Institute	CDANDERSON@PARTNERS.ORG	Broad	Investigator
Ardlie, Kristin	The Broad Institute	kardlie@broadinstitute.org	Broad	Investigator
Avila-Pacheco, Julian	The Broad Institute	jrvilap@broadinstitute.org	Broad	Investigator
Banks, Eric	The Broad Institute	ebanks@broadinstitute.org	Broad	Investigator
Bick, Alexander	The Broad Institute	ABICK@MGH.HARVARD.EDU	Broad	Investigator
Bodea, Corneliu	The Broad Institute	CBODEA@mgh.harvard.edu	CFS	Investigator
Chaffin, Mark	The Broad Institute	chaffin@broadinstitute.org	AFGen	Investigator
Choi, Seung Hoan	The Broad Institute	schoi@broadinstitute.org	AFGen	Investigator
Claussnitzer, Melina	The Broad Institute	melina@broadinstitute.org	Broad	Investigator
Clish, Clary	The Broad Institute	clary@broadinstitute.org	Broad	Investigator
Flannick, Jason	The Broad Institute	flannick@broadinstitute.org	FHS	Investigator
Francioli, Laurent	The Broad Institute	lfran@broadinstitute.org	Broad	Investigator
Gabriel, Stacey	The Broad Institute	stacey@broadinstitute.org	Broad	PI
Ganna, Andrea	The Broad Institute	aganna@broadinstitute.org	Broad	Investigator
Gupta, Namrata	The Broad Institute	namrata@broadinstitute.org	Broad	Investigator
Handsaker, Bob	The Broad Institute	handsake@broadinstitute.org	Broad, JHS	Investigator
Hirschhorn, Joel	The Broad Institute	joelh@broadinstitute.org	Broad	Investigator
Kathiresan, Sekar	The Broad Institute	sekar@broadinstitute.org	Broad	Investigator
Khera, Amit	The Broad Institute	avkhera@broadinstitute.org	Broad	Investigator
Kourkoulis, Christina	The Broad Institute	CKOURKOULIS@PARTNERS.ORG	Broad	Investigator
Larsson, Katie	The Broad Institute	hatfield@broadinstitute.org	Broad	Investigator
Luo, Yang	The Broad Institute	yangluo@broadinstitute.org	JHS	Investigator
Majarjan, Timothy	The Broad Institute	tmajaria@broadinstitute.org	FHS	Investigator
Manning, Alisa	The Broad Institute	amanning@broadinstitute.org	Broad, FHS	Investigator
Margolin, Lauren	The Broad Institute	laurenm@broadinstitute.org	AFGen, Broad	Investigator
McCarroll, Steve	The Broad Institute	mccarroll@genetics.med.harvard.edu	Broad, JHS	Investigator
Natarajan, Pradeep	The Broad Institute	pradeep@broadinstitute.org	Broad	Investigator
Neale, Benjamin	The Broad Institute	bneale@broadinstitute.org	Broad	Investigator
Pampana, Akhil	The Broad Institute	apampana@broadinstitute.org	Broad	Investigator
Patel, Aniruddh	The Broad Institute	aniruddh@broadinstitute.org	Broad	Investigator
Patterson, Candace	The Broad Institute	candace@broadinstitute.org	Broad	Investigator
Philippakis, Anthony	The Broad Institute	aphilipp@broadinstitute.org	Broad	Investigator
Raychaudhuri, Soumya	The Broad Institute	soumya@broadinstitute.org	JHS	Investigator
Roselli, Carolina	The Broad Institute	aroselli@broadinstitute.org	AFGen	Investigator

Name	Institution	E-mail	Group	Role
Sallari, Richard	The Broad Institute	sallari@broadinstitute.org	Broad	Investigator
Saxena, Richa	The Broad Institute	RSAXENA@PARTNERS.ORG	CFS	Investigator
Wong, Alicia	The Broad Institute	alitang@broadinstitute.org	Broad	Investigator
Zekavat, Maryam	The Broad Institute	mzekavat@broadinstitute.org	Broad	Investigator
Bostom, Andrew	Brown University	andrew_g_bostom@brown.edu	WHI	Investigator
Chan, Kei Hang Katie	Brown University	kei_hang_chan@brown.edu	JHS, WHI	Investigator
Eaton, Charles	Brown University	Charles_eaton@brown.edu	WHI	Investigator
Fleck, Katherine	Brown University	Katherine_Fleck@brown.edu	SAS	Investigator
Lin, Xiaochen	Brown University	xiaochen_lin@brown.edu	SAS	Investigator
Liu, Simin	Brown University	simin_liu@brown.edu	JHS, SAS, WHI	Investigator
Liu, Qing	Brown University	qing_liu@brown.edu	SAS	Investigator
McGarvey, Stephen	Brown University	stephen_mcgarvey@brown.edu	SAS	PI
Messerlian, GERALYN	Brown University	GMesserlian@wihri.org	SAS	Investigator
Andersson, Charlotte	Boston University	ca@heart.dk	FHS	Investigator
Arruda, Heather	Boston University	harruda@bu.edu	FHS	Investigator
Beiser, Alexa	Boston University	alexab@bu.edu	FHS	Investigator
Benjamin, Emelia	Boston University	emelia@bu.edu	AFGen, FHS	Investigator
Cupples, L Adrienne	Boston University	adrienne@bu.edu	DCC, FHS	Investigator, Co-PI
Demissie, Serkalem	Boston University	demissie@bu.edu	FHS	Investigator
DeStefano, Anita	Boston University	adestef@bu.edu	FHS	Investigator
Dupuis, Josee	Boston University	dupuis@bu.edu	FHS	Investigator
Fetterman, Jessica	Boston University	jefetter@bu.edu	FHS	Investigator
Gottlieb, Daniel	Boston University	DJGOTTLIEB@PARTNERS.ORG	FHS	Investigator
Heard-Costa, Nancy	Boston University	nheard@bu.edu	FHS	Investigator
Ko, Darae	Boston University	daraeko@bu.edu	FHS	Investigator
Larson, Martin	Boston University	mlarson@bu.edu	FHS	Investigator
Lent, Samantha	Boston University	lent@bu.edu	FHS	Investigator
Lim, Elise	Boston University	elise625@bu.edu	FHS	Investigator
Lin, Honghuang	Boston University	hlin@bu.edu	FHS	Investigator
Liu, Chunyu	Boston University	liuc@bu.edu	FHS	Investigator
Liu, Ching-Ti	Boston University	ctliu@bu.edu	FHS	Investigator
Long, Michelle	Boston University	michelle.long@bmc.org	FHS	Investigator
Lunetta, Kathryn	Boston University	klunetta@bu.edu	AFGen	Investigator
Murabito, Joanne	Boston University	murabito@bu.edu	FHS	Investigator
O'Connor, George	Boston University	goconnor@bu.edu	FHS	Investigator
Peloso, Gina	Boston University	gpeloso@bu.edu	JHS	Investigator
Pitsillides, Achilleas	Boston University	anp4r@bu.edu	FHS	Investigator
Ramachandran, Vasanth	Boston University	vasan@bu.edu	FHS	PI
Sarnowski, Chloé	Boston University	chloesar@bu.edu	FHS	Investigator
Satizabal, Claudia	Boston University	clausati@bu.edu	FHS	Investigator
Seshadri, Sudha	Boston University	suseshad@bu.edu	FHS	Investigator
Wang, Biqi Becky	Boston University	wangbiqi@bu.edu	AFGen	Investigator
Wu, Peitao	Boston University	peitaowu@bu.edu	FHS	Investigator
Xu, Hanfei	Boston University	hfxu@bu.edu	FHS	Investigator
Yang, Qiong	Boston University	qyang@bu.edu	FHS	Investigator
Yin, Xiaoyan	Boston University	xyin@bu.edu	FHS	Investigator
Huffman, Jennifer	Boston VA Healthcare System	Jennifer.Huffman2@va.gov	FHS	Investigator
Nugent, Diane	Center for Inherited Blood Disorders	dnugent@c3dibd.org	MLOF	Investigator
He, Karen	Case Western Reserve University	kyh9@case.edu	CFS	Investigator
Liang, Jingjing	Case Western Reserve University	jxl236@case.edu	CFS	Investigator
Williams, Scott	Case Western Reserve University	smw154@case.edu	Africa7K	Investigator
Zhu, Xiaofeng	Case Western Reserve University	xxz10@case.edu	CFS	Investigator
Barnard, John	Cleveland Clinic	barnarj@ccf.org	AFGen	Investigator
Chung, Mina	Cleveland Clinic	chungm@ccf.org	AFGen	Investigator
Clemenceau, Jean Rene	Cleveland Clinic	clemenj@ccf.org	AFGen	Investigator
Comhair, Suzy	Cleveland Clinic	comhais@ccf.org	SARP	Investigator
Erzurum, Serpil	Cleveland Clinic	erzurum@ccf.org	SARP	Investigator
Sun, Han Kevin	Cleveland Clinic	sunh@ccf.org	AFGen	Investigator
Wang, Fan	Cleveland Clinic	wangf2@ccf.org	AFGen	Investigator
Xu, Weiling	Cleveland Clinic	xuw@ccf.org	SARP	Investigator
Zein, Joe	Cleveland Clinic	ZEINJ@ccf.org	SARP	Investigator
Meeks, Shannon	Children's Healthcare of Atlanta	Shannon.Meeks@choa.org	MLOF	Investigator
Almasy, Laura	Children's Hospital of Philadelphia	almasy@mail.med.upenn.edu	SAFS	Investigator

Name	Institution	E-mail	Group	Role
Hakonarson, Hakon	Children's Hospital of Philadelphia	hakonarson@email.chop.edu	ATGC	Investigator
Sleiman, Patrick	Children's Hospital of Philadelphia	sleimanp@email.chop.edu	ATGC	Investigator
Goodarzi, Mark	Cedars Sinai	mark.goodarzi@cshs.org	MESA	Investigator
Jones, Michelle	Cedars Sinai	Michelle.Jones@cshs.org	MESA	Investigator
Barr, R. Graham	Columbia University	rgb9@columbia.edu	COPD, MESA	Investigator
Castro Diehl, Olga Cecilia	Columbia University	oc83@cumc.columbia.edu	MESA	Investigator
Green, Nancy	Columbia University	nsg11@cumc.columbia.edu	PharmHU	Investigator
Kiryuk, Krzysztof	Columbia University	kk473@columbia.edu	MESA	Investigator
Lederer, David	Columbia University	dl427@cumc.columbia.edu	MESA	Investigator
Mayeux, Richard	Columbia University	rpm2@cumc.columbia.edu	MESA	Investigator
Oelsner, Elizabeth	Columbia University	eco7@cumc.columbia.edu	MESA	Investigator
Shimbo, Daichi	Columbia University	ds2231@cumc.columbia.edu	JHS	Investigator
Smith, Benjamin	Columbia University	bs2723@cumc.columbia.edu	MESA	Investigator
Ashley-Koch, Allison	Duke University	allison.ashleykoch@duke.edu	OMG_SCD	PI
Garrett, Melanie	Duke University	melanie.kail@duke.edu	OMG_SCD	Investigator
Lee, Grace	Duke University	grace.lee@duke.edu	OMG_SCD	Investigator
Telen, Marilyn	Duke University	marilyn.telen@duke.edu	OMG_SCD	Co-PI
Johnston, Rich	Emory University	hjohns5@emory.edu	BAGS	Investigator
Meeks, Shannon	Emory University	Shannon.Meeks@choa.org	MLOF	Investigator
Phillips, Larry	Emory University	medlsp@emory.edu	WHI	Investigator
Qin, Zhaohui	Emory University	zhaohui.qin@emory.edu	BAGS	Investigator
Carlson, Chris	Fred Hutchinson Cancer Research Center	ccarlson@fredhutch.org	WHI	Investigator
Gass, Margery	Fred Hutchinson Cancer Research Center	margery@mgass.onmicrosoft.com	WHI	Investigator
Haessler, Jeff	Fred Hutchinson Cancer Research Center	jhaessle@whi.org	WHI	Investigator
Herndon, Megan	Fred Hutchinson Cancer Research Center	mskinner@whi.org	WHI	Investigator
Hu, Yao	Fred Hutchinson Cancer Research Center	yhu23@fredhutch.org	WHI	Investigator
Kooperberg, Charles	Fred Hutchinson Cancer Research Center	clk@fredhutch.org	WHI	PI
Liu, Jingmin	Fred Hutchinson Cancer Research Center	jliu@whi.org	WHI	Investigator
Peters, Ulrike	Fred Hutchinson Cancer Research Center	upeters@fredhutch.org	WHI	Investigator
Raftery, Dan	Fred Hutchinson Cancer Research Center	draftery@fredhutch.org	WHI	Investigator
Zhao, Lue Ping	Fred Hutchinson Cancer Research Center	lzhao@fredhutch.org	WHI	Investigator
Zubair, Niha	Fred Hutchinson Cancer Research Center	nzubair@fredhutch.org	WHI	Investigator
Bezerra, Marcos	Fundação de Hematologia e Hemoterapia de Pernambuco - Hemope	marcos.cbezerra@ufpe.br	Boston-Brazil_SCD	Investigator
Gazal, Steven	Harvard School of Public Health	sgazal@hsph.harvard.edu	JHS	Investigator
Lange, Christoph	Harvard School of Public Health	clange@hsph.harvard.edu	COPD, CRA_CAMP	Investigator
Lin, Xihong	Harvard School of Public Health	XLIN@hsph.harvard.edu	CFS	Investigator
Liu, Yaowu	Harvard School of Public Health	yaowuliu@hsph.harvard.edu	CFS	Investigator
Price, Alkes	Harvard School of Public Health	aprice@hsph.harvard.edu	JHS	Investigator
Kachroo, Priyadarshini	Harvard Medical School	reprk@channing.harvard.edu	CRA_CAMP	Investigator
Seidman, Christine	Harvard Medical School	cseidman@genetics.med.harvard.edu	PCGC_CHD	Co-PI
Seidman, Jonathan	Harvard Medical School	seidman@genetics.med.harvard.edu	PCGC_CHD	Investigator
Balick, Daniel	Harvard University	dbalick@research.bwh.harvard.edu	CFS	Investigator
Florez, Jose	Harvard University	JCFLOREZ@mgh.harvard.edu	FHS	Investigator
Hecker, Julian	Harvard University	rejhe@channing.harvard.edu	CRA_CAMP	Investigator
Hsu, Yi-Hsiang	Harvard University	YiHsiangHsu@hsl.harvard.edu	FHS	Investigator
Joehanes, Roby	Harvard University	RobyJoehanes@hsl.harvard.edu	FHS	Investigator
Karasik, David	Harvard University	karasik@hsl.harvard.edu	FHS	Investigator
Kiel, Douglas	Harvard University	kiel@hsl.harvard.edu	FHS	Investigator
Lahrouchi, Najim	Harvard University	NLAHROUCHI@mgh.harvard.edu	FHS	Investigator
Leong, Aaron	Harvard University	asleong@mgh.harvard.edu	FHS	Investigator
MacArthur, Daniel	Harvard University	macarthur@atgu.mgh.harvard.edu	Broad	Investigator
Manning, Alisa	Harvard University	amanning@broadinstitute.org	Broad, FHS	Investigator
Marini, Sandro	Harvard University	SMARINI1@mgh.harvard.edu	Broad	Investigator
McFarland, Sean	Harvard University	seanmacf@broadinstitute.org	Boston-Brazil_SCD	Investigator
Natarajan, Pradeep	Harvard University	pradeep@broadinstitute.org	Broad	Investigator
Newton-Cheh, Christopher	Harvard University	CNEWTONCHEH@mgh.harvard.edu	FHS	Investigator
Philippakis, Anthony	Harvard University	philipp@broadinstitute.org	Broad	Investigator
Porneala, Bianca	Harvard University	BPORNEALA@mgh.harvard.edu	FHS	Investigator
Prokopenko, Dmitry	Harvard University	redpr@channing.harvard.edu	COPD	Investigator
Sankaran, Vijay	Harvard University	sankaran@broadinstitute.org	Boston-Brazil_SCD	PI
Schoech, Armin	Harvard University	arminschoech@fas.harvard.edu	JHS	Investigator
Sharma, Amitabh	Harvard University	reash@channing.harvard.edu	CRA_CAMP	Investigator

Name	Institution	E-mail	Group	Role
Sohail, Mashaal	Harvard University	msohail@fas.harvard.edu	CFS	Investigator
Tsao, Connie	Harvard University	ctsao1@bidmc.harvard.edu	FHS	Investigator
Yau, Michelle	Harvard University	MichelleYau@hsl.harvard.edu	FHS	Investigator
Ziniti, John	Harvard University	john.ziniti@channing.harvard.edu	CRA_CAMP	Investigator
Kinyua Kamanu, Frederick	Hebrew Rehabilitation Center	FredrickKinyua@hsl.harvard.edu	FHS	Investigator
Gui, Hongsheng	Henry Ford Health System	hgui1@hfhs.org	ATGC	Investigator
Williams, L. Keoki	Henry Ford Health System	kwillia5@hfhs.org	ATGC	Co-PI
Xiao, Shujie	Henry Ford Health System	sxiao1@hfhs.org	ATGC	Investigator
Arking, Dan	Johns Hopkins University	arking@jhmi.edu	AFGen, VTE	Investigator
Avramopoulos, Dimitrios	Johns Hopkins University	adimitr1@jhmi.edu	SIT_SCD	Investigator
Barron-Casella, Emily	Johns Hopkins University	ebcasell@jhmi.edu	SIT_SCD	Investigator
Beaty, Terri	Johns Hopkins University	tbeaty@jhsp.edu	BAGS, COPD	Investigator
Becker, Diane	Johns Hopkins University	dbecker@jhmi.edu	GeneSTAR	Investigator
Becker, Lewis	Johns Hopkins University	lbecker@jhmi.edu	GeneSTAR	Investigator
Begum, Ferdouse	Johns Hopkins University	fbegum1@jhu.edu	COPD	Investigator
Casella, James	Johns Hopkins University	jasella@jhmi.edu	SIT_SCD	PI
Chakravarti, Aravinda	Johns Hopkins University	aravinda@jhmi.edu	VTE	Investigator
Faraday, Nauder	Johns Hopkins University	nfarada1@jhmi.edu	GeneSTAR	Investigator
Foster, Cassandra	Johns Hopkins University	cfoste16@jhmi.edu	BAGS	Investigator
Iyer, Kruthika Raman	Johns Hopkins University	kiyer4@jhu.edu	GeneSTAR	Investigator
Jones, Kimberly	Johns Hopkins University	kjones62@jhmi.edu	SIT_SCD	Investigator
Kalyani, Rita	Johns Hopkins University	rrastogi@jhmi.edu	GeneSTAR	Investigator
Keramati, Ali	Johns Hopkins University	akerama1@jhmi.edu	MESA	Investigator
Kottgen, Anna	Johns Hopkins University	akottge1@jhu.edu	VTE	Investigator
Kral, Brian	Johns Hopkins University	bkral@jhmi.edu	GeneSTAR	Investigator
Longchamps, Ryan	Johns Hopkins University	rlongch1@jhmi.edu	VTE	Investigator
Make, Barry	Johns Hopkins University	makeb@njhealth.org	COPD	Investigator
Maruther, Nisa	Johns Hopkins University	maruthur@jhmi.edu	VTE	Investigator
Mathias, Rasika	Johns Hopkins University	rmathias@jhmi.edu	BAGS, GeneSTAR	Investigator, PI
Naik, Rakhi	Johns Hopkins University	rakhi@jhmi.edu	JHS	Investigator
Nyquist, Paul	Johns Hopkins University	pnquis1@jhmi.edu	GeneSTAR	Investigator
Post, Wendy	Johns Hopkins University	wpost@jhmi.edu	MESA	Investigator
Ruczinski, Ingo	Johns Hopkins University	iruczins@jhsp.edu	BAGS	Investigator
Salzberg, Steven	Johns Hopkins University	salzberg@jhu.edu	BAGS	Investigator
Selvin, Elizabeth	Johns Hopkins University	eselvin@jhu.edu	VTE	Investigator
Taub, Margaret	Johns Hopkins University	mtaub@jhsp.edu	BAGS, GeneSTAR	Investigator
Tin, Adrienne	Johns Hopkins University	atin1@jhu.edu	VTE	Investigator
Vaidya, Dhananjay	Johns Hopkins University	d vaidya@jhmi.edu	GeneSTAR	Investigator
Yanek, Lisa	Johns Hopkins University	lryanek@jhmi.edu	GeneSTAR	Investigator
Nekhai, Sergei	Howard University	snekhai@Howard.edu	PUSH_SCD	PI
Oneal, Patricia	Howard University	poneal@Howard.edu	PUSH_SCD	Investigator
Rock, Angela	Howard University	a_rock@howard.edu	PUSH_SCD	Investigator
Salomon-Andonie, Juan	Howard University	juan.salomonandonie@Howard.edu	PUSH_SCD	Investigator
Taylor, Robert E	Howard University	rtaylor@Howard.edu	PUSH_SCD	Investigator
Taylor VI, James G.	Howard University	james.taylor2@howard.edu	PUSH_SCD	Investigator
Chami, Nathalie	Icahn School of Medicine at Mount Sinai	nathalie.chami@mssm.edu	BioMe	Investigator
Do, Ron	Icahn School of Medicine at Mount Sinai	ron.do@mssm.edu	BioMe	Investigator
Gelb, Bruce	Icahn School of Medicine at Mount Sinai	bruce.gelb@mssm.edu	PCGC_CHD	PI
Jordan, Daniel	Icahn School of Medicine at Mount Sinai	daniel.jordan1@mssm.edu	BioMe	Investigator
Kenny, Eimear	Icahn School of Medicine at Mount Sinai	eimear.kenny@mssm.edu	BioMe	Investigator
Loos, Ruth	Icahn School of Medicine at Mount Sinai	ruth.loos@mssm.edu	BioMe	PI
Moscatti, Arden	Icahn School of Medicine at Mount Sinai	arden.moscatti@mssm.edu	BioMe	Investigator
Nadkarni, Girish	Icahn School of Medicine at Mount Sinai	girish.nadkarni@mountsinai.org	BioMe	Investigator
Preuss, Michael	Icahn School of Medicine at Mount Sinai	Michael.preuss@mssm.edu	BioMe	Investigator
Verbanck, Marie	Icahn School of Medicine at Mount Sinai	marie.verbanck@mssm.edu	BioMe	Investigator
Zhou, Lisheng	Icahn School of Medicine at Mount Sinai	lisheng.zhou@mssm.edu	BioMe	Investigator
Seplyarskiy, Vladimir	Institute for Information Transmission Problems, Russia	vseplyarskiy@iitp.ru	CFS	Investigator
Defilippi, Christopher	Inova Health System	Christopher.Defilippi@inova.org	MESA	Investigator
Shah, Palak	Inova Health System	palak.shah@inova.org	MESA	Investigator
Aldred, Micheala	Indiana University	maaldred@iu.edu	SARP	Investigator
Nan, Hongmei	Indiana University	hnan@iu.edu	WHI	Investigator
Wessel, Jennifer	Indiana University	wesselj@iu.edu	FHS, MESA	Investigator

Name	Institution	E-mail	Group	Role
Yano, Yuichiro	Jichi Medical School, Japan	yyano@jichi.jp	JHS	Investigator
Chen, Yii-Der Ida	Los Angeles Biomedical Research Institute	ichen@labiomed.org	AA_CAC, MESA, THRV	Investigator, Co-PI
Cooper, Brigiddann	Los Angeles Biomedical Research Institute	Brigiddann.cooper@labiomed.org	MESA	Investigator
Guo, Xiuqing	Los Angeles Biomedical Research Institute	xguo@labiomed.org	AA_CAC, MESA, THRV	Investigator
Hai, Yang	Los Angeles Biomedical Research Institute	yhai@labiomed.org	MESA	Investigator
Hajek, Cassie	Los Angeles Biomedical Research Institute	Catherine.Hajek@SanfordHealth.org	MESA	Investigator
Kim, Eric	Los Angeles Biomedical Research Institute	erickim@labiomed.org	THRV	Investigator
Lauzon, Marie	Los Angeles Biomedical Research Institute	marie.lauzon@labiomed.org	MESA	Investigator
Li, Xiaohui	Los Angeles Biomedical Research Institute	xiaohuii@labiomed.org	MESA	Investigator
Lin, Henry	Los Angeles Biomedical Research Institute	hlin@labiomed.org	MESA	Investigator
Purves, Sandra	Los Angeles Biomedical Research Institute	spurves@labiomed.org	MESA	Investigator
Roll, Kathryn (Kaye)	Los Angeles Biomedical Research Institute	kroll@labiomed.org	AA_CAC, MESA, THRV	Investigator
Rotter, Jerome	Los Angeles Biomedical Research Institute	jrotter@labiomed.org	AA_CAC, MESA, THRV	PI, Investigator, Co-PI
Sandow, Kevin	Los Angeles Biomedical Research Institute	ksandow@labiomed.org	THRV	Investigator
Taylor, Kent	Los Angeles Biomedical Research Institute	ktaylor@labiomed.org	AA_CAC, MESA, THRV	Investigator, PI
Yao, Jie	Los Angeles Biomedical Research Institute	jyao@labiomed.org	AA_CAC, MESA	Investigator
Kramer, Holly	Loyola University	hkramer@lumc.edu	MESA	Investigator
Tayo, Bamidele	Loyola University	btayo@luc.edu	MESA	Investigator
Kumar, Rajesh	Lurie Children's Hospital of Chicago	rkumar@luriechildrens.org	ATGC	Investigator
Albert, Christine	Massachusetts General Hospital	CALBERT@mgh.harvard.edu	AFGen	Investigator
Benjamin, Emelia	Massachusetts General Hospital	emelia@bu.edu	AFGen, FHS	Investigator
Bodea, Corneliu	Massachusetts General Hospital	CBODEA@mgh.harvard.edu	CFS	Investigator
Chung, Jaeyoon	Massachusetts General Hospital	jchung22@mgh.harvard.edu	Broad	Investigator
Ellinor, Patrick	Massachusetts General Hospital	ellinor@mgh.harvard.edu	AFGen, FHS	Investigator, PI
Hall, Amelia Weber	Massachusetts General Hospital	AHALL22@mgh.harvard.edu	AFGen	Investigator
Lubitz, Steven	Massachusetts General Hospital	SLUBITZ@MGH.HARVARD.EDU	AFGen, FHS	Investigator
Manning, Alisa	Massachusetts General Hospital	amanning@broadinstitute.org	Broad, FHS	Investigator
Meigs, James	Massachusetts General Hospital	JMEIGS@mgh.harvard.edu	FHS	Investigator
Natarajan, Pradeep	Massachusetts General Hospital	pradeep@broadinstitute.org	Broad	Investigator
Newton-Cheh, Christopher	Massachusetts General Hospital	CNEWTONCHEH@mgh.harvard.edu	FHS	Investigator
Patel, Aniruddh	Massachusetts General Hospital	aniruddh@broadinstitute.org	Broad	Investigator
Saxena, Richa	Massachusetts General Hospital	RSAXENA@PARTNERS.ORG	CFS	Investigator
Weng, Lu-Chen	Massachusetts General Hospital	lcweng@mgh.harvard.edu	AFGen	Investigator
Armasu, Sebastian M.	Mayo Clinic	Armasu.Sebastian@mayo.edu	VTE	Investigator
Ashrani, Aneel	Mayo Clinic	Ashrani.Aneel@mayo.edu	VTE	Investigator
Coombes, Brandon	Mayo Clinic	coombes.brandon@mayo.edu	VTE	Investigator
de Andrade, Mariza	Mayo Clinic	mandrade@mayo.edu	HyperGEN_GENOA, VTE	Investigator
Sladek, Robert	McGill University	robert.sladek@mcgill.ca	FHS	Investigator
Broeckel, Ulrich	Medical College of Wisconsin	ubroeckel@mcw.edu	HyperGEN_GENOA	Investigator
Martin, Lisa	George Washington University	lwmartin@mfa.gwu.edu	WHI	Investigator
Du, Margaret	Memorial Sloan Kettering Cancer Center	dumeng@mskcc.org	WHI	Investigator
Foreman, Marilyn	Morehouse School of Medicine	mforeman@msm.edu	COPD	Investigator
Hao, Luning	NIH National Library of Medicine, National Center for Biotechnology Information	lhao@mail.nih.gov	NCBI	Investigator
Gaye, Amadou	NIH National Human Genome Research Institute	amadou.gaye@nih.gov	NHLBI Program	Investigator
Chen, Ming-Huei	NIH National Heart, Lung, and Blood Institute	ming-huei.chen@nih.gov	FHS	Investigator
Chen, Shu	NIH National Heart, Lung, and Blood Institute	shuhui.chen@nih.gov	NHLBI Program	Investigator
Chu, Audrey	NIH National Heart, Lung, and Blood Institute	audrey.chu@nih.gov	FHS	Investigator
Coady, Sean	NIH National Heart, Lung, and Blood Institute	coadys@nhlbi.nih.gov	NHLBI Program	Investigator
Eicher, John	NIH National Heart, Lung, and Blood Institute	john.eicher@nih.gov	FHS	Investigator
Fox, Caroline	NIH National Heart, Lung, and Blood Institute	foxca@nhlbi.nih.gov	FHS	Investigator
Garcia, Melissa	NIH National Heart, Lung, and Blood Institute	garciamel@mail.nih.gov	NHLBI Program	Investigator
Goff, David	NIH National Heart, Lung, and Blood Institute	david.goff@nih.gov	NHLBI Program	Investigator
Hanspal, Manjit	NIH National Heart, Lung, and Blood Institute	hanspal@csr.nih.gov	NHLBI Program	Investigator
Hwang, Shih-Jen	NIH National Heart, Lung, and Blood Institute	hwangs2@nhlbi.nih.gov	FHS	Investigator
Joehanes, Roby	NIH National Heart, Lung, and Blood Institute	RobyJoehanes@hsl.harvard.edu	FHS	Investigator

Name	Institution	E-mail	Group	Role
Johnson, Andrew	NIH National Heart, Lung, and Blood Institute	johnsonad2@nhlbi.nih.gov	FHS	Investigator
Klauzinska, Malgorzata	NIH National Heart, Lung, and Blood Institute	malgorzata.klauzinska@nih.gov	NHLBI Program	Investigator
Leerkes, Maarten	NIH National Heart, Lung, and Blood Institute	leerkesm@nhlbi.nih.gov	NHLBI Program	Investigator
Levy, Dan	NIH National Heart, Lung, and Blood Institute	LevyD@nih.gov	FHS	Investigator
Liu, Delong	NIH National Heart, Lung, and Blood Institute	liud2@mail.nih.gov	NHLBI Program	Investigator
Luo, James	NIH National Heart, Lung, and Blood Institute	luoja@mail.nih.gov	NHLBI Program	Investigator
Mensah, George	NIH National Heart, Lung, and Blood Institute	george.mensah@nih.gov	NHLBI Program	Investigator
O'Donnell, Christopher	NIH National Heart, Lung, and Blood Institute	Christopher.ODonnell@va.gov	FHS	Investigator
Olson, Jean L.	NIH National Heart, Lung, and Blood Institute	olsonj@nhlbi.nih.gov	MESA	Investigator
Peprah, Emmanuel	NIH National Heart, Lung, and Blood Institute	peprahek@nhlbi.nih.gov	NHGRI Program	Investigator
Rodríguez, Benjamin Andrew Thomas	NIH National Heart, Lung, and Blood Institute	benjamin.rodriguez@nih.gov	FHS	Investigator
Runko, Alexander	NIH National Heart, Lung, and Blood Institute	alexander.runko@nih.gov	NHLBI Program	Investigator
Schramm, Charlene	NIH National Heart, Lung, and Blood Institute	schrammc@nhlbi.nih.gov	NHLBI Program	Investigator
Silsbee, Lorraine	NIH National Heart, Lung, and Blood Institute	silsbeel@nhlbi.nih.gov	MESA, NHLBI Program	Investigator
Song, Ci	NIH National Heart, Lung, and Blood Institute	ci.song@nih.gov	FHS	Investigator
Srinivas, Pothur	NIH National Heart, Lung, and Blood Institute	srinivap@nhlbi.nih.gov	MESA, NHLBI Program	Investigator
Wei, Gina	NIH National Heart, Lung, and Blood Institute	weig@nhlbi.nih.gov	NHLBI Program	Investigator
Werner, Ellen	NIH National Heart, Lung, and Blood Institute	wernere@nhlbi.nih.gov	NHLBI Program	Investigator
Yang, Yu-Chung	NIH National Heart, Lung, and Blood Institute	yu-chung.yang@nih.gov	NHLBI Program	Investigator
Chang, I-Shou	National Health Research Institute Taiwan	ischang@nhri.org.tw	THRUV	Investigator
Chiu, Yen-Feng	National Health Research Institute Taiwan	yfchiu@nhri.org.tw	THRUV	Investigator
Chung, Ren-Hua	National Health Research Institute Taiwan	rchung@nhri.org.tw	THRUV	Investigator
Hsiung, Chao (Agnes)	National Health Research Institute Taiwan	hsiong@nhri.org.tw	MESA, THRUV	Investigator
Launer, Lenore	NIH National Institute on Aging	launerl@nia.nih.gov	CARDIA	Investigator
Beer, Rebecca	National Institutes of Health	rebecca.beer@nih.gov	NHLBI Program	Investigator
Felsenfeld, Adam	National Institutes of Health	Adam.Felsenfeld@nih.gov	NHGRI Program	Investigator
Feolo, Mike	National Institutes of Health	feolo@ncbi.nlm.nih.gov	NCBI	Investigator
Gan, Weiniu	National Institutes of Health	ganw2@nhlbi.nih.gov	NHLBI Program	Investigator
Jaquish, Cashell	National Institutes of Health	jaquishc@nhlbi.nih.gov	NHLBI Program	Investigator
Joehanes, Roby	National Institutes of Health	RobyJoehanes@hsl.harvard.edu	FHS	Investigator
Johnson, Lenora	National Institutes of Health	johnslen@nhlbi.nih.gov	NHLBI Directors Office	Investigator
Levy, Dan	National Institutes of Health	LevyD@nih.gov	FHS	Investigator
London, Stephanie	National Institutes of Health	london2@niehs.nih.gov	VTE	Investigator
Luo, James	National Institutes of Health	luoja@mail.nih.gov	NHLBI Program	Investigator
Mikulla, Julie	National Institutes of Health	julia.mikulla@nih.gov	NHLBI Program	Investigator
Minear, Mollie	National Institutes of Health	mollie.minear@nih.gov	NHLBI Directors Office	Investigator
Nelson, Cheryl	National Institutes of Health	nelsonc@nhlbi.nih.gov	NHLBI Program	Investigator
O'Sullivan, Christopher	National Institutes of Health	osulliva@ncbi.nlm.nih.gov	NCBI	Investigator
Ostell, Jim	National Institutes of Health	jim.ostell@nih.gov	NCBI	Investigator
Papanicolaou, George	National Institutes of Health	gjp@nhlbi.nih.gov	NHLBI Program	Investigator
Qasba, Pankaj	National Institutes of Health	qasbap@nhlbi.nih.gov	NHLBI Program	Investigator
Sherry, Steve	National Institutes of Health	sherry@ncbi.nlm.nih.gov	NCBI	Investigator
Sholinsky, Phylliss	National Institutes of Health	sholinsp@nhlbi.nih.gov	NHLBI Program	Investigator
Song, Ci	National Institutes of Health	ci.song@nih.gov	FHS	Investigator
Srinivas, Pothur	National Institutes of Health	srinivap@nhlbi.nih.gov	MESA, NHLBI Program	Investigator
Stine, Adam	National Institutes of Health	adam.stine@nih.gov	NCBI	Investigator
Sturcke, Anne	National Institutes of Health	anne.kiang@nih.gov	NCBI	Investigator
Thomson, Alastair	National Institutes of Health	alastair.thomson@nih.gov	NHLBI Program	Investigator
Xiao, Chunlin	National Institutes of Health	xiao2@ncbi.nlm.nih.gov	NCBI	Investigator
Yaschenko, Eugene	National Institutes of Health	yaschenk@ncbi.nlm.nih.gov	NCBI	Investigator
Bowler, Russell	National Jewish Health	BowlerR@NJHealth.org	COPD	Investigator

Name	Institution	E-mail	Group	Role
Crapo, James	National Jewish Health	crapoj@NJHealth.org	COPD	Investigator
Fingerlin, Tasha	National Jewish Health	fingerlint@njhealth.org	IPF	Co-PI
Penchev, Sara	National Jewish Health	PenchevS@NJHealth.org	COPD	Investigator
Regan, Elizabeth	National Jewish Health	ReganE@NJHealth.org	COPD	Investigator
Seibold, Max	National Jewish Health	SeiboldM@NJHealth.org	ATGC	Investigator
Zhao, Snow Xueyan	National Jewish Health	zhaox@njhealth.org	IPF	Investigator
Chang, Yi-Cheng	National Taiwan University	yichengchang@ntu.edu.tw	THRUV	Investigator
Chuang, Lee-Ming	National Taiwan University	leeming@ntu.edu.tw	MESA, THRUV	Investigator
Hou, Lifang	Northwestern University	l-hou@northwestern.edu	CARDIA	Investigator
Rasmussen-Torvik, Laura	Northwestern University	ljrtorvik@northwestern.edu	MESA	Investigator
Shah, Sanjiv	Northwestern University	sanjiv.shah@northwestern.edu	MESA	Investigator
VanWagner, Lisa	Northwestern University	lvw@northwestern.edu	CARDIA	Investigator
Zhang, Wei	Northwestern University	wei.zhang1@northwestern.edu	CARDIA	Investigator
Abhyankar, Avinash	New York Genome Center	avabhyankar@nygenome.org	New York Genome Center	Investigator
Bloom, Toby	New York Genome Center	tbloom@nygenome.org	New York Genome Center	Investigator
Corvelo, André	New York Genome Center	acorvelo@nygenome.org	New York Genome Center	Investigator
Germer, Soren	New York Genome Center	sgermer@nygenome.org	New York Genome Center	PI
Hubert, Benjamin	New York Genome Center	bhubert@NYGENOME.ORG	New York Genome Center	Investigator
Narzisi, Giuseppe	New York Genome Center	gnarzisi@nygenome.org	New York Genome Center	Investigator
Robine, Nicolas	New York Genome Center	nrobine@nygenome.org	New York Genome Center	Investigator
Smith, Tanja	New York Genome Center	Tsmith@nygenome.org	New York Genome Center	Investigator
Zody, Michael	New York Genome Center	mczody@nygenome.org	New York Genome Center	Investigator
Adrianto, Indra	Oklahoma Medical Research Foundation	Indra-Adrianto@omrf.org	Sarcoidosis	Investigator
Garman, Lori	Oklahoma Medical Research Foundation	Lori-Garman@omrf.org	Sarcoidosis	Investigator
Montgomery, Courtney	Oklahoma Medical Research Foundation	Courtney-Montgomery@omrf.org	Sarcoidosis	PI
Pezant, Nathan	Oklahoma Medical Research Foundation	Nathan-Pezant@omrf.org	Sarcoidosis	Investigator
Jackson, Rebecca	Ohio State University Wexner Medical Center	jackson.20@osu.edu	WHI	Investigator
Cheng, Susan	Partners.org	scheng3@PARTNERS.ORG	FHS	Investigator
Christophersen, Ingrid Elizabeth	Partners.org	ICHRISTOPHERSEN@partners.org	FHS	Investigator
Gleason, Kevin	Partners.org	KGLEASON1@PARTNERS.ORG	CFS	Investigator
Gottlieb, Daniel	Partners.org	DJGOTTLIEB@PARTNERS.ORG	FHS	Investigator
Hivert, Marie-France	Partners.org	MHIVERT@PARTNERS.ORG	FHS	Investigator
Naylor, Matt	Partners.org	MNAYOR@PARTNERS.ORG	FHS	Investigator
Purcell, Shaun	Partners.org	smpurcell@partners.org	CFS	Investigator
Rexrode, Kathryn	Partners.org	KREXRODE@partners.org	WHI	Investigator
Rosand, Jonathan	Partners.org	jrosand@partners.org	Broad	Investigator
Rueschman, Michael	Partners.org	mrueschman@partners.org	CFS	Investigator
Saxena, Richa	Partners.org	RSAXENA@PARTNERS.ORG	CFS	Investigator
Wang, Heming	Partners.org	hwang@bwh.harvard.edu	CFS	Investigator
Chen, Fang	Penn State University	fchen1@pennstatehealth.psu.edu	IRC	Investigator
Liu, Dajiang	Penn State University	dxl46@psu.edu	IRC	Investigator
McGuire, Daniel	Penn State University	dmcguire2@pennstatehealth.psu.edu	IRC	Investigator
Brambilla, Don	RTI International	dbrambilla@rti.org	REDS-III_Brazil	Investigator
Guo, Yuelong (John)	RTI International	jyguo@rti.org	REDS-III_Brazil	Investigator
Page, Grier	RTI International	gpage@rti.org	REDS-III_Brazil	Investigator
Assimes, Tim	Stanford University	tassimes@stanford.edu	WHI	Investigator
David, Sean	Stanford University	spdavid@stanford.edu	WHI	Investigator
Gignoux, Chris	Stanford University	cgignoux@stanford.edu	BAGS	Investigator
Perez, Marco	Stanford University	mvperez@stanford.edu	WHI	Investigator
Tang, Hua	Stanford University	huatang@stanford.edu	WHI	Investigator
Hale, Lauren	Stony Brook Medicine	lauren.hale@stonybrookmedicine.edu	WHI	Investigator
White, Wendy	Tougaloo College	wwhite@tougaloo.edu	JHS	Investigator
Chen, Carol	Tulane University	cchen1@tulane.edu	GenSalt	Investigator
He, Jiang	Tulane University	jhe@tulane.edu	GenSalt	PI
Kelly, Tanika	Tulane University	tkelly@tulane.edu	GenSalt	Investigator
Sun, Xiao	Tulane University	xsun10@tulane.edu	GenSalt	Investigator
Hsiao, Tzu-Hung	Taichung Veterans General Hospital Taiwan	thsiao@vghtc.gov.tw	THRUV	Investigator

Name	Institution	E-mail	Group	Role
Hwu, Chii Min	Taichung Veterans General Hospital Taiwan	chhwu@vghtpe.gov.tw	MESA, THRV	Investigator
Lee, I-Te	Taichung Veterans General Hospital Taiwan	itlee@vghtc.gov.tw	THRV	Investigator
Lee, Wen-Jane	Taichung Veterans General Hospital Taiwan	wjlee@vghtc.gov.tw	THRV	Investigator
Sheu, Wayne Hui-Heng	Taichung Veterans General Hospital Taiwan	whhsheu@mail.vghtc.gov.tw	MESA, THRV	Investigator
Aslibekyan, Stella	University of Alabama	saslibek@uab.edu	GOLDN	Investigator
Claas, Steven	University of Alabama	sclaas@uab.edu	GOLDN, HyperGEN_GENOA	Investigator
Hidalgo, Bertha	University of Alabama	bhidalgo@uab.edu	GOLDN	Investigator
Irvin, Marguerite Ryan	University of Alabama	irvnr@uab.edu	GOLDN, HyperGEN_GENOA	Investigator
McDonald, Merry-Lynn	University of Alabama	mmcdonald@uab.edu	COPD	Investigator
Muntner, Paul	University of Alabama	pmuntner@uab.edu	JHS	Investigator
Srinivasasainagendra, Vinodh	University of Alabama	vinodh@uab.edu	GOLDN, HyperGEN_GENOA	Investigator
Sundaresan, Aishwarya	University of Alabama	asundaresan@uab.edu	HyperGEN_GENOA	Investigator
Tiwari, Hemant	University of Alabama	htiwari@uab.edu	GOLDN, HyperGEN_GENOA	Investigator
Besich, Zachary M	University of Arizona	zmb@email.arizona.edu	ATGC	Investigator
Bleecker, Eugene	University of Arizona	erbleecker@email.arizona.edu	SARP	Investigator
Ehrman, Clara	University of Arizona	csehrman@email.arizona.edu	ATGC	Investigator
Graves, Penelope	University of Arizona	pgraves@email.arizona.edu	ATGC	Investigator
Li, Xingnan	University of Arizona	lixingnan1@deptofmed.arizona.edu	SARP	Investigator
Martinez, Fernando	University of Arizona	fdmartin@email.arizona.edu	ATGC	Investigator
Meyers, Deborah A	University of Arizona	dameyers@email.arizona.edu	SARP	PI
Spies, David	University of Arizona	dspies@email.arizona.edu	ATGC	Investigator
Stern, Debra	University of Arizona	dastern@email.arizona.edu	ATGC	Investigator
Ochs-Balcom, Heather	University at Buffalo	hmochs2@buffalo.edu	WHI	Investigator
Graw, Sharon	University of Colorado Anschutz Medical Campus	sharon.graw@ucdenver.edu	TOPChEF	Investigator
Mestroni, Luisa	University of Colorado Anschutz Medical Campus	luisa.mestroni@ucdenver.edu	TOPChEF	Investigator
Sweet, Mary	University of Colorado Anschutz Medical Campus	mary.sweet@ucdenver.edu	TOPChEF	Investigator
Datta, Gargi	University of Colorado at Boulder	gargi.datta@colorado.edu	IRC	Investigator
Vrieze, Scott	University of Colorado at Boulder	vrive0006@umn.edu	IRC	Investigator
Wedow, Robert	University of Colorado at Boulder	robert.wedow@colorado.edu	IRC	Investigator
Nassir, Rami	University of California, Davis	rmnassir@ucdavis.edu	WHI	Investigator
Barnes, Kathleen	University of Colorado at Denver	Kathleen.Barnes@UCDenver.edu	BAGS	PI
Cardwell, Jonathan	University of Colorado at Denver	JONATHAN.CARDWELL@UCDENVER.EDU	IPF	Investigator
Chavan, Sameer	University of Colorado at Denver	sameer.chavan@ucdenver.edu	BAGS	Investigator
Daya, Michelle	University of Colorado at Denver	MICHELLE.DAYA@UCDENVER.EDU	BAGS, GeneSTAR	Investigator
DiPaola, Jorge	University of Colorado at Denver	Jorge.DiPaola@ucdenver.edu	MLOF	Investigator
Hokanson, John	University of Colorado at Denver	John.Hokanson@ucdenver.edu	COPD	Investigator
Kinney, Greg	University of Colorado at Denver	greg.kinney@ucdenver.edu	COPD	Investigator
Lange, Ethan	University of Colorado at Denver	ethan.lange@ucdenver.edu	JHS	Investigator
Lange, Leslie	University of Colorado at Denver	leslie.lange@ucdenver.edu	JHS	Investigator
Mathai, Susan	University of Colorado at Denver	SUSAN.MATHAI@UCDENVER.EDU	IPF	Investigator
Powers Becker, Julia	University of Colorado at Denver	JULIA.POWERS@UCDENVER.EDU	IPF	Investigator
Preethi Boorgula, Meher	University of Colorado at Denver	meher.boorgula@ucdenver.edu	BAGS	Investigator
Rafaels, Nicholas	University of Colorado at Denver	nicholas.rafaels@ucdenver.edu	BAGS	Investigator
Russell, Pamela	University of Colorado at Denver	PAMELA.RUSSELL@UCDENVER.EDU	IPF	Investigator
Schwartz, David	University of Colorado at Denver	David.Schwartz@ucdenver.edu	IPF	PI
Schwarz, Marvin	University of Colorado at Denver	Marvin.Schwarz@ucdenver.edu	IPF	Investigator
Shaw, Jessica R	University of Colorado at Denver	jessica.shaw@ucdenver.edu	JHS	Investigator
Shetty, Aniket	University of Colorado at Denver	aniket.shetty@ucdenver.edu	BAGS	Investigator
Taylor, Matthew	University of Colorado at Denver	matthew.taylor@ucdenver.edu	TOPChEF	PI
Walker, Tarik	University of Colorado at Denver	TARIK.WALKER@UCDENVER.EDU	IPF	Investigator
Walts, Avram	University of Colorado at Denver	avram.walts@ucdenver.edu	IPF	Investigator
Yang, Ivana	University of Colorado at Denver	IVANA.YANG@UCDENVER.EDU	IPF	Investigator
Young, Kendra	University of Colorado at Denver	kendra.young@ucdenver.edu	COPD	Investigator
Raffel, Leslie	University of California, Irvine	lrffel@uci.edu	MESA	Investigator
Deka, Ranjan	University of Cincinnati	DEKAR@UCMAIL.UC.EDU	SAS	Investigator
Casaburi, Richard	University of California, Los Angeles	casaburi@ucla.edu	COPD	Investigator
Crandall, Carolyn	University of California, Los Angeles	ccrandall@mednet.ucla.edu	WHI	Investigator
Sokolow, Sophie	University of California, Los Angeles	ssokolow@sonnet.ucla.edu	MESA	Investigator
Sul, Jae Hoon	University of California, Los Angeles	JaeHoonSul@mednet.ucla.edu	CFS	Investigator

Name	Institution	E-mail	Group	Role
Watson, Karol	University of California, Los Angeles	kwatson@mednet.ucla.edu	MESA	Investigator
Gaulton, Kyle	University of California, San Diego	kgaulton@ucsd.edu	FHS	Investigator
Gonzalez, Hector	University of California, San Diego	hectorgonzalez@ucsd.edu	HCHS_SOL	Investigator
Salem, Rany	University of California, San Diego	rsalem@ucsd.edu	WHI	Investigator
Shadyab, Aladdin	University of California, San Diego	ahshadya@ucsd.edu	WHI	Investigator
Burchard, Esteban	University of California, San Francisco	esteban.burchard@ucsf.edu	ATGC, PGX_Asthma	PI
Eckalbar, Walter	University of California, San Francisco	Walter.Eckalbar@ucsf.edu	ATGC, PGX_Asthma	Investigator
Eng, Celeste	University of California, San Francisco	Celeste.Eng@ucsf.edu	ATGC, PGX_Asthma	Investigator
Hartman, Kevin	University of California, San Francisco	kevin.hartman@ucsf.edu	PGX_Asthma	Investigator
Hernandez, Ryan	University of California, San Francisco	Ryan.Hernandez@ucsf.edu	PGX_Asthma	Co-PI
Keys, Kevin	University of California, San Francisco	kevin.keys@ucsf.edu	ATGC	Investigator
Kwok, Pui-Yan	University of California, San Francisco	pui.kwok@ucsf.edu	PGX_Asthma	Investigator
Liberto, Jennifer	University of California, San Francisco	jennifer.liberto@ucsf.edu	PGX_Asthma	Investigator
Mak, Angel CY	University of California, San Francisco	chiyan.mak@ucsf.edu	PGX_Asthma, ATGC	Investigator
Musharoff, Shaila	University of California, San Francisco	Shaila.Musharoff@ucsf.edu	PGX_Asthma	Investigator
Oh, Sam	University of California, San Francisco	Sam.Oh@ucsf.edu	ATGC, PGX_Asthma	Investigator
Park, Danny	University of California, San Francisco	Danny.Park@ucsf.edu	PGX_Asthma	Investigator
Seielstad, Mark	University of California, San Francisco	Mark.Seielstad@UCSF.edu	REDS-III_Brazil	Investigator
Spear, Melissa	University of California, San Francisco	melissa.spear@ucsf.edu	PGX_Asthma	Investigator
Szpiech, Zachary	University of California, San Francisco	zachary.szpiech@ucsf.edu	PGX_Asthma	Investigator
Tong, Dominic	University of California, San Francisco	dmctong@berkeley.edu	PGX_Asthma	Investigator
Torgerson, Dara	University of California, San Francisco	dara.torgerson@ucsf.edu	PGX_Asthma	Investigator
Torres, Raul	University of California, San Francisco	raul.torres@ucsf.edu	PGX_Asthma	Investigator
White, Marquitta	University of California, San Francisco	Marquitta.White@ucsf.edu	ATGC, PGX_Asthma	Investigator
Zaitlen, Noah	University of California, San Francisco	noah.zaitlen@ucsf.edu	ATGC, PGX_Asthma	Investigator
Darbar, Dawood	University of Illinois at Chicago	darbar@uic.edu	AFGen	Investigator
Gordeuk, Victor	University of Illinois at Chicago	vgordeuk@uic.edu	walk_PHaST	Investigator
Hoth, Karin	University of Iowa	karin-hoth@uiowa.edu	COPD	Investigator
Wallace, Robert	University of Iowa	robert-wallace@uiowa.edu	WHI	Investigator
Arnett, Donna K	University of Kentucky	donna.arnett@uky.edu	GOLDN, HyperGEN_GENOA	PI
Fardo, David	University of Kentucky	david.fardo@uky.edu	GOLDN, HyperGEN_GENOA	Investigator
Morris, Andrew	University of Liverpool	amorris@well.ox.ac.uk	FHS	Investigator
Ament, Seth	University of Maryland	sament@som.umaryland.edu	Amish	Investigator
Beitelshees, Amber	University of Maryland	abeitels@medicine.umaryland.edu	Amish	Investigator
Chang, Christy	University of Maryland	cchang@medicine.umaryland.edu	Amish	Investigator
Damcott, Coleen	University of Maryland	cdamcott@medicine.umaryland.edu	Amish	Investigator
Dave, Tushar	University of Maryland	tdave@medicine.umaryland.edu	Amish	Investigator
Devine, Scott	University of Maryland	sdevine@som.umaryland.edu	Amish	Investigator
Fu, Mao	University of Maryland	mfu@medicine.umaryland.edu	Amish	Investigator
Gaynor, Brady	University of Maryland	bgaynor@som.umaryland.edu	Amish	Investigator
Gong, Da-Wei	University of Maryland	dgong@medicine.umaryland.edu	Amish	Investigator
Guan, Yue	University of Maryland	yguan@som.umaryland.edu	Amish	Investigator
Harris, Daniel	University of Maryland	dharris@umaryland.edu	Amish	Investigator
Hong, Elliott	University of Maryland	ehong@mprc.umaryland.edu	Amish	Investigator
Kessler, Michael	University of Maryland	michael.kessler@som.umaryland.edu	Amish	Investigator
Kittner, Steven	University of Maryland	SKittner@som.umaryland.edu	Amish	Investigator
Lewis, Joshua	University of Maryland	jlewis2@medicine.umaryland.edu	Amish	Investigator
McArdle, Patrick	University of Maryland	pmcardle@medicine.umaryland.edu	Amish	Investigator
McLenithan, John	University of Maryland	jmclenithan@som.umaryland.edu	Amish	Investigator
Mitchell, Braxton	University of Maryland	bmitchel@som.umaryland.edu	Amish	PI
Montasser, May E.	University of Maryland	mmontass@som.umaryland.edu	Amish	Investigator
O'Connell, Jeff	University of Maryland	joconnel@som.umaryland.edu	Amish	Investigator
O'Connor, Tim	University of Maryland	toconnor@som.umaryland.edu	Amish	Investigator
Parsa, Afshin	University of Maryland	aparsa@som.umaryland.edu	Amish	Investigator
Perry, James	University of Maryland	jperry@som.umaryland.edu	Amish	Investigator
Pollin, Toni	University of Maryland	tpollin@medicine.umaryland.edu	Amish	Investigator
Reed, Robert	University of Maryland	rreed@medicine.umaryland.edu	Amish	Investigator
Ryan, Kathleen	University of Maryland	kryan@som.umaryland.edu	Amish	Investigator
Salimi, Shabnam	University of Maryland	ssalimi@som.umaryland.edu	Amish	Investigator
Shetty, Amol	University of Maryland	ashetty@som.umaryland.edu	Amish	Investigator
Snitker, Soren	University of Maryland	ssnitker@medicine.umaryland.edu	Amish	Investigator
Song, Wei	University of Maryland	WSong@som.umaryland.edu	Amish	Investigator

Name	Institution	E-mail	Group	Role
Streeten, Elizabeth	University of Maryland	estreete@medicine.umaryland.edu	Amish	Investigator
Sztalryd, Carole	University of Maryland	csztalry@grecc.umaryland.edu	Amish	Investigator
Taylor, Simeon	University of Maryland	staylor2@medicine.umaryland.edu	Amish	Investigator
Xu, Huichun	University of Maryland	hxu1@medicine.umaryland.edu	Amish	Investigator
Yang, Rongze	University of Maryland	ryang@medicine.umaryland.edu	Amish	Investigator
Zaghloul, Norann	University of Maryland	nzaghloul@medicine.umaryland.edu	Amish	Investigator
Abecasis, Goncalo	University of Michigan	goncalo@umich.edu	IRC	PI
Bielak, Larry	University of Michigan	lfbielak@umich.edu	AA_CAC, HyperGEN_GENOA	Investigator
Blackwell, Thomas	University of Michigan	tblackw@umich.edu	IRC	Investigator
Boehnke, Mike	University of Michigan	boehnke@umich.edu	IRC	Investigator
Curtis, Jeffrey	University of Michigan	jcurtis@med.umich.edu	COPD	Investigator
Das, Sayantan	University of Michigan	sayantan@umich.edu	IRC	Investigator
Flickinger, Matthew	University of Michigan	mflick@umich.edu	IRC	Investigator
Gagliano, Sarah	University of Michigan	sarahgag@umich.edu	IRC	Investigator
Ganesh, Santhi	University of Michigan	sganesh@med.umich.edu	VTE	Investigator
Geng, Xiaoqi (Priscilla)	University of Michigan	xgeng@umich.edu	IRC	Investigator
Jhun, Min A	University of Michigan	minajhun@umich.edu	HyperGEN_GENOA	Investigator
Kang, Hyun Min	University of Michigan	hmkang@umich.edu	IRC	Investigator
Kardia, Sharon	University of Michigan	skardia@umich.edu	AA_CAC, HyperGEN_GENOA	Investigator
Klemmer, Robert	University of Michigan	klemmerr@umich.edu	IRC	Investigator
Lee, Seunggeun Shawn	University of Michigan	leeshawn@umich.edu	IRC	Investigator
LeFaive, Jonathon	University of Michigan	lefaivej@umich.edu	IRC	Investigator
Lin, Keng Han	University of Michigan	khlin@umich.edu	IRC	Investigator
Pandit, Anita	University of Michigan	anitapan@umich.edu	IRC	Investigator
Peyser, Patricia	University of Michigan	ppeyser@umich.edu	AA_CAC, HyperGEN_GENOA	Investigator
Pipe, Steve	University of Michigan	ummdswp@med.umich.edu	MLOF	Investigator
Quick, Corbin	University of Michigan	corbinq@umich.edu	IRC	Investigator
Schmidt, Ellen	University of Michigan	schellen@umich.edu	IRC	Investigator
Smith , Albert Vernon	University of Michigan	albertvs@umich.edu	IRC	Investigator
Smith, Jennifer	University of Michigan	smjenn@umich.edu	HyperGEN_GENOA	Investigator
Taliun, Daniel	University of Michigan	dtaliun@umich.edu	IRC	Investigator
VandeHaar, Peter	University of Michigan	pjvh@umich.edu	IRC	Investigator
Weinstock, Joshua	University of Michigan	jweinstk@umich.edu	IRC	Investigator
Willer, Cristen	University of Michigan	cristen@umich.edu	IRC	Investigator
Wing, Mary Kate	University of Michigan	mktrost@umich.edu	IRC	Investigator
Zhao, Xutong	University of Michigan	xtzhao@umich.edu	IRC	Investigator
Zhao, Wei	University of Michigan	zhaowei@umich.edu	HyperGEN_GENOA	Investigator
Zhou, Xiang	University of Michigan	xzhousph@umich.edu	IRC, MESA	Investigator
Zoellner, Sebastian	University of Michigan	szoellne@umich.edu	IRC	Investigator
Abdul-Rahman, Omar	University of Mississippi	oabduhrahman@umc.edu	JHS	Investigator
Anugu, Pramod	University of Mississippi	panugu@umc.edu	JHS	Investigator
Challagundla, Lavanya	University of Mississippi	lchallagundla@umc.edu	JHS	Investigator
Correa, Adolfo	University of Mississippi	acorrea@umc.edu	JHS	PI
Ekunwe, Lynette	University of Mississippi	lekunwe@umc.edu	JHS	Investigator
Fox, Ervin	University of Mississippi	efox@umc.edu	JHS	Investigator
Furniss, Anna	University of Mississippi	afurniss@umc.edu	JHS	Investigator
Gao, Yan	University of Mississippi	ygao@umc.edu	JHS	Investigator
Garrett, Michael	University of Mississippi	mrgarrett@umc.edu	JHS	Investigator
Griswold, Michael	University of Mississippi	mgriswold@umc.edu	JHS	Investigator
Hall, Michael	University of Mississippi	mehall@umc.edu	JHS	Investigator
Howard-Claudio, Candace M.	University of Mississippi	chowardclaudio@umc.edu	JHS	Investigator
Maher, Joe	University of Mississippi	jmaher@umc.edu	JHS	Investigator
Mei, Hao	University of Mississippi	hmei@umc.edu	JHS	Investigator
Min, Nancy	University of Mississippi	ymin@umc.edu	JHS	Investigator
Mosley, Thomas	University of Mississippi	tmosley@umc.edu	AFGen, HyperGEN_GENOA	Investigator
Musani, Solomon	University of Mississippi	smusani@umc.edu	JHS	Investigator
Mwasongwe, Stanford	University of Mississippi	smwasongwe@umc.edu	JHS	Investigator
Simino, Jeannette	University of Mississippi	jsimino@umc.edu	AFGen	Investigator
Suzuki, Takeki	University of Mississippi	tsuzuki@umc.edu	JHS	Investigator
Wilson, James	University of Mississippi	jgwilson2@umc.edu	JHS	Co-PI

<u>Name</u>	<u>Institution</u>	<u>E-mail</u>	<u>Group</u>	<u>Role</u>
Winters, Karen	University of Mississippi	kwinters@umc.edu	JHS	Investigator
Zhou, Yunyun	University of Mississippi	yzhou@umc.edu	JHS	Investigator
McManus, David	University of Massachusetts Memorial Health Center	mcmanusd@ummhc.org	FHS	Investigator
Silver, Brian	University of Massachusetts Memorial Health Center	Brian.Silver@umassmemorial.org	WHI	Investigator
Alonso, Alvaro	University of Minnesota	alvaro.alonso@emory.edu	AFGen, VTE	Investigator
Demerath, Ellen	University of Minnesota	ewd@umn.edu	VTE	Investigator
Folsom, Aaron	University of Minnesota	folso001@umn.edu	VTE	Investigator
Guan, Weihua	University of Minnesota	wguan@umn.edu	VTE	Investigator
Pankow, James	University of Minnesota	panko001@umn.edu	MESA, VTE	Investigator
Pankratz, Nathan	University of Minnesota	pankr018@umn.edu	VTE	Investigator
Seyerle, Amanda	University of Minnesota	aseyerle@umn.edu	VTE	Investigator
Tang, Weihong	University of Minnesota	tang0097@umn.edu	VTE	Investigator
Thyagarajan, Bharat	University of Minnesota	thya0003@umn.edu	HCHS_SOL	Investigator
Tsai, Michael	University of Minnesota	tsaix001@umn.edu	MESA	Investigator
Vrieze, Scott	University of Minnesota	vrie0006@umn.edu	IRC	Investigator
Lettre, Guillaume	University of Montreal	Guillaume.Lettre@mhi-humangenetics.org	WHI	Investigator
Avery, Christy	University of North Carolina	christy_avery@unc.edu	HCHS_SOL	Investigator
Derebail, Vimal	University of North Carolina	vimal_derebail@med.unc.edu	VTE	Investigator
Duan, Qing	University of North Carolina	qduan@email.unc.edu	JHS, WHI	Investigator
Franceschini, Nora	University of North Carolina	noraf@unc.edu	VTE, WHI	Investigator
Gondalia, Rahul	University of North Carolina	rahgonda@unc.edu	HCHS_SOL	Investigator
Graff, Misa	University of North Carolina	migraff@email.unc.edu	VTE, WHI	Investigator
Highland, Heather	University of North Carolina	heather.highland@unc.edu	HCHS_SOL	Investigator
Hodonsky, Chani	University of North Carolina	chani_hodonsky@unc.edu	HCHS_SOL	Investigator
Justice, Anne	University of North Carolina	justanne@email.unc.edu	VTE, HCHS_SOL, WHI	Investigator
Li, Yun	University of North Carolina	yun_li@med.unc.edu	WHI	Investigator
Lin, Danyu	University of North Carolina	lin@bios.unc.edu	WHI	Investigator
Lin, Bridget Mengshan	University of North Carolina	bmlin@live.unc.edu	WHI	Investigator
Mohlke, Karen	University of North Carolina	mohlke@med.unc.edu	FHS	Investigator
North, Kari	University of North Carolina	kari_north@unc.edu	VTE, HCHS_SOL, WHI	Investigator, Co-PI
Raffield, Laura	University of North Carolina	raffield@email.unc.edu	JHS	Investigator
Sheldahl, Christopher John	University of North Carolina	sheldahl@email.unc.edu	WHI	Investigator
Von Holle, Ann	University of North Carolina	vonholle@med.unc.edu	HCHS_SOL	Investigator
Yoneyama, Sachiko	University of North Carolina	yoneyama@email.unc.edu	HCHS_SOL	Investigator
Young, Kristin	University of North Carolina	kristin.young@unc.edu	WHI	Investigator
Youngblood, Marston	University of North Carolina	youngbl1@email.unc.edu	HCHS_SOL	Investigator
Mahajan, Anubha	University of Oxford	anubha@well.ox.ac.uk	FHS	Investigator
McCarthy, Mark	University of Oxford	mark.mccarthy@dr1.ox.ac.uk	FHS	Investigator
Benos, Takis	University of Pittsburgh	benos@pitt.edu	COPD	Investigator
Blobner, Brandon	University of Pittsburgh	bmb83@pitt.edu	SAS	Investigator
Carlson, Jenna	University of Pittsburgh	jnc35@pitt.edu	SAS	Investigator
Gladwin, Mark	University of Pittsburgh	gladwinmt@upmc.edu	walk_PHaSST	PI
Minster, Ryan L	University of Pittsburgh	rminster@pitt.edu	SAS	Investigator
Nouraie, Seyed Mehdi	University of Pittsburgh	nouraies@upmc.edu	walk_PHaSST	Investigator
Patel, Sanjay	University of Pittsburgh	patelsr2@upmc.edu	CFS	Investigator
Rosenthal, Samantha	University of Pittsburgh	slr61@pitt.edu	SAS	Investigator
Russell, Emily	University of Pittsburgh	emr18@pitt.edu	SAS	Investigator
Sciurba, Frank	University of Pittsburgh	sciurbafc@upmc.edu	COPD	Investigator
Weeks, Daniel E.	University of Pittsburgh	weeks@pitt.edu	SAS	Investigator
Zhang, Yingze	University of Pittsburgh	zhanyx@UPMC.EDU	walk_PHaSST	Co-PI
Almasy, Laura	University of Pennsylvania	almasy@mail.med.upenn.edu	SAFS	Investigator
Fan, Shaohua	University of Pennsylvania	shaouaf@mail.med.upenn.edu	Africa7K	Investigator
Hansen, Matthew	University of Pennsylvania	mhansen@penncmedicine.upenn.edu	Africa7K	Investigator
Schellenberg, Gerard	University of Pennsylvania	gerardsc@mail.med.upenn.edu	MESA	Investigator
Tishkoff, Sarah	University of Pennsylvania	tishkoff@penncmedicine.upenn.edu	Africa7K	PI
Chen, Zhanghua	University of Southern California	zhanghuc@usc.edu	ATGC	Investigator
Gauderman, William James	University of Southern California	JIMG@USC.EDU	ATGC	Investigator
Gilliland, Frank	University of Southern California	gillilan@usc.edu	ATGC	Investigator
Sabino, Ester	Universidade de Sao Paulo	sabinoec@usp.br	REDS-III_Brazil	Investigator
Quinlan, Aaron	University of Utah	aquinlan@genetics.utah.edu	MESA	Investigator
Below, Jennifer "Piper"	University of Texas Health	Jennifer.E.Below@uth.tmc.edu	VTE	Investigator

Name	Institution	E-mail	Group	Role
Boerwinkle, Eric	University of Texas Health	Eric.Boerwinkle@uth.tmc.edu	DCC, HCHS_SOL, PharmHU, VTE	Investigator, PI
Bressler, Jan	University of Texas Health	Jan.Bressler@uth.tmc.edu	AFGen	Investigator
Brown, Michael	University of Texas Health	michael.r.brown@uth.tmc.edu	VTE	Investigator
Chen, Han	University of Texas Health	Han.Chen.2@uth.tmc.edu	VTE, CFS	Investigator
de Vries, Paul	University of Texas Health	Paul.S.DeVries@uth.tmc.edu	VTE	Investigator
Fornage, Myriam	University of Texas Health	Myriam.Fornage@uth.tmc.edu	VTE, CARDIA	Investigator, PI
Geng, Xin	University of Texas Health	Xin.geng@uth.tmc.edu	HyperGEN_GENOA	Investigator
Grove, Megan	University of Texas Health	Megan.L.Grove@uth.tmc.edu	VTE	Investigator
Hixson, James	University of Texas Health	James.E.Hixson@uth.tmc.edu	GenSalt, THRV	Investigator
Jian, Xueqiu	University of Texas Health	Xueqiu.jian@uth.tmc.edu	CARDIA, VTE	Investigator
Jun, Goo	University of Texas Health	Goo.Jun@uth.tmc.edu	GenSalt, VTE	Investigator
Liu, Xiaoming	University of Texas Health	Xiaoming.Liu@uth.tmc.edu	VTE	Investigator
Morrison, Alanna C	University of Texas Health	Alanna.C.Morrison@uth.tmc.edu	VTE	Investigator
Polfus, Linda	University of Texas Health	Linda.M.Whitaker@uth.tmc.edu	VTE	Investigator
Richard, Melissa A.	University of Texas Health	melissa.a.lee@uth.tmc.edu	CARDIA	Investigator
Yazdani, Azam Mandana	University of Texas Health	Azam.Yazdani@uth.tmc.edu	VTE	Investigator
Yu, Bing	University of Texas Health	Bing.Yu@uth.tmc.edu	VTE	Investigator
Zhi, Degui	University of Texas Health	Degui.Zhi@uth.tmc.edu	GOLDN, HyperGEN_GENOA	Investigator
Almeida, Marcio	University of Texas Rio Grande Valley School of Medicine	marcio.almeida@utrgv.edu	SAFS	Investigator
Blangero, John	University of Texas Rio Grande Valley School of Medicine	john.blangero@utrgv.edu	SAFS	PI
Curran, Joanne	University of Texas Rio Grande Valley School of Medicine	joanne.curran@utrgv.edu	SAFS	Co-PI
Duggirala, Ravi	University of Texas Rio Grande Valley School of Medicine	ravindranath.duggirala@utrgv.edu	SAFS	Investigator
Goring, Harald	University of Texas Rio Grande Valley School of Medicine	harald.goring@utrgv.edu	SAFS	Investigator
Mahaney, Michael	University of Texas Rio Grande Valley School of Medicine	michael.mahaney@utrgv.edu	SAFS	Investigator
Peralta, Juan Manuel	University of Texas Rio Grande Valley School of Medicine	juan.peralta@utrgv.edu	SAFS	Investigator
Chen, Wei-Min	University of Virginia	wc9c@virginia.edu	MESA	Investigator
Civelek, Mete	University of Virginia	mete@virginia.edu	MESA	Investigator
Farber, Charles	University of Virginia	crf2s@eservices.virginia.edu	MESA	Investigator
Manichaikul, Ani	University of Virginia	am3xa@eservices.virginia.edu	MESA	Investigator
Miller, Clint	University of Virginia	clintm@virginia.edu	MESA	Investigator
Mychaleckyj, Josyf C	University of Virginia	jcm6t@virginia.edu	MESA	Investigator
Nguyen, Jennifer	University of Virginia	jn9ur@eservices.virginia.edu	MESA	Investigator
Ratan, Aakrosh	University of Virginia	ar7jq@eservices.virginia.edu	MESA	Investigator
Rich, Stephen	University of Virginia	ssr4n@virginia.edu	DCC, MESA	Investigator, Co-PI
Sale, Michele	University of Virginia	ms5fe@virginia.edu	MESA	Investigator
Cornell, Elaine	University of Vermont	elaine.cornell@med.uvm.edu	MESA	Investigator
Durda, Peter	University of Vermont	Peter.Durda@uvm.edu	JHS, MESA, VTE	Investigator
Jenny, Nancy	University of Vermont	nancy.jenny@med.uvm.edu	MESA	Investigator
Tracy, Russell	University of Vermont	Russell.Tracy@uvm.edu	CHS, MESA	Investigator, Co-PI
Wassel, Christina	University of Vermont	Christina.wassel@med.uvm.edu	MESA	Investigator
Aalbers, Sanne	University of Washington	saalbers@uw.edu	DCC	Investigator
Anderson, Peter	University of Washington	petera@uw.edu	Northwest Genomics Center	Investigator
Austin, Thomas R.	University of Washington	austintr@uw.edu	AFGen, CHS	Investigator
Bartz, Traci	University of Washington	bartzt@uw.edu	CHS	Investigator
Bis, Joshua	University of Washington	joshbis@u.washington.edu	CHS, DCC	Investigator
Bodah, Eliane	University of Washington	eliane@uw.edu	DCC	Investigator
Borecki, Ingrid	University of Washington	iborecki@uw.edu	DCC	Investigator
Brody, Jennifer	University of Washington	jeco@u.washington.edu	CHS, DCC	Investigator
Broome, Jai	University of Washington	jbroom@uw.edu	DCC	Investigator
Browning, Brian	University of Washington	browning@uw.edu	DCC	Investigator
Browning, Sharon	University of Washington	sguy@uw.edu	DCC	Investigator
Coe, Bradley	University of Washington	bcoe@uw.edu	Northwest Genomics Center	Investigator
Delaney, Chris	University of Washington	jacd@u.washington.edu	CHS	Investigator
Eichler, Evan	University of Washington	eee@gs.washington.edu	Northwest Genomics Center	Investigator
Emery, Leslie	University of Washington	emeryl@uw.edu	DCC	Investigator
Emond, Mary	University of Washington	emond@u.washington.edu	DCC	Investigator

Name	Institution	E-mail	Group	Role
Feng, Jean	University of Washington	jeanfeng@uw.edu	DCC	Investigator
Floyd, James	University of Washington	jfloyd@u.washington.edu	CHS	Investigator
Frazar, Chris	University of Washington	cfrazar@uw.edu	Northwest Genomics Center	Investigator
Fretts, Amanda	University of Washington	amfretts@u.washington.edu	CHS	Investigator
Fullerton, Malia	University of Washington	smfltrtn@uw.edu	DCC	Investigator
Gharib, Sina	University of Washington	sagharib@u.washington.edu	CHS, MESA	Investigator
Gogarten, Stephanie	University of Washington	sdmorris@uw.edu	DCC	Investigator
Goudet, Jerome	University of Washington	jgoudet@uw.edu	DCC	Investigator
Heavner, Ben	University of Washington	bheavner@uw.edu	DCC	Investigator
Heckbert, Susan	University of Washington	heckbert@uw.edu	AFGen, CHS, DCC, MESA, VTE	Investigator
Horike-Pyne, Martha	University of Washington	mjpyne@uw.edu	DCC	Investigator
Hsu, Wan-Ling Nicole	University of Washington	wlhsu@uw.edu	DCC	Investigator
Jain, Deepti	University of Washington	jaind@uw.edu	DCC	Investigator
Jarvik, Gail	University of Washington	pair@u.washington.edu	Northwest Genomics Center	Investigator
Jensen, Paul	University of Washington	pnjensen@uw.edu	CHS	Investigator
Johanson, Eric	University of Washington	ej79@uw.edu	Northwest Genomics Center	Investigator
Johnsen, Jill	University of Washington	JJohnsen@uw.edu	MLOF	Co-PI
Johnson, Craig	University of Washington	wcraigj@u.washington.edu	MESA	Investigator
Khan, Alyna	University of Washington	alynak@uw.edu	DCC	Investigator
Krauter, Stephanie	University of Washington	krauters@uw.edu	MESA, Northwest Genomics Center	Investigator
Kuraisa, Roy	University of Washington	kuraisa@uw.edu	DCC	Investigator
Laurie, Cecelia	University of Washington	calaurie@uw.edu	DCC	Investigator
Laurie, Cathy	University of Washington	ccclaurie@u.washington.edu	DCC, HCHS_SOL	Investigator
Lee, Seung-been	University of Washington	sbslee@uw.edu	Northwest Genomics Center	Investigator
Lemaitre, Rozenn	University of Washington	rozenl@u.washington.edu	CHS	Investigator
Levine, David	University of Washington	levined@u.washington.edu	DCC	Investigator
Little, Amarise	University of Washington	amarise@uw.edu	DCC	Investigator
Longstreth, Will	University of Washington	wl@uw.edu	CHS, DCC	Investigator
Louie, Tin	University of Washington	tinlouie@uw.edu	DCC	Investigator
Lumley, Thomas	University of Washington	tlumley@uw.edu	DCC	Investigator
McGoldrick, Daniel	University of Washington	mcgold@uw.edu	MESA, Northwest Genomics Center	Investigator
McKnight, Barbara	University of Washington	bmck@uw.edu	CHS	Investigator
Mikhaylova, Anna	University of Washington	avmikh@uw.edu	DCC	Investigator
Nelson, Sarah	University of Washington	sarahcn@uw.edu	DCC	Investigator
Nickerson, Deborah	University of Washington	debnick@u.washington.edu	Northwest Genomics Center	PI
Peters, Ulrike	University of Washington	upeters@fredhutch.org	WHI	Investigator
Phillips, Sam	University of Washington	swp89@uw.edu	Northwest Genomics Center	Investigator
Psaty, Bruce	University of Washington	psaty@u.washington.edu	CHS, DCC, MESA, VTE	Investigator, PI
Reiner, Alex	University of Washington	apreiner@uw.edu	JHS, WHI	Investigator
Rice, Ken	University of Washington	kenrice@u.washington.edu	CHS, DCC	PI, Investigator
Robinson-Cohen, Cassianne	University of Washington	cassryc@uw.edu	JHS, MESA	Investigator
Simon, Noah	University of Washington	nrsimon@u.washington.edu	DCC	Investigator
Sitlani, Colleen	University of Washington	csitlani@u.washington.edu	CHS, DCC	Investigator
Smith, Josh	University of Washington	jds66@u.washington.edu	Northwest Genomics Center	Investigator
Smith, Nicholas	University of Washington	nlsmith@u.washington.edu	VTE, CHS	Investigator
Sotoodehnia, Nona	University of Washington	nsotoo@u.washington.edu	CHS, DCC, MESA	Investigator
Stilp, Adrienne	University of Washington	amstilp@uw.edu	DCC, VTE	Investigator
Szpiro, Adam	University of Washington	aszpiro@uw.edu	DCC	Investigator
Thornton, Timothy A.	University of Washington	tathornt@uw.edu	DCC	Investigator
Tirschwell, David	University of Washington	tirsch@uw.edu	WHI	Investigator
Turner, Tychele	University of Washington	tychele@uw.edu	Northwest Genomics Center	Investigator
Visscher, Peter	University of Washington	peter.visscher@uq.edu.au	DCC	Investigator
Wang, Fei Fei	University of Washington	ffwang@uw.edu	DCC	Investigator
Weir, Bruce	University of Washington	bsweir@uw.edu	DCC, HCHS_SOL	Investigator
Wheeler, Marsha	University of Washington	mmwheeler@uw.edu	Northwest Genomics Center	Investigator
Wiggins, Kerri	University of Washington	kwiggins@u.washington.edu	CHS	Investigator

Name	Institution	E-mail	Group	Role
Williams, Kayleen	University of Washington	kmfw@u.washington.edu	MESA	Investigator
Wong, Quenna	University of Washington	qwong@uw.edu	DCC	Investigator
Young, Bessie	University of Washington	youngb@u.washington.edu	JHS	Investigator
Yu, Chaoyu	University of Washington	chaoyuyu@uw.edu	DCC	Investigator
Zalokar-Newton, Mira	University of Washington	zalokarn@uw.edu	DCC	Investigator
Zhang, Qian	University of Washington	qszhang@uw.edu	DCC	Investigator
Zheng, Xiuwen	University of Washington	zhengx@uw.edu	DCC	Investigator
Auer, Paul	University of Wisconsin Milwaukee	pauer@uwm.edu	JHS, WHI	Investigator
Haring, Bernhard	University of Würzburg	Haring_B@ukw.de	WHI	Investigator
Collier, Sarah	Vanderbilt University	sarah.m.parker@vanderbilt.edu	AFGen	Investigator
DeBaun, Michael	Vanderbilt University	m.debaun@vanderbilt.edu	SIT_SCD	Investigator
Li, Bingshan	Vanderbilt University	bingshan.li@vanderbilt.edu	JHS	Investigator
Roden, Dan	Vanderbilt University	dan.roden@Vanderbilt.Edu	AFGen	Investigator
Shoemaker, M. Benjamin	Vanderbilt University	moore.b.shoemaker@vanderbilt.edu	AFGen	Investigator
Kleinbrink, Erica	Wayne State University	ekleinbr@med.wayne.edu	MESA	Investigator
Allred, Nicholette (Nichole) Palmer	Wake Forest Baptist Health	nallred@wakehealth.edu	AA_CAC	Investigator
Ampleford, Elizabeth	Wake Forest Baptist Health	eamplefo@wakehealth.edu	SARP	Investigator
Bowden, Don	Wake Forest Baptist Health	dbowden@wakehealth.edu	AA_CAC	Investigator
Ding, Jingzhong ding	Wake Forest Baptist Health	jding@wakehealth.edu	MESA	Investigator
Divers, Jasmin	Wake Forest Baptist Health	jdivers@wfubmc.edu	AA_CAC, MESA	Investigator
Hayden, Kathleen	Wake Forest Baptist Health	khayden@wakehealth.edu	MESA, WHI	Investigator
Herrington, David	Wake Forest Baptist Health	dherring@wakehealth.edu	MESA	Investigator
Hughes, Timothy	Wake Forest Baptist Health	tmhughes@wakehealth.edu	MESA	Investigator
Liu, Yongmei	Wake Forest Baptist Health	yoliu@wakehealth.edu	MESA	Investigator
Misra, Biswapriya	Wake Forest Baptist Health	bmisra@wakehealth.edu	MESA	Investigator
Ng, Maggie	Wake Forest Baptist Health	mng@wakehealth.edu	AA_CAC	Investigator
Olivier, Michael	Wake Forest Baptist Health	molivier@wakehealth.edu	MESA	Investigator
Ortega, Victor	Wake Forest Baptist Health	vortega@wakehealth.edu	SARP	Investigator
Snively, Beverly	Wake Forest Baptist Health	bmellen@wakehealth.edu	WHI	Investigator
Young, Tracey	Wake Forest Baptist Health	trayoung@wakehealth.edu	MESA	Investigator
Carty, Cara	Women's Health Initiative	ccarty@whi.org	WHI	Investigator
Haessler, Jeff	Women's Health Initiative	jhaessle@whi.org	WHI	Investigator
Herndon, Megan	Women's Health Initiative	mskinner@whi.org	WHI	Investigator
Liu, Simin	Women's Health Initiative	simin_liu@brown.edu	JHS, SAS, WHI	Investigator
Tinker, Lesley	Women's Health Initiative	ltinker@whi.org	WHI	Investigator
Messerlian, GERALYN	Women and Infants Care New England	GMesserlian@wihri.org	SAS	Investigator
An, Ping	Washington University in St Louis	anping@dsg.wustl.edu	AA_CAC	Investigator
Appelbaum, Elizabeth	Washington University in St Louis	eappelbaum@wustl.edu	MGI	Investigator
Brown, Matthew	Washington University in St Louis	matthew@wubios.wustl.edu	THRV	Investigator
Cordes, Matthew	Washington University in St Louis	mcordes@wustl.edu	MGI	Investigator
Courtney, Laura	Washington University in St Louis	lcourtne@wustl.edu	MGI	Investigator
Daw, Warwick	Washington University in St Louis	warwick@dsgmail.wustl.edu	AA_CAC	Investigator
DeLuca, Tracie	Washington University in St Louis	tdeluca@wustl.edu	MGI	Investigator
Dutcher, Susan	Washington University in St Louis	dutcher@wustl.edu	MGI	PI
Farmer, Candace	Washington University in St Louis	cfarmer@wustl.edu	MGI	Investigator
Feitosa, Mary	Washington University in St Louis	mfeitosa@wustl.edu	AA_CAC	Investigator
Fulton, Bob	Washington University in St Louis	BFULTON@genome.wustl.edu	MGI	Investigator
Fulton, Lucinda	Washington University in St Louis	lfulton@wustl.edu	MGI	Investigator
Godfrey Ponce, Jennifer	Washington University in St Louis	jgodfrey@wustl.edu	MGI	Investigator
Gu, C. Charles	Washington University in St Louis	gc@wustl.edu	HyperGEN_GENOA	Investigator
Hall, Ira	Washington University in St Louis	ihall@wustl.edu	MGI	Investigator
Kraja, Aldi	Washington University in St Louis	aldi@wustl.edu	AA_CAC	Investigator
Lenzini, Petra	Washington University in St Louis	plenzini@dsgmail.wustl.edu	AA_CAC	Investigator
Locke, Adam	Washington University in St Louis	adam.locke@wustl.edu	MGI	Investigator
Moeller, Deborah	Washington University in St Louis	dmoeller@wustl.edu	MGI	Investigator
Musick, Judith R.	Washington University in St Louis	jmusick@wustl.edu	MGI	Investigator
Pohl, Craig	Washington University in St Louis	cpohl@wustl.edu	MGI	Investigator
Province, Mike	Washington University in St Louis	mprovince@wustl.edu	AA_CAC	Investigator
Rao, D.C.	Washington University in St Louis	rao@wubios.wustl.edu	HyperGEN_GENOA, THRV	PI, Investigator
Reily, Amy D.	Washington University in St Louis	amy.d.reily@wustl.edu	MGI	Investigator
Saccone, Nancy	Washington University in St Louis	nlims@genetics.wustl.edu	AA_CAC	Investigator
Schwander, Karen	Washington University in St Louis	karen2@wubios.wustl.edu	THRV	Investigator
Stitzel, Nathan	Washington University in St Louis	nstitziel@wustl.edu	MGI	Investigator

<u>Name</u>	Institution	E-mail	Group	Role
Sung, Yun Ju	Washington University in St Louis	yunju@wustl.edu	THRV	Investigator
Waligorski, Jason	Washington University in St Louis	jwaligor@wustl.edu	MGI	Investigator
Wojczynski , Mary	Washington University in St Louis	mwojczynski@dsgmail.wustl.edu	AA_CAC	Investigator
Glahn, David	Yale University	david.glahn@yale.edu	SAFS	Investigator
Hawley, Nicola	Yale University	nicola.hawley@yale.edu	SAS	Investigator
Knowles, Emma	Yale University	emma.knowles@yale.edu	SAFS	Investigator