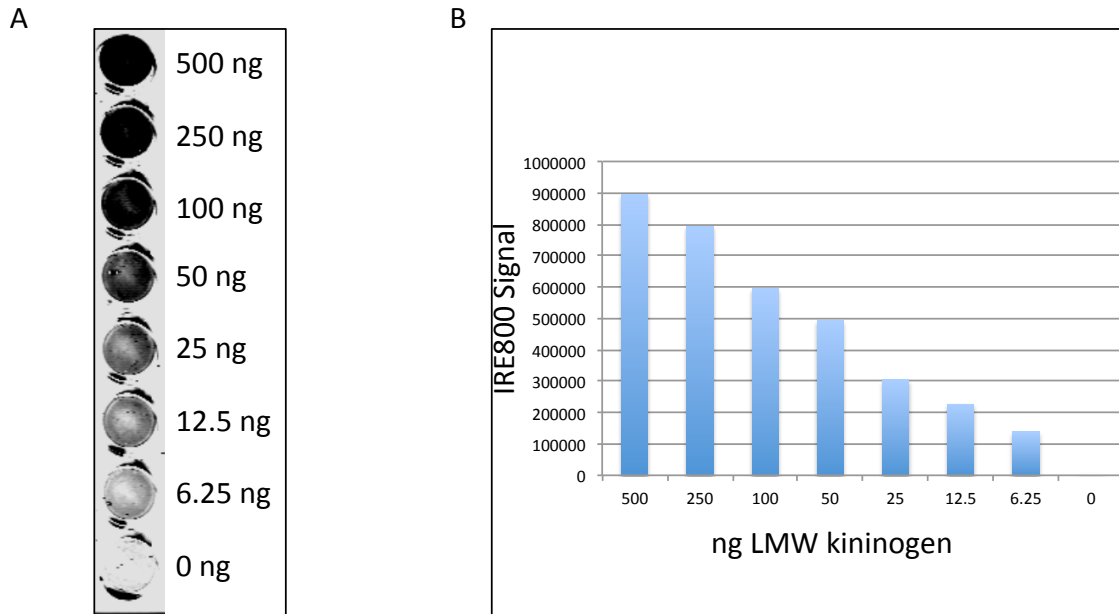
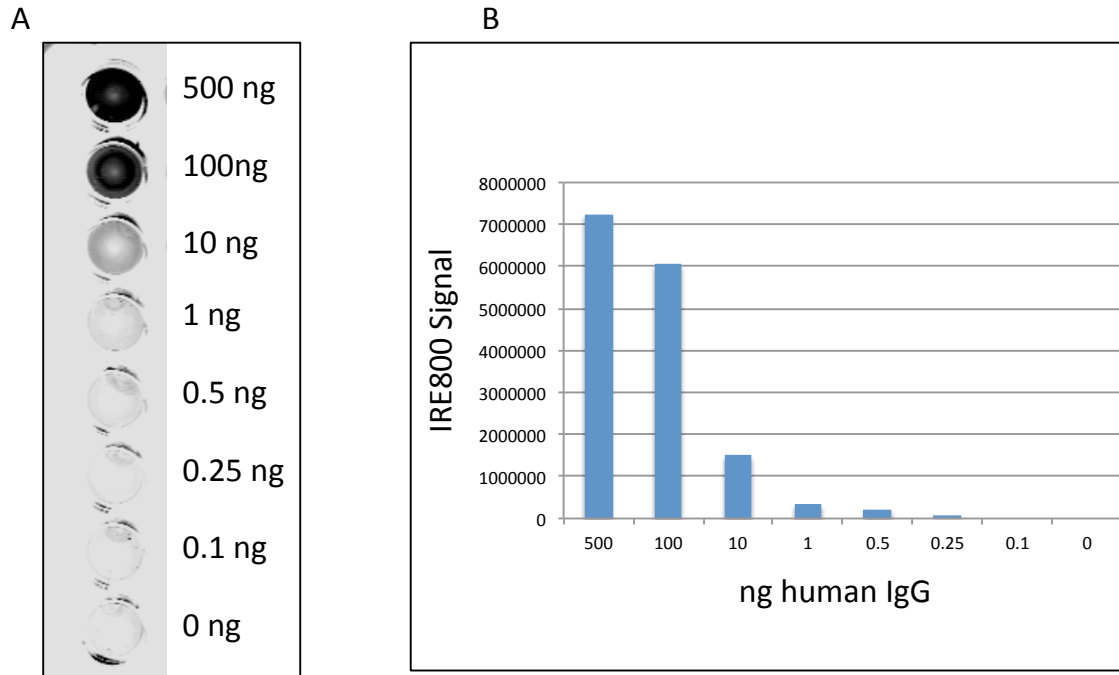


Supplemental Figures.



**Supplementary Figure S1.** Detection of antibody captured Hep G2 cell expressed kininogen. A) Lectin detection of immunocaptured kininogen from 500 ng to to 6.25 ng. B) Bar graph showing the signal intensity. Hep G2 cell expressed kininogen contains 4 sites of fucosylation and is >65% fucosylated.



**Supplementary Figure S2.** Detection of antibody captured fucosylated human IgG. A) Lectin detection of immunocaptured human IgG from 500 ng to to 0.1 ng. B) Bar graph showing the signal intensity. IgG contains one glycan site which is ~95% fucosylated.