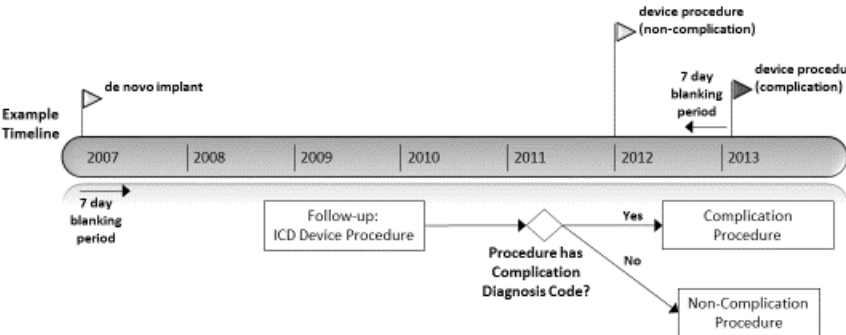


SUPPLEMENTAL MATERIAL

Table S1. Demographic Codes.

Variable	Codes
Myocardial infarction	410.x, 412.x
Congestive heart failure	402.01, 402.11, 402.91, 404.01, 404.03, 404.11, 404.13, 404.91, 404.93, 428, 428.0, 428.1, 428.2, 428.20, 428.21, 428.22, 428.23, 428.3, 428.30, 428.31, 428.32, 428.33, 428.4, 428.40, 428.41, 428.42, 428.43, 428.9
Atrial Fibrillation	427.3, 427.31, 427.32
Peripheral vascular disease	440, 440.0, 440.2, 440.20, 440.21, 440.22, 440.23, 440.24, 440.29, 440.3, 440.30, 440.31, 440.4, 440.8, 440.9, 443, 443.8, 443.9, 443.89, 443.9, 785.4
Hypertrophic Cardiomyopathy	425.1, 425.11, 425.18
Chronic pulmonary disease	490, 491, 492, 492.0, 492.8, 493, 493.00, 493.01, 493.02, 493.10, 493.11, 493.12, 493.21, 493.22, 493.8, 493.92, 494, 495, 495.0, 495.2, 495.7, 495.9, 496, 501, 502, 503, 504, 505, 506.4, 508.1
Diabetes without chronic complication	250.0, 250.00, 250.01, 250.02, 250.03, 250.1, 250.10, 250.11, 250.12, 250.13, 250.2, 250.20, 250.21, 250.22, 250.2202, 250.23, 250.3, 250.30, 250.31, 250.32, 2503.3
Diabetes with chronic complication	250, 250.4, 250.40, 250.41, 250.42, 250.43, 250.5, 250.50, 250.51, 250.52, 250.53, 250.6, 250.60, 250.61, 250.62, 250.63, 250.7, 250.70, 250.71, 250.72, 250.73, 250.8, 250.80, 250.81, 250.82, 250.83, 250.9, 250.90, 250.91, 250.92, 250.93
Renal Disease	403.01, 403.11, 403.91, 404.02, 404.03, 404.12, 404.13, 404.92, 404.93, 583, 583.0, 583.1, 583.2, 583.3, 583.4, 583.5, 583.6, 583.7, 588.0, V45.1, V42.0, 582.x, 585.x, 586.x, V56.x
Moderate or severe liver disease	570, 571, 572, 571.2, 571.3, 571.5, 571.8, 571.9, 572.8, 751.62

Figure S1. Analysis Method for Capturing *de novo*, Uncomplicated, and Complicated Procedures.



7-day blanking period to prevent inappropriate inclusion of implant or complication procedures (i.e same procedure incorrectly coded on different dates for inpatient/outpatient/physician).

Figure S2. Patient Follow-up In Study.

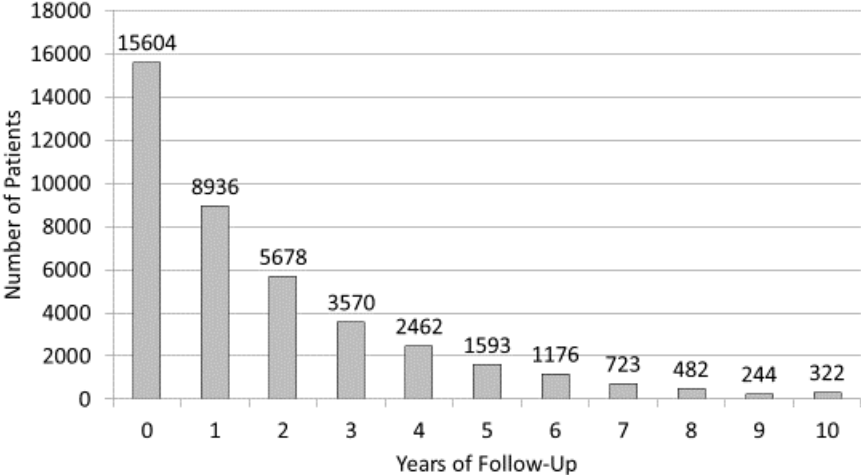
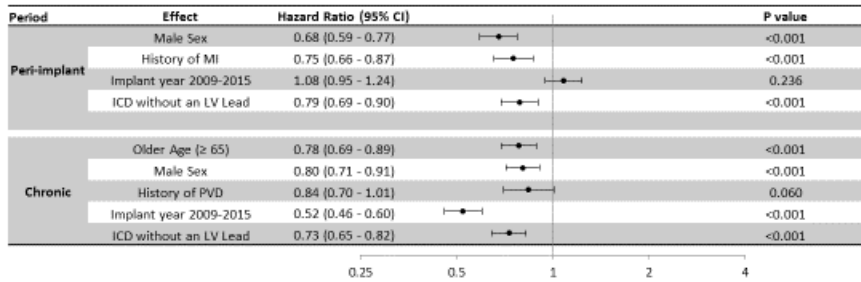


Figure S3. Multivariate analysis of risk factors for complications.

Multivariate analysis of risk factors for lead procedures with mechanical diagnosis



Multivariate analysis of risk factors for device procedures with infectious diagnosis

