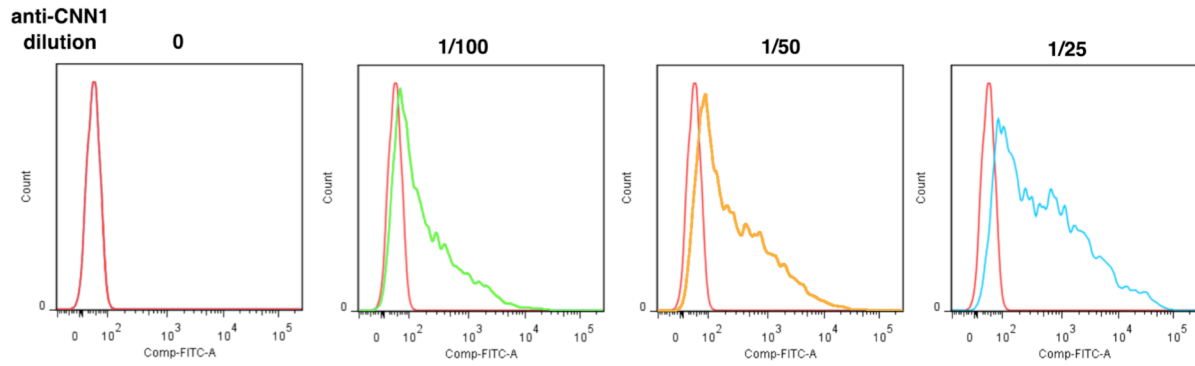
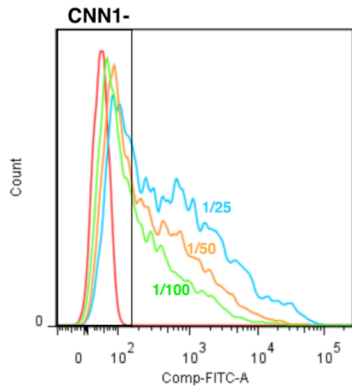


	Sample Name
—	Specimen 1:100
—	Specimen 1:50
—	Specimen 1:25
—	Compensation Controls APC Stained Co...



Supplemental Figure S2. Anti-Calponin IgG dilution test for FACS analysis.

CLP antibody was titrated for FACS analysis of LMs. The shift of the peak for CLP-negative cells indicates the presence of non-specific binding of the antibody. Based on this result, the anti-CLP antibody was used at 1:25 dilution.