

iP (μM):							5	50	500
MgCl ₂ :				+	+	+	+	+	+
Rv0078 (μM):	0	0.01	0.1	1	0.01	0.1	1	1	1

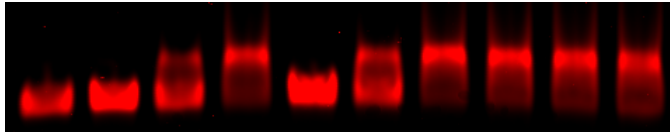


Fig. S1 . The cytokinin iP cannot dissociate Rv0078 from DNA. 6% TBE gel was imaged using a LI-COR Odyssey imager. 10 mM MgCl₂ improved DNA binding.