

Supplementary Information

Phenolic compounds from *Belamcanda chinensis* seeds

Ying-Ying Song^{1,2}, Ying Liu³, Yong-Ming Yan³, Xi-Feng Lu^{3*} and Yong-Xian Cheng^{3,4*}

¹ *State Key Laboratory of Phytochemistry and Plant Resources in West China, Kunming Institute of Botany, Chinese Academy of Sciences, Kunming 650201, China; songyingying@mail.kib.ac.cn*

² *University of Chinese Academy of Sciences, Beijing 100049, China*

³ *Guangdong Key Laboratory for Genome Stability & Disease Prevention, School of Pharmaceutical Sciences, Shenzhen University Health Science Center, Shenzhen 518060, China; cdzyb083@sina.com (Y.L.); yanym@szu.edu.cn (Y.-M.Y.)*

⁴ *College of Pharmacy, Henan University of Chinese Medicine, Zhengzhou 450008, China*

* Correspondence: x.lu@szu.edu.cn (X.-F.L.); yxcheng@szu.edu.cn (Y.-X.C.);
Tel./Fax: (+86) 0755-8671-3994

Content

- Figure S1. GC analysis of the derivative of D-fructose
- Figure S2. GC analysis of the derivative of L- fructose
- Figure S3. GC analysis of the derivativ of D-glucose
- Figure S4. GC analysis of the derivative of L-glucose
- Figure S5. GC analysis of the derivative of compound **1** after hydrolysis
- Figure S6. GC analysis of the derivative of compound **2** after hydrolysis
- Figure S7. The ^1H NMR spectrum of **1** in CD_3OD
- Figure S8. The ^{13}C NMR and DEPT spectra of **1** in CD_3OD
- Figure S9. ^1H - ^1H COSY spectrum of **1** in CD_3OD
- Figure S10. HSQC spectrum of **1** in CD_3OD
- Figure S11. HMBC spectrum of **1** in CD_3OD
- Figure S12. ROESY spectrum of **1** in CD_3OD
- Figure S13. CD spectrum of **1**
- Figure S14. UV spectrum of **1**
- Figure S15. HRESIMS of **1**
- Figure S16. The ^1H NMR spectrum of **2** in CD_3OD
- Figure S17. The ^{13}C NMR and DEPT spectra of **2** in CD_3OD
- Figure S18. ^1H - ^1H COSY spectrum of **2**
- Figure S19. HSQC spectrum of **2**
- Figure S20. HMBC spectrum of **2**
- Figure S21. ROESY spectrum of **2**
- Figure S22. CD spectrum of **2**
- Figure S23. UV spectrum of **2**
- Figure S24. HRESIMS of **2**

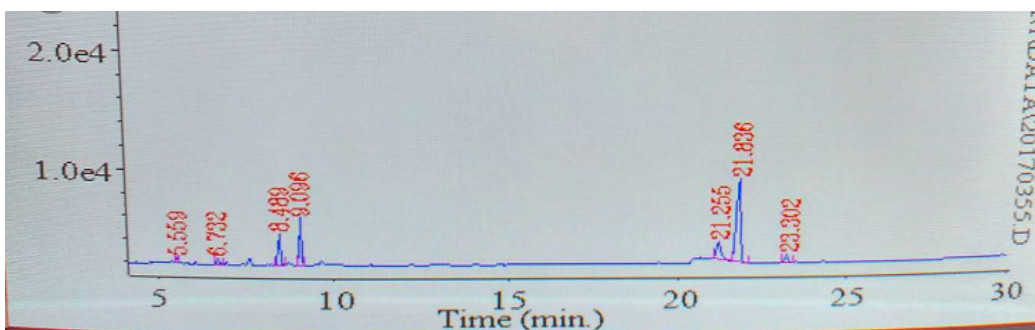


Figure S4. GC analysis of the derivative of L-glucose

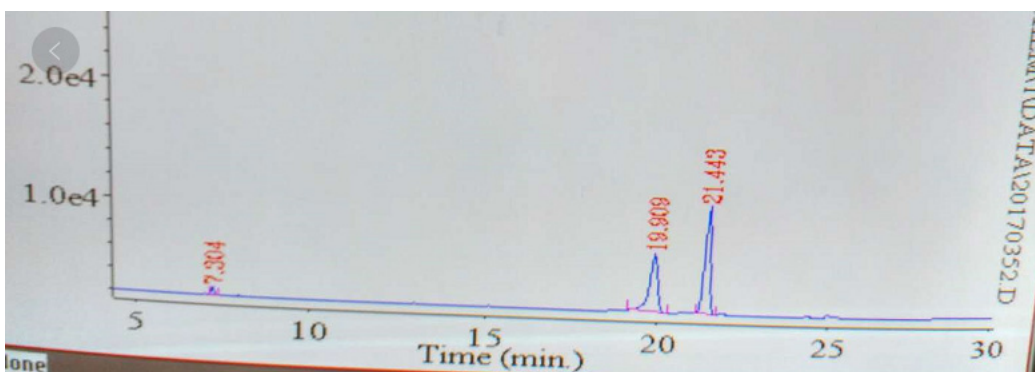


Figure S5. GC analysis of the derivative of compound 1 after hydrolysis

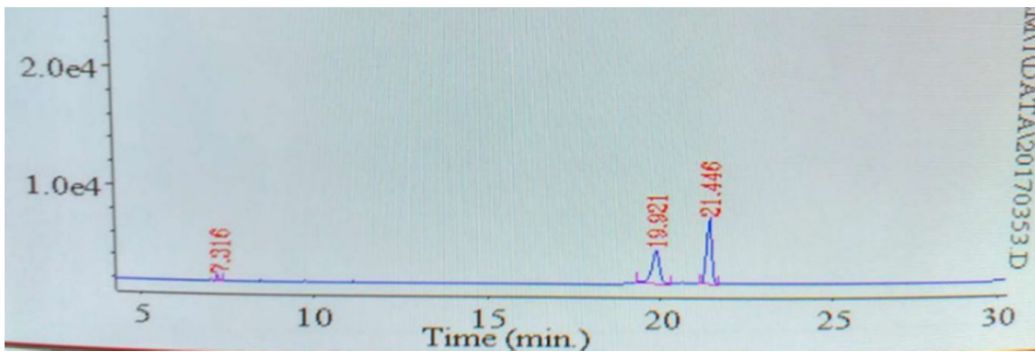


Figure S6. GC analysis of the derivative of compound 2 after hydrolysis

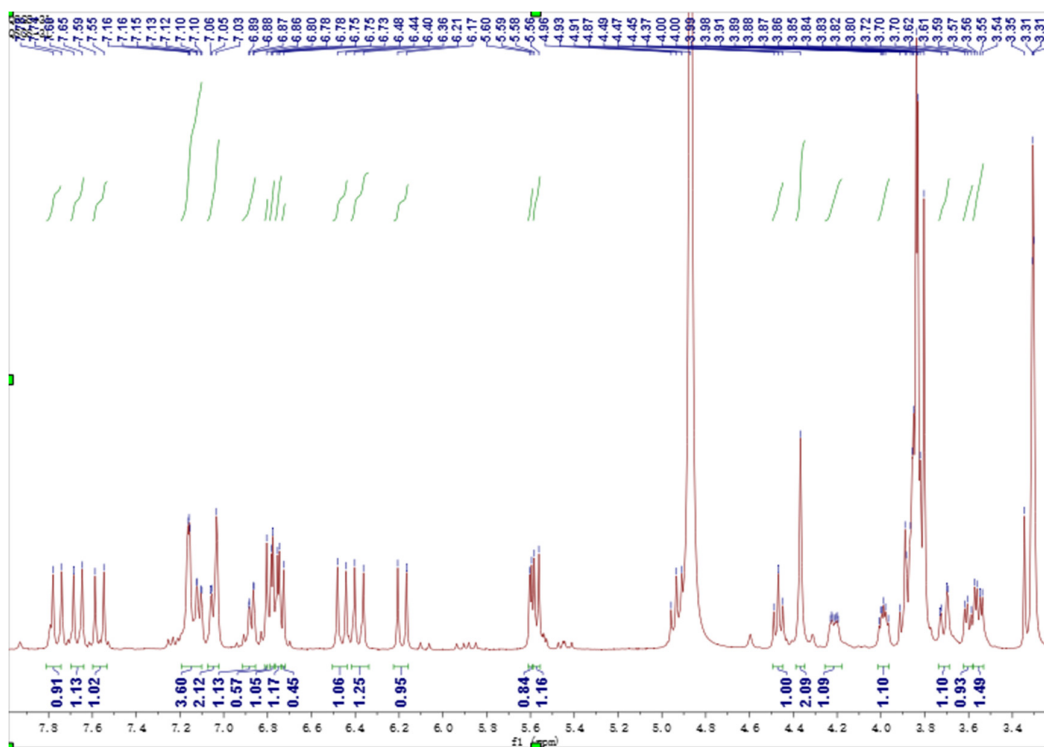


Figure S7. The ^1H NMR spectrum of **1** in CD_3OD

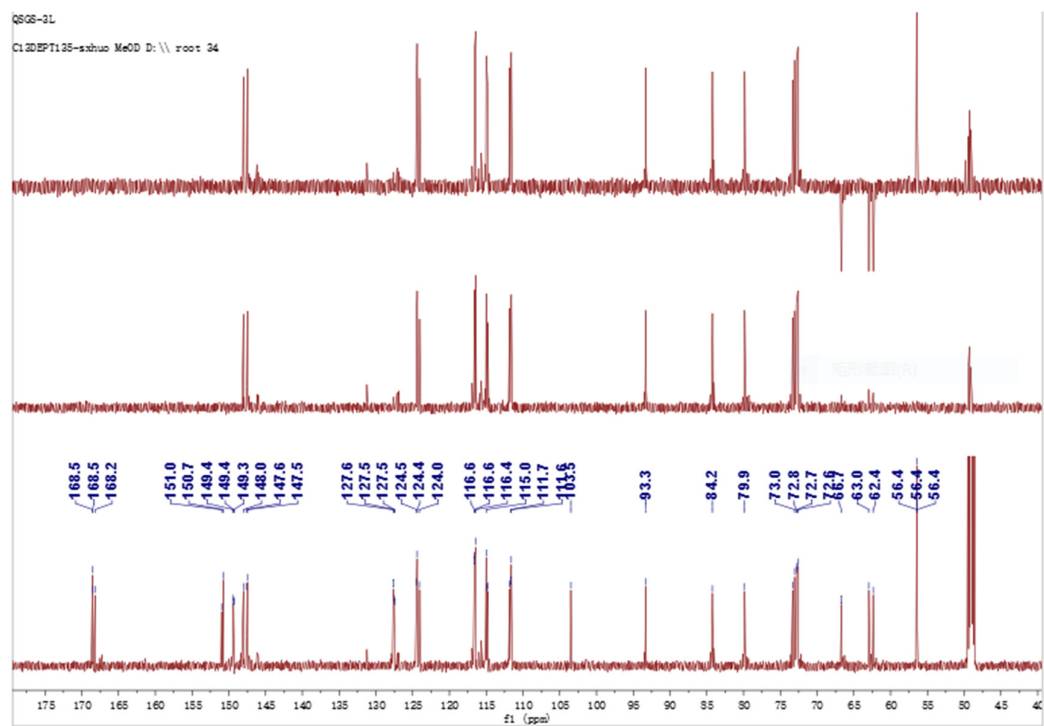


Figure S8. The ^{13}C NMR and DEPT spectra of **1** in CD_3OD

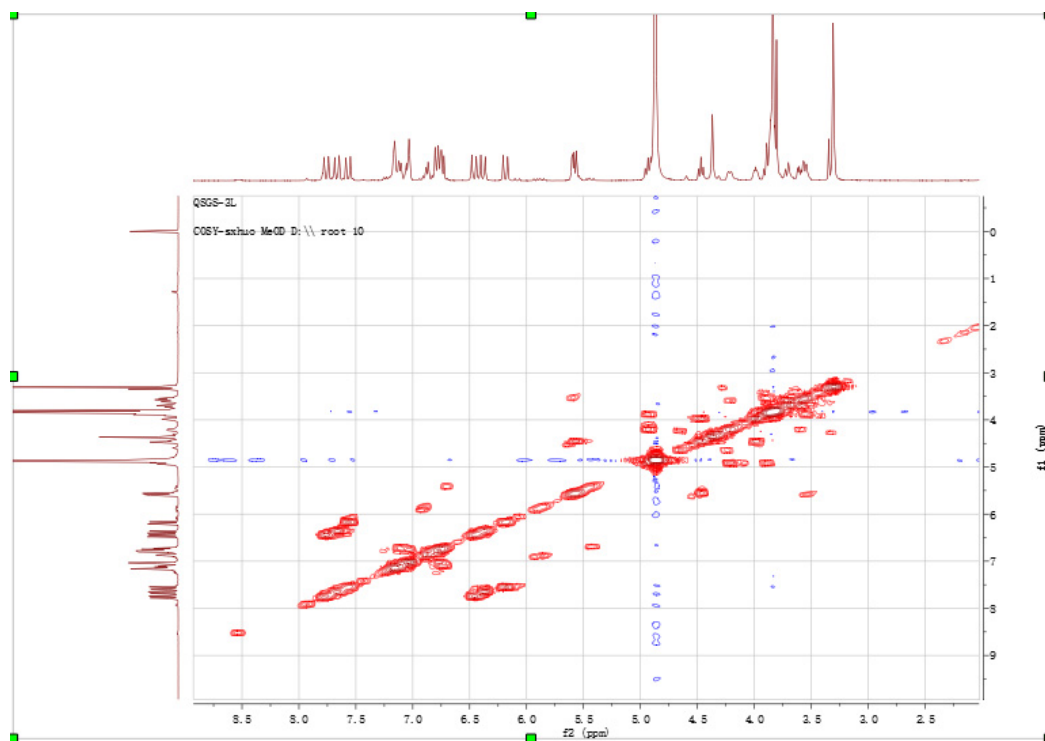


Figure S9. ^1H - ^1H COSY spectrum of **1** in CD_3OD

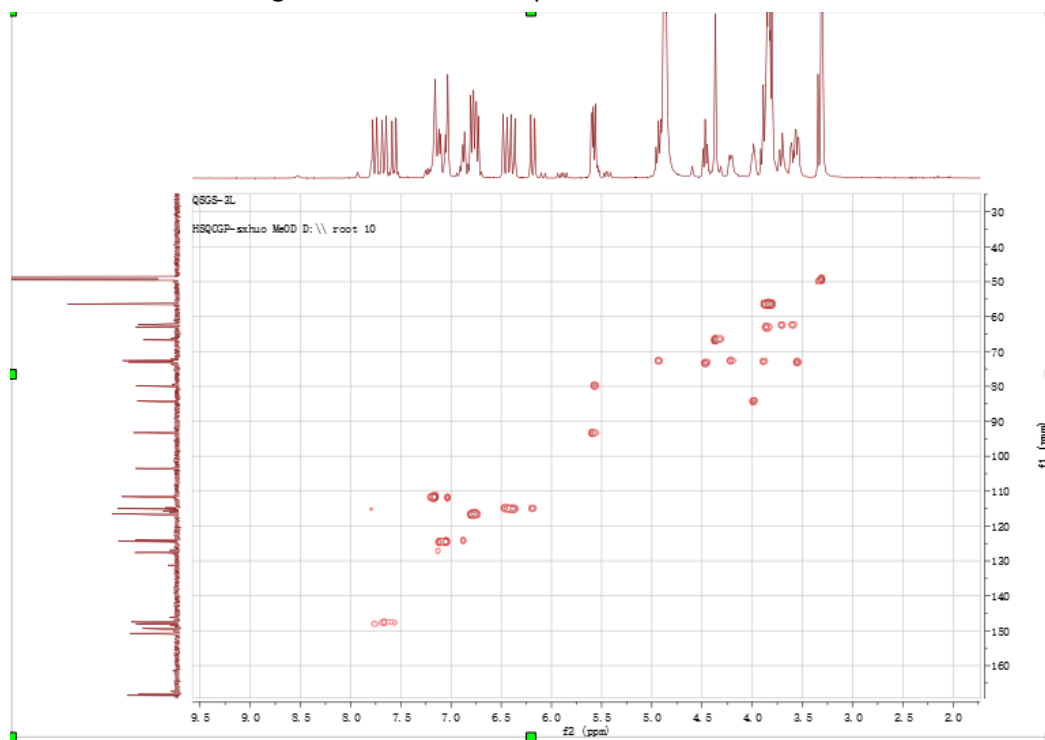


Figure S10. HSQC spectrum of **1** in CD_3OD

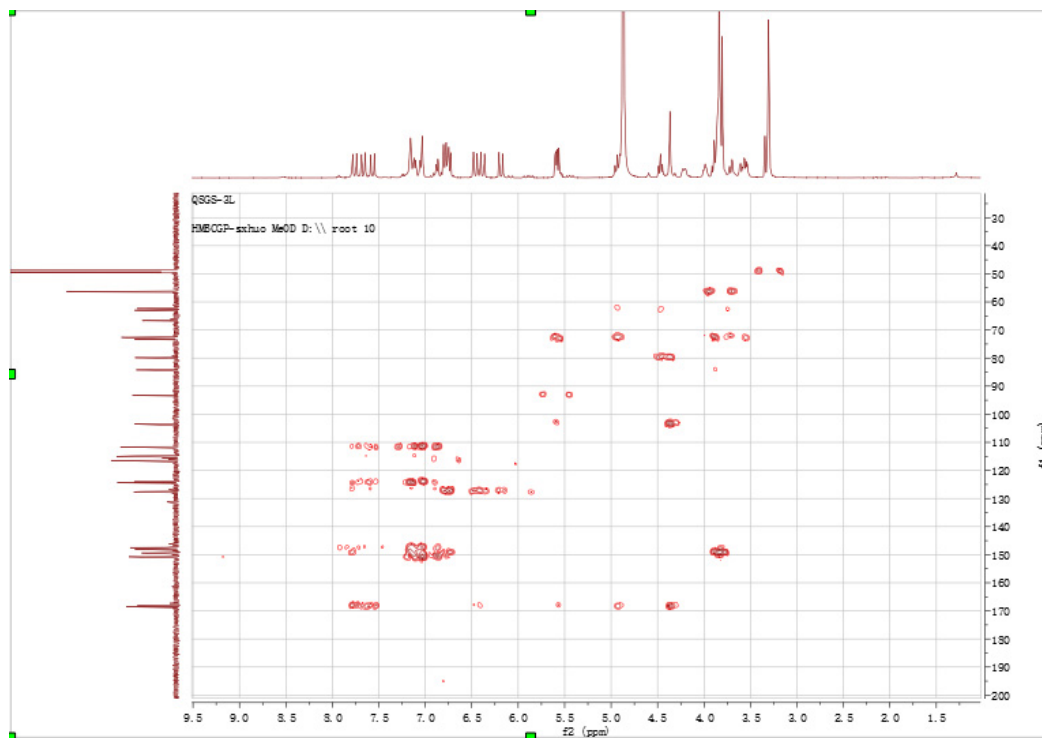


Figure S11. HMBC spectrum of **1** in CD₃OD

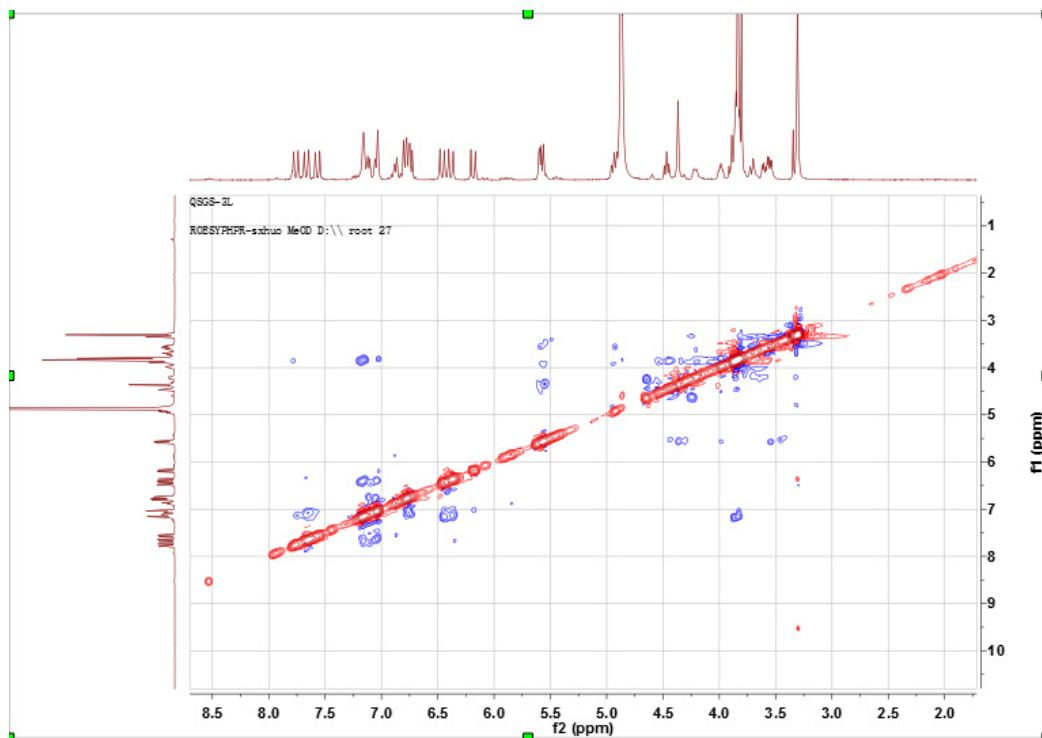


Figure S12. ROESY spectrum of **1** in CD₃OD

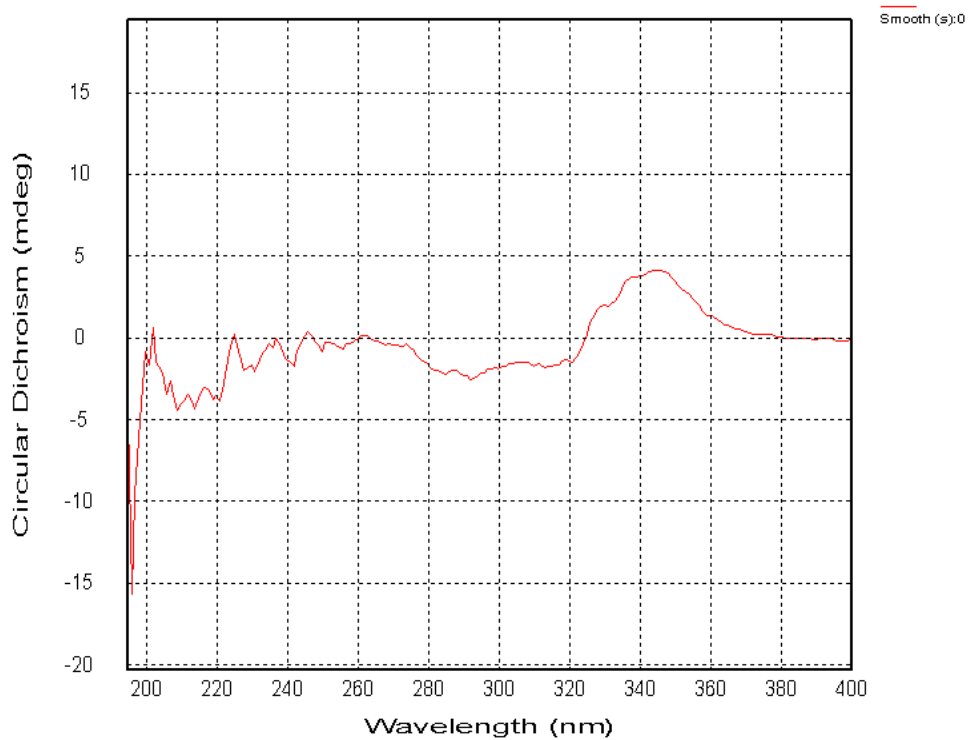


Figure S13. CD spectrum of **1**

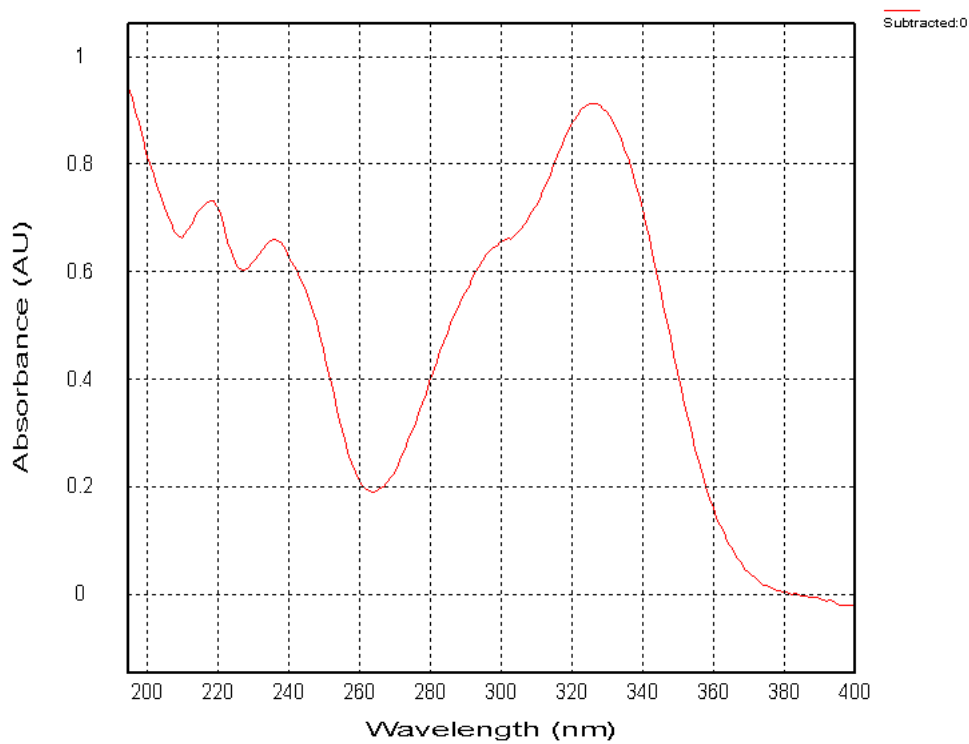


Figure S14. UV spectrum of 1

Formula Predictor Report - QSGS-3L.lcd

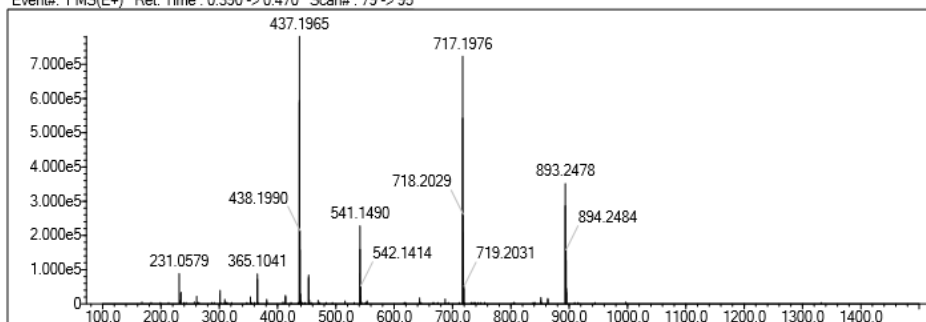
Page 1 of 1

Data File: E:\DATA\2017\0927\QSGS-3L.lcd

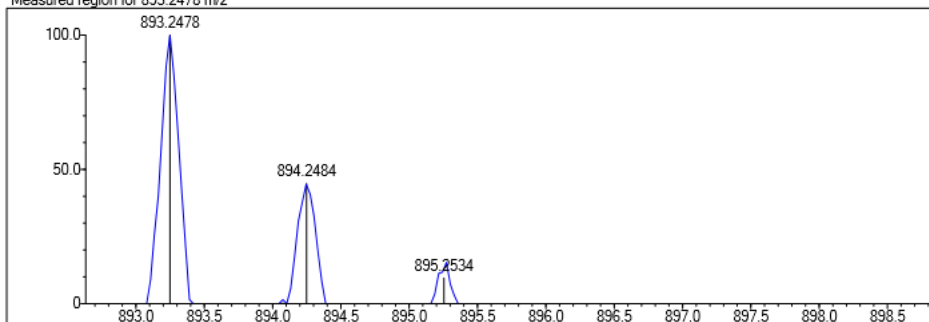
Elmt	Val.	Min	Max	Elmt	Val.	Min	Max	Elmt	Val.	Min	Max	Elmt	Val.	Min	Max	Use Adduct
H	1	0	100	O	2	0	50	P	3	0	0	Br	1	0	0	Na
B	3	0	0	F	1	0	0	S	2	0	5	I	3	0	0	
C	4	0	100	Na	1	0	0	Cl	1	0	0	Pt	2	0	0	
N	3	0	0	Mg	2	0	0	Fe	2	0	0					

Error Margin (ppm): 5
 DBE Range: -2.0 - 100.0
 Electron Ions: both
 HC Ratio: unlimited
 Apply N Rule: yes
 Use MSn Info: yes
 Max Isotopes: all
 Isotope RI (%): 1.00
 Isotope Res: 10000
 MSn Iso RI (%): 75.00
 MSn Logic Mode: AND
 Max Results: 10

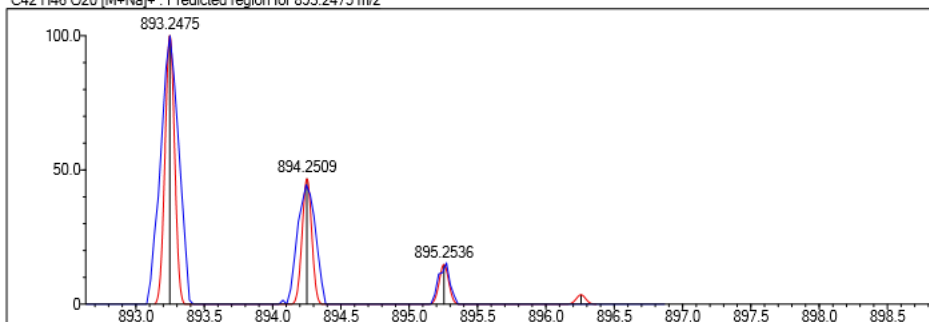
Event#: 1 MS(E+) Ret. Time : 0.390 -> 0.470 Scan#: 79 -> 95



Measured region for 893.2478 m/z



C42 H46 O20 [M+Na]+ : Predicted region for 893.2475 m/z



Formula (M)	Ion	Meas. m/z	Pred. m/z	Df. (mDa)	Df. (ppm)	DBE
C42 H46 O20	[M+Na]+	893.2478	893.2475	0.3	0.34	20.0

Figure S15. HRESIMS of 1

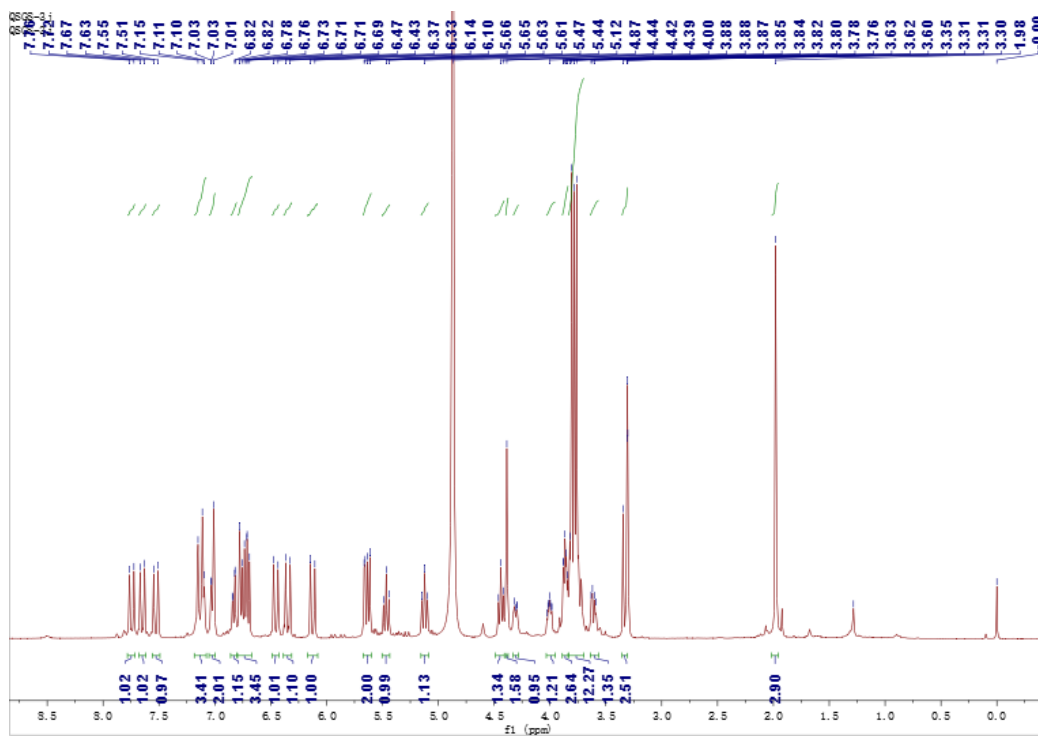


Figure S16. The ^1H NMR spectrum of **2** in CD_3OD

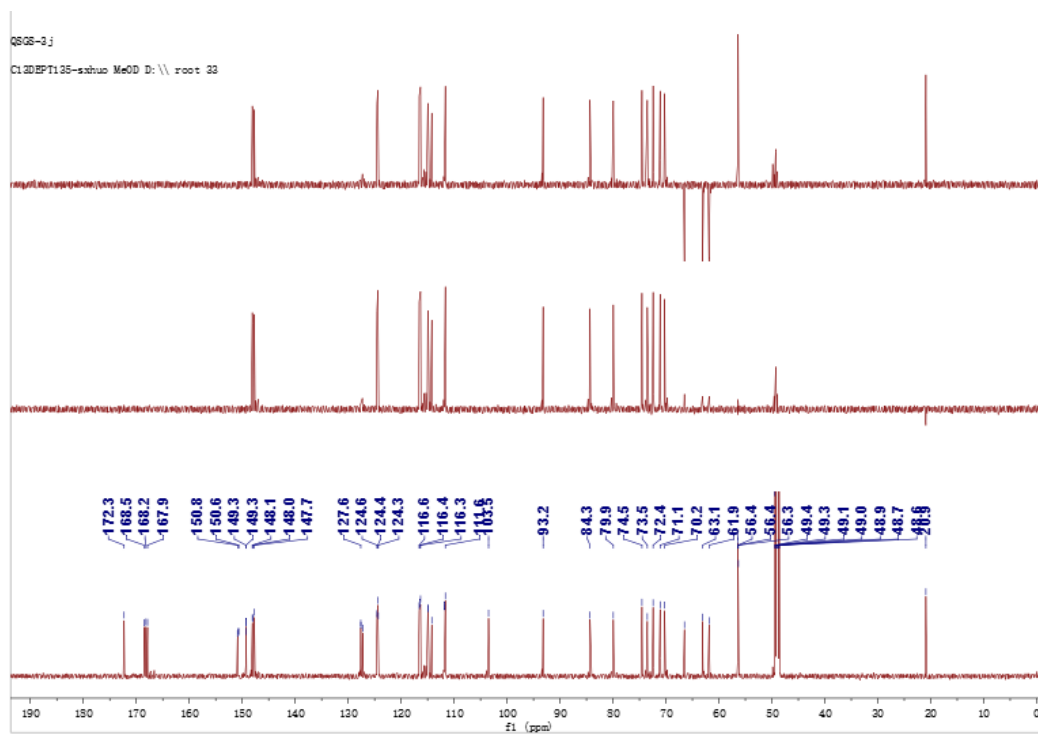


Figure S17. The ^{13}C NMR and DEPT spectra of **2** in CD_3OD

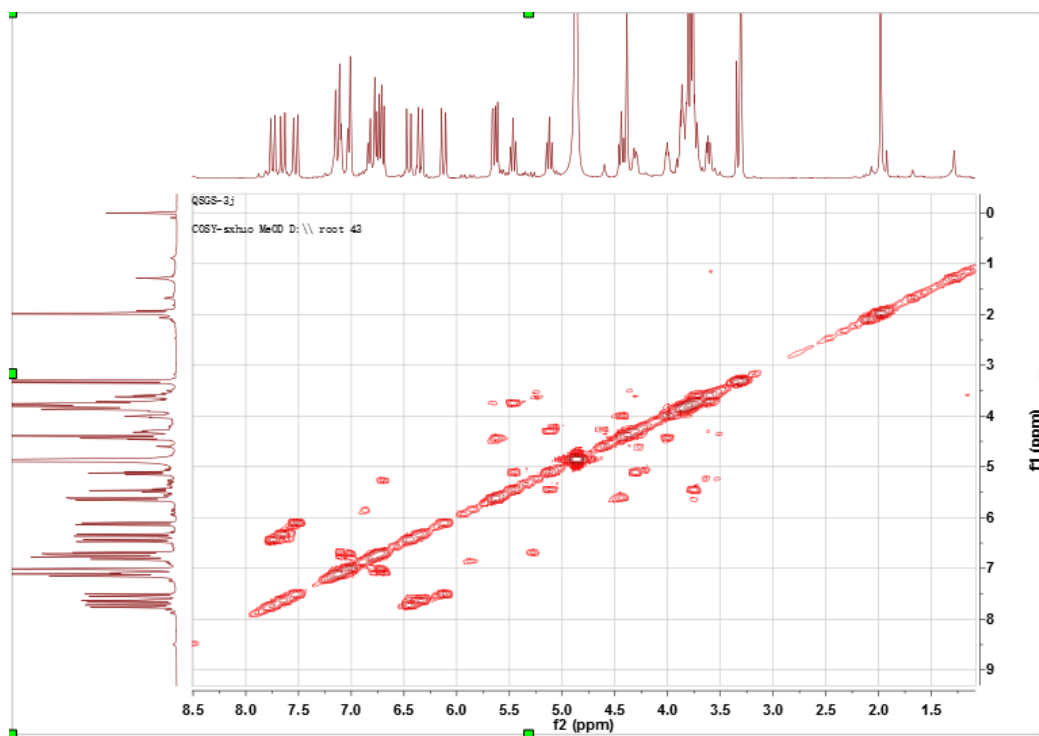


Figure S18. ^1H - ^1H COSY spectrum of **2**

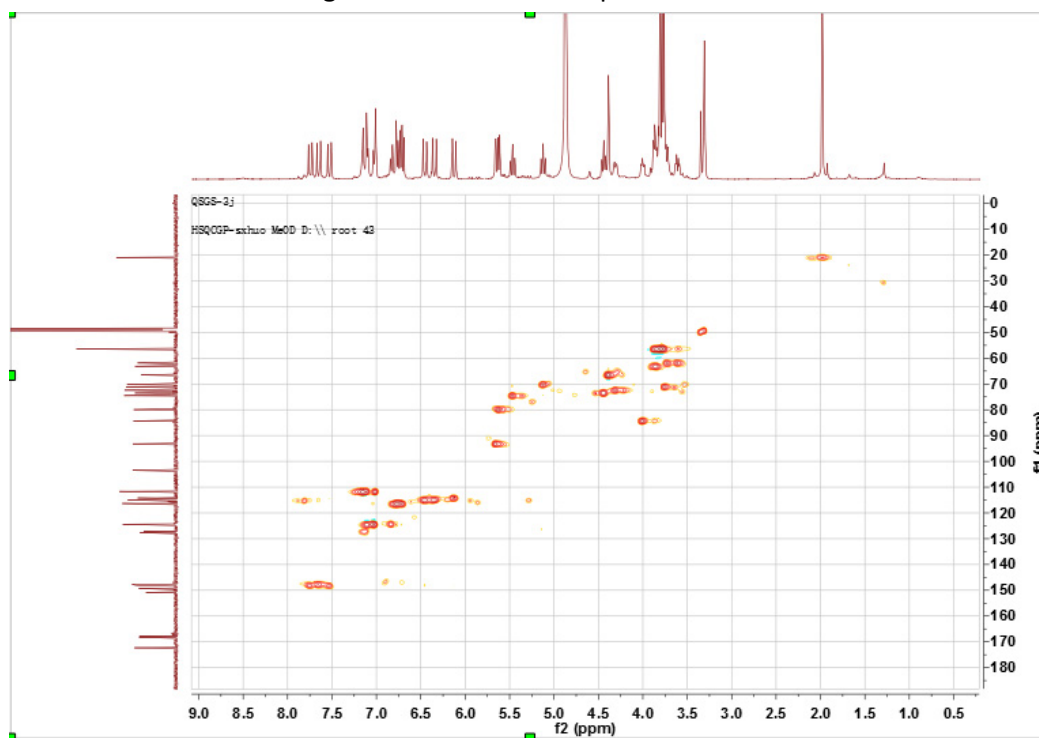


Figure S19. HSQC spectrum of **2**

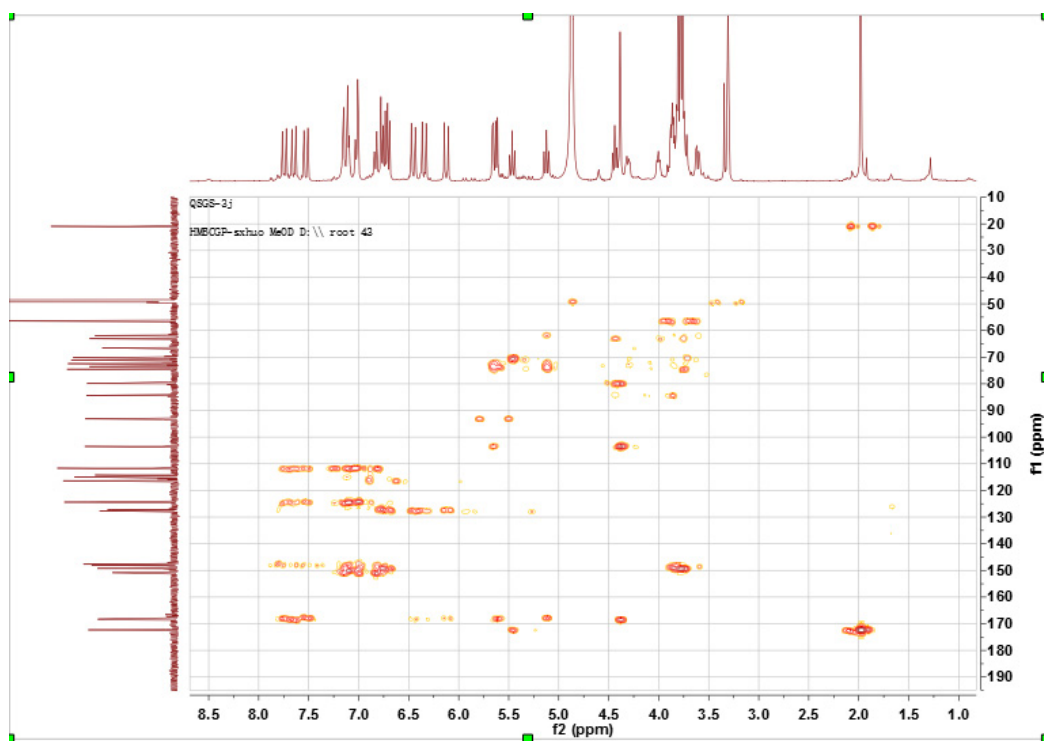


Figure S20. HMBC spectrum of **2**

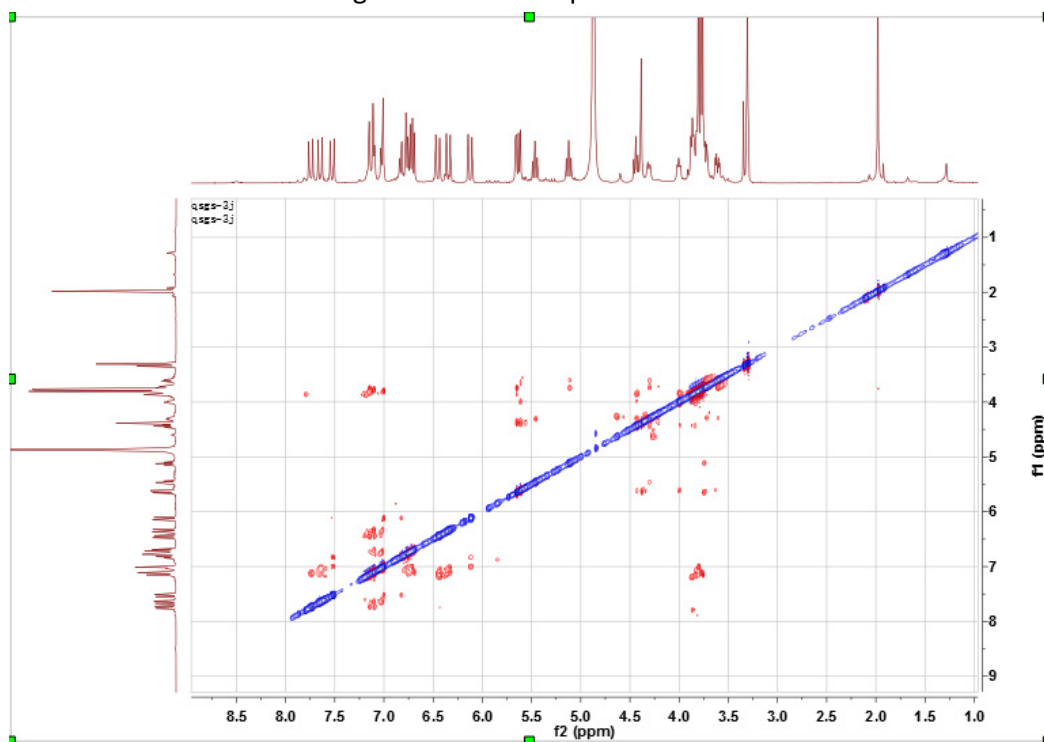


Figure S21. ROESY spectrum of **2**

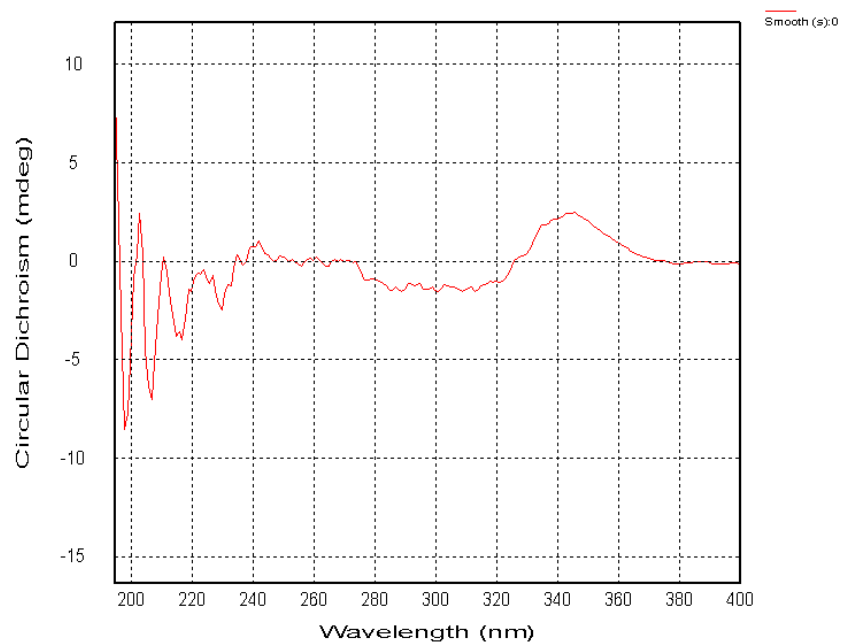


Figure S22. CD spectrum of **2**

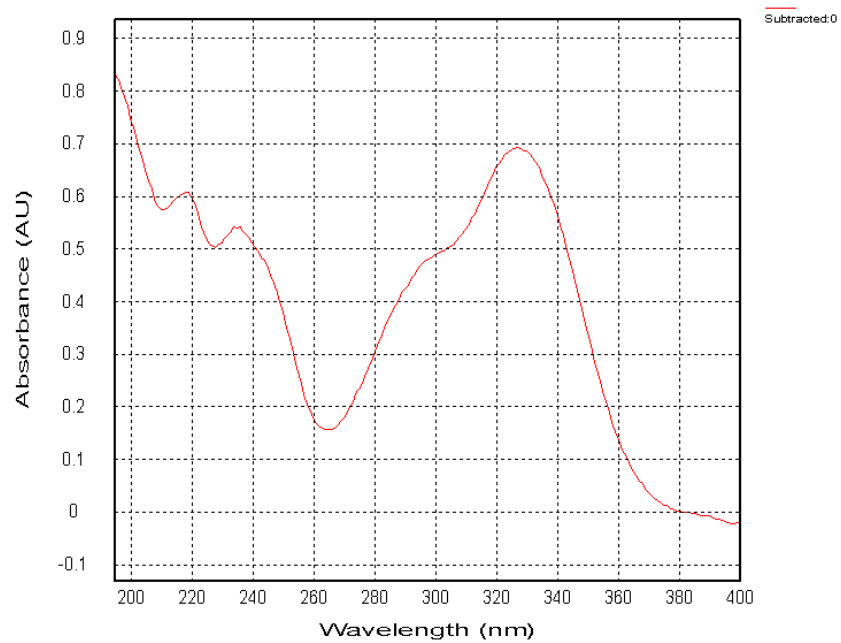


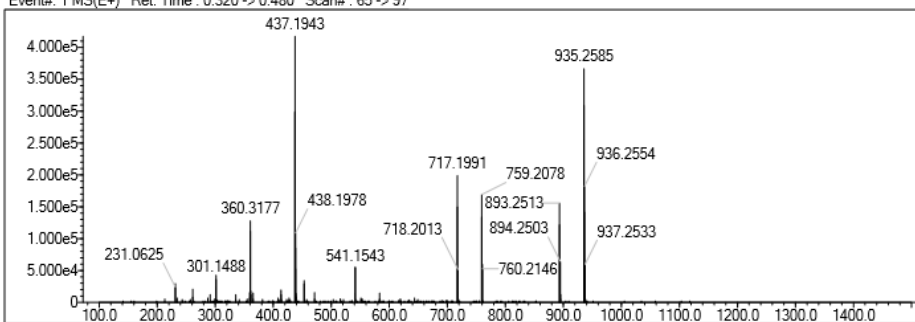
Figure S23. UV spectrum of **2**

Data File: E:\DATA\2017\0927\QSGS-3j.lcd

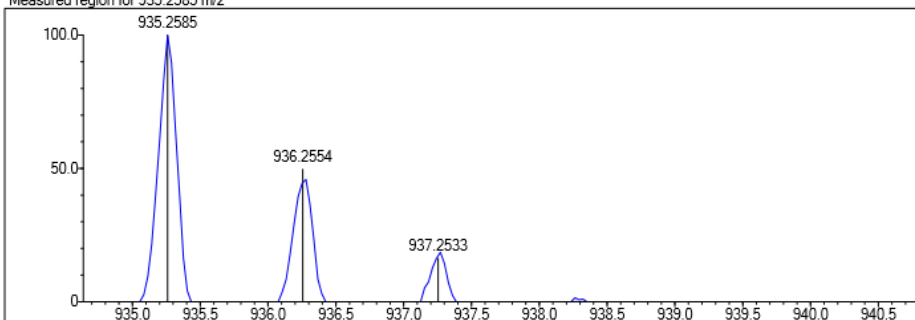
Elmt	Val.	Min	Max	Elmt	Val.	Min	Max	Elmt	Val.	Min	Max	Elmt	Val.	Min	Max	Use Adduct
H	1	0	100	O	2	0	50	P	3	0	0	Br	1	0	0	Na
B	3	0	0	F	1	0	0	S	2	0	5	I	3	0	0	
C	4	0	100	Na	1	0	0	Cl	1	0	0	Pt	2	0	0	
N	3	0	0	Mg	2	0	0	Fe	2	0	0					

Error Margin (ppm): 5
 DBE Range: -2.0 - 100.0
 Electron Ions: both
 HC Ratio: unlimited
 Apply N Rule: yes
 Use MSn Info: yes
 Max Isotopes: all
 Isotope RI (%): 1.00
 MSn Iso RI (%): 75.00
 MSn Logic Mode: AND
 Isotope Res: 10000
 Max Results: 10

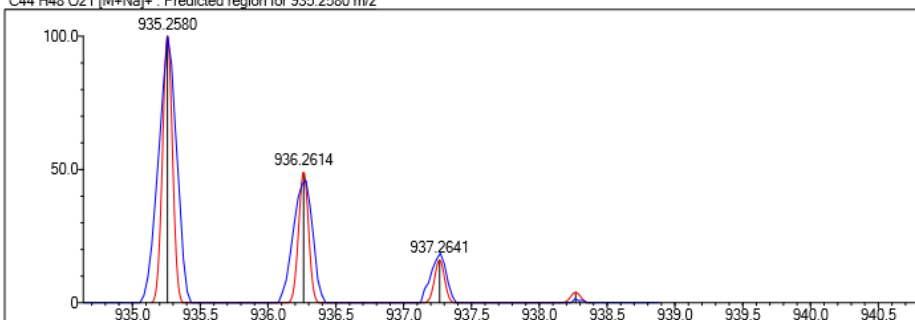
Event#: 1 MS(E+) Ret. Time : 0.320 -> 0.480 Scan#: 65 -> 97



Measured region for 935.2585 m/z



C44 H48 O21 [M+Na]+ : Predicted region for 935.2580 m/z



Formula (M)	Ion	Meas. m/z	Pred. m/z	Df. (mDa)	Df. (ppm)	DBE
C44 H48 O21	[M+Na]+	935.2585	935.2580	0.5	0.53	21.0

Figure S24. HRESIMS of 2