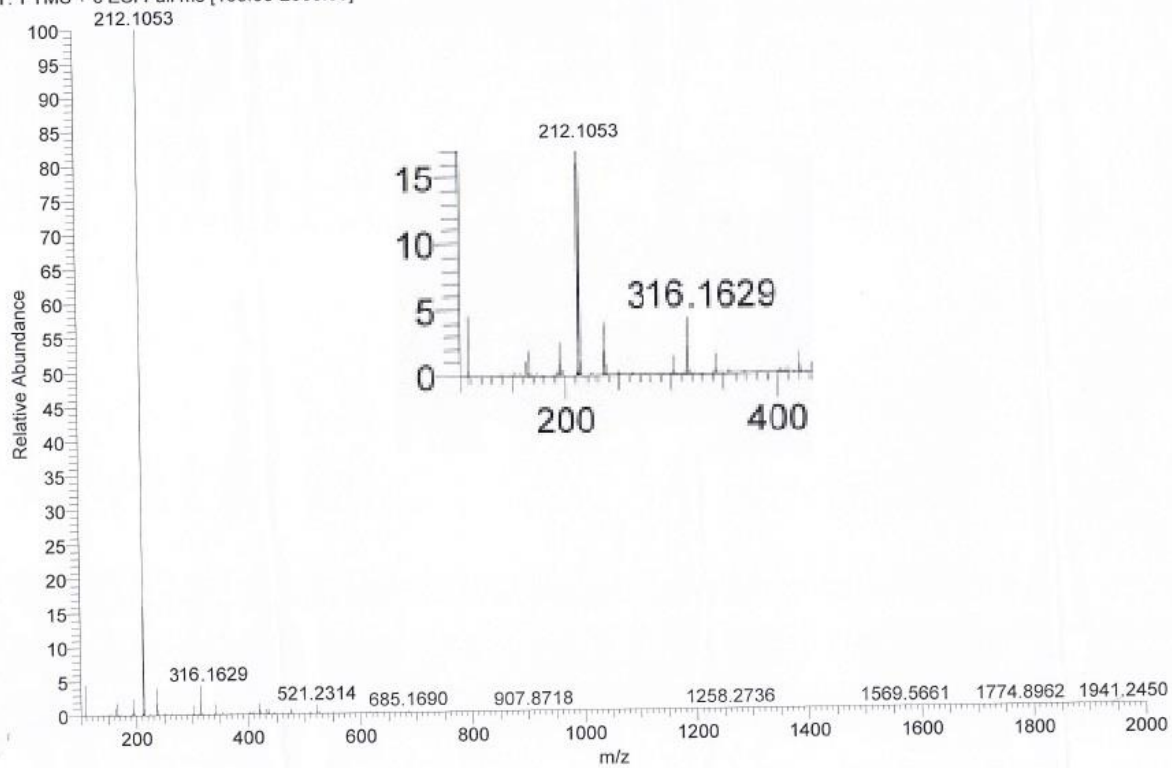
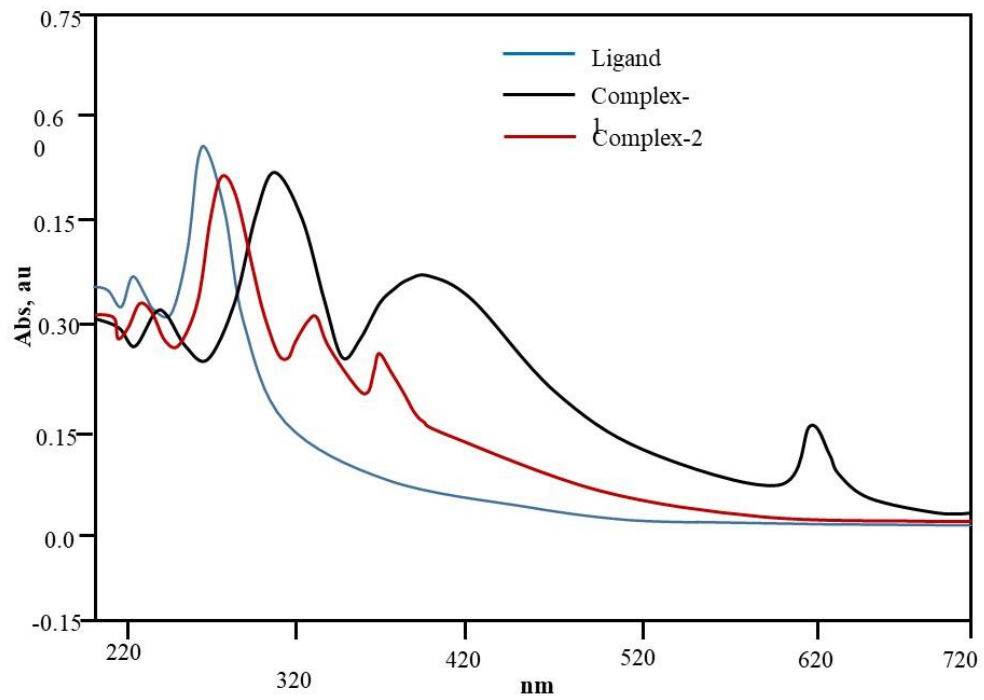


BCC1\_160517124725 #5-7 RT: 0.12-0.17 AV: 3 SB: 6 0.45-0.53, 0.01-0.03 NL: 1.86E8  
T: FTMS + c ESI Full ms [100.00-2000.00]



Supplementary Information Figure S1. ESI-MS spectrum of ligand, HL



Supplementary Information Figure S2. UV/Vis spectra of ligand and complexes 1 and 2