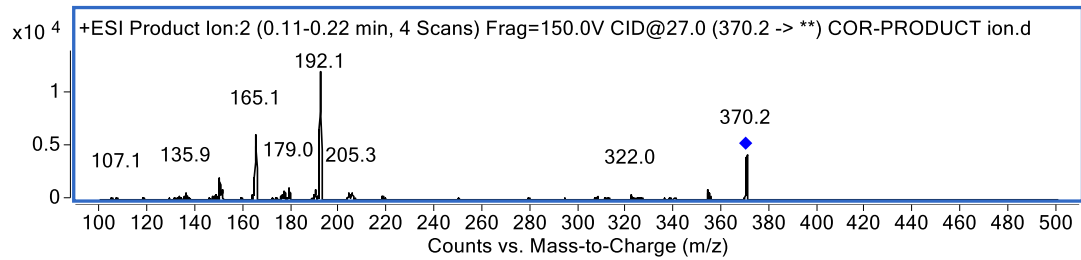
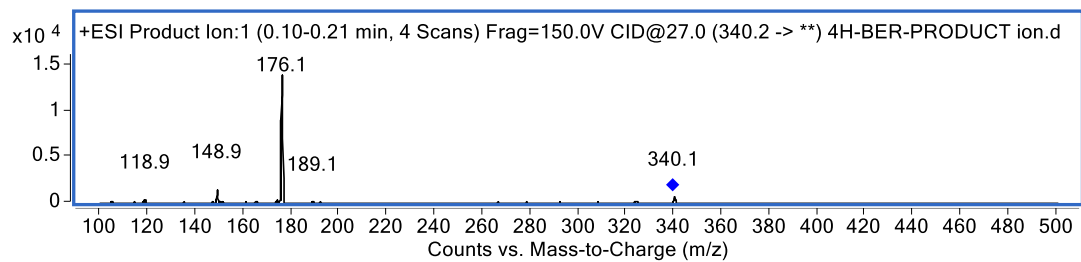


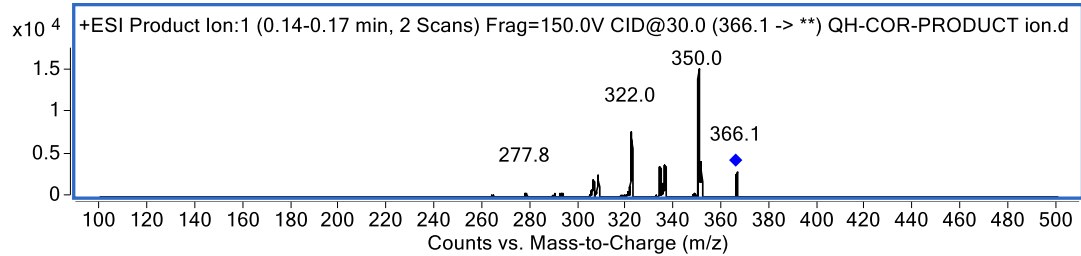
(1) Corydaline



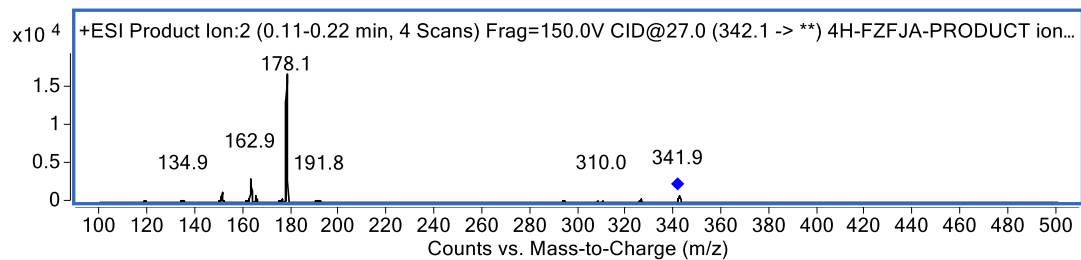
(2) Tetrahydroberberine



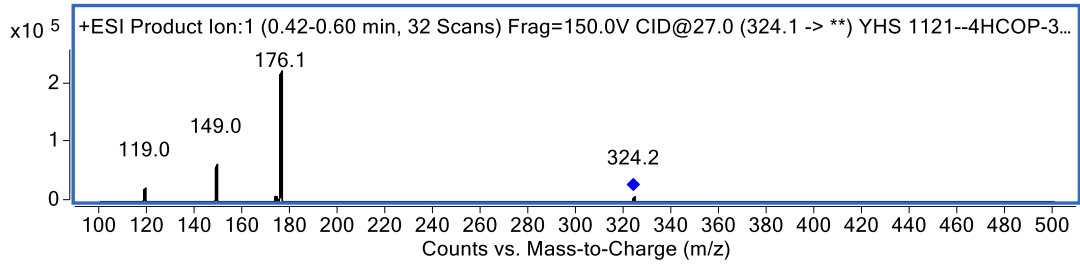
(3) Tetrahydropalmatine



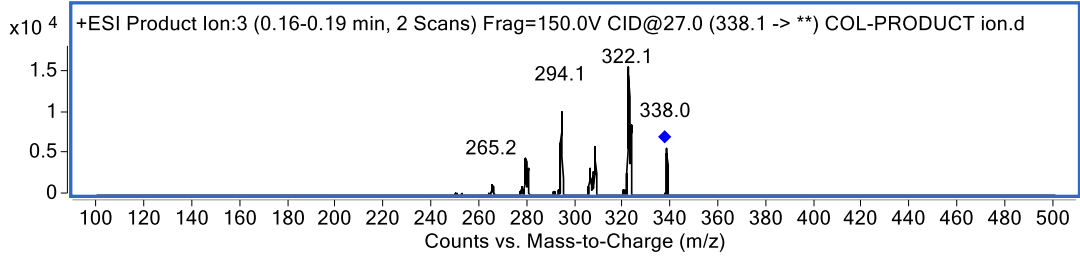
(4) Tetrahydrocolumbamine



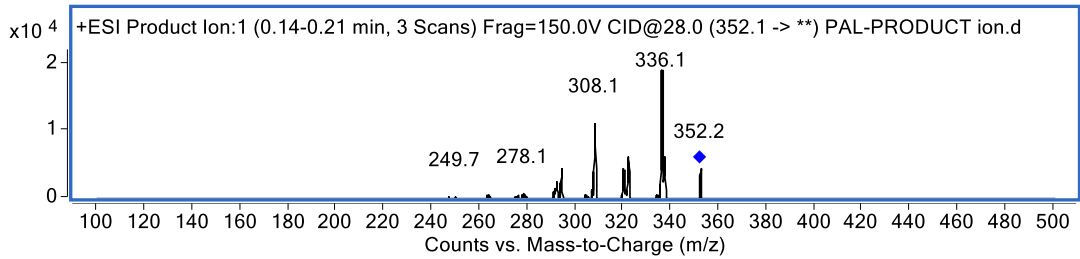
(5) Tetrahydrocoptisine



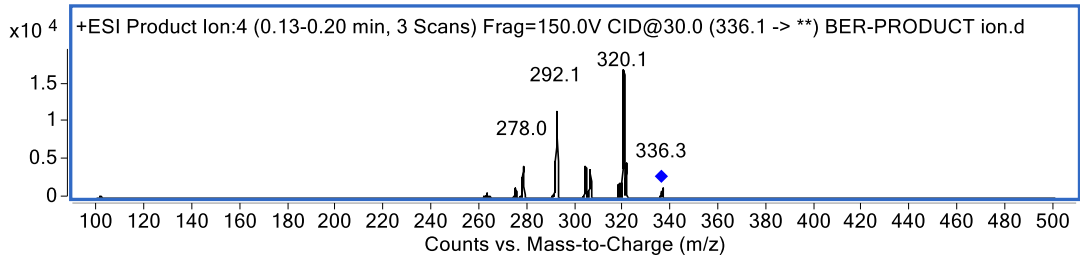
(6) Columbamine



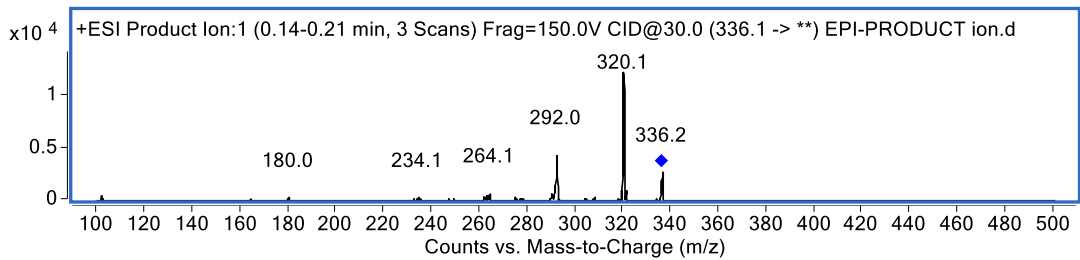
(7) Palmatine



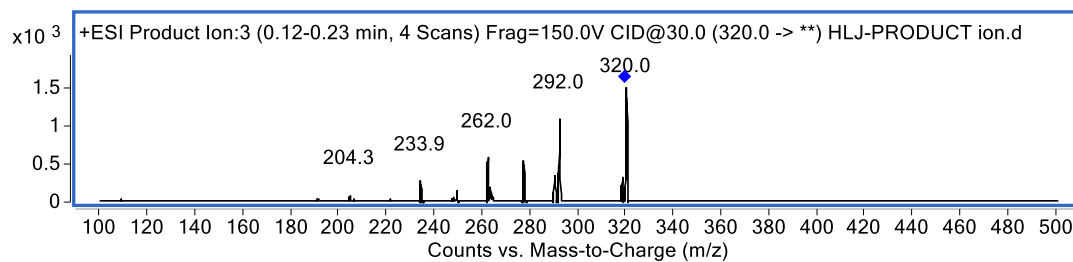
(8) Berberine



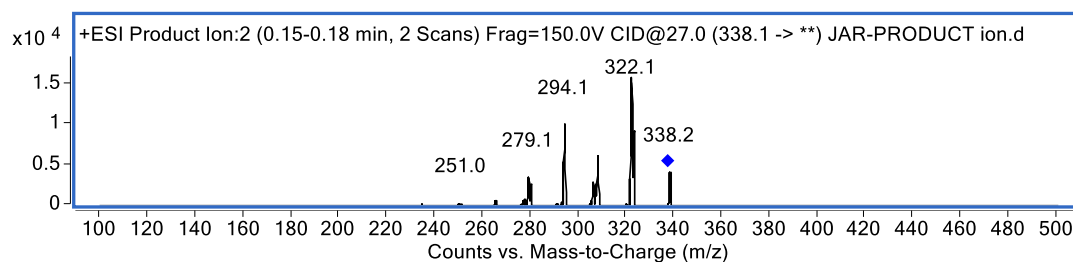
(9) Epiberberine



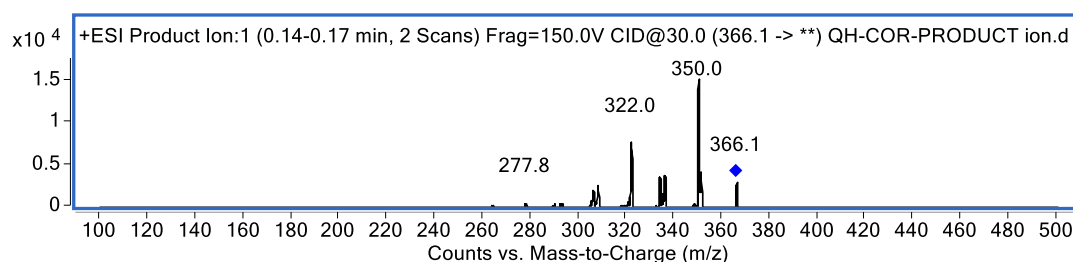
(10) Coptisine



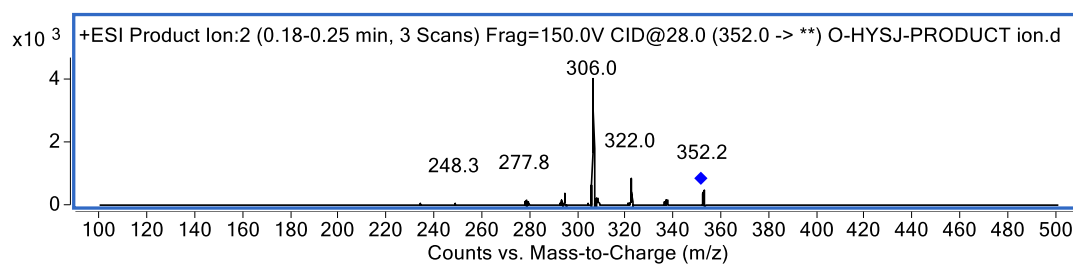
(11) Jatrorrhizine



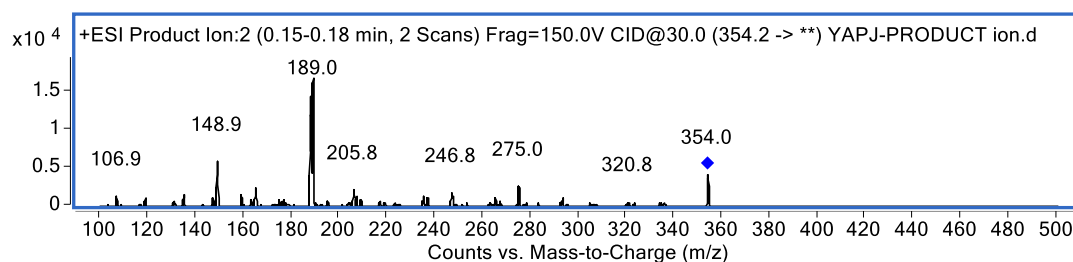
(12) Dehydrocorydaline



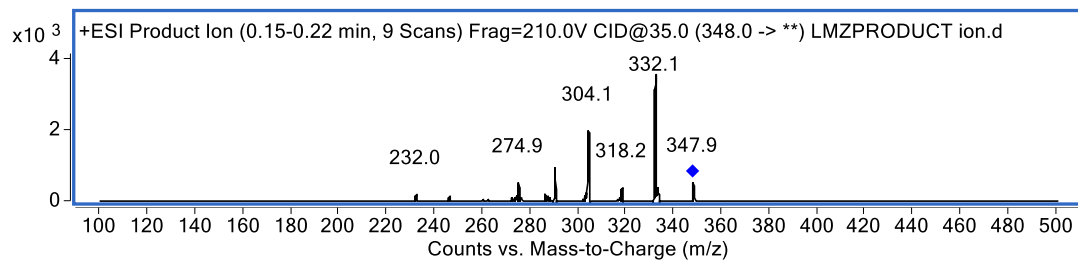
(13) Oxoglauicine



(14) Protopine

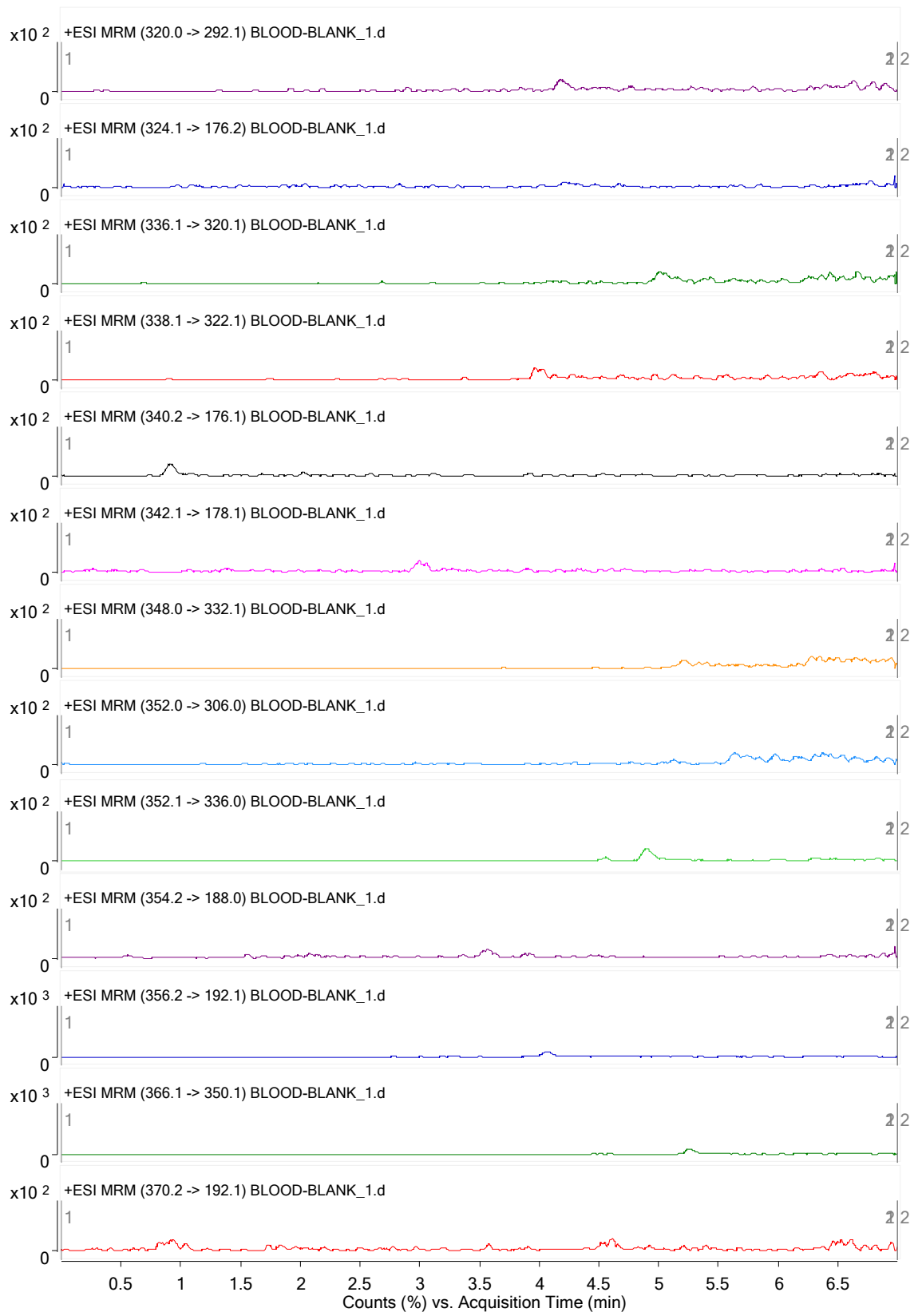


(IS) Nitidine chloride

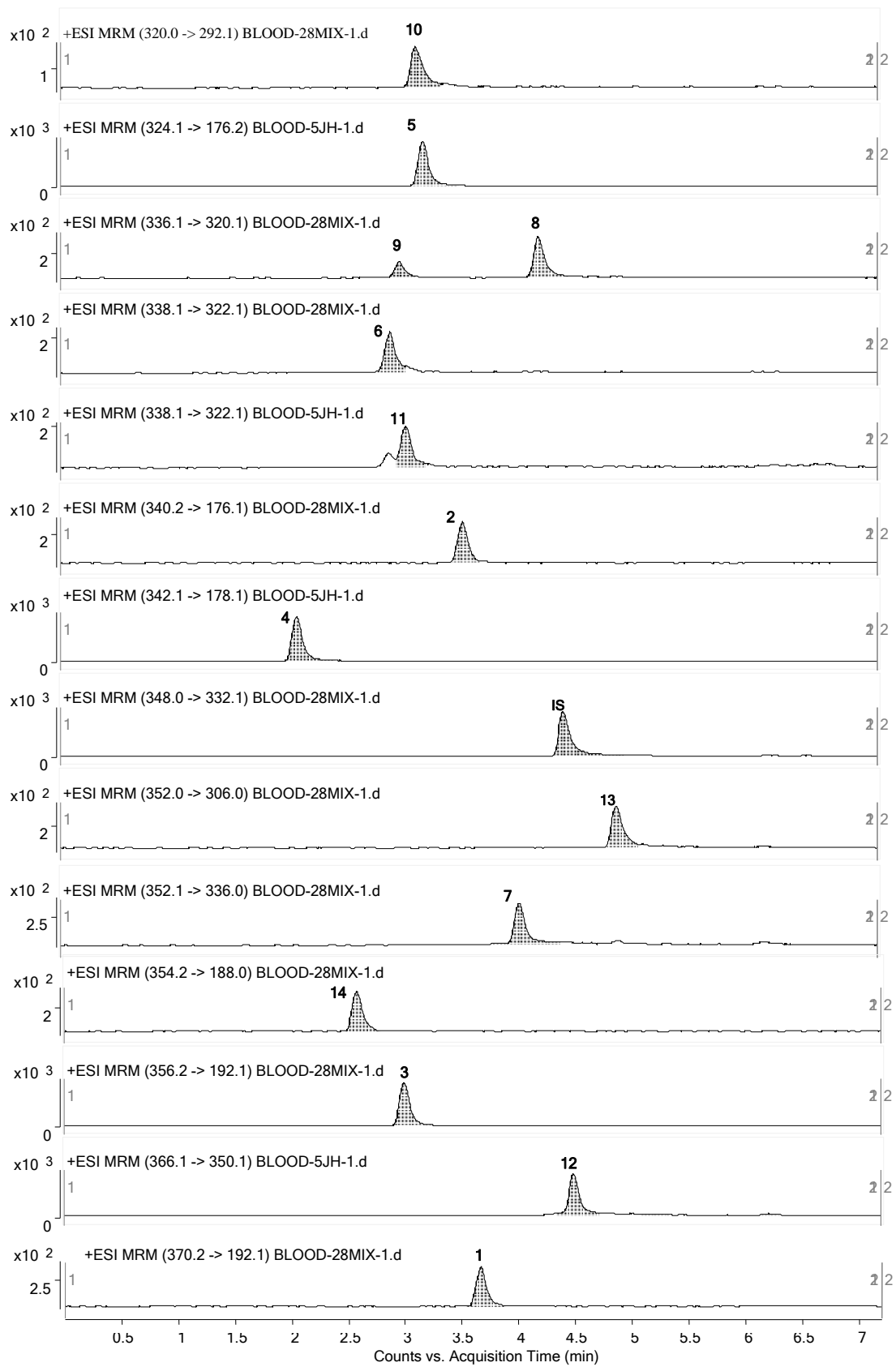


Supplementary Fig. S1 . Product ion electrospray mass scan spectra of the 14 alkaloid and IS.

A



B



Supplementary Fig. S2 . Representative MRM chromatograms of (A) blank plasma, and (B) blank plasma spiked with the analytes at LLOQ and IS.