

Seeded Blood Culture	Test	Time		
		0 hrs	12 hrs	24 hrs
1	Turbid	No	No	No
	Gram stain	NOS	NOS	GNR
	AMD neat	-	weak +	+++
	AMD centrifuged	-	weak +	+++
	Quantitative culture (CFU/ml)	0	1.4×10^5	7.3×10^7
2	Turbid	No	Yes	Yes
	Gram stain	NOS	NOS	GNR
	AMD neat	-	weak +	++
	AMD centrifuged	-	+	+++
	Quantitative culture (CFU/ml)	0	2.1×10^6	3.1×10^8
3	Turbid	No	No	Yes
	Gram stain	NOS	NOS	GNR
	AMD neat	-	weak +	++
	AMD centrifuged	-	+	+++
	Quantitative culture (CFU/ml)	0	1.8×10^6	1.6×10^8
4	Turbid	No	No	No
	Gram stain	NOS	NOS	GNR
	AMD neat	-	weak +	++
	AMD centrifuged	-	weak +	+++
	Quantitative culture (CFU/ml)	0	1.7×10^5	2.0×10^8

Note: NOS = no organisms seen; - = negative; + = positive.

Supplemental Table S1. Analytical sensitivity.

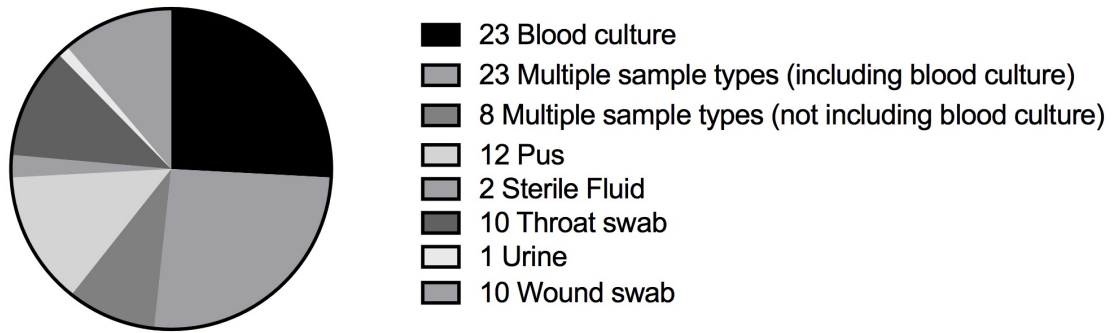
Organism	Reference Strain or Clinical isolate	AMD result
<i>Escherichia coli</i>	ATCC 25922	negative
<i>Klebsiella pneumoniae</i>	ATCC 700603	negative
<i>Klebsiella oxytoca</i>	NCTC 8167	negative
<i>Enterobacter aerogenes</i>	NCTC 10006	negative
<i>Enterobacter cloacae</i>	NCTC 11580	negative
<i>Citrobacter freundii</i>	NCTC 9750	negative
<i>Edwardsiella tarda</i>	NCTC 10396	negative
<i>Salmonella</i> Typhi	NCTC 786	negative
<i>Salmonella</i> Enteritidis	ATCC 13076	negative
<i>Pseudomonas aeruginosa</i>	ATCC 27853	negative
<i>Acinetobacter baumannii</i>	NCTC 12156	negative
<i>Ochrobactrum anthropi</i>	NCTC 12168	negative
<i>Aeromonas hydrophila</i>	NCTC 8049	negative
<i>Yersinia enterocolitica</i>	NCTC 11175	negative
<i>Vibrio cholerae</i>	NCTC 8021	negative
<i>Burkholderia thailandensis</i>	NR-9908 (E426)	negative
<i>Burkholderia cepacia</i>	NCTC 10743	negative
<i>Staphylococcus aureus</i>	ATCC 29213	negative
<i>Staphylococcus epidermidis</i>	NCTC 11047	negative
<i>Burkholderia thailandensis</i>	Soil isolate E555*	positive
<i>Burkholderia thailandensis</i>	Water isolate ST10*	positive
<i>Burkholderia pseudomallei</i>	Clinical isolate (blood culture UI27784)	positive
<i>Burkholderia pseudomallei</i>	Clinical isolate (blood culture UI28310)	positive
<i>Burkholderia pseudomallei</i>	Clinical isolate (blood culture FS4001)	positive
<i>Burkholderia pseudomallei</i>	Clinical isolate (blood culture FS4025)	positive
<i>Burkholderia cepacia</i>	Clinical isolate (sputum 39628**)	positive

*Known *B. pseudomallei* latex agglutination positive **Lao clinical isolate giving false positive latex agglutination result, confirmed as *B. cepacia* complex by API20NE and subsequent 16S sequencing.

Supplemental Table S2. Analytical specificity.

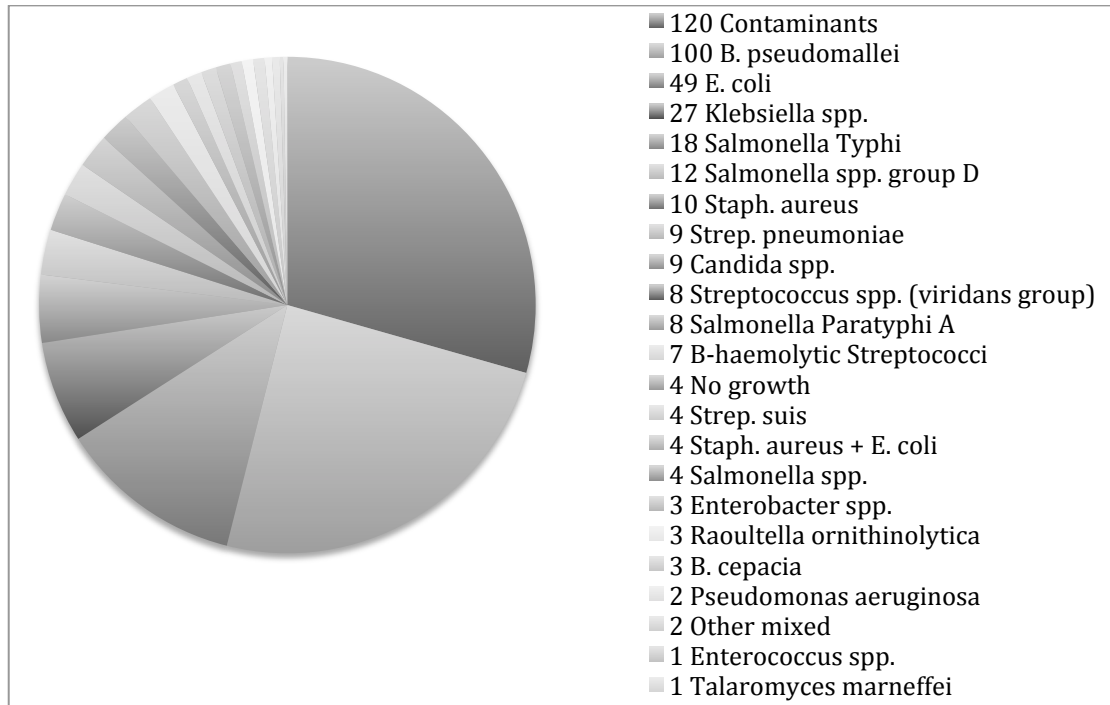
Report as:	X1000 magnification
Scanty	1-9 bacilli per slide/ 100 fields
1+	10-99 bacilli per slide/ 100 fields
2+	1-10 bacilli per field (check 50 fields)
3+	>10 bacilli per field (check 20 fields)

Supplemental Table S3. Schema for quantification of positive IFA results.

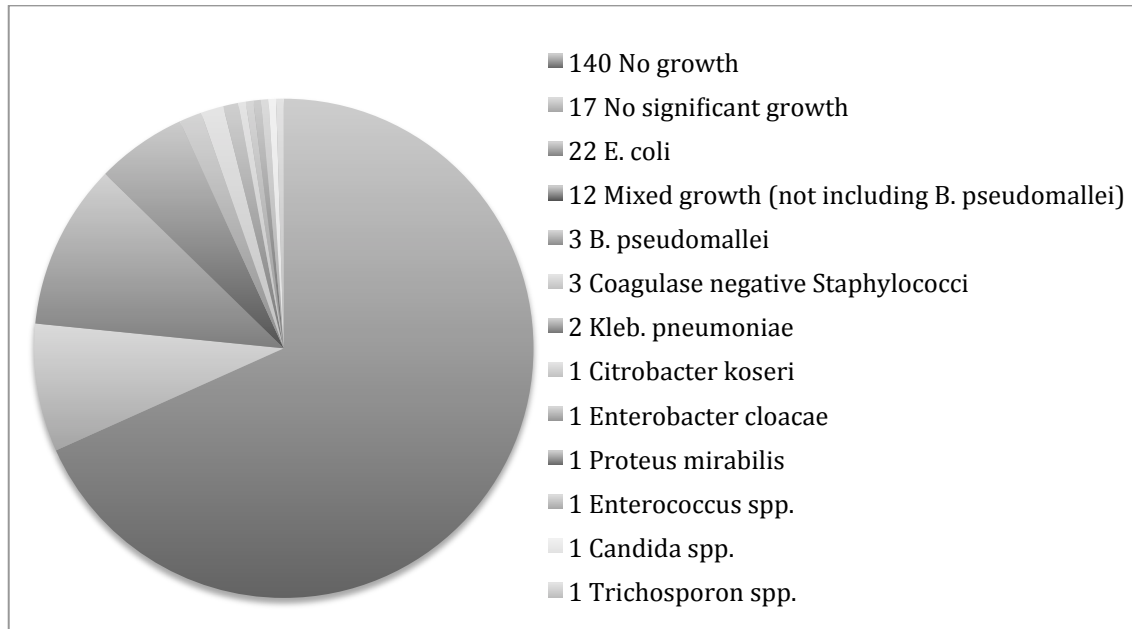


Supplemental Figure S1. Sample types culture positive for *B. pseudomallei*

in confirmed melioidosis cases June – December 2014 (N = 89).



Supplemental Figure S2. Organisms isolated from turbid blood culture broths 26th June – 18th December 2014 (N = 408 blood culture bottles from 247 patients).



Supplemental Figure S3. Organisms isolated from culture of unselected urine samples 2nd July – 2nd Sept. 2014 (N = 205).