

Supplementary file 1

Risk and temporal order of disease diagnosis of comorbidities in patients with COPD: a population health perspective

Ákos Tényi et al.

Content

Supplementary methods	2
Supplementary figures	3
Figure S1. Number of simultaneous diagnoses with COPD by disease group	3
Figure S2. Comparison of the age-associated prevalence.	5
Supplementary tables.....	6
Table S1. ICD9 codes considered for the diagnosis of COPD.	6
Table S2. ICD9 codes by disease groups and their descriptor.....	7
Table S3. Comorbidity risk in the CHSS and Medicare datasets.	76
Table S4. Proportion of chronic and acute disease in the Medicare dataset..	77
REFERENCES.....	78

Supplementary methods

Comorbidity was measured using co-occurrence based measures, the relative risk (RR) and phi-correlation (Φ) [1,2]. RR is expressed as the ratio between the actual observed number of patients with both diseases (C_{COPD,DG_i}) and the random expectation to see both disease appear together in the population (denominator):

$$RR_{COPD,DG_i} = \frac{C_{COPD,DG_i}}{P_{COPD} P_{DG_i}/N}$$

where C_{COPD,DG_i} is the number of cases affected by both COPD and the i th DG, P_{COPD} and P_{DG_i} denotes the patients with COPD and DG_i , respectively, in a population size N .

The Φ -correlation expresses the Pearson correlation coefficient for binary variables, i.e. between the COPD and disease group occurrences:

$$\Phi_{COPD,DG_i} = \frac{(N C_{COPD,DG_i}) - P_{COPD}P_{DG_i}}{\sqrt{P_{COPD}P_{DG_i}(N - P_{COPD})(N - P_{DG_i})}}$$

These two measures are complementary to each other as both have biases when estimating relationship strength, such that RR overestimates relationships of low prevalence diseases and underestimates the relation of highly prevalent diseases, whereas Φ can underestimate highly associated diseases with different prevalence.

Supplementary figures

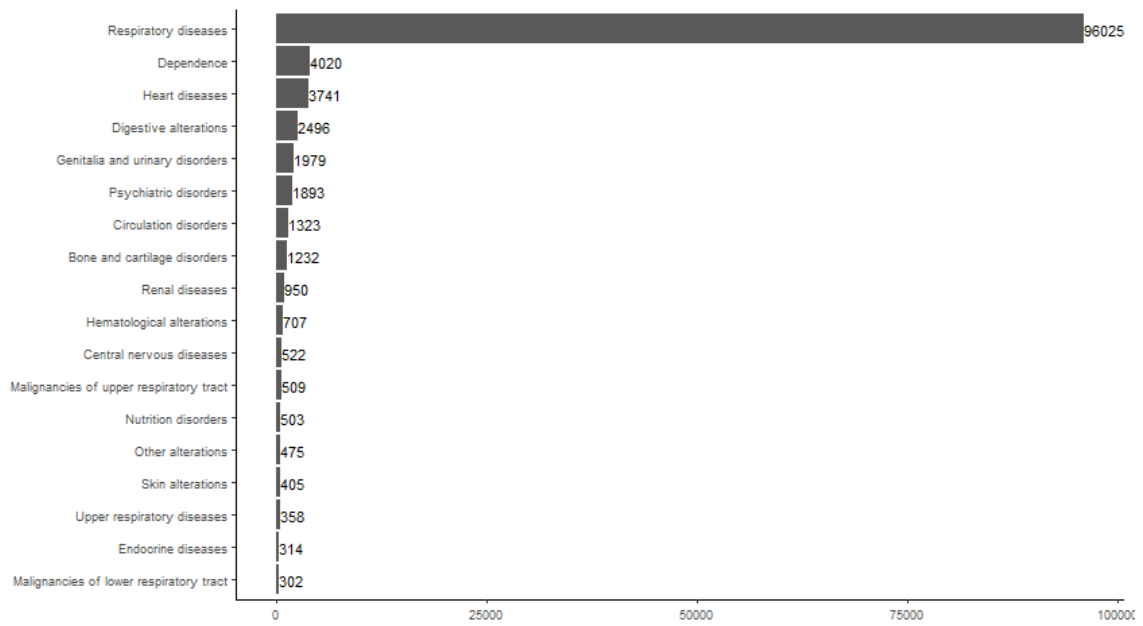


Figure S1. Number of simultaneous diagnoses with COPD (x-axis) (i.e., for the first time in the same visit) by disease group (y-axis).

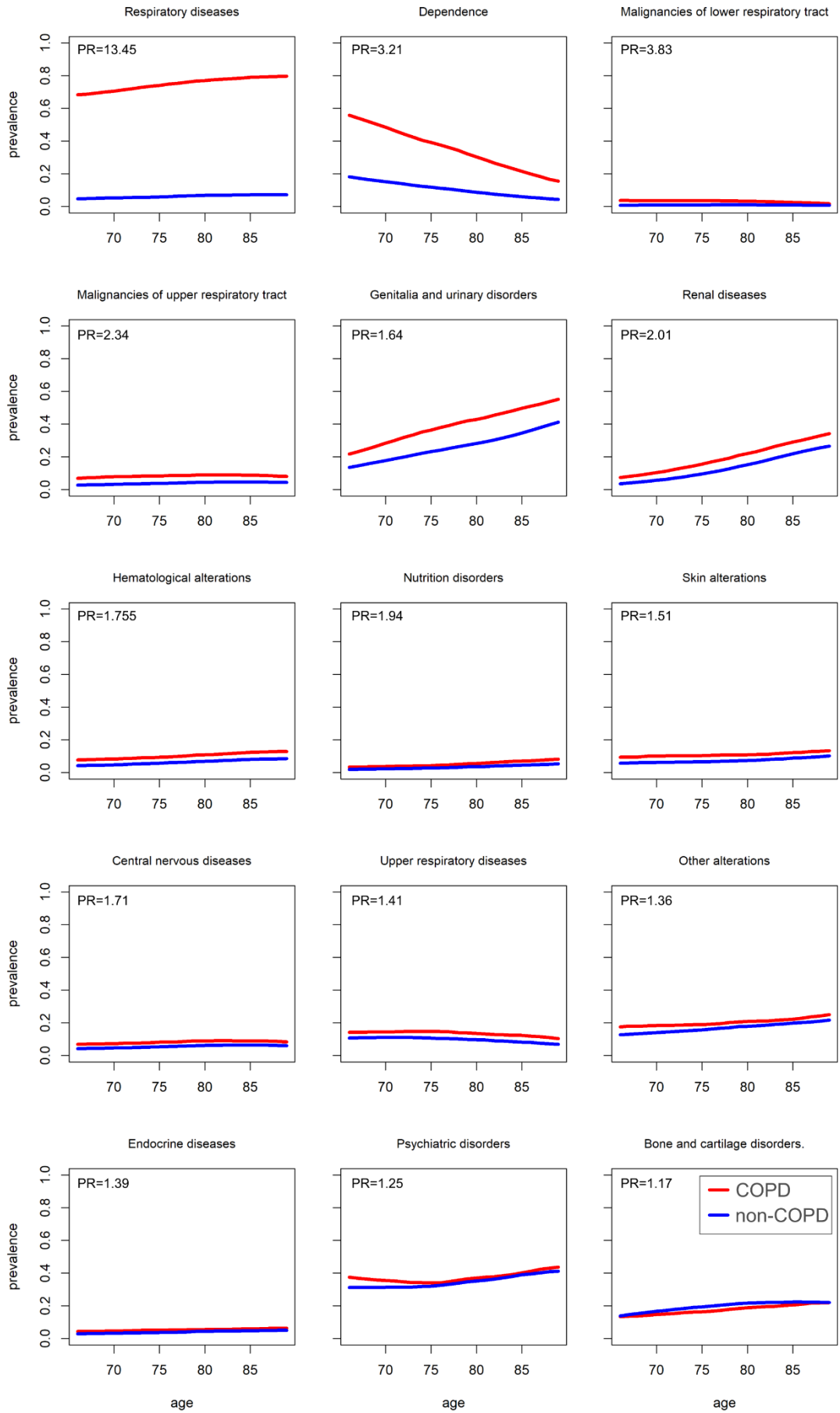


Figure S2. Comparison of the age-associated prevalence of the disease groups (DG) in COPD (red) and non-COPD patients (blue) in the CHSS. The order of the figures follows the combined rank of co-occurrence reported in Table S3 in the online supplementary file 2). Prevalence ratios (PR) comparing the mean prevalence of COPD with non-COPD between 65-90 ages are reported for each figure.

Supplementary tables

Table S1. ICD9 codes considered for the diagnosis of COPD.

Code	Name
491.2x	Obstructive chronic bronchitis
491.8	Other chronic bronchitis
491.9	Unspecified chronic bronchitis
492.x	Emphysema
493.2x	Chronic obstructive asthma
494.x	Bronchiectasis
496	Chronic airway obstruction, not elsewhere classified

Table S2. ICD9 codes by disease groups and their descriptor.

Group ID	Group	ICD9 code	Name
DG1	Respiratory diseases	135	Sarcoidosis
DG1	Respiratory diseases	4150	Acute cor pulmonale
DG1	Respiratory diseases	41513	Saddle embolus of pulmonary artery
DG1	Respiratory diseases	416	Chronic pulmonary heart disease
DG1	Respiratory diseases	4160	Primary pulmonary hypertension
DG1	Respiratory diseases	4161	Kyphoscoliotic heart disease
DG1	Respiratory diseases	4162	Chronic pulmonary embolism
DG1	Respiratory diseases	4168	Other chronic pulmonary heart diseases
DG1	Respiratory diseases	4169	Chronic pulmonary heart disease, unspecified
DG1	Respiratory diseases	4170	Arteriovenous fistula of pulmonary vessels
DG1	Respiratory diseases	491	Chronic bronchitis
DG1	Respiratory diseases	4910	Simple chronic bronchitis
DG1	Respiratory diseases	4911	Mucopurulent chronic bronchitis
DG1	Respiratory diseases	4912	Obstructive chronic bronchitis
DG1	Respiratory diseases	49120	Obstructive chronic bronchitis without exacerbation
DG1	Respiratory diseases	49121	Obstructive chronic bronchitis with (acute) exacerbation
DG1	Respiratory diseases	49122	Obstructive chronic bronchitis with acute bronchitis
DG1	Respiratory diseases	4918	Other chronic bronchitis
DG1	Respiratory diseases	4919	Unspecified chronic bronchitis
DG1	Respiratory diseases	492	Emphysema
DG1	Respiratory diseases	4920	Emphysematous bleb
DG1	Respiratory diseases	4928	Other emphysema
DG1	Respiratory diseases	493	Asthma
DG1	Respiratory diseases	4930	Extrinsic asthma
DG1	Respiratory diseases	49300	Extrinsic asthma, unspecified
DG1	Respiratory diseases	49301	Extrinsic asthma with status asthmaticus
DG1	Respiratory diseases	49302	Extrinsic asthma with (acute) exacerbation
DG1	Respiratory diseases	4931	Intrinsic asthma
DG1	Respiratory diseases	49310	Intrinsic asthma, unspecified
DG1	Respiratory diseases	49311	Intrinsic asthma with status asthmaticus
DG1	Respiratory diseases	49312	Intrinsic asthma with (acute) exacerbation
DG1	Respiratory diseases	4932	Chronic obstructive asthma
DG1	Respiratory diseases	49320	Chronic obstructive asthma, unspecified
DG1	Respiratory diseases	49321	Chronic obstructive asthma with status asthmaticus
DG1	Respiratory diseases	49322	Chronic obstructive asthma with (acute) exacerbation
DG1	Respiratory diseases	4938	Other forms of asthma
DG1	Respiratory diseases	49381	Exercise induced bronchospasm
DG1	Respiratory diseases	49382	Cough variant asthma
DG1	Respiratory diseases	4939	Asthma, unspecified
DG1	Respiratory diseases	49390	Asthma, unspecified type, unspecified
DG1	Respiratory diseases	49391	Asthma, unspecified type, with status asthmaticus
DG1	Respiratory diseases	49392	Asthma, unspecified type, with (acute) exacerbation

DG1	Respiratory diseases	494	Bronchiectasis
DG1	Respiratory diseases	4940	Bronchiectasis without acute exacerbation
DG1	Respiratory diseases	4941	Bronchiectasis with acute exacerbation
DG1	Respiratory diseases	495	Extrinsic allergic alveolitis
DG1	Respiratory diseases	4950	Farmers' lung
DG1	Respiratory diseases	4951	Bagassosis
DG1	Respiratory diseases	4952	Bird-fanciers' lung
DG1	Respiratory diseases	4953	Suberosis
DG1	Respiratory diseases	4954	Malt workers' lung
DG1	Respiratory diseases	4955	Mushroom workers' lung
DG1	Respiratory diseases	4956	Maple bark-strippers' lung
DG1	Respiratory diseases	4957	Ventilation pneumonitis
DG1	Respiratory diseases	4958	Other specified allergic alveolitis and pneumonitis
DG1	Respiratory diseases	4959	Unspecified allergic alveolitis and pneumonitis
DG1	Respiratory diseases	500	Coal workers' pneumoconiosis
DG1	Respiratory diseases	501	Asbestosis
DG1	Respiratory diseases	502	Pneumoconiosis due to other silica or silicates
DG1	Respiratory diseases	503	Pneumoconiosis due to other inorganic dust
DG1	Respiratory diseases	504	Pneumonopathy due to inhalation of other dust
DG1	Respiratory diseases	505	Pneumoconiosis, unspecified
DG1	Respiratory diseases	5064	Chronic respiratory conditions due to fumes and vapors
DG1	Respiratory diseases	5081	Chronic and other pulmonary manifestations due to radiation
DG1	Respiratory diseases	51181	Malignant pleural effusion
DG1	Respiratory diseases	51284	Other air leak
DG1	Respiratory diseases	514	Pulmonary congestion and hypostasis
DG1	Respiratory diseases	515	Postinflammatory pulmonary fibrosis
DG1	Respiratory diseases	516	Other alveolar and parietoalveolar pneumonopathy
DG1	Respiratory diseases	5160	Pulmonary alveolar proteinosis
DG1	Respiratory diseases	5161	Idiopathic pulmonary hemosiderosis
DG1	Respiratory diseases	5162	Pulmonary alveolar microlithiasis
DG1	Respiratory diseases	5163	Idiopathic interstitial pneumonia
DG1	Respiratory diseases	51630	Idiopathic interstitial pneumonia, not otherwise specified
DG1	Respiratory diseases	51631	Idiopathic pulmonary fibrosis
DG1	Respiratory diseases	51632	Idiopathic non-specific interstitial pneumonitis
DG1	Respiratory diseases	51633	Acute interstitial pneumonitis
DG1	Respiratory diseases	51634	Respiratory bronchiolitis interstitial lung disease
DG1	Respiratory diseases	51635	Idiopathic lymphoid interstitial pneumonia
DG1	Respiratory diseases	51636	Cryptogenic organizing pneumonia
DG1	Respiratory diseases	51637	Desquamative interstitial pneumonia
DG1	Respiratory diseases	5164	Lymphangiomyomatosis
DG1	Respiratory diseases	5165	Adult pulmonary Langerhans cell histiocytosis
DG1	Respiratory diseases	5166	Interstitial lung diseases of childhood
DG1	Respiratory diseases	51661	Neuroendocrine cell hyperplasia of infancy
DG1	Respiratory diseases	51662	Pulmonary interstitial glycogenosis
DG1	Respiratory diseases	51663	Surfactant mutations of the lung

DG1	Respiratory diseases	51664	Alveolar capillary dysplasia with vein misalignment
DG1	Respiratory diseases	51669	Other interstitial lung diseases of childhood
DG1	Respiratory diseases	5168	Other specified alveolar and parietoalveolar pneumonopathies
DG1	Respiratory diseases	5169	Unspecified alveolar and parietoalveolar pneumonopathy
DG1	Respiratory diseases	5171	Rheumatic pneumonia
DG1	Respiratory diseases	5172	Lung involvement in systemic sclerosis
DG1	Respiratory diseases	5178	Lung involvement in other diseases classified elsewhere
DG1	Respiratory diseases	51853	Acute and chronic respiratory failure following trauma and surgery
DG1	Respiratory diseases	5186	Allergic bronchopulmonary aspergillosis
DG1	Respiratory diseases	51883	Chronic respiratory failure
DG1	Respiratory diseases	51884	Acute and chronic respiratory failure
DG2	Heart diseases	393	Chronic rheumatic pericarditis
DG2	Heart diseases	394	Diseases of mitral valve
DG2	Heart diseases	3940	Mitral stenosis
DG2	Heart diseases	3941	Rheumatic mitral insufficiency
DG2	Heart diseases	3942	Mitral stenosis with insufficiency
DG2	Heart diseases	3949	Other and unspecified mitral valve diseases
DG2	Heart diseases	396	Diseases of mitral and aortic valves
DG2	Heart diseases	3960	Mitral valve stenosis and aortic valve stenosis
DG2	Heart diseases	3961	Mitral valve stenosis and aortic valve insufficiency
DG2	Heart diseases	3962	Mitral valve insufficiency and aortic valve stenosis
DG2	Heart diseases	3963	Mitral valve insufficiency and aortic valve insufficiency
DG2	Heart diseases	3968	Multiple involvement of mitral and aortic valves
DG2	Heart diseases	3969	Mitral and aortic valve diseases, unspecified
DG2	Heart diseases	397	Diseases of other endocardial structures
DG2	Heart diseases	3970	Diseases of tricuspid valve
DG2	Heart diseases	3971	Rheumatic diseases of pulmonary valve
DG2	Heart diseases	3979	Rheumatic diseases of endocardium, valve unspecified
DG2	Heart diseases	402	Hypertensive heart disease
DG2	Heart diseases	4020	Malignant
DG2	Heart diseases	40200	Malignant hypertensive heart disease without heart failure
DG2	Heart diseases	40201	Malignant hypertensive heart disease with heart failure
DG2	Heart diseases	4021	Benign
DG2	Heart diseases	40210	Benign hypertensive heart disease without heart failure
DG2	Heart diseases	40211	Benign hypertensive heart disease with heart failure
DG2	Heart diseases	4029	Unspecified
DG2	Heart diseases	40290	Unspecified hypertensive heart disease without heart failure
DG2	Heart diseases	40291	Unspecified hypertensive heart disease with heart failure
DG2	Heart diseases	404	Hypertensive heart and chronic kidney disease
DG2	Heart diseases	4040	Malignant
DG2	Heart diseases	40400	Hypertensive heart and chronic kidney disease, malignant, without heart failure and with chronic kidney disease stage I through stage IV, or unspecified

DG2	Heart diseases	40401	Hypertensive heart and chronic kidney disease, malignant, with heart failure and with chronic kidney disease stage I through stage IV, or unspecified
DG2	Heart diseases	40402	Hypertensive heart and chronic kidney disease, malignant, without heart failure and with chronic kidney disease stage V or end stage renal disease
DG2	Heart diseases	40403	Hypertensive heart and chronic kidney disease, malignant, with heart failure and with chronic kidney disease stage V or end stage renal disease
DG2	Heart diseases	4041	Benign
DG2	Heart diseases	40410	Hypertensive heart and chronic kidney disease, benign, without heart failure and with chronic kidney disease stage I through stage IV, or unspecified
DG2	Heart diseases	40411	Hypertensive heart and chronic kidney disease, benign, with heart failure and with chronic kidney disease stage I through stage IV, or unspecified
DG2	Heart diseases	40412	Hypertensive heart and chronic kidney disease, benign, without heart failure and with chronic kidney disease stage V or end stage renal disease
DG2	Heart diseases	40413	Hypertensive heart and chronic kidney disease, benign, with heart failure and chronic kidney disease stage V or end stage renal disease
DG2	Heart diseases	4049	Unspecified
DG2	Heart diseases	40490	Hypertensive heart and chronic kidney disease, unspecified, without heart failure and with chronic kidney disease stage I through stage IV, or unspecified
DG2	Heart diseases	40491	Hypertensive heart and chronic kidney disease, unspecified, with heart failure and with chronic kidney disease stage I through stage IV, or unspecified
DG2	Heart diseases	40492	Hypertensive heart and chronic kidney disease, unspecified, without heart failure and with chronic kidney disease stage V or end stage renal disease
DG2	Heart diseases	40493	Hypertensive heart and chronic kidney disease, unspecified, with heart failure and chronic kidney disease stage V or end stage renal disease
DG2	Heart diseases	405	Secondary hypertension
DG2	Heart diseases	4050	Malignant
DG2	Heart diseases	40501	Malignant renovascular hypertension
DG2	Heart diseases	40509	Other malignant secondary hypertension
DG2	Heart diseases	4051	Benign
DG2	Heart diseases	40511	Benign renovascular hypertension
DG2	Heart diseases	40519	Other benign secondary hypertension
DG2	Heart diseases	4059	Unspecified
DG2	Heart diseases	40591	Unspecified renovascular hypertension
DG2	Heart diseases	40599	Other unspecified secondary hypertension
DG2	Heart diseases	410	Acute myocardial infarction
DG2	Heart diseases	4100	Of anterolateral wall
DG2	Heart diseases	41000	Acute myocardial infarction of anterolateral wall, episode of care unspecified

DG2	Heart diseases	41001	Acute myocardial infarction of anterolateral wall, initial episode of care
DG2	Heart diseases	41002	Acute myocardial infarction of anterolateral wall, subsequent episode of care
DG2	Heart diseases	4101	Of other anterior wall
DG2	Heart diseases	41010	Acute myocardial infarction of other anterior wall, episode of care unspecified
DG2	Heart diseases	41011	Acute myocardial infarction of other anterior wall, initial episode of care
DG2	Heart diseases	41012	Acute myocardial infarction of other anterior wall, subsequent episode of care
DG2	Heart diseases	4102	Of inferolateral wall
DG2	Heart diseases	41020	Acute myocardial infarction of inferolateral wall, episode of care unspecified
DG2	Heart diseases	41021	Acute myocardial infarction of inferolateral wall, initial episode of care
DG2	Heart diseases	41022	Acute myocardial infarction of inferolateral wall, subsequent episode of care
DG2	Heart diseases	4103	Of inferoposterior wall
DG2	Heart diseases	41030	Acute myocardial infarction of inferoposterior wall, episode of care unspecified
DG2	Heart diseases	41031	Acute myocardial infarction of inferoposterior wall, initial episode of care
DG2	Heart diseases	41032	Acute myocardial infarction of inferoposterior wall, subsequent episode of care
DG2	Heart diseases	4104	Of other inferior wall
DG2	Heart diseases	41040	Acute myocardial infarction of other inferior wall, episode of care unspecified
DG2	Heart diseases	41041	Acute myocardial infarction of other inferior wall, initial episode of care
DG2	Heart diseases	41042	Acute myocardial infarction of other inferior wall, subsequent episode of care
DG2	Heart diseases	4105	Of other lateral wall
DG2	Heart diseases	41050	Acute myocardial infarction of other lateral wall, episode of care unspecified
DG2	Heart diseases	41051	Acute myocardial infarction of other lateral wall, initial episode of care
DG2	Heart diseases	41052	Acute myocardial infarction of other lateral wall, subsequent episode of care
DG2	Heart diseases	4106	True posterior wall infarction
DG2	Heart diseases	41060	True posterior wall infarction, episode of care unspecified
DG2	Heart diseases	41061	True posterior wall infarction, initial episode of care
DG2	Heart diseases	41062	True posterior wall infarction, subsequent episode of care
DG2	Heart diseases	4107	Subendocardial infarction
DG2	Heart diseases	41070	Subendocardial infarction, episode of care unspecified
DG2	Heart diseases	41071	Subendocardial infarction, initial episode of care
DG2	Heart diseases	41072	Subendocardial infarction, subsequent episode of care
DG2	Heart diseases	4108	Of other specified sites

DG2	Heart diseases	41080	Acute myocardial infarction of other specified sites, episode of care unspecified
DG2	Heart diseases	41081	Acute myocardial infarction of other specified sites, initial episode of care
DG2	Heart diseases	41082	Acute myocardial infarction of other specified sites, subsequent episode of care
DG2	Heart diseases	4109	Unspecified site
DG2	Heart diseases	41090	Acute myocardial infarction of unspecified site, episode of care unspecified
DG2	Heart diseases	41091	Acute myocardial infarction of unspecified site, initial episode of care
DG2	Heart diseases	41092	Acute myocardial infarction of unspecified site, subsequent episode of care
DG2	Heart diseases	411	Other acute and subacute forms of ischemic heart disease
DG2	Heart diseases	4110	Postmyocardial infarction syndrome
DG2	Heart diseases	4111	Intermediate coronary syndrome
DG2	Heart diseases	4118	Other
DG2	Heart diseases	41181	Acute coronary occlusion without myocardial infarction
DG2	Heart diseases	41189	Other acute and subacute forms of ischemic heart disease, other
DG2	Heart diseases	412	Old myocardial infarction
DG2	Heart diseases	413	Angina pectoris
DG2	Heart diseases	4130	Angina decubitus
DG2	Heart diseases	4131	Prinzmetal angina
DG2	Heart diseases	4139	Other and unspecified angina pectoris
DG2	Heart diseases	414	Other forms of chronic ischemic heart disease
DG2	Heart diseases	4140	Coronary atherosclerosis
DG2	Heart diseases	41400	Coronary atherosclerosis of unspecified type of vessel, native or graft
DG2	Heart diseases	41401	Coronary atherosclerosis of native coronary artery
DG2	Heart diseases	41402	Coronary atherosclerosis of autologous vein bypass graft
DG2	Heart diseases	41403	Coronary atherosclerosis of nonautologous biological bypass graft
DG2	Heart diseases	41404	Coronary atherosclerosis of artery bypass graft
DG2	Heart diseases	41405	Coronary atherosclerosis of unspecified bypass graft
DG2	Heart diseases	41406	Coronary atherosclerosis of native coronary artery of transplanted heart
DG2	Heart diseases	41407	Coronary atherosclerosis of bypass graft (artery) (vein) of transplanted heart
DG2	Heart diseases	4141	Aneurysm and dissection of heart
DG2	Heart diseases	41410	Aneurysm of heart (wall)
DG2	Heart diseases	41411	Aneurysm of coronary vessels
DG2	Heart diseases	41412	Dissection of coronary artery
DG2	Heart diseases	41419	Other aneurysm of heart
DG2	Heart diseases	4142	Chronic total occlusion of coronary artery
DG2	Heart diseases	4143	Coronary atherosclerosis due to lipid rich plaque
DG2	Heart diseases	4144	Coronary atherosclerosis due to calcified coronary lesion
DG2	Heart diseases	4148	Other specified forms of chronic ischemic heart disease

DG2	Heart diseases	4149	Chronic ischemic heart disease, unspecified
DG2	Heart diseases	4231	Adhesive pericarditis
DG2	Heart diseases	4232	Constrictive pericarditis
DG2	Heart diseases	424	Other diseases of endocardium
DG2	Heart diseases	4240	Mitral valve disorders
DG2	Heart diseases	4241	Aortic valve disorders
DG2	Heart diseases	4242	Tricuspid valve disorders, specified as nonrheumatic
DG2	Heart diseases	4243	Pulmonary valve disorders
DG2	Heart diseases	4249	Endocarditis, valve unspecified
DG2	Heart diseases	42490	Endocarditis, valve unspecified, unspecified cause
DG2	Heart diseases	42491	Endocarditis in diseases classified elsewhere
DG2	Heart diseases	42499	Other endocarditis, valve unspecified
DG2	Heart diseases	425	Cardiomyopathy
DG2	Heart diseases	4250	Endomyocardial fibrosis
DG2	Heart diseases	4251	Hypertrophic cardiomyopathy
DG2	Heart diseases	42511	Hypertrophic obstructive cardiomyopathy
DG2	Heart diseases	42518	Other hypertrophic cardiomyopathy
DG2	Heart diseases	4252	Obscure cardiomyopathy of Africa
DG2	Heart diseases	4253	Endocardial fibroelastosis
DG2	Heart diseases	4254	Other primary cardiomyopathies
DG2	Heart diseases	4255	Alcoholic cardiomyopathy
DG2	Heart diseases	4257	Nutritional and metabolic cardiomyopathy
DG2	Heart diseases	4258	Cardiomyopathy in other diseases classified elsewhere
DG2	Heart diseases	4259	Secondary cardiomyopathy, unspecified
DG2	Heart diseases	426	Conduction disorders
DG2	Heart diseases	4260	Atrioventricular block, complete
DG2	Heart diseases	4261	Atrioventricular block, other and unspecified
DG2	Heart diseases	42610	Atrioventricular block, unspecified
DG2	Heart diseases	42611	First degree atrioventricular block
DG2	Heart diseases	42612	Mobitz (type) II atrioventricular block
DG2	Heart diseases	42613	Other second degree atrioventricular block
DG2	Heart diseases	4262	Left bundle branch hemiblock
DG2	Heart diseases	4263	Other left bundle branch block
DG2	Heart diseases	4264	Right bundle branch block
DG2	Heart diseases	4265	Bundle branch block, other and unspecified
DG2	Heart diseases	42650	Bundle branch block, unspecified
DG2	Heart diseases	42651	Right bundle branch block and left posterior fascicular block
DG2	Heart diseases	42652	Right bundle branch block and left anterior fascicular block
DG2	Heart diseases	42653	Other bilateral bundle branch block
DG2	Heart diseases	42654	Trifascicular block
DG2	Heart diseases	4266	Other heart block
DG2	Heart diseases	4267	Anomalous atrioventricular excitation
DG2	Heart diseases	4268	Other specified conduction disorders
DG2	Heart diseases	42681	Lown-Ganong-Levine syndrome
DG2	Heart diseases	42682	Long QT syndrome
DG2	Heart diseases	42689	Other specified conduction disorders

DG2	Heart diseases	4269	Conduction disorder, unspecified
DG2	Heart diseases	427	Cardiac dysrhythmias
DG2	Heart diseases	4270	Paroxysmal supraventricular tachycardia
DG2	Heart diseases	4271	Paroxysmal ventricular tachycardia
DG2	Heart diseases	4272	Paroxysmal tachycardia, unspecified
DG2	Heart diseases	4273	Atrial fibrillation and flutter
DG2	Heart diseases	42731	Atrial fibrillation
DG2	Heart diseases	42732	Atrial flutter
DG2	Heart diseases	4274	Ventricular fibrillation and flutter
DG2	Heart diseases	42741	Ventricular fibrillation
DG2	Heart diseases	42742	Ventricular flutter
DG2	Heart diseases	4275	Cardiac arrest
DG2	Heart diseases	4276	Premature beats
DG2	Heart diseases	42760	Premature beats, unspecified
DG2	Heart diseases	42761	Supraventricular premature beats
DG2	Heart diseases	42769	Other premature beats
DG2	Heart diseases	4278	Other specified cardiac dysrhythmias
DG2	Heart diseases	42781	Sinoatrial node dysfunction
DG2	Heart diseases	42789	Other specified cardiac dysrhythmias
DG2	Heart diseases	4279	Cardiac dysrhythmia, unspecified
DG2	Heart diseases	428	Heart failure
DG2	Heart diseases	4280	Congestive heart failure, unspecified
DG2	Heart diseases	4281	Left heart failure
DG2	Heart diseases	4282	Systolic heart failure
DG2	Heart diseases	42820	Systolic heart failure, unspecified
DG2	Heart diseases	42821	Acute systolic heart failure
DG2	Heart diseases	42822	Chronic systolic heart failure
DG2	Heart diseases	42823	Acute on chronic systolic heart failure
DG2	Heart diseases	4283	Diastolic heart failure
DG2	Heart diseases	42830	Diastolic heart failure, unspecified
DG2	Heart diseases	42831	Acute diastolic heart failure
DG2	Heart diseases	42832	Chronic diastolic heart failure
DG2	Heart diseases	42833	Acute on chronic diastolic heart failure
DG2	Heart diseases	4284	Combined systolic and diastolic heart failure
DG2	Heart diseases	42840	Combined systolic and diastolic heart failure, unspecified
DG2	Heart diseases	42841	Acute combined systolic and diastolic heart failure
DG2	Heart diseases	42842	Chronic combined systolic and diastolic heart failure
DG2	Heart diseases	42843	Acute on chronic combined systolic and diastolic heart failure
DG2	Heart diseases	4289	Heart failure, unspecified
DG2	Heart diseases	429	Ill-defined descriptions and complications of heart disease
DG2	Heart diseases	4290	Myocarditis, unspecified
DG2	Heart diseases	4291	Myocardial degeneration
DG2	Heart diseases	4292	Cardiovascular disease, unspecified
DG2	Heart diseases	4293	Cardiomegaly
DG2	Heart diseases	4294	Functional disturbances following cardiac surgery

DG2	Heart diseases	4295	Rupture of chordae tendineae
DG2	Heart diseases	4296	Rupture of papillary muscle
DG2	Heart diseases	4297	Certain sequelae of myocardial infarction, not elsewhere classified
DG2	Heart diseases	42971	Acquired cardiac septal defect
DG2	Heart diseases	42979	Certain sequelae of myocardial infarction, not elsewhere classified, other
DG2	Heart diseases	4298	Other ill-defined heart diseases
DG2	Heart diseases	42981	Other disorders of papillary muscle
DG2	Heart diseases	42982	Hyperkinetic heart disease
DG2	Heart diseases	42983	Takotsubo syndrome
DG2	Heart diseases	42989	Other ill-defined heart diseases
DG2	Heart diseases	4299	Heart disease, unspecified
DG2	Heart diseases	440	Atherosclerosis
DG2	Heart diseases	4400	Atherosclerosis of aorta
DG2	Heart diseases	4401	Atherosclerosis of renal artery
DG2	Heart diseases	4402	Of native arteries of the extremities
DG2	Heart diseases	44020	Atherosclerosis of native arteries of the extremities, unspecified
DG2	Heart diseases	44021	Atherosclerosis of native arteries of the extremities with intermittent claudication
DG2	Heart diseases	44022	Atherosclerosis of native arteries of the extremities with rest pain
DG2	Heart diseases	44023	Atherosclerosis of native arteries of the extremities with ulceration
DG2	Heart diseases	44024	Atherosclerosis of native arteries of the extremities with gangrene
DG2	Heart diseases	44029	Other atherosclerosis of native arteries of the extremities
DG2	Heart diseases	4403	Of bypass graft of the extremities
DG2	Heart diseases	44030	Atherosclerosis of unspecified bypass graft of the extremities
DG2	Heart diseases	44031	Atherosclerosis of autologous vein bypass graft of the extremities
DG2	Heart diseases	44032	Atherosclerosis of nonautologous biological bypass graft of the extremities
DG2	Heart diseases	4404	Chronic total occlusion of artery of the extremities
DG2	Heart diseases	4408	Atherosclerosis of other specified arteries
DG2	Heart diseases	4409	Generalized and unspecified atherosclerosis
DG4	Malignancies of upper respiratory tract	140	Malignant neoplasm of lip
DG4	Malignancies of upper respiratory tract	1400	Malignant neoplasm of upper lip, vermilion border
DG4	Malignancies of upper respiratory tract	1401	Malignant neoplasm of lower lip, vermilion border
DG4	Malignancies of upper respiratory tract	1403	Malignant neoplasm of upper lip, inner aspect
DG4	Malignancies of upper respiratory tract	1404	Malignant neoplasm of lower lip, inner aspect

DG4	Malignancies of upper respiratory tract	1405	Malignant neoplasm of lip, unspecified, inner aspect
DG4	Malignancies of upper respiratory tract	1406	Malignant neoplasm of commissure of lip
DG4	Malignancies of upper respiratory tract	1408	Malignant neoplasm of other sites of lip
DG4	Malignancies of upper respiratory tract	1409	Malignant neoplasm of lip, unspecified, vermilion border
DG4	Malignancies of upper respiratory tract	141	Malignant neoplasm of tongue
DG4	Malignancies of upper respiratory tract	1410	Malignant neoplasm of base of tongue
DG4	Malignancies of upper respiratory tract	1411	Malignant neoplasm of dorsal surface of tongue
DG4	Malignancies of upper respiratory tract	1412	Malignant neoplasm of tip and lateral border of tongue
DG4	Malignancies of upper respiratory tract	1413	Malignant neoplasm of ventral surface of tongue
DG4	Malignancies of upper respiratory tract	1414	Malignant neoplasm of anterior two-thirds of tongue, part unspecified
DG4	Malignancies of upper respiratory tract	1415	Malignant neoplasm of junctional zone of tongue
DG4	Malignancies of upper respiratory tract	1416	Malignant neoplasm of lingual tonsil
DG4	Malignancies of upper respiratory tract	1418	Malignant neoplasm of other sites of tongue
DG4	Malignancies of upper respiratory tract	1419	Malignant neoplasm of tongue, unspecified
DG4	Malignancies of upper respiratory tract	144	Malignant neoplasm of floor of mouth
DG4	Malignancies of upper respiratory tract	1440	Malignant neoplasm of anterior portion of floor of mouth
DG4	Malignancies of upper respiratory tract	1441	Malignant neoplasm of lateral portion of floor of mouth
DG4	Malignancies of upper respiratory tract	1448	Malignant neoplasm of other sites of floor of mouth
DG4	Malignancies of upper respiratory tract	1449	Malignant neoplasm of floor of mouth, part unspecified
DG4	Malignancies of upper respiratory tract	145	Malignant neoplasm of other and unspecified parts of mouth
DG4	Malignancies of upper respiratory tract	1450	Malignant neoplasm of cheek mucosa
DG4	Malignancies of upper respiratory tract	1451	Malignant neoplasm of vestibule of mouth
DG4	Malignancies of upper respiratory tract	1452	Malignant neoplasm of hard palate
DG4	Malignancies of upper respiratory tract	1453	Malignant neoplasm of soft palate
DG4	Malignancies of upper respiratory tract	1454	Malignant neoplasm of uvula

DG4	Malignancies of upper respiratory tract	1455	Malignant neoplasm of palate, unspecified
DG4	Malignancies of upper respiratory tract	1456	Malignant neoplasm of retromolar area
DG4	Malignancies of upper respiratory tract	1458	Malignant neoplasm of other specified parts of mouth
DG4	Malignancies of upper respiratory tract	1459	Malignant neoplasm of mouth, unspecified
DG4	Malignancies of upper respiratory tract	146	Malignant neoplasm of oropharynx
DG4	Malignancies of upper respiratory tract	1460	Malignant neoplasm of tonsil
DG4	Malignancies of upper respiratory tract	1461	Malignant neoplasm of tonsillar fossa
DG4	Malignancies of upper respiratory tract	1462	Malignant neoplasm of tonsillar pillars (anterior) (posterior)
DG4	Malignancies of upper respiratory tract	1463	Malignant neoplasm of vallecula epiglottica
DG4	Malignancies of upper respiratory tract	1464	Malignant neoplasm of anterior aspect of epiglottis
DG4	Malignancies of upper respiratory tract	1465	Malignant neoplasm of junctional region of oropharynx
DG4	Malignancies of upper respiratory tract	1466	Malignant neoplasm of lateral wall of oropharynx
DG4	Malignancies of upper respiratory tract	1467	Malignant neoplasm of posterior wall of oropharynx
DG4	Malignancies of upper respiratory tract	1468	Malignant neoplasm of other specified sites of oropharynx
DG4	Malignancies of upper respiratory tract	1469	Malignant neoplasm of oropharynx, unspecified site
DG4	Malignancies of upper respiratory tract	147	Malignant neoplasm of nasopharynx
DG4	Malignancies of upper respiratory tract	1470	Malignant neoplasm of superior wall of nasopharynx
DG4	Malignancies of upper respiratory tract	1471	Malignant neoplasm of posterior wall of nasopharynx
DG4	Malignancies of upper respiratory tract	1472	Malignant neoplasm of lateral wall of nasopharynx
DG4	Malignancies of upper respiratory tract	1473	Malignant neoplasm of anterior wall of nasopharynx
DG4	Malignancies of upper respiratory tract	1478	Malignant neoplasm of other specified sites of nasopharynx
DG4	Malignancies of upper respiratory tract	1479	Malignant neoplasm of nasopharynx, unspecified site
DG4	Malignancies of upper respiratory tract	148	Malignant neoplasm of hypopharynx
DG4	Malignancies of upper respiratory tract	1480	Malignant neoplasm of postcricoid region of hypopharynx
DG4	Malignancies of upper respiratory tract	1481	Malignant neoplasm of pyriform sinus

DG4	Malignancies of upper respiratory tract	1482	Malignant neoplasm of aryepiglottic fold, hypopharyngeal aspect
DG4	Malignancies of upper respiratory tract	1483	Malignant neoplasm of posterior hypopharyngeal wall
DG4	Malignancies of upper respiratory tract	1488	Malignant neoplasm of other specified sites of hypopharynx
DG4	Malignancies of upper respiratory tract	1489	Malignant neoplasm of hypopharynx, unspecified site
DG4	Malignancies of upper respiratory tract	149	Malignant neoplasm of other and ill-defined sites within the lip, oral cavity, and pharynx
DG4	Malignancies of upper respiratory tract	1490	Malignant neoplasm of pharynx, unspecified
DG4	Malignancies of upper respiratory tract	1491	Malignant neoplasm of waldeyer's ring
DG4	Malignancies of upper respiratory tract	1498	Malignant neoplasm of other sites within the lip and oral cavity
DG4	Malignancies of upper respiratory tract	1499	Malignant neoplasm of ill-defined sites within the lip and oral cavity
DG4	Malignancies of upper respiratory tract	150	Malignant neoplasm of esophagus
DG4	Malignancies of upper respiratory tract	1500	Malignant neoplasm of cervical esophagus
DG4	Malignancies of upper respiratory tract	1501	Malignant neoplasm of thoracic esophagus
DG4	Malignancies of upper respiratory tract	1502	Malignant neoplasm of abdominal esophagus
DG4	Malignancies of upper respiratory tract	1503	Malignant neoplasm of upper third of esophagus
DG4	Malignancies of upper respiratory tract	1504	Malignant neoplasm of middle third of esophagus
DG4	Malignancies of upper respiratory tract	1505	Malignant neoplasm of lower third of esophagus
DG4	Malignancies of upper respiratory tract	1508	Malignant neoplasm of other specified part of esophagus
DG4	Malignancies of upper respiratory tract	1509	Malignant neoplasm of esophagus, unspecified site
DG4	Malignancies of upper respiratory tract	151	Malignant neoplasm of stomach
DG4	Malignancies of upper respiratory tract	1510	Malignant neoplasm of cardia
DG4	Malignancies of upper respiratory tract	1511	Malignant neoplasm of pylorus
DG4	Malignancies of upper respiratory tract	1512	Malignant neoplasm of pyloric antrum
DG4	Malignancies of upper respiratory tract	1513	Malignant neoplasm of fundus of stomach
DG4	Malignancies of upper respiratory tract	1514	Malignant neoplasm of body of stomach
DG4	Malignancies of upper respiratory tract	1515	Malignant neoplasm of lesser curvature of stomach, unspecified

DG4	Malignancies of upper respiratory tract	1516	Malignant neoplasm of greater curvature of stomach, unspecified
DG4	Malignancies of upper respiratory tract	1518	Malignant neoplasm of other specified sites of stomach
DG4	Malignancies of upper respiratory tract	1519	Malignant neoplasm of stomach, unspecified site
DG4	Malignancies of upper respiratory tract	159	Malignant neoplasm of other and ill-defined sites within the digestive organs and peritoneum
DG4	Malignancies of upper respiratory tract	1590	Malignant neoplasm of intestinal tract, part unspecified
DG4	Malignancies of upper respiratory tract	1591	Malignant neoplasm of spleen, not elsewhere classified
DG4	Malignancies of upper respiratory tract	1598	Malignant neoplasm of other sites of digestive system and intra-abdominal organs
DG4	Malignancies of upper respiratory tract	1599	Malignant neoplasm of ill-defined sites within the digestive organs and peritoneum
DG4	Malignancies of upper respiratory tract	161	Malignant neoplasm of larynx
DG4	Malignancies of upper respiratory tract	1610	Malignant neoplasm of glottis
DG4	Malignancies of upper respiratory tract	1611	Malignant neoplasm of supraglottis
DG4	Malignancies of upper respiratory tract	1612	Malignant neoplasm of subglottis
DG4	Malignancies of upper respiratory tract	1613	Malignant neoplasm of laryngeal cartilages
DG4	Malignancies of upper respiratory tract	1618	Malignant neoplasm of other specified sites of larynx
DG4	Malignancies of upper respiratory tract	1619	Malignant neoplasm of larynx, unspecified
DG4	Malignancies of upper respiratory tract	164	Malignant neoplasm of thymus, heart, and mediastinum
DG4	Malignancies of upper respiratory tract	1640	Malignant neoplasm of thymus
DG4	Malignancies of upper respiratory tract	1641	Malignant neoplasm of heart
DG4	Malignancies of upper respiratory tract	1642	Malignant neoplasm of anterior mediastinum
DG4	Malignancies of upper respiratory tract	1643	Malignant neoplasm of posterior mediastinum
DG4	Malignancies of upper respiratory tract	1648	Malignant neoplasm of other parts of mediastinum
DG4	Malignancies of upper respiratory tract	1649	Malignant neoplasm of mediastinum, part unspecified
DG4	Malignancies of upper respiratory tract	170	Malignant neoplasm of bone and articular cartilage
DG4	Malignancies of upper respiratory tract	1700	Malignant neoplasm of bones of skull and face, except mandible
DG4	Malignancies of upper respiratory tract	1701	Malignant neoplasm of mandible

DG4	Malignancies of upper respiratory tract	1702	Malignant neoplasm of vertebral column, excluding sacrum and coccyx
DG4	Malignancies of upper respiratory tract	1703	Malignant neoplasm of ribs, sternum, and clavicle
DG4	Malignancies of upper respiratory tract	1704	Malignant neoplasm of scapula and long bones of upper limb
DG4	Malignancies of upper respiratory tract	1705	Malignant neoplasm of short bones of upper limb
DG4	Malignancies of upper respiratory tract	1706	Malignant neoplasm of pelvic bones, sacrum, and coccyx
DG4	Malignancies of upper respiratory tract	1707	Malignant neoplasm of long bones of lower limb
DG4	Malignancies of upper respiratory tract	1708	Malignant neoplasm of short bones of lower limb
DG4	Malignancies of upper respiratory tract	1709	Malignant neoplasm of bone and articular cartilage, site unspecified
DG4	Malignancies of upper respiratory tract	176	Kaposi's sarcoma
DG4	Malignancies of upper respiratory tract	1760	Kaposi's sarcoma, skin
DG4	Malignancies of upper respiratory tract	1761	Kaposi's sarcoma, soft tissue
DG4	Malignancies of upper respiratory tract	1762	Kaposi's sarcoma, palate
DG4	Malignancies of upper respiratory tract	1763	Kaposi's sarcoma, gastrointestinal sites
DG4	Malignancies of upper respiratory tract	1764	Kaposi's sarcoma, lung
DG4	Malignancies of upper respiratory tract	1765	Kaposi's sarcoma, lymph nodes
DG4	Malignancies of upper respiratory tract	1768	Kaposi's sarcoma, other specified sites
DG4	Malignancies of upper respiratory tract	1769	Kaposi's sarcoma, unspecified site
DG4	Malignancies of upper respiratory tract	186	Malignant neoplasm of testis
DG4	Malignancies of upper respiratory tract	1860	Malignant neoplasm of undescended testis
DG4	Malignancies of upper respiratory tract	1869	Malignant neoplasm of other and unspecified testis
DG4	Malignancies of upper respiratory tract	187	Malignant neoplasm of penis and other male genital organs
DG4	Malignancies of upper respiratory tract	1871	Malignant neoplasm of prepuce
DG4	Malignancies of upper respiratory tract	1872	Malignant neoplasm of glans penis
DG4	Malignancies of upper respiratory tract	1873	Malignant neoplasm of body of penis
DG4	Malignancies of upper respiratory tract	1874	Malignant neoplasm of penis, part unspecified

DG4	Malignancies of upper respiratory tract	1875	Malignant neoplasm of epididymis
DG4	Malignancies of upper respiratory tract	1876	Malignant neoplasm of spermatic cord
DG4	Malignancies of upper respiratory tract	1877	Malignant neoplasm of scrotum
DG4	Malignancies of upper respiratory tract	1878	Malignant neoplasm of other specified sites of male genital organs
DG4	Malignancies of upper respiratory tract	1879	Malignant neoplasm of male genital organ, site unspecified
DG4	Malignancies of upper respiratory tract	188	Malignant neoplasm of bladder
DG4	Malignancies of upper respiratory tract	1880	Malignant neoplasm of trigone of urinary bladder
DG4	Malignancies of upper respiratory tract	1881	Malignant neoplasm of dome of urinary bladder
DG4	Malignancies of upper respiratory tract	1882	Malignant neoplasm of lateral wall of urinary bladder
DG4	Malignancies of upper respiratory tract	1883	Malignant neoplasm of anterior wall of urinary bladder
DG4	Malignancies of upper respiratory tract	1884	Malignant neoplasm of posterior wall of urinary bladder
DG4	Malignancies of upper respiratory tract	1885	Malignant neoplasm of bladder neck
DG4	Malignancies of upper respiratory tract	1886	Malignant neoplasm of ureteric orifice
DG4	Malignancies of upper respiratory tract	1887	Malignant neoplasm of urachus
DG4	Malignancies of upper respiratory tract	1888	Malignant neoplasm of other specified sites of bladder
DG4	Malignancies of upper respiratory tract	1889	Malignant neoplasm of bladder, part unspecified
DG4	Malignancies of upper respiratory tract	189	Malignant neoplasm of kidney and other and unspecified urinary organs
DG4	Malignancies of upper respiratory tract	1890	Malignant neoplasm of kidney, except pelvis
DG4	Malignancies of upper respiratory tract	1891	Malignant neoplasm of renal pelvis
DG4	Malignancies of upper respiratory tract	1892	Malignant neoplasm of ureter
DG4	Malignancies of upper respiratory tract	1893	Malignant neoplasm of urethra
DG4	Malignancies of upper respiratory tract	1894	Malignant neoplasm of paraurethral glands
DG4	Malignancies of upper respiratory tract	1898	Malignant neoplasm of other specified sites of urinary organs
DG4	Malignancies of upper respiratory tract	1899	Malignant neoplasm of urinary organ, site unspecified
DG4	Malignancies of upper respiratory tract	194	Malignant neoplasm of other endocrine glands and related structures

DG4	Malignancies of upper respiratory tract	1940	Malignant neoplasm of adrenal gland
DG4	Malignancies of upper respiratory tract	1941	Malignant neoplasm of parathyroid gland
DG4	Malignancies of upper respiratory tract	1943	Malignant neoplasm of pituitary gland and craniopharyngeal duct
DG4	Malignancies of upper respiratory tract	1944	Malignant neoplasm of pineal gland
DG4	Malignancies of upper respiratory tract	1945	Malignant neoplasm of carotid body
DG4	Malignancies of upper respiratory tract	1946	Malignant neoplasm of aortic body and other paraganglia
DG4	Malignancies of upper respiratory tract	1948	Malignant neoplasm of other endocrine glands and related structures
DG4	Malignancies of upper respiratory tract	1949	Malignant neoplasm of endocrine gland, site unspecified
DG4	Malignancies of upper respiratory tract	195	Malignant neoplasm of other and ill-defined sites
DG4	Malignancies of upper respiratory tract	1950	Malignant neoplasm of head, face, and neck
DG4	Malignancies of upper respiratory tract	1951	Malignant neoplasm of thorax
DG4	Malignancies of upper respiratory tract	1952	Malignant neoplasm of abdomen
DG4	Malignancies of upper respiratory tract	1953	Malignant neoplasm of pelvis
DG4	Malignancies of upper respiratory tract	1954	Malignant neoplasm of upper limb
DG4	Malignancies of upper respiratory tract	1955	Malignant neoplasm of lower limb
DG4	Malignancies of upper respiratory tract	1958	Malignant neoplasm of other specified sites
DG4	Malignancies of upper respiratory tract	198	Secondary malignant neoplasm of other specified sites
DG4	Malignancies of upper respiratory tract	1980	Secondary malignant neoplasm of kidney
DG4	Malignancies of upper respiratory tract	1981	Secondary malignant neoplasm of other urinary organs
DG4	Malignancies of upper respiratory tract	1982	Secondary malignant neoplasm of skin
DG4	Malignancies of upper respiratory tract	1983	Secondary malignant neoplasm of brain and spinal cord
DG4	Malignancies of upper respiratory tract	1984	Secondary malignant neoplasm of other parts of nervous system
DG4	Malignancies of upper respiratory tract	1985	Secondary malignant neoplasm of bone and bone marrow
DG4	Malignancies of upper respiratory tract	1986	Secondary malignant neoplasm of ovary
DG4	Malignancies of upper respiratory tract	1987	Secondary malignant neoplasm of adrenal gland

DG4	Malignancies of upper respiratory tract	1988	Other specified sites
DG4	Malignancies of upper respiratory tract	19881	Secondary malignant neoplasm of breast
DG4	Malignancies of upper respiratory tract	19882	Secondary malignant neoplasm of genital organs
DG4	Malignancies of upper respiratory tract	19889	Secondary malignant neoplasm of other specified sites
DG4	Malignancies of upper respiratory tract	199	Malignant neoplasm without specification of site
DG4	Malignancies of upper respiratory tract	1990	Disseminated malignant neoplasm without specification of site
DG4	Malignancies of upper respiratory tract	1991	Other malignant neoplasm without specification of site
DG4	Malignancies of upper respiratory tract	1992	Malignant neoplasm associated with transplant organ
DG4	Malignancies of upper respiratory tract	201	Hodgkin's disease
DG4	Malignancies of upper respiratory tract	2010	Hodgkin's paraganuloma
DG4	Malignancies of upper respiratory tract	20100	Hodgkin's paraganuloma, unspecified site, extranodal and solid organ sites
DG4	Malignancies of upper respiratory tract	20101	Hodgkin's paraganuloma, lymph nodes of head, face, and neck
DG4	Malignancies of upper respiratory tract	20102	Hodgkin's paraganuloma, intrathoracic lymph nodes
DG4	Malignancies of upper respiratory tract	20103	Hodgkin's paraganuloma, intra-abdominal lymph nodes
DG4	Malignancies of upper respiratory tract	20104	Hodgkin's paraganuloma, lymph nodes of axilla and upper limb
DG4	Malignancies of upper respiratory tract	20105	Hodgkin's paraganuloma, lymph nodes of inguinal region and lower limb
DG4	Malignancies of upper respiratory tract	20106	Hodgkin's paraganuloma, intrapelvic lymph nodes
DG4	Malignancies of upper respiratory tract	20107	Hodgkin's paraganuloma, spleen
DG4	Malignancies of upper respiratory tract	20108	Hodgkin's paraganuloma, lymph nodes of multiple sites
DG4	Malignancies of upper respiratory tract	2011	Hodgkin's granuloma
DG4	Malignancies of upper respiratory tract	20110	Hodgkin's granuloma, unspecified site, extranodal and solid organ sites
DG4	Malignancies of upper respiratory tract	20111	Hodgkin's granuloma, lymph nodes of head, face, and neck
DG4	Malignancies of upper respiratory tract	20112	Hodgkin's granuloma, intrathoracic lymph nodes
DG4	Malignancies of upper respiratory tract	20113	Hodgkin's granuloma, intra-abdominal lymph nodes
DG4	Malignancies of upper respiratory tract	20114	Hodgkin's granuloma, lymph nodes of axilla and upper limb

DG4	Malignancies of upper respiratory tract	20115	Hodgkin's granuloma, lymph nodes of inguinal region and lower limb
DG4	Malignancies of upper respiratory tract	20116	Hodgkin's granuloma, intrapelvic lymph nodes
DG4	Malignancies of upper respiratory tract	20117	Hodgkin's granuloma, spleen
DG4	Malignancies of upper respiratory tract	20118	Hodgkin's granuloma, lymph nodes of multiple sites
DG4	Malignancies of upper respiratory tract	2012	Hodgkin's sarcoma
DG4	Malignancies of upper respiratory tract	20120	Hodgkin's sarcoma, unspecified site, extranodal and solid organ sites
DG4	Malignancies of upper respiratory tract	20121	Hodgkin's sarcoma, lymph nodes of head, face, and neck
DG4	Malignancies of upper respiratory tract	20122	Hodgkin's sarcoma, intrathoracic lymph nodes
DG4	Malignancies of upper respiratory tract	20123	Hodgkin's sarcoma, intra-abdominal lymph nodes
DG4	Malignancies of upper respiratory tract	20124	Hodgkin's sarcoma, lymph nodes of axilla and upper limb
DG4	Malignancies of upper respiratory tract	20125	Hodgkin's sarcoma, lymph nodes of inguinal region and lower limb
DG4	Malignancies of upper respiratory tract	20126	Hodgkin's sarcoma, intrapelvic lymph nodes
DG4	Malignancies of upper respiratory tract	20127	Hodgkin's sarcoma, spleen
DG4	Malignancies of upper respiratory tract	20128	Hodgkin's sarcoma, lymph nodes of multiple sites
DG4	Malignancies of upper respiratory tract	2014	Lymphocytic-histiocytic predominance
DG4	Malignancies of upper respiratory tract	20140	Hodgkin's disease, lymphocytic-histiocytic predominance, unspecified site, extranodal and solid organ sites
DG4	Malignancies of upper respiratory tract	20141	Hodgkin's disease, lymphocytic-histiocytic predominance, lymph nodes of head, face, and neck
DG4	Malignancies of upper respiratory tract	20142	Hodgkin's disease, lymphocytic-histiocytic predominance, intrathoracic lymph nodes
DG4	Malignancies of upper respiratory tract	20143	Hodgkin's disease, lymphocytic-histiocytic predominance, intra-abdominal lymph nodes
DG4	Malignancies of upper respiratory tract	20144	Hodgkin's disease, lymphocytic-histiocytic predominance, lymph nodes of axilla and upper limb
DG4	Malignancies of upper respiratory tract	20145	Hodgkin's disease, lymphocytic-histiocytic predominance, lymph nodes of inguinal region and lower limb
DG4	Malignancies of upper respiratory tract	20146	Hodgkin's disease, lymphocytic-histiocytic predominance, intrapelvic lymph nodes
DG4	Malignancies of upper respiratory tract	20147	Hodgkin's disease, lymphocytic-histiocytic predominance, spleen
DG4	Malignancies of upper respiratory tract	20148	Hodgkin's disease, lymphocytic-histiocytic predominance, lymph nodes of multiple sites
DG4	Malignancies of upper respiratory tract	2015	Nodular sclerosis

DG4	Malignancies of upper respiratory tract	20150	Hodgkin's disease, nodular sclerosis, unspecified site, extranodal and solid organ sites
DG4	Malignancies of upper respiratory tract	20151	Hodgkin's disease, nodular sclerosis, lymph nodes of head, face, and neck
DG4	Malignancies of upper respiratory tract	20152	Hodgkin's disease, nodular sclerosis, intrathoracic lymph nodes
DG4	Malignancies of upper respiratory tract	20153	Hodgkin's disease, nodular sclerosis, intra-abdominal lymph nodes
DG4	Malignancies of upper respiratory tract	20154	Hodgkin's disease, nodular sclerosis, lymph nodes of axilla and upper limb
DG4	Malignancies of upper respiratory tract	20155	Hodgkin's disease, nodular sclerosis, lymph nodes of inguinal region and lower limb
DG4	Malignancies of upper respiratory tract	20156	Hodgkin's disease, nodular sclerosis, intrapelvic lymph nodes
DG4	Malignancies of upper respiratory tract	20157	Hodgkin's disease, nodular sclerosis, spleen
DG4	Malignancies of upper respiratory tract	20158	Hodgkin's disease, nodular sclerosis, lymph nodes of multiple sites
DG4	Malignancies of upper respiratory tract	2016	Mixed cellularity
DG4	Malignancies of upper respiratory tract	20160	Hodgkin's disease, mixed cellularity, unspecified site, extranodal and solid organ sites
DG4	Malignancies of upper respiratory tract	20161	Hodgkin's disease, mixed cellularity, lymph nodes of head, face, and neck
DG4	Malignancies of upper respiratory tract	20162	Hodgkin's disease, mixed cellularity, intrathoracic lymph nodes
DG4	Malignancies of upper respiratory tract	20163	Hodgkin's disease, mixed cellularity, intra-abdominal lymph nodes
DG4	Malignancies of upper respiratory tract	20164	Hodgkin's disease, mixed cellularity, lymph nodes of axilla and upper limb
DG4	Malignancies of upper respiratory tract	20165	Hodgkin's disease, mixed cellularity, lymph nodes of inguinal region and lower limb
DG4	Malignancies of upper respiratory tract	20166	Hodgkin's disease, mixed cellularity, intrapelvic lymph nodes
DG4	Malignancies of upper respiratory tract	20167	Hodgkin's disease, mixed cellularity, spleen
DG4	Malignancies of upper respiratory tract	20168	Hodgkin's disease, mixed cellularity, lymph nodes of multiple sites
DG4	Malignancies of upper respiratory tract	2017	Lymphocytic depletion
DG4	Malignancies of upper respiratory tract	20170	Hodgkin's disease, lymphocytic depletion, unspecified site, extranodal and solid organ sites
DG4	Malignancies of upper respiratory tract	20171	Hodgkin's disease, lymphocytic depletion, lymph nodes of head, face, and neck
DG4	Malignancies of upper respiratory tract	20172	Hodgkin's disease, lymphocytic depletion, intrathoracic lymph nodes
DG4	Malignancies of upper respiratory tract	20173	Hodgkin's disease, lymphocytic depletion, intra-abdominal lymph nodes
DG4	Malignancies of upper respiratory tract	20174	Hodgkin's disease, lymphocytic depletion, lymph nodes of axilla and upper limb

DG4	Malignancies of upper respiratory tract	20175	Hodgkin's disease, lymphocytic depletion, lymph nodes of inguinal region and lower limb
DG4	Malignancies of upper respiratory tract	20176	Hodgkin's disease, lymphocytic depletion, intrapelvic lymph nodes
DG4	Malignancies of upper respiratory tract	20177	Hodgkin's disease, lymphocytic depletion, spleen
DG4	Malignancies of upper respiratory tract	20178	Hodgkin's disease, lymphocytic depletion, lymph nodes of multiple sites
DG4	Malignancies of upper respiratory tract	2019	Hodgkin's disease, unspecified
DG4	Malignancies of upper respiratory tract	20190	Hodgkin's disease, unspecified type, unspecified site, extranodal and solid organ sites
DG4	Malignancies of upper respiratory tract	20191	Hodgkin's disease, unspecified type, lymph nodes of head, face, and neck
DG4	Malignancies of upper respiratory tract	20192	Hodgkin's disease, unspecified type, intrathoracic lymph nodes
DG4	Malignancies of upper respiratory tract	20193	Hodgkin's disease, unspecified type, intra-abdominal lymph nodes
DG4	Malignancies of upper respiratory tract	20194	Hodgkin's disease, unspecified type, lymph nodes of axilla and upper limb
DG4	Malignancies of upper respiratory tract	20195	Hodgkin's disease, unspecified type, lymph nodes of inguinal region and lower limb
DG4	Malignancies of upper respiratory tract	20196	Hodgkin's disease, unspecified type, intrapelvic lymph nodes
DG4	Malignancies of upper respiratory tract	20197	Hodgkin's disease, unspecified type, spleen
DG4	Malignancies of upper respiratory tract	20198	Hodgkin's disease, unspecified type, lymph nodes of multiple sites
DG4	Malignancies of upper respiratory tract	206	Monocytic leukemia
DG4	Malignancies of upper respiratory tract	2060	Acute
DG4	Malignancies of upper respiratory tract	20600	Acute monocytic leukemia, without mention of having achieved remission
DG4	Malignancies of upper respiratory tract	20601	Acute monocytic leukemia, in remission
DG4	Malignancies of upper respiratory tract	20602	Acute monocytic leukemia, in relapse
DG4	Malignancies of upper respiratory tract	2061	Chronic
DG4	Malignancies of upper respiratory tract	20610	Chronic monocytic leukemia, without mention of having achieved remission
DG4	Malignancies of upper respiratory tract	20611	Chronic monocytic leukemia, in remission
DG4	Malignancies of upper respiratory tract	20612	Chronic monocytic leukemia, in relapse
DG4	Malignancies of upper respiratory tract	2062	Subacute
DG4	Malignancies of upper respiratory tract	20620	Subacute monocytic leukemia, without mention of having achieved remission

DG4	Malignancies of upper respiratory tract	20621	Subacute monocytic leukemia, in remission
DG4	Malignancies of upper respiratory tract	20622	Subacute monocytic leukemia, in relapse
DG4	Malignancies of upper respiratory tract	2068	Other monocytic leukemia
DG4	Malignancies of upper respiratory tract	20680	Other monocytic leukemia, without mention of having achieved remission
DG4	Malignancies of upper respiratory tract	20681	Other monocytic leukemia, in remission
DG4	Malignancies of upper respiratory tract	20682	Other monocytic leukemia, in relapse
DG4	Malignancies of upper respiratory tract	2069	Unspecified monocytic leukemia
DG4	Malignancies of upper respiratory tract	20690	Unspecified monocytic leukemia, without mention of having achieved remission
DG4	Malignancies of upper respiratory tract	20691	Unspecified monocytic leukemia, in remission
DG4	Malignancies of upper respiratory tract	20692	Unspecified monocytic leukemia, in relapse
DG4	Malignancies of upper respiratory tract	207	Other specified leukemia
DG4	Malignancies of upper respiratory tract	2070	Acute erythremia and erythroleukemia
DG4	Malignancies of upper respiratory tract	20700	Acute erythremia and erythroleukemia, without mention of having achieved remission
DG4	Malignancies of upper respiratory tract	20701	Acute erythremia and erythroleukemia, in remission
DG4	Malignancies of upper respiratory tract	20702	Acute erythremia and erythroleukemia, in relapse
DG4	Malignancies of upper respiratory tract	2071	Chronic erythremia
DG4	Malignancies of upper respiratory tract	20710	Chronic erythremia, without mention of having achieved remission
DG4	Malignancies of upper respiratory tract	20711	Chronic erythremia, in remission
DG4	Malignancies of upper respiratory tract	20712	Chronic erythremia, in relapse
DG4	Malignancies of upper respiratory tract	2072	Megakaryocytic leukemia
DG4	Malignancies of upper respiratory tract	20720	Megakaryocytic leukemia, without mention of having achieved remission
DG4	Malignancies of upper respiratory tract	20721	Megakaryocytic leukemia, in remission
DG4	Malignancies of upper respiratory tract	20722	Megakaryocytic leukemia, in relapse
DG4	Malignancies of upper respiratory tract	2078	Other specified leukemia
DG4	Malignancies of upper respiratory tract	20780	Other specified leukemia, without mention of having achieved remission

DG4	Malignancies of upper respiratory tract	20781	Other specified leukemia, in remission
DG4	Malignancies of upper respiratory tract	20782	Other specified leukemia, in relapse
DG4	Malignancies of upper respiratory tract	208	Leukemia of unspecified cell type
DG4	Malignancies of upper respiratory tract	2080	Acute
DG4	Malignancies of upper respiratory tract	20800	Acute leukemia of unspecified cell type, without mention of having achieved remission
DG4	Malignancies of upper respiratory tract	20801	Acute leukemia of unspecified cell type, in remission
DG4	Malignancies of upper respiratory tract	20802	Acute leukemia of unspecified cell type, in relapse
DG4	Malignancies of upper respiratory tract	2081	Chronic
DG4	Malignancies of upper respiratory tract	20810	Chronic leukemia of unspecified cell type, without mention of having achieved remission
DG4	Malignancies of upper respiratory tract	20811	Chronic leukemia of unspecified cell type, in remission
DG4	Malignancies of upper respiratory tract	20812	Chronic leukemia of unspecified cell type, in relapse
DG4	Malignancies of upper respiratory tract	2082	Subacute
DG4	Malignancies of upper respiratory tract	20820	Subacute leukemia of unspecified cell type, without mention of having achieved remission
DG4	Malignancies of upper respiratory tract	20821	Subacute leukemia of unspecified cell type, in remission
DG4	Malignancies of upper respiratory tract	20822	Subacute leukemia of unspecified cell type, in relapse
DG4	Malignancies of upper respiratory tract	2088	Other leukemia of unspecified cell type
DG4	Malignancies of upper respiratory tract	20880	Other leukemia of unspecified cell type, without mention of having achieved remission
DG4	Malignancies of upper respiratory tract	20881	Other leukemia of unspecified cell type, in remission
DG4	Malignancies of upper respiratory tract	20882	Other leukemia of unspecified cell type, in relapse
DG4	Malignancies of upper respiratory tract	2089	Unspecified leukemia
DG4	Malignancies of upper respiratory tract	20890	Unspecified leukemia, without mention of having achieved remission
DG4	Malignancies of upper respiratory tract	20891	Unspecified leukemia, in remission
DG4	Malignancies of upper respiratory tract	20892	Unspecified leukemia, in relapse
DG4	Malignancies of upper respiratory tract	234	Carcinoma in situ of other and unspecified sites
DG4	Malignancies of upper respiratory tract	2340	Carcinoma in situ of eye

DG4	Malignancies of upper respiratory tract	2348	Carcinoma in situ of other specified sites
DG4	Malignancies of upper respiratory tract	2349	Carcinoma in situ, site unspecified
DG4	Malignancies of upper respiratory tract	23877	Post-transplant lymphoproliferative disorder (PTLD)
DG4	Malignancies of upper respiratory tract	2396	Neoplasm of unspecified nature of brain
DG5	Malignancies of lower respiratory tract	162	Malignant neoplasm of trachea, bronchus, and lung
DG5	Malignancies of lower respiratory tract	1620	Malignant neoplasm of trachea
DG5	Malignancies of lower respiratory tract	1622	Malignant neoplasm of main bronchus
DG5	Malignancies of lower respiratory tract	1623	Malignant neoplasm of upper lobe, bronchus or lung
DG5	Malignancies of lower respiratory tract	1624	Malignant neoplasm of middle lobe, bronchus or lung
DG5	Malignancies of lower respiratory tract	1625	Malignant neoplasm of lower lobe, bronchus or lung
DG5	Malignancies of lower respiratory tract	1628	Malignant neoplasm of other parts of bronchus or lung
DG5	Malignancies of lower respiratory tract	1629	Malignant neoplasm of bronchus and lung, unspecified
DG5	Malignancies of lower respiratory tract	163	Malignant neoplasm of pleura
DG5	Malignancies of lower respiratory tract	1630	Malignant neoplasm of parietal pleura
DG5	Malignancies of lower respiratory tract	1631	Malignant neoplasm of visceral pleura
DG5	Malignancies of lower respiratory tract	1638	Malignant neoplasm of other specified sites of pleura
DG5	Malignancies of lower respiratory tract	1639	Malignant neoplasm of pleura, unspecified
DG5	Malignancies of lower respiratory tract	165	Malignant neoplasm of other and ill-defined sites within the respiratory system and intrathoracic organs
DG5	Malignancies of lower respiratory tract	1650	Malignant neoplasm of upper respiratory tract, part unspecified
DG5	Malignancies of lower respiratory tract	1658	Malignant neoplasm of other sites within the respiratory system and intrathoracic organs
DG5	Malignancies of lower respiratory tract	1659	Malignant neoplasm of ill-defined sites within the respiratory system
DG5	Malignancies of lower respiratory tract	197	Secondary malignant neoplasm of respiratory and digestive systems
DG5	Malignancies of lower respiratory tract	1970	Secondary malignant neoplasm of lung
DG5	Malignancies of lower respiratory tract	1971	Secondary malignant neoplasm of mediastinum
DG5	Malignancies of lower respiratory tract	1972	Secondary malignant neoplasm of pleura

DG5	Malignancies of lower respiratory tract	1973	Secondary malignant neoplasm of other respiratory organs
DG5	Malignancies of lower respiratory tract	1974	Secondary malignant neoplasm of small intestine including duodenum
DG5	Malignancies of lower respiratory tract	1975	Secondary malignant neoplasm of large intestine and rectum
DG5	Malignancies of lower respiratory tract	1976	Secondary malignant neoplasm of retroperitoneum and peritoneum
DG5	Malignancies of lower respiratory tract	1977	Malignant neoplasm of liver, secondary
DG5	Malignancies of lower respiratory tract	1978	Secondary malignant neoplasm of other digestive organs and spleen
DG5	Malignancies of lower respiratory tract	231	Carcinoma in situ of respiratory system
DG5	Malignancies of lower respiratory tract	2310	Carcinoma in situ of larynx
DG5	Malignancies of lower respiratory tract	2311	Carcinoma in situ of trachea
DG5	Malignancies of lower respiratory tract	2312	Carcinoma in situ of bronchus and lung
DG5	Malignancies of lower respiratory tract	2318	Carcinoma in situ of other specified parts of respiratory system
DG5	Malignancies of lower respiratory tract	2319	Carcinoma in situ of respiratory system, part unspecified
DG6	Central nervous diseases	38002	Chronic perichondritis of pinna
DG6	Central nervous diseases	38014	Malignant otitis externa
DG6	Central nervous diseases	38015	Chronic mycotic otitis externa
DG6	Central nervous diseases	38016	Other chronic infective otitis externa
DG6	Central nervous diseases	38023	Other chronic otitis externa
DG6	Central nervous diseases	3811	Chronic serous otitis media
DG6	Central nervous diseases	38110	Chronic serous otitis media, simple or unspecified
DG6	Central nervous diseases	38119	Other chronic serous otitis media
DG6	Central nervous diseases	3812	Chronic mucoid otitis media
DG6	Central nervous diseases	38120	Chronic mucoid otitis media, simple or unspecified
DG6	Central nervous diseases	38129	Other chronic mucoid otitis media
DG6	Central nervous diseases	3813	Other and unspecified chronic nonsuppurative otitis media
DG6	Central nervous diseases	38152	Chronic Eustachian salpingitis

DG6	Central nervous diseases	3821	Chronic tubotympanic suppurative otitis media
DG6	Central nervous diseases	3822	Chronic atticoantral suppurative otitis media
DG6	Central nervous diseases	3823	Unspecified chronic suppurative otitis media
DG6	Central nervous diseases	472	Chronic pharyngitis and nasopharyngitis
DG6	Central nervous diseases	4720	Chronic rhinitis
DG6	Central nervous diseases	4721	Chronic pharyngitis
DG6	Central nervous diseases	4722	Chronic nasopharyngitis
DG6	Central nervous diseases	473	Chronic sinusitis
DG6	Central nervous diseases	4730	Chronic maxillary sinusitis
DG6	Central nervous diseases	4731	Chronic frontal sinusitis
DG6	Central nervous diseases	4732	Chronic ethmoidal sinusitis
DG6	Central nervous diseases	4733	Chronic sphenoidal sinusitis
DG6	Central nervous diseases	4738	Other chronic sinusitis
DG6	Central nervous diseases	4739	Unspecified sinusitis (chronic)
DG6	Central nervous diseases	476	Chronic laryngitis and laryngotracheitis
DG6	Central nervous diseases	4760	Chronic laryngitis
DG6	Central nervous diseases	4761	Chronic laryngotracheitis
DG6	Central nervous diseases	477	Allergic rhinitis
DG6	Central nervous diseases	4770	Allergic rhinitis due to pollen
DG6	Central nervous diseases	4771	Allergic rhinitis due to food
DG6	Central nervous diseases	4772	Allergic rhinitis due to animal (cat) (dog) hair and dander
DG6	Central nervous diseases	4778	Allergic rhinitis due to other allergen
DG6	Central nervous diseases	4779	Allergic rhinitis, cause unspecified
DG6	Central nervous diseases	47811	Nasal mucositis (ulcerative)
DG6	Central nervous diseases	4783	Paralysis of vocal cords or larynx

DG6	Central nervous diseases	47830	Paralysis of vocal cords or larynx, unspecified
DG6	Central nervous diseases	47831	Unilateral paralysis of vocal cords or larynx, partial
DG6	Central nervous diseases	47832	Unilateral paralysis of vocal cords or larynx, complete
DG6	Central nervous diseases	47833	Bilateral paralysis of vocal cords or larynx, partial
DG6	Central nervous diseases	47834	Bilateral paralysis of vocal cords or larynx, complete
DG7	Hematological alterations	2800	Iron deficiency anemia secondary to blood loss (chronic)
DG7	Hematological alterations	284	Aplastic anemia and other bone marrow failure syndromes
DG7	Hematological alterations	2840	Constitutional aplastic anemia
DG7	Hematological alterations	28401	Constitutional red blood cell aplasia
DG7	Hematological alterations	28409	Other constitutional aplastic anemia
DG7	Hematological alterations	2841	Pancytopenia
DG7	Hematological alterations	28411	Antineoplastic chemotherapy induced pancytopenia
DG7	Hematological alterations	28412	Other drug-induced pancytopenia
DG7	Hematological alterations	28419	Other pancytopenia
DG7	Hematological alterations	2842	Myelophthisis
DG7	Hematological alterations	2848	Other specified aplastic anemias
DG7	Hematological alterations	28481	Red cell aplasia (acquired)(adult)(with thymoma)
DG7	Hematological alterations	28489	Other specified aplastic anemias
DG7	Hematological alterations	2849	Aplastic anemia, unspecified
DG7	Hematological alterations	286	Coagulation defects
DG7	Hematological alterations	2860	Congenital factor VIII disorder
DG7	Hematological alterations	2861	Congenital factor IX disorder
DG7	Hematological alterations	2862	Congenital factor XI deficiency
DG7	Hematological alterations	2863	Congenital deficiency of other clotting factors
DG7	Hematological alterations	2864	Von Willebrand's disease

DG7	Hematological alterations	2865	Hemorrhagic disorder due to intrinsic circulating anticoagulants, antibodies, or inhibitors
DG7	Hematological alterations	28652	Acquired hemophilia
DG7	Hematological alterations	28653	Antiphospholipid antibody with hemorrhagic disorder
DG7	Hematological alterations	28659	Other hemorrhagic disorder due to intrinsic circulating anticoagulants, antibodies, or inhibitors
DG7	Hematological alterations	2866	Defibrination syndrome
DG7	Hematological alterations	2867	Acquired coagulation factor deficiency
DG7	Hematological alterations	2869	Other and unspecified coagulation defects
DG7	Hematological alterations	2871	Qualitative platelet defects
DG7	Hematological alterations	2873	Primary thrombocytopenia
DG7	Hematological alterations	28730	Primary thrombocytopenia,unspecified
DG7	Hematological alterations	28731	Immune thrombocytopenic purpura
DG7	Hematological alterations	28732	Evans' syndrome
DG7	Hematological alterations	28733	Congenital and hereditary thrombocytopenic purpura
DG7	Hematological alterations	28739	Other primary thrombocytopenia
DG7	Hematological alterations	2874	Secondary thrombocytopenia
DG7	Hematological alterations	2875	Thrombocytopenia, unspecified
DG7	Hematological alterations	288	Diseases of white blood cells
DG7	Hematological alterations	2880	Neutropenia
DG7	Hematological alterations	28800	Neutropenia, unspecified
DG7	Hematological alterations	28801	Congenital neutropenia
DG7	Hematological alterations	28802	Cyclic neutropenia
DG7	Hematological alterations	28803	Drug induced neutropenia
DG7	Hematological alterations	28804	Neutropenia due to infection
DG7	Hematological alterations	28809	Other neutropenia
DG7	Hematological alterations	2881	Functional disorders of polymorphonuclear neutrophils

DG7	Hematological alterations	2882	Genetic anomalies of leukocytes
DG7	Hematological alterations	2883	Eosinophilia
DG7	Hematological alterations	2884	Hemophagocytic syndromes
DG7	Hematological alterations	2885	Decreased white blood cell count
DG7	Hematological alterations	28850	Leukocytopenia, unspecified
DG7	Hematological alterations	28851	Lymphocytopenia
DG7	Hematological alterations	28859	Other decreased white blood cell count
DG7	Hematological alterations	2886	Elevated white blood cell count
DG7	Hematological alterations	28860	Leukocytosis, unspecified
DG7	Hematological alterations	28861	Lymphocytosis (symptomatic)
DG7	Hematological alterations	28862	Leukemoid reaction
DG7	Hematological alterations	28863	Monocytosis (symptomatic)
DG7	Hematological alterations	28864	Plasmacytosis
DG7	Hematological alterations	28865	Basophilia
DG7	Hematological alterations	28866	Bandemia
DG7	Hematological alterations	28869	Other elevated white blood cell count
DG7	Hematological alterations	2888	Other specified disease of white blood cells
DG7	Hematological alterations	2889	Unspecified disease of white blood cells
DG7	Hematological alterations	2891	Chronic lymphadenitis
DG7	Hematological alterations	28951	Chronic congestive splenomegaly
DG7	Hematological alterations	28952	Splenic sequestration
DG7	Hematological alterations	28953	Neutropenic splenomegaly
DG7	Hematological alterations	28981	Primary hypercoagulable state
DG7	Hematological alterations	28982	Secondary hypercoagulable state
DG7	Hematological alterations	28983	Myelofibrosis

DG7	Hematological alterations	28984	Heparin-induced thrombocytopenia (HIT)
DG7	Hematological alterations	28989	Other specified diseases of blood and blood-forming organs
DG8	Digestive alterations	251	Other disorders of pancreatic internal secretion
DG8	Digestive alterations	2510	Hypoglycemic coma
DG8	Digestive alterations	2511	Other specified hypoglycemia
DG8	Digestive alterations	2512	Hypoglycemia, unspecified
DG8	Digestive alterations	2513	Postsurgical hypoinsulinemia
DG8	Digestive alterations	2514	Abnormality of secretion of glucagon
DG8	Digestive alterations	2515	Abnormality of secretion of gastrin
DG8	Digestive alterations	2518	Other specified disorders of pancreatic internal secretion
DG8	Digestive alterations	2519	Unspecified disorder of pancreatic internal secretion
DG8	Digestive alterations	53011	Reflux esophagitis
DG8	Digestive alterations	53013	Eosinophilic esophagitis
DG8	Digestive alterations	5302	Ulcer of esophagus
DG8	Digestive alterations	53020	Ulcer of esophagus without bleeding
DG8	Digestive alterations	53021	Ulcer of esophagus with bleeding
DG8	Digestive alterations	5303	Stricture and stenosis of esophagus
DG8	Digestive alterations	5305	Dyskinesia of esophagus
DG8	Digestive alterations	53081	Esophageal reflux
DG8	Digestive alterations	53084	Tracheoesophageal fistula
DG8	Digestive alterations	53085	Barrett's esophagus
DG8	Digestive alterations	53086	Infection of esophagostomy
DG8	Digestive alterations	53087	Mechanical complication of esophagostomy
DG8	Digestive alterations	53141	Chronic or unspecified gastric ulcer with hemorrhage, with obstruction
DG8	Digestive alterations	5315	Chronic or unspecified with perforation
DG8	Digestive alterations	53150	Chronic or unspecified gastric ulcer with perforation, without mention of obstruction
DG8	Digestive alterations	53151	Chronic or unspecified gastric ulcer with perforation, with obstruction
DG8	Digestive alterations	5316	Chronic or unspecified with hemorrhage and perforation
DG8	Digestive alterations	53160	Chronic or unspecified gastric ulcer with hemorrhage and perforation, without mention of obstruction
DG8	Digestive alterations	53161	Chronic or unspecified gastric ulcer with hemorrhage and perforation, with obstruction
DG8	Digestive alterations	5317	Chronic without mention of hemorrhage or perforation
DG8	Digestive alterations	53170	Chronic gastric ulcer without mention of hemorrhage or perforation, without mention of obstruction
DG8	Digestive alterations	53171	Chronic gastric ulcer without mention of hemorrhage or perforation, with obstruction
DG8	Digestive alterations	5319	Unspecified as acute or chronic, without mention of hemorrhage or perforation
DG8	Digestive alterations	53190	Gastric ulcer, unspecified as acute or chronic, without mention of hemorrhage or perforation, without mention of obstruction

DG8	Digestive alterations	53191	Gastric ulcer, unspecified as acute or chronic, without mention of hemorrhage or perforation, with obstruction
DG8	Digestive alterations	53241	Chronic or unspecified duodenal ulcer with hemorrhage, with obstruction
DG8	Digestive alterations	5325	Chronic or unspecified with perforation
DG8	Digestive alterations	53250	Chronic or unspecified duodenal ulcer with perforation, without mention of obstruction
DG8	Digestive alterations	53251	Chronic or unspecified duodenal ulcer with perforation, with obstruction
DG8	Digestive alterations	5326	Chronic or unspecified with hemorrhage and perforation
DG8	Digestive alterations	53260	Chronic or unspecified duodenal ulcer with hemorrhage and perforation, without mention of obstruction
DG8	Digestive alterations	53261	Chronic or unspecified duodenal ulcer with hemorrhage and perforation, with obstruction
DG8	Digestive alterations	5327	Chronic without mention of hemorrhage or perforation
DG8	Digestive alterations	53270	Chronic duodenal ulcer without mention of hemorrhage or perforation, without mention of obstruction
DG8	Digestive alterations	53271	Chronic duodenal ulcer without mention of hemorrhage or perforation, with obstruction
DG8	Digestive alterations	5329	Unspecified as acute or chronic, without mention of hemorrhage or perforation
DG8	Digestive alterations	53290	Duodenal ulcer, unspecified as acute or chronic, without hemorrhage or perforation, without mention of obstruction
DG8	Digestive alterations	53291	Duodenal ulcer, unspecified as acute or chronic, without mention of hemorrhage or perforation, with obstruction
DG8	Digestive alterations	5334	Chronic or unspecified with hemorrhage
DG8	Digestive alterations	53340	Chronic or unspecified peptic ulcer of unspecified site with hemorrhage, without mention of obstruction
DG8	Digestive alterations	53341	Chronic or unspecified peptic ulcer of unspecified site with hemorrhage, with obstruction
DG8	Digestive alterations	5335	Chronic or unspecified with perforation
DG8	Digestive alterations	53350	Chronic or unspecified peptic ulcer of unspecified site with perforation, without mention of obstruction
DG8	Digestive alterations	53351	Chronic or unspecified peptic ulcer of unspecified site with perforation, with obstruction
DG8	Digestive alterations	5336	Chronic or unspecified with hemorrhage and perforation
DG8	Digestive alterations	53360	Chronic or unspecified peptic ulcer of unspecified site with hemorrhage and perforation, without mention of obstruction
DG8	Digestive alterations	53361	Chronic or unspecified peptic ulcer of unspecified site with hemorrhage and perforation, with obstruction
DG8	Digestive alterations	5337	Chronic without mention of hemorrhage or perforation
DG8	Digestive alterations	53370	Chronic peptic ulcer of unspecified site without mention of hemorrhage or perforation, without mention of obstruction
DG8	Digestive alterations	53371	Chronic peptic ulcer of unspecified site without mention of hemorrhage or perforation, with obstruction
DG8	Digestive alterations	5339	Unspecified as acute or chronic, without mention of hemorrhage or perforation

DG8	Digestive alterations	53390	Peptic ulcer of unspecified site, unspecified as acute or chronic, without mention of hemorrhage or perforation, without mention of obstruction
DG8	Digestive alterations	53391	Peptic ulcer of unspecified site, unspecified as acute or chronic, without mention of hemorrhage or perforation, with obstruction
DG8	Digestive alterations	5344	Chronic or unspecified with hemorrhage
DG8	Digestive alterations	53440	Chronic or unspecified gastrojejunal ulcer with hemorrhage, without mention of obstruction
DG8	Digestive alterations	53441	Chronic or unspecified gastrojejunal ulcer, with hemorrhage, with obstruction
DG8	Digestive alterations	5345	Chronic or unspecified with perforation
DG8	Digestive alterations	53450	Chronic or unspecified gastrojejunal ulcer with perforation, without mention of obstruction
DG8	Digestive alterations	53451	Chronic or unspecified gastrojejunal ulcer with perforation, with obstruction
DG8	Digestive alterations	5346	Chronic or unspecified with hemorrhage and perforation
DG8	Digestive alterations	53460	Chronic or unspecified gastrojejunal ulcer with hemorrhage and perforation, without mention of obstruction
DG8	Digestive alterations	53461	Chronic or unspecified gastrojejunal ulcer with hemorrhage and perforation, with obstruction
DG8	Digestive alterations	5347	Chronic without mention of hemorrhage or perforation
DG8	Digestive alterations	53470	Chronic gastrojejunal ulcer without mention of hemorrhage or perforation, without mention of obstruction
DG8	Digestive alterations	53471	Chronic gastrojejunal ulcer without mention of hemorrhage or perforation, with obstruction
DG8	Digestive alterations	5349	Unspecified as acute or chronic, without mention of hemorrhage or perforation
DG8	Digestive alterations	53490	Gastrojejunal ulcer, unspecified as acute or chronic, without mention of hemorrhage or perforation, without mention of obstruction
DG8	Digestive alterations	53491	Gastrojejunal ulcer, unspecified as acute or chronic, without mention of hemorrhage or perforation, with obstruction
DG8	Digestive alterations	5351	Atrophic gastritis
DG8	Digestive alterations	53510	Atrophic gastritis, without mention of hemorrhage
DG8	Digestive alterations	53511	Atrophic gastritis, with hemorrhage
DG8	Digestive alterations	5353	Alcoholic gastritis
DG8	Digestive alterations	53530	Alcoholic gastritis, without mention of hemorrhage
DG8	Digestive alterations	53531	Alcoholic gastritis, with hemorrhage
DG8	Digestive alterations	5357	Eosinophilic gastritis
DG8	Digestive alterations	53570	Eosinophilic gastritis, without mention of hemorrhage
DG8	Digestive alterations	53571	Eosinophilic gastritis, with hemorrhage
DG8	Digestive alterations	5372	Chronic duodenal ileus
DG8	Digestive alterations	556	Ulcerative colitis
DG8	Digestive alterations	5560	Ulcerative (chronic) enterocolitis
DG8	Digestive alterations	5561	Ulcerative (chronic) ileocolitis
DG8	Digestive alterations	5562	Ulcerative (chronic) proctitis
DG8	Digestive alterations	5563	Ulcerative (chronic) proctosigmoiditis
DG8	Digestive alterations	5564	Pseudopolyposis of colon

DG8	Digestive alterations	5565	Left-sided ulcerative (chronic) colitis
DG8	Digestive alterations	5566	Universal ulcerative (chronic) colitis
DG8	Digestive alterations	5568	Other ulcerative colitis
DG8	Digestive alterations	5569	Ulcerative colitis, unspecified
DG8	Digestive alterations	5584	Eosinophilic gastroenteritis and colitis
DG8	Digestive alterations	55841	Eosinophilic gastroenteritis
DG8	Digestive alterations	55842	Eosinophilic colitis
DG8	Digestive alterations	562	Diverticula of intestine
DG8	Digestive alterations	5620	Small intestine
DG8	Digestive alterations	56200	Diverticulosis of small intestine (without mention of hemorrhage)
DG8	Digestive alterations	56201	Diverticulitis of small intestine (without mention of hemorrhage)
DG8	Digestive alterations	56202	Diverticulosis of small intestine with hemorrhage
DG8	Digestive alterations	56203	Diverticulitis of small intestine with hemorrhage
DG8	Digestive alterations	5621	Colon
DG8	Digestive alterations	56210	Diverticulosis of colon (without mention of hemorrhage)
DG8	Digestive alterations	56211	Diverticulitis of colon (without mention of hemorrhage)
DG8	Digestive alterations	56212	Diverticulosis of colon with hemorrhage
DG8	Digestive alterations	56213	Diverticulitis of colon with hemorrhage
DG8	Digestive alterations	5641	Irritable bowel syndrome
DG8	Digestive alterations	56481	Neurogenic bowel
DG8	Digestive alterations	5696	Colostomy and enterostomy complications
DG8	Digestive alterations	56960	Colostomy and enterostomy complication, unspecified
DG8	Digestive alterations	56961	Infection of colostomy or enterostomy
DG8	Digestive alterations	56962	Mechanical complication of colostomy and enterostomy
DG8	Digestive alterations	56969	Other colostomy and enterostomy complication
DG8	Digestive alterations	571	Chronic liver disease and cirrhosis
DG8	Digestive alterations	5710	Alcoholic fatty liver
DG8	Digestive alterations	5711	Acute alcoholic hepatitis
DG8	Digestive alterations	5712	Alcoholic cirrhosis of liver
DG8	Digestive alterations	5713	Alcoholic liver damage, unspecified
DG8	Digestive alterations	5714	Chronic hepatitis
DG8	Digestive alterations	57140	Chronic hepatitis, unspecified
DG8	Digestive alterations	57141	Chronic persistent hepatitis
DG8	Digestive alterations	57142	Autoimmune hepatitis
DG8	Digestive alterations	57149	Other chronic hepatitis
DG8	Digestive alterations	5715	Cirrhosis of liver without mention of alcohol
DG8	Digestive alterations	5716	Biliary cirrhosis
DG8	Digestive alterations	5718	Other chronic nonalcoholic liver disease
DG8	Digestive alterations	5719	Unspecified chronic liver disease without mention of alcohol
DG8	Digestive alterations	5723	Portal hypertension
DG8	Digestive alterations	5724	Hepatorenal syndrome
DG8	Digestive alterations	5728	Other sequelae of chronic liver disease
DG8	Digestive alterations	573	Other disorders of liver
DG8	Digestive alterations	5730	Chronic passive congestion of liver
DG8	Digestive alterations	5731	Hepatitis in viral diseases classified elsewhere

DG8	Digestive alterations	5732	Hepatitis in other infectious diseases classified elsewhere
DG8	Digestive alterations	5733	Hepatitis, unspecified
DG8	Digestive alterations	5734	Hepatic infarction
DG8	Digestive alterations	5735	Hepatopulmonary syndrome
DG8	Digestive alterations	5738	Other specified disorders of liver
DG8	Digestive alterations	5739	Unspecified disorder of liver
DG8	Digestive alterations	5771	Chronic pancreatitis
DG8	Digestive alterations	5790	Celiac disease
DG8	Digestive alterations	5792	Blind loop syndrome
DG8	Digestive alterations	5793	Other and unspecified postsurgical nonabsorption
DG8	Digestive alterations	5794	Pancreatic steatorrhea
DG8	Digestive alterations	5798	Other specified intestinal malabsorption
DG8	Digestive alterations	5799	Unspecified intestinal malabsorption
DG8	Digestive alterations	750	Other congenital anomalies of upper alimentary tract
DG8	Digestive alterations	7500	Tongue tie
DG8	Digestive alterations	7501	Other anomalies of tongue
DG8	Digestive alterations	75010	Congenital anomaly of tongue, unspecified
DG8	Digestive alterations	75011	Aglossia
DG8	Digestive alterations	75012	Congenital adhesions of tongue
DG8	Digestive alterations	75013	Fissure of tongue
DG8	Digestive alterations	75015	Macroglossia
DG8	Digestive alterations	75016	Microglossia
DG8	Digestive alterations	75019	Other congenital anomalies of tongue
DG8	Digestive alterations	7502	Other specified anomalies of mouth and pharynx
DG8	Digestive alterations	75021	Absence of salivary gland
DG8	Digestive alterations	75022	Accessory salivary gland
DG8	Digestive alterations	75023	Atresia, salivary duct
DG8	Digestive alterations	75024	Congenital fistula of salivary gland
DG8	Digestive alterations	75025	Congenital fistula of lip
DG8	Digestive alterations	75026	Other specified anomalies of mouth
DG8	Digestive alterations	75027	Diverticulum of pharynx
DG8	Digestive alterations	75029	Other specified anomalies of pharynx
DG8	Digestive alterations	7503	Tracheoesophageal fistula, esophageal atresia and stenosis
DG8	Digestive alterations	7504	Other specified anomalies of esophagus
DG8	Digestive alterations	7505	Congenital hypertrophic pyloric stenosis
DG8	Digestive alterations	7506	Congenital hiatus hernia
DG8	Digestive alterations	7507	Other specified anomalies of stomach
DG8	Digestive alterations	7508	Other specified anomalies of upper alimentary tract
DG8	Digestive alterations	7509	Unspecified anomaly of upper alimentary tract
DG8	Digestive alterations	7876	Incontinence of feces
DG8	Digestive alterations	78951	Malignant ascites
DG9	Trauma	887	Traumatic amputation of arm and hand (complete) (partial)
DG9	Trauma	8870	Traumatic amputation of arm and hand (complete) (partial), unilateral, below elbow, without mention of complication
DG9	Trauma	8871	Traumatic amputation of arm and hand (complete) (partial), unilateral, below elbow, complicated

DG9	Trauma	8872	Traumatic amputation of arm and hand (complete) (partial), unilateral, at or above elbow, without mention of complication
DG9	Trauma	8873	Traumatic amputation of arm and hand (complete) (partial), unilateral, at or above elbow, complicated
DG9	Trauma	8874	Traumatic amputation of arm and hand (complete) (partial), unilateral, level not specified, without mention of complication
DG9	Trauma	8875	Traumatic amputation of arm and hand (complete) (partial), unilateral, level not specified, complicated
DG9	Trauma	8876	Traumatic amputation of arm and hand (complete) (partial), bilateral [any level], without mention of complication
DG9	Trauma	8877	Traumatic amputation of arm and hand (complete) (partial), bilateral [any level], complicated
DG9	Trauma	896	Traumatic amputation of foot (complete) (partial)
DG9	Trauma	8960	Traumatic amputation of foot (complete) (partial), unilateral, without mention of complication
DG9	Trauma	8961	Traumatic amputation of foot (complete) (partial), unilateral, complicated
DG9	Trauma	8962	Traumatic amputation of foot (complete) (partial), bilateral, without mention of complication
DG9	Trauma	8963	Traumatic amputation of foot (complete) (partial), bilateral, complicated
DG9	Trauma	897	Traumatic amputation of leg(s) (complete) (partial)
DG9	Trauma	8970	Traumatic amputation of leg(s) (complete) (partial), unilateral, below knee, without mention of complication
DG9	Trauma	8971	Traumatic amputation of leg(s) (complete) (partial), unilateral, below knee, complicated
DG9	Trauma	8972	Traumatic amputation of leg(s) (complete) (partial), unilateral, at or above knee, without mention of complication
DG9	Trauma	8973	Traumatic amputation of leg(s) (complete) (partial), unilateral, at or above knee, complicated
DG9	Trauma	8974	Traumatic amputation of leg(s) (complete) (partial), unilateral, level not specified, without mention of complication
DG9	Trauma	8975	Traumatic amputation of leg(s) (complete) (partial), unilateral, level not specified, complicated
DG9	Trauma	8976	Traumatic amputation of leg(s) (complete) (partial), bilateral [any level]), without mention of complication
DG9	Trauma	8977	Traumatic amputation of leg(s) (complete) (partial), bilateral [any level], complicated
DG10	Genitalia and urinary disorders	257	Testicular dysfunction
DG10	Genitalia and urinary disorders	2570	Testicular hyperfunction
DG10	Genitalia and urinary disorders	2571	Postablative testicular hypofunction
DG10	Genitalia and urinary disorders	2572	Other testicular hypofunction

DG10	Genitalia and urinary disorders	2578	Other testicular dysfunction
DG10	Genitalia and urinary disorders	2579	Unspecified testicular dysfunction
DG10	Genitalia and urinary disorders	600	Hyperplasia of prostate
DG10	Genitalia and urinary disorders	6000	Hypertrophy (benign) of prostate
DG10	Genitalia and urinary disorders	60000	Hypertrophy (benign) of prostate without urinary obstruction and other lower urinary tract symptom (LUTS)
DG10	Genitalia and urinary disorders	60001	Hypertrophy (benign) of prostate with urinary obstruction and other lower urinary tract symptoms (LUTS)
DG10	Genitalia and urinary disorders	6001	Nodular prostate
DG10	Genitalia and urinary disorders	60010	Nodular prostate without urinary obstruction
DG10	Genitalia and urinary disorders	60011	Nodular prostate with urinary obstruction
DG10	Genitalia and urinary disorders	6002	Benign localized hyperplasia of prostate
DG10	Genitalia and urinary disorders	60020	Benign localized hyperplasia of prostate without urinary obstruction and other lower urinary tract symptoms (LUTS)
DG10	Genitalia and urinary disorders	60021	Benign localized hyperplasia of prostate with urinary obstruction and other lower urinary tract symptoms (LUTS)
DG10	Genitalia and urinary disorders	6003	Cyst of prostate
DG10	Genitalia and urinary disorders	6009	Hyperplasia of prostate, unspecified
DG10	Genitalia and urinary disorders	60090	Hyperplasia of prostate, unspecified, without urinary obstruction and other lower urinary symptoms (LUTS)
DG10	Genitalia and urinary disorders	60091	Hyperplasia of prostate, unspecified, with urinary obstruction and other lower urinary symptoms (LUTS)
DG10	Genitalia and urinary disorders	7883	Urinary incontinence
DG10	Genitalia and urinary disorders	78830	Urinary incontinence, unspecified
DG10	Genitalia and urinary disorders	78831	Urge incontinence
DG10	Genitalia and urinary disorders	78832	Stress incontinence, male
DG10	Genitalia and urinary disorders	78833	Mixed incontinence (male) (female)
DG10	Genitalia and urinary disorders	78834	Incontinence without sensory awareness
DG10	Genitalia and urinary disorders	78835	Post-void dribbling
DG10	Genitalia and urinary disorders	78836	Nocturnal enuresis
DG10	Genitalia and urinary disorders	78837	Continuous leakage

DG10	Genitalia and urinary disorders	78838	Overflow incontinence
DG10	Genitalia and urinary disorders	78839	Other urinary incontinence
DG10	Genitalia and urinary disorders	78891	Functional urinary incontinence
DG11	Circulation disorders	433	Occlusion and stenosis of precerebral arteries
DG11	Circulation disorders	4330	Basilar artery
DG11	Circulation disorders	43300	Occlusion and stenosis of basilar artery without mention of cerebral infarction
DG11	Circulation disorders	43301	Occlusion and stenosis of basilar artery with cerebral infarction
DG11	Circulation disorders	4331	Carotid artery
DG11	Circulation disorders	43310	Occlusion and stenosis of carotid artery without mention of cerebral infarction
DG11	Circulation disorders	43311	Occlusion and stenosis of carotid artery with cerebral infarction
DG11	Circulation disorders	4332	Vertebral artery
DG11	Circulation disorders	43320	Occlusion and stenosis of vertebral artery without mention of cerebral infarction
DG11	Circulation disorders	43321	Occlusion and stenosis of vertebral artery with cerebral infarction
DG11	Circulation disorders	4333	Multiple and bilateral
DG11	Circulation disorders	43330	Occlusion and stenosis of multiple and bilateral precerebral arteries without mention of cerebral infarction
DG11	Circulation disorders	43331	Occlusion and stenosis of multiple and bilateral precerebral arteries with cerebral infarction
DG11	Circulation disorders	4338	Other specified precerebral artery
DG11	Circulation disorders	43380	Occlusion and stenosis of other specified precerebral artery without mention of cerebral infarction
DG11	Circulation disorders	43381	Occlusion and stenosis of other specified precerebral artery with cerebral infarction
DG11	Circulation disorders	4339	Unspecified precerebral artery
DG11	Circulation disorders	43390	Occlusion and stenosis of unspecified precerebral artery without mention of cerebral infarction
DG11	Circulation disorders	43391	Occlusion and stenosis of unspecified precerebral artery with cerebral infarction
DG11	Circulation disorders	437	Other and ill-defined cerebrovascular disease
DG11	Circulation disorders	4370	Cerebral atherosclerosis
DG11	Circulation disorders	4371	Other generalized ischemic cerebrovascular disease
DG11	Circulation disorders	4372	Hypertensive encephalopathy
DG11	Circulation disorders	4373	Cerebral aneurysm, nonruptured
DG11	Circulation disorders	4374	Cerebral arteritis
DG11	Circulation disorders	4375	Moyamoya disease
DG11	Circulation disorders	4376	Nonpyogenic thrombosis of intracranial venous sinus
DG11	Circulation disorders	4377	Transient global amnesia
DG11	Circulation disorders	4378	Other ill-defined cerebrovascular disease
DG11	Circulation disorders	4379	Unspecified cerebrovascular disease
DG11	Circulation disorders	441	Aortic aneurysm and dissection

DG11	Circulation disorders	4410	Dissection of aorta
DG11	Circulation disorders	44100	Dissection of aorta, unspecified site
DG11	Circulation disorders	44101	Dissection of aorta, thoracic
DG11	Circulation disorders	44102	Dissection of aorta, abdominal
DG11	Circulation disorders	44103	Dissection of aorta, thoracoabdominal
DG11	Circulation disorders	4411	Thoracic aneurysm, ruptured
DG11	Circulation disorders	4412	Thoracic aneurysm without mention of rupture
DG11	Circulation disorders	4413	Abdominal aneurysm, ruptured
DG11	Circulation disorders	4414	Abdominal aneurysm without mention of rupture
DG11	Circulation disorders	4415	Aortic aneurysm of unspecified site, ruptured
DG11	Circulation disorders	4416	Thoracoabdominal aneurysm, ruptured
DG11	Circulation disorders	4417	Thoracoabdominal aneurysm, without mention of rupture
DG11	Circulation disorders	4419	Aortic aneurysm of unspecified site without mention of rupture
DG11	Circulation disorders	442	Other aneurysm
DG11	Circulation disorders	4420	Aneurysm of artery of upper extremity
DG11	Circulation disorders	4421	Aneurysm of renal artery
DG11	Circulation disorders	4422	Aneurysm of iliac artery
DG11	Circulation disorders	4423	Aneurysm of artery of lower extremity
DG11	Circulation disorders	4428	Of other specified artery
DG11	Circulation disorders	44281	Aneurysm of artery of neck
DG11	Circulation disorders	44282	Aneurysm of subclavian artery
DG11	Circulation disorders	44283	Aneurysm of splenic artery
DG11	Circulation disorders	44284	Aneurysm of other visceral artery
DG11	Circulation disorders	44289	Aneurysm of other specified artery
DG11	Circulation disorders	4429	Aneurysm of unspecified site
DG11	Circulation disorders	443	Other peripheral vascular disease
DG11	Circulation disorders	4430	Raynaud's syndrome
DG11	Circulation disorders	4431	Thromboangiitis obliterans [Buerger's disease]
DG11	Circulation disorders	4432	Other arterial dissection
DG11	Circulation disorders	44321	Dissection of carotid artery
DG11	Circulation disorders	44322	Dissection of iliac artery
DG11	Circulation disorders	44323	Dissection of renal artery
DG11	Circulation disorders	44324	Dissection of vertebral artery
DG11	Circulation disorders	44329	Dissection of other artery
DG11	Circulation disorders	4438	Other specified peripheral vascular diseases
DG11	Circulation disorders	44381	Peripheral angiopathy in diseases classified elsewhere
DG11	Circulation disorders	44382	Erythromelalgia
DG11	Circulation disorders	44389	Other specified peripheral vascular diseases
DG11	Circulation disorders	4439	Peripheral vascular disease, unspecified
DG11	Circulation disorders	444	Arterial embolism and thrombosis
DG11	Circulation disorders	4440	Of abdominal aorta
DG11	Circulation disorders	44401	Saddle embolus of abdominal aorta
DG11	Circulation disorders	44409	Other arterial embolism and thrombosis of abdominal aorta
DG11	Circulation disorders	4441	Embolism and thrombosis of thoracic aorta
DG11	Circulation disorders	4442	Of arteries of the extremities

DG11	Circulation disorders	44421	Arterial embolism and thrombosis of upper extremity
DG11	Circulation disorders	44422	Arterial embolism and thrombosis of lower extremity
DG11	Circulation disorders	4448	Of other specified artery
DG11	Circulation disorders	44481	Embolism and thrombosis of iliac artery
DG11	Circulation disorders	44489	Embolism and thrombosis of other specified artery
DG11	Circulation disorders	4449	Embolism and thrombosis of unspecified artery
DG11	Circulation disorders	447	Other disorders of arteries and arterioles
DG11	Circulation disorders	4470	Arteriovenous fistula, acquired
DG11	Circulation disorders	4471	Stricture of artery
DG11	Circulation disorders	4472	Rupture of artery
DG11	Circulation disorders	4473	Hyperplasia of renal artery
DG11	Circulation disorders	4474	Celiac artery compression syndrome
DG11	Circulation disorders	4475	Necrosis of artery
DG11	Circulation disorders	4476	Arteritis, unspecified
DG11	Circulation disorders	4477	Aortic ectasia
DG11	Circulation disorders	44770	Aortic ectasia, unspecified site
DG11	Circulation disorders	44771	Thoracic aortic ectasia
DG11	Circulation disorders	44772	Abdominal aortic ectasia
DG11	Circulation disorders	44773	Thoracoabdominal aortic ectasia
DG11	Circulation disorders	4478	Other specified disorders of arteries and arterioles
DG11	Circulation disorders	4479	Unspecified disorders of arteries and arterioles
DG11	Circulation disorders	4480	Hereditary hemorrhagic telangiectasia
DG11	Circulation disorders	4530	Budd-chiari syndrome
DG11	Circulation disorders	4531	Thrombophlebitis migrans
DG11	Circulation disorders	4532	Other venous embolism and thrombosis of inferior vena cava
DG11	Circulation disorders	4533	Other venous embolism and thrombosis of renal vein
DG11	Circulation disorders	4535	Chronic venous embolism and thrombosis of deep vessels of lower extremity
DG11	Circulation disorders	45350	Chronic venous embolism and thrombosis of unspecified deep vessels of lower extremity
DG11	Circulation disorders	45351	Chronic venous embolism and thrombosis of deep vessels of proximal lower extremity
DG11	Circulation disorders	45352	Chronic venous embolism and thrombosis of deep vessels of distal lower extremity
DG11	Circulation disorders	4537	Chronic venous embolism and thrombosis of other specified vessels
DG11	Circulation disorders	45371	Chronic venous embolism and thrombosis of superficial veins of upper extremity
DG11	Circulation disorders	45372	Chronic venous embolism and thrombosis of deep veins of upper extremity
DG11	Circulation disorders	45373	Chronic venous embolism and thrombosis of upper extremity, unspecified
DG11	Circulation disorders	45374	Chronic venous embolism and thrombosis of axillary veins
DG11	Circulation disorders	45375	Chronic venous embolism and thrombosis of subclavian veins
DG11	Circulation disorders	45376	Chronic venous embolism and thrombosis of internal jugular veins

DG11	Circulation disorders	45377	Chronic venous embolism and thrombosis of other thoracic veins
DG11	Circulation disorders	45379	Chronic venous embolism and thrombosis of other specified veins
DG11	Circulation disorders	45821	Hypotension of hemodialysis
DG11	Circulation disorders	4591	Postphlebotic syndrome
DG11	Circulation disorders	45910	Postphlebotic syndrome without complications
DG11	Circulation disorders	45911	Postphlebotic syndrome with ulcer
DG11	Circulation disorders	45912	Postphlebotic syndrome with inflammation
DG11	Circulation disorders	45913	Postphlebotic syndrome with ulcer and inflammation
DG11	Circulation disorders	45919	Postphlebotic syndrome with other complication
DG11	Circulation disorders	4593	Chronic venous hypertension (idiopathic)
DG11	Circulation disorders	45930	Chronic venous hypertension without complications
DG11	Circulation disorders	45931	Chronic venous hypertension with ulcer
DG11	Circulation disorders	45932	Chronic venous hypertension with inflammation
DG11	Circulation disorders	45933	Chronic venous hypertension with ulcer and inflammation
DG11	Circulation disorders	45939	Chronic venous hypertension with other complication
DG11	Circulation disorders	5571	Chronic vascular insufficiency of intestine
DG11	Circulation disorders	5579	Unspecified vascular insufficiency of intestine
DG12	Tuberculosis related alterations	137	Late effects of tuberculosis
DG12	Tuberculosis related alterations	1370	Late effects of respiratory or unspecified tuberculosis
DG12	Tuberculosis related alterations	1371	Late effects of central nervous system tuberculosis
DG12	Tuberculosis related alterations	1372	Late effects of genitourinary tuberculosis
DG12	Tuberculosis related alterations	1373	Late effects of tuberculosis of bones and joints
DG12	Tuberculosis related alterations	1374	Late effects of tuberculosis of other specified organs
DG13	Intoxication/poisoning	984	Toxic effect of lead and its compounds (including fumes)
DG13	Intoxication/poisoning	9840	Toxic effect of inorganic lead compounds
DG13	Intoxication/poisoning	9841	Toxic effect of organic lead compounds
DG13	Intoxication/poisoning	9848	Toxic effect of other lead compounds
DG13	Intoxication/poisoning	9849	Toxic effect of unspecified lead compound
DG13	Intoxication/poisoning	985	Toxic effect of other metals
DG13	Intoxication/poisoning	9850	Toxic effect of mercury and its compounds
DG13	Intoxication/poisoning	9851	Toxic effect of arsenic and its compounds
DG13	Intoxication/poisoning	9852	Toxic effect of manganese and its compounds
DG13	Intoxication/poisoning	9853	Toxic effect of beryllium and its compounds
DG13	Intoxication/poisoning	9854	Toxic effect of antimony and its compounds
DG13	Intoxication/poisoning	9855	Toxic effect of cadmium and its compounds
DG13	Intoxication/poisoning	9856	Toxic effect of chromium
DG13	Intoxication/poisoning	9858	Toxic effect of other specified metals
DG13	Intoxication/poisoning	9859	Toxic effect of unspecified metal
DG14	Psychiatric disorders	294	Persistent mental disorders due to conditions classified elsewhere

DG14	Psychiatric disorders	2940	Amnestic disorder in conditions classified elsewhere
DG14	Psychiatric disorders	2941	Dementia in conditions classified elsewhere
DG14	Psychiatric disorders	29410	Dementia in conditions classified elsewhere without behavioral disturbance
DG14	Psychiatric disorders	29411	Dementia in conditions classified elsewhere with behavioral disturbance
DG14	Psychiatric disorders	2942	Dementia, unspecified
DG14	Psychiatric disorders	29420	Dementia, unspecified, without behavioral disturbance
DG14	Psychiatric disorders	29421	Dementia, unspecified, with behavioral disturbance
DG14	Psychiatric disorders	2948	Other persistent mental disorders due to conditions classified elsewhere
DG14	Psychiatric disorders	2949	Unspecified persistent mental disorders due to conditions classified elsewhere
DG14	Psychiatric disorders	295	Schizophrenic disorders
DG14	Psychiatric disorders	2950	Simple type
DG14	Psychiatric disorders	29500	Simple type schizophrenia, unspecified
DG14	Psychiatric disorders	29501	Simple type schizophrenia, subchronic
DG14	Psychiatric disorders	29502	Simple type schizophrenia, chronic
DG14	Psychiatric disorders	29503	Simple type schizophrenia, subchronic with acute exacerbation
DG14	Psychiatric disorders	29504	Simple type schizophrenia, chronic with acute exacerbation
DG14	Psychiatric disorders	29505	Simple type schizophrenia, in remission
DG14	Psychiatric disorders	2951	Disorganized type
DG14	Psychiatric disorders	29510	Disorganized type schizophrenia, unspecified
DG14	Psychiatric disorders	29511	Disorganized type schizophrenia, subchronic
DG14	Psychiatric disorders	29512	Disorganized type schizophrenia, chronic
DG14	Psychiatric disorders	29513	Disorganized type schizophrenia, subchronic with acute exacerbation
DG14	Psychiatric disorders	29514	Disorganized type schizophrenia, chronic with acute exacerbation
DG14	Psychiatric disorders	29515	Disorganized type schizophrenia, in remission
DG14	Psychiatric disorders	2952	Catatonic type
DG14	Psychiatric disorders	29520	Catatonic type schizophrenia, unspecified
DG14	Psychiatric disorders	29521	Catatonic type schizophrenia, subchronic
DG14	Psychiatric disorders	29522	Catatonic type schizophrenia, chronic
DG14	Psychiatric disorders	29523	Catatonic type schizophrenia, subchronic with acute exacerbation
DG14	Psychiatric disorders	29524	Catatonic type schizophrenia, chronic with acute exacerbation
DG14	Psychiatric disorders	29525	Catatonic type schizophrenia, in remission
DG14	Psychiatric disorders	2953	Paranoid type
DG14	Psychiatric disorders	29530	Paranoid type schizophrenia, unspecified
DG14	Psychiatric disorders	29531	Paranoid type schizophrenia, subchronic
DG14	Psychiatric disorders	29532	Paranoid type schizophrenia, chronic
DG14	Psychiatric disorders	29533	Paranoid type schizophrenia, subchronic with acute exacerbation
DG14	Psychiatric disorders	29534	Paranoid type schizophrenia, chronic with acute exacerbation

DG14	Psychiatric disorders	29535	Paranoid type schizophrenia, in remission
DG14	Psychiatric disorders	2954	Schizophreniform disorder
DG14	Psychiatric disorders	29540	Schizophreniform disorder, unspecified
DG14	Psychiatric disorders	29541	Schizophreniform disorder, subchronic
DG14	Psychiatric disorders	29542	Schizophreniform disorder, chronic
DG14	Psychiatric disorders	29543	Schizophreniform disorder, subchronic with acute exacerbation
DG14	Psychiatric disorders	29544	Schizophreniform disorder, chronic with acute exacerbation
DG14	Psychiatric disorders	29545	Schizophreniform disorder, in remission
DG14	Psychiatric disorders	2955	Latent schizophrenia
DG14	Psychiatric disorders	29550	Latent schizophrenia, unspecified
DG14	Psychiatric disorders	29551	Latent schizophrenia, subchronic
DG14	Psychiatric disorders	29552	Latent schizophrenia, chronic
DG14	Psychiatric disorders	29553	Latent schizophrenia, subchronic with acute exacerbation
DG14	Psychiatric disorders	29554	Latent schizophrenia, chronic with acute exacerbation
DG14	Psychiatric disorders	29555	Latent schizophrenia, in remission
DG14	Psychiatric disorders	2956	Residual type
DG14	Psychiatric disorders	29560	Schizophrenic disorders, residual type, unspecified
DG14	Psychiatric disorders	29561	Schizophrenic disorders, residual type, subchronic
DG14	Psychiatric disorders	29562	Schizophrenic disorders, residual type, chronic
DG14	Psychiatric disorders	29563	Schizophrenic disorders, residual type, subchronic with acute exacerbation
DG14	Psychiatric disorders	29564	Schizophrenic disorders, residual type, chronic with acute exacerbation
DG14	Psychiatric disorders	29565	Schizophrenic disorders, residual type, in remission
DG14	Psychiatric disorders	2957	Schizoaffective disorder
DG14	Psychiatric disorders	29570	Schizoaffective disorder, unspecified
DG14	Psychiatric disorders	29571	Schizoaffective disorder, subchronic
DG14	Psychiatric disorders	29572	Schizoaffective disorder, chronic
DG14	Psychiatric disorders	29573	Schizoaffective disorder, subchronic with acute exacerbation
DG14	Psychiatric disorders	29574	Schizoaffective disorder, chronic with acute exacerbation
DG14	Psychiatric disorders	29575	Schizoaffective disorder, in remission
DG14	Psychiatric disorders	2958	Other specified types of schizophrenia
DG14	Psychiatric disorders	29580	Other specified types of schizophrenia, unspecified
DG14	Psychiatric disorders	29581	Other specified types of schizophrenia, subchronic
DG14	Psychiatric disorders	29582	Other specified types of schizophrenia, chronic
DG14	Psychiatric disorders	29583	Other specified types of schizophrenia, subchronic with acute exacerbation
DG14	Psychiatric disorders	29584	Other specified types of schizophrenia, chronic with acute exacerbation
DG14	Psychiatric disorders	29585	Other specified types of schizophrenia, in remission
DG14	Psychiatric disorders	2959	Unspecified schizophrenia
DG14	Psychiatric disorders	29590	Unspecified schizophrenia, unspecified
DG14	Psychiatric disorders	29591	Unspecified schizophrenia, subchronic
DG14	Psychiatric disorders	29592	Unspecified schizophrenia, chronic

DG14	Psychiatric disorders	29593	Unspecified schizophrenia, subchronic with acute exacerbation
DG14	Psychiatric disorders	29594	Unspecified schizophrenia, chronic with acute exacerbation
DG14	Psychiatric disorders	29595	Unspecified schizophrenia, in remission
DG14	Psychiatric disorders	296	Episodic mood disorders
DG14	Psychiatric disorders	2960	Bipolar I disorder, single manic episode
DG14	Psychiatric disorders	29600	Bipolar I disorder, single manic episode, unspecified
DG14	Psychiatric disorders	29601	Bipolar I disorder, single manic episode, mild
DG14	Psychiatric disorders	29602	Bipolar I disorder, single manic episode, moderate
DG14	Psychiatric disorders	29603	Bipolar I disorder, single manic episode, severe, without mention of psychotic behavior
DG14	Psychiatric disorders	29604	Bipolar I disorder, single manic episode, severe, specified as with psychotic behavior
DG14	Psychiatric disorders	29605	Bipolar I disorder, single manic episode, in partial or unspecified remission
DG14	Psychiatric disorders	29606	Bipolar I disorder, single manic episode, in full remission
DG14	Psychiatric disorders	2961	Manic disorder, recurrent episode
DG14	Psychiatric disorders	29610	Manic affective disorder, recurrent episode, unspecified
DG14	Psychiatric disorders	29611	Manic affective disorder, recurrent episode, mild
DG14	Psychiatric disorders	29612	Manic affective disorder, recurrent episode, moderate
DG14	Psychiatric disorders	29613	Manic affective disorder, recurrent episode, severe, without mention of psychotic behavior
DG14	Psychiatric disorders	29614	Manic affective disorder, recurrent episode, severe, specified as with psychotic behavior
DG14	Psychiatric disorders	29615	Manic affective disorder, recurrent episode, in partial or unspecified remission
DG14	Psychiatric disorders	29616	Manic affective disorder, recurrent episode, in full remission
DG14	Psychiatric disorders	2962	Major depressive disorder, single episode
DG14	Psychiatric disorders	29620	Major depressive affective disorder, single episode, unspecified
DG14	Psychiatric disorders	29621	Major depressive affective disorder, single episode, mild
DG14	Psychiatric disorders	29622	Major depressive affective disorder, single episode, moderate
DG14	Psychiatric disorders	29623	Major depressive affective disorder, single episode, severe, without mention of psychotic behavior
DG14	Psychiatric disorders	29624	Major depressive affective disorder, single episode, severe, specified as with psychotic behavior
DG14	Psychiatric disorders	29625	Major depressive affective disorder, single episode, in partial or unspecified remission
DG14	Psychiatric disorders	29626	Major depressive affective disorder, single episode, in full remission
DG14	Psychiatric disorders	2963	Major depressive disorder, recurrent episode
DG14	Psychiatric disorders	29630	Major depressive affective disorder, recurrent episode, unspecified
DG14	Psychiatric disorders	29631	Major depressive affective disorder, recurrent episode, mild
DG14	Psychiatric disorders	29632	Major depressive affective disorder, recurrent episode, moderate
DG14	Psychiatric disorders	29633	Major depressive affective disorder, recurrent episode, severe, without mention of psychotic behavior

DG14	Psychiatric disorders	29634	Major depressive affective disorder, recurrent episode, severe, specified as with psychotic behavior
DG14	Psychiatric disorders	29635	Major depressive affective disorder, recurrent episode, in partial or unspecified remission
DG14	Psychiatric disorders	29636	Major depressive affective disorder, recurrent episode, in full remission
DG14	Psychiatric disorders	2964	Bipolar I disorder, most recent episode (or current) manic
DG14	Psychiatric disorders	29640	Bipolar I disorder, most recent episode (or current) manic, unspecified
DG14	Psychiatric disorders	29641	Bipolar I disorder, most recent episode (or current) manic, mild
DG14	Psychiatric disorders	29642	Bipolar I disorder, most recent episode (or current) manic, moderate
DG14	Psychiatric disorders	29643	Bipolar I disorder, most recent episode (or current) manic, severe, without mention of psychotic behavior
DG14	Psychiatric disorders	29644	Bipolar I disorder, most recent episode (or current) manic, severe, specified as with psychotic behavior
DG14	Psychiatric disorders	29645	Bipolar I disorder, most recent episode (or current) manic, in partial or unspecified remission
DG14	Psychiatric disorders	29646	Bipolar I disorder, most recent episode (or current) manic, in full remission
DG14	Psychiatric disorders	2965	Bipolar I disorder, most recent episode (or current) depressed
DG14	Psychiatric disorders	29650	Bipolar I disorder, most recent episode (or current) depressed, unspecified
DG14	Psychiatric disorders	29651	Bipolar I disorder, most recent episode (or current) depressed, mild
DG14	Psychiatric disorders	29652	Bipolar I disorder, most recent episode (or current) depressed, moderate
DG14	Psychiatric disorders	29653	Bipolar I disorder, most recent episode (or current) depressed, severe, without mention of psychotic behavior
DG14	Psychiatric disorders	29654	Bipolar I disorder, most recent episode (or current) depressed, severe, specified as with psychotic behavior
DG14	Psychiatric disorders	29655	Bipolar I disorder, most recent episode (or current) depressed, in partial or unspecified remission
DG14	Psychiatric disorders	29656	Bipolar I disorder, most recent episode (or current) depressed, in full remission
DG14	Psychiatric disorders	2966	Bipolar I disorder, most recent episode (or current) mixed
DG14	Psychiatric disorders	29660	Bipolar I disorder, most recent episode (or current) mixed, unspecified
DG14	Psychiatric disorders	29661	Bipolar I disorder, most recent episode (or current) mixed, mild
DG14	Psychiatric disorders	29662	Bipolar I disorder, most recent episode (or current) mixed, moderate
DG14	Psychiatric disorders	29663	Bipolar I disorder, most recent episode (or current) mixed, severe, without mention of psychotic behavior
DG14	Psychiatric disorders	29664	Bipolar I disorder, most recent episode (or current) mixed, severe, specified as with psychotic behavior
DG14	Psychiatric disorders	29665	Bipolar I disorder, most recent episode (or current) mixed, in partial or unspecified remission

DG14	Psychiatric disorders	29666	Bipolar I disorder, most recent episode (or current) mixed, in full remission
DG14	Psychiatric disorders	2967	Bipolar I disorder, most recent episode (or current) unspecified
DG14	Psychiatric disorders	2968	Other and unspecified bipolar disorders
DG14	Psychiatric disorders	29680	Bipolar disorder, unspecified
DG14	Psychiatric disorders	29681	Atypical manic disorder
DG14	Psychiatric disorders	29682	Atypical depressive disorder
DG14	Psychiatric disorders	29689	Other bipolar disorders
DG14	Psychiatric disorders	2969	Other and unspecified episodic mood disorder
DG14	Psychiatric disorders	29690	Unspecified episodic mood disorder
DG14	Psychiatric disorders	29699	Other specified episodic mood disorder
DG14	Psychiatric disorders	2980	Depressive type psychosis
DG14	Psychiatric disorders	2981	Excitative type psychosis
DG14	Psychiatric disorders	2984	Psychogenic paranoid psychosis
DG14	Psychiatric disorders	2988	Other and unspecified reactive psychosis
DG14	Psychiatric disorders	2989	Unspecified psychosis
DG14	Psychiatric disorders	300	Anxiety, dissociative and somatoform disorders
DG14	Psychiatric disorders	3000	Anxiety states
DG14	Psychiatric disorders	30000	Anxiety state, unspecified
DG14	Psychiatric disorders	30001	Panic disorder without agoraphobia
DG14	Psychiatric disorders	30002	Generalized anxiety disorder
DG14	Psychiatric disorders	30009	Other anxiety states
DG14	Psychiatric disorders	3001	Dissociative, conversion and factitious disorders
DG14	Psychiatric disorders	30010	Hysteria, unspecified
DG14	Psychiatric disorders	30011	Conversion disorder
DG14	Psychiatric disorders	30012	Dissociative amnesia
DG14	Psychiatric disorders	30013	Dissociative fugue
DG14	Psychiatric disorders	30014	Dissociative identity disorder
DG14	Psychiatric disorders	30015	Dissociative disorder or reaction, unspecified
DG14	Psychiatric disorders	30016	Factitious disorder with predominantly psychological signs and symptoms
DG14	Psychiatric disorders	30019	Other and unspecified factitious illness
DG14	Psychiatric disorders	3002	Phobic disorders
DG14	Psychiatric disorders	30020	Phobia, unspecified
DG14	Psychiatric disorders	30021	Agoraphobia with panic disorder
DG14	Psychiatric disorders	30022	Agoraphobia without mention of panic attacks
DG14	Psychiatric disorders	30023	Social phobia
DG14	Psychiatric disorders	30029	Other isolated or specific phobias
DG14	Psychiatric disorders	3003	Obsessive-compulsive disorders
DG14	Psychiatric disorders	3004	Dysthymic disorder
DG14	Psychiatric disorders	3005	Neurasthenia
DG14	Psychiatric disorders	3006	Depersonalization disorder
DG14	Psychiatric disorders	3007	Hypochondriasis
DG14	Psychiatric disorders	3008	Somatoform disorders
DG14	Psychiatric disorders	30081	Somatization disorder
DG14	Psychiatric disorders	30082	Undifferentiated somatoform disorder

DG14	Psychiatric disorders	30089	Other somatoform disorders
DG14	Psychiatric disorders	3009	Unspecified nonpsychotic mental disorder
DG14	Psychiatric disorders	301	Personality disorders
DG14	Psychiatric disorders	3010	Paranoid personality disorder
DG14	Psychiatric disorders	3011	Affective personality disorder
DG14	Psychiatric disorders	30110	Affective personality disorder, unspecified
DG14	Psychiatric disorders	30111	Chronic hypomanic personality disorder
DG14	Psychiatric disorders	30112	Chronic depressive personality disorder
DG14	Psychiatric disorders	30113	Cyclothymic disorder
DG14	Psychiatric disorders	3012	Schizoid personality disorder
DG14	Psychiatric disorders	30120	Schizoid personality disorder, unspecified
DG14	Psychiatric disorders	30121	Introverted personality
DG14	Psychiatric disorders	30122	Schizotypal personality disorder
DG14	Psychiatric disorders	3013	Explosive personality disorder
DG14	Psychiatric disorders	3014	Obsessive-compulsive personality disorder
DG14	Psychiatric disorders	3015	Histrionic personality disorder
DG14	Psychiatric disorders	30150	Histrionic personality disorder, unspecified
DG14	Psychiatric disorders	30151	Chronic factitious illness with physical symptoms
DG14	Psychiatric disorders	30159	Other histrionic personality disorder
DG14	Psychiatric disorders	3016	Dependent personality disorder
DG14	Psychiatric disorders	3017	Antisocial personality disorder
DG14	Psychiatric disorders	3018	Other personality disorders
DG14	Psychiatric disorders	30181	Narcissistic personality disorder
DG14	Psychiatric disorders	30182	Avoidant personality disorder
DG14	Psychiatric disorders	30183	Borderline personality disorder
DG14	Psychiatric disorders	30184	Passive-aggressive personality
DG14	Psychiatric disorders	30189	Other personality disorders
DG14	Psychiatric disorders	3019	Unspecified personality disorder
DG14	Psychiatric disorders	306	Physiological malfunction arising from mental factors
DG14	Psychiatric disorders	3060	Musculoskeletal malfunction arising from mental factors
DG14	Psychiatric disorders	3061	Respiratory malfunction arising from mental factors
DG14	Psychiatric disorders	3062	Cardiovascular malfunction arising from mental factors
DG14	Psychiatric disorders	3063	Skin disorder arising from mental factors
DG14	Psychiatric disorders	3064	Gastrointestinal malfunction arising from mental factors
DG14	Psychiatric disorders	3065	Genitourinary
DG14	Psychiatric disorders	30650	Psychogenic genitourinary malfunction, unspecified
DG14	Psychiatric disorders	30651	Psychogenic vaginismus
DG14	Psychiatric disorders	30652	Psychogenic dysmenorrhea
DG14	Psychiatric disorders	30653	Psychogenic dysuria
DG14	Psychiatric disorders	30659	Other genitourinary malfunction arising from mental factors
DG14	Psychiatric disorders	3066	Endocrine disorder arising from mental factors
DG14	Psychiatric disorders	3067	Disorder of organs of special sense arising from mental factors
DG14	Psychiatric disorders	3068	Other specified psychophysiological malfunction
DG14	Psychiatric disorders	3069	Unspecified psychophysiological malfunction
DG14	Psychiatric disorders	308	Acute reaction to stress

DG14	Psychiatric disorders	3080	Predominant disturbance of emotions
DG14	Psychiatric disorders	3081	Predominant disturbance of consciousness
DG14	Psychiatric disorders	3082	Predominant psychomotor disturbance
DG14	Psychiatric disorders	3083	Other acute reactions to stress
DG14	Psychiatric disorders	3084	Mixed disorders as reaction to stress
DG14	Psychiatric disorders	3089	Unspecified acute reaction to stress
DG14	Psychiatric disorders	309	Adjustment reaction
DG14	Psychiatric disorders	3090	Adjustment disorder with depressed mood
DG14	Psychiatric disorders	3091	Prolonged depressive reaction
DG14	Psychiatric disorders	3092	With predominant disturbance of other emotions
DG14	Psychiatric disorders	30921	Separation anxiety disorder
DG14	Psychiatric disorders	30922	Emancipation disorder of adolescence and early adult life
DG14	Psychiatric disorders	30923	Specific academic or work inhibition
DG14	Psychiatric disorders	30924	Adjustment disorder with anxiety
DG14	Psychiatric disorders	30928	Adjustment disorder with mixed anxiety and depressed mood
DG14	Psychiatric disorders	30929	Other adjustment reactions with predominant disturbance of other emotions
DG14	Psychiatric disorders	3093	Adjustment disorder with disturbance of conduct
DG14	Psychiatric disorders	3094	Adjustment disorder with mixed disturbance of emotions and conduct
DG14	Psychiatric disorders	3098	Other specified adjustment reactions
DG14	Psychiatric disorders	30981	Posttraumatic stress disorder
DG14	Psychiatric disorders	30982	Adjustment reaction with physical symptoms
DG14	Psychiatric disorders	30983	Adjustment reaction with withdrawal
DG14	Psychiatric disorders	30989	Other specified adjustment reactions
DG14	Psychiatric disorders	3099	Unspecified adjustment reaction
DG14	Psychiatric disorders	310	Specific nonpsychotic mental disorders due to brain damage
DG14	Psychiatric disorders	3100	Frontal lobe syndrome
DG14	Psychiatric disorders	3101	Personality change due to conditions classified elsewhere
DG14	Psychiatric disorders	3102	Postconcussion syndrome
DG14	Psychiatric disorders	3108	Other specified nonpsychotic mental disorders following organic brain damage
DG14	Psychiatric disorders	31081	Pseudobulbar affect
DG14	Psychiatric disorders	31089	Other specified nonpsychotic mental disorders following organic brain damage
DG14	Psychiatric disorders	3109	Unspecified nonpsychotic mental disorder following organic brain damage
DG14	Psychiatric disorders	311	Depressive disorder, not elsewhere classified
DG14	Psychiatric disorders	312	Disturbance of conduct, not elsewhere classified
DG14	Psychiatric disorders	3120	Undersocialized conduct disorder, aggressive type
DG14	Psychiatric disorders	31200	Undersocialized conduct disorder, aggressive type, unspecified
DG14	Psychiatric disorders	31201	Undersocialized conduct disorder, aggressive type, mild
DG14	Psychiatric disorders	31202	Undersocialized conduct disorder, aggressive type, moderate
DG14	Psychiatric disorders	31203	Undersocialized conduct disorder, aggressive type, severe
DG14	Psychiatric disorders	3121	Undersocialized conduct disorder, unaggressive type

DG14	Psychiatric disorders	31210	Undersocialized conduct disorder, unaggressive type, unspecified
DG14	Psychiatric disorders	31211	Undersocialized conduct disorder, unaggressive type, mild
DG14	Psychiatric disorders	31212	Undersocialized conduct disorder, unaggressive type, moderate
DG14	Psychiatric disorders	31213	Undersocialized conduct disorder, unaggressive type, severe
DG14	Psychiatric disorders	3122	Socialized conduct disorder
DG14	Psychiatric disorders	31220	Socialized conduct disorder, unspecified
DG14	Psychiatric disorders	31221	Socialized conduct disorder, mild
DG14	Psychiatric disorders	31222	Socialized conduct disorder, moderate
DG14	Psychiatric disorders	31223	Socialized conduct disorder, severe
DG14	Psychiatric disorders	3123	Disorders of impulse control, not elsewhere classified
DG14	Psychiatric disorders	31230	Impulse control disorder, unspecified
DG14	Psychiatric disorders	31231	Pathological gambling
DG14	Psychiatric disorders	31232	Kleptomania
DG14	Psychiatric disorders	31233	Pyromania
DG14	Psychiatric disorders	31234	Intermittent explosive disorder
DG14	Psychiatric disorders	31235	Isolated explosive disorder
DG14	Psychiatric disorders	31239	Other disorders of impulse control
DG14	Psychiatric disorders	3124	Mixed disturbance of conduct and emotions
DG14	Psychiatric disorders	3128	Other specified disturbances of conduct, not elsewhere classified
DG14	Psychiatric disorders	31281	Conduct disorder, childhood onset type
DG14	Psychiatric disorders	31282	Conduct disorder, adolescent onset type
DG14	Psychiatric disorders	31289	Other conduct disorder
DG14	Psychiatric disorders	3129	Unspecified disturbance of conduct
DG14	Psychiatric disorders	313	Disturbance of emotions specific to childhood and adolescence
DG14	Psychiatric disorders	3130	Overanxious disorder specific to childhood and adolescence
DG14	Psychiatric disorders	3131	Misery and unhappiness disorder specific to childhood and adolescence
DG14	Psychiatric disorders	3132	Sensitivity, shyness, and social withdrawal disorder
DG14	Psychiatric disorders	31321	Shyness disorder of childhood
DG14	Psychiatric disorders	31322	Introverted disorder of childhood
DG14	Psychiatric disorders	31323	Selective mutism
DG14	Psychiatric disorders	3133	Relationship problems specific to childhood and adolescence
DG14	Psychiatric disorders	3138	Other or mixed emotional disturbances of childhood or adolescence
DG14	Psychiatric disorders	31381	Oppositional defiant disorder
DG14	Psychiatric disorders	31382	Identity disorder of childhood or adolescence
DG14	Psychiatric disorders	31383	Academic underachievement disorder of childhood or adolescence
DG14	Psychiatric disorders	31389	Other emotional disturbances of childhood or adolescence
DG14	Psychiatric disorders	3139	Unspecified emotional disturbance of childhood or adolescence
DG14	Psychiatric disorders	316	Psychic factors associated with diseases classified elsewhere
DG15	Dependence	2910	Alcohol withdrawal delirium

DG15	Dependence	2911	Alcohol-induced persisting amnestic disorder
DG15	Dependence	2912	Alcohol-induced persisting dementia
DG15	Dependence	2913	Alcohol-induced psychotic disorder with hallucinations
DG15	Dependence	2915	Alcohol-induced psychotic disorder with delusions
DG15	Dependence	2918	Other specified alcohol-induced mental disorders
DG15	Dependence	29181	Alcohol withdrawal
DG15	Dependence	29182	Alcohol induced sleep disorders
DG15	Dependence	29189	Other alcohol-induced mental disorders
DG15	Dependence	2919	Unspecified alcohol-induced mental disorders
DG15	Dependence	2920	Drug withdrawal
DG15	Dependence	29282	Drug-induced persisting dementia
DG15	Dependence	29283	Drug-induced persisting amnestic disorder
DG15	Dependence	29284	Drug-induced mood disorder
DG15	Dependence	29285	Drug induced sleep disorders
DG15	Dependence	29289	Other specified drug-induced mental disorders
DG15	Dependence	2929	Unspecified drug-induced mental disorder
DG15	Dependence	303	Alcohol dependence syndrome
DG15	Dependence	3030	Acute alcoholic intoxication
DG15	Dependence	30300	Acute alcoholic intoxication in alcoholism, unspecified
DG15	Dependence	30301	Acute alcoholic intoxication in alcoholism, continuous
DG15	Dependence	30302	Acute alcoholic intoxication in alcoholism, episodic
DG15	Dependence	30303	Acute alcoholic intoxication in alcoholism, in remission
DG15	Dependence	3039	Other and unspecified alcohol dependence
DG15	Dependence	30390	Other and unspecified alcohol dependence, unspecified
DG15	Dependence	30391	Other and unspecified alcohol dependence, continuous
DG15	Dependence	30392	Other and unspecified alcohol dependence, episodic
DG15	Dependence	30393	Other and unspecified alcohol dependence, in remission
DG15	Dependence	304	Drug dependence
DG15	Dependence	3040	Opioid type dependence
DG15	Dependence	30400	Opioid type dependence, unspecified
DG15	Dependence	30401	Opioid type dependence, continuous
DG15	Dependence	30402	Opioid type dependence, episodic
DG15	Dependence	30403	Opioid type dependence, in remission
DG15	Dependence	3041	Sedative, hypnotic or anxiolytic dependence
DG15	Dependence	30410	Sedative, hypnotic or anxiolytic dependence, unspecified
DG15	Dependence	30411	Sedative, hypnotic or anxiolytic dependence, continuous
DG15	Dependence	30412	Sedative, hypnotic or anxiolytic dependence, episodic
DG15	Dependence	30413	Sedative, hypnotic or anxiolytic dependence, in remission
DG15	Dependence	3042	Cocaine dependence
DG15	Dependence	30420	Cocaine dependence, unspecified
DG15	Dependence	30421	Cocaine dependence, continuous
DG15	Dependence	30422	Cocaine dependence, episodic
DG15	Dependence	30423	Cocaine dependence, in remission
DG15	Dependence	3043	Cannabis dependence
DG15	Dependence	30430	Cannabis dependence, unspecified
DG15	Dependence	30431	Cannabis dependence, continuous

DG15	Dependence	30432	Cannabis dependence, episodic
DG15	Dependence	30433	Cannabis dependence, in remission
DG15	Dependence	3044	Amphetamine and other psychostimulant dependence
DG15	Dependence	30440	Amphetamine and other psychostimulant dependence, unspecified
DG15	Dependence	30441	Amphetamine and other psychostimulant dependence, continuous
DG15	Dependence	30442	Amphetamine and other psychostimulant dependence, episodic
DG15	Dependence	30443	Amphetamine and other psychostimulant dependence, in remission
DG15	Dependence	3045	Hallucinogen dependence
DG15	Dependence	30450	Hallucinogen dependence, unspecified
DG15	Dependence	30451	Hallucinogen dependence, continuous
DG15	Dependence	30452	Hallucinogen dependence, episodic
DG15	Dependence	30453	Hallucinogen dependence, in remission
DG15	Dependence	3046	Other specified drug dependence
DG15	Dependence	30460	Other specified drug dependence, unspecified
DG15	Dependence	30461	Other specified drug dependence, continuous
DG15	Dependence	30462	Other specified drug dependence, episodic
DG15	Dependence	30463	Other specified drug dependence, in remission
DG15	Dependence	3047	Combinations of opioid type drug with any other
DG15	Dependence	30470	Combinations of opioid type drug with any other drug dependence, unspecified
DG15	Dependence	30471	Combinations of opioid type drug with any other drug dependence, continuous
DG15	Dependence	30472	Combinations of opioid type drug with any other drug dependence, episodic
DG15	Dependence	30473	Combinations of opioid type drug with any other drug dependence, in remission
DG15	Dependence	3048	Combinations of drug dependence excluding opioid type drug
DG15	Dependence	30480	Combinations of drug dependence excluding opioid type drug, unspecified
DG15	Dependence	30481	Combinations of drug dependence excluding opioid type drug, continuous
DG15	Dependence	30482	Combinations of drug dependence excluding opioid type drug, episodic
DG15	Dependence	30483	Combinations of drug dependence excluding opioid type drug, in remission
DG15	Dependence	3049	Unspecified drug dependence
DG15	Dependence	30490	Unspecified drug dependence, unspecified
DG15	Dependence	30491	Unspecified drug dependence, continuous
DG15	Dependence	30492	Unspecified drug dependence, episodic
DG15	Dependence	30493	Unspecified drug dependence, in remission
DG15	Dependence	305	Nondependent abuse of drugs
DG15	Dependence	3050	Alcohol abuse
DG15	Dependence	30500	Alcohol abuse, unspecified

DG15	Dependence	30501	Alcohol abuse, continuous
DG15	Dependence	30502	Alcohol abuse, episodic
DG15	Dependence	30503	Alcohol abuse, in remission
DG15	Dependence	3051	Tobacco use disorder
DG15	Dependence	3052	Cannabis abuse
DG15	Dependence	30520	Cannabis abuse, unspecified
DG15	Dependence	30521	Cannabis abuse, continuous
DG15	Dependence	30522	Cannabis abuse, episodic
DG15	Dependence	30523	Cannabis abuse, in remission
DG15	Dependence	3053	Hallucinogen abuse
DG15	Dependence	30530	Hallucinogen abuse, unspecified
DG15	Dependence	30531	Hallucinogen abuse, continuous
DG15	Dependence	30532	Hallucinogen abuse, episodic
DG15	Dependence	30533	Hallucinogen abuse, in remission
DG15	Dependence	3054	Sedative, hypnotic or anxiolytic abuse
DG15	Dependence	30540	Sedative, hypnotic or anxiolytic abuse, unspecified
DG15	Dependence	30541	Sedative, hypnotic or anxiolytic abuse, continuous
DG15	Dependence	30542	Sedative, hypnotic or anxiolytic abuse, episodic
DG15	Dependence	30543	Sedative, hypnotic or anxiolytic abuse, in remission
DG15	Dependence	3055	Opioid abuse
DG15	Dependence	30550	Opioid abuse, unspecified
DG15	Dependence	30551	Opioid abuse, continuous
DG15	Dependence	30552	Opioid abuse, episodic
DG15	Dependence	30553	Opioid abuse, in remission
DG15	Dependence	3056	Cocaine abuse
DG15	Dependence	30560	Cocaine abuse, unspecified
DG15	Dependence	30561	Cocaine abuse, continuous
DG15	Dependence	30562	Cocaine abuse, episodic
DG15	Dependence	30563	Cocaine abuse, in remission
DG15	Dependence	3057	Amphetamine or related acting sympathomimetic abuse
DG15	Dependence	30570	Amphetamine or related acting sympathomimetic abuse, unspecified
DG15	Dependence	30571	Amphetamine or related acting sympathomimetic abuse, continuous
DG15	Dependence	30572	Amphetamine or related acting sympathomimetic abuse, episodic
DG15	Dependence	30573	Amphetamine or related acting sympathomimetic abuse, in remission
DG15	Dependence	3058	Antidepressant type abuse
DG15	Dependence	30580	Antidepressant type abuse, unspecified
DG15	Dependence	30581	Antidepressant type abuse, continuous
DG15	Dependence	30582	Antidepressant type abuse, episodic
DG15	Dependence	30583	Antidepressant type abuse, in remission
DG15	Dependence	3059	Other, mixed, or unspecified drug abuse
DG15	Dependence	30590	Other, mixed, or unspecified drug abuse, unspecified
DG15	Dependence	30591	Other, mixed, or unspecified drug abuse, continuous
DG15	Dependence	30592	Other, mixed, or unspecified drug abuse, episodic

DG15	Dependence	30593	Other, mixed, or unspecified drug abuse, in remission
DG16	Sleep disorders	347	Cataplexy and narcolepsy
DG16	Sleep disorders	3470	Narcolepsy
DG16	Sleep disorders	34700	Narcolepsy, without cataplexy
DG16	Sleep disorders	34701	Narcolepsy, with cataplexy
DG16	Sleep disorders	3471	Narcolepsy in conditions classified elsewhere
DG16	Sleep disorders	34710	Narcolepsy in conditions classified elsewhere, without cataplexy
DG16	Sleep disorders	34711	Narcolepsy in conditions classified elsewhere, with cataplexy
DG17	Central nervous diseases	3330	Other degenerative diseases of the basal ganglia
DG17	Central nervous diseases	3331	Essential and other specified forms of tremor
DG17	Central nervous diseases	3332	Myoclonus
DG17	Central nervous diseases	3333	Tics of organic origin
DG17	Central nervous diseases	3334	Huntington's chorea
DG17	Central nervous diseases	3335	Other choreas
DG17	Central nervous diseases	3336	Genetic torsion dystonia
DG17	Central nervous diseases	3337	Acquired torsion dystonia
DG17	Central nervous diseases	33371	Athetoid cerebral palsy
DG17	Central nervous diseases	33379	Other acquired torsion dystonia
DG17	Central nervous diseases	33381	Blepharospasm
DG17	Central nervous diseases	33382	Orofacial dyskinesia
DG17	Central nervous diseases	33383	Spasmodic torticollis
DG17	Central nervous diseases	33384	Organic writers' cramp
DG17	Central nervous diseases	33389	Other fragments of torsion dystonia
DG17	Central nervous diseases	3339	Other and unspecified extrapyramidal diseases and abnormal movement disorders
DG17	Central nervous diseases	33390	Unspecified extrapyramidal disease and abnormal movement disorder
DG17	Central nervous diseases	33391	Stiff-man syndrome
DG17	Central nervous diseases	33392	Neuroleptic malignant syndrome
DG17	Central nervous diseases	33393	Benign shuddering attacks

DG17	Central nervous diseases	33394	Restless legs syndrome (RLS)
DG17	Central nervous diseases	33399	Other extrapyramidal diseases and abnormal movement disorders
DG17	Central nervous diseases	334	Spinocerebellar disease
DG17	Central nervous diseases	3340	Friedreich's ataxia
DG17	Central nervous diseases	3341	Hereditary spastic paraplegia
DG17	Central nervous diseases	3342	Primary cerebellar degeneration
DG17	Central nervous diseases	3343	Other cerebellar ataxia
DG17	Central nervous diseases	3344	Cerebellar ataxia in diseases classified elsewhere
DG17	Central nervous diseases	3348	Other spinocerebellar diseases
DG17	Central nervous diseases	3349	Spinocerebellar disease, unspecified
DG17	Central nervous diseases	33900	Cluster headache syndrome, unspecified
DG17	Central nervous diseases	33901	Episodic cluster headache
DG17	Central nervous diseases	33902	Chronic cluster headache
DG17	Central nervous diseases	33903	Episodic paroxysmal hemicrania
DG17	Central nervous diseases	33904	Chronic paroxysmal hemicrania
DG17	Central nervous diseases	33911	Episodic tension type headache
DG17	Central nervous diseases	33912	Chronic tension type headache
DG17	Central nervous diseases	33922	Chronic post-traumatic headache
DG17	Central nervous diseases	33941	Hemicrania continua
DG17	Central nervous diseases	33942	New daily persistent headache
DG17	Central nervous diseases	345	Epilepsy and recurrent seizures
DG17	Central nervous diseases	3450	Generalized nonconvulsive epilepsy
DG17	Central nervous diseases	34500	Generalized nonconvulsive epilepsy, without mention of intractable epilepsy
DG17	Central nervous diseases	34501	Generalized nonconvulsive epilepsy, with intractable epilepsy
DG17	Central nervous diseases	3451	Generalized convulsive epilepsy

DG17	Central nervous diseases	34510	Generalized convulsive epilepsy, without mention of intractable epilepsy
DG17	Central nervous diseases	34511	Generalized convulsive epilepsy, with intractable epilepsy
DG17	Central nervous diseases	3452	Petit mal status
DG17	Central nervous diseases	3453	Grand mal status
DG17	Central nervous diseases	3454	Localization-related (focal) (partial) epilepsy and epileptic syndromes with complex partial seizures
DG17	Central nervous diseases	34540	Localization-related (focal) (partial) epilepsy and epileptic syndromes with complex partial seizures, without mention of intractable epilepsy
DG17	Central nervous diseases	34541	Localization-related (focal) (partial) epilepsy and epileptic syndromes with complex partial seizures, with intractable epilepsy
DG17	Central nervous diseases	3455	Localization-related (focal) (partial) epilepsy and epileptic syndromes with simple partial seizures
DG17	Central nervous diseases	34550	Localization-related (focal) (partial) epilepsy and epileptic syndromes with simple partial seizures, without mention of intractable epilepsy
DG17	Central nervous diseases	34551	Localization-related (focal) (partial) epilepsy and epileptic syndromes with simple partial seizures, with intractable epilepsy
DG17	Central nervous diseases	3456	Infantile spasms
DG17	Central nervous diseases	34560	Infantile spasms, without mention of intractable epilepsy
DG17	Central nervous diseases	34561	Infantile spasms, with intractable epilepsy
DG17	Central nervous diseases	3457	Epilepsia partialis continua
DG17	Central nervous diseases	34570	Epilepsia partialis continua, without mention of intractable epilepsy
DG17	Central nervous diseases	34571	Epilepsia partialis continua, with intractable epilepsy
DG17	Central nervous diseases	3458	Other forms of epilepsy and recurrent seizures
DG17	Central nervous diseases	34580	Other forms of epilepsy and recurrent seizures, without mention of intractable epilepsy
DG17	Central nervous diseases	34581	Other forms of epilepsy and recurrent seizures, with intractable epilepsy
DG17	Central nervous diseases	3459	Epilepsy, unspecified
DG17	Central nervous diseases	34590	Epilepsy, unspecified, without mention of intractable epilepsy
DG17	Central nervous diseases	34591	Epilepsy, unspecified, with intractable epilepsy
DG17	Central nervous diseases	3480	Cerebral cysts

DG17	Central nervous diseases	3481	Anoxic brain damage
DG17	Central nervous diseases	3482	Benign intracranial hypertension
DG17	Central nervous diseases	3483	Encephalopathy, not elsewhere classified
DG17	Central nervous diseases	34830	Encephalopathy, unspecified
DG17	Central nervous diseases	34831	Metabolic encephalopathy
DG17	Central nervous diseases	34839	Other encephalopathy
DG17	Central nervous diseases	3484	Compression of brain
DG17	Central nervous diseases	3485	Cerebral edema
DG17	Central nervous diseases	3488	Other conditions of brain
DG17	Central nervous diseases	34881	Temporal sclerosis
DG17	Central nervous diseases	34882	Brain death
DG17	Central nervous diseases	34889	Other conditions of brain
DG17	Central nervous diseases	3489	Unspecified condition of brain
DG17	Central nervous diseases	353	Nerve root and plexus disorders
DG17	Central nervous diseases	3530	Brachial plexus lesions
DG17	Central nervous diseases	3531	Lumbosacral plexus lesions
DG17	Central nervous diseases	3532	Cervical root lesions, not elsewhere classified
DG17	Central nervous diseases	3533	Thoracic root lesions, not elsewhere classified
DG17	Central nervous diseases	3534	Lumbosacral root lesions, not elsewhere classified
DG17	Central nervous diseases	3535	Neuralgic amyotrophy
DG17	Central nervous diseases	3536	Phantom limb (syndrome)
DG17	Central nervous diseases	3538	Other nerve root and plexus disorders
DG17	Central nervous diseases	3539	Unspecified nerve root and plexus disorder
DG17	Central nervous diseases	355	Mononeuritis of lower limb
DG17	Central nervous diseases	3550	Lesion of sciatic nerve

DG17	Central nervous diseases	3551	Meralgia paresthetica
DG17	Central nervous diseases	3552	Other lesion of femoral nerve
DG17	Central nervous diseases	3553	Lesion of lateral popliteal nerve
DG17	Central nervous diseases	3554	Lesion of medial popliteal nerve
DG17	Central nervous diseases	3555	Tarsal tunnel syndrome
DG17	Central nervous diseases	3556	Lesion of plantar nerve
DG17	Central nervous diseases	3557	Other mononeuritis of lower limb
DG17	Central nervous diseases	35571	Causalgia of lower limb
DG17	Central nervous diseases	35579	Other mononeuritis of lower limb
DG17	Central nervous diseases	3558	Mononeuritis of lower limb, unspecified
DG17	Central nervous diseases	3559	Mononeuritis of unspecified site
DG17	Central nervous diseases	356	Hereditary and idiopathic peripheral neuropathy
DG17	Central nervous diseases	3560	Hereditary peripheral neuropathy
DG17	Central nervous diseases	3561	Peroneal muscular atrophy
DG17	Central nervous diseases	3562	Hereditary sensory neuropathy
DG17	Central nervous diseases	3563	Refsum's disease
DG17	Central nervous diseases	3564	Idiopathic progressive polyneuropathy
DG17	Central nervous diseases	3568	Other specified idiopathic peripheral neuropathy
DG17	Central nervous diseases	3569	Unspecified hereditary and idiopathic peripheral neuropathy
DG17	Central nervous diseases	3590	Congenital hereditary muscular dystrophy
DG17	Central nervous diseases	3591	Hereditary progressive muscular dystrophy
DG17	Central nervous diseases	3592	Myotonic disorders
DG17	Central nervous diseases	35921	Myotonic muscular dystrophy
DG17	Central nervous diseases	35922	Myotonia congenita
DG17	Central nervous diseases	35923	Myotonic chondrodystrophy

DG17	Central nervous diseases	35924	Drug- induced myotonia
DG17	Central nervous diseases	35929	Other specified myotonic disorder
DG17	Central nervous diseases	3593	Periodic paralysis
DG17	Central nervous diseases	3595	Myopathy in endocrine diseases classified elsewhere
DG17	Central nervous diseases	3596	Symptomatic inflammatory myopathy in diseases classified elsewhere
DG17	Central nervous diseases	3597	Inflammatory and immune myopathies, NEC
DG17	Central nervous diseases	35971	Inclusion body myositis
DG17	Central nervous diseases	35979	Other inflammatory and immune myopathies, NEC
DG17	Central nervous diseases	3598	Other myopathies
DG17	Central nervous diseases	35981	Critical illness myopathy
DG17	Central nervous diseases	35989	Other myopathies
DG17	Central nervous diseases	3599	Myopathy, unspecified
DG18	Nutrition disorders	260	Kwashiorkor
DG18	Nutrition disorders	261	Nutritional marasmus
DG18	Nutrition disorders	262	Other severe protein-calorie malnutrition
DG18	Nutrition disorders	263	Other and unspecified protein-calorie malnutrition
DG18	Nutrition disorders	2630	Malnutrition of moderate degree
DG18	Nutrition disorders	2631	Malnutrition of mild degree
DG18	Nutrition disorders	2632	Arrested development following protein-calorie malnutrition
DG18	Nutrition disorders	2638	Other protein-calorie malnutrition
DG18	Nutrition disorders	2639	Unspecified protein-calorie malnutrition
DG18	Nutrition disorders	2645	Vitamin A deficiency with night blindness
DG18	Nutrition disorders	268	Vitamin D deficiency
DG18	Nutrition disorders	2680	Rickets, active
DG18	Nutrition disorders	2681	Rickets, late effect
DG18	Nutrition disorders	2682	Osteomalacia, unspecified
DG18	Nutrition disorders	2689	Unspecified vitamin D deficiency
DG18	Nutrition disorders	270	Disorders of amino-acid transport and metabolism
DG18	Nutrition disorders	2700	Disturbances of amino-acid transport
DG18	Nutrition disorders	2701	Phenylketonuria [PKU]
DG18	Nutrition disorders	2702	Other disturbances of aromatic amino-acid metabolism
DG18	Nutrition disorders	2703	Disturbances of branched-chain amino-acid metabolism
DG18	Nutrition disorders	2704	Disturbances of sulphur-bearing amino-acid metabolism
DG18	Nutrition disorders	2705	Disturbances of histidine metabolism
DG18	Nutrition disorders	2706	Disorders of urea cycle metabolism

DG18	Nutrition disorders	2707	Other disturbances of straight-chain amino-acid metabolism
DG18	Nutrition disorders	2708	Other specified disorders of amino-acid metabolism
DG18	Nutrition disorders	2709	Unspecified disorder of amino-acid metabolism
DG18	Nutrition disorders	271	Disorders of carbohydrate transport and metabolism
DG18	Nutrition disorders	2710	Glycogenosis
DG18	Nutrition disorders	2711	Galactosemia
DG18	Nutrition disorders	2712	Hereditary fructose intolerance
DG18	Nutrition disorders	2713	Intestinal disaccharidase deficiencies and disaccharide malabsorption
DG18	Nutrition disorders	2714	Renal glycosuria
DG18	Nutrition disorders	2718	Other specified disorders of carbohydrate transport and metabolism
DG18	Nutrition disorders	2719	Unspecified disorder of carbohydrate transport and metabolism
DG18	Nutrition disorders	273	Disorders of plasma protein metabolism
DG18	Nutrition disorders	2730	Polyclonal hypergammaglobulinemia
DG18	Nutrition disorders	2731	Monoclonal paraproteinemia
DG18	Nutrition disorders	2732	Other paraproteinemias
DG18	Nutrition disorders	2733	Macroglobulinemia
DG18	Nutrition disorders	2734	Alpha-1-antitrypsin deficiency
DG18	Nutrition disorders	2738	Other disorders of plasma protein metabolism
DG18	Nutrition disorders	2739	Unspecified disorder of plasma protein metabolism
DG19	Endocrine diseases	242	Thyrotoxicosis with or without goiter
DG19	Endocrine diseases	2420	Toxic diffuse goiter
DG19	Endocrine diseases	24200	Toxic diffuse goiter without mention of thyrotoxic crisis or storm
DG19	Endocrine diseases	24201	Toxic diffuse goiter with mention of thyrotoxic crisis or storm
DG19	Endocrine diseases	2421	Toxic uninodular goiter
DG19	Endocrine diseases	24210	Toxic uninodular goiter without mention of thyrotoxic crisis or storm
DG19	Endocrine diseases	24211	Toxic uninodular goiter with mention of thyrotoxic crisis or storm
DG19	Endocrine diseases	2422	Toxic multinodular goiter
DG19	Endocrine diseases	24220	Toxic multinodular goiter without mention of thyrotoxic crisis or storm
DG19	Endocrine diseases	24221	Toxic multinodular goiter with mention of thyrotoxic crisis or storm
DG19	Endocrine diseases	2423	Toxic nodular goiter, unspecified
DG19	Endocrine diseases	24230	Toxic nodular goiter, unspecified type, without mention of thyrotoxic crisis or storm
DG19	Endocrine diseases	24231	Toxic nodular goiter, unspecified type, with mention of thyrotoxic crisis or storm
DG19	Endocrine diseases	2424	Thyrotoxicosis from ectopic thyroid nodule
DG19	Endocrine diseases	24240	Thyrotoxicosis from ectopic thyroid nodule without mention of thyrotoxic crisis or storm
DG19	Endocrine diseases	24241	Thyrotoxicosis from ectopic thyroid nodule with mention of thyrotoxic crisis or storm

DG19	Endocrine diseases	2428	Thyrotoxicosis of other specified origin
DG19	Endocrine diseases	24280	Thyrotoxicosis of other specified origin without mention of thyrotoxic crisis or storm
DG19	Endocrine diseases	24281	Thyrotoxicosis of other specified origin with mention of thyrotoxic crisis or storm
DG19	Endocrine diseases	2429	Thyrotoxicosis without mention of goiter or other cause
DG19	Endocrine diseases	24290	Thyrotoxicosis without mention of goiter or other cause, and without mention of thyrotoxic crisis or storm
DG19	Endocrine diseases	24291	Thyrotoxicosis without mention of goiter or other cause, with mention of thyrotoxic crisis or storm
DG19	Endocrine diseases	253	Disorders of the pituitary gland and its hypothalamic control
DG19	Endocrine diseases	2530	Acromegaly and gigantism
DG19	Endocrine diseases	2531	Other and unspecified anterior pituitary hyperfunction
DG19	Endocrine diseases	2532	Panhypopituitarism
DG19	Endocrine diseases	2533	Pituitary dwarfism
DG19	Endocrine diseases	2534	Other anterior pituitary disorders
DG19	Endocrine diseases	2535	Diabetes insipidus
DG19	Endocrine diseases	2536	Other disorders of neurohypophysis
DG19	Endocrine diseases	2537	Iatrogenic pituitary disorders
DG19	Endocrine diseases	2538	Other disorders of the pituitary and other syndromes of diencephalohypophyseal origin
DG19	Endocrine diseases	2539	Unspecified disorder of the pituitary gland and its hypothalamic control
DG19	Endocrine diseases	255	Disorders of adrenal glands
DG19	Endocrine diseases	2550	Cushing's syndrome
DG19	Endocrine diseases	2551	Hyperaldosteronism
DG19	Endocrine diseases	25510	Hyperaldosteronism, unspecified
DG19	Endocrine diseases	25511	Glucocorticoid-remediable aldosteronism
DG19	Endocrine diseases	25512	Conn's syndrome
DG19	Endocrine diseases	25513	Bartter's syndrome
DG19	Endocrine diseases	25514	Other secondary aldosteronism
DG19	Endocrine diseases	2552	Adrenogenital disorders
DG19	Endocrine diseases	2553	Other corticoadrenal overactivity
DG19	Endocrine diseases	2554	Corticoadrenal insufficiency
DG19	Endocrine diseases	25541	Glucocorticoid deficiency
DG19	Endocrine diseases	25542	Mineralocorticoid deficiency
DG19	Endocrine diseases	2555	Other adrenal hypofunction
DG19	Endocrine diseases	2556	Medulloadrenal hyperfunction
DG19	Endocrine diseases	2558	Other specified disorders of adrenal glands
DG19	Endocrine diseases	2559	Unspecified disorder of adrenal glands
DG19	Endocrine diseases	258	Polyglandular dysfunction and related disorders
DG19	Endocrine diseases	2580	Polyglandular activity in multiple endocrine adenomatosis
DG19	Endocrine diseases	25801	Multiple endocrine neoplasia [MEN] type I
DG19	Endocrine diseases	25802	Multiple endocrine neoplasia [MEN] type IIA
DG19	Endocrine diseases	25803	Multiple endocrine neoplasia [MEN] type IIB
DG19	Endocrine diseases	2581	Other combinations of endocrine dysfunction
DG19	Endocrine diseases	2588	Other specified polyglandular dysfunction

DG19	Endocrine diseases	2589	Polyglandular dysfunction, unspecified
DG19	Endocrine diseases	275	Disorders of mineral metabolism
DG19	Endocrine diseases	2750	Disorders of iron metabolism
DG19	Endocrine diseases	27501	Hereditary hemochromatosis
DG19	Endocrine diseases	27502	Hemochromatosis due to repeated red blood cell transfusions
DG19	Endocrine diseases	27503	Other hemochromatosis
DG19	Endocrine diseases	27509	Other disorders of iron metabolism
DG19	Endocrine diseases	2751	Disorders of copper metabolism
DG19	Endocrine diseases	2752	Disorders of magnesium metabolism
DG19	Endocrine diseases	2753	Disorders of phosphorus metabolism
DG19	Endocrine diseases	2754	Disorders of calcium metabolism
DG19	Endocrine diseases	27540	Unspecified disorder of calcium metabolism
DG19	Endocrine diseases	27541	Hypocalcemia
DG19	Endocrine diseases	27542	Hypercalcemia
DG19	Endocrine diseases	27549	Other disorders of calcium metabolism
DG19	Endocrine diseases	2755	Hungry bone syndrome
DG19	Endocrine diseases	2758	Other specified disorders of mineral metabolism
DG19	Endocrine diseases	2759	Unspecified disorder of mineral metabolism
DG20	Skin alterations	6918	Other atopic dermatitis and related conditions
DG20	Skin alterations	6953	Rosacea
DG20	Skin alterations	6954	Lupus erythematosus
DG20	Skin alterations	696	Psoriasis and similar disorders
DG20	Skin alterations	6960	Psoriatic arthropathy
DG20	Skin alterations	6961	Other psoriasis
DG20	Skin alterations	6962	Parapsoriasis
DG20	Skin alterations	6963	Pityriasis rosea
DG20	Skin alterations	6964	Pityriasis rubra pilaris
DG20	Skin alterations	6965	Other and unspecified pityriasis
DG20	Skin alterations	6968	Other psoriasis and similar disorders
DG20	Skin alterations	7050	Anhidrosis
DG20	Skin alterations	70582	Fox-Fordyce disease
DG20	Skin alterations	707	Chronic ulcer of skin
DG20	Skin alterations	7070	Pressure ulcer
DG20	Skin alterations	70700	Pressure ulcer, unspecified site
DG20	Skin alterations	70701	Pressure ulcer, elbow
DG20	Skin alterations	70702	Pressure ulcer, upper back
DG20	Skin alterations	70703	Pressure ulcer, lower back
DG20	Skin alterations	70704	Pressure ulcer, hip
DG20	Skin alterations	70705	Pressure ulcer, buttock
DG20	Skin alterations	70706	Pressure ulcer, ankle
DG20	Skin alterations	70707	Pressure ulcer, heel
DG20	Skin alterations	70709	Pressure ulcer, other site
DG20	Skin alterations	7071	Ulcer of lower limbs, except pressure ulcer
DG20	Skin alterations	70710	Ulcer of lower limb, unspecified
DG20	Skin alterations	70711	Ulcer of thigh

DG20	Skin alterations	70712	Ulcer of calf
DG20	Skin alterations	70713	Ulcer of ankle
DG20	Skin alterations	70714	Ulcer of heel and midfoot
DG20	Skin alterations	70715	Ulcer of other part of foot
DG20	Skin alterations	70719	Ulcer of other part of lower limb
DG20	Skin alterations	7072	Pressure ulcer stages
DG20	Skin alterations	70720	Pressure ulcer, unspecified stage
DG20	Skin alterations	70721	Pressure ulcer, stage I
DG20	Skin alterations	70722	Pressure ulcer, stage II
DG20	Skin alterations	70723	Pressure ulcer, stage III
DG20	Skin alterations	70724	Pressure ulcer, stage IV
DG20	Skin alterations	70725	Pressure ulcer, unstageable
DG20	Skin alterations	7078	Chronic ulcer of other specified sites
DG20	Skin alterations	7079	Chronic ulcer of unspecified site
DG21	Renal diseases	403	Hypertensive chronic kidney disease
DG21	Renal diseases	4030	Malignant
DG21	Renal diseases	40300	Hypertensive chronic kidney disease, malignant, with chronic kidney disease stage I through stage IV, or unspecified
DG21	Renal diseases	40301	Hypertensive chronic kidney disease, malignant, with chronic kidney disease stage V or end stage renal disease
DG21	Renal diseases	4031	Benign
DG21	Renal diseases	40310	Hypertensive chronic kidney disease, benign, with chronic kidney disease stage I through stage IV, or unspecified
DG21	Renal diseases	40311	Hypertensive chronic kidney disease, benign, with chronic kidney disease stage V or end stage renal disease
DG21	Renal diseases	4039	Unspecified
DG21	Renal diseases	40390	Hypertensive chronic kidney disease, unspecified, with chronic kidney disease stage I through stage IV, or unspecified
DG21	Renal diseases	40391	Hypertensive chronic kidney disease, unspecified, with chronic kidney disease stage V or end stage renal disease
DG21	Renal diseases	581	Nephrotic syndrome
DG21	Renal diseases	5810	Nephrotic syndrome with lesion of proliferative glomerulonephritis
DG21	Renal diseases	5811	Nephrotic syndrome with lesion of membranous glomerulonephritis
DG21	Renal diseases	5812	Nephrotic syndrome with lesion of membranoproliferative glomerulonephritis
DG21	Renal diseases	5813	Nephrotic syndrome with lesion of minimal change glomerulonephritis
DG21	Renal diseases	5818	With other specified pathological lesion in kidney
DG21	Renal diseases	58181	Nephrotic syndrome in diseases classified elsewhere
DG21	Renal diseases	58189	Nephrotic syndrome with other specified pathological lesion in kidney
DG21	Renal diseases	5819	Nephrotic syndrome with unspecified pathological lesion in kidney
DG21	Renal diseases	582	Chronic glomerulonephritis

DG21	Renal diseases	5820	Chronic glomerulonephritis with lesion of proliferative glomerulonephritis
DG21	Renal diseases	5821	Chronic glomerulonephritis with lesion of membranous glomerulonephritis
DG21	Renal diseases	5822	Chronic glomerulonephritis with lesion of membranoproliferative glomerulonephritis
DG21	Renal diseases	5824	Chronic glomerulonephritis with lesion of rapidly progressive glomerulonephritis
DG21	Renal diseases	5828	With other specified pathological lesion in kidney
DG21	Renal diseases	58281	Chronic glomerulonephritis in diseases classified elsewhere
DG21	Renal diseases	58289	Chronic glomerulonephritis with other specified pathological lesion in kidney
DG21	Renal diseases	5829	Chronic glomerulonephritis with unspecified pathological lesion in kidney
DG21	Renal diseases	585	Chronic kidney disease (CKD)
DG21	Renal diseases	5851	Chronic kidney disease, Stage I
DG21	Renal diseases	5852	Chronic kidney disease, Stage II (mild)
DG21	Renal diseases	5853	Chronic kidney disease, Stage III (moderate)
DG21	Renal diseases	5854	Chronic kidney disease, Stage IV (severe)
DG21	Renal diseases	5855	Chronic kidney disease, Stage V
DG21	Renal diseases	5856	End stage renal disease
DG21	Renal diseases	5859	Chronic kidney disease, unspecified
DG21	Renal diseases	586	Renal failure, unspecified
DG21	Renal diseases	587	Renal sclerosis, unspecified
DG21	Renal diseases	588	Disorders resulting from impaired renal function
DG21	Renal diseases	5880	Renal osteodystrophy
DG21	Renal diseases	5881	Nephrogenic diabetes insipidus
DG21	Renal diseases	5888	Other specified disorders resulting from impaired renal function
DG21	Renal diseases	58881	Secondary hyperparathyroidism (of renal origin)
DG21	Renal diseases	58889	Other specified disorders resulting from impaired renal function
DG21	Renal diseases	5889	Unspecified disorder resulting from impaired renal function
DG21	Renal diseases	59382	Ureteral fistula
DG22	Pregnancy and delivery disorders	6491	Obesity complicating pregnancy, childbirth, or the puerperium
DG22	Pregnancy and delivery disorders	64910	Obesity complicating pregnancy, childbirth, or the puerperium, unspecified as to episode of care or not applicable
DG22	Pregnancy and delivery disorders	64911	Obesity complicating pregnancy, childbirth, or the puerperium, delivered, with or without mention of antepartum condition
DG22	Pregnancy and delivery disorders	64912	Obesity complicating pregnancy, childbirth, or the puerperium, delivered, with mention of postpartum complication
DG22	Pregnancy and delivery disorders	64913	Obesity complicating pregnancy, childbirth, or the puerperium, antepartum condition or complication
DG22	Pregnancy and delivery disorders	64914	Obesity complicating pregnancy, childbirth, or the puerperium, postpartum condition or complication

DG23	Childhood events	314	Hyperkinetic syndrome of childhood
DG23	Childhood events	3140	Attention deficit disorder
DG23	Childhood events	31400	Attention deficit disorder without mention of hyperactivity
DG23	Childhood events	31401	Attention deficit disorder with hyperactivity
DG23	Childhood events	3141	Hyperkinesis with developmental delay
DG23	Childhood events	3142	Hyperkinetic conduct disorder
DG23	Childhood events	3148	Other specified manifestations of hyperkinetic syndrome
DG23	Childhood events	3149	Unspecified hyperkinetic syndrome
DG23	Childhood events	330	Cerebral degenerations usually manifest in childhood
DG23	Childhood events	3300	Leukodystrophy
DG23	Childhood events	3301	Cerebral lipidoses
DG23	Childhood events	3302	Cerebral degeneration in generalized lipidoses
DG23	Childhood events	3303	Cerebral degeneration of childhood in other diseases classified elsewhere
DG23	Childhood events	3308	Other specified cerebral degenerations in childhood
DG23	Childhood events	3309	Unspecified cerebral degeneration in childhood
DG23	Childhood events	742	Other congenital anomalies of nervous system
DG23	Childhood events	7420	Encephalocele
DG23	Childhood events	7421	Microcephalus
DG23	Childhood events	7422	Congenital reduction deformities of brain
DG23	Childhood events	7423	Congenital hydrocephalus
DG23	Childhood events	7424	Other specified congenital anomalies of brain
DG23	Childhood events	7425	Other specified anomalies of spinal cord
DG23	Childhood events	74251	Diastematomyelia
DG23	Childhood events	74253	Hydromyelia
DG23	Childhood events	74259	Other specified congenital anomalies of spinal cord
DG23	Childhood events	7428	Other specified congenital anomalies of nervous system
DG23	Childhood events	7429	Unspecified congenital anomaly of brain, spinal cord, and nervous system
DG23	Childhood events	74601	Atresia of pulmonary valve, congenital
DG23	Childhood events	74602	Stenosis of pulmonary valve, congenital
DG23	Childhood events	74609	Other congenital anomalies of pulmonary valve
DG23	Childhood events	7461	Tricuspid atresia and stenosis, congenital
DG23	Childhood events	7462	Ebstein's anomaly
DG23	Childhood events	7463	Congenital stenosis of aortic valve
DG23	Childhood events	7464	Congenital insufficiency of aortic valve
DG23	Childhood events	7465	Congenital mitral stenosis
DG23	Childhood events	7466	Congenital mitral insufficiency
DG23	Childhood events	7467	Hypoplastic left heart syndrome
DG23	Childhood events	7468	Other specified anomalies of heart
DG23	Childhood events	74681	Subaortic stenosis
DG23	Childhood events	74682	Cor triatriatum
DG23	Childhood events	74683	Infundibular pulmonic stenosis
DG23	Childhood events	74684	Obstructive anomalies of heart, not elsewhere classified
DG23	Childhood events	74685	Coronary artery anomaly
DG23	Childhood events	74686	Congenital heart block
DG23	Childhood events	74687	Malposition of heart and cardiac apex

DG23	Childhood events	74689	Other specified congenital anomalies of heart
DG23	Childhood events	7469	Unspecified congenital anomaly of heart
DG23	Childhood events	747	Other congenital anomalies of circulatory system
DG23	Childhood events	7470	Patent ductus arteriosus
DG23	Childhood events	7471	Coarctation of aorta
DG23	Childhood events	74710	Coarctation of aorta (preductal) (postductal)
DG23	Childhood events	74711	Interruption of aortic arch
DG23	Childhood events	7472	Other anomalies of aorta
DG23	Childhood events	74720	Anomaly of aorta, unspecified
DG23	Childhood events	74721	Anomalies of aortic arch
DG23	Childhood events	74722	Atresia and stenosis of aorta
DG23	Childhood events	74729	Other anomalies of aorta
DG23	Childhood events	7473	Anomalies of pulmonary artery
DG23	Childhood events	74731	Pulmonary artery coarctation and atresia
DG23	Childhood events	74732	Pulmonary arteriovenous malformation
			Other anomalies of pulmonary artery and pulmonary circulation
DG23	Childhood events	74739	
DG23	Childhood events	7474	Anomalies of great veins
DG23	Childhood events	74740	Anomaly of great veins, unspecified
DG23	Childhood events	74741	Total anomalous pulmonary venous connection
DG23	Childhood events	74742	Partial anomalous pulmonary venous connection
DG23	Childhood events	74749	Other anomalies of great veins
DG23	Childhood events	7475	Absence or hypoplasia of umbilical artery
DG23	Childhood events	7476	Other anomalies of peripheral vascular system
DG23	Childhood events	74760	Anomaly of the peripheral vascular system, unspecified site
DG23	Childhood events	74761	Gastrointestinal vessel anomaly
DG23	Childhood events	74762	Renal vessel anomaly
DG23	Childhood events	74763	Upper limb vessel anomaly
DG23	Childhood events	74764	Lower limb vessel anomaly
			Anomalies of other specified sites of peripheral vascular system
DG23	Childhood events	74769	
DG23	Childhood events	7478	Other specified anomalies of circulatory system
DG23	Childhood events	74781	Anomalies of cerebrovascular system
DG23	Childhood events	74782	Spinal vessel anomaly
DG23	Childhood events	74783	Persistent fetal circulation
DG23	Childhood events	74789	Other specified anomalies of circulatory system
DG23	Childhood events	7479	Unspecified anomaly of circulatory system
DG23	Childhood events	748	Congenital anomalies of respiratory system
DG23	Childhood events	7480	Choanal atresia
DG23	Childhood events	7481	Other anomalies of nose
DG23	Childhood events	7482	Web of larynx
DG23	Childhood events	7483	Other anomalies of larynx, trachea, and bronchus
DG23	Childhood events	7484	Congenital cystic lung
DG23	Childhood events	7485	Agenesis, hypoplasia, and dysplasia of lung
DG23	Childhood events	7486	Other anomalies of lung
DG23	Childhood events	74860	Anomaly of lung, unspecified
DG23	Childhood events	74861	Congenital bronchiectasis

DG23	Childhood events	74869	Other congenital anomalies of lung
DG23	Childhood events	7488	Other specified anomalies of respiratory system
DG23	Childhood events	7489	Unspecified anomaly of respiratory system
DG23	Childhood events	749	Cleft palate and cleft lip
DG23	Childhood events	7490	Cleft palate
DG23	Childhood events	74900	Cleft palate, unspecified
DG23	Childhood events	74901	Cleft palate, unilateral, complete
DG23	Childhood events	74902	Cleft palate, unilateral, incomplete
DG23	Childhood events	74903	Cleft palate, bilateral, complete
DG23	Childhood events	74904	Cleft palate, bilateral, incomplete
DG23	Childhood events	7491	Cleft lip
DG23	Childhood events	74910	Cleft lip, unspecified
DG23	Childhood events	74911	Cleft lip, unilateral, complete
DG23	Childhood events	74912	Cleft lip, unilateral, incomplete
DG23	Childhood events	74913	Cleft lip, bilateral, complete
DG23	Childhood events	74914	Cleft lip, bilateral, incomplete
DG23	Childhood events	7492	Cleft palate with cleft lip
DG23	Childhood events	74920	Cleft palate with cleft lip, unspecified
DG23	Childhood events	74921	Cleft palate with cleft lip, unilateral, complete
DG23	Childhood events	74922	Cleft palate with cleft lip, unilateral, incomplete
DG23	Childhood events	74923	Cleft palate with cleft lip, bilateral, complete
DG23	Childhood events	74924	Cleft palate with cleft lip, bilateral, incomplete
DG23	Childhood events	74925	Other combinations of cleft palate with cleft lip
DG23	Childhood events	76071	Alcohol affecting fetus or newborn via placenta or breast milk
DG23	Childhood events	76072	Narcotics affecting fetus or newborn via placenta or breast milk
DG23	Childhood events	76073	Hallucinogenic agents affecting fetus or newborn via placenta or breast milk
DG23	Childhood events	76075	Cocaine affecting fetus or newborn via placenta or breast milk
DG23	Childhood events	76076	Diethylstilbestrol [DES] affecting fetus or newborn via placenta or breast milk
DG23	Childhood events	76077	Anticonvulsants affecting fetus or newborn via placenta or breast milk
DG23	Childhood events	76078	Antimetabolic agents affecting fetus or newborn via placenta or breast milk
DG24	Eyes disorders	3721	Chronic conjunctivitis
DG24	Eyes disorders	37210	Chronic conjunctivitis, unspecified
DG24	Eyes disorders	37211	Simple chronic conjunctivitis
DG24	Eyes disorders	37212	Chronic follicular conjunctivitis
DG24	Eyes disorders	37213	Vernal conjunctivitis
DG24	Eyes disorders	37214	Other chronic allergic conjunctivitis
DG24	Eyes disorders	37215	Parasitic conjunctivitis
DG25	Other alterations	302	Sexual and gender identity disorders
DG25	Other alterations	3020	Ego-dystonic sexual orientation
DG25	Other alterations	3021	Zoophilia

DG25	Other alterations	3022	Pedophilia
DG25	Other alterations	3023	Transvestic fetishism
DG25	Other alterations	3024	Exhibitionism
DG25	Other alterations	3025	Trans-sexualism
DG25	Other alterations	30250	Trans-sexualism with unspecified sexual history
DG25	Other alterations	30251	Trans-sexualism with asexual history
DG25	Other alterations	30252	Trans-sexualism with homosexual history
DG25	Other alterations	30253	Trans-sexualism with heterosexual history
DG25	Other alterations	3026	Gender identity disorder in children
DG25	Other alterations	3027	Psychosexual dysfunction
DG25	Other alterations	30270	Psychosexual dysfunction, unspecified
DG25	Other alterations	30271	Hypoactive sexual desire disorder
DG25	Other alterations	30272	Psychosexual dysfunction with inhibited sexual excitement
DG25	Other alterations	30273	Female orgasmic disorder
DG25	Other alterations	30274	Male orgasmic disorder
DG25	Other alterations	30275	Premature ejaculation
DG25	Other alterations	30276	Dyspareunia, psychogenic
DG25	Other alterations	30279	Psychosexual dysfunction with other specified psychosexual dysfunctions
DG25	Other alterations	3028	Other specified psychosexual disorders
DG25	Other alterations	30281	Fetishism
DG25	Other alterations	30282	Voyeurism
DG25	Other alterations	30283	Sexual masochism
DG25	Other alterations	30284	Sexual sadism
DG25	Other alterations	30285	Gender identity disorder in adolescents or adults
DG25	Other alterations	30289	Other specified psychosexual disorders
DG25	Other alterations	3029	Unspecified psychosexual disorder
DG25	Other alterations	3070	Adult onset fluency disorder
DG25	Other alterations	3071	Anorexia nervosa
DG25	Other alterations	3072	Tics
DG25	Other alterations	30720	Tic disorder, unspecified
DG25	Other alterations	30721	Transient tic disorder
DG25	Other alterations	30722	Chronic motor or vocal tic disorder
DG25	Other alterations	30723	Tourette's disorder
DG25	Other alterations	3073	Stereotypic movement disorder
DG25	Other alterations	30740	Nonorganic sleep disorder, unspecified
DG25	Other alterations	30742	Persistent disorder of initiating or maintaining sleep
DG25	Other alterations	30744	Persistent disorder of initiating or maintaining wakefulness
DG25	Other alterations	30745	Circadian rhythm sleep disorder of nonorganic origin
DG25	Other alterations	30746	Sleep arousal disorder
DG25	Other alterations	30747	Other dysfunctions of sleep stages or arousal from sleep
DG25	Other alterations	30748	Repetitive intrusions of sleep
DG25	Other alterations	30749	Other specific disorders of sleep of nonorganic origin
DG25	Other alterations	3075	Other and unspecified disorders of eating
DG25	Other alterations	30750	Eating disorder, unspecified
DG25	Other alterations	30751	Bulimia nervosa

DG25	Other alterations	30752	Pica
DG25	Other alterations	30753	Rumination disorder
DG25	Other alterations	30754	Psychogenic vomiting
DG25	Other alterations	30759	Other disorders of eating
DG25	Other alterations	3076	Enuresis
DG25	Other alterations	3077	Encopresis
DG25	Other alterations	3078	Pain disorders related to psychological factors
DG25	Other alterations	30780	Psychogenic pain, site unspecified
DG25	Other alterations	30781	Tension headache
DG25	Other alterations	30789	Other pain disorders related to psychological factors
DG25	Other alterations	3079	Other and unspecified special symptoms or syndromes, not elsewhere classified
DG25	Other alterations	3380	Central pain syndrome
DG25	Other alterations	3382	Chronic pain
DG25	Other alterations	33821	Chronic pain due to trauma
DG25	Other alterations	33822	Chronic post-thoracotomy pain
DG25	Other alterations	33828	Other chronic postoperative pain
DG25	Other alterations	33829	Other chronic pain
DG25	Other alterations	3383	Neoplasm related pain (acute) (chronic)
DG25	Other alterations	3384	Chronic pain syndrome
DG25	Other alterations	797	Senility without mention of psychosis
DG25	Other alterations	79951	Attention or concentration deficit
DG25	Other alterations	79952	Cognitive communication deficit
DG25	Other alterations	79953	Visuospatial deficit
DG25	Other alterations	79954	Psychomotor deficit
DG25	Other alterations	79955	Frontal lobe and executive function deficit
DG25	Other alterations	99981	Extravasation of vesicant chemotherapy
DG26	Immune system disorders	279	Disorders involving the immune mechanism
DG26	Immune system disorders	2790	Deficiency of humoral immunity
DG26	Immune system disorders	27900	Hypogammaglobulinemia, unspecified
DG26	Immune system disorders	27901	Selective IgA immunodeficiency
DG26	Immune system disorders	27902	Selective IgM immunodeficiency
DG26	Immune system disorders	27903	Other selective immunoglobulin deficiencies
DG26	Immune system disorders	27904	Congenital hypogammaglobulinemia
DG26	Immune system disorders	27905	Immunodeficiency with increased IgM
DG26	Immune system disorders	27906	Common variable immunodeficiency
DG26	Immune system disorders	27909	Other deficiency of humoral immunity

DG26	Immune system disorders	2791	Deficiency of cell-mediated immunity
DG26	Immune system disorders	27910	Immunodeficiency with predominant T-cell defect, unspecified
DG26	Immune system disorders	27911	Digeorge's syndrome
DG26	Immune system disorders	27912	Wiskott-aldrich syndrome
DG26	Immune system disorders	27913	Nezelof's syndrome
DG26	Immune system disorders	27919	Other deficiency of cell-mediated immunity
DG26	Immune system disorders	2792	Combined immunity deficiency
DG26	Immune system disorders	2793	Unspecified immunity deficiency
DG26	Immune system disorders	2794	Autoimmune disease, not elsewhere classified
DG26	Immune system disorders	27941	Autoimmune lymphoproliferative syndrome
DG26	Immune system disorders	27949	Autoimmune disease, not elsewhere classified
DG26	Immune system disorders	2795	Graft-versus-host disease
DG26	Immune system disorders	27950	Graft-versus-host disease, unspecified
DG26	Immune system disorders	27951	Acute graft-versus-host disease
DG26	Immune system disorders	27952	Chronic graft-versus-host disease
DG26	Immune system disorders	27953	Acute on chronic graft-versus-host disease
DG26	Immune system disorders	2798	Other specified disorders involving the immune mechanism
DG26	Immune system disorders	2799	Unspecified disorder of immune mechanism
DG26	Immune system disorders	79516	Papanicolaou smear of vagina with cytologic evidence of malignancy
DG27	Bone and cartilage disorders	720	Ankylosing spondylitis and other inflammatory spondylopathies
DG27	Bone and cartilage disorders	7200	Ankylosing spondylitis
DG27	Bone and cartilage disorders	7201	Spinal enthesopathy
DG27	Bone and cartilage disorders	7202	Sacroiliitis, not elsewhere classified
DG27	Bone and cartilage disorders	7208	Other inflammatory spondylopathies
DG27	Bone and cartilage disorders	72081	Inflammatory spondylopathies in diseases classified elsewhere

DG27	Bone and cartilage disorders	72089	Other inflammatory spondylopathies
DG27	Bone and cartilage disorders	7209	Unspecified inflammatory spondylopathy
DG27	Bone and cartilage disorders	732	Osteochondropathies
DG27	Bone and cartilage disorders	7320	Juvenile osteochondrosis of spine
DG27	Bone and cartilage disorders	7321	Juvenile osteochondrosis of hip and pelvis
DG27	Bone and cartilage disorders	7322	Nontraumatic slipped upper femoral epiphysis
DG27	Bone and cartilage disorders	7323	Juvenile osteochondrosis of upper extremity
DG27	Bone and cartilage disorders	7324	Juvenile osteochondrosis of lower extremity, excluding foot
DG27	Bone and cartilage disorders	7325	Juvenile osteochondrosis of foot
DG27	Bone and cartilage disorders	7326	Other juvenile osteochondrosis
DG27	Bone and cartilage disorders	7327	Osteochondritis dissecans
DG27	Bone and cartilage disorders	7328	Other specified forms of osteochondropathy
DG27	Bone and cartilage disorders	7329	Unspecified osteochondropathy
DG27	Bone and cartilage disorders	7330	Osteoporosis
DG27	Bone and cartilage disorders	73300	Osteoporosis, unspecified
DG27	Bone and cartilage disorders	73301	Senile osteoporosis
DG27	Bone and cartilage disorders	73302	Idiopathic osteoporosis
DG27	Bone and cartilage disorders	73303	Disuse osteoporosis
DG27	Bone and cartilage disorders	73309	Other osteoporosis
DG27	Bone and cartilage disorders	7334	Aseptic necrosis of bone
DG27	Bone and cartilage disorders	73340	Aseptic necrosis of bone, site unspecified
DG27	Bone and cartilage disorders	73341	Aseptic necrosis of head of humerus
DG27	Bone and cartilage disorders	73342	Aseptic necrosis of head and neck of femur
DG27	Bone and cartilage disorders	73343	Aseptic necrosis of medial femoral condyle
DG27	Bone and cartilage disorders	73344	Aseptic necrosis of talus

DG27	Bone and cartilage disorders	73345	Aseptic necrosis of bone, jaw
DG27	Bone and cartilage disorders	73349	Aseptic necrosis of bone, other
DG27	Bone and cartilage disorders	7370	Adolescent postural kyphosis
DG27	Bone and cartilage disorders	7371	Kyphosis (acquired)
DG27	Bone and cartilage disorders	73710	Kyphosis (acquired) (postural)
DG27	Bone and cartilage disorders	73711	Kyphosis due to radiation
DG27	Bone and cartilage disorders	73712	Kyphosis, postlaminectomy
DG27	Bone and cartilage disorders	73719	Other kyphosis (acquired)
DG27	Bone and cartilage disorders	7372	Lordosis (acquired)
DG27	Bone and cartilage disorders	73720	Lordosis (acquired) (postural)
DG27	Bone and cartilage disorders	73721	Lordosis, postlaminectomy
DG27	Bone and cartilage disorders	73722	Other postsurgical lordosis
DG27	Bone and cartilage disorders	73729	Other lordosis (acquired)
DG27	Bone and cartilage disorders	7373	Kyphoscoliosis and scoliosis
DG27	Bone and cartilage disorders	73730	Scoliosis [and kyphoscoliosis], idiopathic
DG27	Bone and cartilage disorders	73731	Resolving infantile idiopathic scoliosis
DG27	Bone and cartilage disorders	73732	Progressive infantile idiopathic scoliosis
DG27	Bone and cartilage disorders	73733	Scoliosis due to radiation
DG27	Bone and cartilage disorders	73734	Thoracogenic scoliosis
DG27	Bone and cartilage disorders	73739	Other kyphoscoliosis and scoliosis
DG27	Bone and cartilage disorders	7374	Curvature of spine associated with other conditions
DG27	Bone and cartilage disorders	73740	Curvature of spine, unspecified, associated with other conditions
DG27	Bone and cartilage disorders	73741	Kyphosis associated with other conditions
DG27	Bone and cartilage disorders	73742	Lordosis associated with other conditions
DG27	Bone and cartilage disorders	73743	Scoliosis associated with other conditions

Table S3. Comorbidity risk in the CHSS and Medicare datasets. Phi-correlation coefficient (Φ) and relative risk (RR) with 99.99% confidence intervals (CI) are shown for the two healthcare systems. DGs in the two datasets were compared using t-test. Significance was indicated as * $p < 0.0001$. Excluded DGs are shown with the filtering criteria in the Exclusion criteria column at the bottom of the table.

ID	Group	CHSS		Medicare		Group difference (p-val)	Exclusion criteria
		RR (99.9% CI)	Φ	RR (99.9% CI)	Φ		
DG01	Respiratory diseases	4.64 (4.5865, 4.6955)*	0.66*	1.78 (1.778, 1.7863)*	0.23*	<0.0001*	
DG15	Dependence	2.3 (2.2692, 2.3241)*	0.23*	2.37 (2.3453, 2.3877)*	0.11*	<0.0001*	
DG11	Circulation disorders	1.88 (1.8438, 1.9095)*	0.12*	1.47 (1.4611, 1.4744)*	0.09*	<0.0001*	
DG02	Heart diseases	1.53 (1.5175, 1.5398)*	0.16*	1.29 (1.284, 1.2884)*	0.13*	<0.0001*	
DG05	Malignancies of lower respiratory tract	2.56 (2.4385, 2.6818)*	0.07*	1.99 (1.9736, 2.0159)*	0.07*	<0.0001*	
DG04	Malignancies of upper respiratory tract	1.87 (1.8203, 1.9199)*	0.08*	1.44 (1.4282, 1.4538)*	0.04*	<0.0001*	
DG10	Genitalia and urinary disorders	1.48 (1.4613, 1.4898)*	0.12*	1.25 (1.2389, 1.2543)*	0.04*	<0.0001*	
DG21	Renal diseases	1.53 (1.5015, 1.549)*	0.08*	1.51 (1.5034, 1.5255)*	0.06*	>0.0001	
DG07	Hematological alterations	1.54 (1.5082, 1.5785)*	0.06*	1.36 (1.3534, 1.3689)*	0.06*	<0.0001*	
DG08	Digestive alterations	1.39 (1.3734, 1.4028)*	0.09*	1.28 (1.2794, 1.2873)*	0.08*	<0.0001*	
DG18	Nutrition disorders	1.53 (1.4832, 1.582)*	0.04*	1.77 (1.7547, 1.7866)*	0.07*	<0.0001*	
DG20	Skin alterations	1.42 (1.3914, 1.4525)*	0.05*	1.26 (1.26, 1.2664)*	0.09*	<0.0001*	
DG17	Central nervous diseases	1.42 (1.389, 1.4615)*	0.04*	1.43 (1.4194, 1.4503)*	0.04*	>0.0001	
DG06	Upper respiratory diseases	1.28 (1.2526, 1.3014)*	0.04*	1.6 (1.5805, 1.6203)*	0.04*	<0.0001*	
DG25	Other alterations	1.21 (1.1926, 1.2279)*	0.04*	1.94 (1.9242, 1.9536)*	0.1*	<0.0001*	
DG19	Endocrine diseases	1.31 (1.2737, 1.3568)*	0.03*	1.43 (1.4279, 1.4368)*	0.11*	<0.0001*	
DG14	Psychiatric disorders	1.09 (1.0793, 1.0999)*	0.03*	1.38 (1.3692, 1.385)*	0.06*	<0.0001*	
DG27	Bone and cartilage disorders	0.95 (0.9383, 0.9681)*	-0.01*	1.5 (1.4862, 1.513)*	0.05*	<0.0001*	
Excluded DGs							
DG3	Infectious diseases	-	-	-	-	-	non-chronic
DG24	Eyes disorders	-	-	-	-	-	non-chronic
DG9	Trauma	-	-	-	-	-	low prevalence (<1%)
DG12	Tuberculosis related alterations	-	-	-	-	-	low prevalence (<1%)
DG13	Intoxication/poisoning	-	-	-	-	-	low prevalence (<1%)
DG16	Sleep disorders	-	-	-	-	-	low prevalence (<1%)
DG22	Pregnancy and delivery disorders	-	-	-	-	-	low prevalence (<1%)
DG23	Childhood events	-	-	-	-	-	low prevalence (<1%)
DG26	Immune system disorders	-	-	-	-	-	low prevalence (<1%)

Table S4. Proportion of chronic and acute disease in the Medicare dataset.
Columns show the number of chronic and acute cases together, only chronic cases and the proportion of only chronic cases in the Medicare dataset.

Group ID	Name	N chronic+acute	N chronic	Proportion of chronic (%)
DG1	Respiratory diseases	6912595	2633165	38.1%
DG2	Heart diseases	17690349	17239177	97.4%
DG3	Infectious diseases	3086654	0	0.0%
DG4	Malignancies of upper respiratory tract	785534	620828	79.0%
DG5	Malignancies of lower respiratory tract	442409	442409	100.0%
DG6	Upper respiratory diseases	348059	119957	34.5%
DG7	Hematological alterations	1796501	382797	21.3%
DG8	Digestive alterations	6926922	1106052	16.0%
DG9	Trauma	449962	15700	3.5%
DG10	Genitalia and urinary disorders	1802392	854195	47.4%
DG11	Circulation disorders	2676207	1804818	67.4%
DG12	Tuberculosis related alterations	9077	9077	100.0%
DG13	Intoxication / poisoning	110743	908	0.8%
DG14	Psychiatric disorders	1999359	1466104	73.3%
DG15	Dependence	585975	448904	76.6%
DG16	Sleep disorders	2799	2799	100.0%
DG17	Central nervous diseases	503734	219856	43.6%
DG18	Nutrition disorders	975202	857012	87.9%
DG19	Endocrine diseases	3897326	291182	7.5%
DG20	Skin alterations	6069025	491349	8.1%
DG21	Renal diseases	1284160	640267	49.9%
DG22	Pregnancy and delivery disorders	1590	0	0.0%
DG23	Childhood events	40668	19803	48.7%
DG24	Eyes disorders	53354	0	0.0%
DG25	Other alterations	765605	25283	3.3%
DG26	Immune system disorders	28650	8104	28.3%
DG27	Bone and cartilage disorders	673312	14486	2.2%

REFERENCES

- 1 Gomez-Cabrero D, Menche J, Vargas C, *et al.* From comorbidities of chronic obstructive pulmonary disease to identification of shared molecular mechanisms by data integration. *BMC Bioinformatics* 2016;**17**:23–35. doi:10.1186/s12859-016-1291-3
- 2 Hidalgo CA, Blumm N, Barabási AL, *et al.* A Dynamic Network Approach for the Study of Human Phenotypes. *PLoS Comput Biol* 2009;**5**:e1000353. doi:10.1371/journal.pcbi.1000353