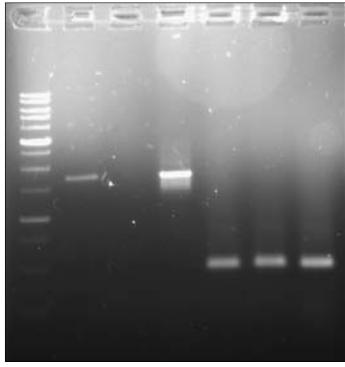
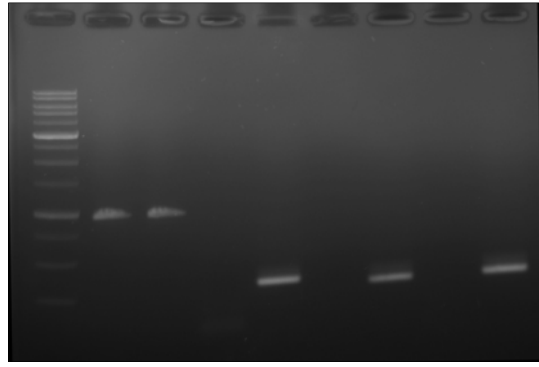


Supplementary Fig. S1 CN-independent (A) and CHN-independent (B) pathways for biosynthesis of BRs in Arabidopsis

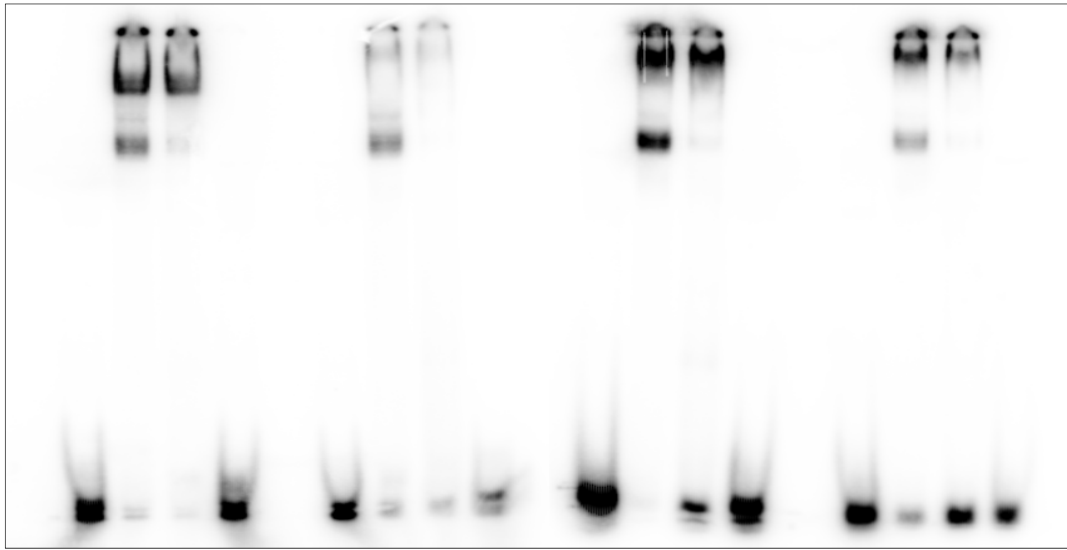
A Fig. 2B



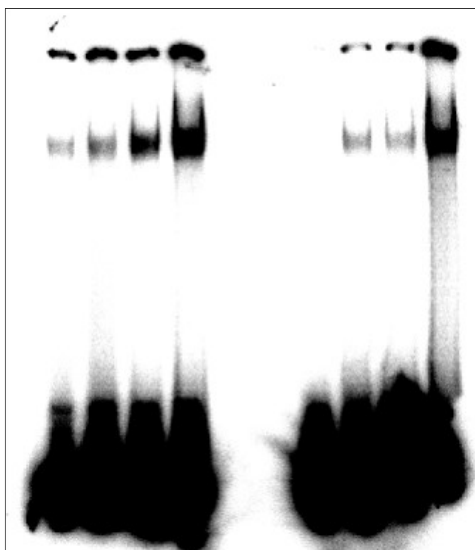
B Fig. 6E



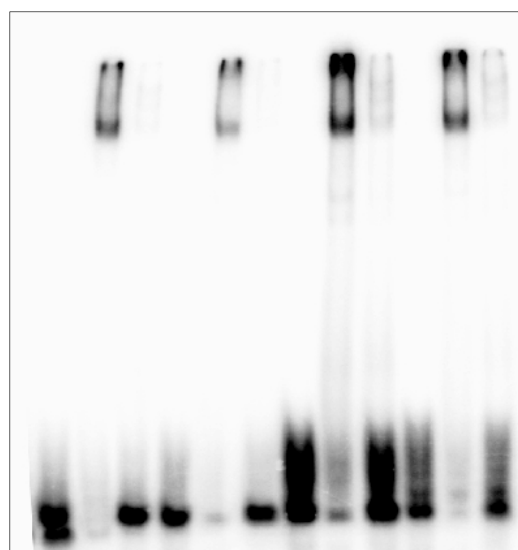
C Fig. 6F



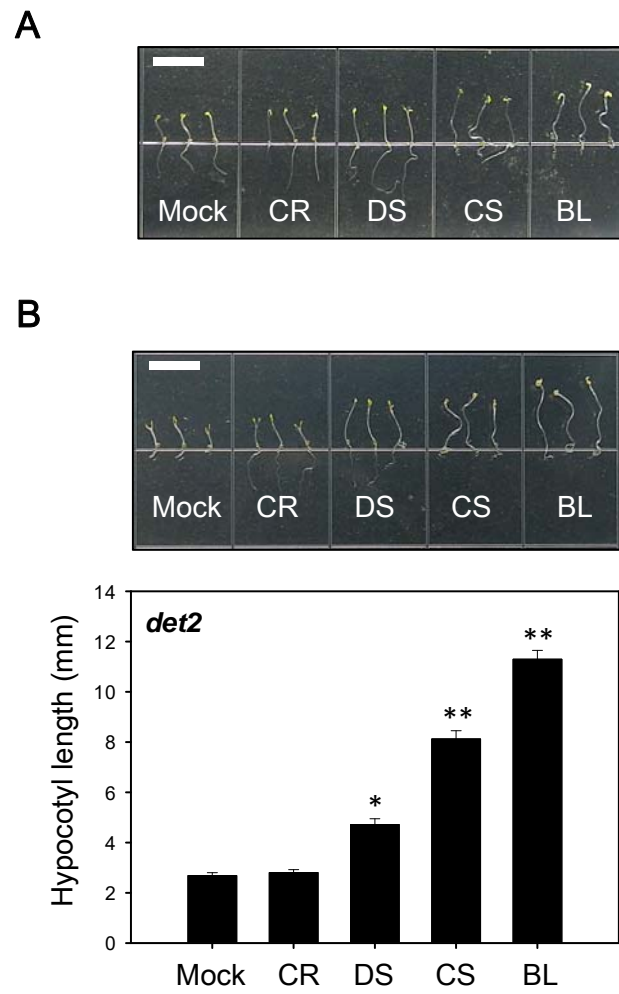
D Fig. 6G



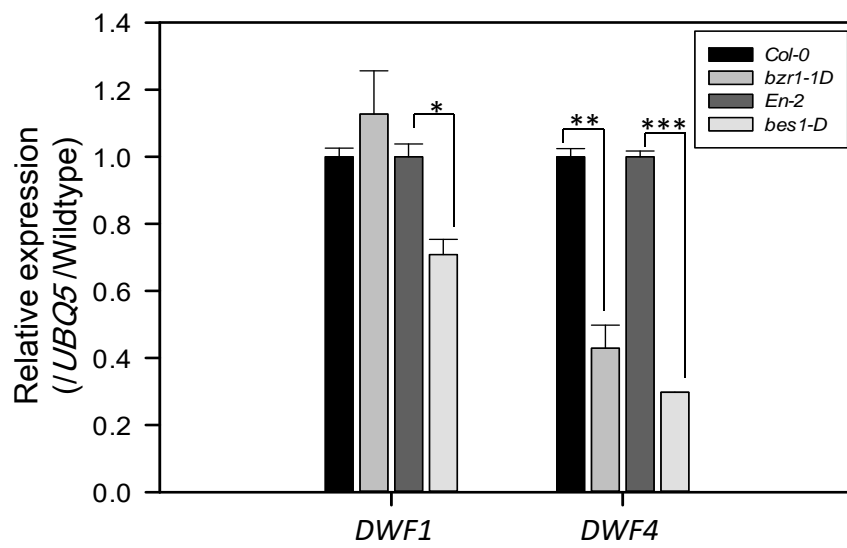
E Supplementary Fig. S4



Supplementary Fig. S2 Original images for all of the gels and blots presented in this report. (A) Fig.2B, (B) Fig. 6E, (C) Fig. 6F, (D) Fig. 6G. (E) Supplementary Fig.S5

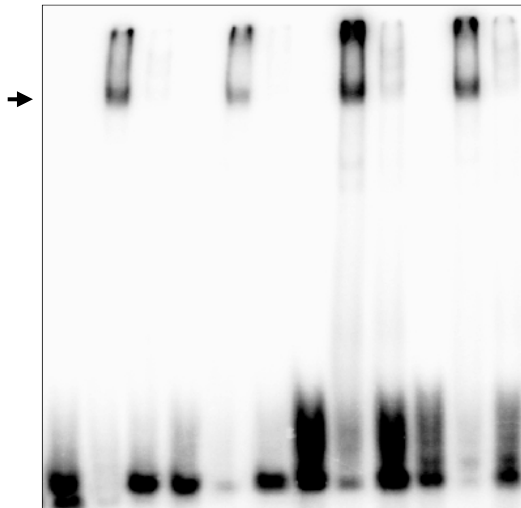


Supplementary Fig. S3 Hypocotyl length assay in 5-day-old seedlings of *dwf1* (A) and *det2* (B) mutant after application of 0.1 μ M CR, DS, CS and BL.

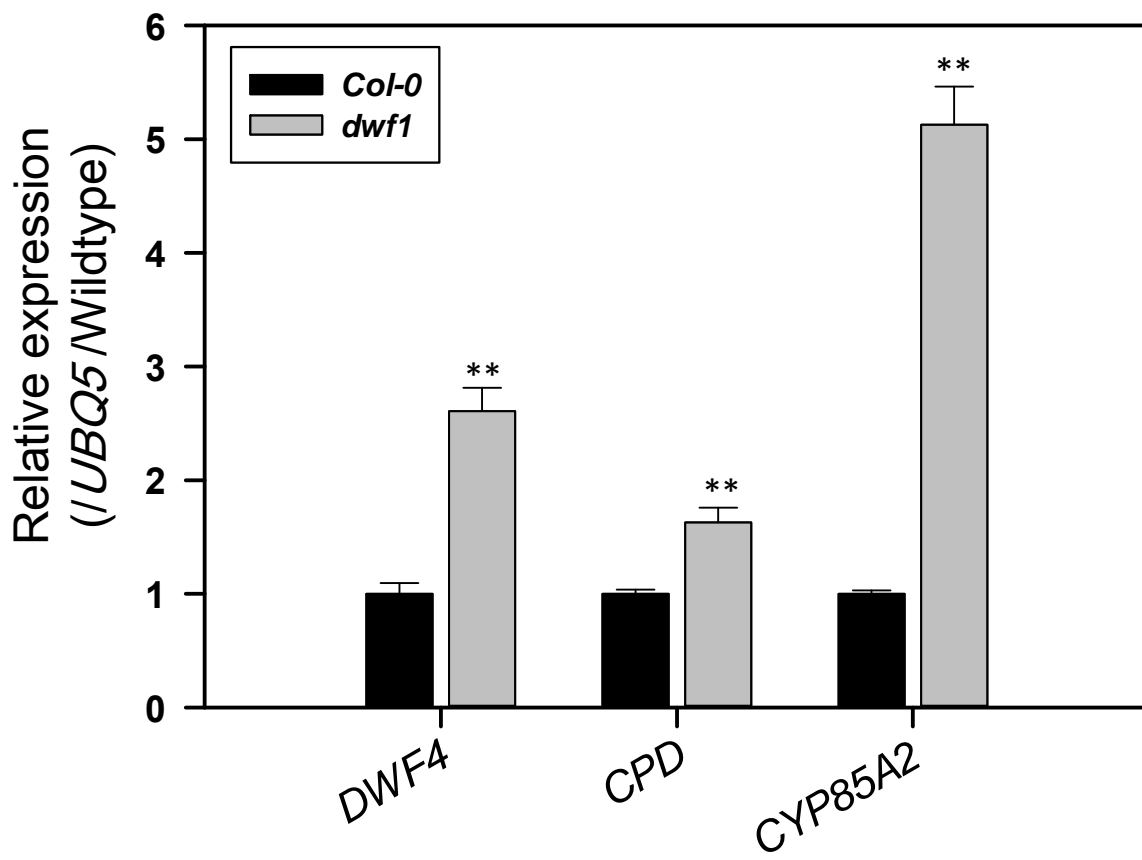


Supplementary Fig. S4 Expression level of *DWF1* and *DWF4* in BR-dominant mutants *bes1-D* and *bsr1-1D*.

E-box	1/2			3			5/6			4		
Hot probe	+	+	+	+	+	+	+	+	+	+	+	+
Cold probe	-	-	+	-	-	+	-	-	+	-	-	+
MBP	+	-	-	+	-	-	+	-	-	+	-	-
MBP-BES1	-	+	+	-	+	+	-	+	+	-	+	+



Supplementary Fig. S5 Competitive EMSA results for binding of MBP-BES1 to *DWF1* promoter in vitro.



Supplementary Fig. S6 Alternation of expression of BR biosynthetic genes in *dwf1* and Wild-type (Col-0).

Supplementary table S1. Sequences of DNA probes and primers used in this study

Name	Sequence		Usage
SAUR-AC1-c	Forward	GCAGAAAGGAGTCAGTGATG	ChIP
	Reverse	AAGACAGGACCACATGATTTG	
DWF1 E-box1/2-c	Forward	GTGTAGATCTAAAGATTATAA	
	Reverse	GTCAACAAGGCCTAAGAAGT	
DWF1 E-box5/6-c	Forward	TGTCTAATTAAGCTCTAGGTTCTGA	
	Reverse	TCGCAATTAATAAATTCGATGT	
DWF1 E-box1/2-e (WT)	Forward	TTTTTCTGATACACATGTGTGTATA	EMSA
	Reverse	TTTTTATAACACATGTGTATCAG	
DWF1 E-box3 (WT)	Forward	TTTTTATAAAGACAAATGCTCTCAC	
	Reverse	TTTTTGTGAGAGCATTGTCTTTAT	
DWF1 E-box4 (WT)	Forward	TTTTTAAAAATGCAAGTGAAGCAGG	
	Reverse	TTTTTCCTGCTTCACTTGCATTTT	
DWF1 E-box5/6-e (WT)	Forward	TTTTTATATAACACATGTGATTAT	
	Reverse	TTTTTATAAATCACATGTGTATAT	
DWF1 E-box1/2-e (MT)	Forward	TTTTTCTGATAAAAAAAAAATGTATA	
	Reverse	TTTTTATACATTTTTTTTTATCAG	
DWF1 E-box3-e (MT)	Forward	TTTTTATAAAGAAAAAAAACTCTCAC	
	Reverse	TTTTGTGAGAGTTTTTCTTTAT	
DWF1 E-box4-e (MT)	Forward	TTTTTAAAAATGAAAAAAAAAGCAGG	
	Reverse	TTTTTCCTGCTTTTTTTTCATTTT	
DWF1 E-box5/6-e (MT)	Forward	TTTTTATATAAAAAAAAAAATTTAT	
	Reverse	TTTTTATAAATTTTTTTTTTATAT	
UBQ5-q (AT3G62250)	Forward	AAGGCGAAGATCCAAGACAA	qPCR
	Reverse	ACTCCTCCTCAAACGCTGA	
DWF1-q (AT3G19820),	Forward	TCGCAAGGAACCTTGGACT	
	Reverse	AACCACCATCCCACATTGTT	
DWF4-q (AT3G50660),	Forward	CGGAGCAAATTCTCGATCTC	
	Reverse	TCTTTGAGTGCTTTGCGATG	
CPD-q (AT5G05690)	Forward	ATGAAAAGGAGGGAGGAGGA	
	Reverse	GAGAAATTTGACGGCGAGAG	
CYP85A2-q (AT3G30180)	Forward	AAGCCCAACCATGATGAAAG	
	Reverse	GGACCGATAGAGTCCCACA	
DWF1-semi-q (AT3G19820)	Forward	ATGTCGGATCTTCAGACACCGCTTG	Semi qRT-PCR