

Supplementary Material

Absence of alpha-tACS aftereffects in darkness reveals importance of taking derivations of stimulation frequency and individual alpha variability into account

Heiko I. Stecher¹, Christoph S. Herrmann^{1,2*}

¹ Experimental Psychology Lab, Department of Psychology, European Medical School, Cluster for excellence “Hearing for all”, Carl von Ossietzky University, Oldenburg, Germany

² Research Center Neurosensory Science, Carl von Ossietzky University, Oldenburg, Germany

*** Correspondence:**

Prof. Dr. Christoph S. Herrmann

Experimental Psychology Lab,

Carl-von-Ossietzky-Universität Oldenburg,

Ammerländer Heerstraße 114-118,

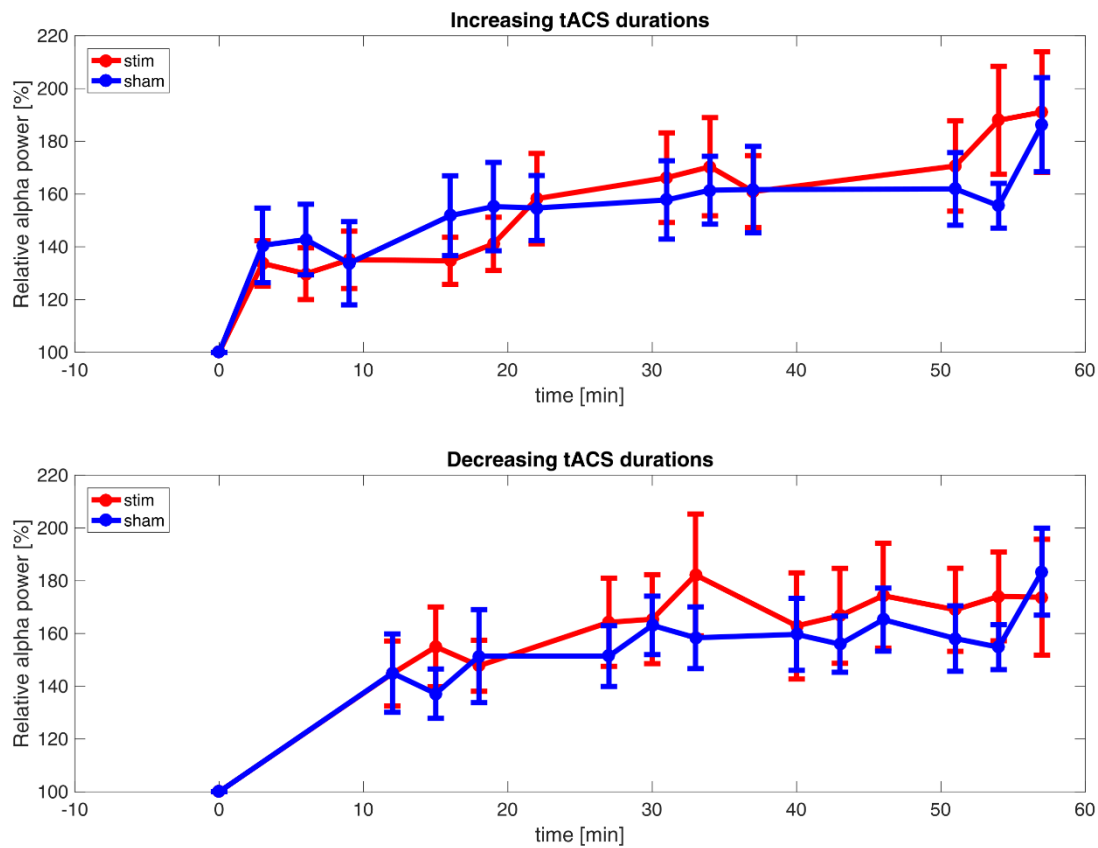
2611 Oldenburg, Germany

Tel.: +49 441 798 4936

Fax: +49 441 798 3865

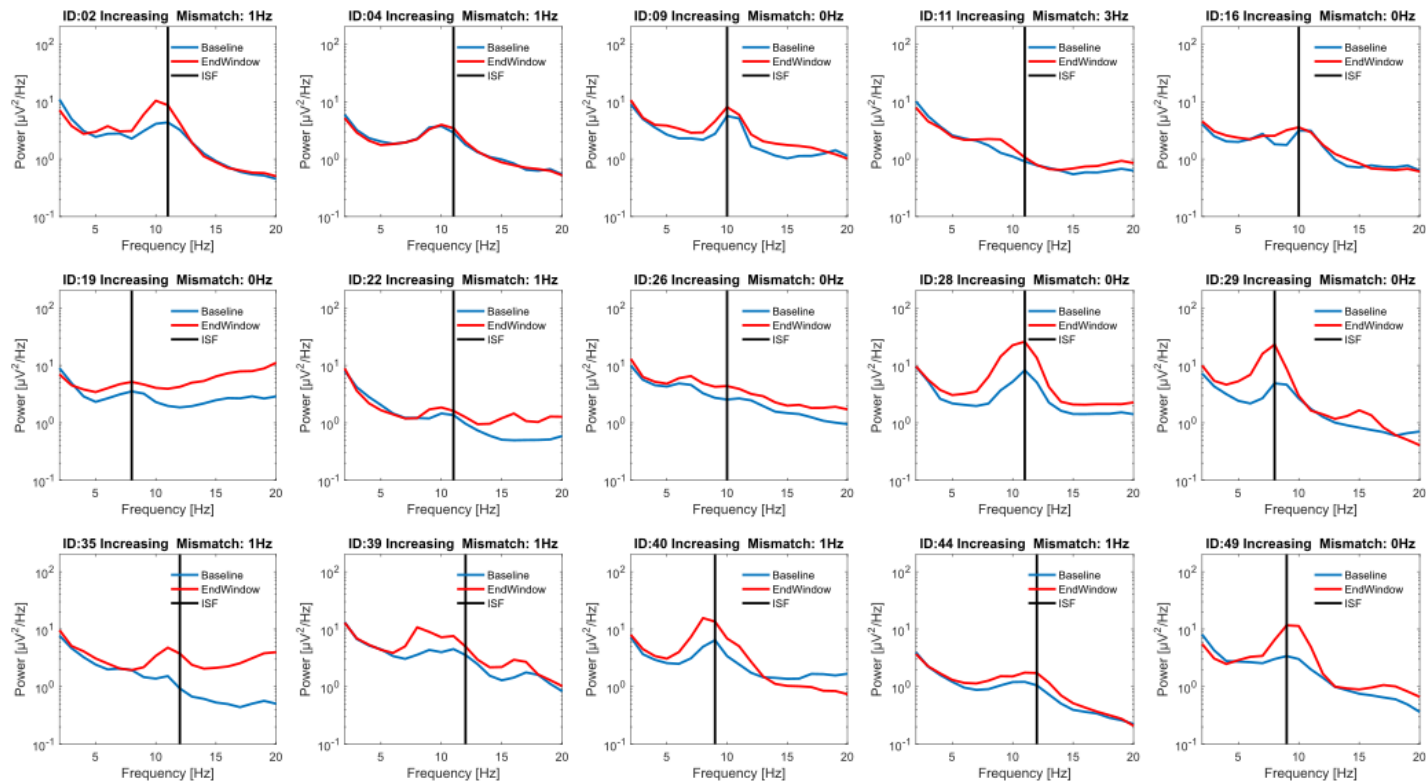
Email: christoph.herrmann@uni-oldenburg.de

1 Supplementary Figures

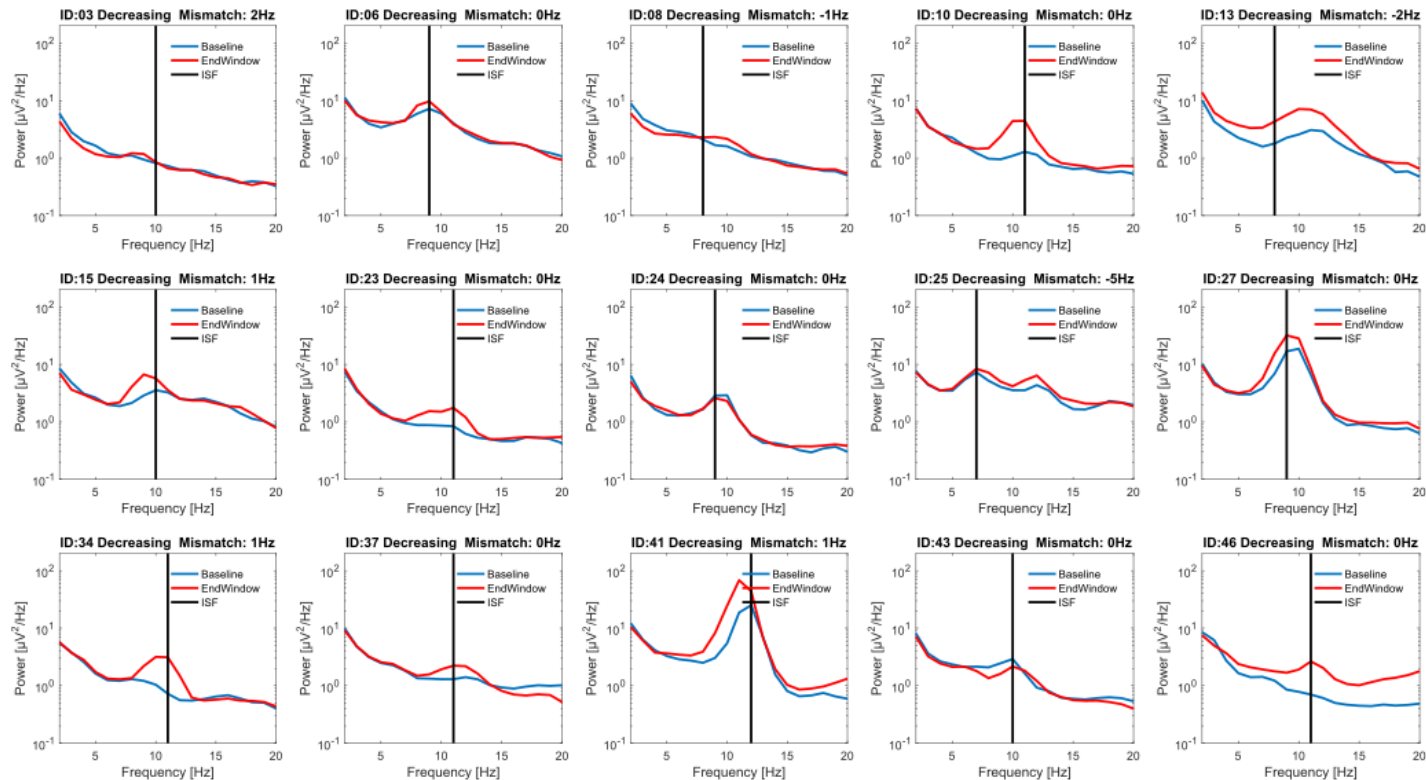


Supplementary Figure 1. Relative parietal α -power post stimulation

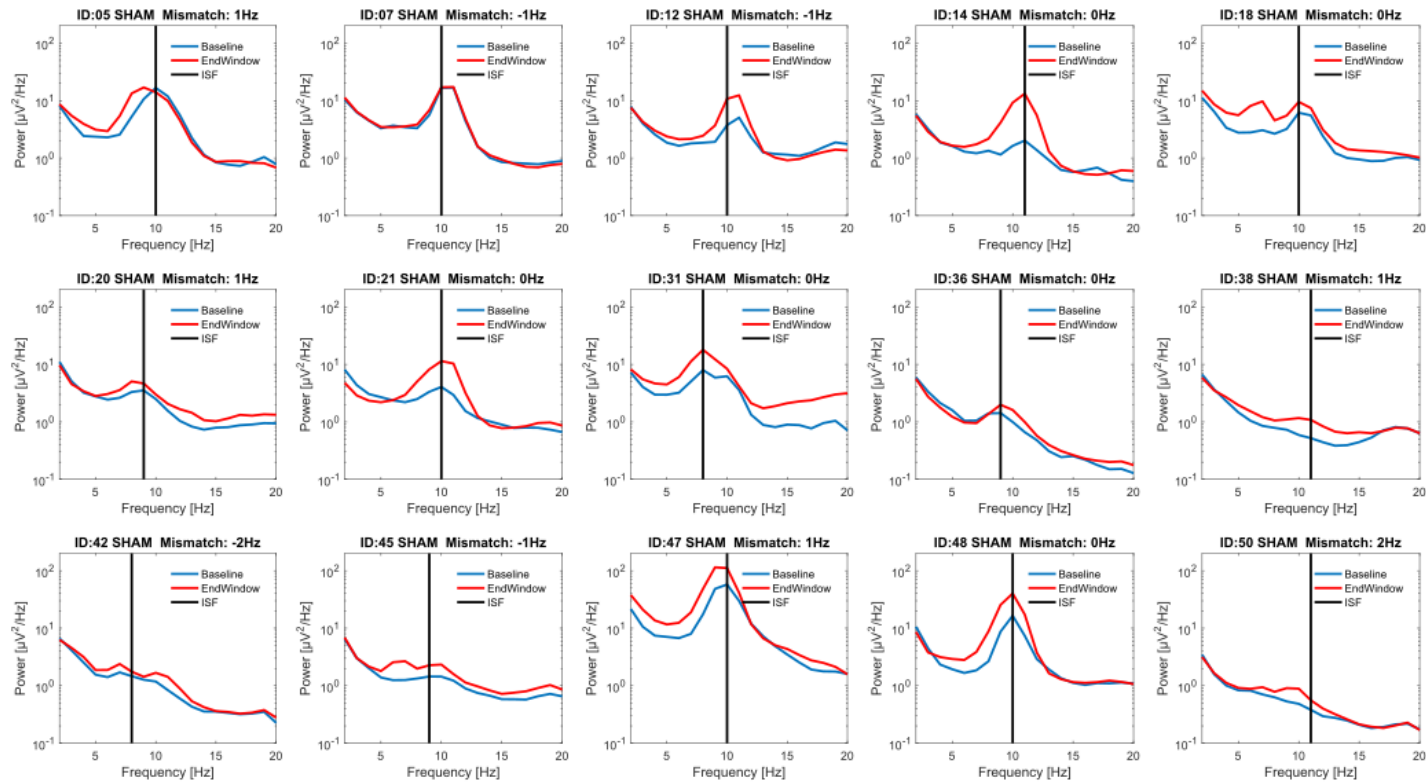
(A) Time-course of α -power relative to baseline, comparing increasing-sequence stimulation group (red) and sham (blue). Each point represents the average power of a 3-min observation window. Error bars depict the standard error of the mean. (B) Time-course of α -power relative to baseline, comparing decreasing-sequence stimulation group (red) and sham (blue): Each point represents the average power of a 3-min observation window. Error bars depict standard error of the mean.



Supplementary Figure 2. Posterior power spectra of all participants of the increasing-stimulation group are shown. The blue lines depict the power in the 3 min baseline before the first stimulation block, the red line depicts the power spectra in the last 9 min of the experiment. The black line marks the Individual stimulation frequency, that was determined before the start of the experiment from a raw 3 min recording of Pz. The mismatch between the IAF peak of the last 9 mine recording and the ISF is given in each subtitle.



Supplementary Figure 3. Posterior power spectra of all participants of the decreasing-stimulation group are shown. The blue lines depict the power in the 3 min baseline before the first stimulation block, the red line depicts the power spectra in the last 9 min of the experiment. The black line marks the Individual stimulation frequency, that was determined before the start of the experiment from a raw 3 min recording of Pz. The mismatch between the IAF peak of the last 9 mine recording and the ISF is given in each subtitle.



Supplementary Figure 4. Posterior power spectra of all participants of the sham-stimulation group are shown. The blue lines depict the power in the 3 min baseline before the first stimulation block, the red line depicts the power spectra in the last 9 min of the experiment. The black line marks the Individual stimulation frequency, that was determined before the start of the experiment from a raw 3 min recording of Pz. The mismatch between the IAF peak of the last 9 mine recording and the ISF is given in each subtitle.