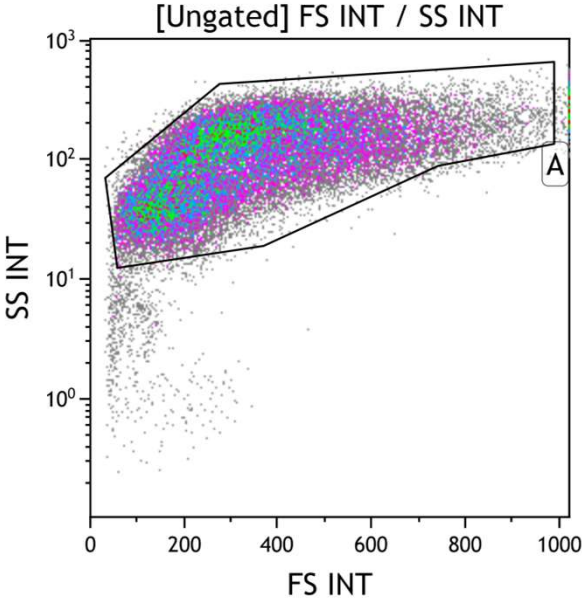
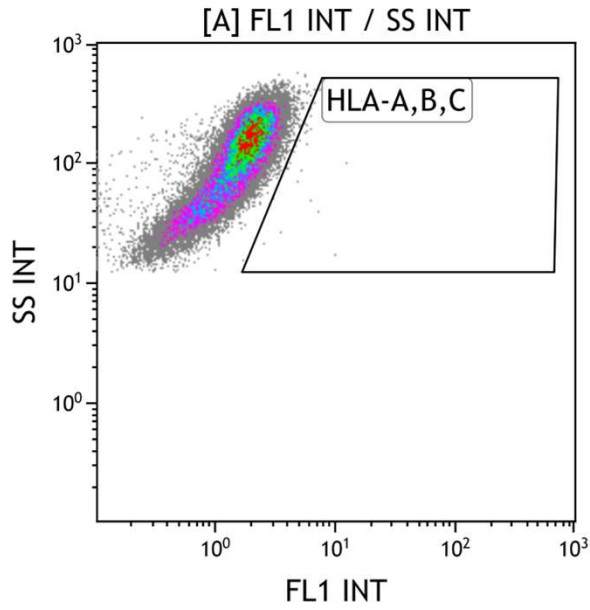


Supplemental Figure 1

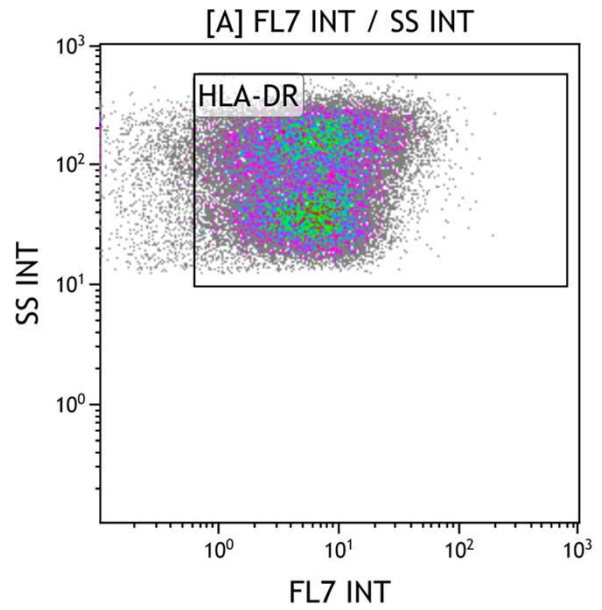
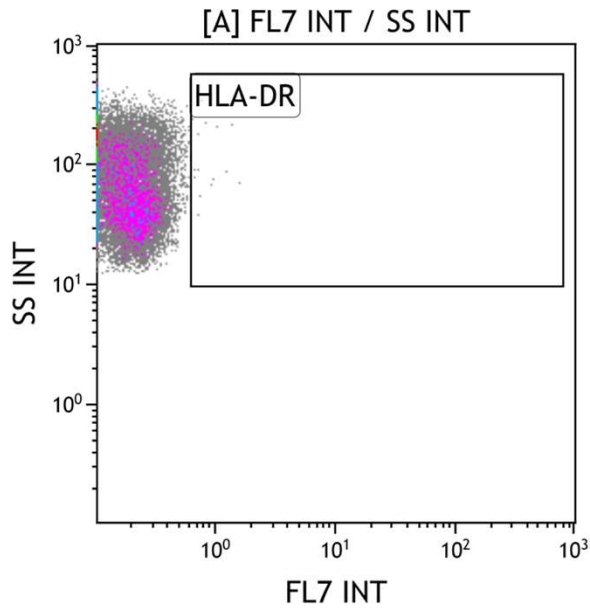
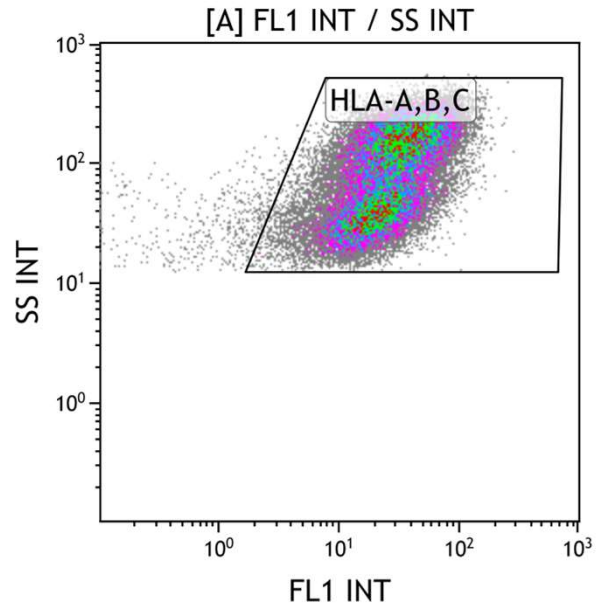


# Supplemental Figure 2

Unstained Fc blocked  
macrophages

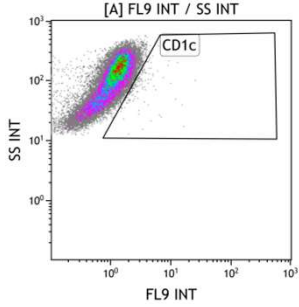
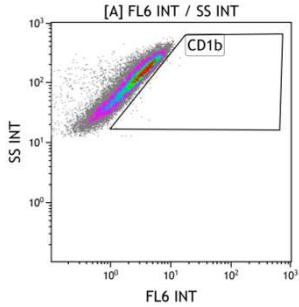
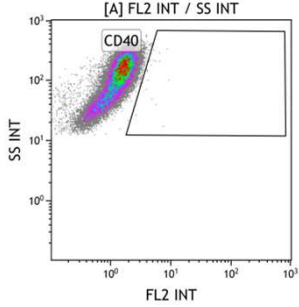
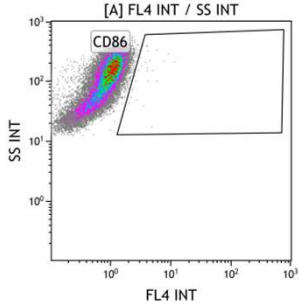
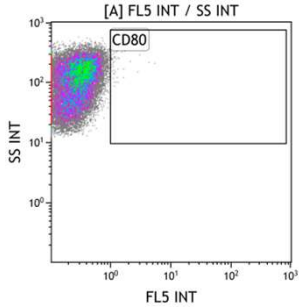


Stained Fc blocked  
macrophages

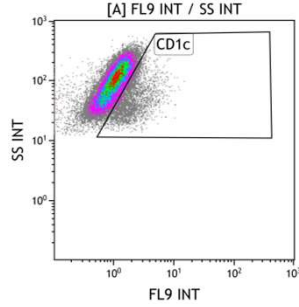
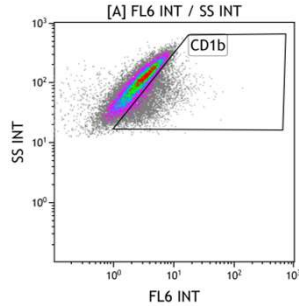
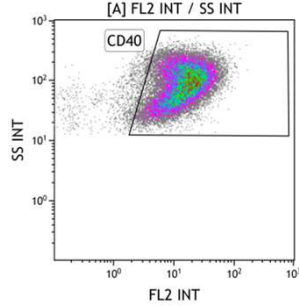
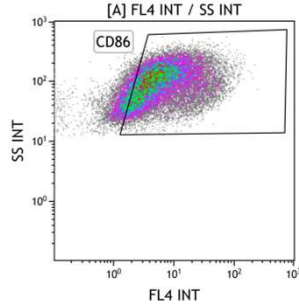
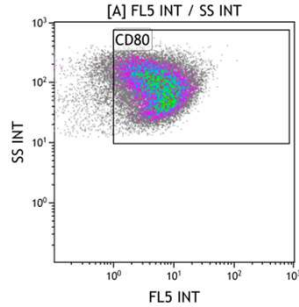


# Supplemental Figure 3

## Unstained Fc blocked macrophages



## Stained Fc blocked macrophages



**Supplemental Table 1**

<b>CD14</b>	<b>Control</b>	<b>HLF 10</b>
<b>IL-12p40</b>	0+/-0	0.25+/-0.87
<b>IL-10</b>	20.33+/-8.32	25.17+/-9.57
<b>TNF-a</b>	2.42+/-3.73	3.33+/-5.12
<b>IL-6</b>	24.58+/-31.51	25.33+/-28.48
<b>IL-1b</b>	0+/-0	0.33+/-1.16
<b>MCP-1</b>	854+/-258	813+/-199
<b>IL-8</b>	737+/-329	651+/-390

**Supplemental Table 1: Effect of lactoferrin to affect naïve CD14<sup>+</sup> macrophages cytokine and chemokine production.** CD14<sup>+</sup> monocyte derived macrophages were cultured with and without recombinant human lactoferrin (HLF, 10µg/mL) for 72 hours. Supernatants were analyzed by ELISA. Data reported as mean +/- standard deviation in pg/mL.

**Supplemental Table 2**

<b>CD16</b>	<b>Control</b>	<b>HLF 10</b>
<b>IL-12p40</b>	0+/-0	0+/-0
<b>IL-10</b>	22.88+/-18.36	15.25+/-6.16
<b>TNF-a</b>	5.13+/-8.04	2.25+/-3.96
<b>IL-6</b>	16.5+/-14.09	17.13+/-14.33
<b>IL-1b</b>	0+/-0	0+/-0
<b>MCP-1</b>	582+/-206	656+/-221 **
<b>IL-8</b>	542+/-438	623+/-505

**Supplemental Table 2: Effect of lactoferrin to affect naïve CD16<sup>+</sup> macrophages cytokine and chemokine production.** CD16<sup>+</sup> monocyte derived macrophages were cultured with and without recombinant human lactoferrin (HLF, 10µg/mL) for 72 hours. Supernatants were analyzed by ELISA. Data reported as mean +/- standard deviation in pg/mL. \*\*=p<0.01

**Supplemental Table 3**

CD14	% Positive Cells		Geometric MFI	
	Control	HLF 10	Control	HLF 10
HLA-A,B,C	99.4+/-0.67	99.49+/-0.69	43.9+/-4.84	44.97+/-6.41
HLA-DR	97.18+/-1.61	97.67+/-1.09	11.98+/-1.32	12.75+/-1.78
CD80	31.69+/-12.55	33.32+/-12.02	2.37+/-0.39	2.29+/-0.38
CD86	67.61+/-6.16	75.6+/-2.51 **	4.85+/-0.14	5.1+/-0.23 *
CD40	50.31+/-9.06	51.99+/-13.68	6.31+/-0.59	6.31+/-0.36
CD1b	5.39+/-2.62	6.14+/-3.28	6.7+/-2.78	6.66+/-2.84
CD1c	2.98+/-3.39	3.9+/-4.82	2.63+/-0.44	2.66+/-0.43

**Supplemental Table 3: Effect of lactoferrin to affect naïve CD14<sup>+</sup> macrophages surface marker expression.** CD14<sup>+</sup> monocyte derived macrophages were cultured with and without recombinant human lactoferrin (10µg/mL) for 72 hours. Cells were collected and analyzed by flow cytometry for surface marker expression. Data reported as mean +/- standard deviation. \*= $p < 0.05$  \*\*= $p < 0.01$

**Supplemental Table 4:**

CD16	% Positive Cells		Geometric MFI	
	Control	HLF 10	Control	HLF 10
HLA-A,B,C	99.52+/-0.58	99.47/-0.77	48.86+/-7.02	50.04+/-8.05
HLA-DR	95.82+/-2.23	95.59+/-1.80	13.92+/-2.67	13.45+/-2.75
CD80	34.60+/-8.18	33.90+/-7.99	2.36+/-0.24	2.28+/-0.25
CD86	70.08+/-10.3	75.47+/-9.29 **	5.09+/-0.70	5.32+/-0.59 **
CD40	49.55+/-4.76	50.31+/-9.39	6.81+/-1.07	6.68+/-0.83
CD1b	7.04+/-1.93	6.14+/-1.34	7.63+/-2.86	7.77+/-3.11
CD1c	1.54+/-1.08	1.25+/-0.79	2.88+/-0.34	2.81+/-0.24

**Supplemental Table 4: Effect of Lactoferrin to affect naïve CD16<sup>+</sup> macrophages surface marker expression.** CD16<sup>+</sup> monocyte derived macrophages were cultured with and without recombinant human lactoferrin (10µg/mL) for 72 hours. Cells were collected and analyzed by flow cytometry for surface marker expression. Data reported as mean +/- standard deviation. \*\*= $p < 0.01$