

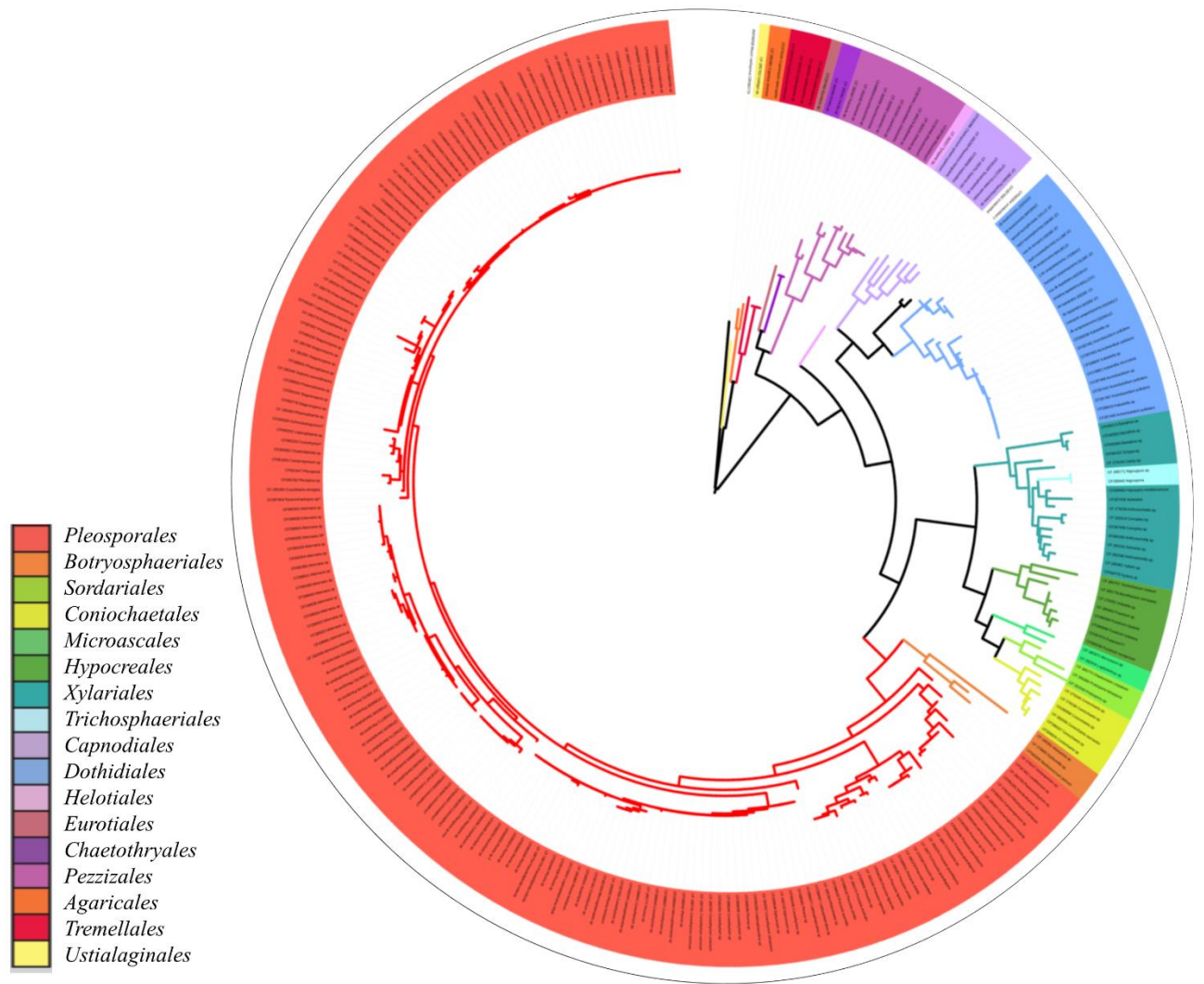
Fungal endophytes from arid areas of Andalusia: high potential sources for antifungal and antitumoral agents

Victor González-Menéndez^{1*}, Gloria Crespo¹, Nuria de Pedro¹, Caridad Diaz¹, Jesús Martín¹, Rachel Serrano¹, Thomas A. Mackenzie¹, Carlos Justicia¹, M. Reyes González-Tejero², M. Casares², Francisca Vicente¹, Fernando Reyes¹, José R. Tormo¹ and Olga Genilloud¹.

¹ Fundación MEDINA, Avda. del conocimiento 34, 18016 Granada, SPAIN

² Departamento de Botánica, Facultad de Farmacia, Universidad de Granada, C/ Prof. Clavera, s/n, 18011, Granada, SPAIN

*victor.gonzalez@medinaandalucia.es



Supplementary Figure 1. Neighbor-joining tree based on nucleotide sequences of 28S rDNA gene of the 349 fungal isolates. Major taxonomic orders are labelled using differential color coding.

Supplementary Table 1. Total list of fungal isolates sort by genus.

Isolate	Genus	Species	Order	Substrate
CF-288903	<i>Alternaria</i>	<i>alternata</i>	<i>Pleosporales</i>	<i>Arthrocnemum macrostachyum</i>
CF-090318	<i>Alternaria</i>	<i>alternata</i>	<i>Pleosporales</i>	<i>Artemisia barrelieri</i>
CF-090322	<i>Alternaria</i>	<i>alternata</i>	<i>Pleosporales</i>	<i>Artemisia barrelieri</i>
CF-090366	<i>Alternaria</i>	<i>cumini</i>	<i>Pleosporales</i>	<i>Sedum sediforme</i>
CF-090246	<i>Alternaria</i>	<i>infectoria</i>	<i>Pleosporales</i>	<i>Genista umbellata</i>
CF-090261	<i>Alternaria</i>	<i>infectoria</i>	<i>Pleosporales</i>	<i>Asparagus horridus</i>
CF-282008	<i>Alternaria</i>	sp.	<i>Pleosporales</i>	<i>Retama sphaerocarpa</i>
CF-288921	<i>Alternaria</i>	sp.	<i>Pleosporales</i>	<i>Ononis tridentata</i>
CF-288922	<i>Alternaria</i>	sp.	<i>Pleosporales</i>	<i>Ononis tridentata</i>
CF-288909	<i>Alternaria</i>	sp.	<i>Pleosporales</i>	<i>Frankenia pulvirulenta</i>
CF-288960	<i>Alternaria</i>	sp.	<i>Pleosporales</i>	<i>Frankenia pulvirulenta</i>
CF-288961	<i>Alternaria</i>	sp.	<i>Pleosporales</i>	<i>Sonchus crassifolius</i>
CF-288939	<i>Alternaria</i>	sp.	<i>Pleosporales</i>	<i>Suaeda vera</i>
CF-288904	<i>Alternaria</i>	sp.	<i>Pleosporales</i>	<i>Arthrocnemum macrostachyum</i>
CF-090752	<i>Alternaria</i>	sp.	<i>Pleosporales</i>	<i>Thymelaea hirsuta</i>
CF-090365	<i>Alternaria</i>	sp.	<i>Pleosporales</i>	<i>Sedum sediforme</i>
CF-090395	<i>Alternaria</i>	sp.	<i>Pleosporales</i>	<i>Arthrocnemum macrostachyum</i>
CF-090254	<i>Alternaria</i>	sp.	<i>Pleosporales</i>	<i>Asparagus horridus</i>
CF-282338	<i>Anthostomella</i>	sp.	<i>Xylariales</i>	<i>Dittrichia viscosa</i>
CF-090350	<i>Anthostomella</i>	sp.	<i>Xylariales</i>	<i>Pinus halepensis</i>
CF-279248	<i>Anthostomella</i>	sp.	<i>Xylariales</i>	<i>Retama sphaerocarpa</i>
CF-287454	<i>Ascochyta</i>	sp.	<i>Pleosporales</i>	<i>Rosmarinus eriocalyx</i>
CF-287439	<i>Ascochyta</i>	sp.	<i>Pleosporales</i>	<i>Ononis fruticosa</i>
CF-282337	<i>Ascochyta</i>	sp.	<i>Pleosporales</i>	<i>Dittrichia viscosa</i>
CF-090376	<i>Ascochyta</i>	sp.	<i>Pleosporales</i>	<i>Ballota hirsuta</i>
CF-090372	<i>Ascochyta</i>	sp.	<i>Pleosporales</i>	<i>Sedum sediforme</i>
CF-285758	<i>Ascochyta</i>	sp.	<i>Pleosporales</i>	<i>Frankenia corymbosa</i>
CF-285355	<i>Ascochyta</i>	sp.	<i>Pleosporales</i>	<i>Asparagus horridus</i>
CF-285366	<i>Ascochyta</i>	sp.	<i>Pleosporales</i>	<i>Rosmarinus eriocalyx</i>
CF-287450	<i>Ascochyta</i>	sp.	<i>Pleosporales</i>	<i>Rosmarinus eriocalyx</i>
CF-287451	<i>Ascochyta</i>	sp.	<i>Pleosporales</i>	<i>Rosmarinus eriocalyx</i>
CF-090321	<i>Ascochyta</i>	sp.	<i>Pleosporales</i>	<i>Artemisia barrelieri</i>
CF-090240	<i>Ascochyta</i>	sp.	<i>Pleosporales</i>	<i>Genista umbellata</i>
CF-090840	<i>Ascochyta</i>	sp.	<i>Pleosporales</i>	<i>Launaea arborescens</i>
CF-091945	<i>Ascochyta</i>	sp.	<i>Pleosporales</i>	<i>Launaea arborescens</i>
CF-091946	<i>Ascochyta</i>	sp.	<i>Pleosporales</i>	<i>Lycium intricatum</i>
CF-090305	<i>Ascochyta</i>	sp.	<i>Pleosporales</i>	<i>Launaea arborescens</i>
CF-090252	<i>Ascochyta</i>	sp.	<i>Pleosporales</i>	<i>Genista umbellata</i>
CF-282009	<i>Ascorhizoctonia</i>	sp.	<i>Pezizales</i>	<i>Dittrichia viscosa</i>
CF-287465	<i>Aureobasidium</i>	<i>pullulans</i>	<i>Dothideales</i>	<i>Genista umbellata</i>
CF-287442	<i>Aureobasidium</i>	<i>pullulans</i>	<i>Dothideales</i>	<i>Ononis fruticosa</i>
CF-288910	<i>Aureobasidium</i>	<i>pullulans</i>	<i>Dothideales</i>	<i>Gypsophila tomentosa</i>
CF-090316	<i>Aureobasidium</i>	<i>pullulans</i>	<i>Dothideales</i>	<i>Artemisia barrelieri</i>
CF-285762	<i>Aureobasidium</i>	<i>pullulans subglaciale</i>	<i>Dothideales</i>	<i>Limbarda crithmoides</i>
CF-287440	<i>Aureobasidium</i>	sp.	<i>Dothideales</i>	<i>Ononis fruticosa</i>
CF-090333	<i>Aureobasidium</i>	sp.	<i>Dothideales</i>	<i>Anthyllis cystisoides</i>
CF-090336	<i>Bactrodesmium</i>	sp.	<i>Incertae sedis</i>	<i>Anthyllis cystisoides</i>
CF-090812	<i>Bartalinia</i>	sp.	<i>Xylariales</i>	<i>Limonium insigne</i>
CF-285376	<i>Basifimbria</i>	sp.	<i>Xylariales</i>	<i>Launaea arborescens</i>
CF-288963	<i>Biscogniauxia</i>	<i>mediterranea</i>	<i>Xylariales</i>	<i>Tamarix canariensis</i>
CF-285367	<i>Boubovia</i>	sp.	<i>Pezizales</i>	<i>Anthyllis temiflora</i>
CF-279249	<i>Cainia</i>	sp.	<i>Xylariales</i>	<i>Retama sphaerocarpa</i>
CF-090379	<i>Camarosporium</i>	sp.	<i>Pleosporales</i>	<i>Ballota hirsuta</i>
CF-090387	<i>Camarosporium</i>	sp.	<i>Pleosporales</i>	<i>Arthrocnemum macrostachyum</i>
CF-285350	<i>Camarosporium</i>	sp.	<i>Pleosporales</i>	<i>Euzomodendron bourgeanum</i>
CF-090314	<i>Camarosporium</i>	sp.	<i>Pleosporales</i>	<i>Artemisia barrelieri</i>
CF-090242	<i>Camarosporium</i>	sp.	<i>Pleosporales</i>	<i>Genista umbellata</i>
CF-285770	<i>Chaetomium</i>	<i>crispatum</i>	<i>Sordariales</i>	<i>Macrosyringium longiflorum</i>

CF-287476	<i>Chaetomium</i>	sp.	Sordariales	<i>Centaurea dracunculifolia</i>
CF-286679	<i>Chaetomium</i>	sp.	Sordariales	<i>Zygophyllum fabago</i>
CF-286682	<i>Chaetothyriales</i>	sp.	<i>Chaetothyriales</i>	<i>Thymelaea hirsuta</i>
CF-091931	<i>Chaetothyriales</i>	sp.	<i>Chaetothyriales</i>	<i>Tamarix canariensis</i>
CF-090214	<i>Coleophoma</i>	<i>cylindrospora</i>	Pleosporales	<i>Ziziphus lotus</i>
CF-282003	<i>Comoclathris</i>	sp.	Pleosporales	<i>Retama sphaerocarpa</i>
CF-091922	<i>Comoclathris</i>	sp.	Pleosporales	<i>Ziziphus lotus</i>
CF-090361	<i>Comoclathris</i>	sp.	Pleosporales	<i>Sedum sediforme</i>
CF-285379	<i>Comoclathris</i>	sp.	Pleosporales	<i>Fagonia cretica</i>
CF-287447	<i>Comoclathris</i>	sp.	Pleosporales	<i>Rosmarinus eriocalyx</i>
CF-090301	<i>Comoclathris</i>	sp.	Pleosporales	<i>Launaea arborescens</i>
CF-091944	<i>Comoclathris</i>	sp.	Pleosporales	<i>Launaea arborescens</i>
CF-090266	<i>Comoclathris</i>	sp.	Pleosporales	<i>Lygeum spartum</i>
CF-090267	<i>Comoclathris</i>	sp.	Pleosporales	<i>Lygeum spartum</i>
CF-090792	<i>Comoclathris</i>	sp.	Pleosporales	<i>Lygeum spartum</i>
CF-091934	<i>Comoclathris</i>	sp.	Pleosporales	<i>Lygeum spartum</i>
CF-090763	<i>Comoclathris</i>	sp.	Pleosporales	<i>Nerium oleander</i>
CF-090766	<i>Comoclathris</i>	sp.	Pleosporales	<i>Nerium oleander</i>
CF-282006	<i>Coniochaeta</i>	<i>saccardoi</i>	Coniochaetales	<i>Retama sphaerocarpa</i>
CF-288927	<i>Coniochaeta</i>	sp.	Coniochaetales	<i>Ononis tridentata</i>
CF-288956	<i>Coniochaeta</i>	sp.	Coniochaetales	<i>Thymus zygis subs gracilis</i>
CF-279239	<i>Coniochaeta</i>	sp.	Coniochaetales	<i>Retama sphaerocarpa</i>
CF-091953	<i>Coniothyrium</i>	sp.	Pleosporales	<i>Anthyllis cystisoides</i>
CF-090330	<i>Coniothyrium</i>	sp.	Pleosporales	<i>Cistus albidus</i>
CF-090362	<i>Coniothyrium</i>	sp.	Pleosporales	<i>Sedum sediforme</i>
CF-285356	<i>Coniothyrium</i>	sp.	Pleosporales	<i>Asparagus horridus</i>
CF-090243	<i>Coniothyrium</i>	sp.	Pleosporales	<i>Genista umbellata</i>
CF-090236	<i>Constantinomyces</i>	sp.	Capnodiales	<i>Suaeda vera</i>
CF-279244	<i>Coprinopsis</i>	<i>episcopalis</i>	Agaricales	<i>Retama sphaerocarpa</i>
CF-285465	<i>Coprinus</i>	<i>cinereus</i>	Agaricales	<i>Salsola genistoides</i>
CF-285748	<i>Filobasidium</i>	<i>chernovii</i>	Tremellales	<i>Beta macrocarpa</i>
CF-285760	<i>Cryptococcus</i>	sp.	Tremellales	<i>Genista umbellata</i>
CF-285750	<i>Cryptococcus</i>	sp.	Tremellales	<i>Centaurea dracunculifolia</i>
CF-285752	<i>Cryptococcus</i>	sp.	Tremellales	<i>Centaurea dracunculifolia</i>
CF-285749	<i>Paradendryphiella</i>	<i>salina</i>	Pleosporales	<i>Centaurea dracunculifolia</i>
CF-091936	<i>Alternaria</i>	<i>penicillata</i>	Pleosporales	<i>Limonium insigne</i>
CF-285362	<i>Dendryphion</i>	sp.	Pleosporales	<i>Asparagus horridus</i>
CF-288958	<i>Devriesia</i>	sp.	Capnodiales	<i>Whitania frutescens</i>
CF-091918	<i>Devriesia</i>	sp.	Capnodiales	<i>Thymelaea hirsuta</i>
CF-091923	<i>Devriesia</i>	sp.	Capnodiales	<i>Nerium oleander</i>
CF-090344	<i>Diaporthe</i>	sp.	Diaporthales	<i>Ononis ramosissima</i>
CF-279247	<i>Dictyosporium</i>	sp.	Pleosporales	<i>Retama sphaerocarpa</i>
CF-288938	<i>Didymella</i>	sp.	Pleosporales	<i>Sonchus crassifolius</i>
CF-090355	<i>Didymella</i>	sp.	Pleosporales	<i>Sedum sediforme</i>
CF-288950	<i>Didymocytris</i>	sp.	Pleosporales	<i>Teucrium capitatum sbsp. gracillium</i>
CF-090768	<i>Dimorphosporicola</i>	sp.	Pleosporales	<i>Suaeda vera</i>
CF-091943	<i>Dimorphosporicola</i>	sp.	Pleosporales	<i>Suaeda vera</i>
CF-090383	<i>Dimorphosporicola</i>	<i>traganii</i>	Pleosporales	<i>Arthrocnemum macrostachyum</i>
CF-090749	<i>Diplodia</i>	sp.	Botryosphaerales	<i>Thymelaea hirsuta</i>
CF-285354	<i>Dothiora</i>	sp.	Dothideales	<i>Moricandia foetida</i>
CF-285353	<i>Dothiora</i>	sp.	Dothideales	<i>Launaea arborescens</i>
CF-285777	<i>Dothiorella</i>	sp.	Botryosphaerales	<i>Teucrium capitatum sbsp. gracillium</i>
CF-278800	<i>Dothiorella</i>	sp.	Botryosphaerales	<i>Dittrichia viscosa</i>
CF-285759	<i>Entodesmium</i>	sp.	Pleosporales	<i>Genista umbellata</i>
CF-288946	<i>Epicoccum</i>	<i>nigrum</i>	Pleosporales	<i>Teucrium capitatum sbsp. gracillium</i>
CF-285743	<i>Epicoccum</i>	sp.	Pleosporales	<i>Atriplex glauca</i>
CF-287460	<i>Eurotium</i>	sp.	Eurotiales	<i>Launaea arborescens</i>
CF-090213	<i>Eutypa</i>	<i>consobriva</i>	Xylariales	<i>Ziziphus lotus</i>
CF-090257	<i>Eutypa</i>	sp.	Xylariales	<i>Asparagus horridus</i>
CF-090782	<i>Foliophoma</i>	sp.	Pleosporales	<i>Asparagus horridus</i>
CF-090384	<i>Fusarium</i>	<i>equiseti</i>	Hypocreales	<i>Arthrocnemum macrostachyum</i>

CF-285462	<i>Fusarium</i>	<i>equiseti</i>	<i>Hypocreales</i>	<i>Salsola genistoides</i>
CF-288908	<i>Fusarium</i>	<i>redolens</i>	<i>Hypocreales</i>	<i>Frankenia pulvirulenta</i>
CF-285764	<i>Fusarium</i>	sp.	<i>Hypocreales</i>	<i>Limonium insigne</i>
CF-287474	<i>Fusarium</i>	sp.	<i>Hypocreales</i>	<i>Asparagus horridus</i>
CF-090256	<i>Fusarium</i>	sp.	<i>Hypocreales</i>	<i>Asparagus horridus</i>
CF-090320	<i>Hazslinszkyomyces</i>	sp.	<i>Pleosporales</i>	<i>Artemisia barrelieri</i>
CF-282335	<i>Homortomyces</i>	<i>tamaricis</i>	<i>Incertae sedis</i>	<i>Dittrichia viscosa</i>
CF-090351	<i>Hormonema</i>	<i>carpetanum</i>	<i>Dothideales</i>	<i>Sedum sediforme</i>
CF-091927	<i>Hormonema</i>	sp.	<i>Dothideales</i>	<i>Genista umbellata</i>
CF-091949	<i>Hormonema</i>	sp.	<i>Dothideales</i>	<i>Rhamnus lycioides</i>
CF-092177	<i>Hortaea</i>	<i>werneckii</i>	<i>Capnodiales</i>	<i>Arthrocnemum macrostachyum</i>
CF-090396	<i>Hortaea</i>	<i>werneckii</i>	<i>Capnodiales</i>	<i>Chamaerops humilis</i>
CF-288947	<i>Kabatiella</i>	sp.	<i>Dothideales</i>	<i>Teucrium capitatum</i> sbsp. <i>gracillium</i>
CF-285359	<i>Kabatiella</i>	sp.	<i>Dothideales</i>	<i>Asparagus horridus</i>
CF-091935	<i>Kabatiella</i>	sp.	<i>Dothideales</i>	<i>Limonium insigne</i>
CF-090299	<i>Kabatiella</i>	sp.	<i>Dothideales</i>	<i>Launaea arborescens</i>
CF-090814	<i>Kabatiella</i>	sp.	<i>Dothideales</i>	<i>Limonium insigne</i>
CF-091181	<i>Kalmusia</i>	sp.	<i>Pleosporales</i>	<i>Asparagus horridus</i>
CF-287452	<i>Keissieriella</i>	sp.	<i>Pleosporales</i>	<i>Rosmarinus eriocalyx</i>
CF-285360	<i>Knufia</i>	sp.	<i>Incertae sedis</i>	<i>Asparagus horridus</i>
CF-285361	<i>Knufia</i>	sp.	<i>Incertae sedis</i>	<i>Asparagus horridus</i>
CF-285464	<i>Lapidomyces</i>	sp.	<i>Capnodiales</i>	<i>Fagonia cretica</i>
CF-090797	<i>Lapidomyces</i>	sp.	<i>Capnodiales</i>	<i>Lygeum spartum</i>
CF-287444	<i>Lasiobolidium</i>	<i>orbiculoides</i>	<i>Pezizales</i>	<i>Otanthus maritimus</i>
CF-279246	<i>Lecythophora</i>	sp.	<i>Coniochaetales</i>	<i>Retama sphaerocarpa</i>
CF-090357	<i>Leptosphaeria</i>	<i>hispanica</i>	<i>Pleosporales</i>	<i>Sedum sediforme</i>
CF-279243	<i>Leptospora</i>	sp.	<i>Incertae sedis</i>	<i>Retama sphaerocarpa</i>
CF-090382	<i>Libertasomyces</i>	sp.	<i>Pleosporales</i>	<i>Ballota hirsuta</i>
CF-092175	<i>Libertasomyces</i>	sp.	<i>Pleosporales</i>	<i>Ballota hirsuta</i>
CF-092176	<i>Libertasomyces</i>	sp.	<i>Pleosporales</i>	<i>Ballota hirsuta</i>
CF-090297	<i>Lophiostoma</i>	sp.	<i>Pleosporales</i>	<i>Thymus hyemalis</i>
CF-090828	<i>Lophiostoma</i>	sp.	<i>Pleosporales</i>	<i>Thymus hyemalis</i>
CF-282004	<i>Lophotrichus</i>	sp.	<i>Microascales</i>	<i>Retama sphaerocarpa</i>
CF-285351	<i>Masarina</i>	sp.	<i>Botryosphaeriales</i>	<i>Ziziphus lotus</i>
CF-285371	<i>Microascus</i>	<i>trigonosporus</i>	<i>Microascales</i>	<i>Anabasis articulata</i>
CF-279241	<i>Coniothyrium</i>	<i>olivaceum</i>	<i>Pleosporales</i>	<i>Retama sphaerocarpa</i>
CF-090371	<i>Morinia</i>	<i>pestalozzioides</i>	<i>Amphisphaeriales</i>	<i>Sedum sediforme</i>
CF-090313	<i>Morinia</i>	sp.	<i>Xylariales</i>	<i>Artemisia barrelieri</i>
CF-285778	<i>Albifimbria</i>	<i>verrucaria</i>	<i>Hypocreales</i>	<i>Thymus hyemalis</i>
CF-282342	<i>Nemania</i>	sp.	<i>Xylariales</i>	<i>Dittrichia viscosa</i>
CF-285348	<i>Neocamarosporium</i>	<i>chicastinanum</i>	<i>Pleosporales</i>	<i>Salsola papillosa</i>
CF-285352	<i>Neocamarosporium</i>	sp.	<i>Pleosporales</i>	<i>Atriplex glauca</i>
CF-285744	<i>Neocamarosporium</i>	sp.	<i>Pleosporales</i>	<i>Atriplex glauca</i>
CF-285745	<i>Neocamarosporium</i>	sp.	<i>Pleosporales</i>	<i>Atriplex glauca</i>
CF-285746	<i>Neocamarosporium</i>	sp.	<i>Pleosporales</i>	<i>Atriplex glauca</i>
CF-285747	<i>Neocamarosporium</i>	sp.	<i>Pleosporales</i>	<i>Beta macrocarpa</i>
CF-288928	<i>Neocamarosporium</i>	sp.	<i>Pleosporales</i>	<i>Salsola vermiculata</i>
CF-288930	<i>Neocamarosporium</i>	sp.	<i>Pleosporales</i>	<i>Salsola vermiculata</i>
CF-288932	<i>Neocamarosporium</i>	sp.	<i>Pleosporales</i>	<i>Salsola vermiculata</i>
CF-288934	<i>Neocamarosporium</i>	sp.	<i>Pleosporales</i>	<i>Salsola vermiculata</i>
CF-285775	<i>Neocamarosporium</i>	sp.	<i>Pleosporales</i>	<i>Suaeda vera</i>
CF-288962	<i>Neocamarosporium</i>	sp.	<i>Pleosporales</i>	<i>Arthrocnemum macrostachyum</i>
CF-090335	<i>Neocamarosporium</i>	sp.	<i>Pleosporales</i>	<i>Anthyllis cystisoides</i>
CF-090390	<i>Neocamarosporium</i>	sp.	<i>Pleosporales</i>	<i>Arthrocnemum macrostachyum</i>
CF-090392	<i>Neocamarosporium</i>	sp.	<i>Pleosporales</i>	<i>Arthrocnemum macrostachyum</i>
CF-090393	<i>Neocamarosporium</i>	sp.	<i>Pleosporales</i>	<i>Arthrocnemum macrostachyum</i>
CF-090394	<i>Neocamarosporium</i>	sp.	<i>Pleosporales</i>	<i>Arthrocnemum macrostachyum</i>
CF-090399	<i>Neocamarosporium</i>	sp.	<i>Pleosporales</i>	<i>Chamaerops humilis</i>
CF-285349	<i>Neocamarosporium</i>	sp.	<i>Pleosporales</i>	<i>Anabasis articulata</i>
CF-285368	<i>Neocamarosporium</i>	sp.	<i>Pleosporales</i>	<i>Anabasis articulata</i>
CF-285372	<i>Neocamarosporium</i>	sp.	<i>Pleosporales</i>	<i>Anabasis articulata</i>

CF-285373	<i>Neocamarosporium</i>	sp.	<i>Pleosporales</i>	<i>Salsola papillosa</i>
CF-285374	<i>Neocamarosporium</i>	sp.	<i>Pleosporales</i>	<i>Salsola papillosa</i>
CF-285377	<i>Neocamarosporium</i>	sp.	<i>Pleosporales</i>	<i>Suaeda vera</i>
CF-090284	<i>Neocamarosporium</i>	sp.	<i>Pleosporales</i>	<i>Salicornia ramossissima</i>
CF-090228	<i>Neocamarosporium</i>	sp.	<i>Pleosporales</i>	<i>Suaeda vera</i>
CF-090759	<i>Neocamarosporium</i>	sp.	<i>Pleosporales</i>	<i>Nerium oleander</i>
CF-090841	<i>Neocamarosporium</i>	sp.	<i>Pleosporales</i>	<i>Salsola genistoides</i>
CF-090842	<i>Neocamarosporium</i>	sp.	<i>Pleosporales</i>	<i>Salsola genistoides</i>
CF-090843	<i>Neocamarosporium</i>	sp.	<i>Pleosporales</i>	<i>Salsola genistoides</i>
CF-090227	<i>Neocamarosporium</i>	sp.	<i>Pleosporales</i>	<i>Suaeda vera</i>
CF-090309	<i>Neocamarosporium</i>	sp.	<i>Pleosporales</i>	<i>Suaeda vera</i>
CF-090312	<i>Neocamarosporium</i>	sp.	<i>Pleosporales</i>	<i>Suaeda vera</i>
CF-090773	<i>Neocamarosporium</i>	sp.	<i>Pleosporales</i>	<i>Genista umbellata</i>
CF-090824	<i>Neocamarosporium</i>	sp.	<i>Pleosporales</i>	<i>Thymus hyemalis</i>
CF-285768	<i>Neocamarosporium</i>	sp.	<i>Pleosporales</i>	<i>Lycium intricatum</i>
CF-287455	<i>Neocamarosporium</i>	sp.	<i>Pleosporales</i>	<i>Lycium intricatum</i>
CF-286681	<i>Neodidymelliopsis</i>	sp.	<i>Pleosporales</i>	<i>Cynanchum acutum</i>
CF-090206	<i>Neofusicoccum</i>	<i>parvum</i>	<i>Botryosphaerales</i>	<i>Ziziphus lotus</i>
CF-090380	<i>Neofusicoccum</i>	sp.	<i>Botryosphaerales</i>	<i>Ballota hirsuta</i>
CF-285742	<i>Neomicrosphaeropsis</i>	sp.	<i>Pleosporales</i>	<i>Arthrocnemum macrostachyum</i>
CF-288941	<i>Neomicrosphaeropsis</i>	sp.	<i>Pleosporales</i>	<i>Tamarix canariensis</i>
CF-288942	<i>Neomicrosphaeropsis</i>	sp.	<i>Pleosporales</i>	<i>Tamarix canariensis</i>
CF-288943	<i>Neomicrosphaeropsis</i>	sp.	<i>Pleosporales</i>	<i>Tamarix canariensis</i>
CF-288907	<i>Neomicrosphaeropsis</i>	sp.	<i>Pleosporales</i>	<i>Frankenia pulvirulenta</i>
CF-285741	<i>Neomicrosphaeropsis</i>	sp.	<i>Pleosporales</i>	<i>Arthrocnemum macrostachyum</i>
CF-288902	<i>Neomicrosphaeropsis</i>	sp.	<i>Pleosporales</i>	<i>Arthrocnemum macrostachyum</i>
CF-090262	<i>Neomicrosphaeropsis</i>	sp.	<i>Pleosporales</i>	<i>Tamarix canariensis</i>
CF-090785	<i>Neomicrosphaeropsis</i>	sp.	<i>Pleosporales</i>	<i>Tamarix canariensis</i>
CF-285767	<i>Neomicrosphaeropsis</i>	sp.	<i>Pleosporales</i>	<i>Lycium intricatum</i>
CF-285780	<i>Neosetophoma</i>	sp.	<i>Pleosporales</i>	<i>Thymelaea hirsuta</i>
CF-288948	<i>Neosetophoma</i>	sp.	<i>Pleosporales</i>	<i>Teucrium capitatum</i> sbsp. <i>gracillium</i>
CF-282001	<i>Neosetophoma</i>	sp.	<i>Pleosporales</i>	<i>Retama sphaerocarpa</i>
CF-285771	<i>Nigrospora</i>	sp.	<i>Incertae sedis</i>	<i>Phragmites australis</i>
CF-288945	<i>Nigrospora</i>	sp.	<i>Incertae sedis</i>	<i>Tamarix canariensis</i>
CF-287449	<i>Orbicula</i>	sp.	<i>Pezizales</i>	<i>Rosmarinus eriocalyx</i>
CF-090248	<i>Paracamarosporium</i>	sp.	<i>Pleosporales</i>	<i>Genista umbellata</i>
CF-285765	<i>Paraconiothyrium</i>	sp.	<i>Pleosporales</i>	<i>Lygeum spartum</i>
CF-282005	<i>Pezizales</i>	sp.	<i>Pezizales</i>	<i>Retama sphaerocarpa</i>
CF-282011	<i>Pezizales</i>	sp.	<i>Pezizales</i>	<i>Dittrichia viscosa</i>
CF-282336	<i>Pezizales</i>	sp.	<i>Pezizales</i>	<i>Dittrichia viscosa</i>
CF-285776	<i>Phaeosphaeria</i>	sp.	<i>Pleosporales</i>	<i>Teucrium capitatum</i> sbsp. <i>gracillium</i>
CF-285779	<i>Phaeosphaeria</i>	sp.	<i>Pleosporales</i>	<i>Thymus zygis</i> subs <i>gracilis</i>
CF-285363	<i>Phaeosphaeria</i>	sp.	<i>Pleosporales</i>	<i>Moricandia foetida</i>
CF-288952	<i>Phaeosphaeria</i>	sp.	<i>Pleosporales</i>	<i>Teucrium capitatum</i> sbsp. <i>gracillium</i>
CF-282010	<i>Phaeosphaeria</i>	sp.	<i>Pleosporales</i>	<i>Dittrichia viscosa</i>
CF-285358	<i>Phaeotheca</i>	<i>triangularis</i>	<i>Capnodiales</i>	<i>Asparagus horridus</i>
CF-278520	<i>Phoma</i>	sp.	<i>Pleosporales</i>	<i>Opuntia ficus-indica</i>
CF-288912	<i>Phoma</i>	sp.	<i>Pleosporales</i>	<i>Gypsophila tomentosa</i>
CF-288915	<i>Phoma</i>	sp.	<i>Pleosporales</i>	<i>Lepidium subulatum</i>
CF-288914	<i>Phoma</i>	sp.	<i>Pleosporales</i>	<i>Lepidium subulatum</i>
CF-288919	<i>Phoma</i>	sp.	<i>Pleosporales</i>	<i>Ononis tridentata</i>
CF-288917	<i>Phoma</i>	sp.	<i>Pleosporales</i>	<i>Lygeum spartum</i>
CF-288953	<i>Phoma</i>	sp.	<i>Pleosporales</i>	<i>Thymus zygis</i> subs <i>gracilis</i>
CF-092178	<i>Phoma</i>	sp.	<i>Pleosporales</i>	<i>Chamaerops humilis</i>
CF-285365	<i>Phoma</i>	sp.	<i>Pleosporales</i>	<i>Rosmarinus eriocalyx</i>
CF-091947	<i>Phoma</i>	sp.	<i>Pleosporales</i>	<i>Suaeda vera</i>
CF-090323	<i>Phoma</i>	sp.	<i>Pleosporales</i>	<i>Artemisia barrelieri</i>
CF-092164	<i>Phoma</i>	sp.	<i>Pleosporales</i>	<i>Lygeum spartum</i>
CF-090291	<i>Phoma</i>	sp.	<i>Pleosporales</i>	<i>Thymus hyemalis</i>
CF-090829	<i>Phoma</i>	sp.	<i>Pleosporales</i>	<i>Thymus hyemalis</i>
CF-090223	<i>Phomopsis</i>	sp.	<i>Diaporthales</i>	<i>Ziziphus lotus</i>

CF-285364	<i>Pleiochaeta</i>	sp.	<i>Incertae sedis</i>	<i>Moricandia foetida</i>
CF-288936	<i>Pleospora</i>	<i>herbarum</i>	<i>Pleosporales</i>	<i>Sonchus crassifolius</i>
CF-285761	<i>Pleospora</i>	<i>herbarum</i>	<i>Pleosporales</i>	<i>Limbarda crithmoides</i>
CF-090249	<i>Pleospora</i>	<i>herbarum</i>	<i>Pleosporales</i>	<i>Genista umbellata</i>
CF-090771	<i>Pleospora</i>	<i>herbarum</i>	<i>Pleosporales</i>	<i>Genista umbellata</i>
CF-090753	<i>Pleospora</i>	sp.	<i>Pleosporales</i>	<i>Ziziphus lotus</i>
CF-090826	<i>Pleospora</i>	sp.	<i>Pleosporales</i>	<i>Thymus hyemalis</i>
CF-091933	<i>Pleospora</i>	sp.	<i>Pleosporales</i>	<i>Lygeum spartum</i>
CF-282343	<i>Podospora</i>	<i>pleiospora</i>	<i>Sordariales</i>	<i>Dittrichia viscosa</i>
CF-285369	<i>Schizothecium</i>	<i>tetrasporum</i>	<i>Sordariales</i>	<i>Anabasis articulata</i>
CF-288933	<i>Preussia</i>	<i>australis</i>	<i>Pleosporales</i>	<i>Salsola vermiculata</i>
CF-285375	<i>Preussia</i>	<i>australis</i>	<i>Pleosporales</i>	<i>Launaea arborescens</i>
CF-091940	<i>Preussia</i>	<i>australis</i>	<i>Pleosporales</i>	<i>Thymus hyemalis</i>
CF-285772	<i>Preussia</i>	<i>grandispora</i>	<i>Pleosporales</i>	<i>Phragmites australis</i>
CF-285773	<i>Preussia</i>	<i>grandispora</i>	<i>Pleosporales</i>	<i>Phragmites australis</i>
CF-090838	<i>Preussia</i>	<i>grandispora</i>	<i>Pleosporales</i>	<i>Launaea arborescens</i>
CF-091941	<i>Preussia</i>	<i>grandispora</i>	<i>Pleosporales</i>	<i>Thymus hyemalis</i>
CF-282339	<i>Preussia</i>	<i>lignicola</i>	<i>Pleosporales</i>	<i>Dittrichia viscosa</i>
CF-090241	<i>Preussia</i>	<i>lignicola</i>	<i>Pleosporales</i>	<i>Genista umbellata</i>
CF-090293	<i>Preussia</i>	<i>lignicola</i>	<i>Pleosporales</i>	<i>Thymus hyemalis</i>
CF-285357	<i>Preussia</i>	<i>similis</i>	<i>Pleosporales</i>	<i>Asparagus horridus</i>
CF-288918	<i>Preussia</i>	sp.	<i>Pleosporales</i>	<i>Lygeum spartum</i>
CF-288931	<i>Preussia</i>	sp.	<i>Pleosporales</i>	<i>Salsola vermiculata</i>
CF-288906	<i>Preussia</i>	sp.	<i>Pleosporales</i>	<i>Arthrocnemum macrostachyum</i>
CF-279766	<i>Preussia</i>	sp.	<i>Pleosporales</i>	<i>Retama sphaerocarpa</i>
CF-287459	<i>Preussia</i>	sp.	<i>Pleosporales</i>	<i>Launaea arborescens</i>
CF-285370	<i>Preussia</i>	sp.	<i>Pleosporales</i>	<i>Anabasis articulata</i>
CF-285378	<i>Preussia</i>	sp.	<i>Pleosporales</i>	<i>Salsola oppositifolia</i>
CF-090835	<i>Preussia</i>	sp.	<i>Pleosporales</i>	<i>Thymus hyemalis</i>
CF-090338	<i>Pseudocamarosporium</i>	sp.	<i>Pleosporales</i>	<i>Anthyllis cystisoides</i>
CF-285347	<i>Pseudocamarosporium</i>	sp.	<i>Pleosporales</i>	<i>Helianthemum almeriense</i>
CF-090324	<i>Pseudocamarosporium</i>	sp.	<i>Pleosporales</i>	<i>Artemisia barrelieri</i>
CF-285753	<i>Pseudodiplodia</i>	<i>ruticola</i>	<i>Botryosphaerales</i>	<i>Cynanchum acutum</i>
CF-285754	<i>Pseudodiplodia</i>	<i>ruticola</i>	<i>Botryosphaerales</i>	<i>Cynanchum acutum</i>
CF-285755	<i>Pseudodiplodia</i>	<i>ruticola</i>	<i>Botryosphaerales</i>	<i>Cynanchum acutum</i>
CF-285756	<i>Pseudodiplodia</i>	sp.	<i>Botryosphaerales</i>	<i>Cynanchum acutum</i>
CF-279245	<i>Pseudopithomyces</i>	<i>chartarum</i>	<i>Pleosporales</i>	<i>Retama sphaerocarpa</i>
CF-287448	<i>Pseudoseptoria</i>	<i>obscura</i>	<i>Dothideales</i>	<i>Rosmarinus eriocalyx</i>
CF-281030	<i>Pulvinula</i>	sp.	<i>Pezizales</i>	<i>Retama sphaerocarpa</i>
CF-287464	<i>Pyrenochaeta</i>	sp.	<i>Pleosporales</i>	<i>Genista umbellata</i>
CF-090337	<i>Rhizoctonia</i>	sp.	<i>Cantharellales</i>	<i>Anthyllis cystisoides</i>
CF-287466	<i>Rosellinia</i>	sp.	<i>Xylariales</i>	<i>Artemisia barrelieri</i>
CF-285766	<i>Sclerostagonospora</i>	sp.	<i>Pleosporales</i>	<i>Lygeum spartum</i>
CF-090364	<i>Seiridium</i>	sp.	<i>Amphisphaerales</i>	<i>Sedum sediforme</i>
CF-285463	<i>Selenophoma</i>	<i>juncea</i>	<i>Dothideales</i>	<i>Salsola oppositifolia</i>
CF-285774	<i>Selenophoma</i>	<i>juncea</i>	<i>Dothideales</i>	<i>Salsola oppositifolia</i>
CF-277101	<i>Selenophoma</i>	sp.	<i>Dothideales</i>	<i>Spartium junceum</i>
CF-090317	<i>Selenophoma</i>	sp.	<i>Dothideales</i>	<i>Artemisia barrelieri</i>
CF-285346	<i>Septoria</i>	<i>arundinacea</i>	<i>Capnodiales</i>	<i>Phragmites australis</i>
CF-285751	<i>Septoria</i>	sp.	<i>Capnodiales</i>	<i>Centaurea dracunculifolia</i>
CF-090353	<i>Lepteutypa</i>	<i>cupressi</i>	<i>Xylariales</i>	<i>Sedum sediforme</i>
CF-287457	<i>Setomelanomma</i>	sp.	<i>Pleosporales</i>	<i>Lycium intricatum</i>
CF-288954	<i>Sordaria</i>	sp.	<i>Sordariales</i>	<i>Thymus zygis subs gracilis</i>
CF-090778	<i>Stagnospora</i>	sp.	<i>Pleosporales</i>	<i>Asparagus horridus</i>
CF-281556	<i>Stagnospora</i>	sp.	<i>Pleosporales</i>	<i>Stipa tenacissima</i>
CF-090378	<i>Stagnospora</i>	sp.	<i>Pleosporales</i>	<i>Ballota hirsuta</i>
CF-090359	<i>Stagnospora</i>	sp.	<i>Pleosporales</i>	<i>Sedum sediforme</i>
CF-090235	<i>Stagnospora</i>	sp.	<i>Pleosporales</i>	<i>Suaeda vera</i>
CF-090258	<i>Stagnospora</i>	sp.	<i>Pleosporales</i>	<i>Asparagus horridus</i>
CF-090776	<i>Stemphylium</i>	sp.	<i>Pleosporales</i>	<i>Genista umbellata</i>
CF-090346	<i>Stemphylium</i>	sp.	<i>Pleosporales</i>	<i>Ononis ramosissima</i>

CF-090850	<i>Stemphylium</i>	sp.	<i>Pleosporales</i>	<i>Ononis ramosissima</i>
CF-090781	<i>Stemphylium</i>	sp.	<i>Pleosporales</i>	<i>Asparagus horridus</i>
CF-090250	<i>Stemphylium</i>	sp.	<i>Pleosporales</i>	<i>Genista umbellata</i>
CF-090279	<i>Tamaricicola</i>	sp.	<i>Pleosporales</i>	<i>Limonium insigne</i>
CF-288916	<i>Tamaricicola</i>	sp.	<i>Pleosporales</i>	<i>Limonium majus</i>
CF-288959	<i>Tamaricicola</i>	sp.	<i>Pleosporales</i>	<i>Limonium majus</i>
CF-091926	<i>Teratosphaeria</i>	sp.	<i>Capnodiales</i>	<i>Genista umbellata</i>
CF-090304	<i>Teratosphaeria</i>	sp.	<i>Capnodiales</i>	<i>Launaea arborescens</i>
CF-287456	<i>Teratosphaeria</i>	sp.	<i>Capnodiales</i>	<i>Lycium intricatum</i>
CF-091928	<i>Toxicocladosporium</i>	sp.	<i>Capnodiales</i>	<i>Asparagus horridus</i>
CF-277739	<i>Trichothecium</i>	<i>roseum</i>	<i>Hypocreales</i>	<i>Retama sphaerocarpa</i>
CF-285757	<i>Trichothecium</i>	<i>roseum</i>	<i>Hypocreales</i>	<i>Dorycnium pentaphyllum</i>
CF-282017	<i>Tympanis</i>	sp.	<i>Helotiales</i>	<i>Juniperus oxycedrus</i>
CF-290943	<i>Unidentified</i>	Fungus	<i>not determined</i>	<i>Genista umbellata</i>
CF-290928	<i>Unidentified</i>	Fungus	<i>not determined</i>	<i>Limodorum abortivum</i>
CF-290929	<i>Unidentified</i>	Fungus	<i>not determined</i>	<i>Limodorum abortivum</i>
CF-290937	<i>Unidentified</i>	Fungus	<i>not determined</i>	<i>Retama sphaerocarpa</i>
CF-287441	<i>Unidentified</i>	Fungus	<i>not determined</i>	<i>Ononis fruticosa</i>
CF-288924	<i>Unidentified</i>	Fungus	<i>not determined</i>	<i>Ononis tridentata</i>
CF-288925	<i>Unidentified</i>	Fungus	<i>not determined</i>	<i>Ononis tridentata</i>
CF-287475	<i>Unidentified</i>	Fungus	<i>not determined</i>	<i>Centaurea dracunculifolia</i>
CF-090748	<i>Unidentified</i>	Fungus	<i>not determined</i>	<i>Thymelaea hirsuta</i>
CF-090210	<i>Unidentified</i>	Fungus	<i>not determined</i>	<i>Ziziphus lotus</i>
CF-090222	<i>Unidentified</i>	Fungus	<i>not determined</i>	<i>Ziziphus lotus</i>
CF-090758	<i>Unidentified</i>	Fungus	<i>not determined</i>	<i>Ziziphus lotus</i>
CF-282344	<i>Unidentified</i>	Fungus	<i>not determined</i>	<i>Dittrichia viscosa</i>
CF-092179	<i>Unidentified</i>	Fungus	<i>not determined</i>	<i>Nicotiana glauca</i>
CF-091954	<i>Unidentified</i>	Fungus	<i>not determined</i>	<i>Ononis ramosissima</i>
CF-091948	<i>Unidentified</i>	Fungus	<i>not determined</i>	<i>Cistus albidus</i>
CF-287472	<i>Unidentified</i>	Fungus	<i>not determined</i>	<i>Asparagus horridus</i>
CF-090273	<i>Unidentified</i>	Fungus	<i>not determined</i>	<i>Limonium insigne</i>
CF-091924	<i>Unidentified</i>	Fungus	<i>not determined</i>	<i>Nerium oleander</i>
CF-091929	<i>Unidentified</i>	Fungus	<i>not determined</i>	<i>Tamarix canariensis</i>
CF-285763	<i>Ustilago</i>	sp.	<i>Ustilaginales</i>	<i>Launaea arborescens</i>
CF-090221	<i>Verrucocladosporium</i>	sp.	<i>Capnodiales</i>	<i>Ziziphus lotus</i>
CF-279251	<i>Volutella</i>	sp.	<i>Hypocreales</i>	<i>Retama sphaerocarpa</i>
CF-288937	<i>Xenodidymella</i>	sp.	<i>Pleosporales</i>	<i>Sonchus crassifolius</i>
CF-288955	<i>Xenodidymella</i>	sp.	<i>Pleosporales</i>	<i>Thymus zygis subs gracilis</i>
CF-288957	<i>Xenodidymella</i>	sp.	<i>Pleosporales</i>	<i>Thymus zygis subs gracilis</i>
CF-090345	<i>Xenodidymella</i>	sp.	<i>Pleosporales</i>	<i>Ononis ramosissima</i>
CF-092173	<i>Xenodidymella</i>	sp.	<i>Pleosporales</i>	<i>Ballota hirsuta</i>
CF-290936	<i>Xylaria</i>	sp.	<i>Xylariales</i>	<i>Retama sphaerocarpa</i>
CF-286680	<i>Xylaria</i>	sp.	<i>Xylariales</i>	<i>Lygeum spartum</i>
CF-287438	<i>Xylaria</i>	sp.	<i>Xylariales</i>	<i>Ononis fruticosa</i>
CF-091951	<i>Xylaria</i>	sp.	<i>Xylariales</i>	<i>Rhamnus lycioides</i>
CF-285461	<i>Xylaria</i>	sp.	<i>Xylariales</i>	<i>Thymelaea hirsuta</i>
CF-090770	<i>Xylaria</i>	sp.	<i>Xylariales</i>	<i>Genista umbellata</i>

Supplementary Table 2. Fungal strains included in the phylogenetic analysis (**newly isolated strains** from plants collected in arid zones of Andalucía are **in bold**).

Species	Strain code ^a	Substrate	Origin	Genbank accession numbers ^b	
				ITS	28S
Cryptococcus sp.	CF-285748	Beta macrocarpa	El Margen salt marsh, Granada, Spain	MG065727	
Coniothyrium sp.	CF-091953	Anthyllis cihroides	Sierra Alhamilla, Almeria, Spain	MG065728	
Coniothyrium sp.	CF-090243	Genista umbellata	Tabernas desert, Almeria, Spain	MG065729	
<i>Coniothyrium palmarum</i>	CBS 400.71	<i>Chamaerops humilis</i>	Italy	AY720708	JX681084
<i>Coniothyrium carteri</i>	CBS 105.91	<i>Quercus robur</i>	Germany	JF740181	KF251712
Coniothyrium sp.	CF-090330	Cistus albidus	Sierra Alhamilla, Almeria, Spain	MG065730	
Coniothyrium sp.	CF-090362	Sedum sediforme	Sierra Alhamilla, Almeria, Spain	MG065731	
<i>Coniothyrium multiporum</i>	CBS 353.65	saline soil	India	JF740187	JF740268
<i>Coniothyrium telephii</i>	CBS 188.71	air	Filand	JF740188	GQ387599
<i>Fungal endophyte</i>	SNP 431	<i>Parkinsonia microphylla</i>	Saguaro National Park, Arizona, USA	KP335607	
Coniothyrium sp.	CF-285356	Asparagus horridus	Tabernas desert, Almeria, Spain	MG065732	
<i>Hazslinszkyomyces aloes</i>	CBS 136437	<i>Aloe dichotoma</i>	Western Cape Province, South Africa	KF777142	
Hazslinszkyomyces sp.	CF-090320	Artemisia sp.	Tabernas desert, Almeria, Spain	MG065733	
<i>Coniothyria agaves</i>	CBS 470.69	<i>Agave americana</i>	El Arenal, Mallorca, Spain	JX681075	
<i>Neophaeosphaeria filamentosa</i>	CBS 102202	<i>Yucca rostrata</i>	Mexico	JF740259	GQ387577
<i>Camarosporium arezzoensis</i>	MFLUCC 14-0238	<i>Cytisus sp.</i>	Italy	KP120926	KP120927
<i>Camarosporium aureum</i>	MFLUCC 14-0620	<i>Cotinus coggygria</i>	Russia	KP744436	KP744478
<i>Camarosporium robinicola</i>	MFLUCC 13-0527	<i>Robinia pseudoacacia</i>	Italy	KJ562214	KJ589412
<i>Camarosporium uniseriatum</i>	MFLUCC 15-0444	<i>Celtis occidentalis</i>	Russia	KU697613	KU697614
Camarosporium sp.	CF-285350	Euzomodendron bourgeanum	Tabernas desert, Almeria, Spain	MG065734	
<i>Camarosporium spartii</i>	MFLUCC 13-0548	<i>Cytisus sp.</i>	Italy	KJ562215	KJ589413
<i>Camarosporium clematidis</i>	MFLUCC 13-0336	<i>Clematis vitalba</i>	Italy	KJ562213	
<i>Fungal endophyte</i>	SNP 009	<i>Larrea tridentata</i>	Saguaro National Park, Arizona, USA	KP335215	
Pseudocamarosporium sp.	CF-285347	Helianthemum almeriense	Tabernas desert, Almeria, Spain	MG065735	
<i>Pseudocamarosporium propinquum</i>	MFLUCC 13-0544	<i>Salix sp.</i>	Italy	KJ747049	KJ813280
<i>Pseudocamarosporium loniceræ</i>	MFLUCC 13-0532	<i>Lonicera sp.</i>	Italy	KJ747047	KJ813278
<i>Pseudocamarosporium piceae</i>	MFLUCC 14-0192	<i>Picea excels</i>	Italy	KJ747046	KJ803030
<i>Pseudocamarosporium tilicola</i>	MFLUCC 13-0550	<i>Pinus nigra</i>	Italy	KJ747050	KJ813281
<i>Pseudocamarosporium corni</i>	MFLUCC 13-0541	<i>Cornus sanguinea</i>	Italy	KJ747048	KJ813279
Pseudocamarosporium sp.	CF-090324	Artemisia sp.	Tabernas desert, Almeria, Spain	MG065736	
Pseudocamarosporium sp.	CF-090338	Anthyllis cihroides	Sierra Alhamilla, Almeria, Spain	MG065737	
<i>Camarosporium brabeji</i>	CBS 123026	<i>Protea sp.</i>	South Africa	EU552105	
<i>Paracamarosporium hawaiiensis</i>	CBS 1200225	<i>Sophora chrysophylla</i>	Hawaii, USA	DQ885897	
<i>Paracamarosporium psoraleae</i>	CBS 136628	<i>Psoralea pinnata</i>	Western Cape Province, South Africa	KF777143	KF777199
Paracamarosporium sp.	CF-090248	Genista umbellata	Tabernas desert, Almeria, Spain	MG065738	

<i>Paramarosporium leucadendri</i>	CBS 123027	<i>Brabejum stellatifolium</i>	South Africa	EU552106
<i>Paracamarosporium tamaricis</i>	MFLUCC 15-0495	<i>Tamarix gallica</i>	Italy	KU900327 KU900299
<i>Paracamarosporium fagi</i>	CPC 24892	<i>Fagus sylvatica</i>	Germany	KR611887 KR611905
<i>Fungal endophyte</i>	SNP 291	<i>Parkinsonia microphylla</i>	Saguaro National Park, Arizona, USA	KP335478
<i>Fungal sp.</i>	ARIZ AZ0149	<i>Juniperus deppeana</i>	Coronado National Forest, Arizona, USA	HM122902
<i>Camarosporium sp.</i>	CF-090314	<i>Artemisia barrelieri</i>	Tabernas desert, Almeria, Spain	MG065739
<i>Kalmusia sarothamni</i>	CBS 113833	<i>Cytisus sarothamni</i>	Sweden	KF796675 KF796671
<i>Kalmusia sp.</i>	CF-091181	<i>Asparagus horridus</i>	Tabernas desert, Almeria, Spain	MG065740
<i>Kalmusia variispora</i>	95SA2	<i>Quercus brantii</i>	Iran	KY783414 KY825094
<i>Kalmusia ebuli</i>	CBS 123120	<i>Populus tremula</i>	France	KF796674
<i>Kalmusia italica</i>	MFLUCC 13-0066	<i>Spartium junceum</i>	Italy	KP325440 KP325441
<i>Fungal sp.</i>	ARIZ AZ0553	<i>Juniperus deppeana</i>	Coronado National Forest, Arizona, USA	HM123272
<i>Fungal sp.</i>	ARIZ AZ0644	<i>Quercus rugosa</i>	Coronado National Forest, Arizona, USA	HM123362
<i>Xenodidymella applanata</i>	CBS 102634	<i>Rubus idaeus</i>	Netherlands	GU237726 GU237997
<i>Xenodidymella sp.</i>	CF-092173	<i>Bellota hirsuta</i>	Sierra Alhamilla, Almeria, Spain	MG065741
<i>Xenodidymella sp.</i>	CF-090345	<i>Onoris ramosissima</i>	Sierra Alhamilla, Almeria, Spain	MG065742
<i>Xenodidymella sp.</i>	CF-288955	<i>Thymus zygis subs gracillis</i>	El Margen salt marsh, Granada	MG065743
<i>Xenodidymella sp.</i>	CF-288937	<i>Sonchus crassifolius</i>	El Margen salt marsh, Granada	MG065744
<i>Neodidymelliopsis cannabis</i>	CBS 121.75	<i>Urtica dioica</i>	Netherlands	GU237761 GU237972
<i>Neodidymelliopsis xanthina</i>	CBS 383.68	<i>Delphinium sp.</i>	Netherlands	NR_135994 GU238157
<i>Neodidymelliopsis sp.</i>	CF-286681	<i>Cynanchum acutum</i>	El Margen salt marsh, Granada	MG065745
<i>Microsphaeropsis olivacea</i>	CBS 303.68	<i>Ligustrum vulgare</i>	Netherlands	JX681101
<i>Boeremia exigua var exigua</i>	CBS 431.74	<i>Solanum tuberosum</i>	Netherlands	FJ427001 JX681074
<i>Neomicrosphaeropsis sp.</i>	CF-090262	<i>Tamarix canariensis</i>	Tabernas desert, Almeria, Spain	MG065746
<i>Neomicrosphaeropsis sp.</i>	CF-288942	<i>Tamarix canariensis</i>	El Margen salt marsh, Granada	MG065747
<i>Neomicrosphaeropsis sp.</i>	CF-090785	<i>Tamarix canariensis</i>	Tabernas desert, Almeria, Spain	MG065748
<i>Neomicrosphaeropsis tamaricicola</i>	MFLUCC 14-0443	<i>Tamarix gallica</i>	Italy	KU900322 KU729851
<i>Neomicrosphaeropsis sp.</i>	CF-288902	<i>Arthrocnemum macrostachyum</i>	El Margen salt marsh, Granada	MG065749
<i>Neomicrosphaeropsis sp.</i>	CF-285742	<i>Arthrocnemum macrostachyum</i>	El Margen salt marsh, Granada	MG065750
<i>Neomicrosphaeropsis sp.</i>	CF-288907	<i>Frankenia pulvirulenta</i>	El Margen salt marsh, Granada	MG065751
<i>Neomicrosphaeropsis sp.</i>	CF-285767	<i>Lycium intricatum</i>	Torre Garcia, Almeria, Spain	MG065752
<i>Didymella exigua</i>	CBS 183.55	<i>Rumex arifolius</i>	France	NR_135936 EU754155
<i>Didymella sp.</i>	CF-288938	<i>Sonchus crassifolius</i>	El Margen salt marsh, Granada	MG065753
<i>Ascochyta medicaginicola</i>	CBS 533.66	<i>Medicago sativa</i>	Netherlands	EU167575
<i>Leptosphaerulina australis</i>	CBS 317.83	<i>Eugenia aromatica</i>	Indonesia	GU237829 EU754166
<i>Leptosphaerulina australis</i>	NBRC 33240	house dust	Japan	NBRC33240
<i>Leptosphaerulina trifolii</i>	NBRC 7250	-	-	NBRC7250
<i>Leptosphaerulina argentinensis</i>	CBS 569.94	<i>Lonicera periclymenum</i>	Netherlands	AY849947
<i>Ascochyta phacae</i>	CBS 184.55	<i>Phaca alpina</i>	Switzerland	EU167570

<i>Ascochyta</i> sp.	CF-090372	<i>Sedum sediforme</i>	Sierra Alhamilla, Almeria, Spain	MG065754
<i>Ascochyta rabiei</i>	CBS 237.37	<i>Cicer arietinum</i>	Bulgaria	EU167600
<i>Ascochyta</i> sp.	CF-090376	<i>Bellota hirsuta</i>	Sierra Alhamilla, Almeria, Spain	MG065755
<i>Ascochyta</i> sp.	CF-090240	<i>Genista umbellata</i>	Tabernas desert, Almeria, Spain	MG065756
<i>Ascochyta</i> sp.	CF-091946	<i>Lycium intricatum</i>	Tabernas desert, Almeria, Spain	MG065757
<i>Ascochyta</i> sp.	CF-091945	<i>Launaea arborescens</i>	Tabernas desert, Almeria, Spain	MG065758
<i>Ascochyta</i> sp.	CF-287439	<i>Ononis fruticosa</i>	El Margen salt marsh, Granada	MG065759
<i>Ascochyta</i> sp.	CF-090252	<i>Genista umbellata</i>	Tabernas desert, Almeria, Spain	MG065760
<i>Ascochyta</i> sp.	CF-090321	<i>Artemisia barrelieri</i>	Tabernas desert, Almeria, Spain	MG065761
<i>Ascochyta</i> sp.	CF-090305	<i>Launaea arborescens</i>	Tabernas desert, Almeria, Spain	MG065762
<i>Ascochyta</i> sp.	CF-090840	<i>Launaea arborescens</i>	Tabernas desert, Almeria, Spain	MG065763
<i>Ascochyta</i> sp.	CF-285366	<i>Rosmarinus eriocalyx</i>	Tabernas desert, Almeria, Spain	MG065764
<i>Ascochyta</i> sp.	CF-285355	<i>Asparagus horridus</i>	Tabernas desert, Almeria, Spain	MG065765
<i>Ascochyta</i> sp.	CF-287454	<i>Rosmarinus eriocalyx</i>	Tabernas desert, Almeria, Spain	MG065766
<i>Ascochyta</i> sp.	CF-287450	<i>Rosmarinus eriocalyx</i>	Tabernas desert, Almeria, Spain	MG065767
<i>Ascochyta</i> sp.	CF-287451	<i>Rosmarinus eriocalyx</i>	Tabernas desert, Almeria, Spain	MG065768
<i>Ascochyta viciae-pannonicae</i>	CBS 254.92	<i>Vicia pannonica</i>	Czechoslovakia	EU167559 KT389702
<i>Ascochyta pisi</i> var <i>pisi</i>	CBS 108.26	-	-	EU167557
<i>Phoma</i> sp.	CF-092164	<i>Lygeum spartum</i>	Tabernas desert, Almeria, Spain	MG065769
<i>Neosetophoma samarorum</i>	CBS 139.96	grass	Netherlands	FJ427062 KF251665
<i>Ascomycota</i> sp.	ARIZ PAAsh314	<i>Fraxinus velutina</i>	Arizona, USA	JN120365
<i>Phaeosphaeria nigrans</i>	NBRC 33095	<i>Phragmites karka</i>	Japan	NBRC33095
<i>Neosetophoma italica</i>	MFLUCC 13-0388	<i>Iris germanica</i>	Italy	KP711356 KP711361
<i>Neosetophoma</i> sp.	CF-282001	<i>Retama sphaerocarpa</i>	Albuñuelas, Granada, Spain	KU295580
<i>Neosetophoma</i> sp.	CF-288948	<i>Teucrium pollium</i> sbs <i>gracillium</i>	El Margen salt marsh, Granada	MG065770
<i>Phoma</i> sp.	CF-090323	<i>Artemisia barrelieri</i>	Tabernas desert, Almeria, Spain	MG065771
<i>Phoma</i> sp.	CF-091947	<i>Suaeda vera</i>	Tabernas desert, Almeria, Spain	MG065772
<i>Pyrenochaeta lycopersici</i>	CBS 267.59	<i>Lycopersicon esculentum</i>	Netherlands	JF740261 GQ387612
<i>Foliophoma fallens</i>	CBS 167.78	<i>Olea europaea</i>	New Zealand	KY940772 GU238074
<i>Foliophoma fallens</i>	CF-090782	<i>Asparagus horridus</i>	Tabernas desert, Almeria, Spain	MG065773
<i>Libertasomyces</i> sp.	CF-090382	<i>Bellota hirsuta</i>	Sierra Alhamilla, Almeria, Spain	MG065774
<i>Libertasomyces</i> sp.	CF-092175	<i>Bellota hirsuta</i>	Sierra Alhamilla, Almeria, Spain	MG065775
<i>Libertasomyces platani</i>	CPC 29609	<i>Platanus</i> sp.	New Zealand	KY173416 KY173507
<i>Libertasomyces myopori</i>	CPC 27354	<i>Myoporum serratum</i>	South Africa	KX228281 KX228332
<i>Libertasomyces</i> sp.	CF-092176	<i>Bellota hirsuta</i>	Sierra Alhamilla, Almeria, Spain	MG065776
<i>Neoplatysporoides aloicola</i>	CBS 139901	<i>Aloe</i> sp.	Tanzania	KR476719 KR476754
<i>Alternaria alternata</i>	CF-090395	<i>Arthrocnemum macrostachyum</i>	Cabo de gata salt marsh, Almeria, Spain	MG065777
<i>Alternaria alternata</i>	CF-090318	<i>Artemisia barrelieri</i>	Tabernas desert, Almeria, Spain	MG065778
<i>Alternaria alternata</i>	CBS 115200	<i>Citrus x tangelo</i>	South Africa	KP124352 KP124504

<i>Alternaria alternata</i>	CBS 118814	<i>Solanum lycopersicum</i>	USA	KP124357	KP124509
<i>Alternaria alternata</i>	CF-288903	<i>Arthrocnemum macrostachyum</i>	El Margen salt marsh, Granada	MG065779	
<i>Alternaria alternata</i>	CF-090322	<i>Artemisia barrelieri</i>	Tabernas desert, Almeria, Spain	MG065780	
<i>Alternaria alternata</i>	CBS 102600	<i>Citrus reticulata</i>	USA	KP124331	KP124483
<i>Alternaria alternata</i>	CF-288939	<i>Suaeda vera</i>	El Margen salt marsh, Granada	MG065781	
<i>Alternaria</i> sp.	CF-090254	<i>Asparagus horridus</i>	Tabernas desert, Almeria, Spain	MG065782	
<i>Alternaria gaisen</i>	CBS 118488	<i>Pyrus pyrifolia</i>	Japan	KP124427	KP124581
<i>Alternaria arborescens</i>	CBS 102605	<i>Lycopersicon esculentum</i>	California	NR_135927	KC584253
<i>Alternaria eichhorniae</i>	CBS 119778	<i>Eichhornia crassipes</i>	Indonesia	KP124426	KP124580
<i>Alternaria</i> sp.	CF-090752	<i>Thymelaea hirsuta</i>	Los Almorades, Almeria, Spain	MG065783	
<i>Alternaria</i> sp.	CF-090365	<i>Sedum sediforme</i>	Sierra Alhamilla, Almeria, Spain	MG065784	
<i>Alternaria terricola</i>	CBS 202.67	wheat field soil	Northern Utah	NR_103600	KC584365
<i>Alternaria</i>	CF-288921	<i>Ononis tridentata</i>	El Margen salt marsh, Granada	MG065785	
<i>Alternaria nobilis</i>	CBS 116490	<i>Dianthus caryophyllus</i>	New Zealand	KC584208	KC584291
<i>Alternaria infectoria</i>	CBS 210.86	<i>Triticum aestivum</i>	England	NR_131263	KC584280
<i>Alternaria ethzedia</i>	CBS 197.86	<i>Brassica napus</i>	Switzerland	NR_135928	KC584274
<i>Alternaria</i> sp.	CF-288904	<i>Arthrocnemum macrostachyum</i>	El Margen salt marsh, Granada	MG065786	
<i>Alternaria</i> sp.	CF-282008	<i>Retama sphaerocarpa</i>	Albuñuelas, Granada, Spain	MG065787	
<i>Alternaria</i> sp.	CF-288922	<i>Ononis tridentata</i>	El Margen salt marsh, Granada	MG065788	
<i>Alternaria</i> sp.	CF-288961	<i>Sonchus crassifolius</i>	El Margen salt marsh, Granada	MG065789	
<i>Alternaria</i> sp.	CF-090246	<i>Genista umbellata</i>	Tabernas desert, Almeria, Spain	MG065790	
<i>Alternaria</i> sp.	CF-090261	<i>Asparagus horridus</i>	Tabernas desert, Almeria, Spain	MG065791	
<i>Alternaria</i> sp.	CF-288960	<i>Frankenia pulvirulenta</i>	El Margen salt marsh, Granada	MG065792	
<i>Alternaria penicillata</i>	CBS 116607	<i>Papaver rhoeas</i>	Austria	KC584229	KC584322
<i>Dendryphion papaveris</i>	NBRC 9282	<i>Papaver somniferum</i>	-	NBRC9282	
<i>Dendryphion papaveris</i>	NBRC 9801	<i>Papaver somniferum</i>	Nagano, Japan	NBRC9801	
<i>Alternaria solani</i>	CBS 116651	<i>Solanum tuberosum</i>	USA	KC584217	KC584306
<i>Alternaria cumini</i>	CF-090366	<i>Sedum sediforme</i>	Sierra Alhamilla, Almeria, Spain	MG065793	
<i>Alternaria cumini</i>	CBS 121329	<i>Cuminum cyminum</i>	India	KC584191	KC584267
<i>Stemphylium</i> sp.	CF-090250	<i>Genista umbellata</i>	Tabernas desert, Almeria, Spain	MG065794	
<i>Stemphylium</i> sp.	CF-090346	<i>Ononis ramosissima</i>	Sierra Alhamilla, Almeria, Spain	MG065795	
<i>Stemphylium</i> sp.	CF-090776	<i>Genista umbellata</i>	Tabernas desert, Almeria, Spain	MG065796	
<i>Stemphylium</i> sp.	CF-090781	<i>Asparagus horridus</i>	Tabernas desert, Almeria, Spain	MG065797	
<i>Paradendryphiella salina</i>	CBS 142.60	<i>Spartina</i> sp.	Southampton, England	DQ411540	KF156158
<i>Paradendryphiella salina</i>	CF-285749	<i>Centaurea dracunculifolia</i>	El Margen salt marsh, Granada	MG065798	
<i>Pleospora herbarum</i> var <i>herbarum</i>	CBS 191.86	<i>Medicago sativa</i>	India	KC584239	JX681120
<i>Pleospora herbarum</i>	CF-090771	<i>Genista umbellata</i>	Tabernas desert, Almeria, Spain	MG065799	
<i>Pleospora herbarum</i>	NBRC 7404	-	-	NBRC7404	
<i>Pleospora herbarum</i>	CF-285761	<i>Inula crithmoides</i>	Punta Entinas, Almeria, Spain	MG065800	

<i>Pleospora herbarum</i>	CF-288936	<i>Sonchus crassifolius</i>	El Margen salt marsh, Granada	MG065801
<i>Pleospora herbarum</i>	CF-090249	<i>Genista umbellata</i>	Tabernas desert, Almeria, Spain	MG065802
<i>Comoclathris sedi</i>	MFLUCC 13-0763	<i>Rosa</i> sp.	Italy	KP334717 KP334707
<i>Comoclathris</i> sp.	CF-090266	<i>Lygeum spartum</i>	Tabernas desert, Almeria, Spain	MG065803
<i>Comoclathris</i> sp.	CF-287447	<i>Rosmarinus eriocalyx</i>	Tabernas desert, Almeria, Spain	MG065804
<i>Comoclathris</i> sp.	CF-090792	<i>Lygeum spartum</i>	Tabernas desert, Almeria, Spain	MG065805
<i>Comoclathris</i> sp.	CF-091934	<i>Lygeum spartum</i>	Tabernas desert, Almeria, Spain	MG065806
<i>Comoclathris</i> sp.	CF-091944	<i>Launaea arboresceus</i>	Tabernas desert, Almeria, Spain	MG065807
<i>Comoclathris</i> sp.	CF-285379	<i>Fagonia cretica</i>	Tabernas desert, Almeria, Spain	MG065808
<i>Comoclathris</i> sp.	CF-282003	<i>Retama sphaerocarpa</i>	Albuñuelas, Granada, Spain	MG065809
<i>Comoclathris</i> sp.	CF-090361	<i>Sedum sediforme</i>	Sierra Alhamilla, Almeria, Spain	MG065810
<i>Comoclathris</i> sp.	CF-090763	<i>Nerium oleander</i>	Tabernas desert, Almeria, Spain	MG065811
<i>Comoclathris spartii</i>	MFLUCC 13-0214	<i>Spartium junceum</i>	Italy	KM577159 KM577160
<i>Comoclathris</i> sp.	CF-091922	<i>Ziziphus lotus</i>	Los Almorades, Almeria, Spain	MG065812
<i>Comoclathris</i> sp.	CF-090267	<i>Lygeum spartum</i>	Tabernas desert, Almeria, Spain	MG065813
<i>Tamaricicola</i> sp.	CF-288959	<i>Limonium majus</i>	El Margen salt marsh, Granada	MG065814
<i>Tamaricicola</i> sp.	CF-288916	<i>Limonium majus</i>	El Margen salt marsh, Granada	MG065815
<i>Tamaricicola</i> sp.	CF-090279	<i>Limonium insigne</i>	Tabernas desert, Almeria, Spain	MG065816
<i>Tamaricicola muriformis</i>	MFLUCC 15-0488	<i>Tamarix gallica</i>	Italy	KU752187 KU561879
<i>Tamaricicola muriformis</i>	MFLUCC 15-0490	<i>Tamarix gallica</i>	Italy	KU752189 KU729856
<i>Decorospora gaudefroyi</i>	NBRC 32144	<i>Salicornia herbacea</i>	Lake Notoro, Hokkaido, Japan	NBRC32144
<i>Decorospora</i> sp.	ATCC MYA-3203	<i>Sarcocornia perennis</i>	Red Bank, Northampton Co., VA, USA.	FJ914870 FJ914897
<i>Phoma</i> sp.	CF-288917	<i>Lygeum spartum</i>	El Margen salt marsh, Granada	MG065817
<i>Phoma</i> sp.	CF-090826	<i>Thymus hyemalis</i>	Tabernas desert, Almeria, Spain	MG065818
<i>Phoma</i> sp.	CF-090829	<i>Thymus hyemalis</i>	Tabernas desert, Almeria, Spain	MG065819
<i>Phoma</i> sp.	CF-090291	<i>Thymus hyemalis</i>	Tabernas desert, Almeria, Spain	MG065820
<i>Neocamarosporium</i> sp.	CF-090392	<i>Arthrocnemum macrostachyum</i>	Cabo de gata salt marsh, Almeria, Spain	MG065821
<i>Neocamarosporium</i> sp.	CF-288932	<i>Salsola vermiculata</i>	El Margen salt marsh, Granada	MG065822
<i>Neocamarosporium</i> sp.	CF-288928	<i>Salsola vermiculata</i>	El Margen salt marsh, Granada	MG065823
<i>Neocamarosporium</i> sp.	CF-288962	<i>Arthrocnemum macrostachyum</i>	El Margen salt marsh, Granada	MG065824
<i>Neocamarosporium</i> sp.	CF-090841	<i>Salsola genistoides</i>	Tabernas desert, Almeria, Spain	MG065825
<i>Neocamarosporium</i> sp.	CF-285744	<i>Atriplex glauca</i>	El Margen salt marsh, Granada	MG065826
<i>Neocamarosporium</i> sp.	CF-285775	<i>Suaeda vera</i>	El Margen salt marsh, Granada	MG065827
<i>Neocamarosporium</i> sp.	CF-285377	<i>Suaeda vera</i>	Tabernas desert, Almeria, Spain	MG065828
<i>Neocamarosporium</i> sp.	CF-288934	<i>Salsola vermiculata</i>	El Margen salt marsh, Granada	MG065829
<i>Neocamarosporium</i> sp.	CF-090309	<i>Suaeda vera</i>	Tabernas desert, Almeria, Spain	MG065830
<i>Neocamarosporium chichastianum</i>	CF-285348	<i>Salsola papillosa</i>	Tabernas desert, Almeria, Spain	MG065831
<i>Neocamarosporium chichastianum</i>	CBS 137502	saline soil	Iran	KP004455 KP004483
<i>Neocamarosporium chersinae</i>	CPC 27298	Dead angulate tortoise shell	South Africa	KY929153 KY929182

<i>Neocamarosporium</i> sp.	CF-090312	<i>Suaeda vera</i>	Tabernas desert, Almeria, Spain	MG065832
<i>Neocamarosporium</i> sp.	CF-285373	<i>Salsola papillosa</i>	Tabernas desert, Almeria, Spain	MG065833
<i>Neocamarosporium</i> sp.	CF-285768	<i>Lycium intricatum</i>	Torre Garcia, Almeria, Spain	MG065834
<i>Neocamarosporium</i> sp.	CF-090390	<i>Arthrocnemum macrostachyum</i>	Cabo de gata salt marsh, Almeria, Spain	MG065835
<i>Neocamarosporium</i> sp.	CF-287455	<i>Lycium intricatum</i>	Torre Garcia, Almeria, Spain	MG065836
<i>Dimorphosporicola</i> sp.	CF-090768	<i>Suaeda vera</i>	Tabernas desert, Almeria, Spain	MG065837
<i>Dimorphosporicola tragani</i>	CBS 570.85	<i>Traganum nudatum</i> var. <i>microphyll</i>	Mauritania	KU728497 KU728536
<i>Dimorphosporicola tragani</i>	CF-090383	<i>Arthrocnemum macrostachyum</i>	Cabo de gata salt marsh, Almeria, Spain	MG065838
<i>Chaetosphaeronema hispidulum</i>	CBS 826.88	soil	Israel	EU754145
<i>Neocamarosporium</i> sp.	CF-090393	<i>Arthrocnemum macrostachyum</i>	Cabo de gata salt marsh, Almeria, Spain	MG065839
<i>Neocamarosporium</i> sp.	CF-288930	<i>Salsola vermiculata</i>	El Margen salt marsh, Granada	MG065840
<i>Neocamarosporium</i> sp.	CF-285746	<i>Atriplex glauca</i>	El Margen salt marsh, Granada	MG065841
<i>Neocamarosporium</i> sp.	CF-285745	<i>Atriplex glauca</i>	El Margen salt marsh, Granada	MG065842
<i>Neocamarosporium</i> sp.	CF-285747	<i>Beta macrocarpa</i>	El Margen salt marsh, Granada	MG065843
<i>Chaetodiplodia</i> sp.	CBS 453.68	<i>Halimione portulacoides</i>	Netherlands	DQ678054
<i>Neocamarosporium</i> sp.	CF-285349	<i>Anabasis articulata</i>	Tabernas desert, Almeria, Spain	MG065844
<i>Neocamarosporium</i> sp.	CF-285372	<i>Anabasis articulata</i>	Tabernas desert, Almeria, Spain	MG065845
<i>Neocamarosporium</i> sp.	CF-090335	<i>Anthyllis cihoides</i>	Sierra Alhamilla, Almeria, Spain	MG065846
<i>Neocamarosporium</i> sp.	CF-285368	<i>Anabasis articulata</i>	Tabernas desert, Almeria, Spain	MG065847
<i>Neocamarosporium</i> sp.	CF-090759	<i>Nerium oleander</i>	Tabernas desert, Almeria, Spain	MG065848
<i>Neocamarosporium goegapense</i>	CBS 138008	<i>Mesembryanthemum</i> sp.	Northern Cape Province, South Africa	KJ869163 KJ869220
<i>Neocamarosporium goegapense</i>	CF-090399	<i>Chamaerops humilis</i>	Cabo de gata salt marsh, Almeria, Spain	MG065849
<i>Neocamarosporium</i> sp.	CF-285352	<i>Atriplex glauca</i>	El Margen salt marsh, Granada	MG065850
<i>Neocamarosporium</i> sp.	CF-090227	<i>Suaeda vera</i>	Tabernas desert, Almeria, Spain	MG065851
<i>Neocamarosporium</i> sp.	CF-090284	<i>Salicornia</i> sp.	Tabernas desert, Almeria, Spain	MG065852
<i>Neocamarosporium</i> sp.	CF-090843	<i>Salsola genistoides</i>	Tabernas desert, Almeria, Spain	MG065853
<i>Neocamarosporium</i> sp.	CF-090773	<i>Genista umbellata</i>	Tabernas desert, Almeria, Spain	MG065854
<i>Phaeosphaeriaceae</i> sp.	DF-R-7	<i>Kochia scoparia</i>	QingDao, China	KU991885 KU991909
<i>Neocamarosporium betae</i>	CBS 523.66	<i>Beta vulgaris</i>	Netherlands	FJ426981 EU754179
<i>Neocamarosporium betae</i>	CBS 109410	<i>Beta vulgaris</i>	unknown	KY940790 EU754178
<i>Neocamarosporium calvescens</i>	CBS 344.78	<i>Atriplex hastata</i>	Netherlands	EU754132
<i>Neocamarosporium</i> sp.	CF-090842	<i>Salsola genistoides</i>	Tabernas desert, Almeria, Spain	MG065855
<i>Neocamarosporium calvescens</i>	CBS 432.77	<i>Obione portulacoides</i>	Netherlands	GU230752 JF740267

^a ATCC, American Type Culture Collection, University Boulevard Manassas VA, USA; CBS, CBS-KNAW Fungal Biodiversity Centre, Utrecht, the Netherlands; CF, Fundación MEDINA Private Fungal Collection, Granada, Spain; CPC, Culture collection of Pedro Crous, housed at CBS, Netherlands; MFLUCC, Mae Fah Luang University Culture Collection, Chiang Rai, Thailand; NBRC, Biological Resource Center, National Institute of Technology and Evolution, Tokyo, Japan

^b Accession numbers of sequences newly generated in this study are indicated in bold. 28S, large subunit of the nrDNA; ITS, internal transcribed spacer regions of the nrDNA and intervening 5.8S nrDNA

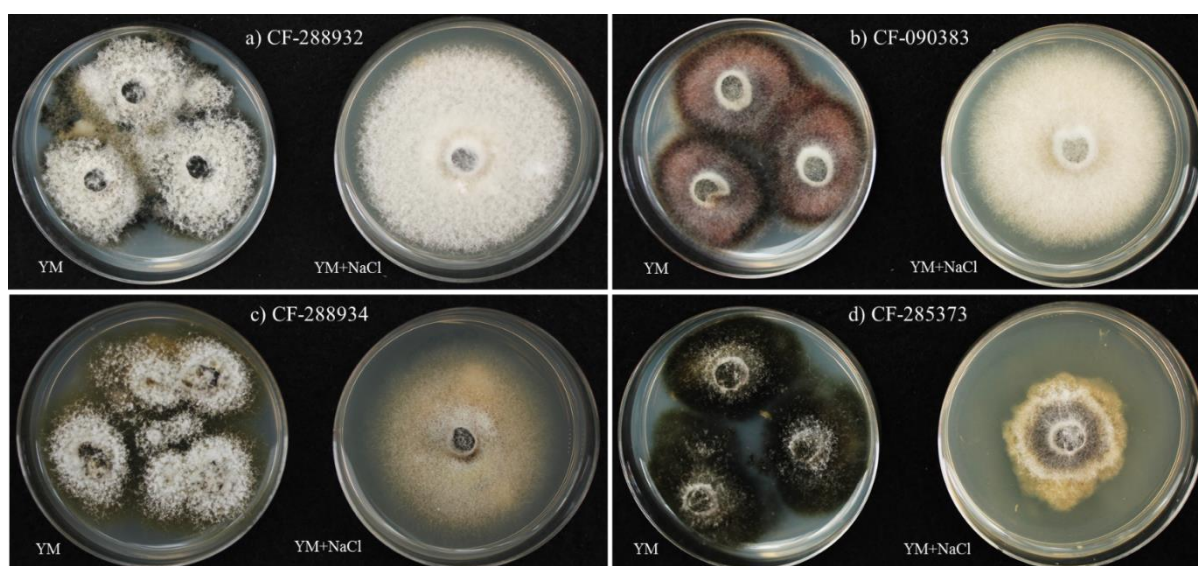
Supplementary Table 3. Categorization of active isolates according to target strain. Chemical dereplication of fungal metabolites (otherwise specified). A (*Aspergillus fumigatus*), C (*Candida albicans*), M (*Magnaporthe grisea*), Ca (*Colletotrichum acutatum*) and H (HepG2).

Strain	Taxonomy	Exclusive Resin					Both					Exclusive No Resin					LC-MS Dereplication
		A	C	M	Ca	H	A	C	M	Ca	H	A	C	M	Ca	H	
CF-285778	<i>Albifimbria verrucaria</i>	0	0	0	0	0	1	1	1	1	1	0	0	0	0	0	illudin C2, roridin A & H, verrucarins A&B
CF-277739	<i>Trichothecium roseum</i>	0	0	0	0	0	1	1	1	1	1	0	0	0	0	0	trichothecene
CF-285757	<i>Trichothecium roseum</i>	0	0	0	0	0	1	1	1	1	1	0	0	0	0	0	trichothecene
CF-285465	<i>Coprinus cinereus</i>	0	0	1	0	0	1	1	0	1	1	0	0	0	0	0	skyrin, lagopodin B
CF-091944	<i>Comoclathris</i> sp.	0	0	0	0	0	0	0	1	0	0	1	1	0	1	1	phomasetin, altersetin
CF-285780	<i>Neosetophoma</i> sp.	0	0	0	0	0	1	0	1	0	1	0	0	0	1	0	globosuxanthone A
CF-285756	<i>Pseudodiplodia</i> sp.	1	0	0	0	0	0	0	1	0	1	0	0	0	1	0	globosuxanthone A, emodin
CF-282003	<i>Comoclathris</i> sp.	1	0	0	0	0	0	0	1	0	0	0	0	0	1	1	phomasetin, altersetin
CF-287447	<i>Comoclathris</i> sp.	1	0	0	0	0	0	0	0	0	0	0	0	1	1	1	phomasetin, altersetin
CF-285362	<i>Dendryphon</i> sp.	0	0	0	0	0	0	0	1	0	0	0	0	0	1	1	phomasetin
CF-287464	<i>Pyrenochaeta</i> sp.	0	0	0	0	0	0	0	0	0	0	0	0	1	1	1	C ₂₉ H ₄₁ NO ₅ (previously described in plants)
CF-090752	<i>Alternaria</i> sp.	0	0	1	0	0	1	0	0	0	1	0	0	0	0	0	dextrusin B, B4, terpestacin
CF-279239	<i>Coniochaeta</i> sp.	0	0	0	0	0	1	0	0	0	1	0	0	1	0	0	Curvicolide A/B, xylactam, C ₂₆ H ₄₂ O ₅ (previously described in plants)
CF-091924	unidentified	0	0	0	0	0	1	0	1	0	0	0	0	0	0	1	possible antibiotic YW 3548, C ₄₇ H ₇₅ N ₇ O ₁₂ and C ₄₆ H ₇₃ N ₇ O ₁₂ (no match in DNP)
CF-091922	<i>Comoclathris</i> sp.	0	0	1	0	0	0	0	0	0	1	0	0	0	0	0	illudin C3, C ₂₆ H ₄₃ NO ₆ (previously described in plants)
CF-091951	<i>Xylaria</i> sp.	0	0	1	0	0	0	0	0	0	1	0	0	0	0	0	nectriapyrone, cytochalasin C/D/M/Q
CF-279244	<i>Coprinopsis episcopalis</i>	0	0	1	0	0	0	0	0	0	1	0	0	0	0	0	lagopodin A & B
CF-282344	unidentified	0	0	0	0	1	0	0	1	0	0	0	0	0	0	0	phomasetin
CF-091933	<i>Pleospora</i> sp.	0	0	0	0	0	0	0	0	0	0	0	0	1	0	1	phomasetin, altersetin
CF-090383	<i>Dimorphosporicola traganii</i>	1	1	0	0	1	0	0	0	0	0	0	0	0	0	0	cerulenin
CF-090835	<i>Preussia</i> sp.	0	0	0	0	1	0	1	0	0	0	0	0	0	0	0	di-hydro-bi-chloro-geodin, TMC 120 B & C
CF-090227	<i>Neocamarosporium</i> sp.	0	0	0	0	0	1	0	0	0	1	0	0	0	0	0	leptosphaeridione
CF-090766	<i>Comoclathris</i> sp.	1	0	0	0	0	0	0	0	0	1	0	0	0	0	0	possible coriolide
CF-288925	unidentified	1	0	0	0	0	0	0	0	0	1	0	0	0	0	0	hormonemate, possible coriolide
CF-090379	<i>Camarosporium</i> sp.	0	0	0	0	0	1	0	0	0	0	0	0	0	0	1	naematolin, naematolone, roridin L2
CF-286681	<i>Neodidymelliopsis</i> sp.	0	0	0	0	0	1	0	0	0	0	0	0	0	0	1	waol A
CF-285753	<i>Pseudodiplodia rutilcola</i>	0	0	0	0	0	1	0	0	0	0	0	0	0	0	1	violaceol, C ₂₂ H ₂₄ O ₁₁ S (no match in DNP)
CF-285754	<i>Pseudodiplodia rutilcola</i>	0	0	0	0	0	1	0	0	0	0	0	0	0	0	1	possible 2-(3,4-Epoxy-5-heptenyl)-5-methylpyrrole, C ₂₃ H ₂₄ O ₁₁ S (no match in DNP)
CF-090353	<i>Lepteutypa cupressi</i>	0	0	0	0	1	0	0	0	0	0	1	0	0	0	0	MDN-210 (C ₁₇ H ₂₄ O ₄), pestahivin
CF-090758	unidentified	1	0	0	0	0	0	0	0	0	0	0	0	0	0	1	possible coriolide
CF-090357	<i>Leptosphaeria hispanica</i>	0	0	0	0	0	0	0	0	0	0	1	0	0	0	1	massarigenin A, cordyol C, dehydromassarilactone D, phomasetin
CF-090361	<i>Comoclathris</i> sp.	0	0	0	0	0	0	0	0	0	0	1	0	0	0	1	2-(2-Hydroxy-5-metgospheoxy) acrylic acid, C ₁₈ H ₃₀ O ₄ S (no match in DNP), possible coriolide
CF-287440	<i>Aureobasidium</i> sp.	0	0	0	0	0	0	0	0	0	0	1	0	0	0	1	C ₄₈ H ₇₈ O ₁₈ (previously described from plants)
CF-090213	<i>Eutypa consobrina</i>	1	0	0	0	1	0	0	0	0	0	0	0	0	0	0	MDN-209 (C ₁₇ H ₂₆ O ₄), MDN-210 (C ₁₇ H ₂₄ O ₄), MDN-211 (C ₁₆ H ₁₂ O ₄)

CF-090748	<i>unidentified</i>	1	0	0	0	0	0	0	0	0	0	0	0	0	0	1	possible cerebroside B
CF-281556	<i>Stagnospora</i> sp.	0	0	0	1	0	1	1	1	0	0	0	0	0	0	0	secalonic acid C, possible alternethanoxin A
CF-090324	<i>Pseudocamarosporium</i> sp.	0	1	1	1	0	0	0	0	0	0	1	0	0	0	0	calbistrin A
CF-285462	<i>Fusarium equiseti</i>	0	0	0	0	0	0	1	0	0	0	0	0	1	1	0	equisetin
CF-090393	<i>Neocamarosporium</i> sp.	1	0	0	1	0	0	0	0	0	0	0	0	0	0	0	possible solanopyrone B
CF-285355	<i>Ascochyta</i> sp.	0	0	0	0	0	0	0	0	0	0	1	0	1	0	0	cephalochromin and cercosporamide
CF-285768	<i>Neocamarosporium</i> sp.	0	0	1	0	0	0	0	0	0	0	1	0	0	0	0	terrecyclic acid A
CF-090792	<i>Comoclathris</i> sp.	0	0	0	0	0	0	0	0	0	0	1	0	1	0	0	phomasetin, altersetin
CF-288952	<i>Phaeosphaeria</i> sp.	0	0	0	0	0	0	0	0	0	0	0	0	1	1	0	possible brefeldin A and mycophenolic acid
CF-287454	<i>Ascochyta</i> sp.	0	0	0	0	0	0	1	0	0	0	1	0	0	0	0	cercosporamide
CF-090351	<i>Hormonema carpetanum</i>	0	0	0	0	0	1	0	0	0	0	0	1	0	0	0	C ₃₀ H ₅₄ O ₁₄ (no match in DNP)
CF-285358	<i>Phaeotheca triangularis</i>	0	0	0	0	0	1	0	0	0	0	0	1	0	0	0	possible coriolid C ₁₈ H ₃₀ O ₂
CF-285461	<i>Xylaria</i> sp.	1	1	0	0	0	0	0	0	0	0	0	0	0	0	0	antibiotic TKR2648
CF-285752	<i>Cryptococcus</i> sp.	0	1	0	0	0	0	0	0	0	0	1	0	0	0	0	C ₁₅ H ₂₀ O ₃
CF-090267	<i>Comoclathris</i> sp.	0	0	0	0	0	0	0	0	0	0	1	1	0	0	0	possible coriolid and nematolin
CF-287457	<i>Setomelanomma</i> sp.	0	0	0	0	0	0	0	0	0	0	1	1	0	0	0	11,12-dihydroxyeudesm-4-en-3-one, possible coriolid
CF-288933	<i>Preussia australis</i>	1	1	0	0	0	0	0	0	0	0	0	0	0	0	0	C ₁₈ H ₃₃ NO (previously described in plants)
CF-277101	<i>Selenophoma juncea</i>	0	0	0	0	0	0	0	0	0	1	0	0	0	0	0	heptelidic acid (avocettin)
CF-090350	<i>Anthostomella</i> sp.	0	0	0	0	0	0	0	0	0	1	0	0	0	0	0	heptelidic and hydroheptelidic acid
CF-090359	<i>Stagnospora</i> sp.	0	0	0	0	0	0	0	0	0	1	0	0	0	0	0	11,12-dihydroxyeudesm-4-en-3-one, diorcinol F, altersetin, phomasetin
CF-090782	<i>Foliophoma</i> sp.	0	0	0	0	0	0	0	0	0	1	0	0	0	0	0	C ₃₉ H ₂₇ NO ₈ S (no match in DNP)
CF-090785	<i>Neomicrosphaeropsis</i> sp.	0	0	0	0	0	0	0	0	0	1	0	0	0	0	0	possible ACTG Toxin C
CF-090828	<i>Lophiostoma</i> sp.	0	0	0	0	0	0	0	0	0	1	0	0	0	0	0	oxasetin, cytochalasin, C ₂₂ H ₂₂ O ₈ (previously described in plants)
CF-092173	<i>Xenodidymella</i> sp.	0	0	0	0	0	0	0	0	0	1	0	0	0	0	0	possible coriolid, phomasetin
CF-092175	<i>Libertasomyces</i> sp.	0	0	0	0	0	0	0	0	0	1	0	0	0	0	0	possible naematolin
CF-092179	<i>unidentified</i>	0	0	0	0	0	0	0	0	0	1	0	0	0	0	0	C ₂₉ H ₃₃ N ₃ O ₆ (previously described in plants)
CF-278520	<i>Phoma</i> sp.	0	0	0	0	0	0	0	0	0	1	0	0	0	0	0	curvicolide A/B, C ₂₆ H ₄₂ O ₅ (previously described in plants)
CF-279248	<i>Anthostomella</i> sp.	0	0	0	0	0	0	0	0	0	1	0	0	0	0	0	C ₂₆ H ₄₂ O ₅ (previously described in plants)
CF-285767	<i>Neomicrosphaeropsis</i> sp.	0	0	0	0	0	0	0	0	0	1	0	0	0	0	0	phomasetin
CF-286679	<i>Chaetomium</i> sp.	0	0	0	0	0	0	0	0	0	1	0	0	0	0	0	possible sphaeropsidin B, C ₂₆ H ₄₂ O ₅ (previously described in plants)
CF-090249	<i>Pleospora herbarum</i>	0	0	0	0	1	0	0	0	0	0	0	0	0	0	0	possible coriolid
CF-090313	<i>Morinia</i> sp.	0	0	0	0	1	0	0	0	0	0	0	0	0	0	0	MDN-209 (C ₁₇ H ₂₆ O ₄)
CF-090838	<i>Preussia grandispora</i>	0	0	0	0	1	0	0	0	0	0	0	0	0	0	0	mellein
CF-285373	<i>Neocamarosporium</i> sp.	0	0	0	0	1	0	0	0	0	0	0	0	0	0	0	spirostaphylotrichin (C, D, H o G)
CF-290943	<i>unidentified</i>	0	0	0	0	1	0	0	0	0	0	0	0	0	0	0	brefeldin A, C ₁₆ H ₂₂ O ₈ possible macrospheptide
CF-287465	<i>Aureobasidium pullulans</i>	0	0	0	0	1	0	0	0	0	0	0	0	0	0	0	possible exophilin A, C ₄₀ H ₇₄ O ₁₃ (no match in DNP)
CF-285363	<i>Phaeosphaeria</i> sp.	0	0	0	0	0	0	0	0	0	0	0	0	0	0	1	elsinochrome D, possible phaeosphaerin C
CF-090221	<i>Verrucocladosporium</i> sp.	0	0	0	0	0	0	0	0	0	0	0	0	0	0	1	C ₁₉ H ₃₀ O ₉ (previously described in plants), cyclo(Pro-Phe)
CF-090254	<i>Alternaria</i> sp.	0	0	0	0	0	0	0	0	0	0	0	0	0	0	1	C ₁₂ H ₁₉ NO ₃ (previously described in plants)

CF-090330	<i>Coniothyrium sp.</i>	0	0	0	0	0	0	0	0	0	0	0	0	0	0	1	brefeldin A, C ₁₃ H ₁₇ NO ₂ (previously described in plants)
CF-090371	<i>Morinia pestalozzioides</i>	0	0	0	0	0	0	0	0	0	0	0	0	0	0	1	moriniafungin
CF-090372	<i>Ascochyta sp.</i>	0	0	0	0	0	0	0	0	0	0	0	0	0	0	1	C ₄₈ H ₇₈ O ₁₈ (previously described in plants)
CF-090382	<i>Libertasomyces sp.</i>	0	0	0	0	0	0	0	0	0	0	0	0	0	0	1	naematolin, cytosporone D, cordyol E
CF-090768	<i>Dimorphosporicola sp.</i>	0	0	0	0	0	0	0	0	0	0	0	0	0	0	1	cerulenin
CF-091931	<i>Chaetothyriales sp.</i>	0	0	0	0	0	0	0	0	0	0	0	0	0	0	1	tentative ilicicolin H and asochlorin
CF-278800	<i>Dothiorella sp.</i>	0	0	0	0	0	0	0	0	0	0	0	0	0	0	1	4-Hydroxymellein
CF-285741	<i>Neomicrosphaeropsis sp.</i>	0	0	0	0	0	0	0	0	0	0	0	0	0	0	1	phomasetin
CF-285749	<i>Paradendryphiella salina</i>	0	0	0	0	0	0	0	0	0	0	0	0	0	0	1	waol A
CF-287476	<i>Fusarium sp.</i>	0	0	0	0	0	0	0	0	0	0	0	0	0	0	1	fusaric acid, 3-Hydroxymellein
CF-288910	<i>Aureobasidium pullulans</i>	0	0	0	0	0	0	0	0	0	0	0	0	0	0	1	C ₂₆ H ₄₃ NO ₆ and C ₂₀ H ₃₈ O ₇ (previously described in plants)
CF-285750	<i>Cryptococcus sp.</i>	0	0	0	0	0	1	0	0	0	0	0	0	0	0	0	lovastatin acid
CF-285759	<i>Entodesmium sp.</i>	0	0	0	0	0	1	0	0	0	0	0	0	0	0	0	pycnidione, C ₃₃ H ₄₀ O ₇ (no match in DNP)
CF-285364	<i>Pleiochaeta sp.</i>	0	0	0	0	0	1	0	0	0	0	0	0	0	0	0	phomasetin
CF-090228	<i>Neoamarosporium sp.</i>	0	0	0	0	0	1	0	0	0	0	0	0	0	0	0	phomasetin
CF-285758	<i>Ascochyta sp.</i>	0	0	0	0	0	1	0	0	0	0	0	0	0	0	0	emodin, possible pestalamide A, C ₂₂ H ₂₁ O ₈ (no match in DNP)
CF-288957	<i>Xenodidymella sp.</i>	0	0	0	0	0	1	0	0	0	0	0	0	0	0	0	hormonemate, C ₃₀ H ₅₄ O ₁₄ (no match in DNP)
CF-285350	<i>Camarosporium sp.</i>	1	0	0	0	0	0	0	0	0	0	0	0	0	0	0	C ₁₇ H ₃₁ NO ₃ and C ₁₆ H ₂₉ NO ₄ (previously described in plants)
CF-285357	<i>Preussia similis</i>	1	0	0	0	0	0	0	0	0	0	0	0	0	0	0	pleofungin A
CF-285375	<i>Preussia australis</i>	1	0	0	0	0	0	0	0	0	0	0	0	0	0	0	C ₁₈ H ₃₃ NO (previously described in plants)
CF-285376	<i>Basifimbria sp.</i>	1	0	0	0	0	0	0	0	0	0	0	0	0	0	0	cyclo (phenylalanylprolyl)
CF-285755	<i>Pseudodiplodia ruticola</i>	1	0	0	0	0	0	0	0	0	0	0	0	0	0	0	possible 6-methyl-9-heptadecenoic acid, C ₂₂ H ₂₄ O ₁₁ S (no match in DNP)
CF-287456	<i>Teratosphaeria sp.</i>	0	0	0	0	0	0	0	0	0	0	1	0	0	0	0	3-indolylacetic acid
CF-090284	<i>Neoamarosporium sp.</i>	0	0	0	0	0	0	0	0	0	0	1	0	0	0	0	leptosphaerodione
CF-091947	<i>Phoma sp.</i>	0	0	0	0	0	0	0	0	0	0	1	0	0	0	0	massarigenin A, hormonemate
CF-285378	<i>Preussia sp.</i>	0	0	0	0	0	0	0	0	0	0	1	0	0	0	0	C ₂₁ H ₃₃ N ₅ O ₂ (previously described in plants)
CF-285751	<i>Septoria sp.</i>	0	0	0	0	0	0	0	0	0	0	1	0	0	0	0	C ₂₆ H ₄₃ NO ₆ and C ₂₇ H ₄₅ NO ₆ (previously described in plants)
CF-285760	<i>Cryptococcus sp.</i>	0	0	0	0	0	0	0	0	0	0	1	0	0	0	0	C ₁₈ H ₃₂ N ₈ O ₁₀ (no match in DNP)
CF-285765	<i>Paraconiothyrium sp.</i>	0	0	0	0	0	0	0	0	0	0	1	0	0	0	0	C ₃₆ H ₂₂ O ₆ (no match in DNP)
CF-285774	<i>Selenophoma juncea</i>	0	0	0	0	0	0	0	0	0	0	1	0	0	0	0	possible phomtone, nortenuazonic acid
CF-285777	<i>Dothiorella sp.</i>	0	0	0	0	0	0	0	0	0	0	1	0	0	0	0	dechlorogriseofulvin, griseofulvin
CF-285772	<i>Preussia sp.</i>	0	0	0	0	0	0	1	0	0	0	0	0	0	0	0	di-hydro-bi-chloro-geodin, asteric acid
CF-285773	<i>Preussia sp.</i>	0	1	0	0	0	0	0	0	0	0	0	0	0	0	0	cerulenin analog, asteric acid, C ₁₈ H ₃₂ N ₈ O ₁₀ (No match in DNP)
CF-090317	<i>Selenophoma sp.</i>	0	1	0	0	0	0	0	0	0	0	0	0	0	0	0	C ₂₆ H ₄₃ NO ₆ (previously described in plants), cyclo(phenylalanylprolyl)
CF-288939	<i>Alternaria sp.</i>	0	0	0	0	0	0	0	0	0	0	0	1	0	0	0	nortenuazonic and tenuazonic acid
CF-288959	<i>Tamaricicola sp.</i>	0	0	0	0	0	0	0	0	0	0	0	1	0	0	0	cyclo (phenylalanylprolyl), possible phenopyrrozin
CF-092176	<i>Libertasomyces sp.</i>	0	0	0	0	0	0	0	1	0	0	0	0	0	0	0	possible naematolin, C ₂₄ H ₃₀ O ₅
CF-282335	<i>Homortomyces tamaricis</i>	0	0	0	0	0	0	0	1	0	0	0	0	0	0	0	cephalochromin, TAN 2483 A and B
CF-090258	<i>Stagnospora sp.</i>	0	0	1	0	0	0	0	0	0	0	0	0	0	0	0	secalonic acid C, 11,12-dihydroxyeudem-4-en-3-one, iludinic acid

CF-279249	<i>Cainia</i> sp.	0	0	1	0	0	0	0	0	0	0	0	0	0	0	0	cyclo (phenylalanylprolyl)
CF-285365	<i>Phoma</i> sp.	0	0	1	0	0	0	0	0	0	0	0	0	0	0	0	cercosporamide
CF-285743	<i>Epicoccum</i> sp.	0	0	1	0	0	0	0	0	0	0	0	0	0	0	0	tenuazonic acid, mellein, phomasetin
CF-285771	<i>Nigrospora</i> sp.	0	0	1	0	0	0	0	0	0	0	0	0	0	0	0	possible taurocholic acid
CF-287451	<i>Phoma</i> sp.	0	0	1	0	0	0	0	0	0	0	0	0	0	0	0	mycophenolic acid
CF-090778	<i>Stagnospora</i> sp.	0	0	0	0	0	0	0	0	0	0	0	0	1	0	0	11,12-dihydroxyeudesm-4-en-3-one, possible gonytolide F
CF-279243	<i>Leptospora</i> sp.	0	0	0	0	0	0	0	0	0	0	0	0	1	0	0	possible chrysoxanthone
CF-279245	<i>Pseudopithomyces chartarum</i>	0	0	0	0	0	0	0	0	0	0	0	0	1	0	0	possible antibiotic LL-N 313ε
CF-285353	<i>Dothiora</i> sp.	0	0	0	0	0	0	0	0	0	0	0	0	1	0	0	hormonemate
CF-285371	<i>Microascus trigonosporus</i>	0	0	0	0	0	0	0	0	0	0	0	0	1	0	0	petasol
CF-090323	<i>Phoma</i> sp.	0	0	0	1	0	0	0	0	0	0	0	0	0	0	0	antibiotic PF 1163A
CF-090387	<i>Camarosporium</i> sp.	0	0	0	1	0	0	0	0	0	0	0	0	0	0	0	possible coriolide
CF-288938	<i>Didymella</i> sp.	0	0	0	1	0	0	0	0	0	0	0	0	0	0	0	cyclo (phenylalanylprolyl), C ₃₉ H ₂₇ NO ₈ S (no match in DNP)
CF-282337	<i>Ascochyta</i> sp.	0	0	0	0	0	0	0	0	0	0	0	0	0	1	0	possible sequelestatin H1, C ₃₇ H ₅₂ O ₁₅ (previously described in plants)
TOTAL		17	7	13	6	11	22	9	13	4	26	22	7	13	10	30	



Supplementary Figure 2 a-d. Different isolates of *Neocamarosporium* spp grown on yeast malt agar (YM) and yeast malt agar supplemented with NaCl at 3% (YM+NaCl) during 14 days at 22°C and 70% of relative humidity.

Supplementary Table 4. List of collected plant specimens.

Plant Species	Collection place	Ecology	Termophile	Xerophile	Gypsophile	Halophile	Salt Tolerant
<i>Anabasis articulata</i>	Tabernas desert (Almeria)	Desert	x	x		x	
<i>Anthyllis cystisoides</i>	Sierra de la Alhamilla (Almeria)	Semiarid	x				
<i>Anthyllis terniflora</i>	Tabernas desert (Almeria)	Desert	x	x			
<i>Artemisia barrelieri</i>	Tabernas desert (Almeria)	Desert		x			
<i>Arthrocnemum macrostachyum</i>	Cabo de Gata (Almeria)	Salt mars	x	x		x	
<i>Asparagus horridus</i>	Tabernas desert (Almeria)	Desert	x	x			
<i>Atriplex glauca</i>	El Margen (Granada)	Salt mars	x	x		x	
<i>Ballota hirsuta</i>	Sierra de la Alhamilla (Almeria)	Semiarid		x			
<i>Beta macrocarpa</i>	El Margen (Granada)	Salt mars	x			x	
<i>Centaurea dracunculifolia</i>	El Margen (Granada)	Salt mars	x			x	
<i>Chamaerops humilis</i>	Cabo de Gata (Almeria)	Salt mars	x				
<i>Cistus albidus</i>	Sierra de la Alhamilla (Almeria)	Semiarid		x			
<i>Cynanchum acutum</i>	El Margen (Granada)	Salt mars	x			x	
<i>Dittrichia viscosa</i>	Venta de Fraile (Granada)	Semiarid					
<i>Dorycnium pentaphyllum</i>	Punta Entinas (Almeria)	Semiarid					
<i>Euzygodendron bourgeanum</i>	Tabernas desert (Almeria)	Desert	x			x	
<i>Fagonia cretica</i>	Tabernas desert (Almeria)	Desert	x			x	
<i>Frankenia pulverulenta</i>	El Margen (Granada)	Salt mars	x			x	
<i>Frankenia corymbosa</i>	Tabernas desert (Almeria)	Desert	x			x	
<i>Genista umbellata</i>	Tabernas desert (Almeria)	Desert	x				
<i>Gypsophila tomentosa</i>	El Margen (Granada)	Salt mars	x		x	x	
<i>Helianthemum almeriense</i>	Tabernas desert (Almeria)	Desert	x				x
<i>Limbarda crithmoides</i>	Punta Entinas (Almeria)	Semiarid	x			x	
<i>Juniperus oxycedrus</i>	Alfacar (Granada)	Semiarid		x			
<i>Launaea arborescens</i>	Tabernas desert (Almeria)	Desert	x	x			
<i>Lepidium subulatum</i>	El Margen (Granada)	Salt mars			x		
<i>Limodorum abortivum</i>	Barranco de los Pinos (Granada)	Semiarid	x				
<i>Limonium insigne</i>	Tabernas(Almeria)	Desert	x			x	
<i>Limonium majus</i>	El Margen (Granada)	Salt mars				x	
<i>Lycium intricatum</i>	Torre Garcia (Almeria)	Semiarid	x				x
<i>Lygeum spartum</i>	Tabernas(Almeria)	Desert		x			x

<i>Macrosyringion longiflorum</i>	El Margen (Granada)	Salt mars		x	
<i>Moricandia foetida</i>	Tabernas (Almeria)	Desert	x		x
<i>Nerium oleander</i>	Tabernas (Almeria)	Desert	x	x	
<i>Nicotiana glauca</i>	Rodalquilar (Almeria)	Semiarid	x		
<i>Ononis tridentata</i>	El Margen (Granada)	Salt mars			x
<i>Ononis fruticosa</i>	El Margen (Granada)	Salt mars		x	
<i>Ononis ramosissima</i>	Sierra de la Alhamilla (Almeria)	Semiarid			x
<i>Opuntia ficus-indica</i>	Dilar (Granada)	Semiarid		x	
<i>Otanthus maritimus</i>	Torre Garcia (Almeria)	Semiarid	x		x
<i>Phragmites australis</i>	El Margen (Granada)	Salt mars	x		x
<i>Pinus halepensis</i>	Sierra de la Alhamilla (Almeria)	Semiarid	x		
<i>Retama sphaerocarpa</i>	Tabernas (Almeria)	Semiarid	x		
<i>Rhamnus lycioides</i>	Sierra de la Alhamilla (Almeria)	Semiarid		x	
<i>Rosmarinus eriocalyx</i>	Tabernas (Almeria)	Desert	x	x	
<i>Salicornia ramossissima</i>	Tabernas (Almeria)	Desert	x		x
<i>Salsola genistoides</i>	Tabernas (Almeria)	Desert			x
<i>Salsola oppositifolia</i>	Tabernas (Almeria)	Desert			x
<i>Salsola papillosa</i>	Tabernas (Almeria)	Desert			x
<i>Salsola vermiculata</i>	El Margen (Granada)	Salt mars			x
<i>Sedum sediforme</i>	Sierra de la Alhamilla (Almeria)	Semiarid		x	
<i>Sonchus crassifolius</i>	El Margen (Granada)	Salt mars			x
<i>Spartium junceum</i>	Fuente de Hervidero (Granada)	Semiarid		x	
<i>Stipa tenacissima</i>	Albuñuelas (Granada)	Semiarid		x	
<i>Suaeda vera</i>	Tabernas desert (Almeria)	Desert			x
<i>Tamarix canariensis</i>	Tabernas desert (Almeria)	Desert	x	x	x
<i>Teucrium capitatum</i> sbsp. <i>gracillimum</i>	El Margen (Granada)	Salt mars		x	
<i>Thymelaea hirsuta</i>	Los Almorades (Almeria)	Semiarid		x	
<i>Thymus hyemalis</i>	Tabernas desert (Almeria)	Desert	x	x	x
<i>Thymus zygis</i> subsp. <i>gracilis</i>	El Margen (Granada)	Salt mars		x	
<i>Withania frutescens</i>	Almerimar (Almeria)	Semiarid	x	x	x
<i>Ziziphus lotus</i>	Torre Garcia (Almeria)	Semiarid		x	x
<i>Zygophyllum fabago</i>	Torre Garcia (Almeria)	Semiarid	x		x

Structure elucidation of new natural products

MDN-0209 (1) was isolated as a yellow pale oil. A molecular formula of $C_{17}H_{26}O_4$ was determined from HRESIMS data (m/z 277.1800 ($[M + H - H_2O]^+$; calcd. for $C_{17}H_{25}O_3^+$, 277.1798), requiring five double bond equivalents. The 1H , ^{13}C -NMR and (**Table S1**) HSQC data, accounted for the presence in the molecule of three double bonds (δ_C 134.0, C-3; δ_C 131.5, C-4; δ_H 5.23, δ_C 118.8, CH-8; δ_C 136.2, C-9; δ_H 6.42, δ_C 126.9, CH-12; δ_H 6.08, δ_C 134.9, C-13). Two allylic methylenes (δ_H 2.83 and 2.37, δ_C 30.9, CH₂-7; δ_H 2.15, δ_C 36.6, CH₂-14), one aliphatic triplet methyl group (δ_H 0.94, δ_C 14.0, CH₃-16), two allylic singlet methyls (δ_H 1.67, δ_C 18.1, CH₃-10; δ_H 1.74, δ_C 26.0, CH₃-11) and one aliphatic methylenes (δ_H 1.47, δ_C 23.5, CH₂-15) were also observed. Additionally, several oxygenated carbons were present in the molecule: one quaternary carbon (δ_C 61.1, C-1), three methines (δ_H 4.43, δ_C 67.6, CH-2; δ_H 4.61, δ_C 65.2, CH-5; δ_H 3.21, δ_C 59.5, CH-6) and one methylene (δ_H 4.39 and 4.15, δ_C 59.9, CH₂-17). COSY (**Figure S1**) and HMBC (**Figure S2**) spectra helped to construct the planar structure, which contained one epoxide and one six carbons ring, completing the total number of unsaturations. The presence of the epoxide was justified by the shielded chemical shift of carbons C-1 and C-6 respect to the rest of oxygenated carbons. An *E* configuration was proposed for the double bond C-12/C-13 based on the value of the H-12/H-13 coupling constant ($J = 15.7$ Hz). The NOESY interactions observed between protons H-7 and H-10, and those between H-8 and H-11 secured the identity of the two allylic methyl groups. The relative configuration around the six members ring was supported by key NOESY correlations between protons H-2, H₂-7 and H-6, indicating that all of them are on the same face of the molecule. Finally, the absolute configuration at C-2 and C-5 was determined applying the modified Mosher's method (1) to the R- and S-MTPA esters of both secondary hydroxyl groups. Although the 1H gave an irregular distribution of $\Delta\delta^{SR}$ values, the configuration could eventually be determined by analysis of the $\Delta\delta^{SR}$ distribution for the ^{13}C signal (**Figure S10**), indicating an *S* configuration in both centers.

MDN-0210 (2) was isolated as a brown pale oil. A molecular formula of $C_{17}H_{24}O_4$ was determined from HRESIMS (m/z 293.1747 ($[M + H]^+$; calcd. for $C_{17}H_{25}O_4^+$, 293.1747), requiring six degrees of unsaturation. Two protons less in the molecular formula of **2** with respect to **1** and the analysis of the 1H and ^{13}C -NMR spectra (**Table S1**) indicated that the hydroxyl group at C-5 in **1** was oxidized to a carbonyl group in **2**. The HMBC correlation between H-6 (δ_H 3.30) and C-5 (δ_C 198.1) supported this change (**Figure S12**). The rest of the planar structure was confirmed by COSY (**Figure S11**) and HMBC spectra, and proved to be similar to compound **1**. On the other hand, the NOESY interactions observed between protons 2, 7 and 6 supported the relative configuration proposed and the absolute configuration was assumed to be the same as in compound **1**.

MDN-0211 (3) was isolated as a white amorphous solid. Its HRESIMS analysis gave a molecular ion a m/z 235.0574 ($[M + Na]^+$; calcd. for $C_{10}H_{12}NaO_5^+$, 235.0577), which was consistent with the molecular formula $C_{10}H_{12}O_5$, requiring five double bond equivalents. The 1H and ^{13}C -NMR spectra (**Table S2**) showed signals for two methoxy groups (δ_H 3.81, δ_C 56.6, CH_3 -9; δ_H 3.88, δ_C 57.1, CH_3 -10), one oxygenated methylene (δ_H 5.06 and 4.42, δ_C 71.5, CH_2 -8), one double oxygenated methine (δ_H 6.12, δ_C 107.6, CH -1) and one aromatic ring (δ_H 6.57, δ_C 98.1, CH -4; δ_C 118.6, C-2; δ_C 149.6, C-3; δ_C 150.7, C-5; δ_C 135.1, C-6; δ_C 129.5, C-7). The analysis of HMBC spectrum (**Figure S20**) determined the connectivity of these units. The methoxy protons of OCH_3 -9 and OCH_3 -10 had an HMBC correlation to C-3 and C-5, respectively, on the aromatic moiety. HMBC correlations from H-8 to C-1 and from H-1 to C-8 and the chemical shift of these hydrogen and carbon atoms in the 1H and ^{13}C NMR spectra secured the presence of an oxygen bridge between both carbon atoms and hence of a heteroaromatic ring in the structure of **3**. Finally, the chemical shift of C-6 (δ_C 135.1) was indicative of the presence of a hydroxyl group at this carbon, completing the initially determined chemical formula. The absence of specific rotation in the sample confirmed the existence of a mixture of enantiomers in this sample. Most probably, compound **3** is formed by nucleophilic attack of a primary hydroxyl group at C-8 to an aldehyde carbonyl group at C-1 equally favored in both faces of the carbonyl group.

MDN-0209: pale yellow oil; $[\alpha]_D^{26}$ -48.22 (c 0.19 w/v%, CH₂Cl₂); UV (DAD) λ_{\max} 240 nm; IR (ATR) ν cm⁻¹: 3357, 3041, 2959, 2927, 2872, 2728, 1671, 1453, 1377, 1263, 1143, 1089, 1005, 963, 841. HRMS m/z 277.1800 [M+H-H₂O]⁺ (calcd. for C₁₇H₂₅O₃⁺, 277.1798); 312.2171 [M+NH₄]⁺ (calcd. for C₁₇H₃₀NO₄⁺, 312.2169); 611.3555 [2M+Na]⁺ (calcd. for C₃₄H₅₂NaO₈⁺, 611.3554); for ¹H and ¹³C NMR data, see Table S1.

Table S1. ¹H (500 MHz) and ¹³C (125 MHz) NMR Data for Compounds 1 and 2 in CD₃OD

Position	1		2	
	δ_C , type	δ_H , mult. (<i>J</i> in Hz)	δ_C , type	δ_H , mult. (<i>J</i> in Hz)
1	61.1, C		66.2, C	
2	67.6, CH	4.43, s	66.7, CH	4.77, s
3	134.0, C		151.1, C	
4	131.5, C		131.2, C	
5	65.2, CH	4.61, s	198.1, C	
6	59.5, CH	3.21, br t (1.7)	60.2, CH	3.30, s
7a	30.9, CH ₂	2.83, dd (15.2, 7.4)	29.9, CH ₂	2.94, dd (15.4, 7.8)
7b		2.37, dd (15.2, 7.4)		2.45, dd (15.4, 7.2)
8	118.9, CH	5.23, tt (7.4, 1.4)	118.2, CH	5.22, tm (7.5, 1.4)
9	136.2, C		137.1, C	
10	18.1, CH ₃	1.67, s	18.0, CH ₃	1.67, br s
11	26.0, CH ₃	1.74, s	25.9, CH ₃	1.75, br s
12	126.9, CH	6.42, d (15.7)	122.0, CH	6.06, m
13	134.9, CH	6.08, dt (15.7, 7.0)	140.1, CH	6.05, m
14	36.6, CH ₂	2.15, c (7.0)	36.8, CH ₂	2.14, m
15	23.5, CH ₂	1.47, m (7.4)	23.3, CH ₂	1.46, m (7.3)
16	14.0, CH ₃	0.94, t (7.4)	14.0, CH ₃	0.94, t (7.5)
17a	59.9, CH ₂	4.39, d (12.3)	60.4, CH ₂	4.47, d (13.4)
17b		4.15, d (12.3)		4.32, d (13.4)

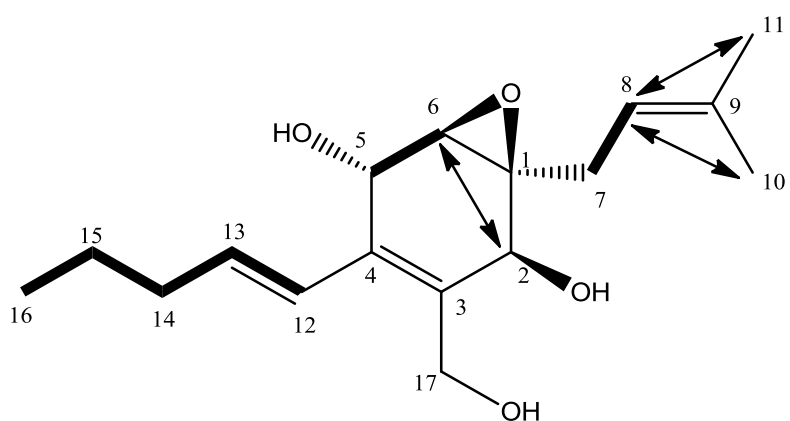


Figure S1. Key ^1H - ^1H COSY (bold lines, along range H \leftrightarrow H) correlations for compound **1**

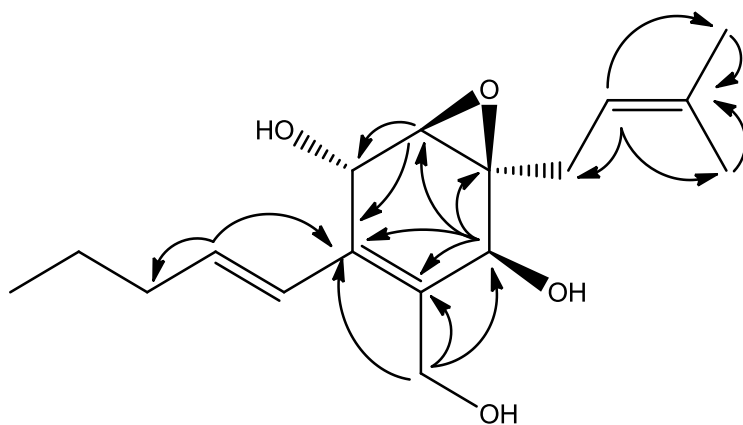


Figure S2. Key HMBC (H \rightarrow C) correlations for compound **1**

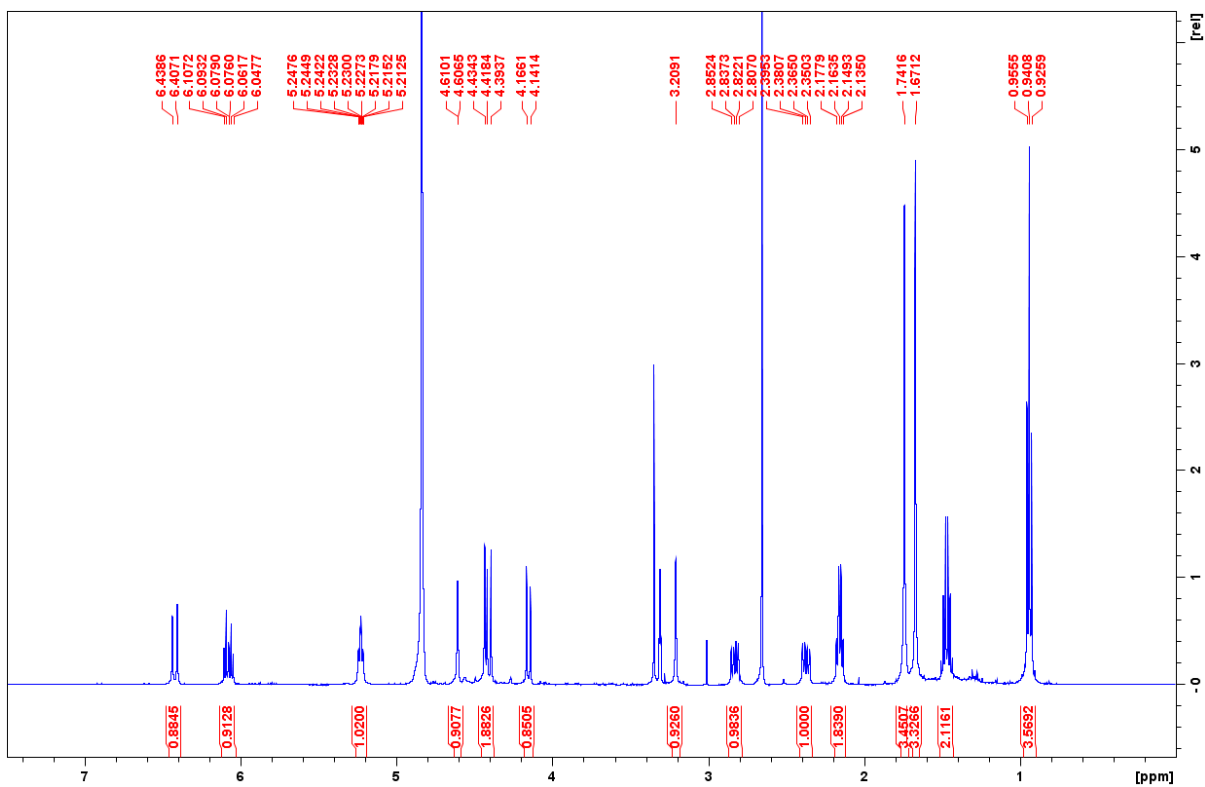


Figure S3. ^1H NMR spectrum (500MHz) of **1** in CD_3OD .

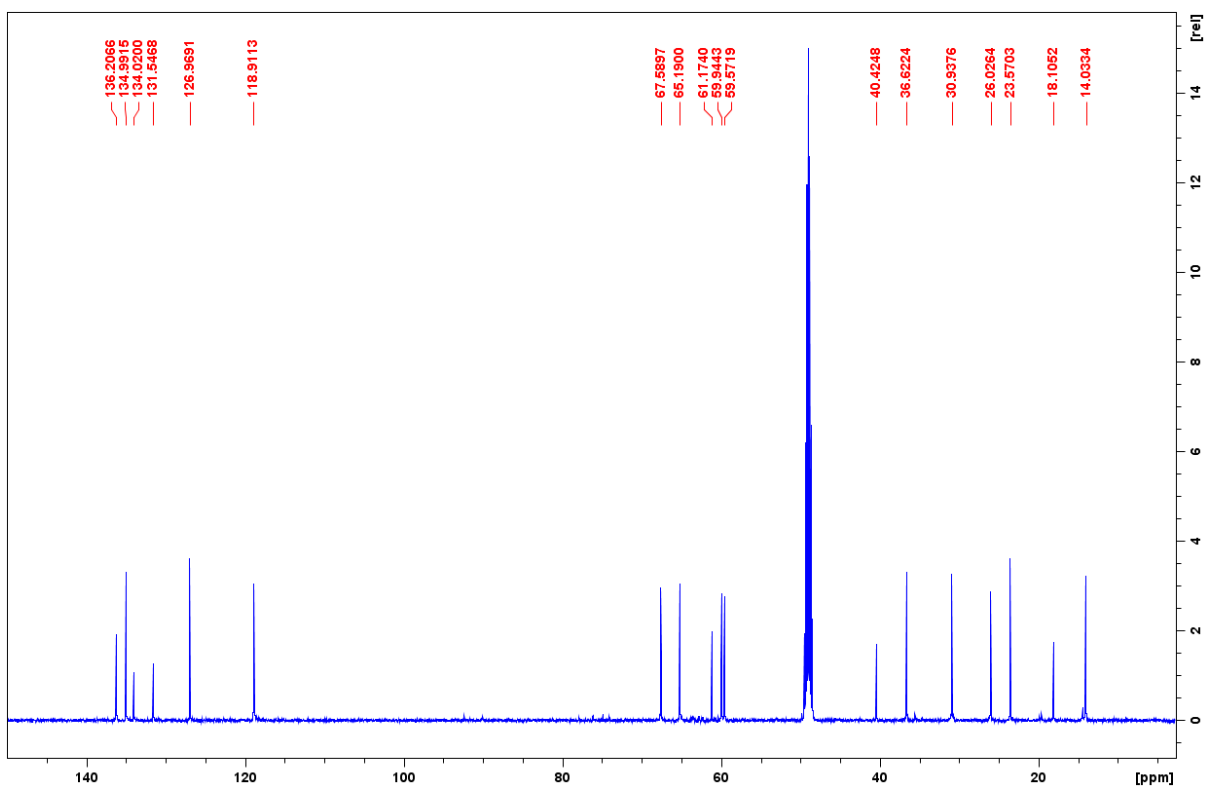


Figure S4. ^{13}C NMR spectrum (125MHz) of **1** in CD_3OD .

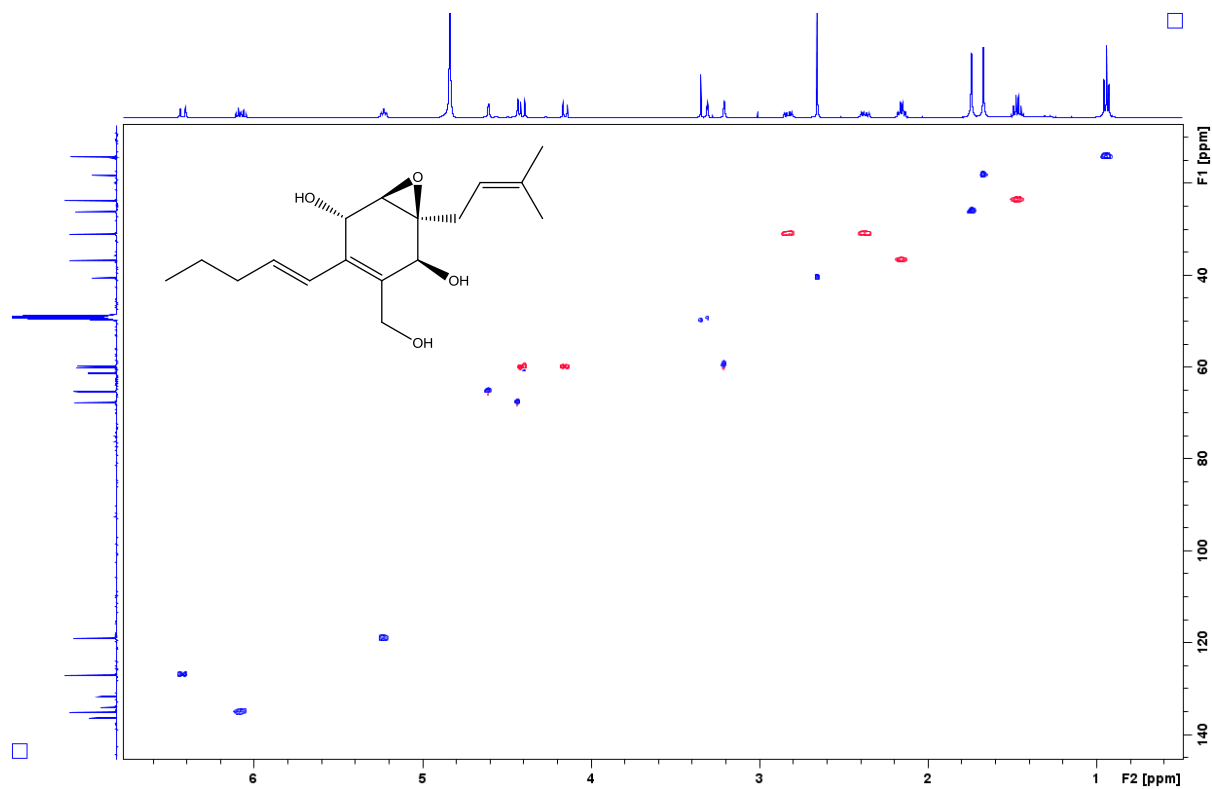


Figure S5. HSQC spectrum (500MHz) of **1** in CD₃OD.

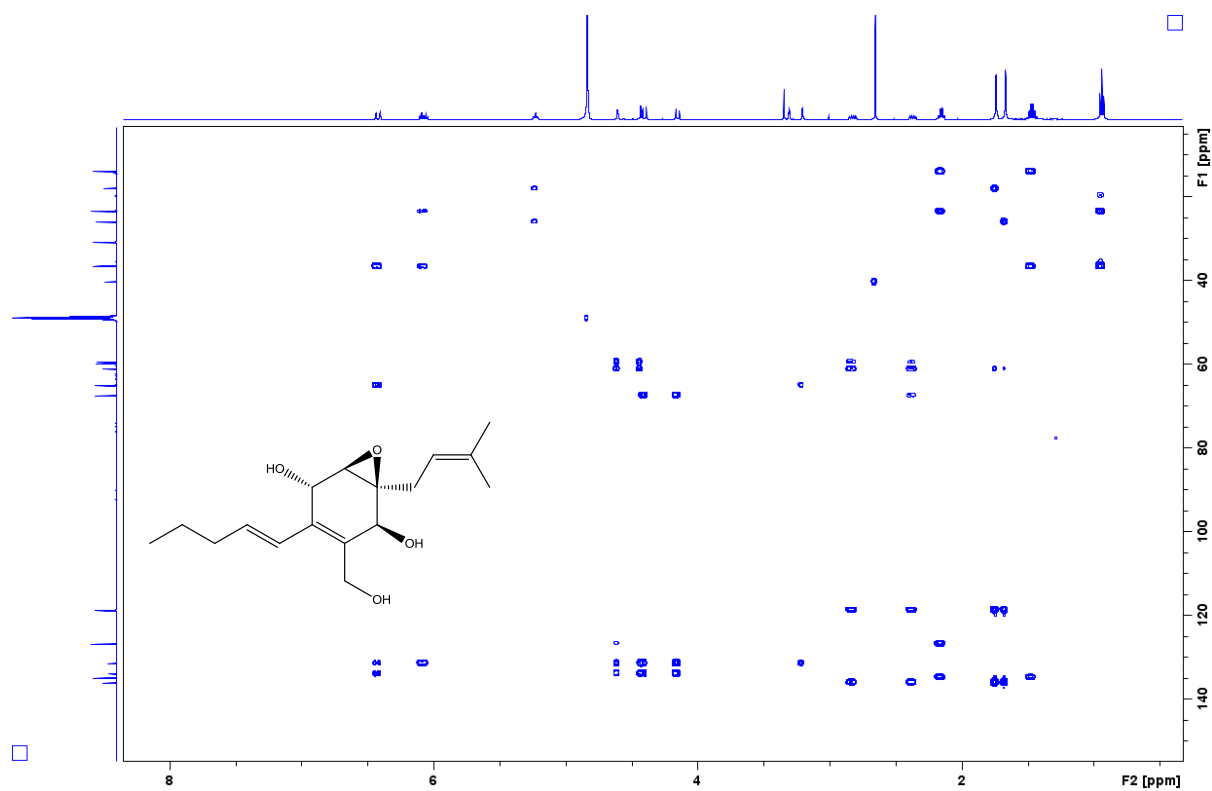


Figure S6. HMBC spectrum (500MHz) of **1** in CD₃OD.

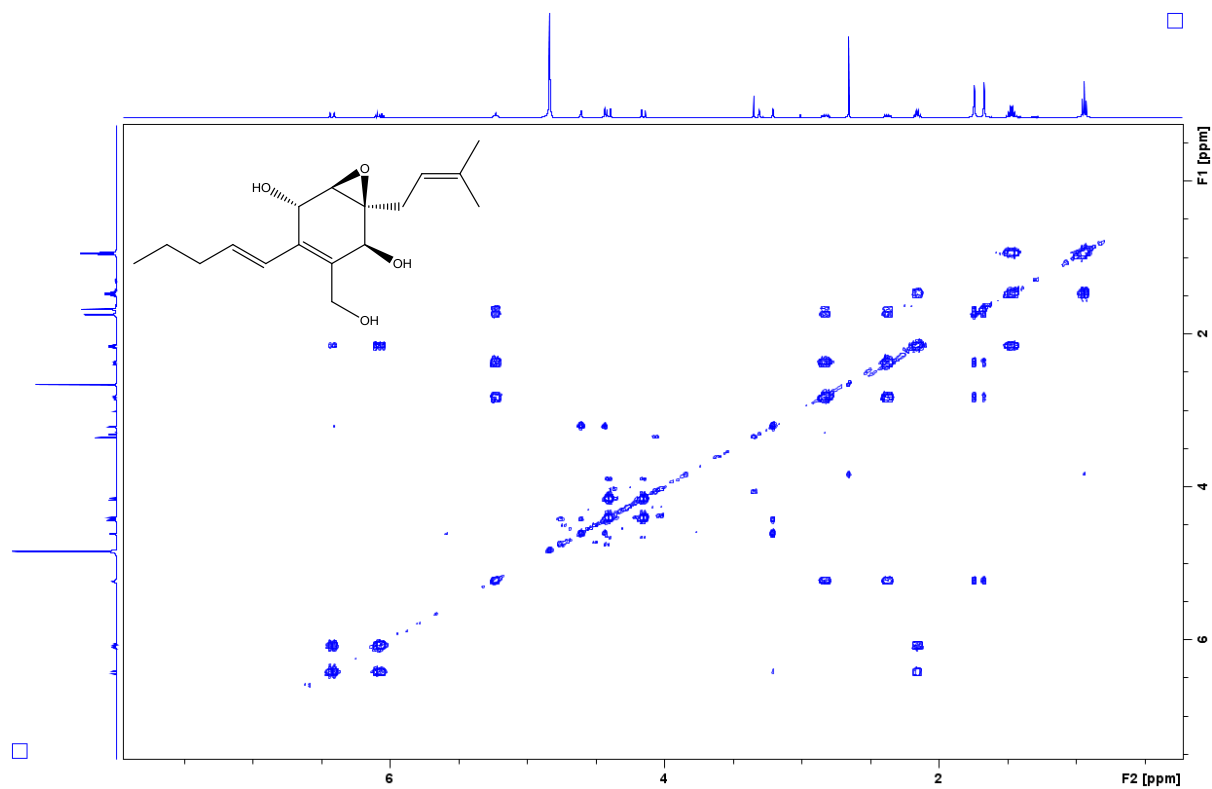


Figure S7. COSY spectrum (500MHz) of **1** in CD₃OD.

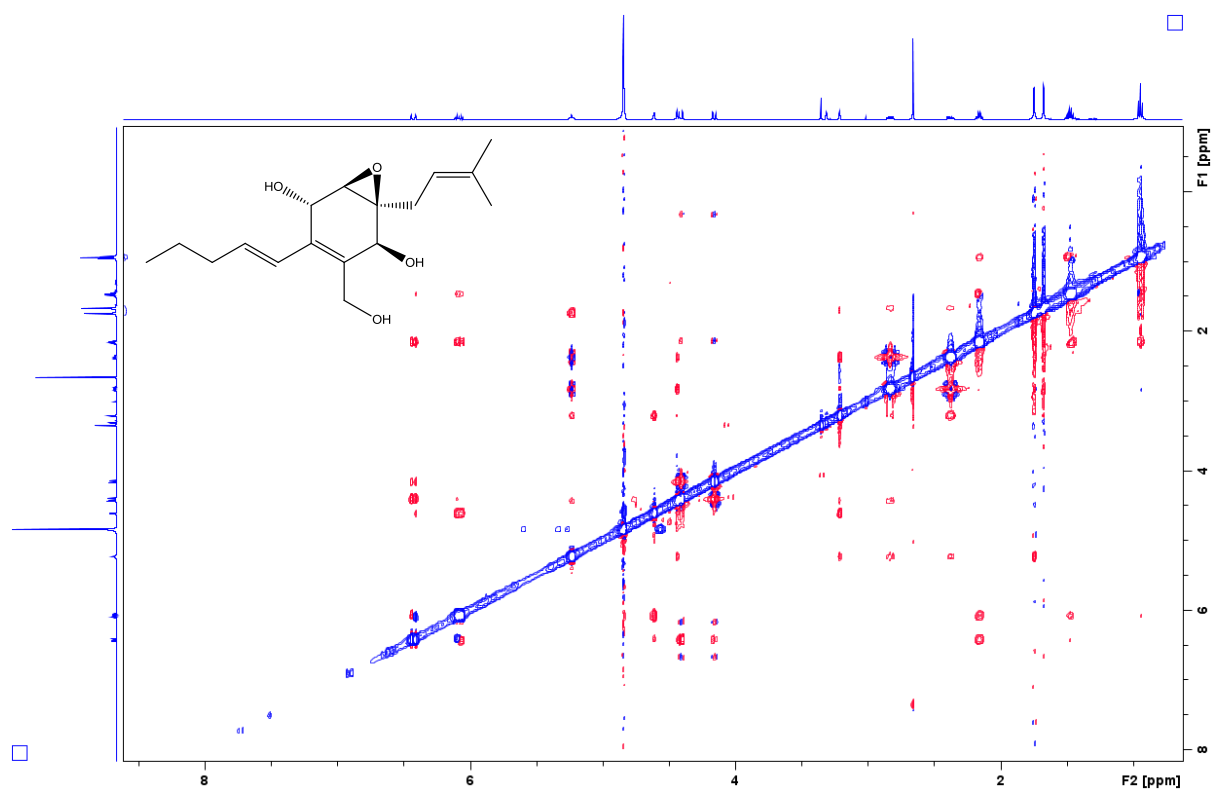


Figure S8. NOESY spectrum (500MHz) of **1** in CD₃OD.

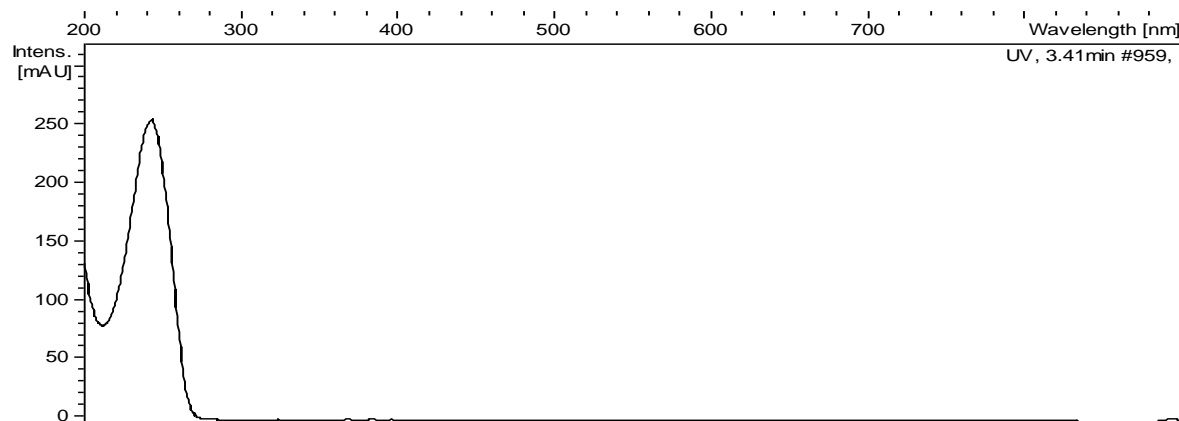


Figure S9. UV spectrum of **1**

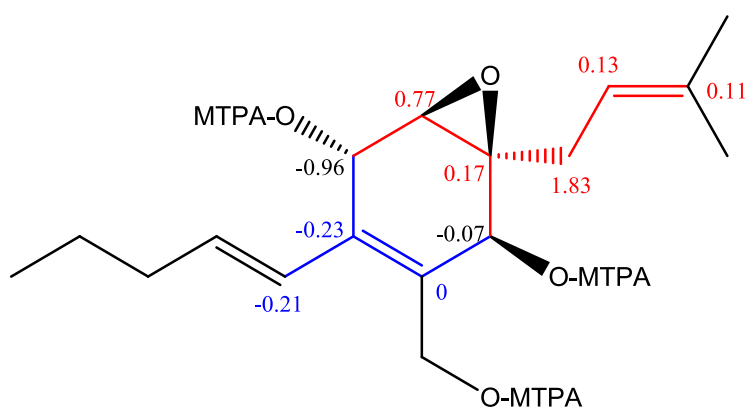


Figure S10. $\Delta\delta^{\text{SR}}$ values of MTPA-esters of compound **1**

MDN-0210 (2): White and amorphous solid; $[\alpha]_D^{26}$ 95.62 (c 0.04w/v%, CH_2Cl_2); UV (DAD) λ_{max} 210nm, 280nm; IR (ATR) ν cm^{-1} : 3420, 2959, 2928, 2872, 1672, 1453, 1377, 1025, 969, 841. HRMS m/z 275.1641 $[\text{M}+\text{H}-\text{H}_2\text{O}]^+$ (calcd. for $\text{C}_{17}\text{H}_{23}\text{O}_3^+$, 275.1642); 293.1747 $[\text{M}+\text{H}]^+$ (calcd. for $\text{C}_{17}\text{H}_{25}\text{O}_4^+$, 293.1747); 310.2007 $[\text{M}+\text{NH}_4]^+$ (calcd. for $\text{C}_{17}\text{H}_{28}\text{NO}_4^+$, 310.2013); 607.3234 $[2\text{M}+\text{Na}]^+$ (calcd. for $\text{C}_{34}\text{H}_{48}\text{NaO}_8^+$, 607.3241); for ^1H and ^{13}C NMR data, see Table S1.

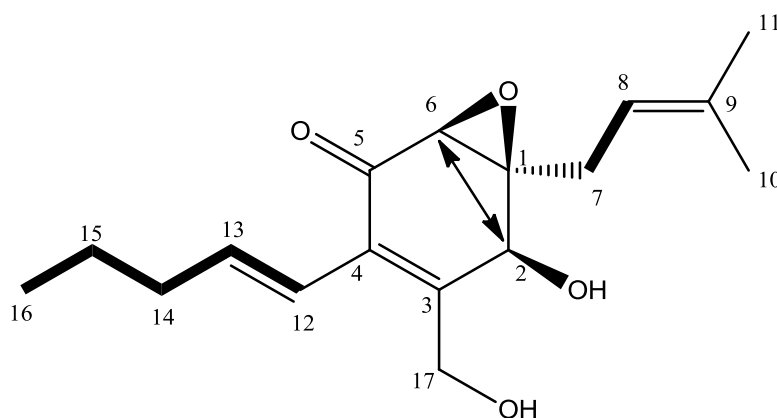


Figure S11. Key $^1\text{H}-^1\text{H}$ COSY (bold lines, and long range $\text{H}\leftrightarrow\text{H}$) correlations for compound **2**.

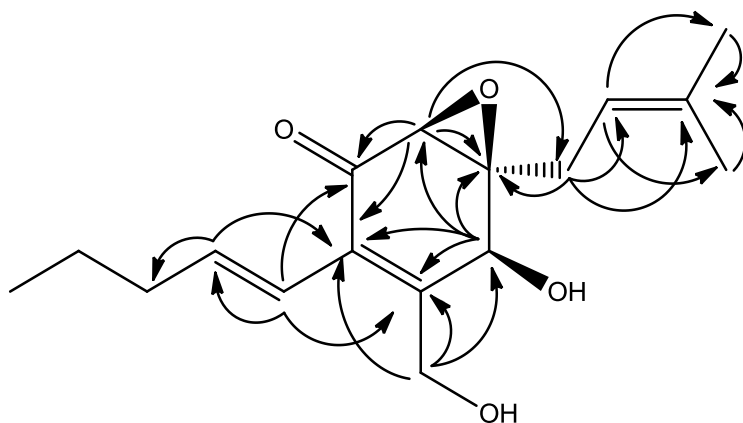


Figure S12. Key HMBC (H→C) correlations for compound **2**.

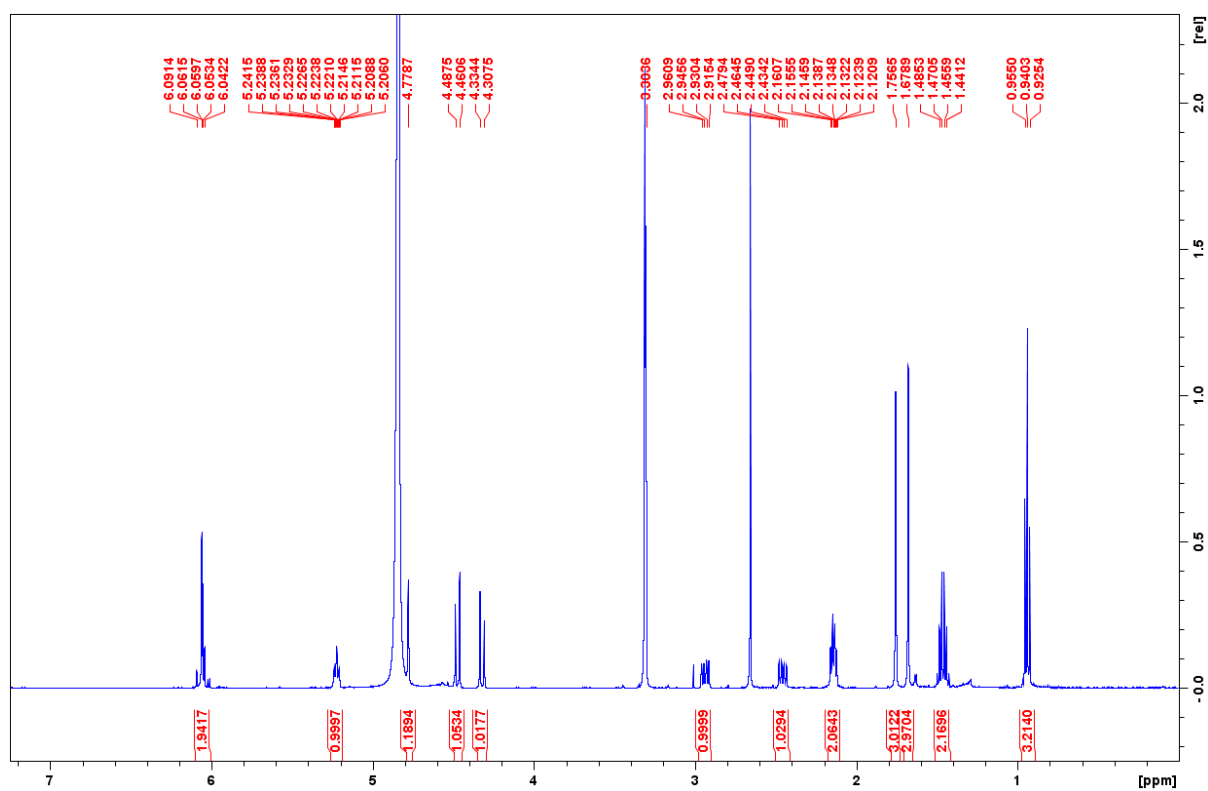


Figure S13. ^1H NMR spectrum (500MHz) of **2** in CD_3OD .

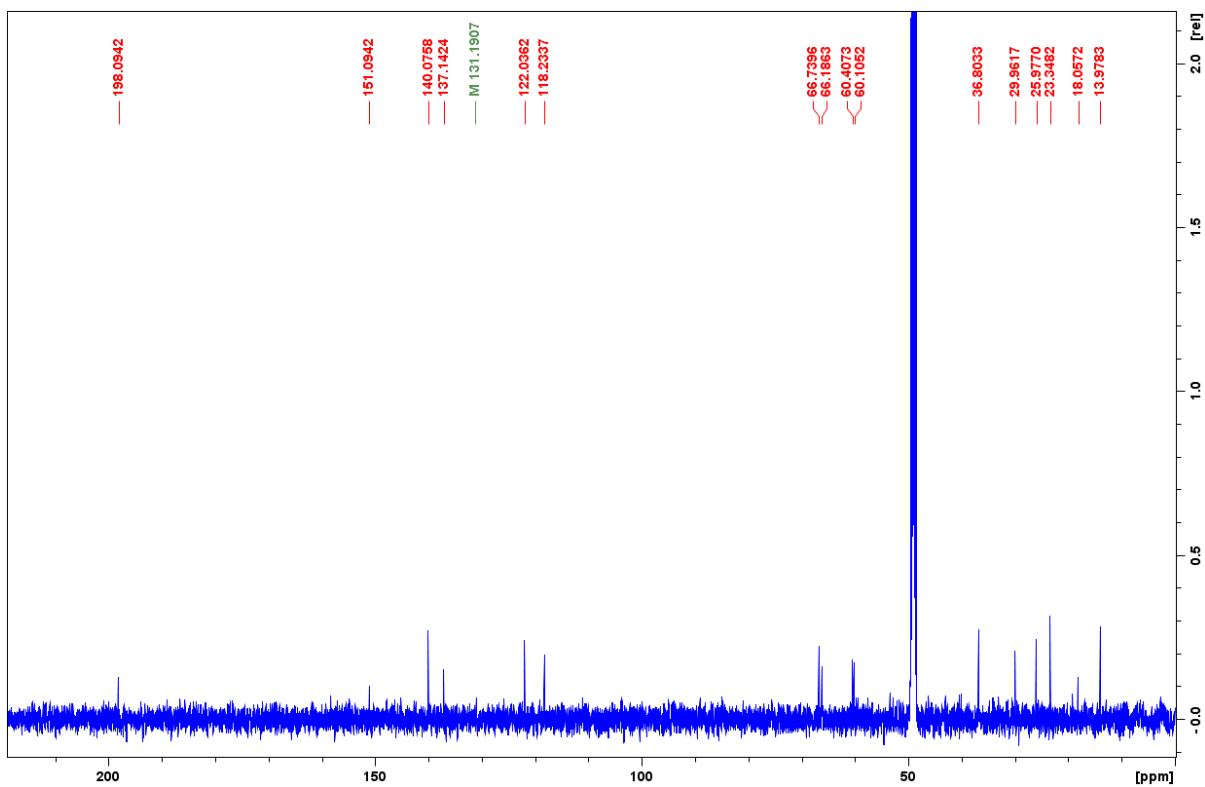


Figure S14. ^{13}C NMR spectrum (125MHz) of **2** in CD_3OD .

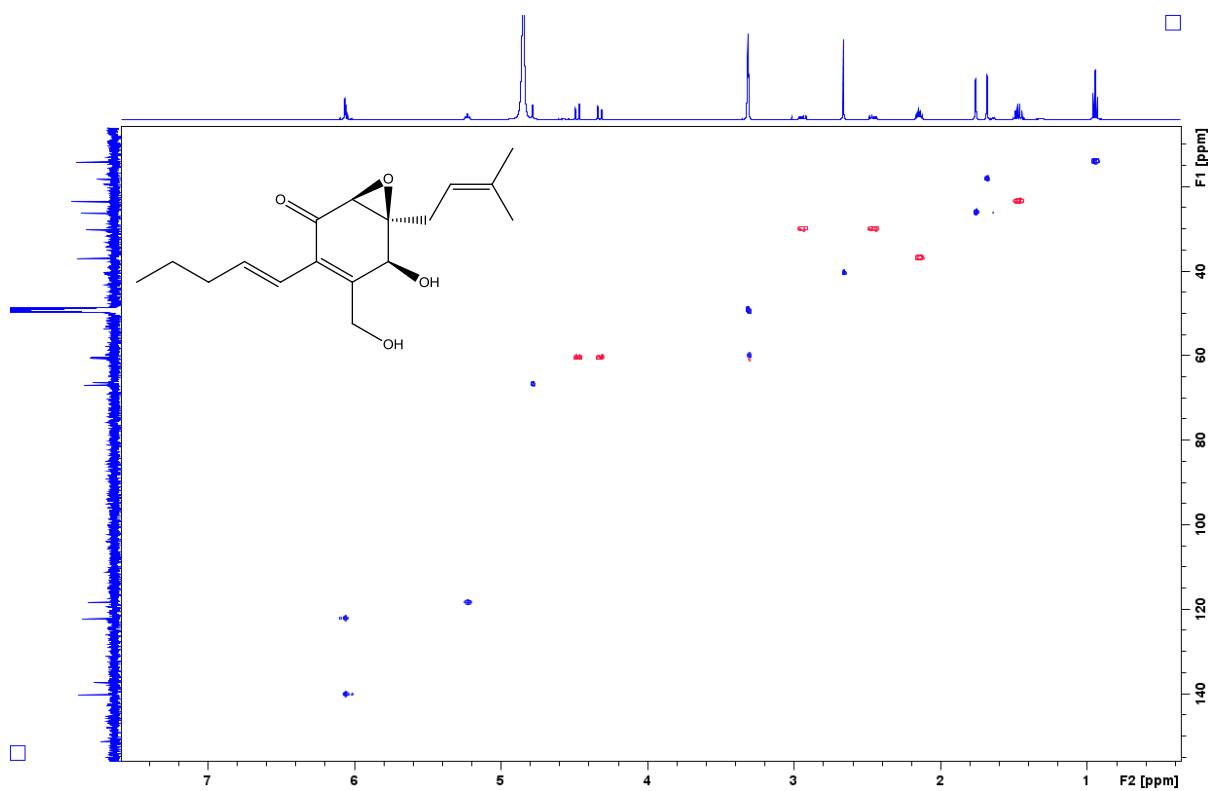


Figure S15. HSQC spectrum (500MHz) of **2** in CD_3OD .

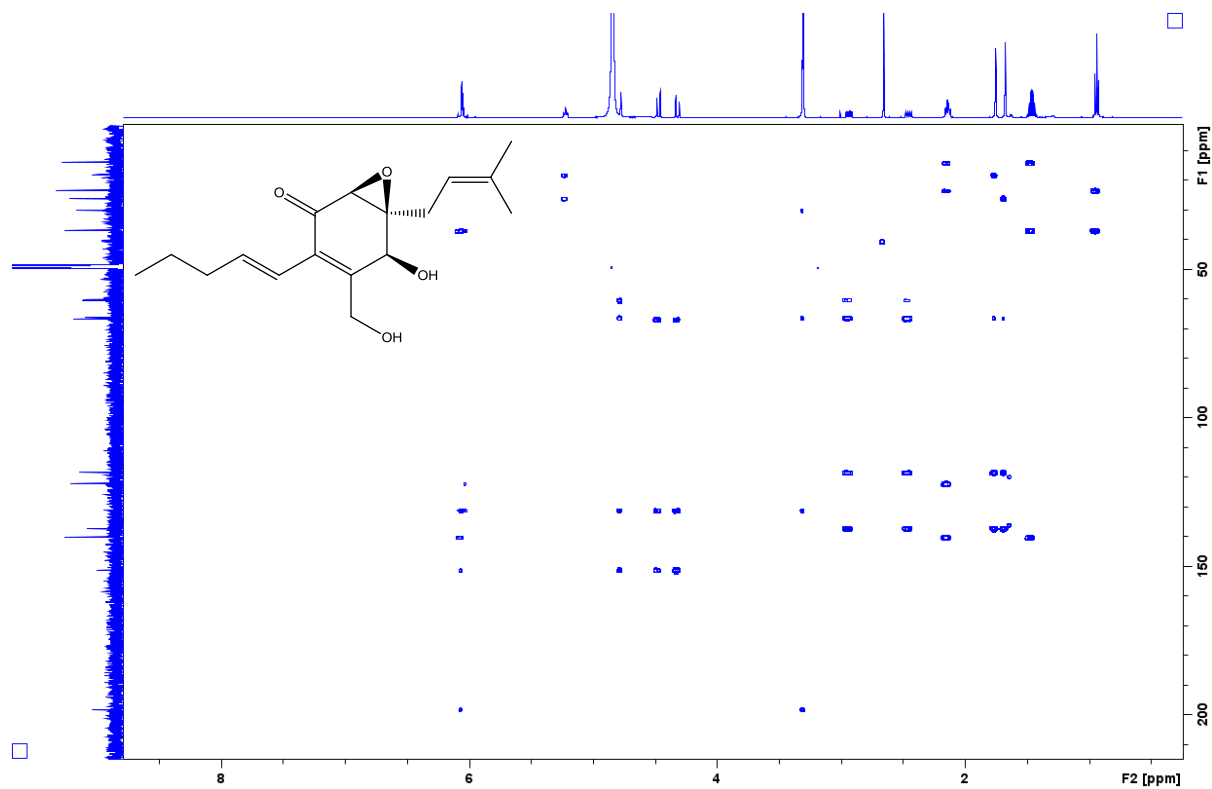


Figure S16. HMBC spectrum (500MHz) of **2** in CD₃OD.

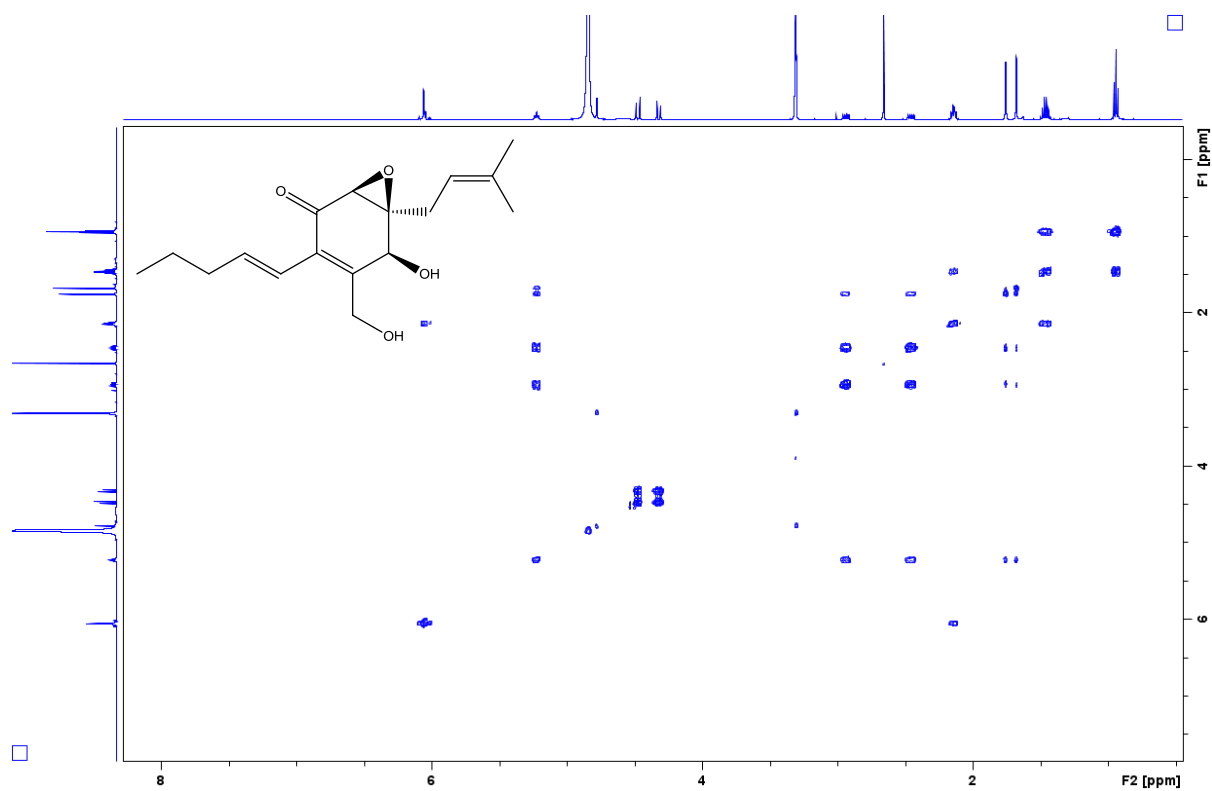


Figure S17. COSY spectrum (500MHz) of **2** in CD₃OD.

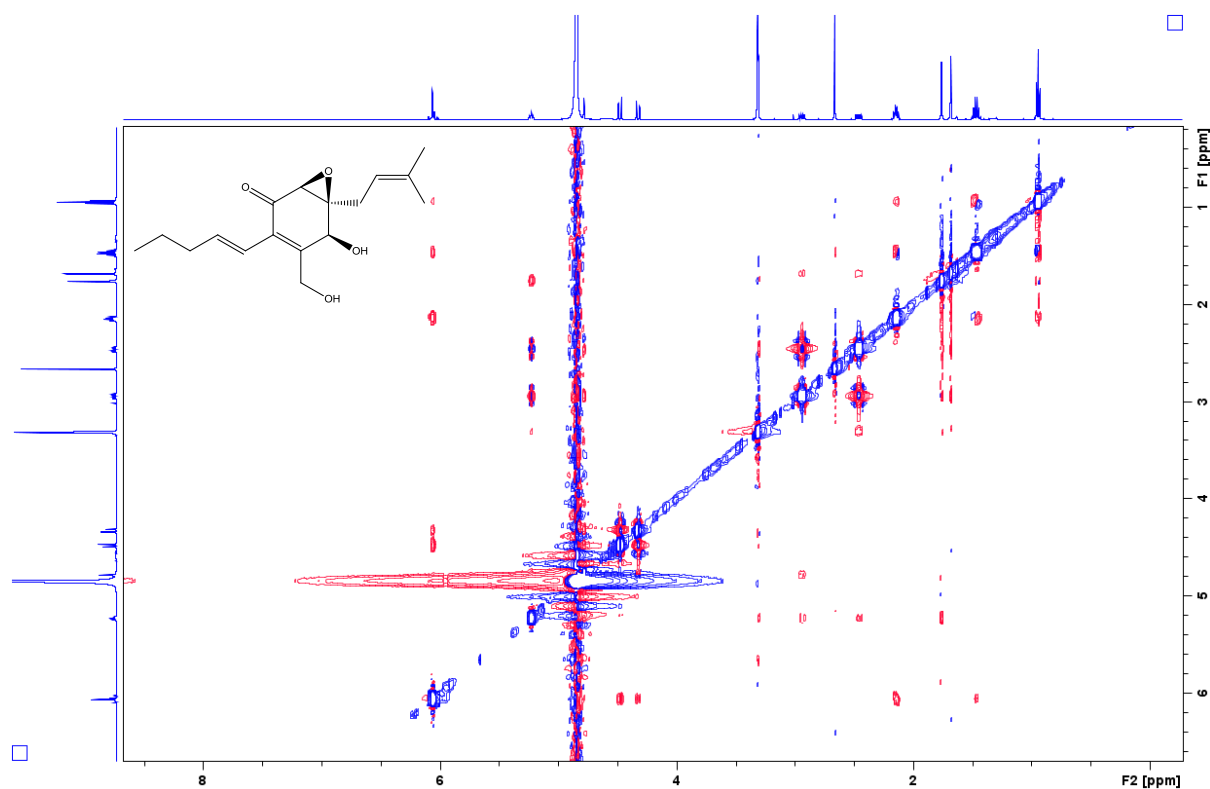


Figure S18. NOESY spectrum (500MHz) of **2** in CD₃OD.

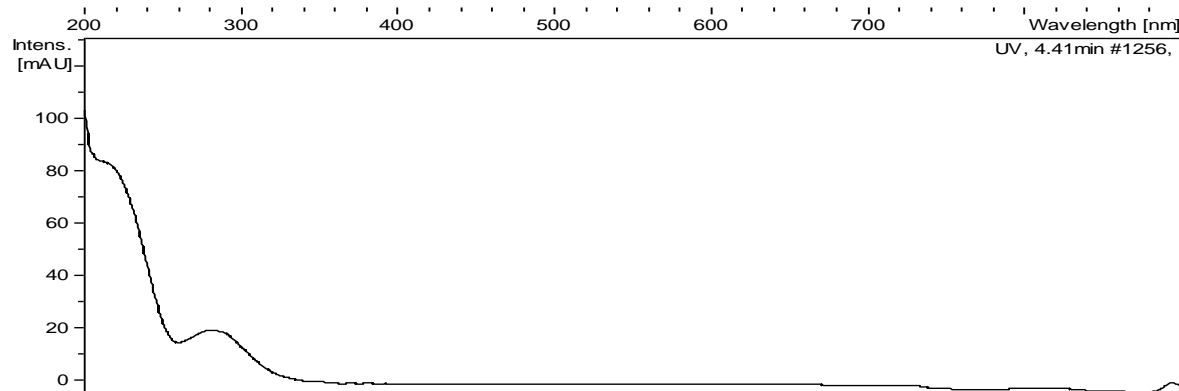


Figure S19. UV spectrum of **2**

MDN-0211 (3): White and amorphous solid; $[\alpha]^{25}_D$ 0.00 (c 0.16w/v%, CH₃OH); UV (DAD) λ_{max} 230nm, 280nm; IR (ATR) ν cm⁻¹: 3363, 2943, 2839, 1643, 1505, 1454, 1438, 1245, 1210, 1133, 1086, 1024. HRESIMS m/z 195.0655 [M+H-H₂O]⁺ (calcd. for C₁₀H₁₁O₄⁺, 195.0652); 235.0574 [M+Na]⁺ (calcd. for C₁₀H₁₂NaO₅⁺, 235.0577); 447.1257 [2M+Na]⁺ (calcd. for C₂₀H₂₄NaO₁₀⁺, 447.1262); for ¹H and ¹³C NMR data, see Table S3:

Table S3. ¹H (500 MHz) and ¹³C (125 MHz) NMR Data for Compound 1 in MeOD

Position	δ_C , type	δ_H , mult. (<i>J</i> in Hz)
1	107.6, CH	6.12, d (1.96)
2	118.6, C	
3	149.6, C	
4	98.1, CH	6.57, s
5	150.7, C	
6	135.1, C	
7	129.5, C	
8a	71.5, CH ₂	5.06, dd (12.8, 1.48)
8b		4.42, d (12.8)
9	56.6, CH ₃	3.81, s
10	57.1, CH ₃	3.88, s

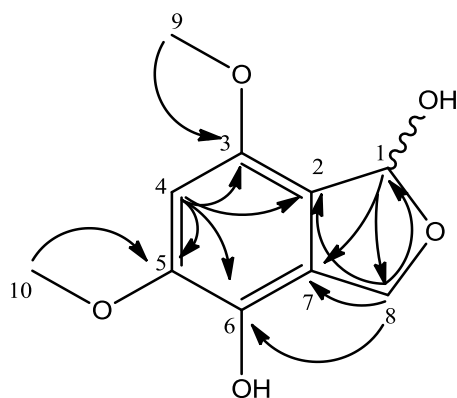


Figure S20. Key HMBC (H→C) correlations for compound **3**

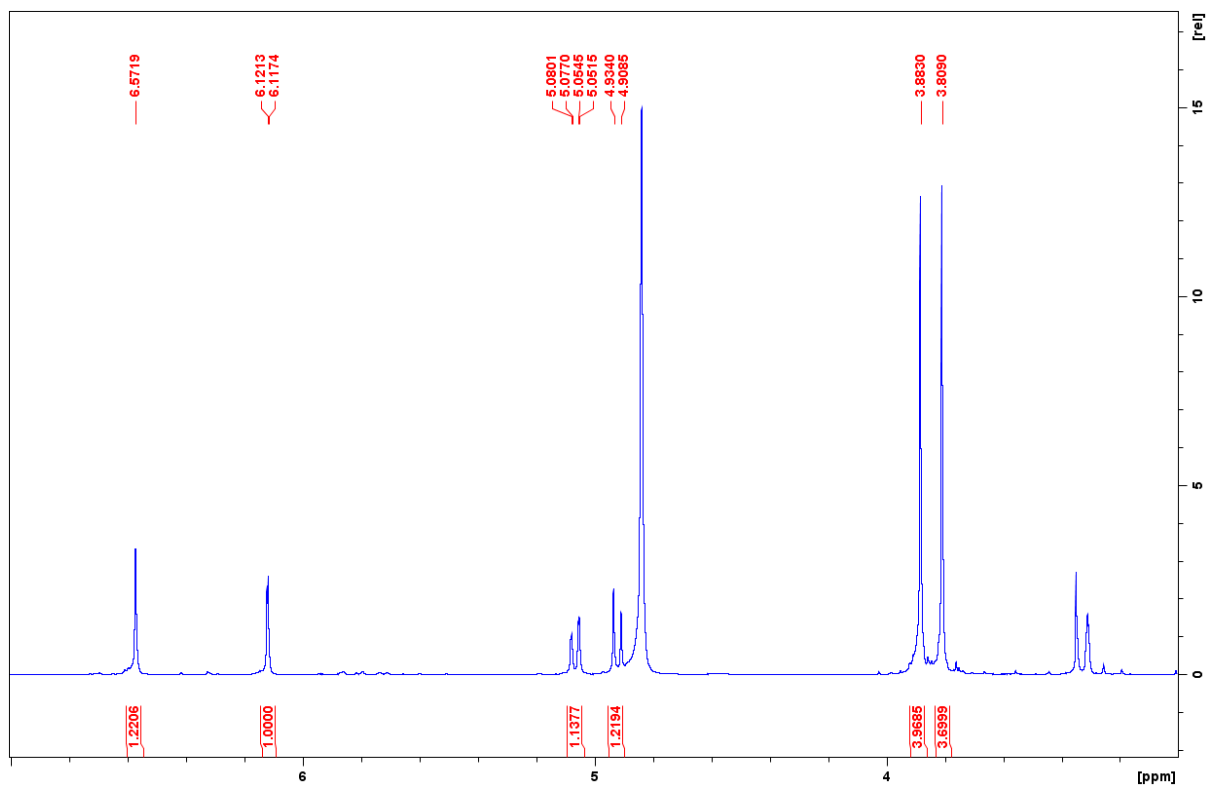


Figure S21. ^1H NMR spectrum (500MHz) of **3** in CD_3OD .

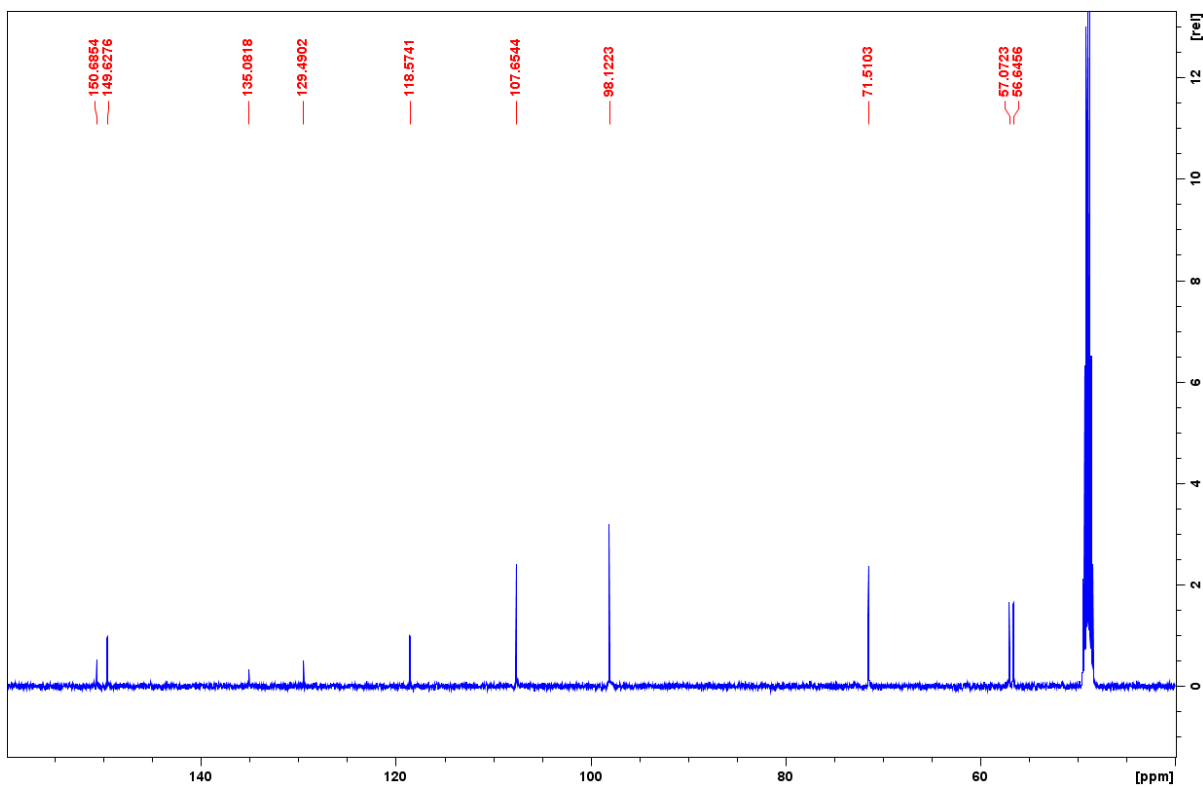


Figure S22. ^{13}C NMR spectrum (125MHz) of **3** in CD_3OD .

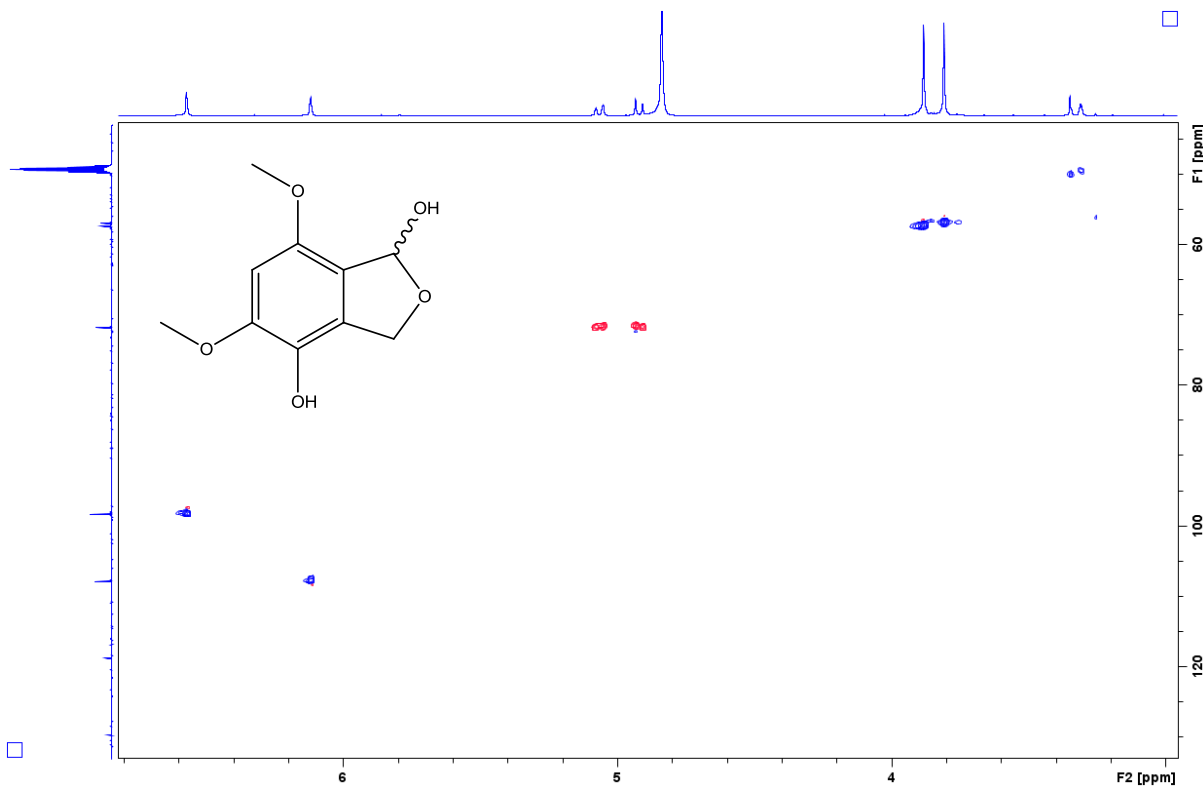


Figure S23. HSQC spectrum (500MHz) of **3** in CD_3OD .

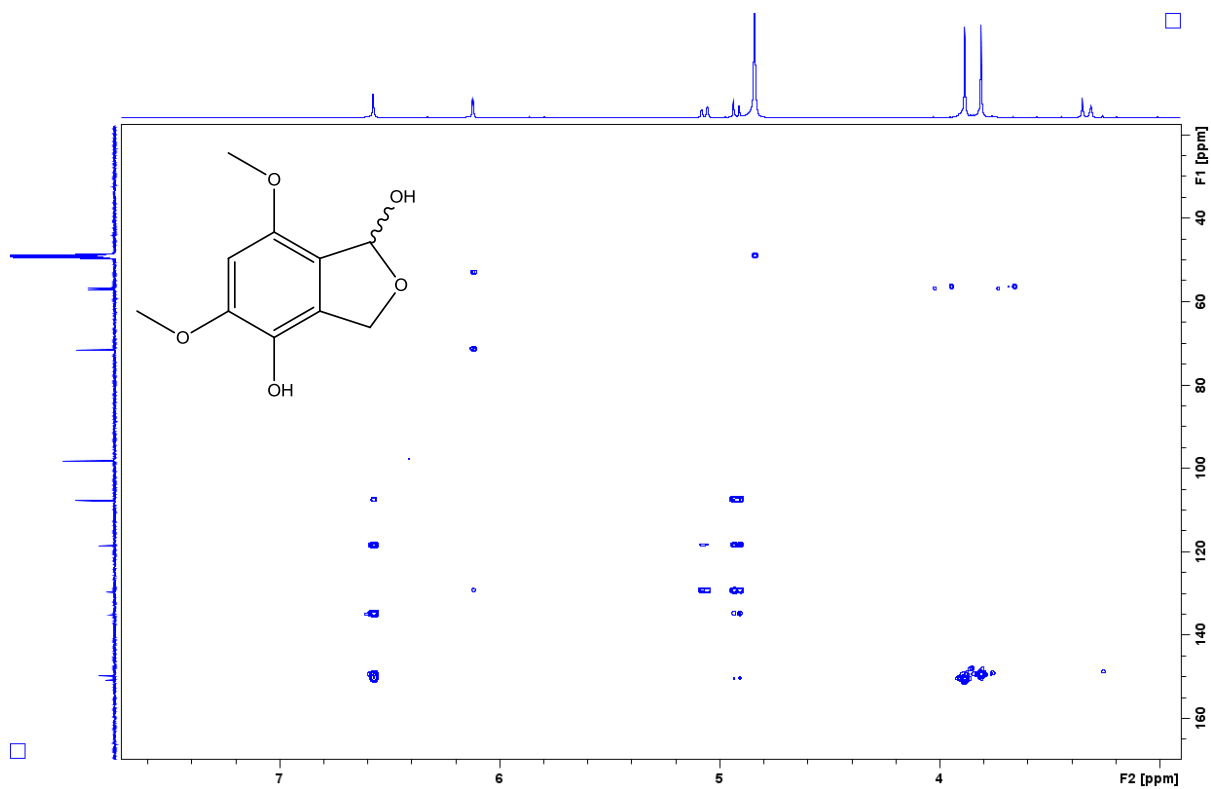


Figure S24. HMBC spectrum (500MHz) of **3** in CD₃OD.

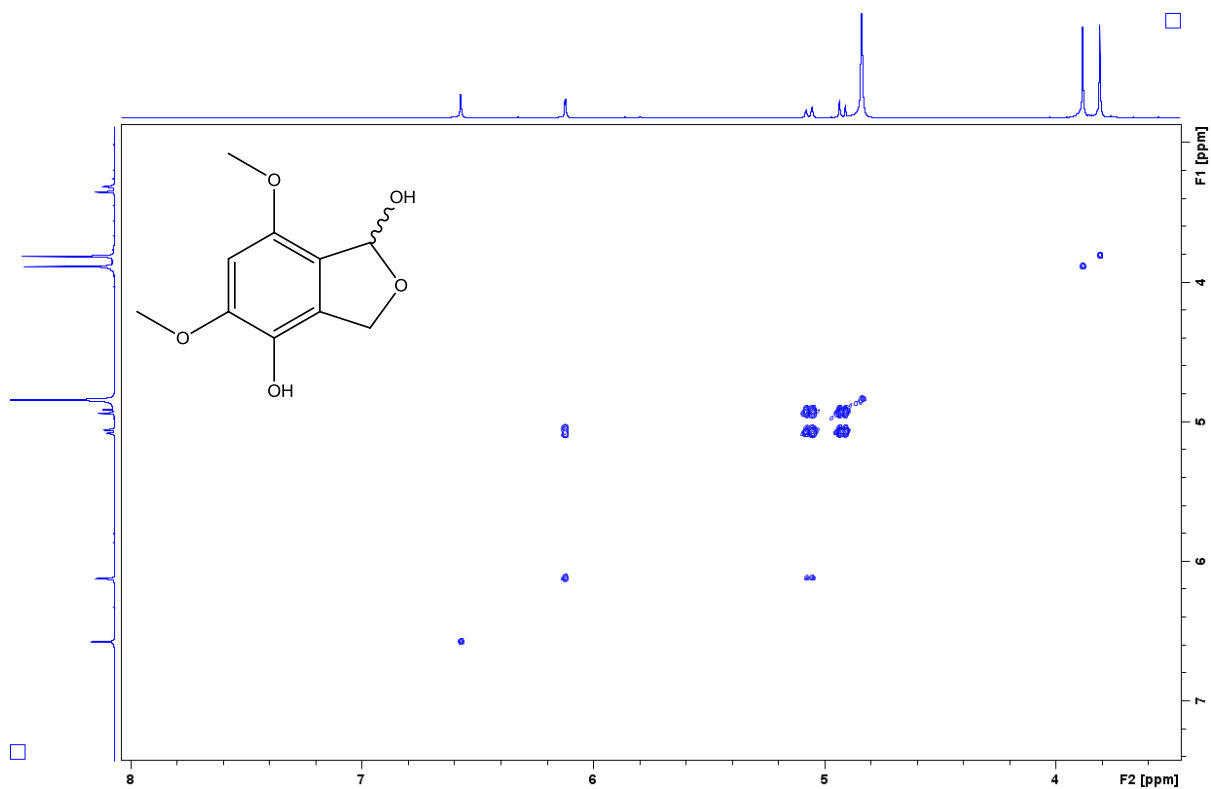


Figure S25. COSY spectrum (500MHz) of **3** in CD₃OD.

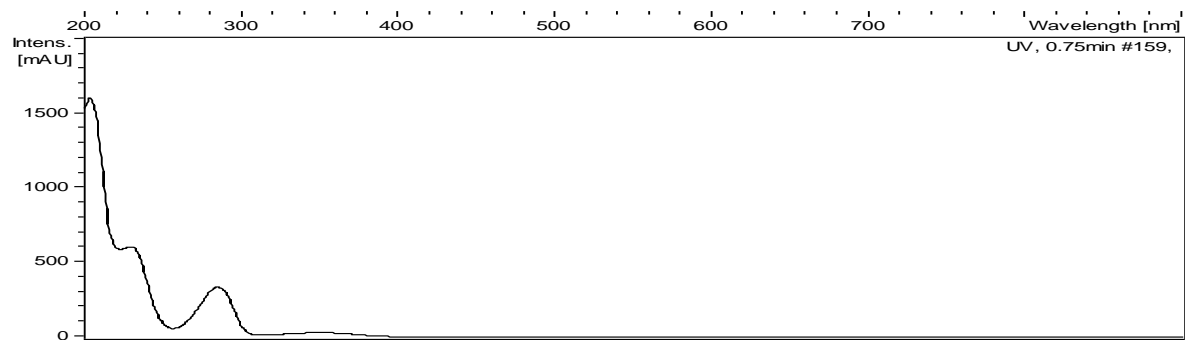


Figure S26. UV spectrum of **3**.

Reference for Supporting Information

1. Seco J.M., Quiñoá E. and Riguera R. The Assignment of Absolute Configuration by NMR. *Chemical Reviews* **104**, 17-117 (2004).