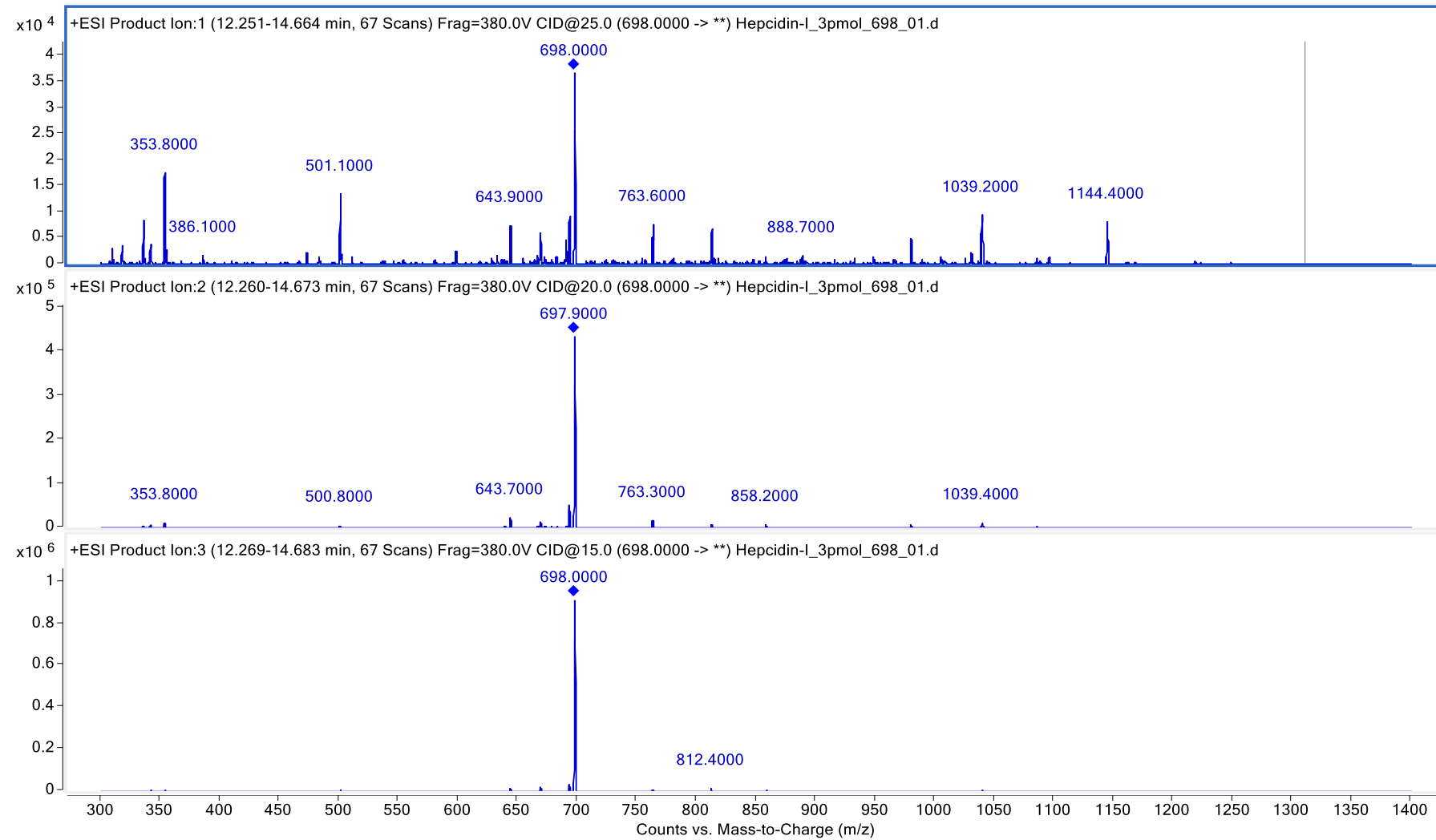


## Figure legends

**Supporting Information Figure 1.** MS/MS spectra according to different collision energy (CE) values. The red lettering in the spectral figure represented the y fragment ion selected for MRM assay. (A) and (B) MS/MS spectra of the 698.0 and 558.6 m/z derived from hepcidin-I. (C) and (D) MS/MS spectra of 543.0 and 651.8 m/z derived from hepcidin-M.

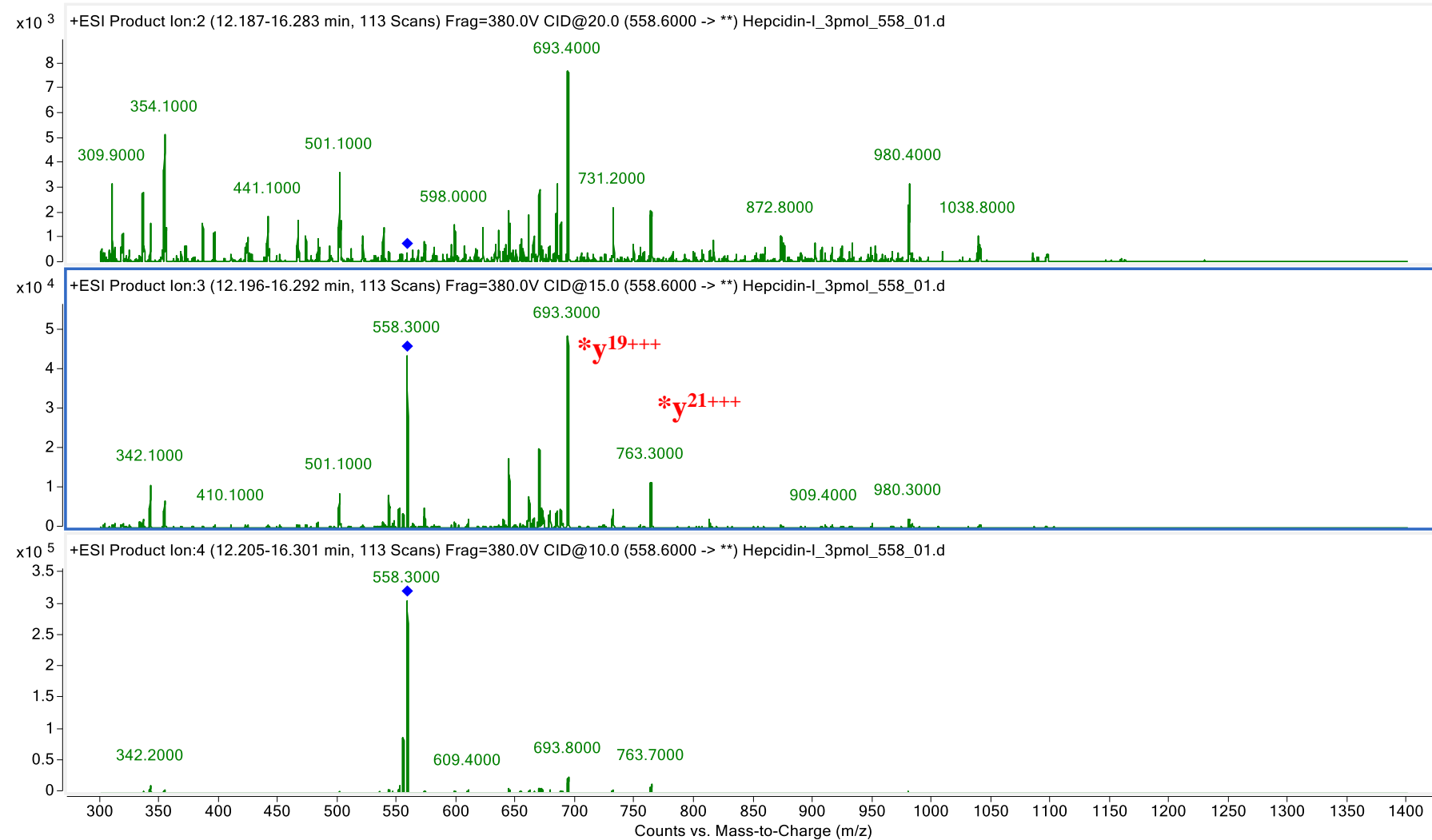
# Supporting Information Figure 1

(A) Hepcidin-I “Product ion scan” 698.0 m/z ( $[M+4]^{4+}$ ) >



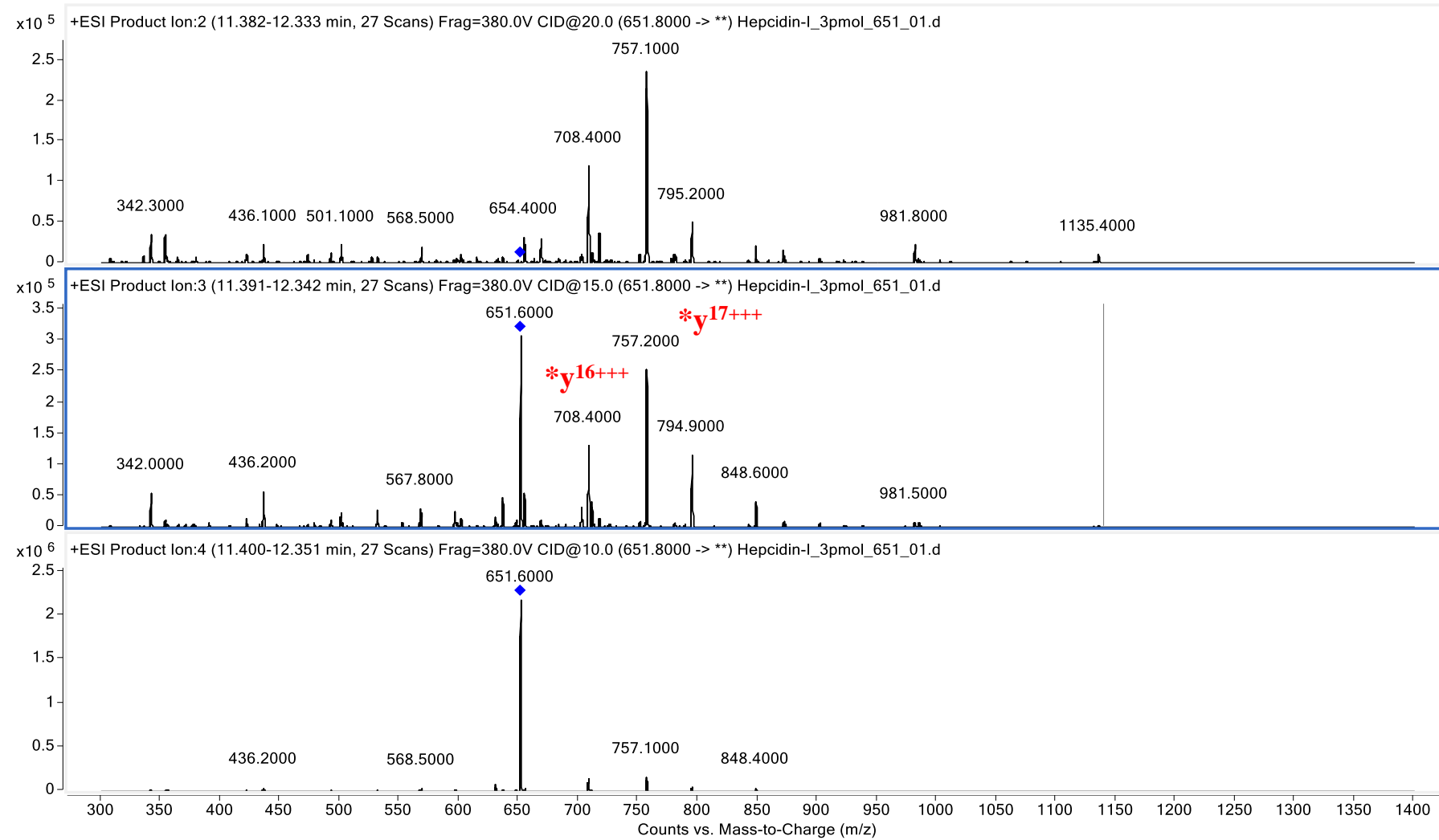
# Supporting Information Figure 1

(B) Hepcidin-I "Product ion scan" 558.6 m/z ( $[M+5]^{5+}$ ) >



# Supporting Information Figure 1

(C) Hepcidin-M “Product ion scan” 651.8 m/z ( $[M+5]^{5+}$ ) >



# Supporting Information Figure 1

(D) Hepcidin-M “Product ion scan” 543.0 m/z ( $[M+6]^{6+}$ ) >

