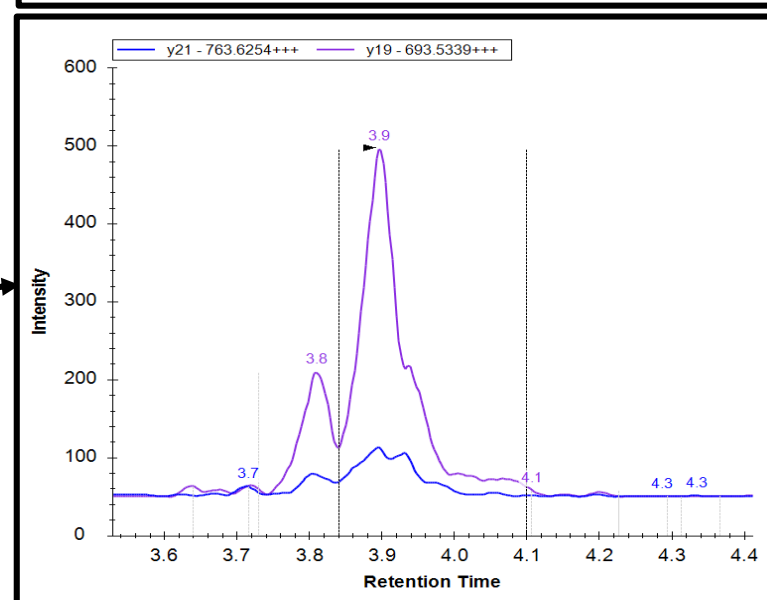
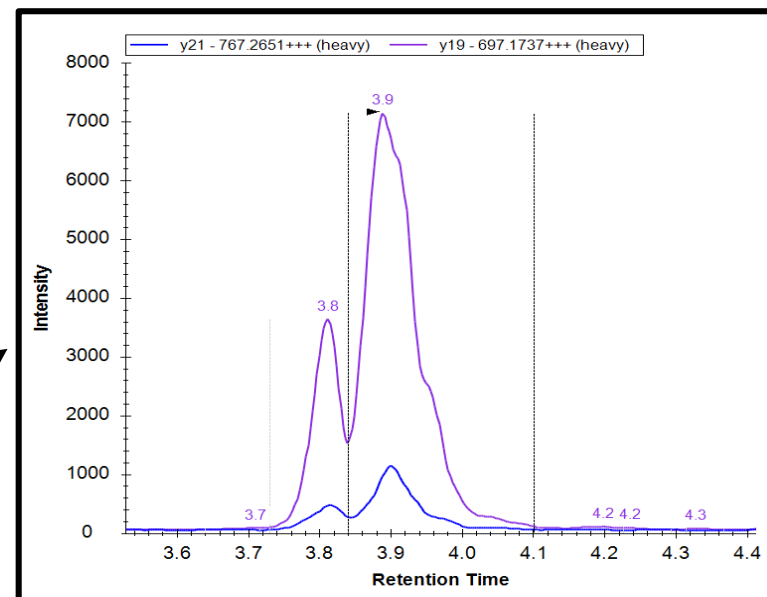
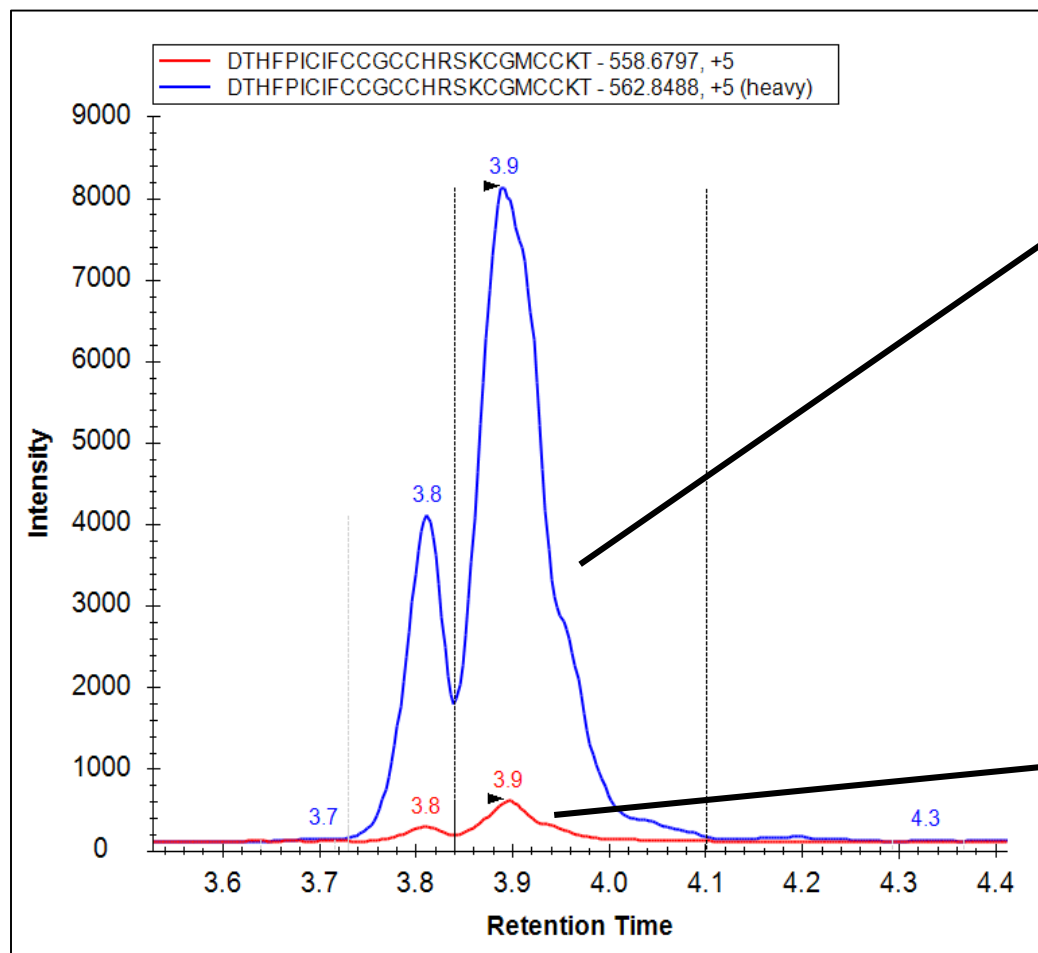


Figure legends

Supporting Information Figure 2. The graphs show the extracted ion chromatography (EIC) of hepcidin-I (A) and hepcidin-M (B) obtained from SRM assay using 800 μ L of serum sample. Each EIC shows the peak intensity of endogenous- and SI-hepcidin (left) and also shows the peak intensity according to transitions (right).

Supporting Information Figure 2

(A)



Supporting Information Figure 2

(B)

