

Supplementary Materials for

Onto2Vec: joint vector-based representation of biological entities and their ontology-based annotations

Fatima Zohra Smaili ¹, Xin Gao ^{1,*} and Robert Hoehndorf ^{1,*}

¹Computer, Electrical and Mathematical Sciences and Engineering Division, Computational Bioscience Research Center, KingAbdullah University of Science and Technology, Thuwal 23955, Saudi Arabia.

*All correspondence should be addressed to: Robert.Hoehndorf@kaust.edu.sa and Xin.Gao@kaust.edu.sa

S1.

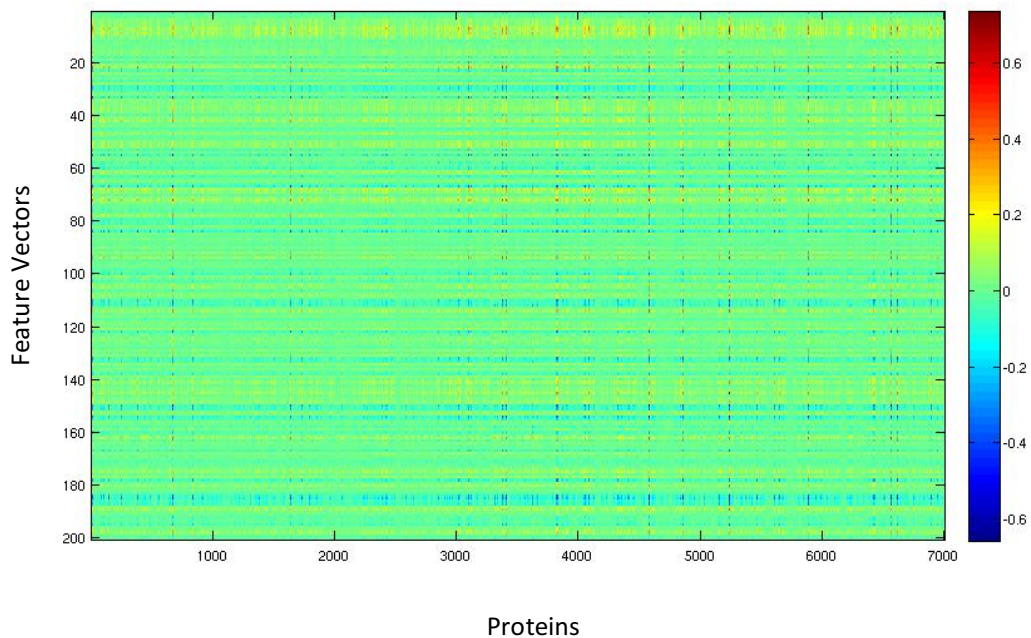


Figure S1. A heatmap illustrating the Onto2Vec vector representations for 7,000 randomly chosen proteins.

