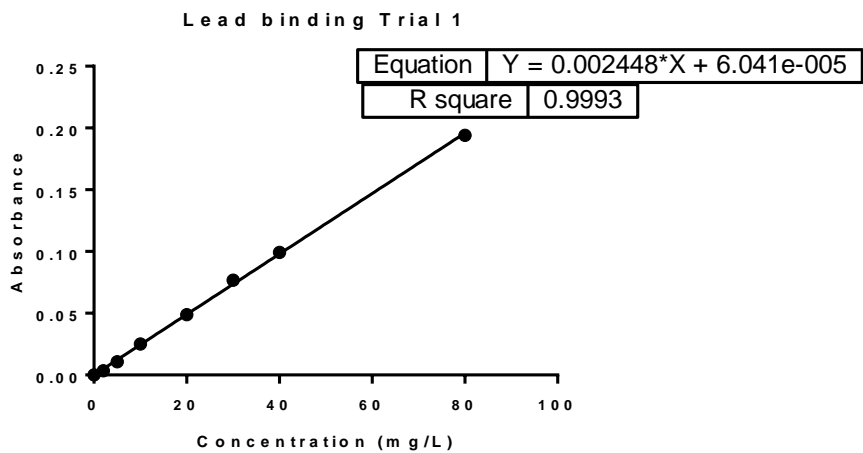


A)



B)

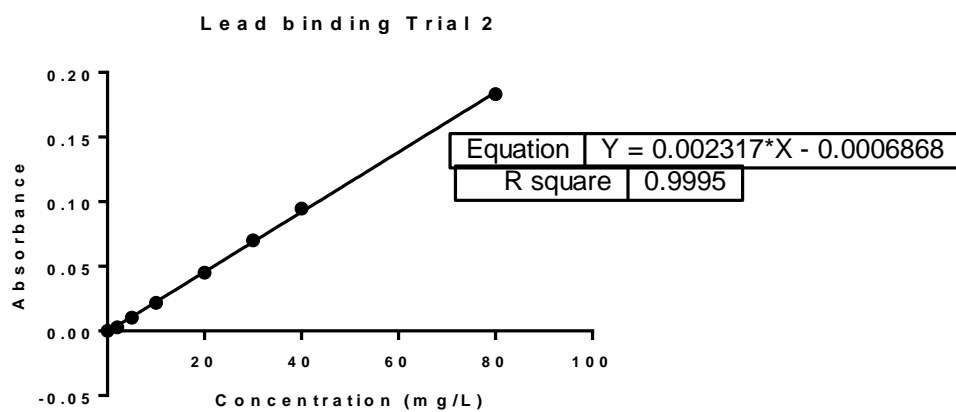
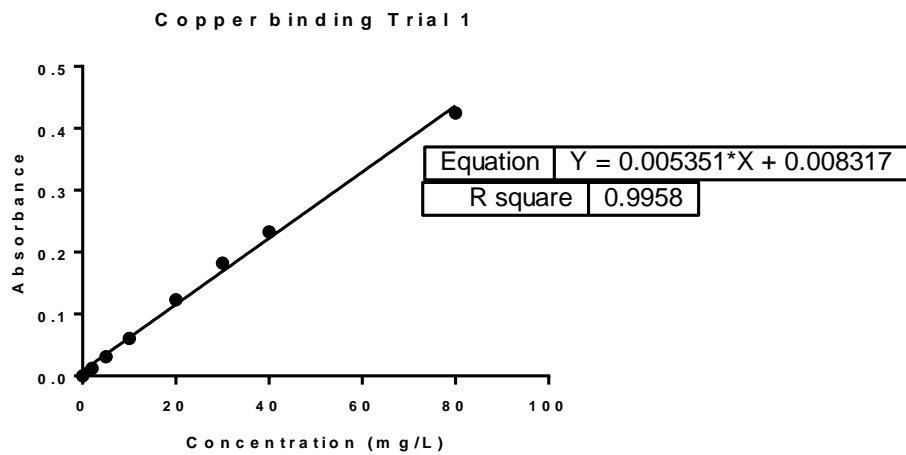


Fig. S1 Calibration curves for Pb^{2+} binding to colominic acid in A) Trial 1 and B) Trial 2. These linear regression curves to determine calculated concentrations during metal binding experiments

A)



B)

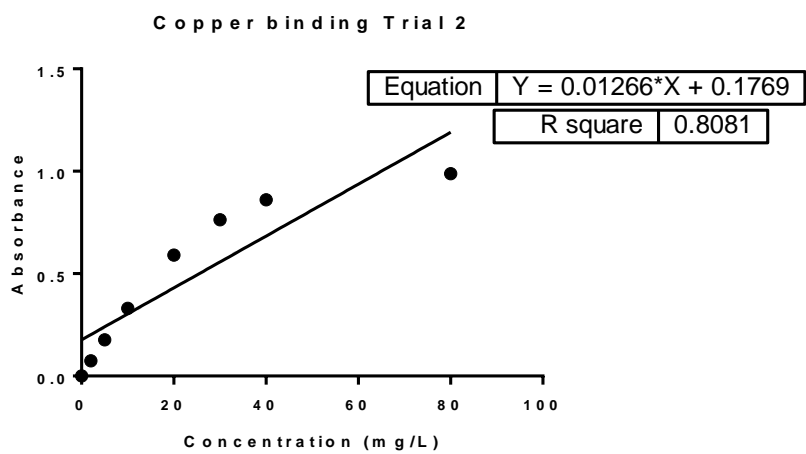


Fig. S2 Calibration curves for Cu^{2+} binding to colominic acid in A) Trial 1 and B) Trial 2. These linear regression curves to determine calculated concentrations during metal binding experiments

Copy of Copper binding Trial 2

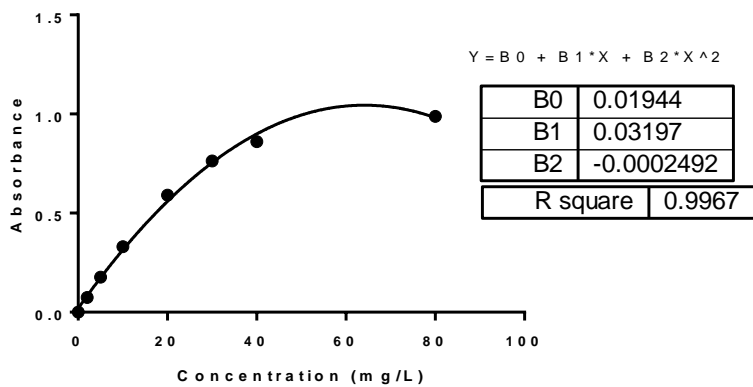


Fig. S3 Second order polynomial fit to Trial 2 standard curve data.

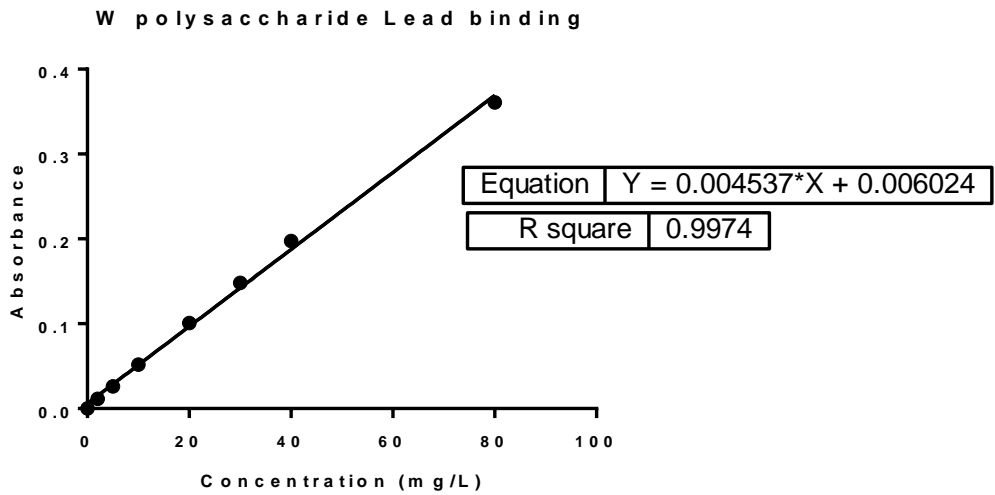


Fig. S4 Calibration curves for Pb^{2+} binding to serogroup W polysaccharide. The linear regression curves to determine calculated concentrations during metal binding experiments