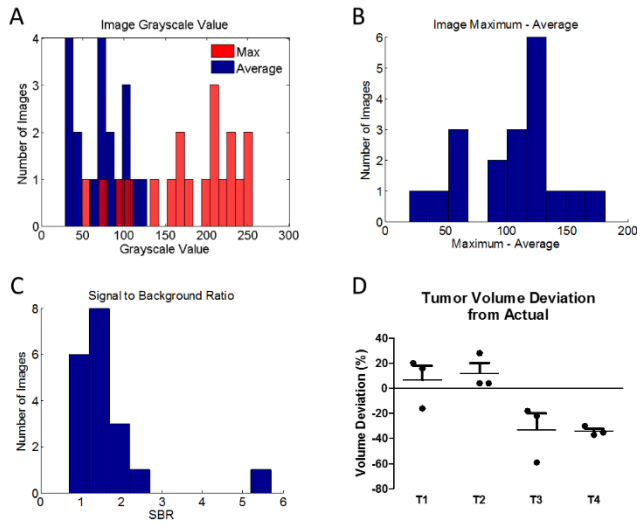


SUPPLEMENTAL DATA



Supplemental Figure 3: A) Maximum and average grayscale values for the images shown in Figure 5A. B) Maximum minus average grayscale values for each of the images demonstrating the range of values analyzed that produced a result. (T4-Wk2 is not included because there was inadequate contrast to generate a tumor volume). C) Signal to background ratios for each of the images. (Assumes that the maximum value is the signal and the average is the background. Calculated: $[M-A]/A$, where M is the maximum and A is the average.) D) Tumor volume deviation from actual for each mouse at Week 4. The PV-TVA was run 3 times for each tumor and the percent deviation was determined using the post mortem water displacement method.