

Table S1. The list of primers

Gene		Sequence of primer	Accession number
<i>GAPDH</i>	forward	5'-CGTGAGTGGAGTCATACTGGAA-3'	XM_017321385.1
	reverse	5'-AACGGATTTGGCCGTATTG-3'	
<i>RIG-I</i>	forward	5'-GCCCTGTACCATGCAGGTTAC-3'	NM_172689.3
	reverse	5'-AGTCCCAACTTTTCGATGGCTT-3'	
<i>TLR3</i>	forward	5'-TTGCGTTGCGAAGTGAAGAA-3'	XM_006509283.3
	reverse	5'-ACTTGCCAATTGTCTGGAAACA-3'	
<i>TLR7</i>	forward	5'-AATCCACAGGCTCACCCATA-3'	XM_011247786.1
	reverse	5'-CAGGTACCAAGGGATGTCCT-3'	
<i>IRF-3</i>	forward	5'-GTGCCTCTCCTGACACCAAT-3'	XM_006540995.3
	reverse	5'-CCAAGATCAGGCCATCAAAT-3'	
<i>IRF-7</i>	forward	5'-AAGCTGGAGCCATGGGTATG-3'	XM_006536214.1
	reverse	5'-GACCCAGGTCCATGAGGAAG-3'	
<i>IFN-α</i>	forward	5'-CTTCCACAGGATCACTGTGTACCT-3'	NM_010505.2
	reverse	5'-TTCTGCTCTGACCACCTCCC-3'	
<i>IFN-β</i>	forward	5'-CTGGAGCAGCTGAATGGAAAG-3'	NM_010510.1
	reverse	5'-CTTCTCCGTCATCTCCATAGGG-3'	
<i>IFN-γ</i>	forward	5'-TGAAAGCCTAGAAAGTCTGAATAAC-3'	NM_008337.4
	reverse	5'-GTTGTGTGCTGATGGCCTGAT-3'	
<i>Mx1</i>	forward	5'-CCAAGTGAATCCTCCTGGAA-3'	NR_003520.1
	reverse	5'-GCCGCACCTTCTCCTCATAG-3'	
<i>Mx2</i>	forward	5'-CGAGAATTGCCAGGGTTTGT-3'	NR_003508.1
	reverse	5'-GGCAGCTCGTACAATTTTCAGT-3'	
<i>OAS1a</i>	forward	5'-GAAGAGGCTGATGTGTGGCT-3'	XR_001784699.1
	reverse	5'-TGTCCAGTTCTTCTACCTGC-3'	
<i>OAS1b</i>	forward	5'-TTCTACGCCAATCTCATCAGTG-3'	NR_003507.1
	reverse	5'-GGTCCCCCAGCTTCTCCTTAC-3'	
<i>OAS2</i>	forward	5'-AAACCTCACACCCAACGAAAA-3'	XM_017320884.1
	reverse	5'-CCACCCTTAGCCACTTCCT-3'	
<i>OAS3</i>	forward	5'-CCAACCCAAGTGCCAATAAAA-3'	NM_145226.2
	reverse	5'-AACATGACTTGAGATACTATCCAATGCT-3'	
<i>OASL1</i>	forward	5'-TGGACCTTGGGCTCAGTAAC-3'	XM_006530295.3
	reverse	5'-GCACAACGGTGACAGTGATG-3'	
<i>OASL2</i>	forward	5'-CGATGCCTGGGAGAGAATCG-3'	XM_006530315.3
	reverse	5'-TCGCCTGCTCTTCGAAACTG-3'	

Table S2. The expression of type I IFN related genes in tumor cell lines

(a)

Normalized ratio	RIG-I		TLR3		TLR7	
	Pre-infection	Post-infection	Pre-infection	Post-infection	Pre-infection	Post-infection
B16-1	1.19E-03	0.06	9.24E-03	0.28	1.16E-03	9.71E-04
B16-2	1.39E-03	0.04	8.16E-03	0.19	8.84E-04	1.11E-03
B16-3	1.52E-03	0.05	0.01	0.16	7.35E-04	4.14E-03
WEHI164-1	5.48E-03	0.11	0.01	0.27	5.63E-03	0.01
WEHI164-2	6.69E-03	0.11	0.01	0.3	7.03E-03	9.80E-03
WEHI164-3	9.25E-03	0.14	0.02	0.62	0.03	0.05
3LL-1	8.64E-03	0.04	2.44E-03	0.01	6.25E-03	0.02
3LL-2	7.40E-03	0.03	4.20E-03	0.01	5.24E-03	0.01
3LL-3	7.91E-03	0.01	2.24E-03	4.61E-03	3.89E-03	8.29E-03
SCCVII-1	0.03	0.07	0.02	0.05	0.05	6.38E-03
SCCVII-2	0.03	0.07	0.02	0.04	0.05	0.01
SCCVII-3	0.02	0.08	3.90E-03	0.07	5.78E-03	0.1
MBT-1	5.79E-03	0.04	0.02	0.08	4.08E-03	0.02
MBT-2	8.77E-03	0.04	0.03	0.08	8.49E-03	0.05
MBT-3	6.63E-03	0.06	0.03	0.09	3.04E-03	0.08
BALB-1	0.05	0.17	0.14	0.74	0.02	6.36E-03
BALB-2	0.04	0.12	0.1	1.07	0.05	2.78E-03
BALB-3	0.04	0.15	0.08	1.31	7.22E-03	0.02
calibrator	1	1	1	1	1	1

(b)

Normalized ratio	IFN- β		IFN- α		IRF-3	
	Pre-infection	Post-infection	Pre-infection	Post-infection	Pre-infection	Post-infection
B16-1	0.02	0.5	0.04	0.19	0.02	0.03
B16-2	0.04	0.95	0.24	0.38	8.56E-03	0.02
B16-3	0.04	3.03	0.2	1.78	0.02	0.04
WEHI164-1	0.05	12.95	0.15	2.84	0.03	0.07
WEHI164-2	0.13	13.22	0.28	1.76	0.04	0.1
WEHI164-3	7.44E-03	1.87	0.05		0.05	0.05
3LL-1	0.12	2.15	0.25	1.67	0.03	0.05
3LL-2	0.04	0.81	0.14	0.64	0.03	0.04
3LL-3	0.13	0.13	0.33	0.07	0.04	0.03
SCCVII-1	0.02	1.03	0.04	0.1	0.08	0.09
SCCVII-2	8.70E-03	0.88	0.02	0.07	0.11	0.09
SCCVII-3	0.12	0.86	0.15	0.05	0.08	0.13
MBT-1	0.03	4.66	0.11	1.99	0.02	0.05
MBT-2	0.35	2.29		1.34	0.01	0.05
MBT-3	0.09	19.7	0.18	26.42	0.02	0.04
BALB-1	0.08	8.15	0.18		0.09	0.07
BALB-2	0.16	2.48	0.29	2.58	0.11	0.18
BALB-3	0.85	5.88		1.37	0.06	0.05
calibrator	1	1	1	1	1	1

(c)

Normalized ratio	IRF-7		Mx1		Mx2	
	Pre-infection	Post-infection	Pre-infection	Post-infection	Pre-infection	Post-infection
B16-1	2.52E-04	1.37E-03	2.38E-04	0.08	7.54E-03	5.39
B16-2	3.15E-04	2.77E-03	2.04E-05	0.05		3.18
B16-3	9.48E-04	8.69E-03	1.08E-04	0.16	7.23E-03	2.95
WEHI164-1	9.09E-04	0.04	1.40E-05	0.04	8.19E-03	4.74
WEHI164-2	1.80E-03	0.04	1.01E-04	0.03		4.58
WEHI164-3	2.91E-04	0.02	3.84E-05	0.02	8.90E-03	6.83
3LL-1	9.71E-04	0.01	0	1.06E-04	4.05E-03	
3LL-2	7.68E-04	4.55E-03	2.68E-05	1.34E-04	2.19E-03	0.06
3LL-3	1.60E-03	1.22E-03	2.20E-05	3.45E-05		0.13
SCCVII-1	9.13E-04	9.52E-03	5.75E-04	9.22E-03	3.72E-03	3.88
SCCVII-2	9.34E-04	6.95E-03	2.28E-04	3.06E-03	4.65E-03	2.85
SCCVII-3	3.68E-03	0.01	4.75E-04	6.51E-03	1.05E-03	4.19
MBT-1	8.79E-04	0.05	1.17E-04	4.12E-03	0.01	1.46
MBT-2	6.87E-03	0.02	6.32E-05	2.61E-03	0.01	1.38
MBT-3	1.48E-03		0	2.43E-03		0.01
BALB-1	3.90E-03	0.1	3.12E-05	0.11	0.23	24.46
BALB-2	4.29E-03	0.07	1.25E-03	0.35	0.17	16.75
BALB-3	0.01	0.05	2.47E-04		0.12	22.56
calibrator	1	1	1	1	1	1

(d)

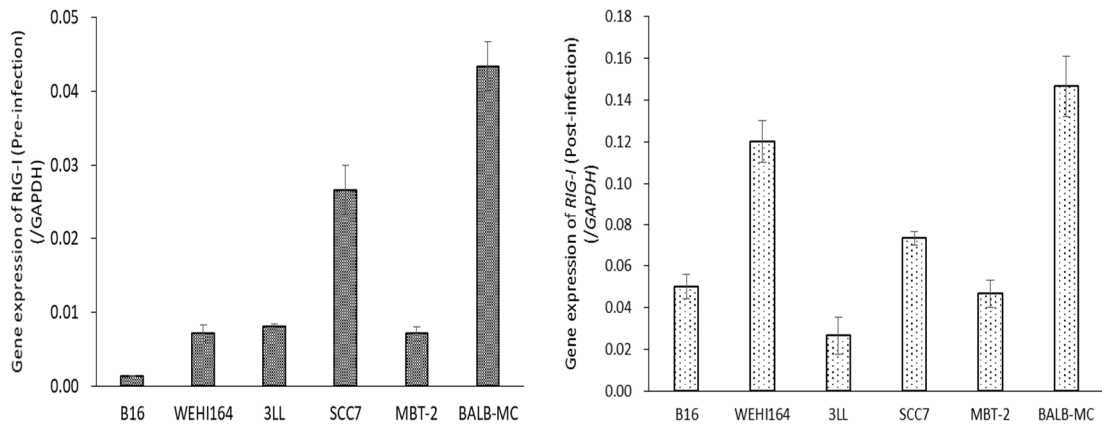
Normalized ratio	OAS1a		OAS1b		OAS2	
	Pre-infection	Post-infection	Pre-infection	Post-infection	Pre-infection	Post-infection
B16-1	0.02	0.88	4.12E-03	3.36	0.17	1.92
B16-2	0.02	0.5	2.86E-03	2	0.09	1.2
B16-3		0.58	9.93E-04	2.18	0.04	1.27
WEHI164-1	0.05	0.55	0.03	5.54	0.25	1.86
WEHI164-2		0.53	0.02	4.44	0.11	1.99
WEHI164-3	0.05	0.9	0.04	6.39	0.35	2.37
3LL-1	9.48E-03	0.06	0.05	0.56	0.32	0.52
3LL-2	0.02	0.05	0.05	0.25	0.43	0.54
3LL-3	6.37E-03	0.07	0.03	0.59	0.17	0.84
SCCVII-1	0.02	0.36	0.06	2.61	0.73	1.77
SCCVII-2	0.03	0.27	0.11	1.79	0.92	1.44
SCCVII-3	0.02	0.49	0.05	2.45	0.46	1.29
MBT-1	0.01	0.17	0.18	1.96	0.42	0.97
MBT-2	0.01	0.09	0.07	2.2	0.2	1.57
MBT-3	0.11	0.02		0.18	1.37	0.65
BALB-1	2.85	35.71	0.44	12.25	2.24	17.93
BALB-2	2.99	27.07	0.47	8.87	2.12	15.76
BALB-3	1.16	27.27	0.08	11.16	0.55	18.4
calibrator	1	1	1	1	1	1

(e)

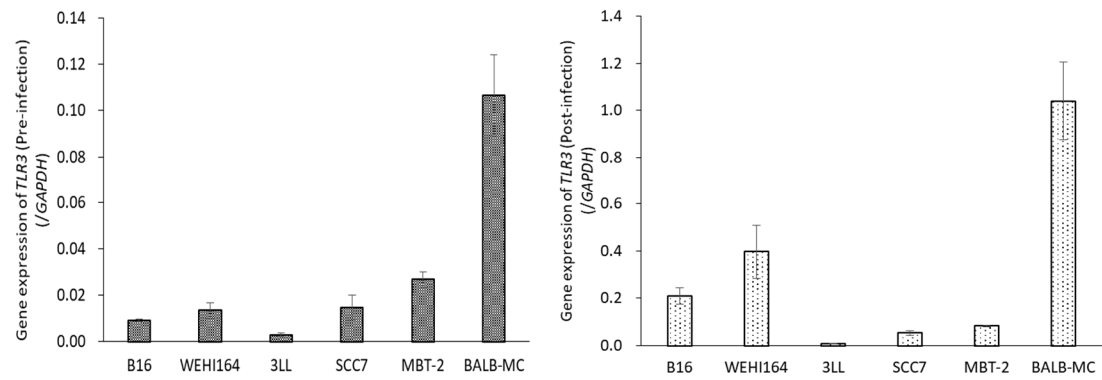
Normalized ratio	OAS3		OASL1		OASL2	
	Pre-infection	Post-infection	Pre-infection	Post-infection	Pre-infection	Post-infection
B16-1	0.43	1.2	0.17	2.95	1.02E-05	6.67E-03
B16-2	0.19	0.8	0.09	2.14	4.41E-06	4.48E-03
B16-3	0.1	0.83	0.06	2.45	8.38E-06	0.01
WEHI164-1	0.69	2.72	0.29	0.91	9.03E-05	0.04
WEHI164-2	0.28	2.67	0.14	1.05	5.81E-05	0.03
WEHI164-3	0.73	3.82	0.33	1.28	8.65E-05	0.02
3LL-1	0.79	1.12	0.84	2.24	2.41E-04	5.15E-03
3LL-2	1.02	0.81	1.15	1.81	3.72E-04	3.70E-03
3LL-3	0.47	1.72	0.57	2.84	2.59E-04	1.71E-03
SCCVII-1	1.86	3.27	1.1	6.93	7.77E-04	0.03
SCCVII-2	2.43	2.6	1.48	5.45	6.73E-04	0.03
SCCVII-3	1.35	2.37	0.69	6.41	8.29E-04	0.03
MBT-1	0.97	1.09	0.65	4.39	1.17E-03	0.05
MBT-2	0.52	1.5	0.34	4.12	1.08E-03	0.03
MBT-3	1.34	1.5	1.62	1.71	1.08E-03	0.01
BALB-1	2.93	4.74	1.71	22.08	1.91E-03	0.06
BALB-2	3.05	3.6	1.45	16.99	1.58E-03	0.2
BALB-3	0.85	5.13	0.62	19.88	1.84E-03	0.02
calibrator	1	1	1	1	1	1

Constitutive and rNDV-induced expression of type I IFN related genes analyzed in different tumor cell lines by qPCR. The gene expression of (a)RIG-I, TLR3,TLR7, (b)IFN- β , IFN- α , IRF-3, (c)IRF-7, Mx1, Mx2, (d)OAS1a, OAS1b, OAS2, (e)OAS3, OASL1, OASL2 were measured as type I IFN related genes. The gene expression was normalized by calibrator.

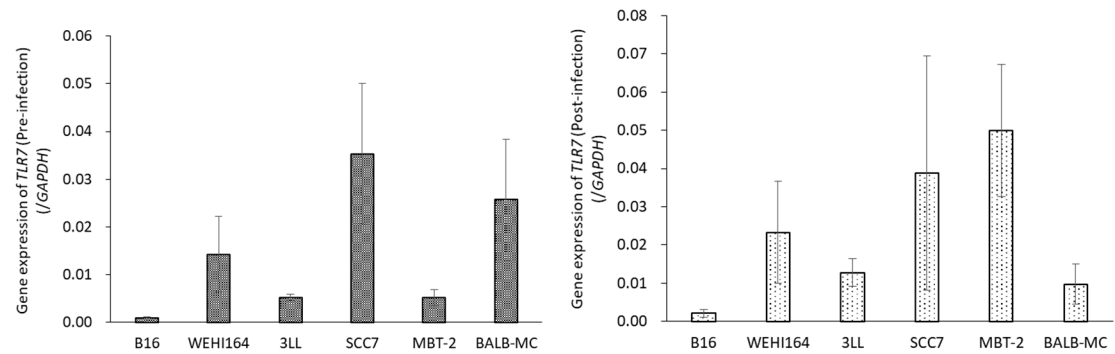
(a)



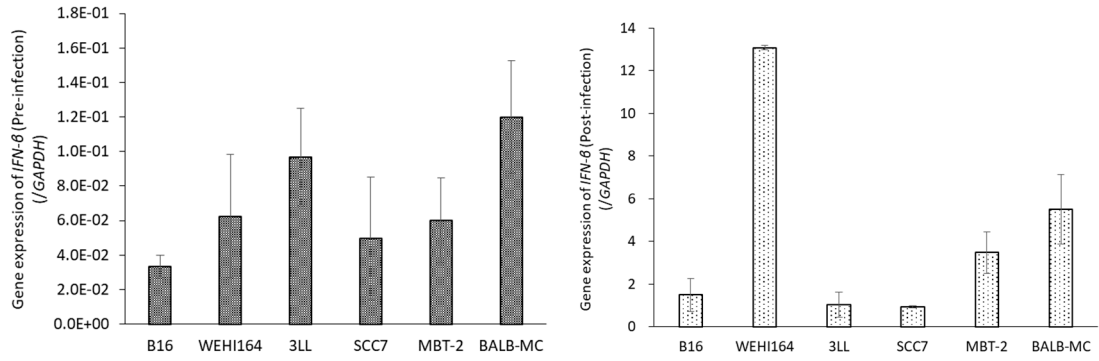
(b)



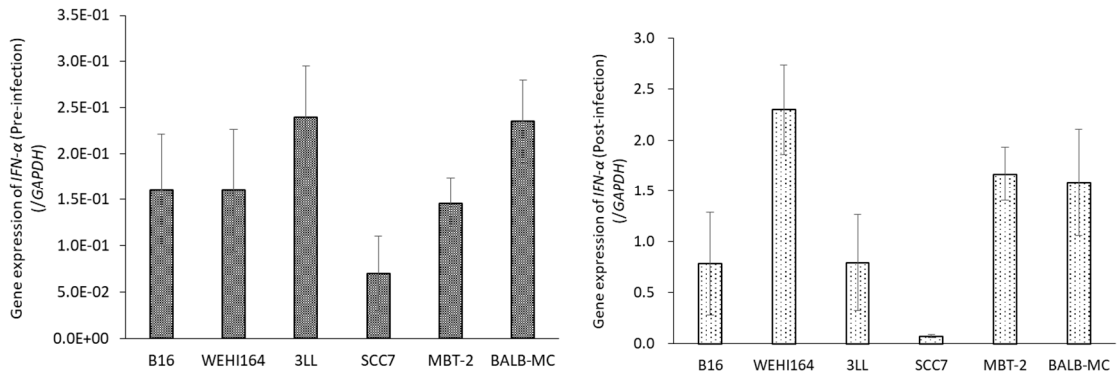
(c)



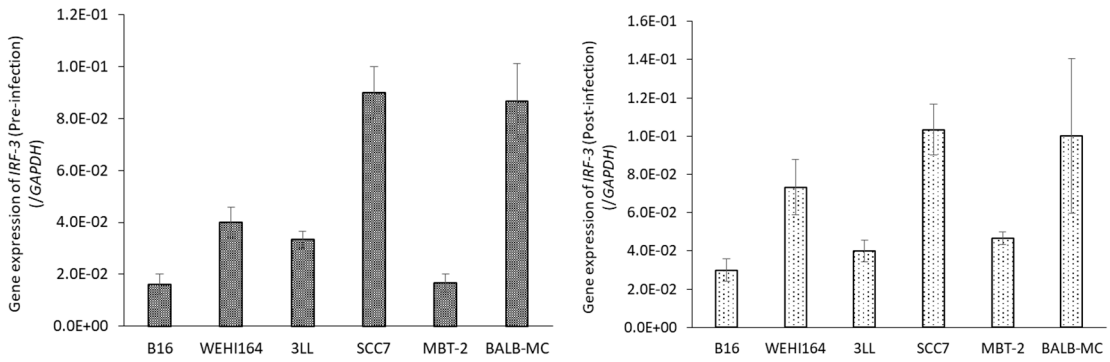
(d)



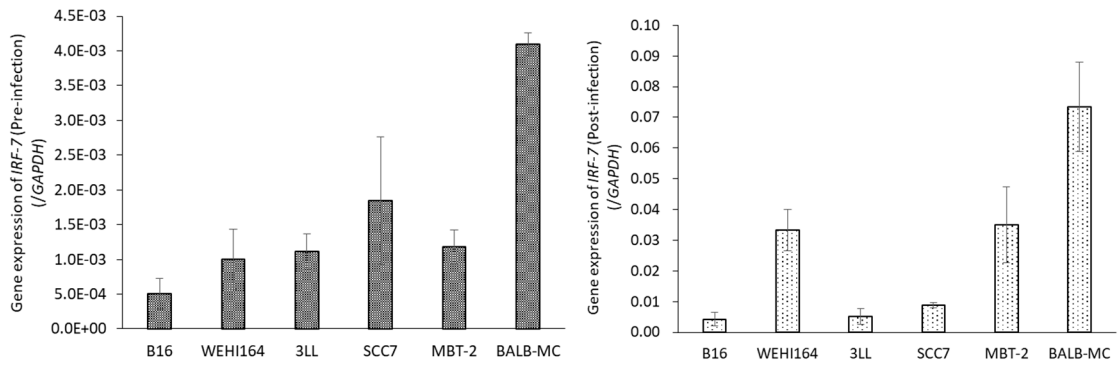
(e)



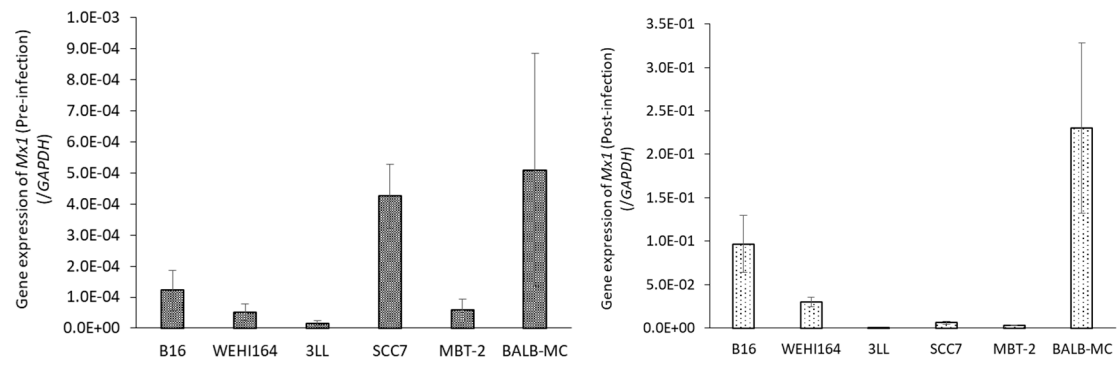
(f)



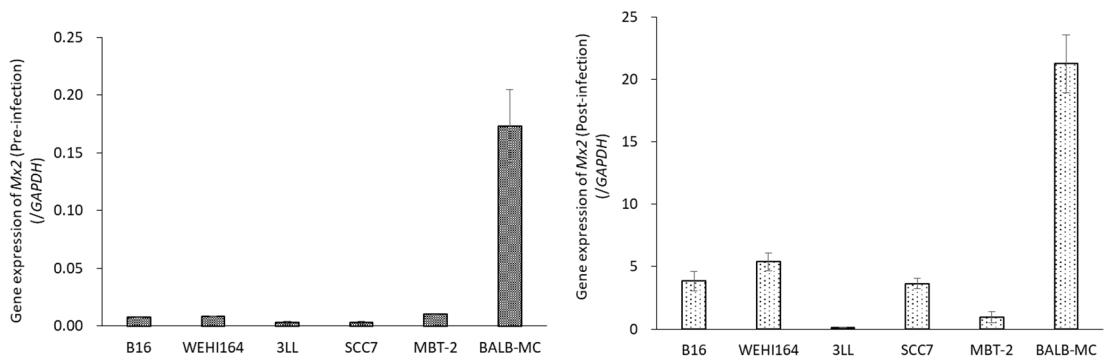
(g)



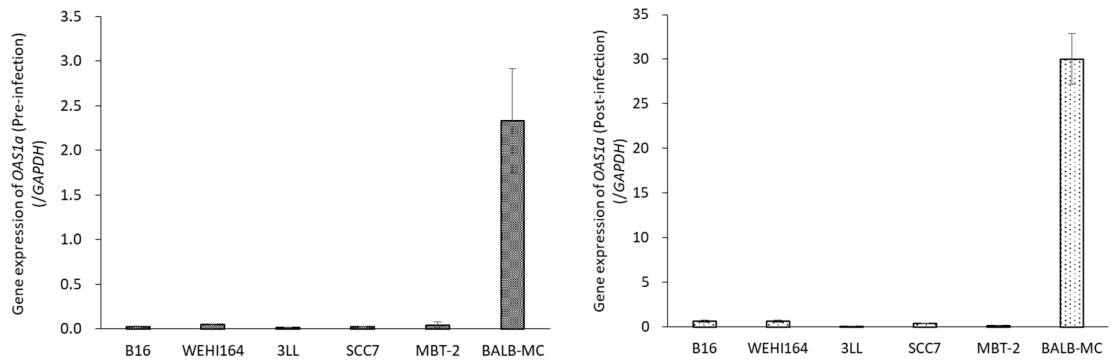
(h)



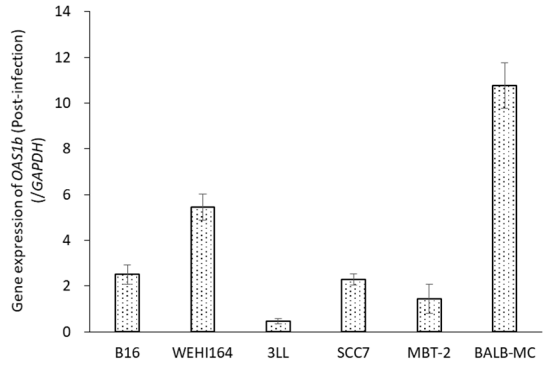
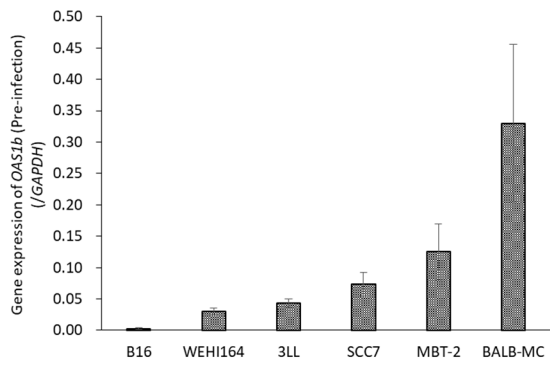
(i)



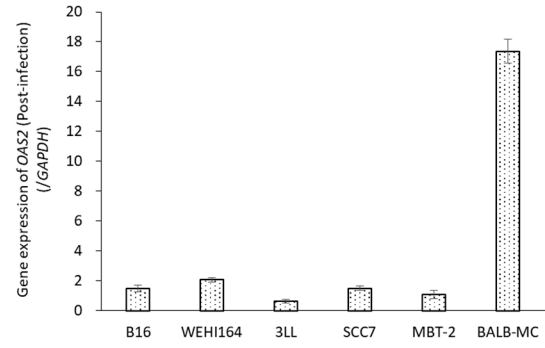
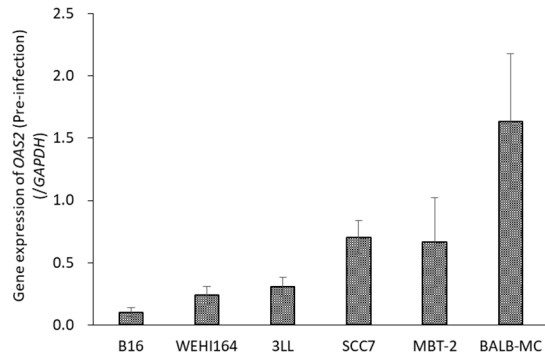
(j)



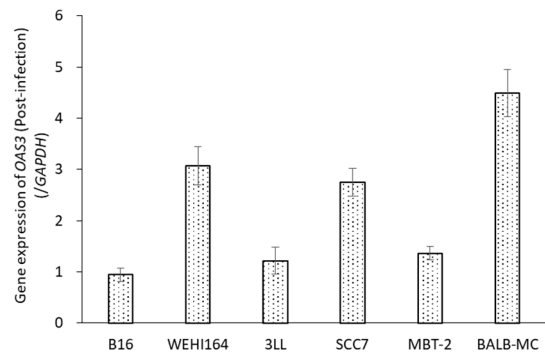
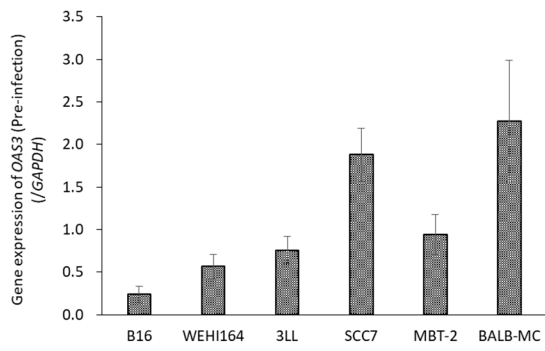
(k)



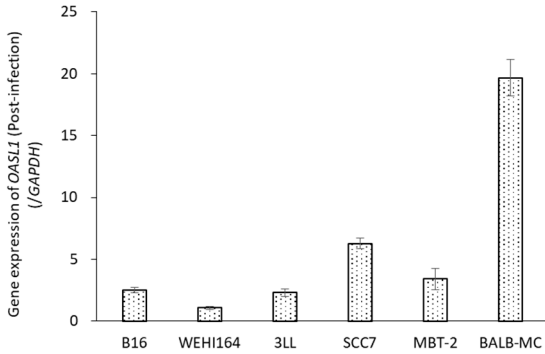
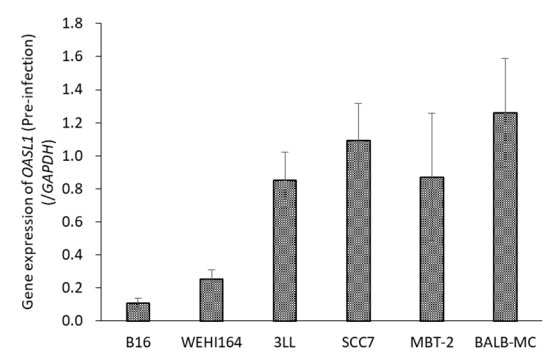
(l)



(m)



(n)



(o)

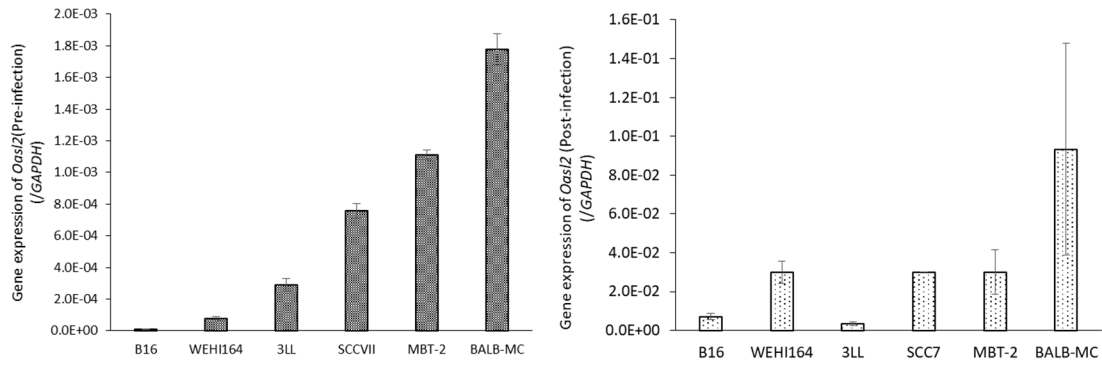


Figure S1. Constitutive and rNDV-induced expression of type I IFN related genes. (a)RIG-I, (b)TLR3, (c)TLR7, (d)IFN- β , (e)IFN- α , (f)IRF-3, (g)IRF-7, (h)Mx1, (i)Mx2, (j)OAS1a, (k)OAS1b, (l)OAS2, (m)OAS3, (n)OASL1 and (o)OASL2 were measured as type I IFN related genes by qPCR (left: pre-infection, right: post-8h infection). Gene expression was normalized with GAPDH.