

Trajectories of Emergent Central Sleep Apnea During CPAP Therapy

Dongquan Liu, PhD; Jeff Armitstead, PhD; Adam Benjafield, PhD; Shiyun Shao, PhD; Atul Malhotra, MD; Peter A. Cistulli, MD, PhD; Jean-Louis Pepin, MD, PhD; and Holger Woehrle, MD

CHEST 2017; 152(4):751-760

Online supplements are not copyedited prior to posting and the author(s) take full responsibility for the accuracy of all data.

© 2017 AMERICAN COLLEGE OF CHEST PHYSICIANS. Reproduction of this article is prohibited without written permission from the American College of Chest Physicians. See online for more details. DOI: 10.1016/j.chest.2017.06.010

e-Table 1. Demographic data and device usage characteristics in different patient subgroups from the post-hoc analysis (patients with residual apnea-hypopnea index $\geq 15/h$). P-values reported in the right-hand column of the table are those for testing the null hypothesis that all groups follow the same distribution; a p-value of <0.05 indicates that there is statistically significant difference across groups. To examine such differences further, pairwise tests between specific groups were conducted, with results shown as superscripts in the table.

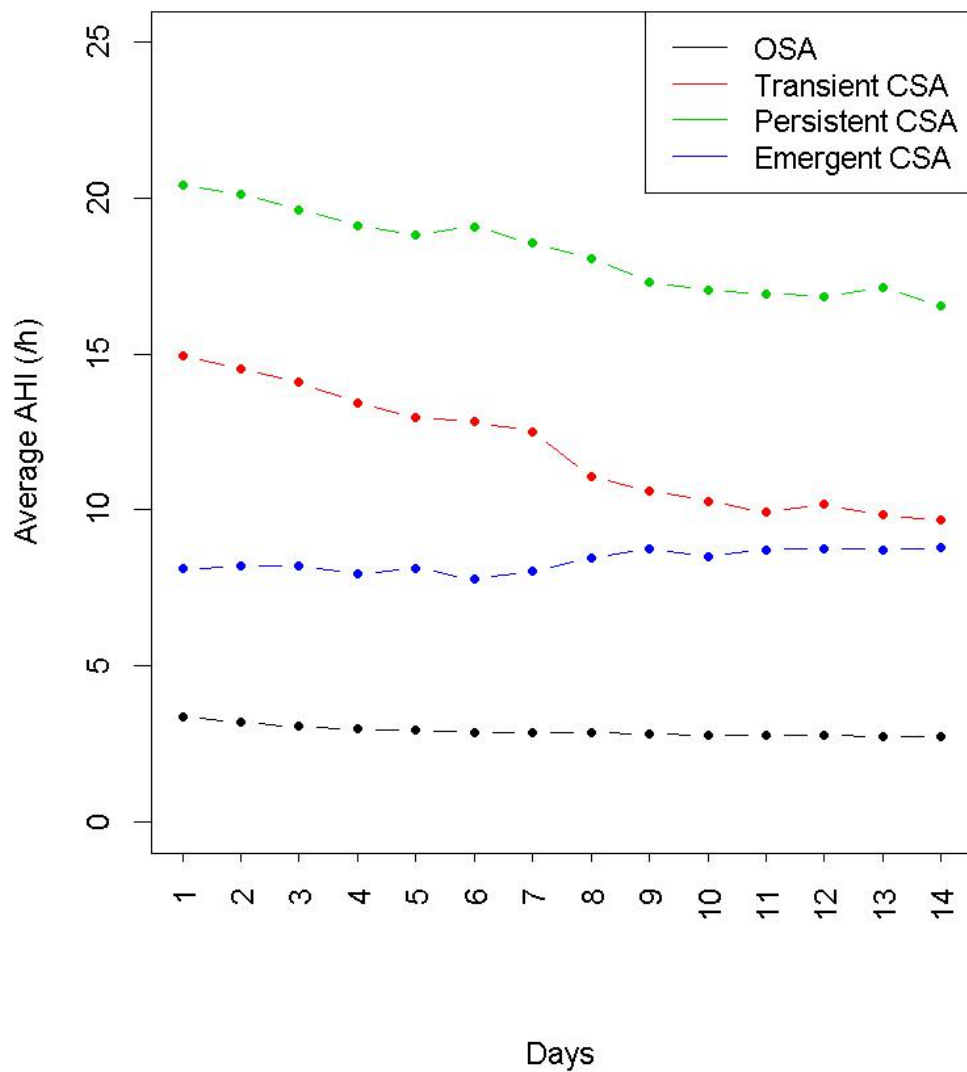
	OSA (n=128,385)	Transient CSA (n=805)	Persistent CSA (n=397)	Emergent CSA (n=336)	P-value
Age, years	56.2 \pm 13.8 ^{a,b,c}	62.1 \pm 13.4 ^{a,d,e}	65.5 \pm 13.1 ^{b,d}	65.0 \pm 12.4 ^{c,e}	<0.001
CPAP mode during first 90 days, n (%)					
Automatic pressure	60,212 (46.9) ^{a,b,c}	405 (50.3) ^a	193 (48.6) ^b	153 (45.5) ^c	
Fixed pressure	61,166 (47.6)	273 (33.9)	142 (35.8)	137 (40.8)	<0.001
Both	7,007 (5.5)	127 (15.8)	62 (15.6)	46 (13.7)	
Respiratory parameters in the first 90 days					
AHI, /h	2.6 \pm 3.1 ^{a,b,c}	12.0 \pm 6.2 ^{a,d,e}	26.0 \pm 10.8 ^{b,d,f}	14.7 \pm 8.3 ^{c,e,f}	<0.001
CAI, /h	0.4 \pm 0.7 ^{a,b,c}	5.1 \pm 3.4 ^{a,d}	14.4 \pm 7.9 ^{b,d,f}	5.5 \pm 3.5 ^{c,f}	<0.001
Average median pressure, cmH ₂ O	9.8 \pm 2.7 ^{a,b}	10.1 \pm 2.6 ^a	10.1 \pm 2.4 ^b	10.1 \pm 2.6	<0.001
Average 95 th percentile pressure, cmH ₂ O	11.0 \pm 2.8 ^{a,b,c}	11.6 \pm 2.6 ^a	11.7 \pm 2.7 ^b	11.4 \pm 2.9 ^c	<0.001
Average median leak, L/min	6.0 \pm 9.4 ^{a,b,c}	7.1 \pm 7.9 ^{a,e}	7.6 \pm 8.4 ^b	8.3 \pm 8.6 ^{c,e}	<0.001
Average 95 th percentile leak, L/min	21.6 \pm 18.3 ^{a,b,c}	24.8 \pm 17.6 ^{a,d,e}	26.9 \pm 17.6 ^{b,d}	27.9 \pm 18.4 ^{c,e}	<0.001

Values are mean \pm standard deviation, or number of patients (%).

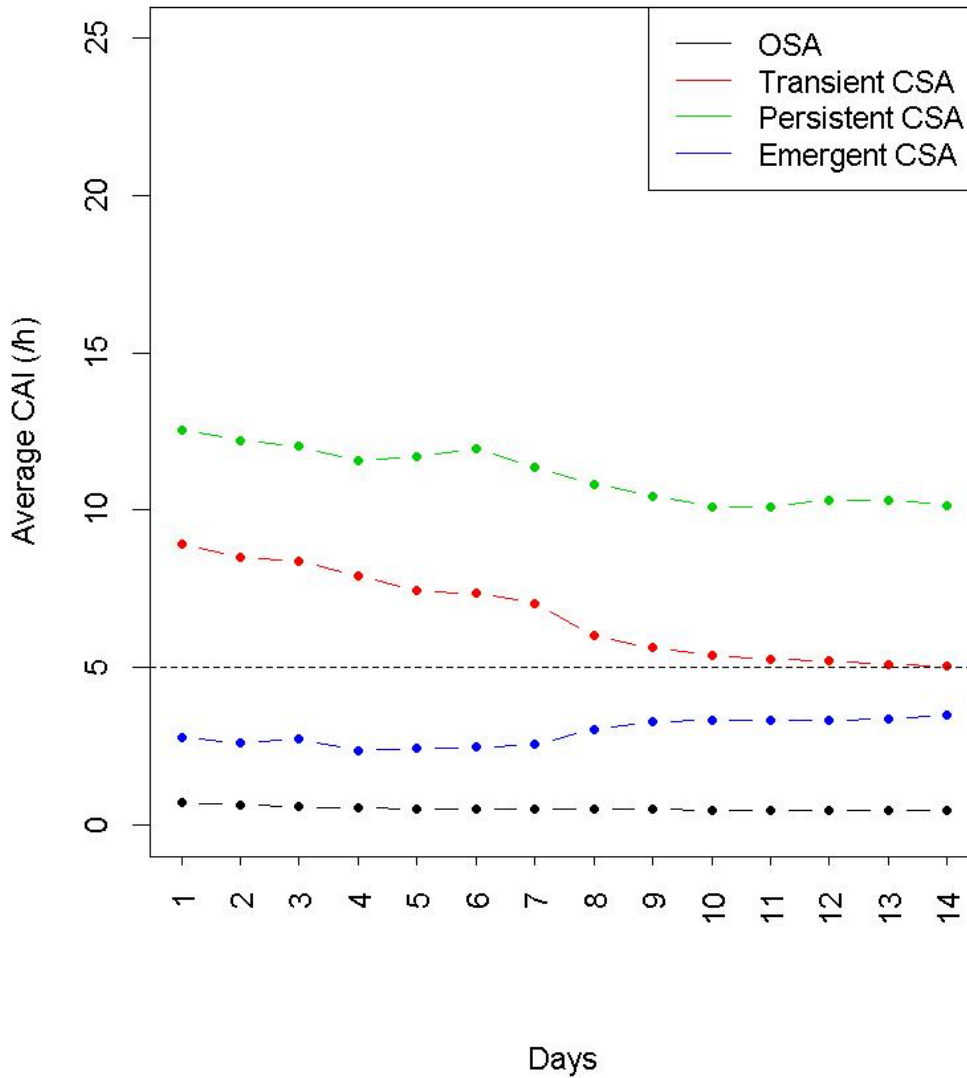
CSA, central sleep apnea; OSA, obstructive sleep apnea.

Pairwise significance: ^ap <0.05 transient CSA vs OSA; ^bp <0.05 persistent CSA vs OSA; ^cp <0.05 emergent CSA vs OSA; ^dp <0.05 persistent CSA vs transient CSA; ^ep <0.05 emergent CSA vs transient CSA; ^fp <0.05 emergent CSA vs persistent CSA.

e-Figure 1A

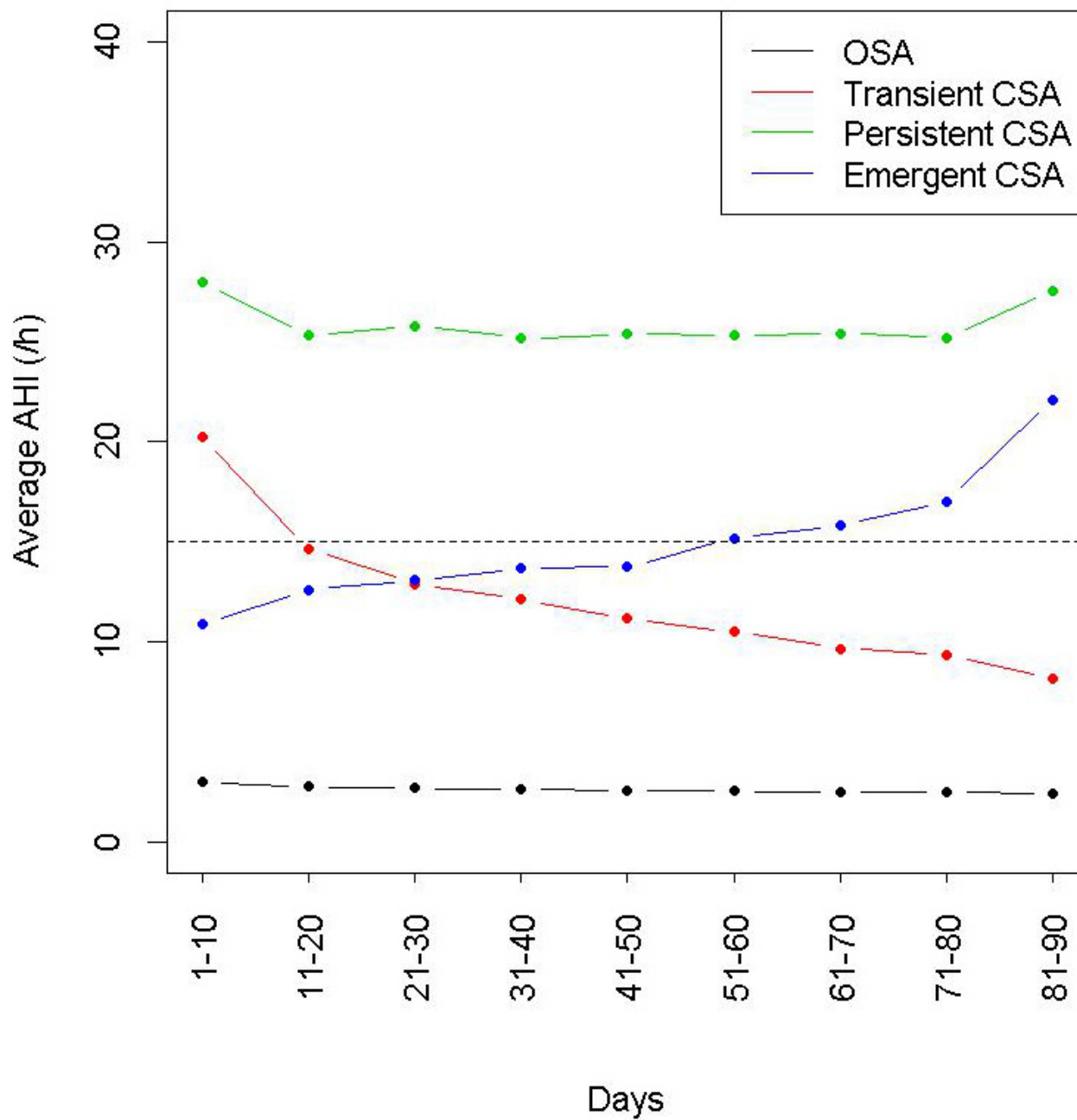


e-Figure 1B

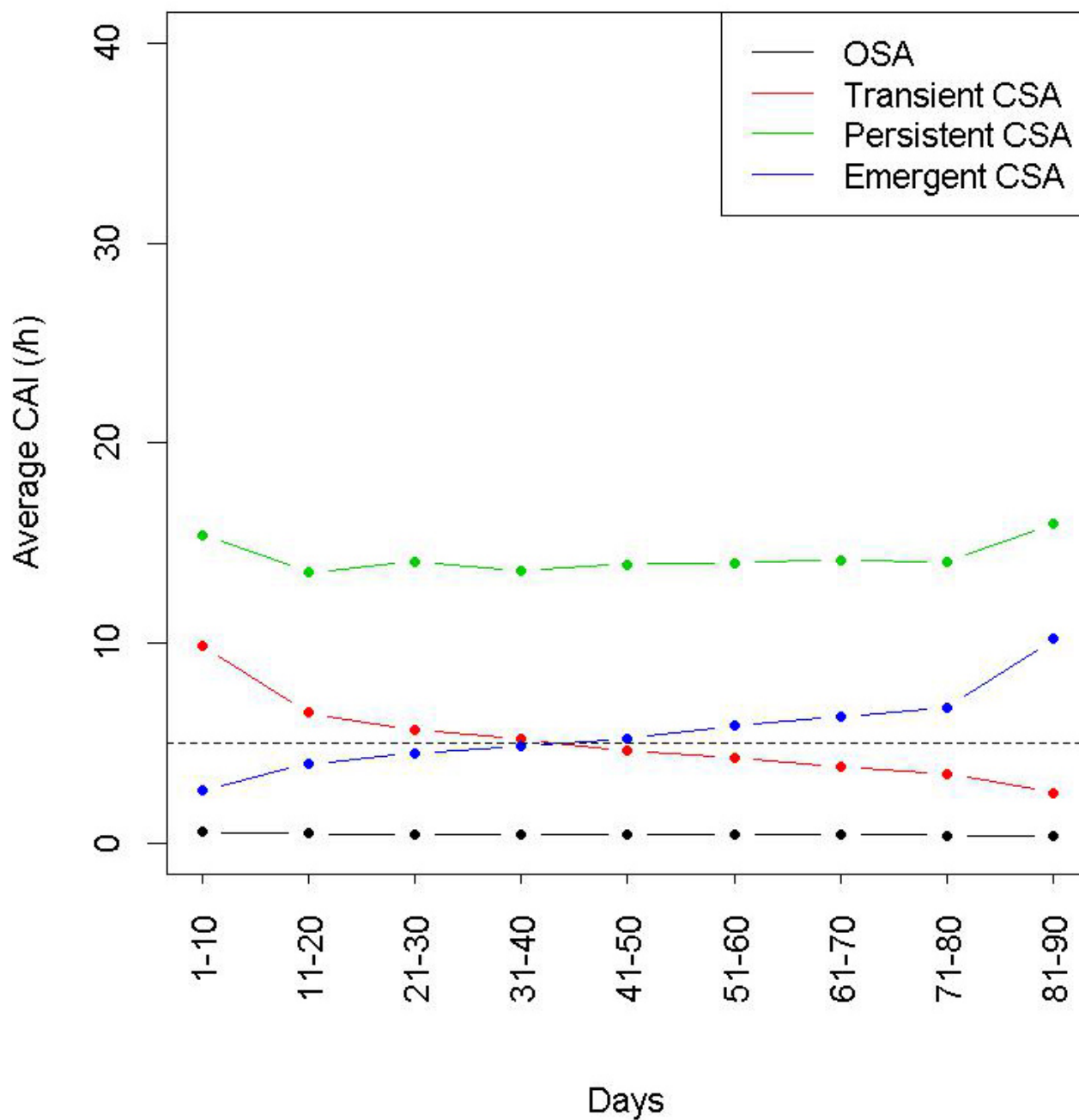


e-Figure 1. Residual apnea hypopnea index (AHI) **(A)** and central apnea index (CAI) **(B)** over the first 2 weeks of therapy in patient subgroups during continuous positive airway pressure therapy. CSA, central sleep apnea; OSA, obstructive sleep apnea.

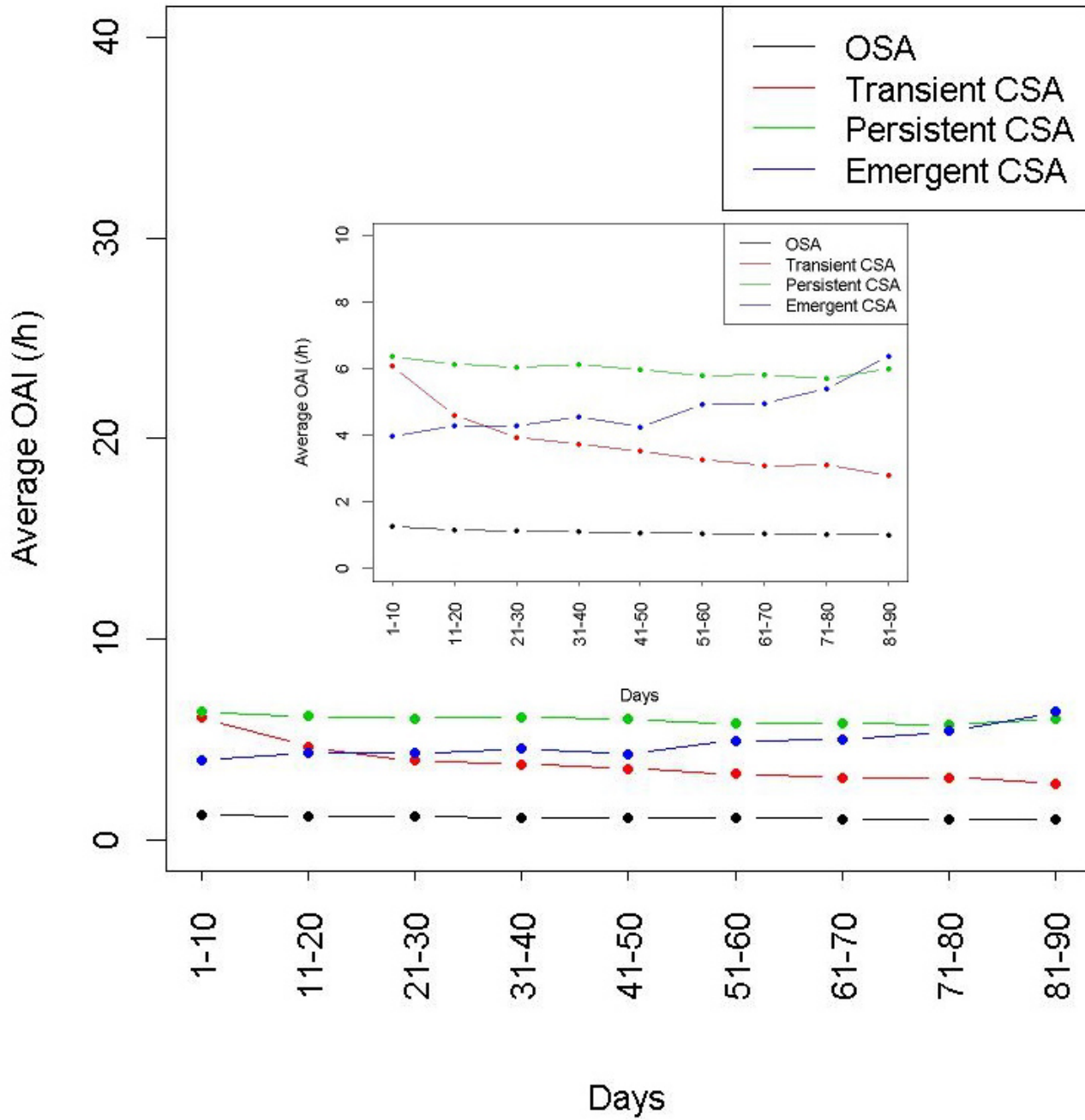
e-Figure 2A



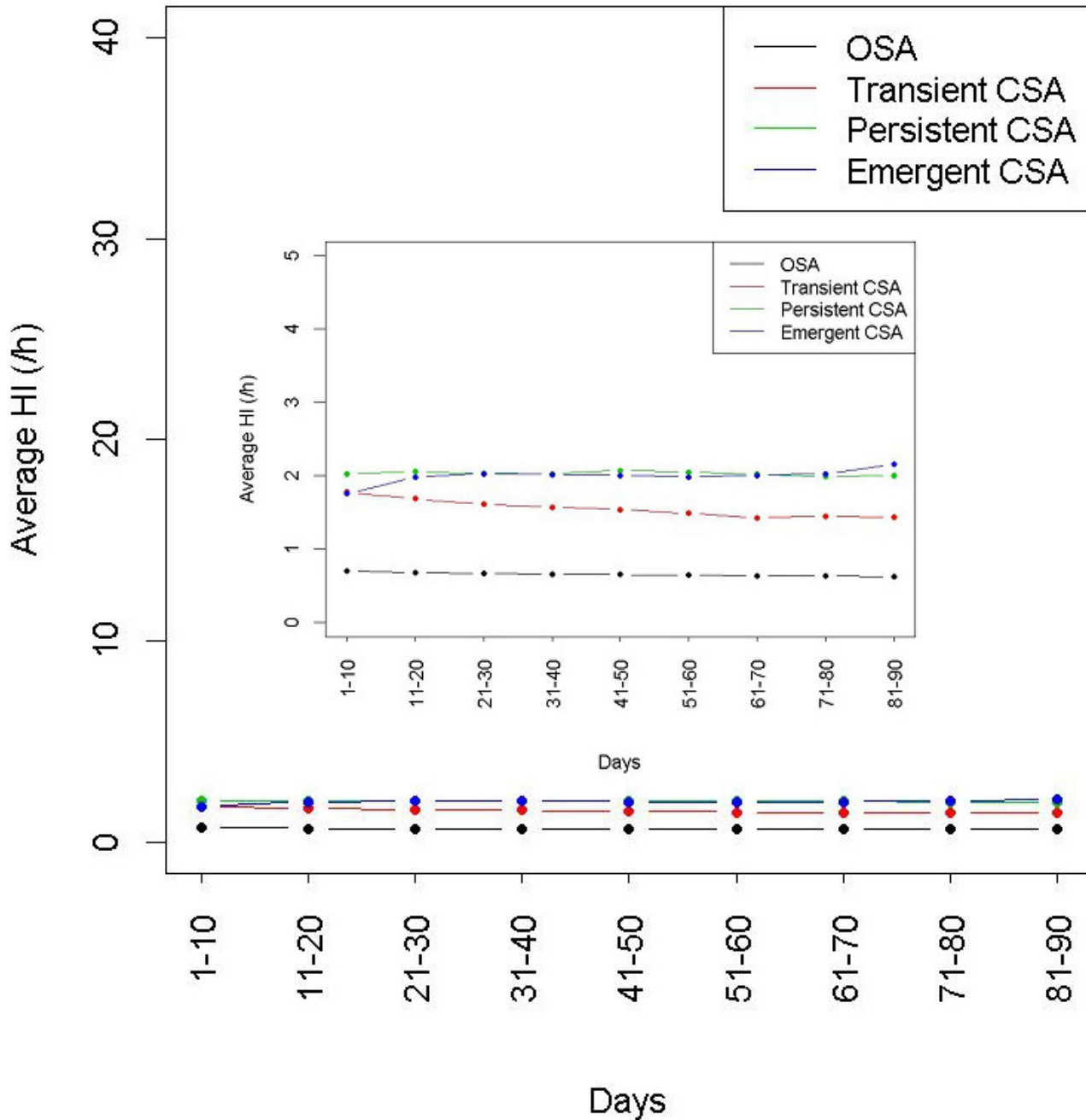
e-Figure 2B



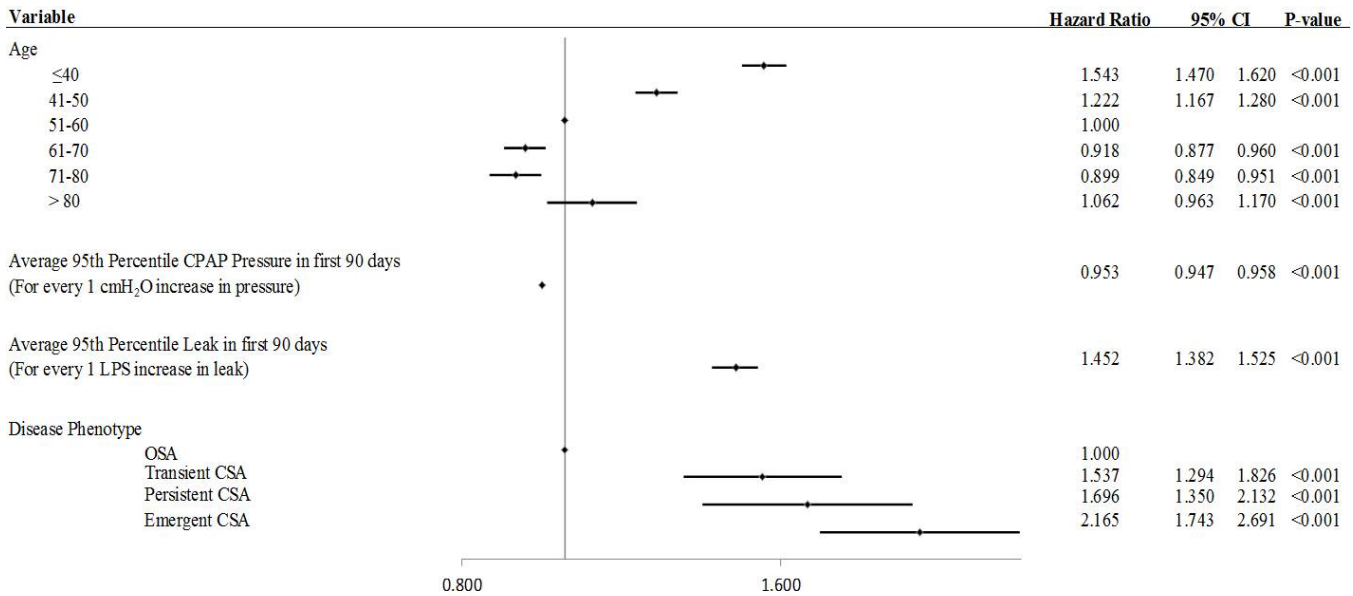
e-Figure 2C



e-Figure 2D



e-Figure 2. Residual apnea hypopnea index (AHI) (A), central apnea index (CAI) (B), obstructive apnea index (OAI) (C) and hypopnea index (HI) (D) over time in patient subgroups during continuous positive airway pressure therapy from the post-hoc analysis (patients with residual apnea-hypopnea index $\geq 15/h$). CSA, central sleep apnea; OSA, obstructive sleep apnea.



e-Figure 3. Forest plot showing risk of therapy termination in different patient subgroups from the post-hoc analysis (patients with residual apnea-hypopnea index $\geq 15/h$). CI, confidence interval; CPAP, continuous positive airway pressure; CSA, central sleep apnea; OSA, obstructive sleep apnea (no CSA); LPS, liters per second.