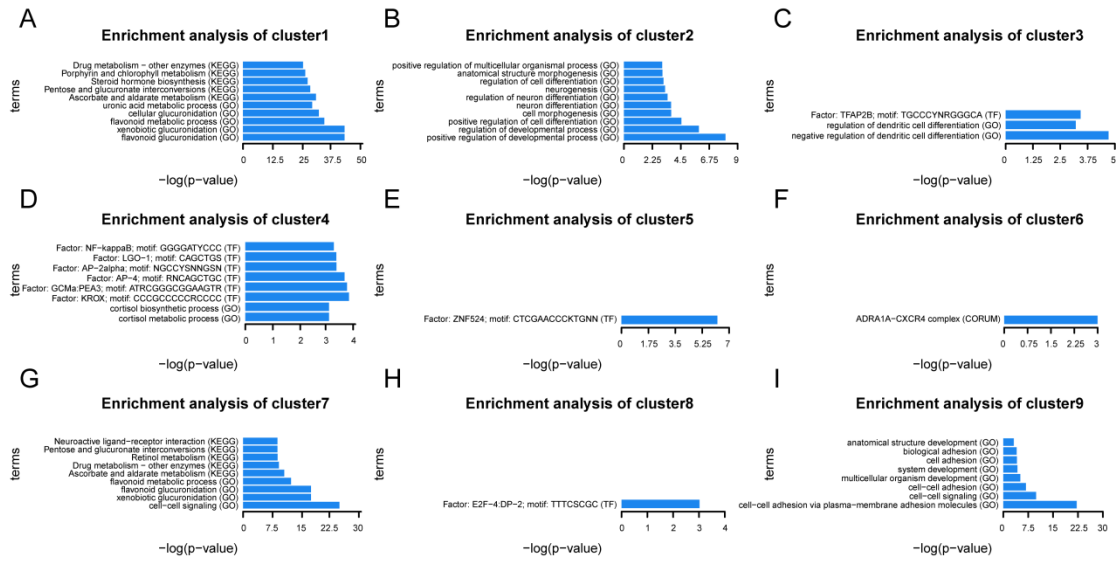
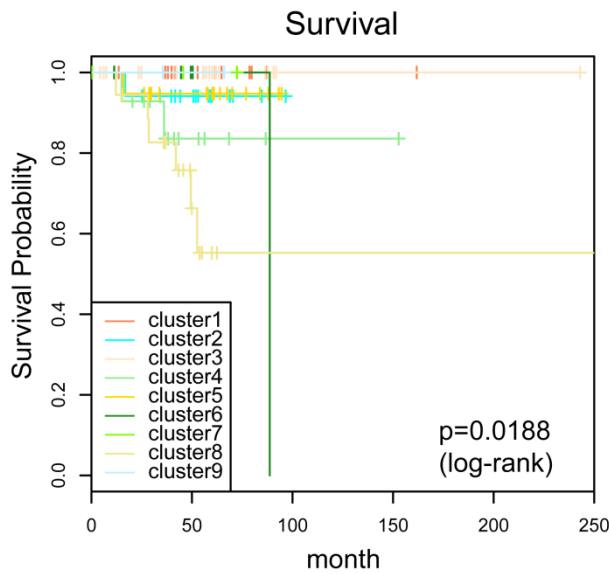


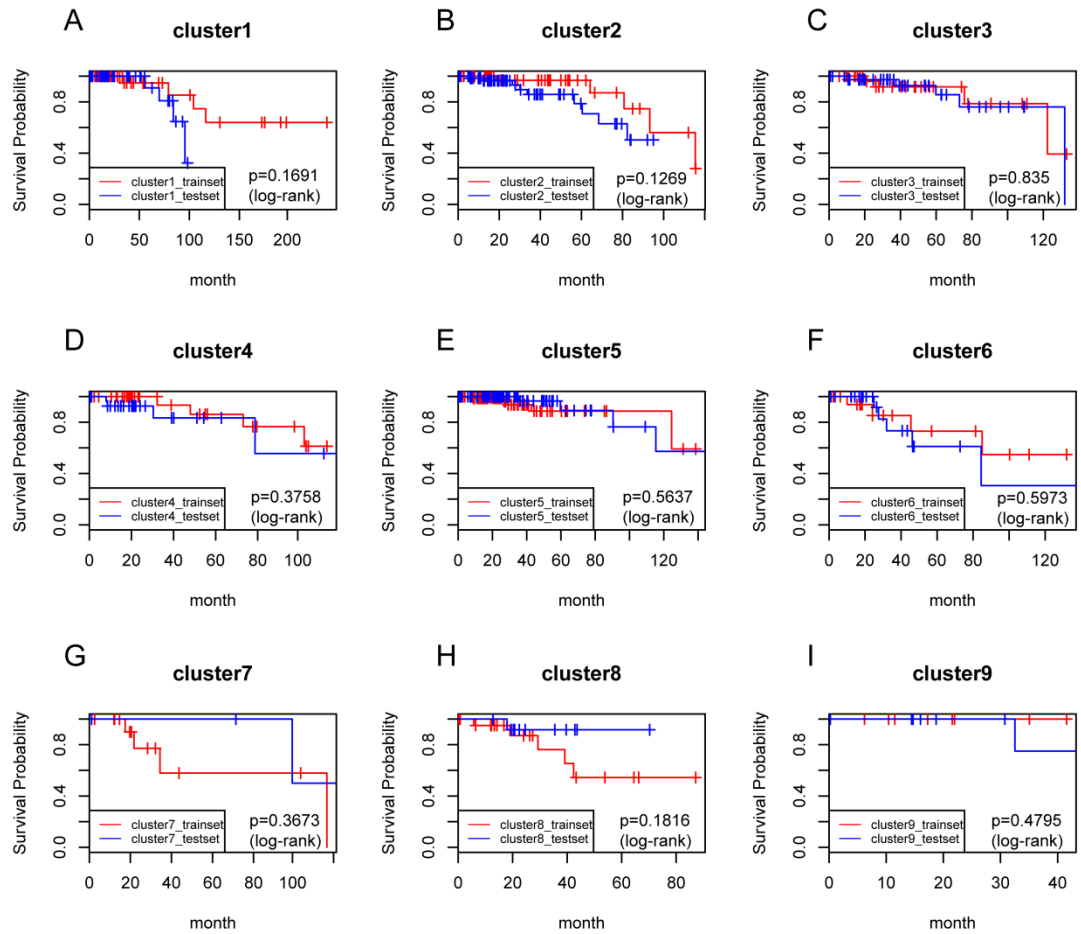
**Supplementary Figure S1. The survival curves of DNA methylation subgroups in three PAM50 subtypes.** A. The survival curve of two Basal-like subgroups in train set. B. The survival curve of three Luminal A subgroups in train set. C. The survival curve of two Luminal B subgroups in train set. D. The survival curve of two Basal-like subgroups in test set. E. The survival curve of three Luminal A subgroups in test set. F. The survival curve of two Luminal B subgroups in test set. G. The survival curve of two Basal-like subgroups in external validation dataset. H. The survival curve of three Luminal A subgroups in external validation dataset. I. The survival curve of two Luminal B subgroups in external validation dataset. The log-rank test was used to assess the statistical significance of the difference.



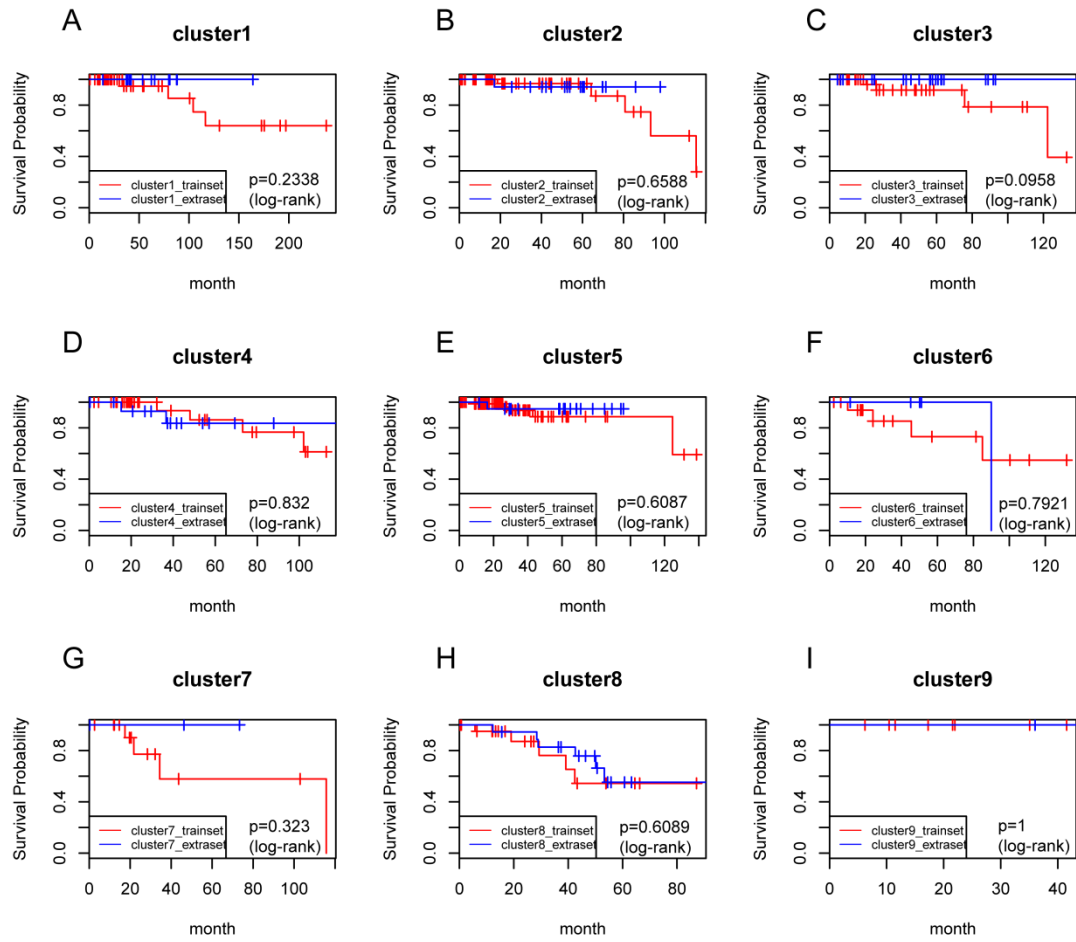
**Supplementary Figure S2.** The enrichment analyses of genes corresponding to the specific CpG sites in each DNA methylation cluster.



**Supplementary Figure S3.** The survival curve of nine predicted subgroups in the external validation dataset. The log-rank test was used to assess the statistical significance of the difference.



**Supplementary Figure S4. The survival curves of the same labeled clusters in train set and test set. The log-rank test was used to assess the statistical significance of the difference.**



**Supplementary Figure S5. The survival curves of the same labeled clusters in train set and external validation dataset. The log-rank test was used to assess the statistical significance of the difference.**