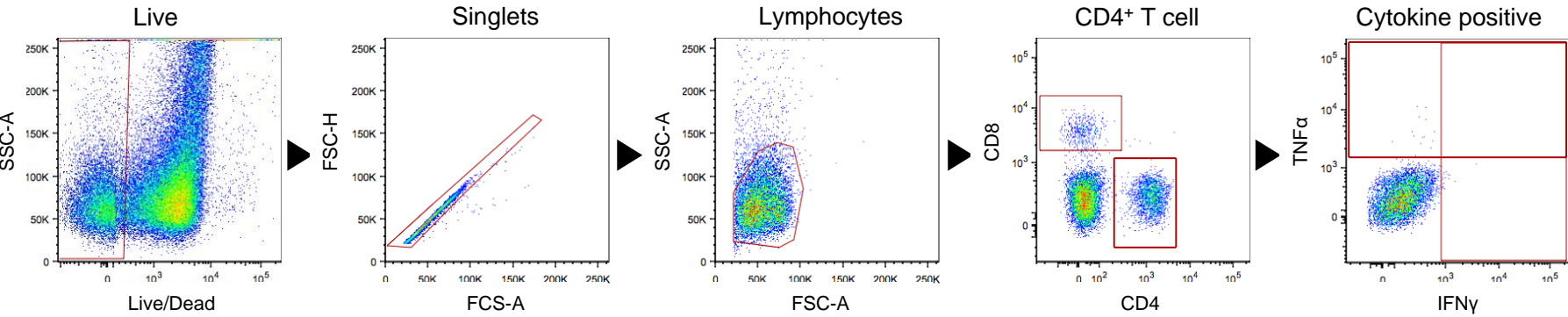
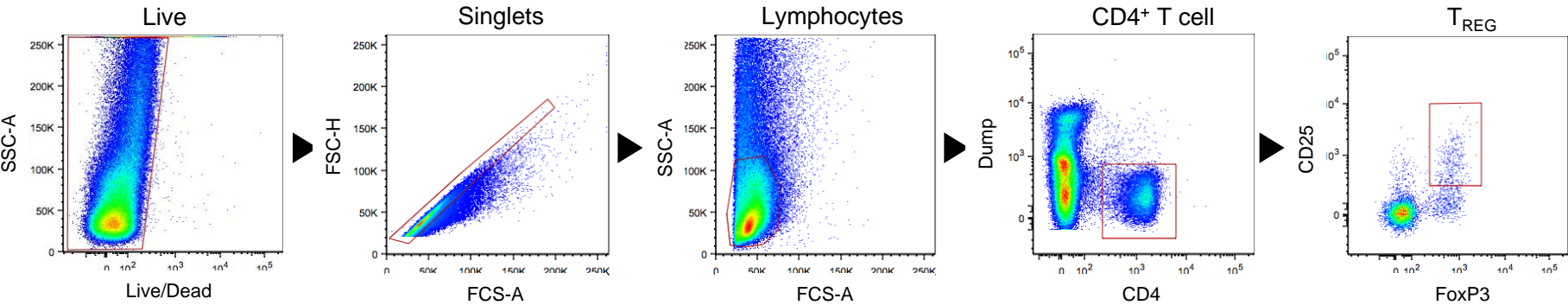


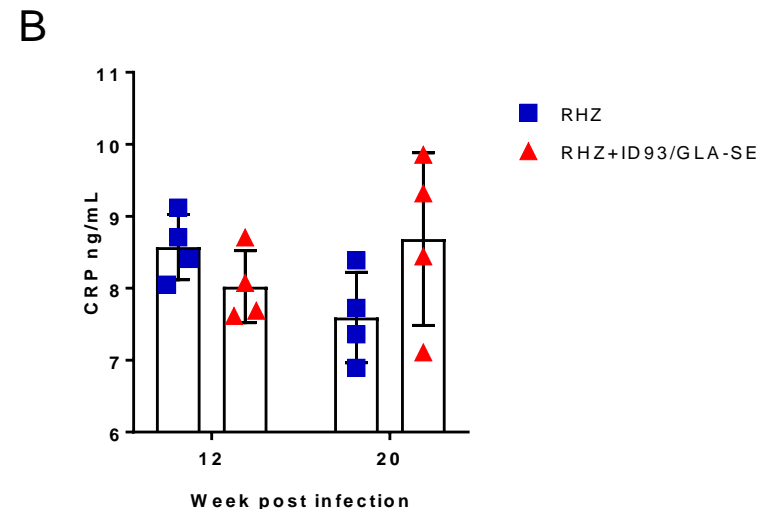
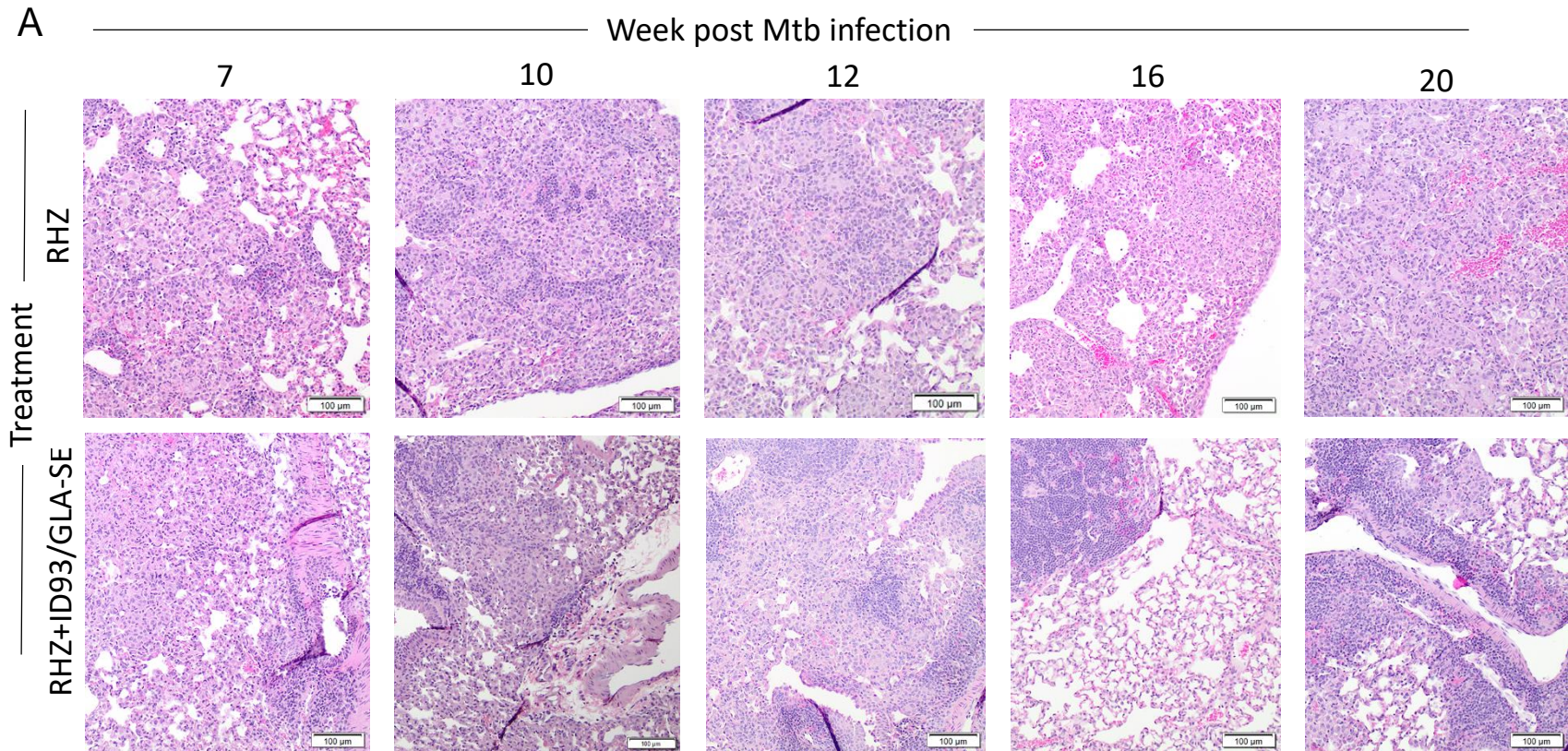
Cytokine stimulation



TREGS



Supplementary Figure 1: Gating strategy for intracellular cytokine staining and regulatory T cell evaluation.



Supplementary Figure 2: Representative histology slides from each treatment group: A) RHZ alone (top) or RHZ+ID93/GLA-SE (bottom) over time. Data are representative of two independent experiments. B) C-reactive protein (CRP) levels detected in the plasma of RHZ or RHZ+ID93/GLA-SE treated mice at 12 or 20 weeks post infection. Data were evaluated using a 2-way ANOVA and Sidaks correction for multiple comparison, and considered not significant based on $p < 0.05$. Four mice/group/timepoint were included and were representative of two independent experiments.