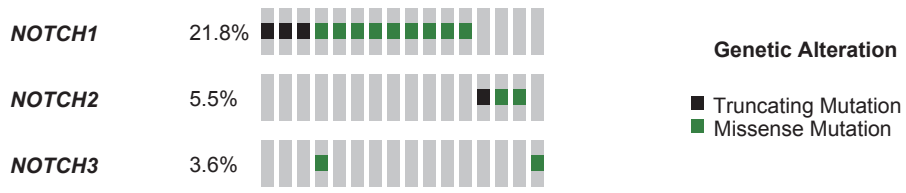
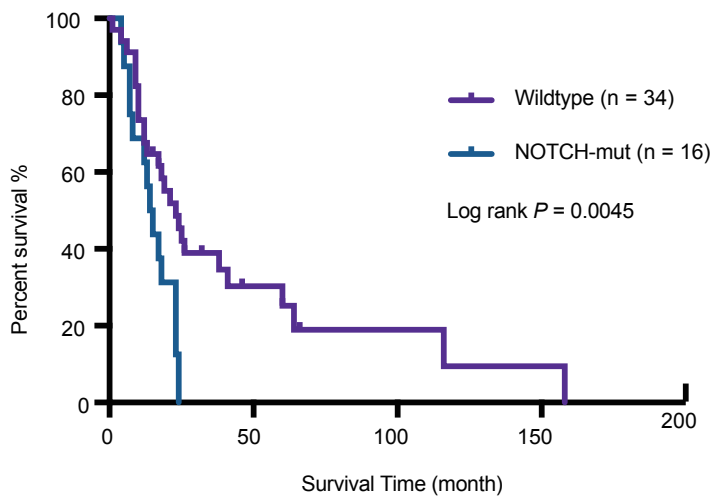


# Figure S10

a



b



**Supplementary information, Figure S10** Mutational status of NOTCH family genes in 55 patients with SCCE. **a** An oncoprint view of NOTCH family gene mutation status in SCCE samples. Truncating mutation includes mutations or indels annotated to stopgain, frame shift and splicing. **B** Survival analysis of 55 SCCEs with or without NOTCH somatic mutations. Cases without survival information were not included in the analysis.