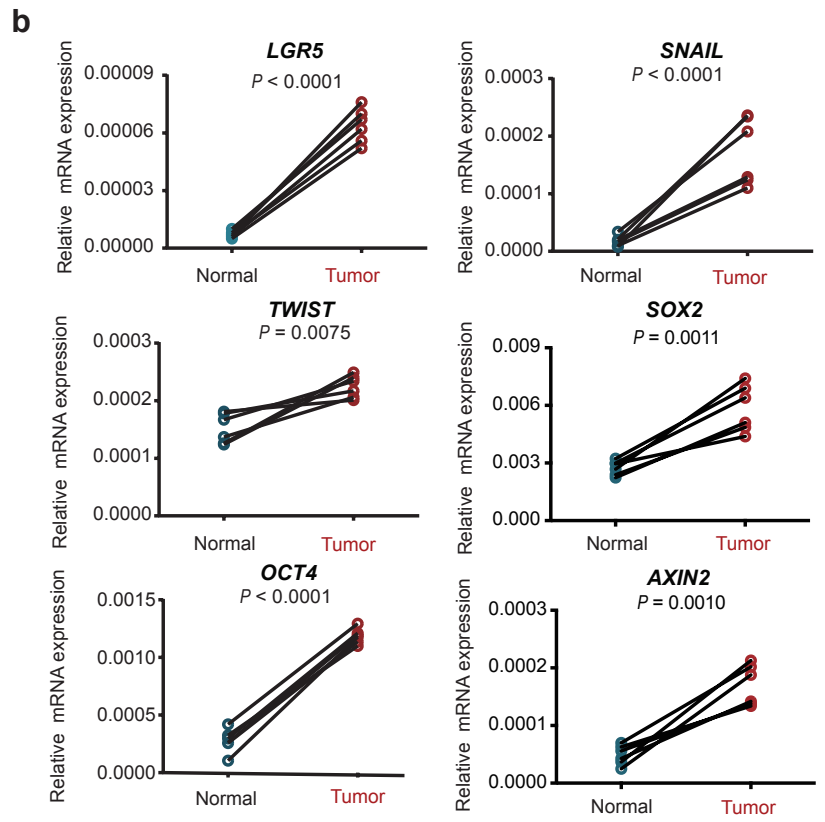
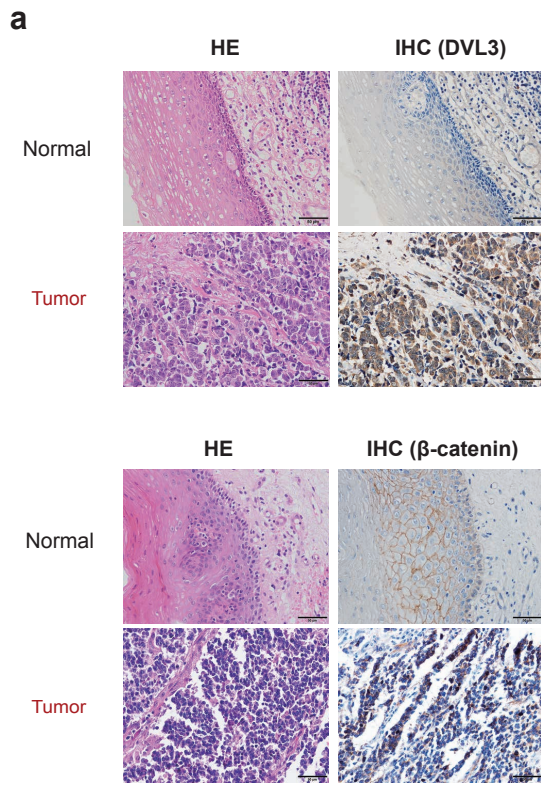


Figure S11



**Supplementary information, Figure S11** Activation of the Wnt/ $\beta$ -catenin signaling pathway in small cell carcinoma of the esophagus. **a** Immunohistochemical staining shows that DVL3 and  $\beta$ -catenin are upregulated in SCCE tumor tissue at protein level. **b** qRT-PCR measured mRNA abundance of downstream target genes of Wnt/ $\beta$ -catenin pathway in paired SCCE samples, including *LGR5*, *SNAIL*, *TWIST*, *SOX2*, *OCT4* and *AXIN2*. Paired two-sided *t*-test;  $n = 8$ . Values represent the mean  $\pm$  standard deviation (SD); \* $P < 0.05$ , \*\* $P < 0.01$ .