

A serine protease KLK8 emerges as regulator of regulators in memory: Microtubule protein dependent neuronal morphology and PKA-CREB signaling

Arpita Konar, Ashish Kumar, Bryan Maloney, Debomoy K. Lahiri, and Mahendra K. Thakur

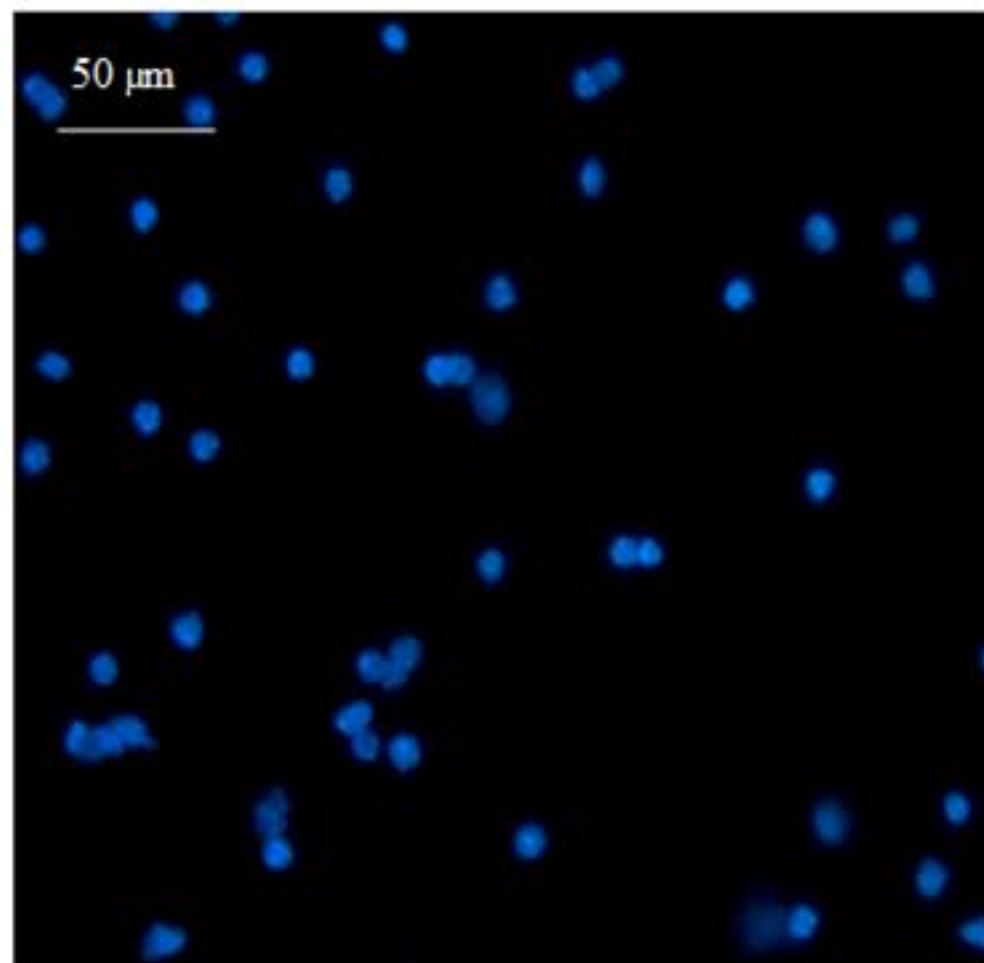
Supplementary Material

S1. DAPI staining assessment of nuclear morphology and light microscopy of cultures.

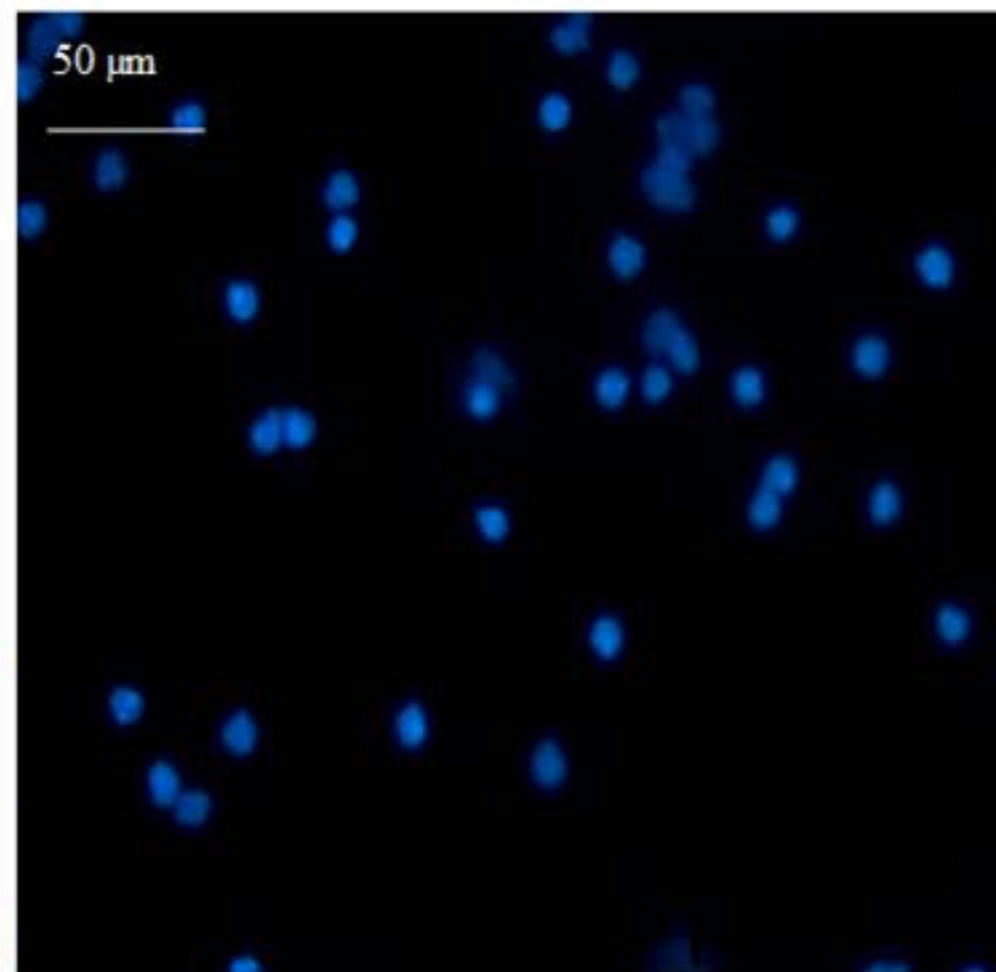
S2-S4. Full-length images of blots presented in main paper.

S1

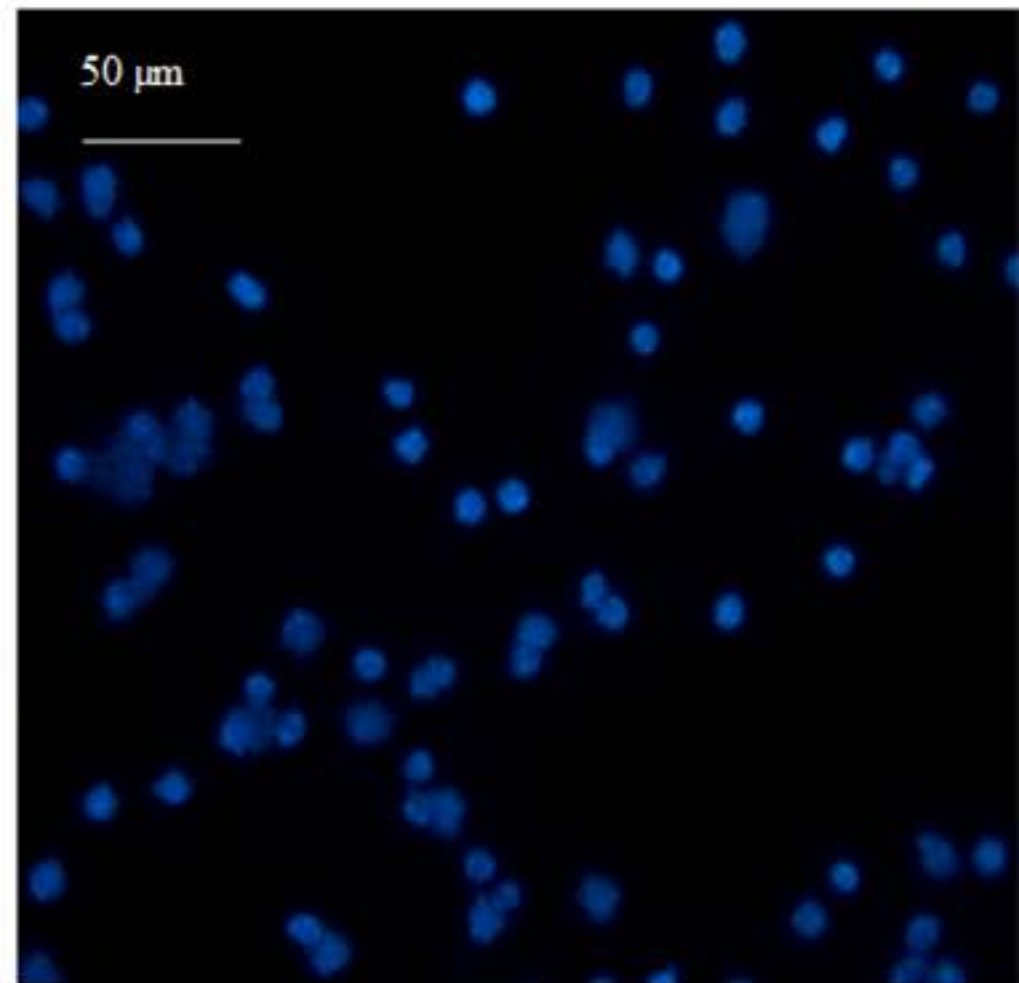
Control



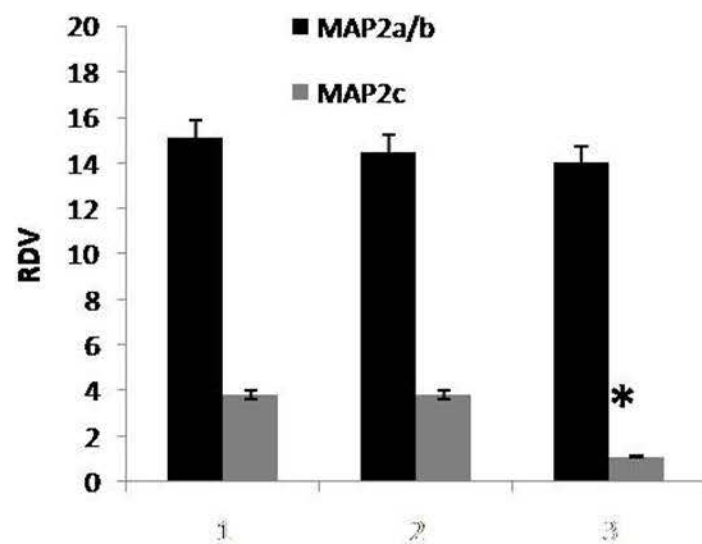
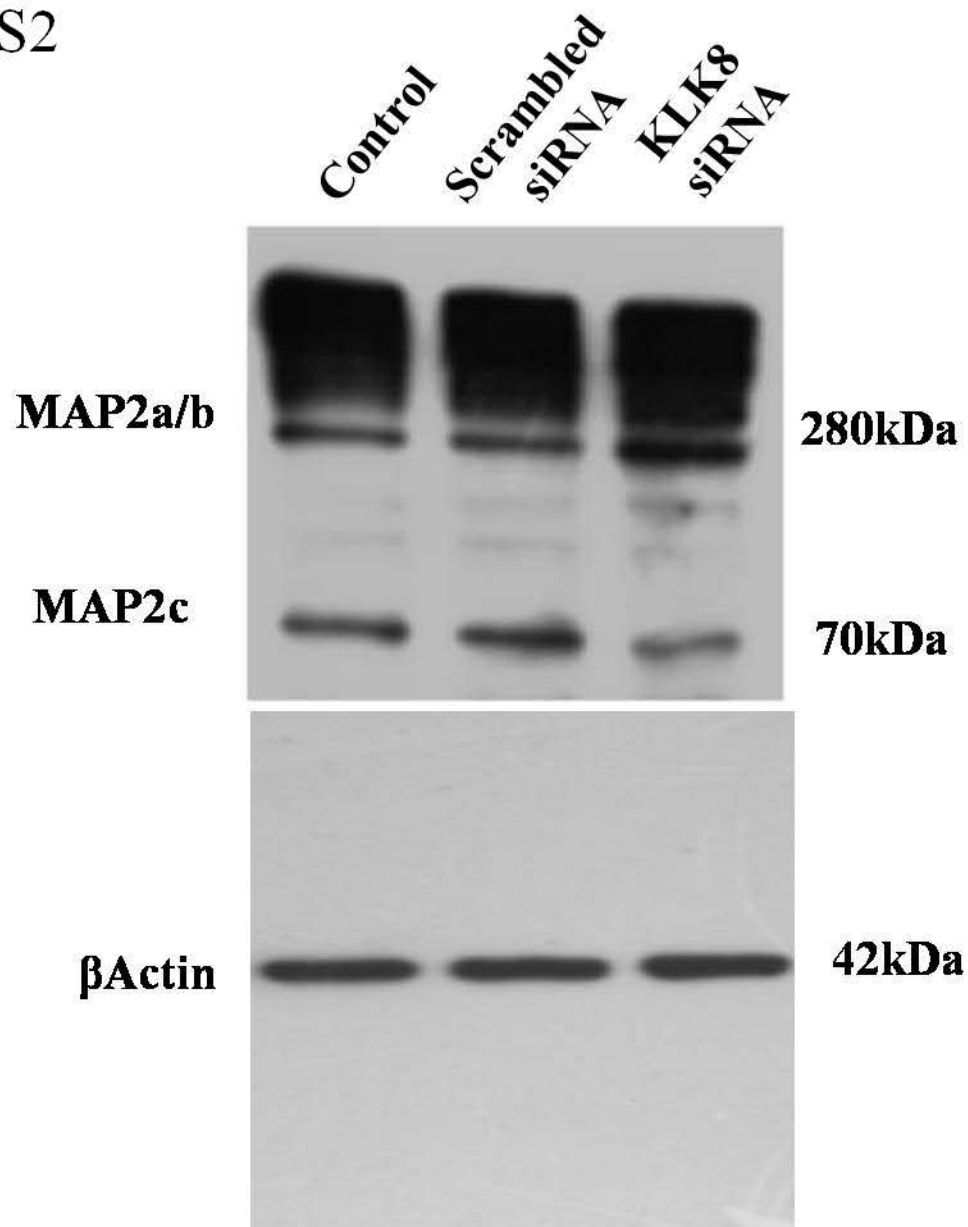
Scrambled siRNA



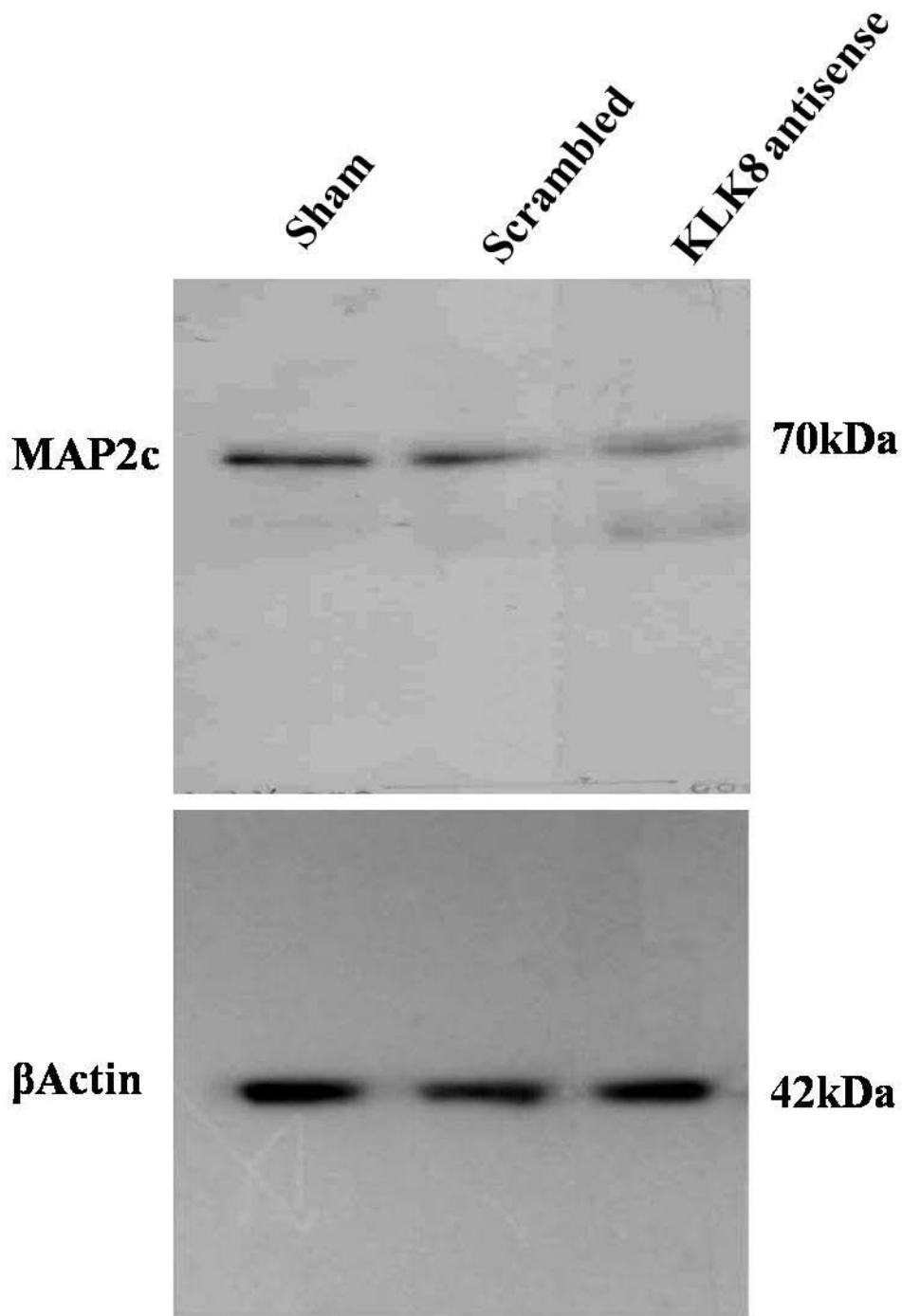
KLK8 siRNA



S2



S3



S4

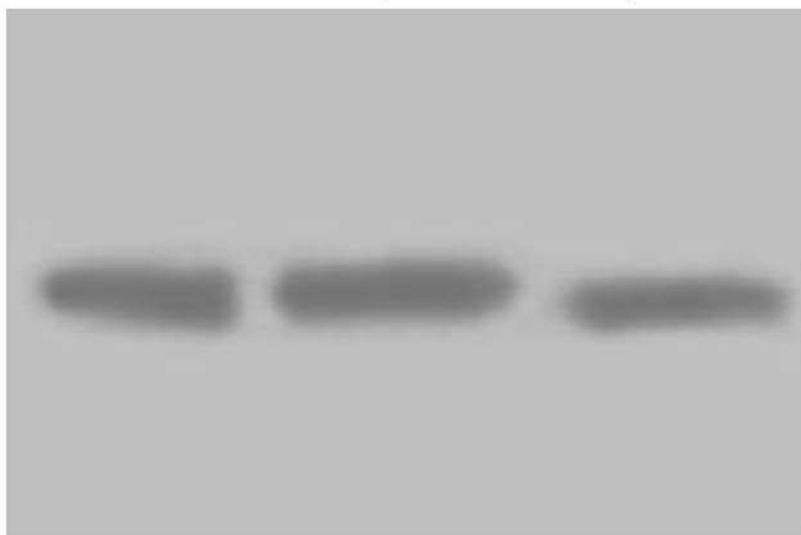
Sham

Scrambled

KLK8 antisense

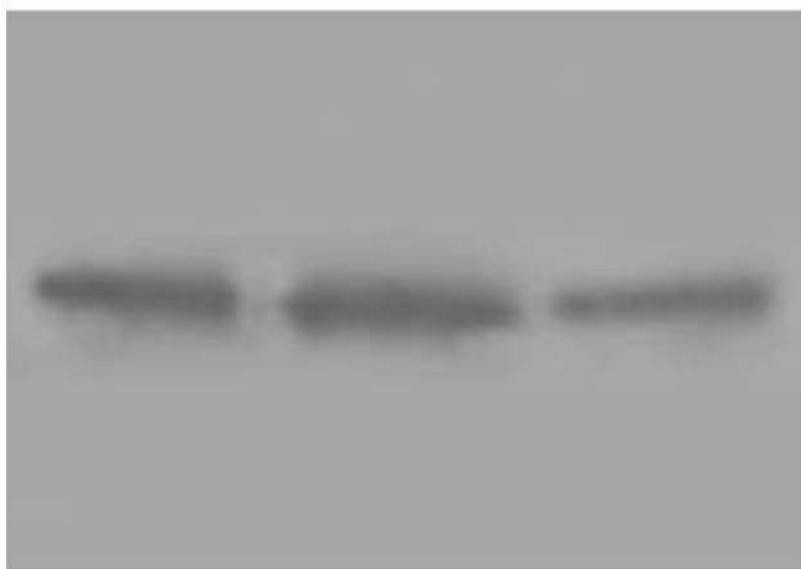
PKA

40kDa



pCREB

43kDa



β actin

42kDa

