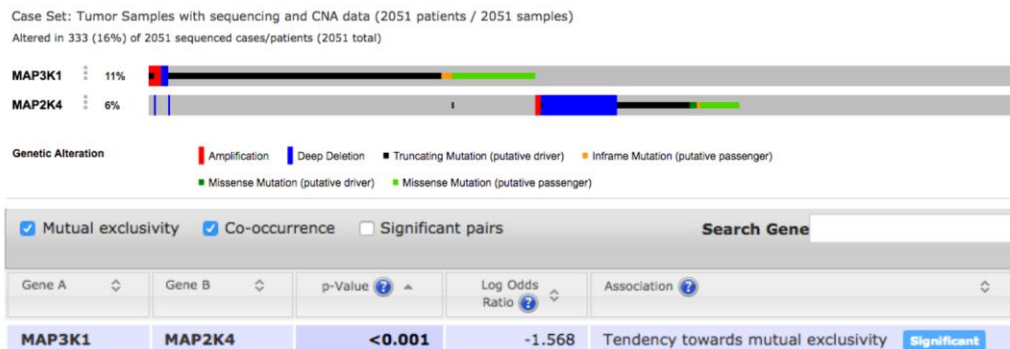
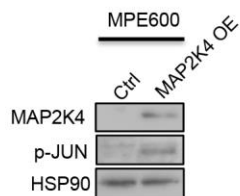


Figure S1

a



b



c

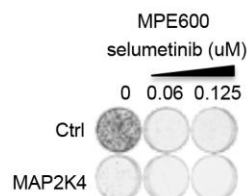


Figure S1. MAP3K1 and MAP2K4 mutation status.

A. MAP3K1 and MAP2K4 mutation status and mutual exclusivity analysis in METABRIC breast cancer study obtained from <http://www.cbioportal.org>.

B. Lysates of control and MAP2K4 overexpression MPE600 cells were western blotted for p-JUN and MAP2K4. HSP90 served as a control.

C. Control and MAP2K4 overexpression MPE600 cells were cultured for two weeks in medium containing the indicated concentration of selumetinib. Then cells were fixed and stained.