

Figure S3

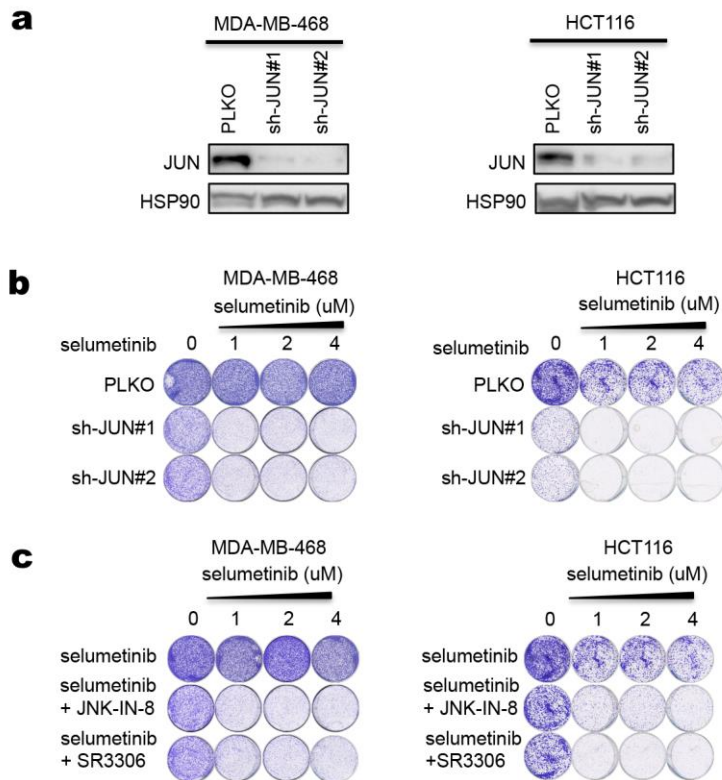


Figure S3. *JUN* knockdown confer sensitivity to selumetinib.

A. Two individual shRNAs targeting JUN were introduced into MDA-MB-468 and HCT116 cells by lentiviral transduction. JUN knockdown was determined by Western blotting. HSP90 served as a control.

B. Control and JUN knockdown MDA-MB-468 and HCT116 cells were cultured for two weeks in medium containing the indicated concentration of selumetinib. Then cells were fixed and stained.

C. MDA-MB-468 cells were pretreated with 0.25 μ M JNK-IN-8 or 0.25 μ M SR3306 and HCT116 cells were pretreated with 0.5 μ M JNK-IN-8 or 0.5 μ M SR3306 for one week. Then cells were seeded and cultured for two weeks in medium containing increasing concentration of selumetinib alone, JNK-IN-8 alone, SR3306 alone, or combination of selumetinib and JNK-IN-8 or SR3306. After this, cells were fixed and stained.