

Figure S4

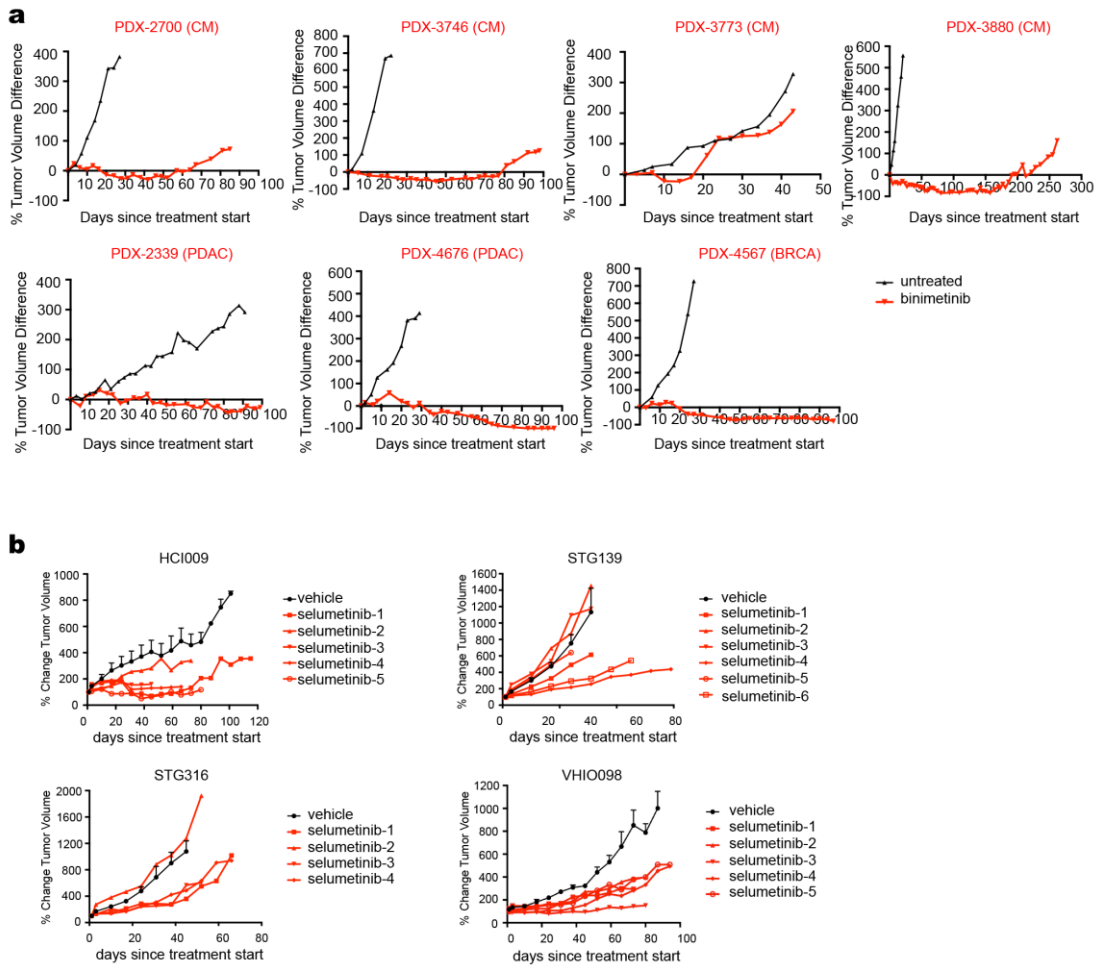


Figure S4. MEK inhibitor responses of PDX mouse models

A. Binimetinib response data of 7 *MAP3K1* or *MAP2K4* mutant PDX tumors were obtained from ref.³⁶. The percentage change from the initial tumor volume of untreated (black) and binimetinib treated (red) is shown.

B. Indicated PDX mouse models were treated with vehicle or selumetinib (20mg/kg/day). For vehicle treated animals, the mean change from the initial tumor volume is shown. Error bars represent standard error of the mean (SEM). For drug treated animals, the percentage change is shown per individual animal.