

Supplementary Data

A new terpene coumarin microbial transformed by *Mucor polymorphosporus* induces apoptosis of human gastric cancer cell line MGC-803

Guangzhi Li^{1, 2}•Junchi Wang¹•Xiaojin Li³•Jianguo Xu³•Zhao Zhang¹
*•Jianyong Si¹ *

1. Key Laboratory of Bioactive Substances and Resources Utilization of Chinese Herbal Medicine, Ministry of Education, Institute of Medicinal Plant Development, Chinese Academy of Medical Sciences, Peking Union Medical College, Beijing 100193, China;

2. Shenzhen Luohu People's Hospital, The Third Affiliated Hospital of Shenzhen University, Shenzhen 518035, PR China;

3. Xinjiang Institute of Chinese Materia Medica and Ethical Materia Medica, Urumqi 830002, China

* Corresponding authors. Tel. /Fax: +86-010-57833299.

E-mail: zzhang@implad.ac.cn; jysi@implad.ac.cn;

MS and NMR Spectra of Compounds

Figure 1. HR-ESI-MS spectrum of 2

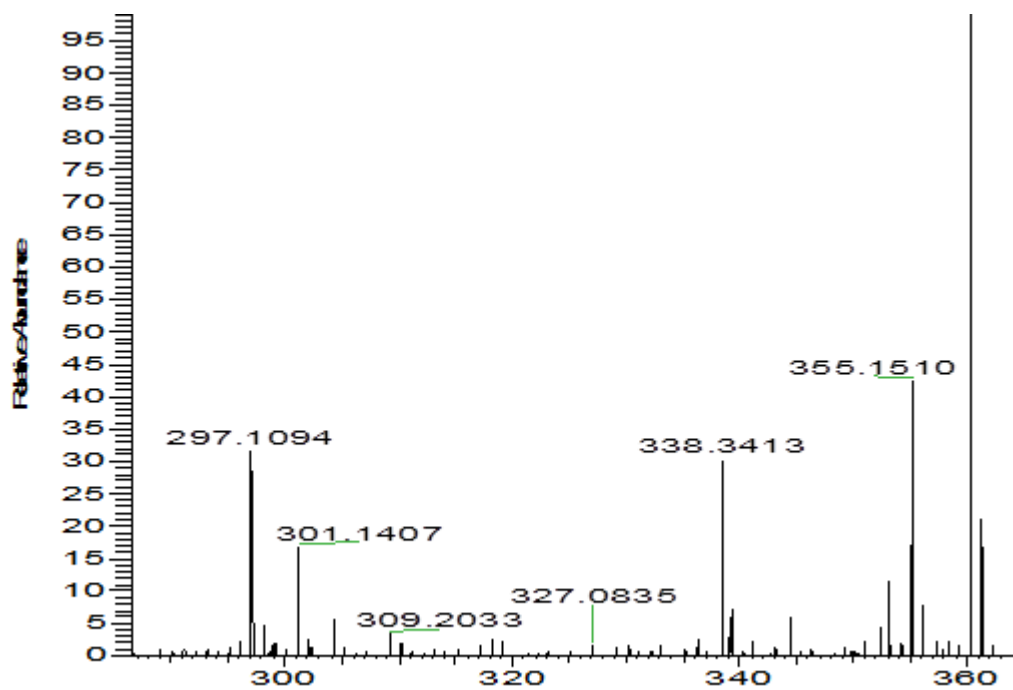


Figure 2. ^1H NMR spectrum of 2

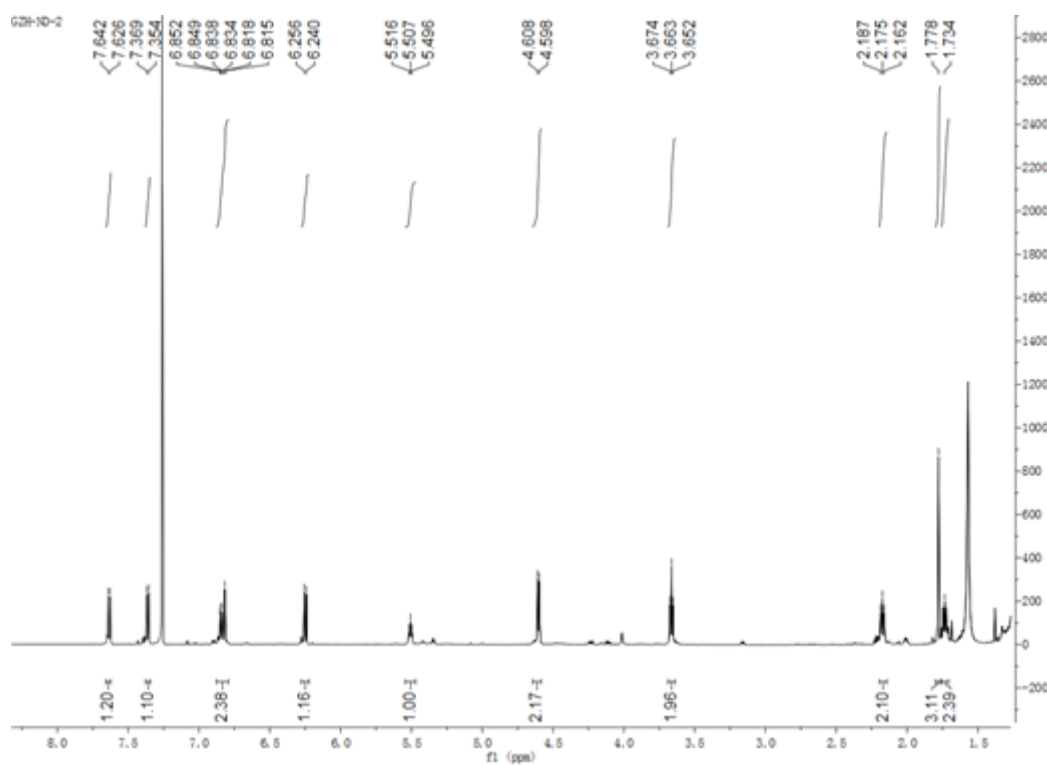


Figure 3. ^{13}C NMR spectrum of 2

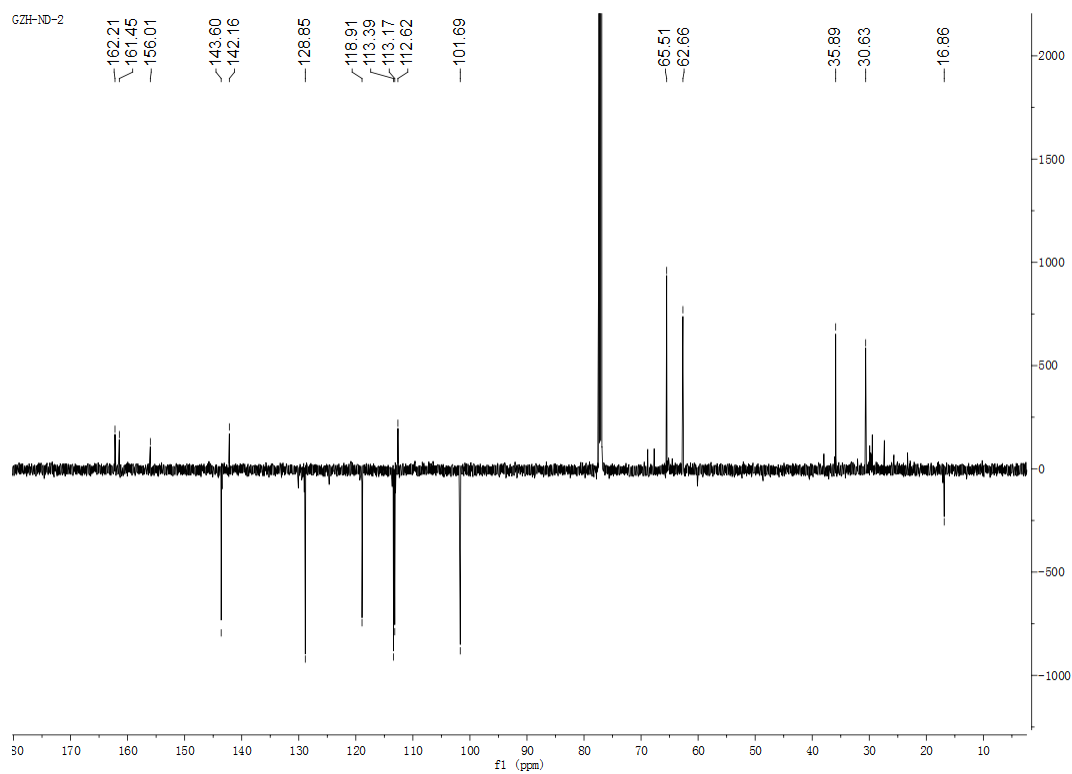


Figure 4. HMBC spectrum of 2

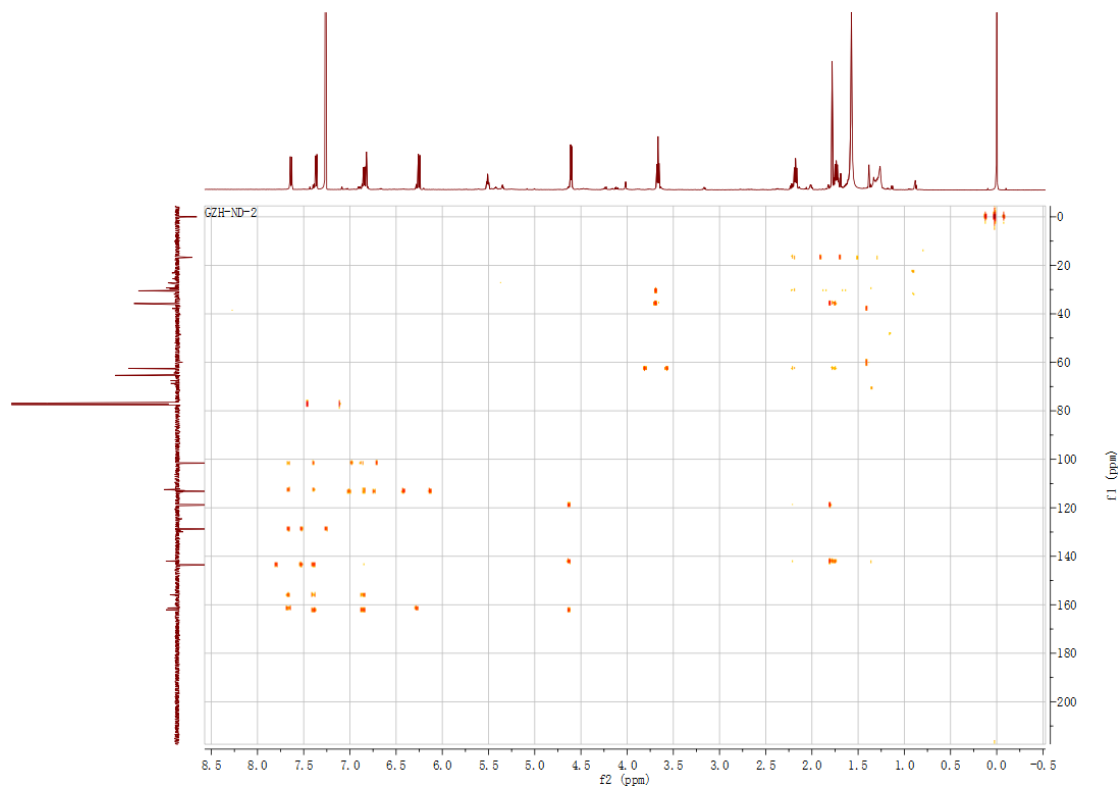


Figure 5. HR-ESI-MS spectrum of 3

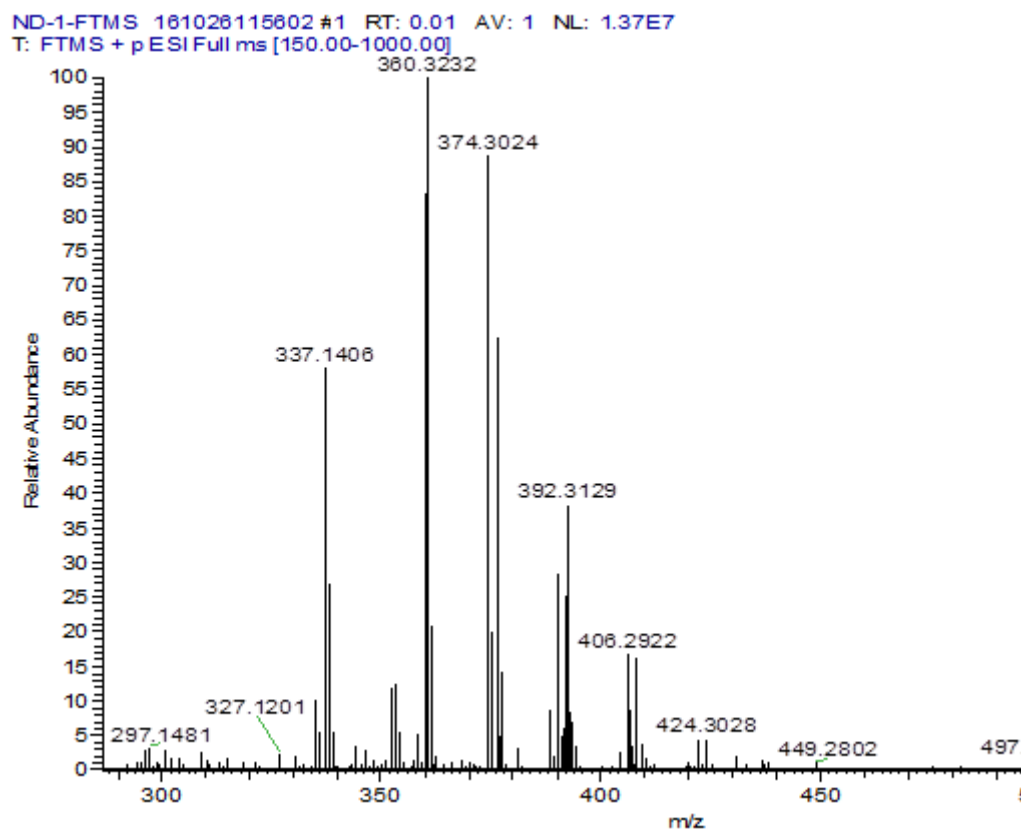


Figure 6. ^1H NMR spectrum of 3

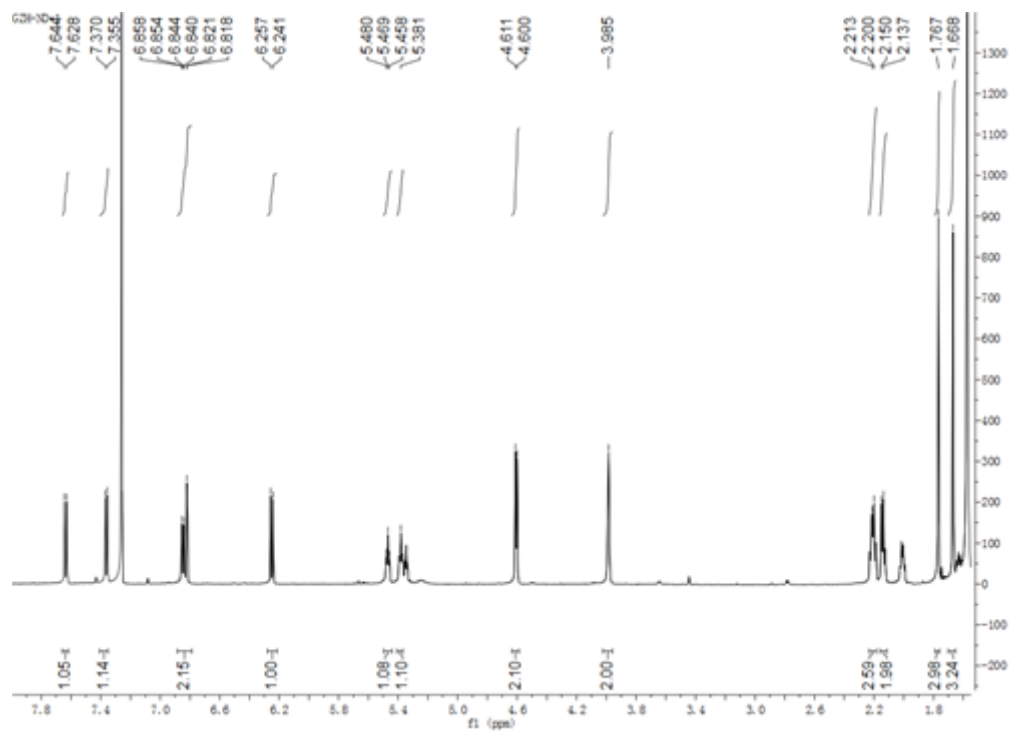


Figure 7. ^{13}C NMR spectrum of 3

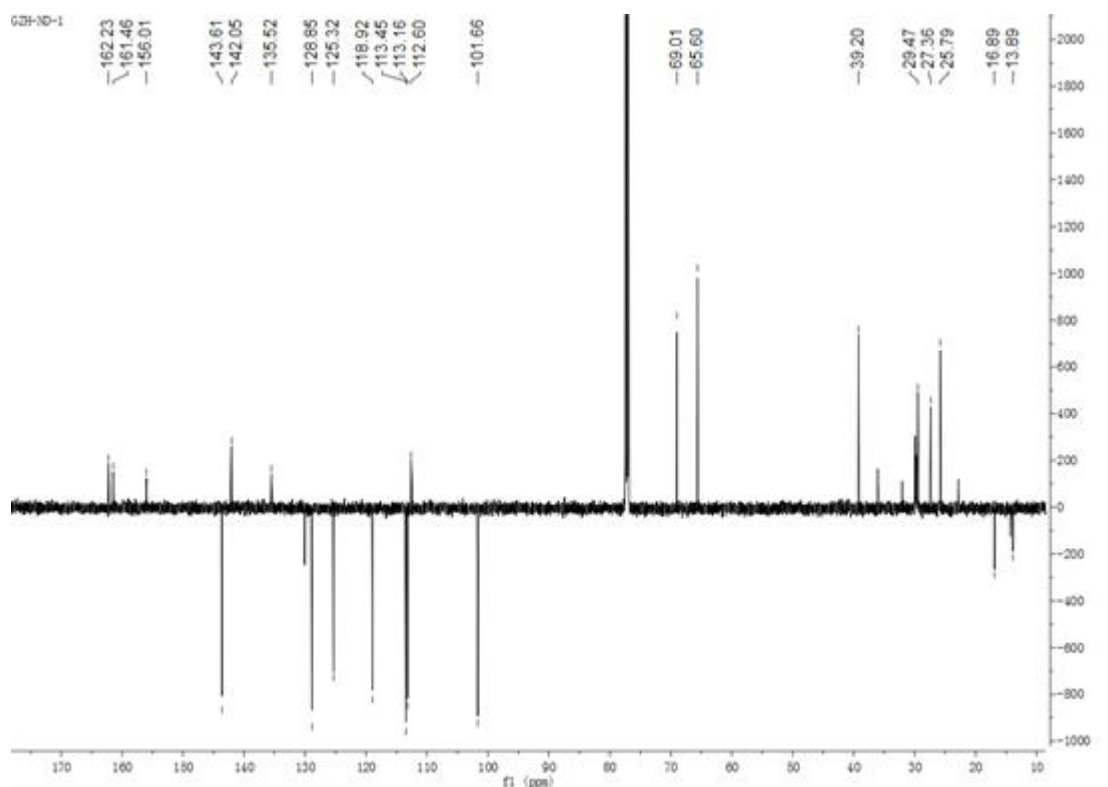


Figure 8. HMBC spectrum of 3

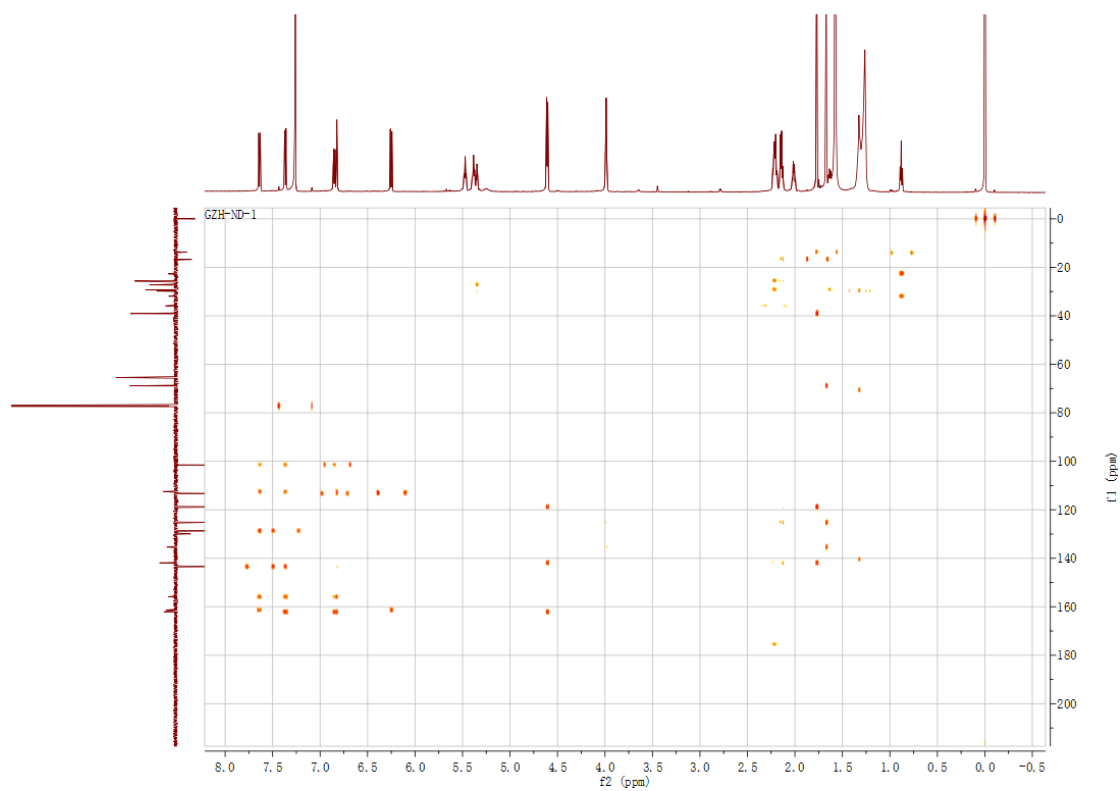


Figure 9. NOESY spectrum of 3

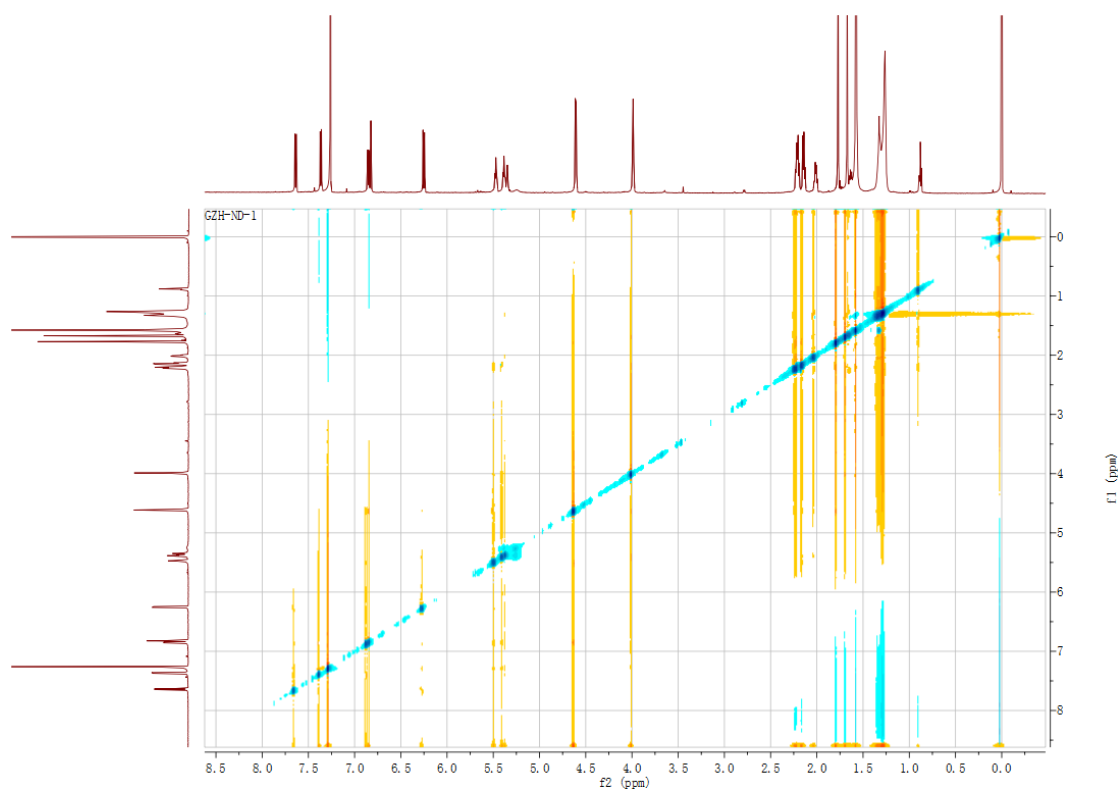


Figure 10. HR-ESI-MS spectrum of 4

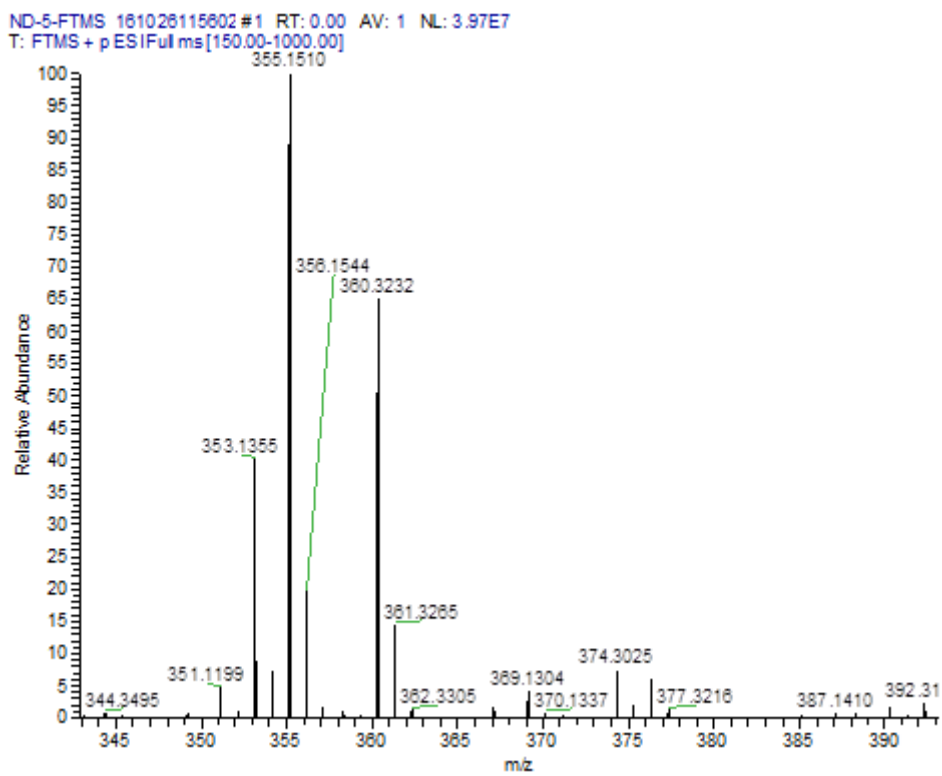


Figure 11. ^1H NMR spectrum of 4

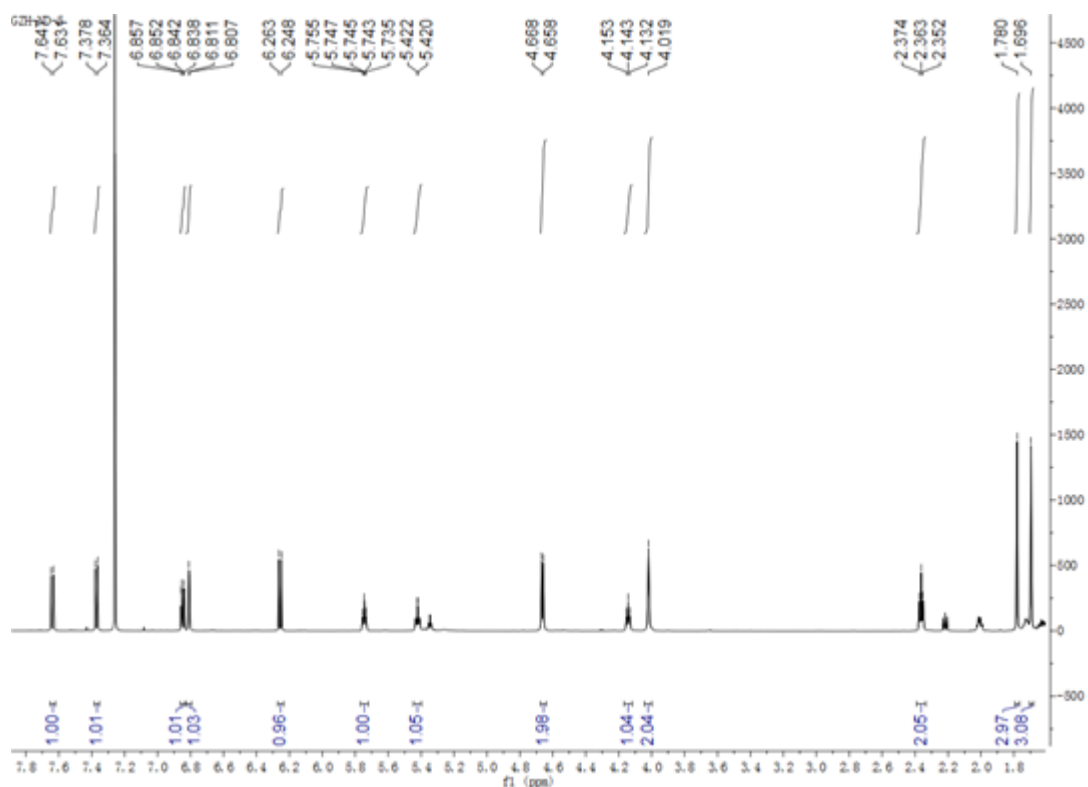


Figure 12. ^{13}C NMR spectrum of 4

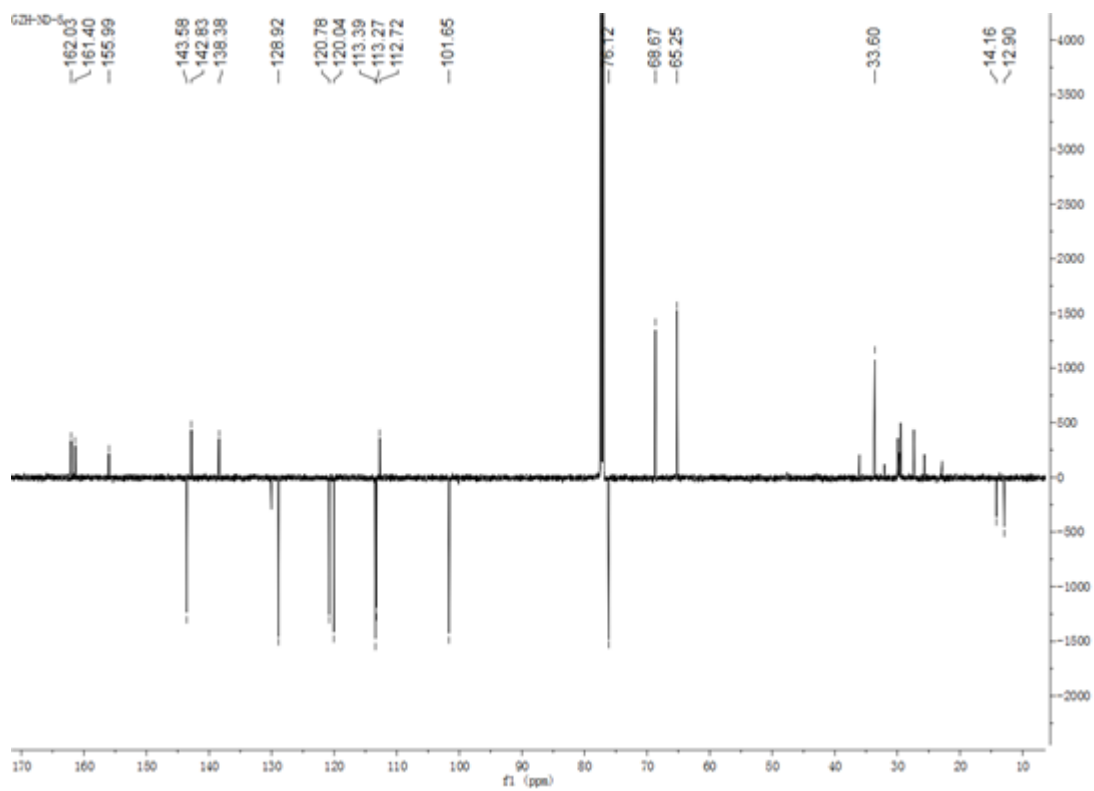


Figure 13. HMBC spectrum of 4

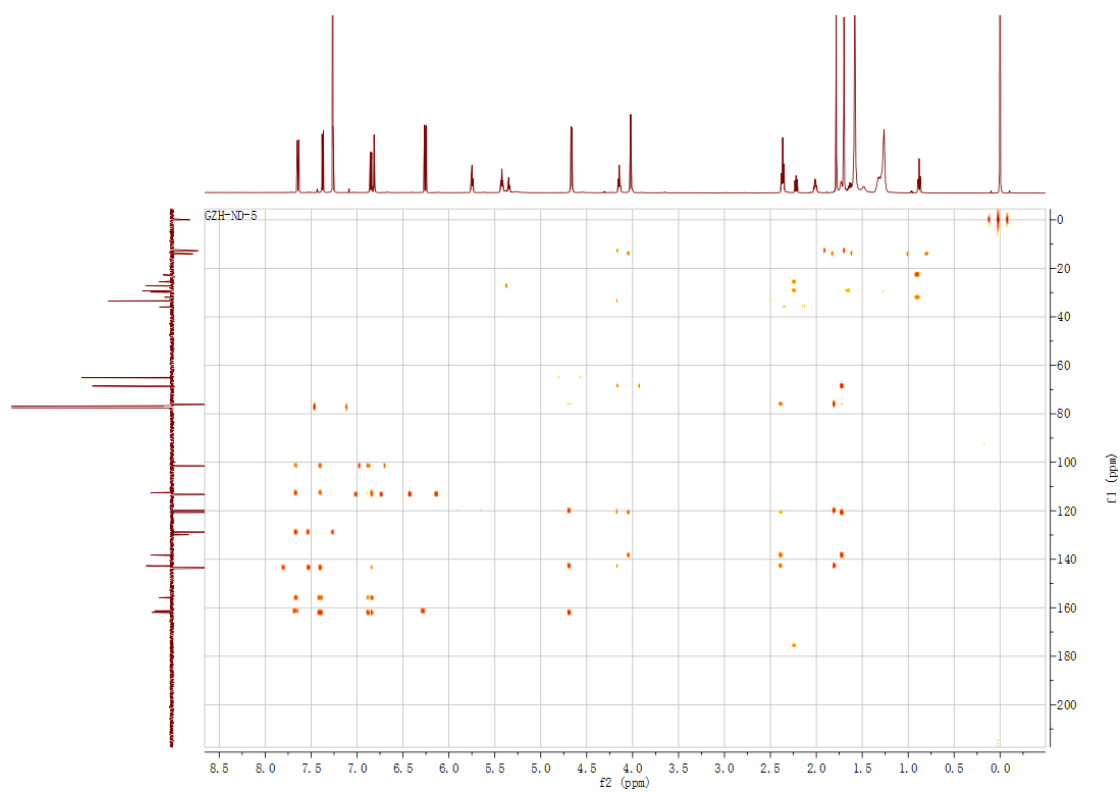


Figure 14. NOESY spectrum of 4

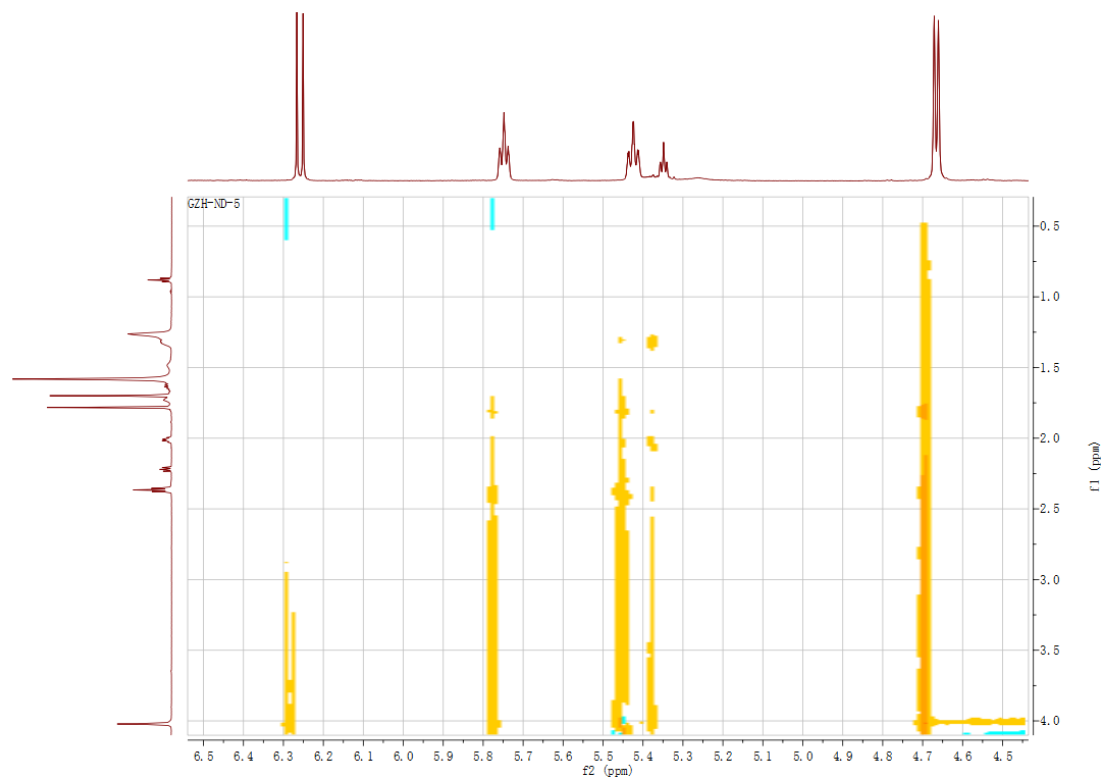


Figure 15. HR-ESI-MS spectrum of 5

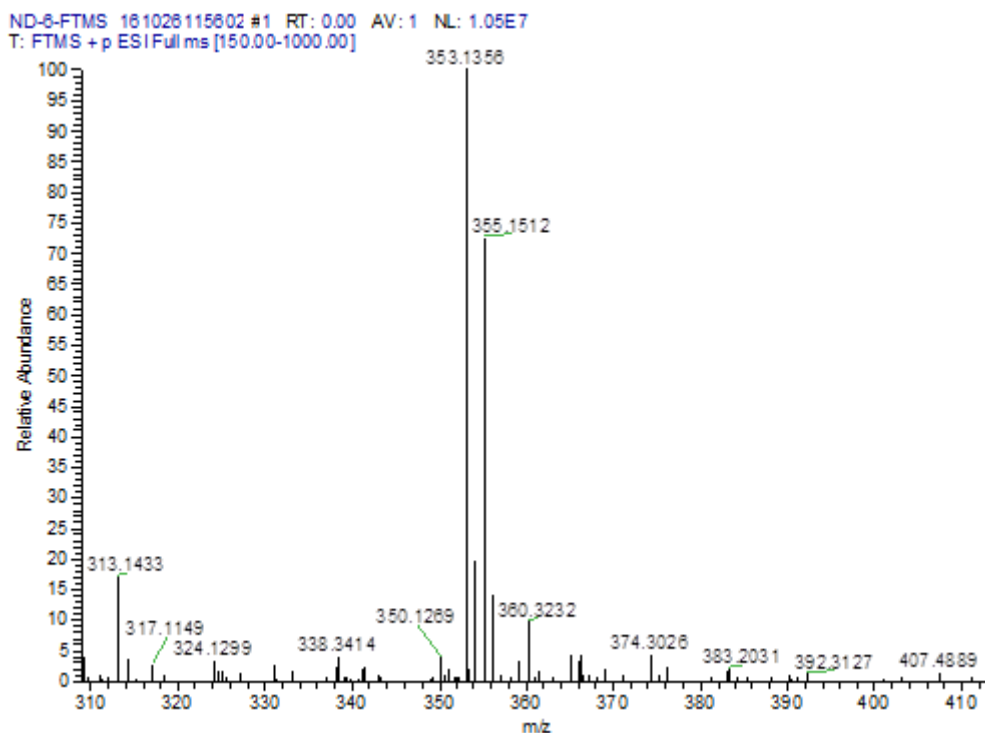


Figure 16. ^1H NMR spectrum of 5

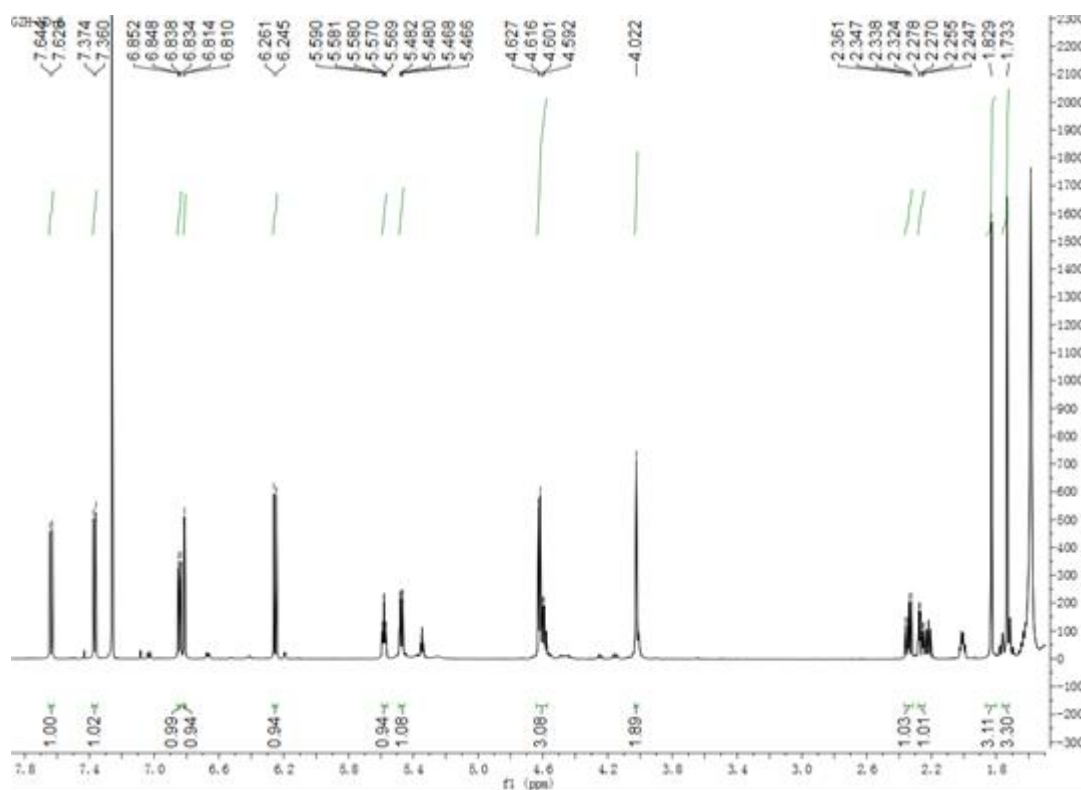


Figure 17. ^{13}C NMR spectrum of 5

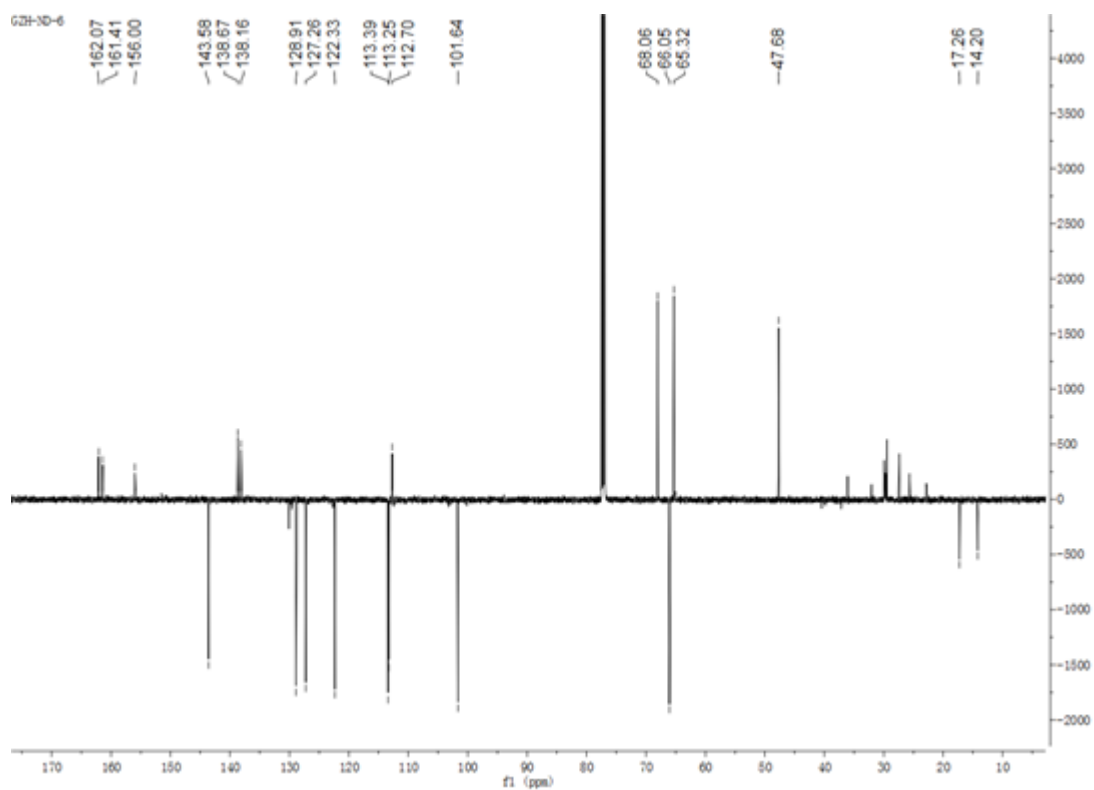


Figure 18. NOESY spectrum of 5

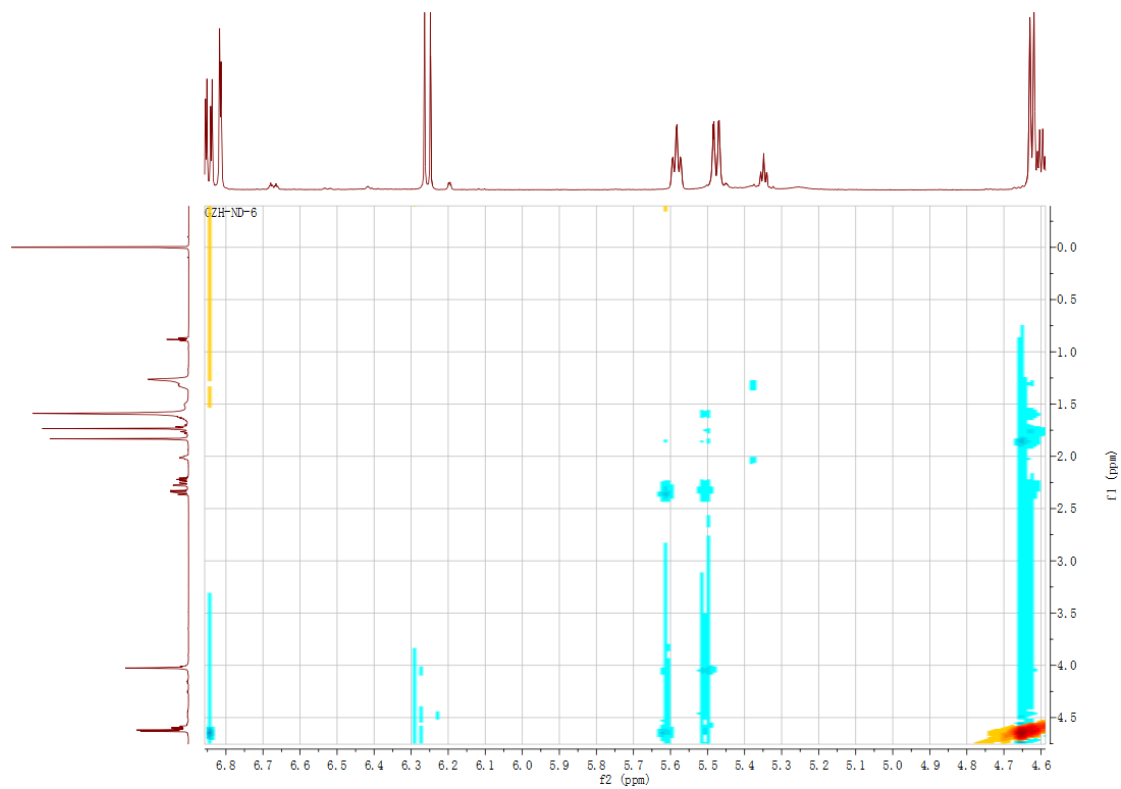


Figure 19. HMBC spectrum of 5

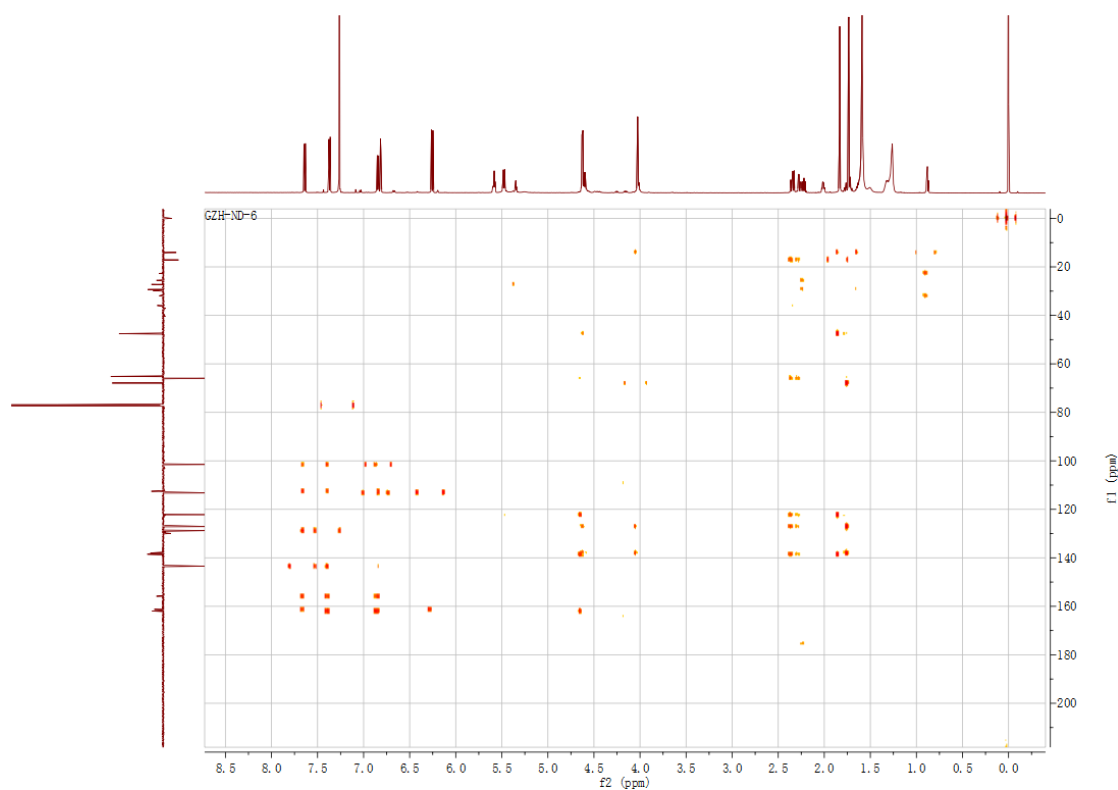


Table . Cytotoxicity of compounds 1-5

Compound	IC ₅₀ (μM)		TI
	MGC-803	GES-1	
1	10.38 ± 0.86 ^a	56.96 ± 2.31	5.5
2	0.78 ± 0.13	46.04 ± 3.11	59.0
3	4.75 ± 1.02	25.56 ± 2.12	5.4
4	6.78 ± 2.06	33.82 ± 1.46	3.8
5	10.78 ± 1.83	35.5 ± 2.21	3.3

IC₅₀ represent the concentration of compound causing 50% growth inhibition of cells; a Values represent mean ± SD of triplicate experiments; TI values represent IC₅₀ (GES-1)/ IC₅₀ (MGC-803)