

Marker

Lactobacillus delbruekii

Lactobacillus curvatus

Lactobacillus brevis

Lactobacillus acidophilus

Lactobacillus crispatus

Lactobacillus helveticus

Lactobacillus ruminis

Lactobacillus vaginalis

Lactobacillus ingluviei

Lactobacillus plantarum

Lactobacillus pontis

Lactobacillus amylovorus

Lactobacillus fermentum

Lactobacillus rhamnosus

Lactobacillus salivarius

Lactobacillus buchneri

Lactobacillus alimentarius

Lactobacillus collinoideus

Lactobacillus fructivorans

Marker

Lactobacillus perolens

Lactobacillus rossiae

Lactobacillus manihotivorans

Lactobacillus coryneformis

Lactobacillus apinorum

Lactobacillus algidus

Lactobacillus composti

Lactobacillus mellifer

Lactobacillus dextrinicus

Lactobacillus floricola

Lactobacillus selangorensis

Lactobacillus amylophilus

Marker

Bifidobacterium bifidum

Bacteroides thetaiotaomicron

Collinsella intestinalis

Prevotella copri

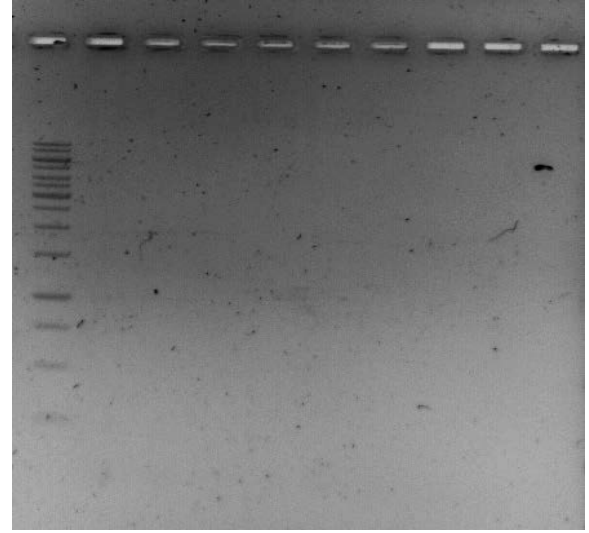
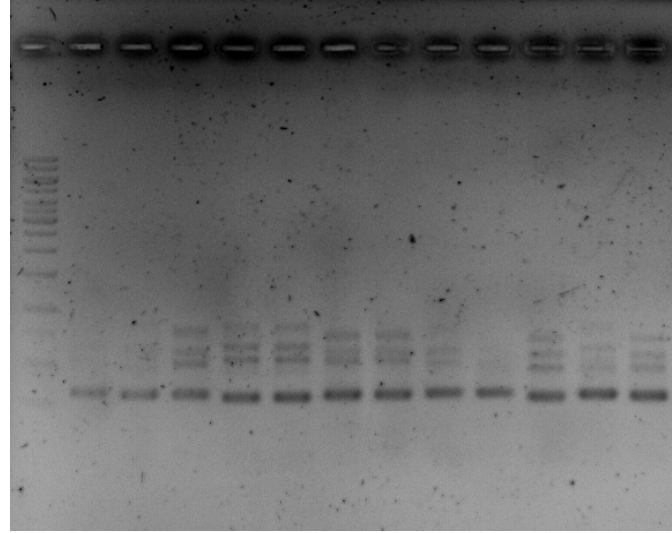
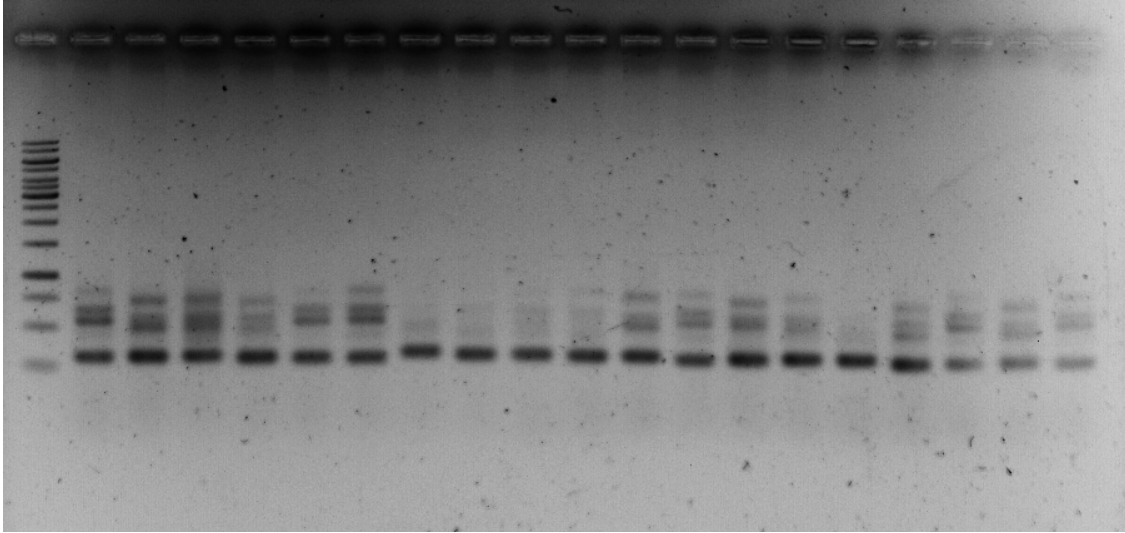
Escherichia coli

Blautia coccoides

Faecalibacterium prausnitzii

Methanobrevibacter smithii

Klebsiella pneumoniae



Supplementary Figure 1: *In vitro* validation of the primer pair Probio-lac_Uni/Probio-lac_Rev. The primer pair Probio-lac_Uni/Probio-lac_Rev was used for PCR amplification of DNA extracted from 31 lactobacilli species covering the 23 phylogenetic groups of the *Lactobacillus* genus and from 9 non-lactobacilli taxa.