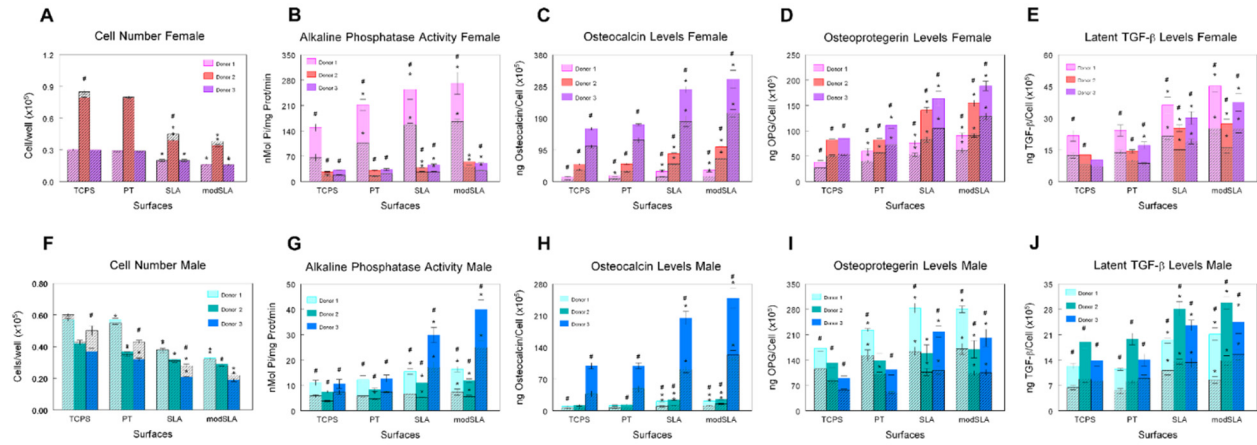


Figure S3



Donor specific response for male and female cells cultured on microstructured Ti surfaces and treated with  $1\alpha,25(\text{OH})_2\text{D}_3$  for 24 hours at confluence on TCPS. Cell number was assessed to measure proliferation (A, F). Alkaline phosphatase specific activity in cell lysates was assessed (B, G). Production of osteocalcin (C, H), osteoprotegerin (D, I), and latent TGF- $\beta$ 1 (E, J) after 24 hours fresh media incubation. \* $p < 0.05$ , vs. TCPS; # $p < 0.05$ , vs. untreated control group per surface.