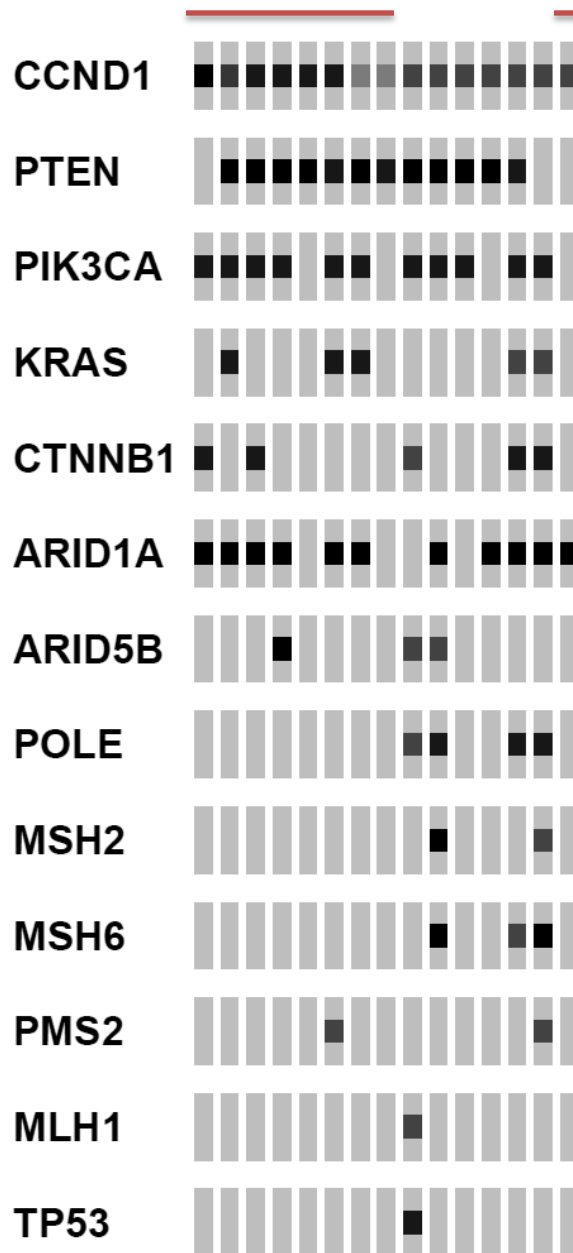


Supplementary Figure 2

A



Supplemental Figure 2. Diagram of co-occurring mutations of genes frequently implicated in endometrial cancer in the TCGA cohort of endometrial carcinoma cases exhibiting *CCND1* mutations. Square denotes presence of gene mutation. Red bar denotes presence of C-terminal *CCND1* mutation.