

**ENTERIC SPECIES F HUMAN ADENOVIRUSES USE LAMININ-BINDING
INTEGRINS AS CO-RECEPTORS FOR INFECTION OF HT-29 CELLS**

Anandi Rajan^a, B. David Persson^{a+}, Lars Frångsmyr^{a+}, Annelie Olofsson^b, Linda Sandblad^b, Jyrki Heino^c, Yoshikazu Takada^d, A. Paul Mould^e, Lynn M Schnapp^f, Jason Gall^g, Niklas Arnberg^{a*}

^aDepartment of Clinical Microbiology/ Division of Virology and the Laboratory for Molecular Infection Medicine Sweden, Umeå University, Sweden;

^bDepartment of Molecular Biology, Umeå University, Sweden;

^cDepartment of Biochemistry, University of Turku, Finland;

^dDepartment of Dermatology, Biochemistry and Molecular Medicine, UC Davis School of Medicine, California, USA;

^eBiomolecular Analysis Core Facility, Faculty of Biology, Medicine and Health, University of Manchester, United Kingdom;

^fDivision of Pulmonary, Critical Care, Allergy and Sleep Medicine, Medical University of South Carolina, Charleston, USA;

^gVaccine Research Center (VRC), NIAID, NIH, Bethesda, USA

Running Head: Enteric HAdVs and laminin-binding integrins

*Address correspondence to Niklas Arnberg, niklas.arnberg@umu.se

+ These authors contributed equally to this work.

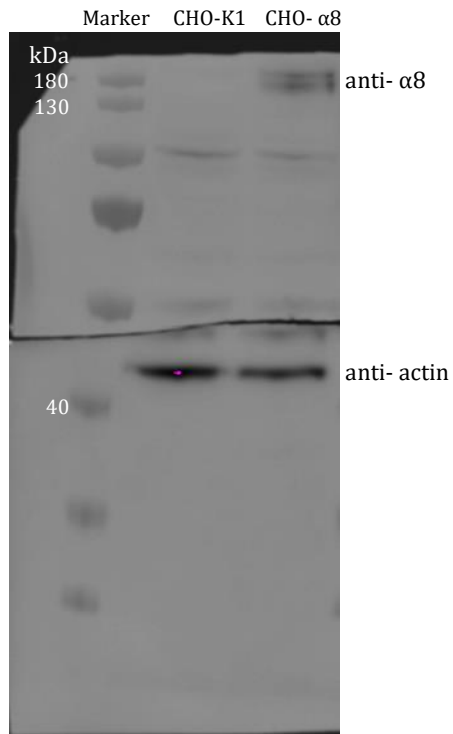


Figure S1: **Expression of human $\alpha 8$ integrin.** Full length blot of analysis of $\alpha 8$ integrin in transfected CHO cells and control CHO-K1 cells.

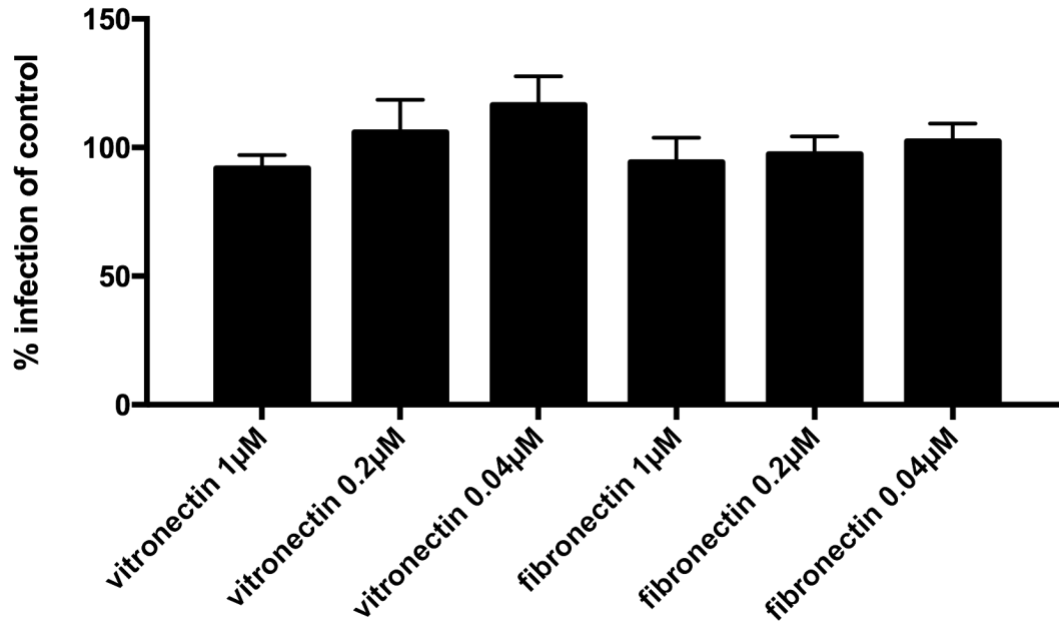


Figure S2: **HAdV-41 infection of HT-29 cells in presence of soluble vitronectin and fibronectin.** HAdV-41 infection of HT-29 cells in the presence of different concentrations of vitronectin and fibronectin. The data is represented as % infection of untreated cells. Experiments were performed twice with duplicate samples in each experiment. Error bars represent mean \pm SEM.