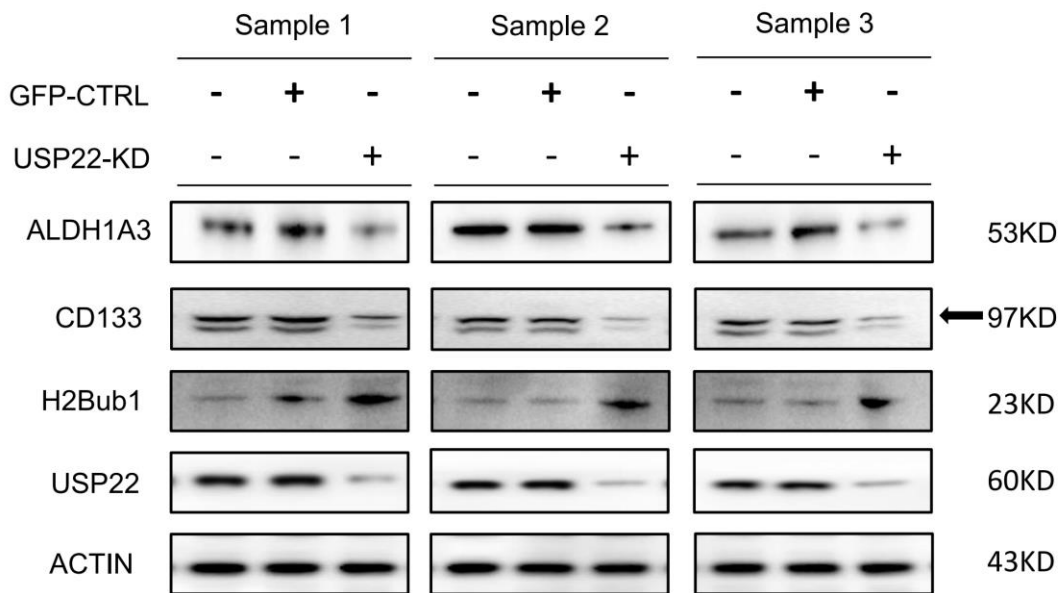


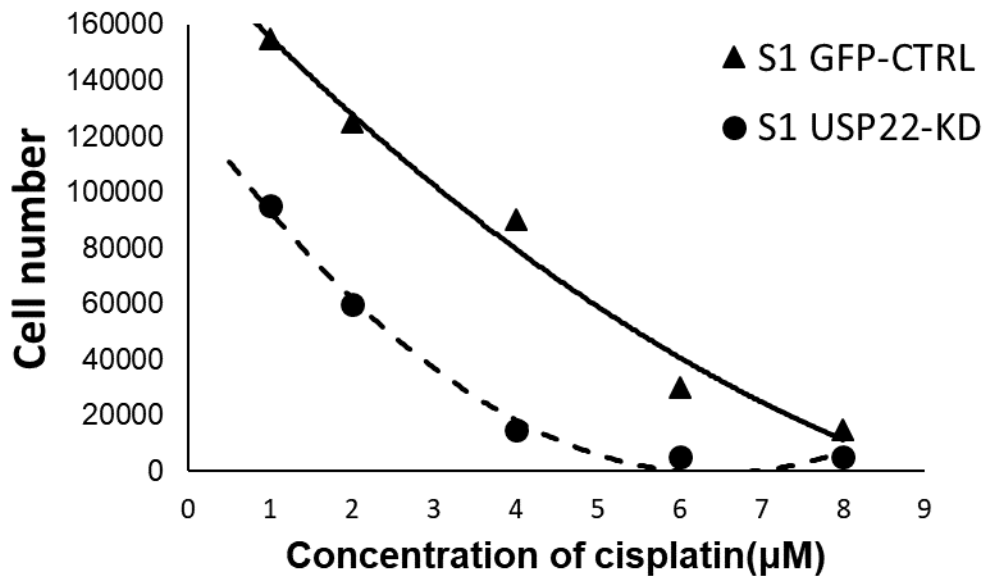
Figure S2

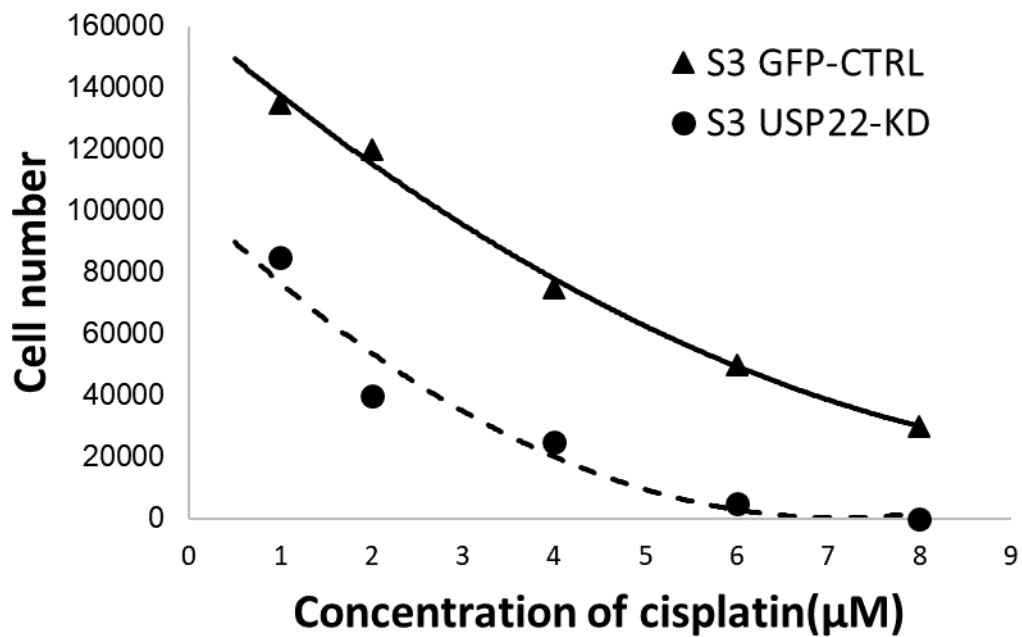
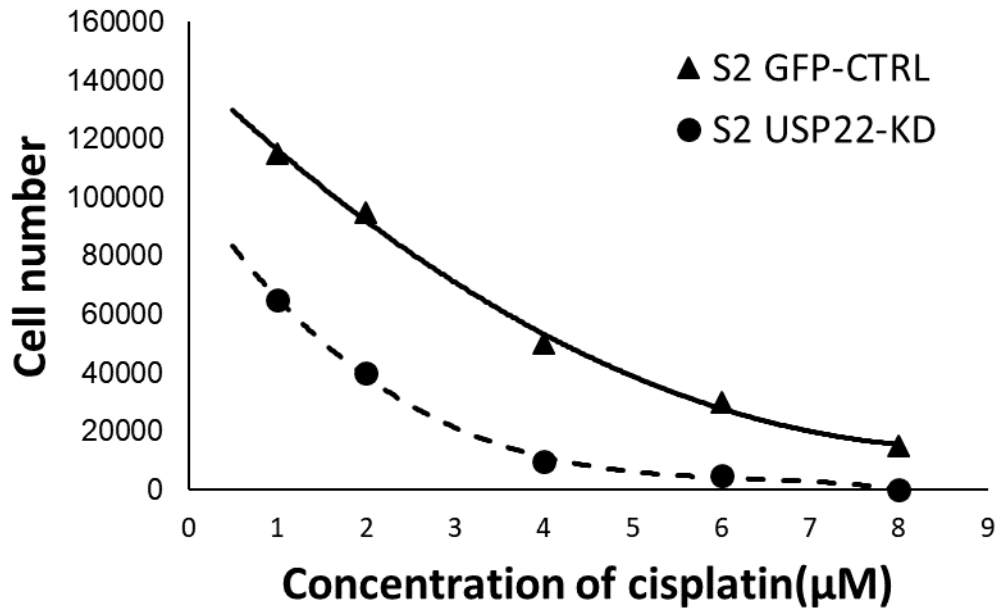
A



A: With another USP22-shRNA, we can see the results were the same as the Figure 2B left panel. Compared to GFP-CTRL CICs, USP22 protein was markedly decreased in USP22-KD cells, and concurrently, CD133 and ALDH1A3 were highly downregulated and H2Bub1 was moderately increased in all three cells.

B





B: With another USP22-shRNA, we can see the results were the same as the Figure 3B. The results showed that IC₅₀ of cisplatin for all three USP22-KD cancer cells were significantly decreased compared with GFP-CTRL control cancer cells (2.4 μM vs 5.5 μM for sample 1, $P = 0.0054$; 1.5 μM vs 4.4 μM for sample 2, $P = 0.0039$; 1.9 μM vs 6.0 μM for sample 3, $P = 0.0020$).